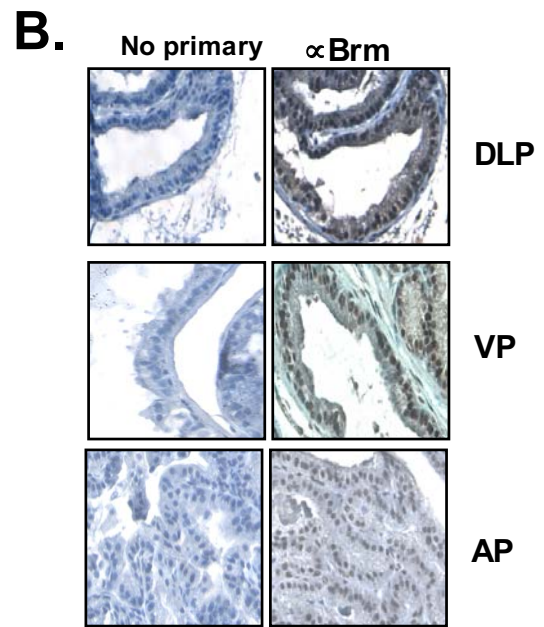
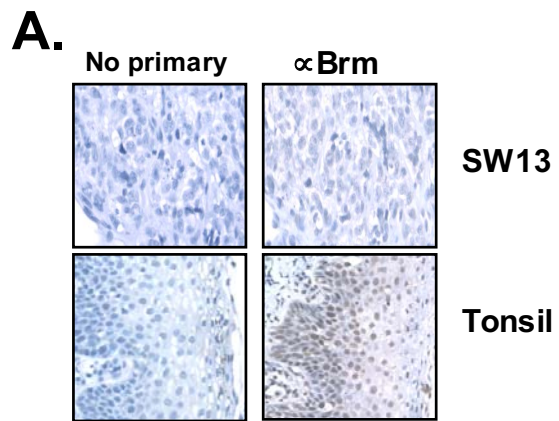
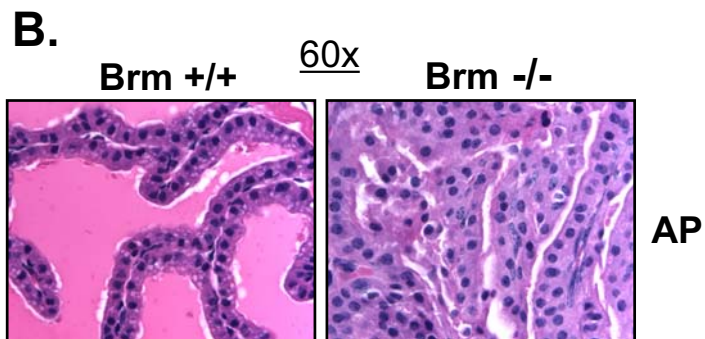
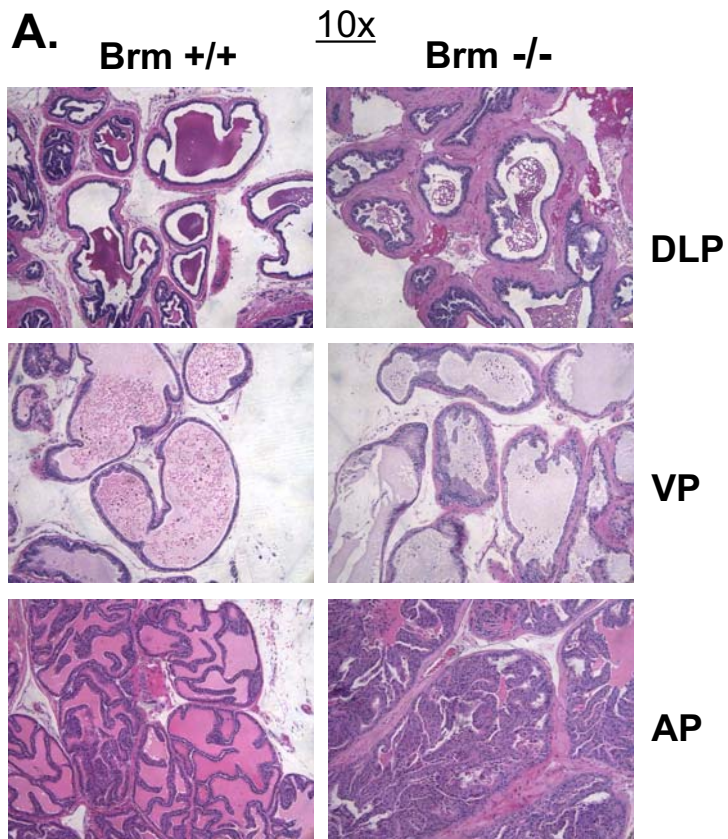


**Supplementary
Figure 1**

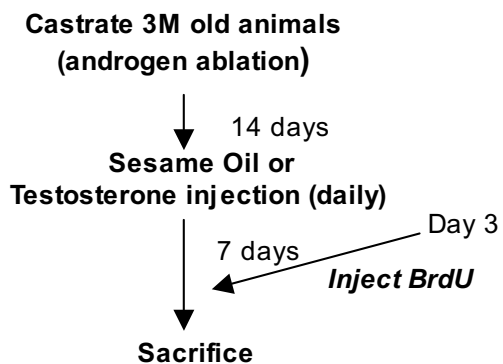


**Supplementary
Figure 2**

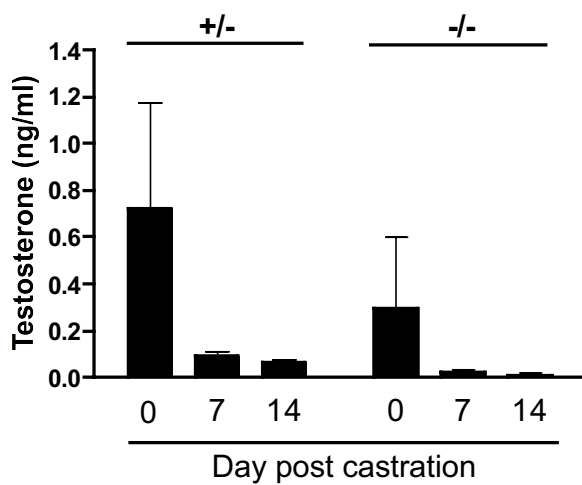


**Supplementary
Figure 3**

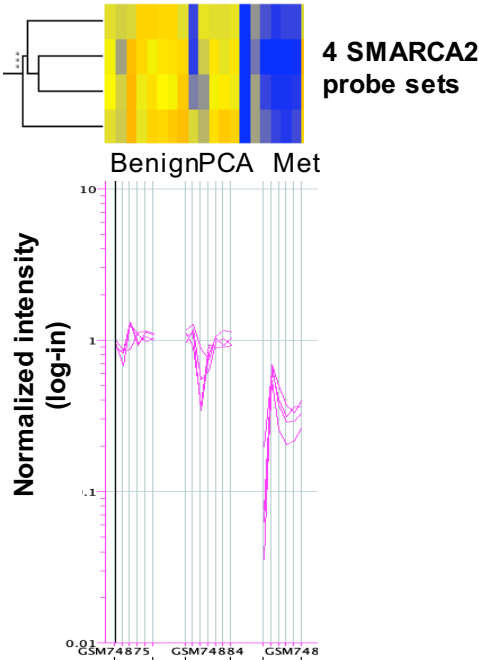
A.



B.

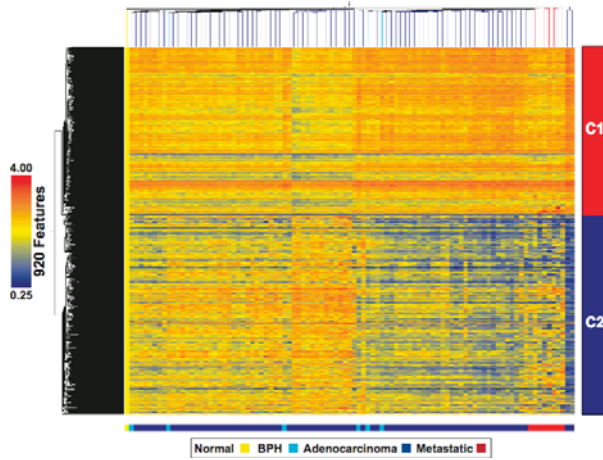


**Supplementary
Figure 4**



Supplementary Figure 5

A.



B.

CORRELATED

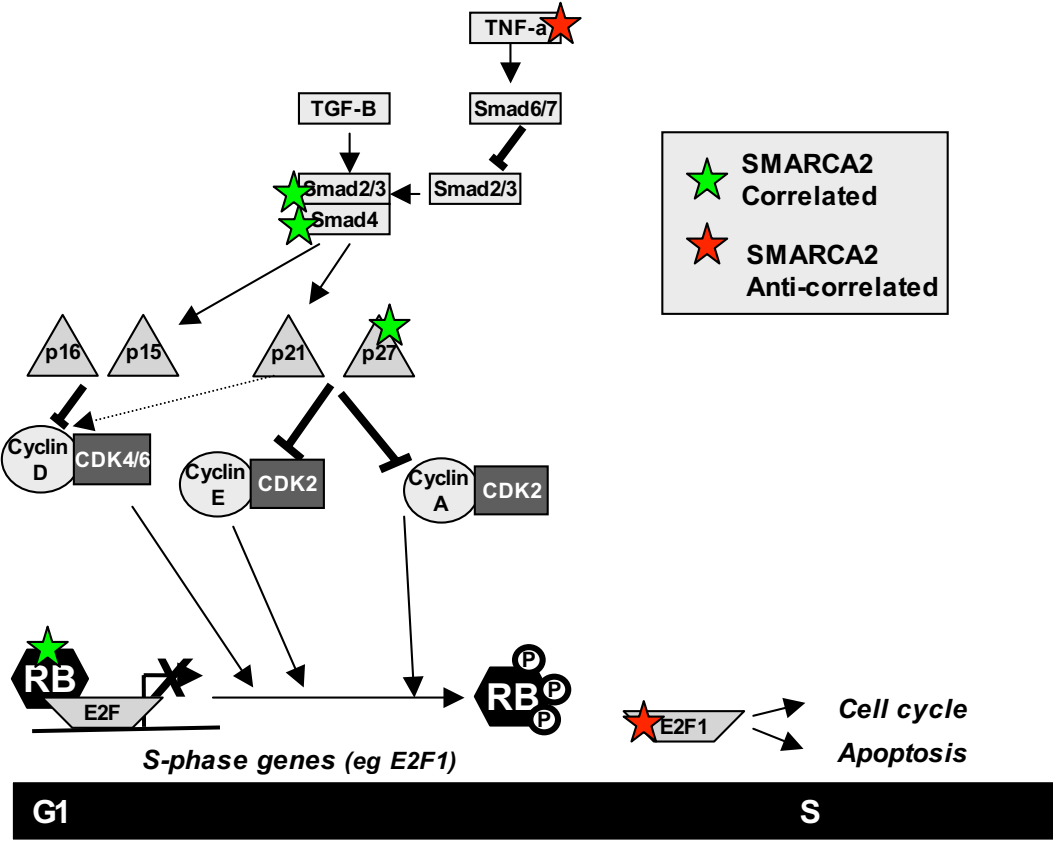
Cell Cycle (p-value = 1.68E-03)		
BUB3	BUB3 budding uninhibited by benzimidazoles 3 homolog (yeast)	201456_s_at
CDC23	CDC23 (cell division cycle 23, yeast, homolog)	202892_at
CDKN1B	Cyclin-dependent kinase inhibitor 1B (p27, Kip1)	209112_at
ORC4L	Origin recognition complex, subunit 4-like (yeast)	203351_s_at
RB1	Retinoblastoma 1 (including osteosarcoma)	203132_at
SKP1A	S-phase kinase-associated protein 1A (p19A)	200711_s_at 200718_s_at
SMAD2	SMAD, mothers against DPP homolog 2 (Drosophila)	203075_at 203077_s_at
SMAD4	SMAD, mothers against DPP homolog 4 (Drosophila)	202527_s_at
SMC1L1	SMC1 structural maintenance of chromosomes 1 like 1 (yeast)	201589_at
Citrate Cycle (p-value = 1.63E-02)		
SDHD	Succinate dehydrogenase complex, subunit D, integral membrane protein	202026_at
SUCLA2	Succinate-CoA ligase, ADP-forming, beta subunit	202930_s_at
SUCLG1	Succinate-CoA ligase, GDP-forming, alpha subunit	217874_at
SUCLG2	Succinate-CoA ligase, GDP-forming, beta subunit	212459_x_at 215772_x_at
Folate Biosynthesis (p-value = 3.50E-02)		
ALS4	Amyotrophic lateral sclerosis 4	201964_at
ERCC3	Excision repair cross-complementing rodent	202176_at
SMARCA2	SWI/SNF related, matrix associated, actin dependent regulator of chromatin, subfamily a, member 2	206542_s_at
		212257_s_at
		206544_x_at 217707_x_at
SMARCA5	SWI/SNF related, matrix associated, actin dependent regulator of chromatin, subfamily a,	202303_x_at 213859_x_at
Secretory Pathway (p-value = 1.04E-04)		
ARFGEF2	ADP-ribosylation factor guanine nucleotide-excha	218098_at
DEK	DEK oncogene (DNA binding)	200934_at
EXOC1	SEC3-like 1 (S. cerevisiae)	222127_s_at
RAB14	RAB14, member RAS oncogene family	200927_s_at
RAB1A	RAB1A, member RAS oncogene family	207791_s_at
RAB2	RAB2, member RAS oncogene family	208731_at
RAB6C	RAB6C, member RAS oncogene family	210406_s_at
SCFD1	Sec1 family domain containing 1	215548_s_at
SEC24B	SEC24 related gene family, member B (S. cerevis)	202798_at
SRP14	Signal recognition particle 14kDa (homologous A	200007_at
STX7	Syntaxin 7	212631_at 212632_at
STXBP3	Syntaxin binding protein 3	203310_at
TLOC1	Translocation protein 1	208943_s_at
TMED10	Transmembrane trafficking protein	212352_s_at
TRAPPC4	Trafficking protein particle complex 4	217959_s_at
VPS45A	Vacuolar protein sorting 45A (yeast)	209268_at
Steroid Hormone Receptor Signaling Pathway (p-value = 5.86E-03)		
CRSP2	Cofactor required for Sp1 transcriptional activation, subunit 2, 150kDa	202610_s_at 202611_s_at
MED4	Mediator of RNA polymerase II transcription,	217843_s_at
NCOA1	Nuclear receptor coactivator 1	209105_at 209106_at
NCOA6	Nuclear receptor coactivator 6	208979_at
RB1	Retinoblastoma 1 (including osteosarcoma)	203132_at
RNF14	Ring finger protein 14	201823_s_at 201824_at
Ubiquitin Mediated Proteolysis (p-value = 1.32E-02)		
CDC23	CDC23 (cell division cycle 23, yeast, homolog)	202892_at
CUL2	Cullin 2	203079_s_at
FBXW11	F-box and WD-40 domain protein 11	209455_at
HERC2	D15F37 gene	217902_s_at
SKP1A	S-phase kinase-associated protein 1A (p19A)	200711_s_at 200718_s_at

ANTI-CORRELATED

Antigen Processing and Presentation (p-value = 2.50E-02)		
HLA-DOA	Major histocompatibility complex, class II, DO alpha	211142_x_at
IFNA4	Interferon, alpha 4	207964_x_at
KIR2DS2	Killer cell immunoglobulin-like receptor, two	216676_x_at
KIR2DS5	Killer cell immunoglobulin-like receptor, two	208122_x_at
KIR3DL1	Killer cell immunoglobulin-like receptor, three	211397_x_at
KIR3DL2	Killer cell immunoglobulin-like receptor, three	207314_x_at
LTA	Lymphotoxin alpha (TNF superfamily,	206975_at
Neuroactive Ligand-Receptor Interaction (p-value = 1.11E-04)		
ADRA2B	Adrenergic, alpha-2B-, receptor	208544_at
CCAR1	Cholecystokinin A receptor	211174_s_at
CHRM2	Cholinergic receptor, muscarinic 2	221330_at
CHRM5	Cholinergic receptor, muscarinic 5	221347_at
DRD2	Dopamine receptor D2	216938_x_at
EDG6	Endothelial differentiation, G-protein-coupled receptor 6	206437_at
FSHB	Follicle stimulating hormone, beta polypeptide	214489_at
GABRA1	Gamma-aminobutyric acid (GABA) A receptor, alpha 1	206678_at
GABRD	Gamma-aminobutyric acid (GABA) A receptor, delta	208457_at
GABRG2	Gamma-aminobutyric acid (GABA) A receptor, gamma 2	206849_at
GABRR2	Gamma-aminobutyric acid (GABA) receptor, rho 2	208217_at
GHRHR	Growth hormone releasing hormone receptor	211545_at
GLP1R	Glucagon-like peptide 1 receptor	208390_s_at
GLRA1	Glycine receptor, alpha 1 (startle disease/hyperkplexia, stiff man syndrome)	207972_at
GNRH2	Gonadotropin-releasing hormone 2	208519_x_at
GPR51	G protein-coupled receptor 51	217077_s_at
HRR1	Histamine receptor H1	216738_at
HTR4	5-hydroxytryptamine (serotonin) receptor 4	207578_s_at 216939_s_at
HTR6	5-hydroxytryptamine (serotonin) receptor 6	206944_at
MC2R	Melanocortin 2 receptor (adrenocorticotrophic hormone)	208568_at
NPY2R	Neuropeptide Y receptor Y2	210730_s_at
OPRM1	Opioid receptor, mu 1	211359_s_at
C21-Steroid Hormone Metabolism (p-value = 3.60E-03)		
CYP11A1	Cytochrome P450, family 11, subfamily A, polypeptide 1	204309_at
CYP11B2	Cytochrome P450, family 11, subfamily B, polypeptide 2	214630_at
CYP17A1	Cytochrome P450, family 17, subfamily A, polypeptide 1	205502_at
CYP21A2	Cytochrome P450, family 21, subfamily A, polypeptide 2	214622_at

Supplementary
Figure 5, cont.

C.



**Supplementary
Figure 7**

