

Intra-tumor Heterogeneity and Precision of Microarray-Based Predictors of Breast Cancer Biology and Clinical Outcome

Datto et al

Supplemental Figure Legends

Supplemental Fig 1. Bootstrap analysis ($n_{boot} = 1000$) using the R/Bioconductor package 'Pvclust'³⁵ validates the robustness of the average correlation HCA performed on the 50 replicate samples (Figure 2A). Approximate Unbiased statistics (numbers in red) verify that all samples cluster at a significant level except for samples F1 and I1 (highlighted). Sample F discordance can be seen in both the HCA dendrogram in Fig 2A and the unscaled PCA plot in Fig 2B. One replicate from sample I demonstrates lower significance in clustering compared to the other two replicates. This can be seen in the difference in branch height on the original HCA, and in the unscaled PCA results.

Supplemental Fig 2. Predictive imprecision is directly related to the proportion of genes with high intra-tumor variance. A) The contribution of intra-tumor variance to total variance for genes included in each of the array-based predictors is demonstrated by A) histogram and individual scatterplots for predictors of B) ER pathway, C) recurrence, D) adriamycin sensitivity, and E) docetaxel sensitivity.

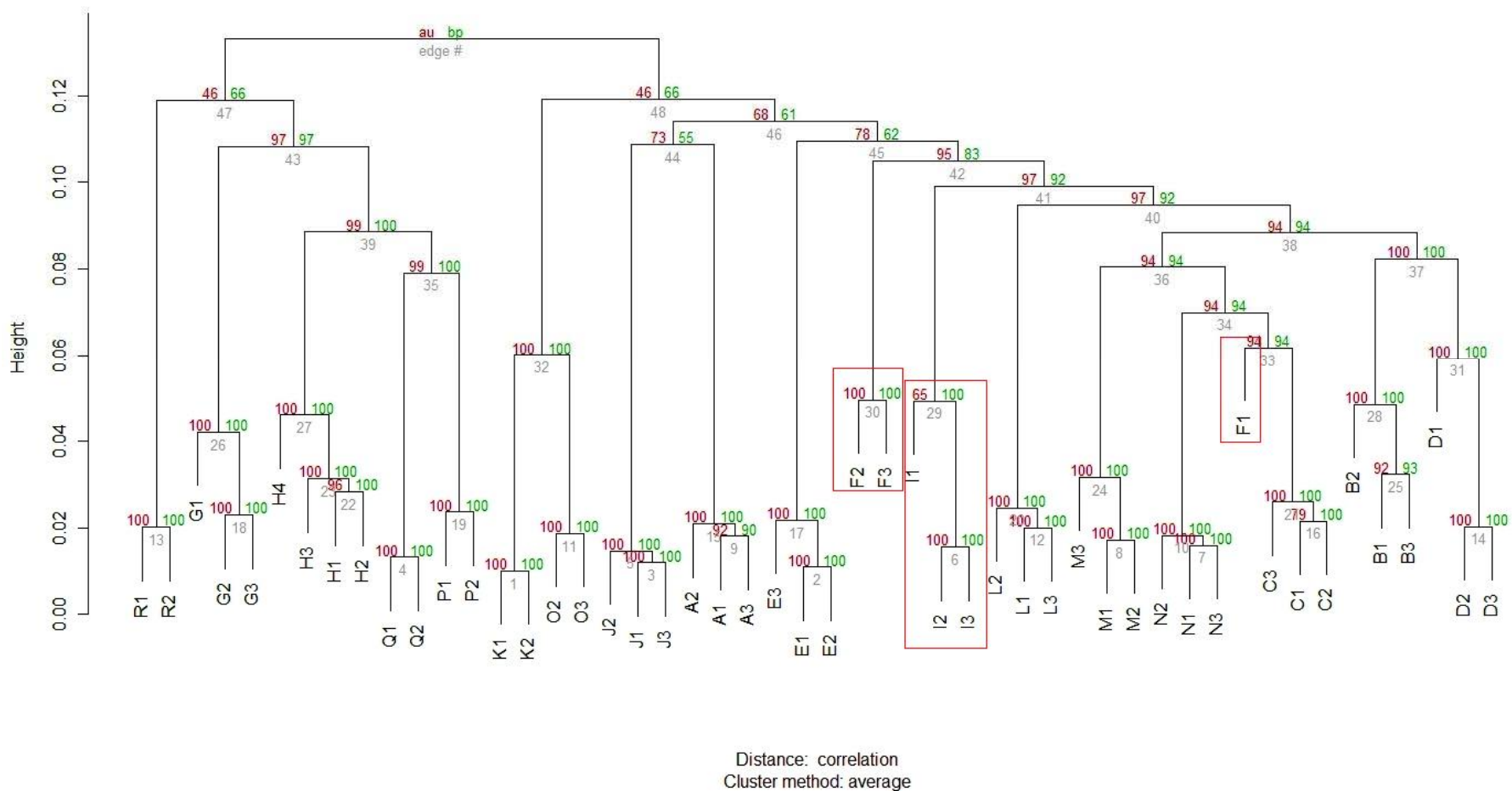
Table S5. Multivariate and multivariable analyses of variance for the principal components and the multi-gene predictors demonstrate that tumor content is not a confounding factor in these analyses. For the top two components identified in the PCA (Figure 2B), a multivariate ANOVA test was used to evaluate the effects of subject and tumor content on the global patterns of gene expression. As indicated by the Pillai-Bartlett test statistics, there is a strongly significant effect of subject on the summary measures (very small p-value), while tumor content is not significant. Likewise, for the four multi-gene

signatures under investigation (ER-pathway, Recurrence Risk, Adriamycin- and Docetaxel-chemosensitivity), ANOVA models are provided with the type I sum-of-squares test for each independent covariate. As indicated, the effect of replicates within subject is strongly significant, while tumor content has minimal impact on these signatures. Abbreviations: df, degrees of freedom; SS, sum of squares; MS, mean squares; Res, residual effects.

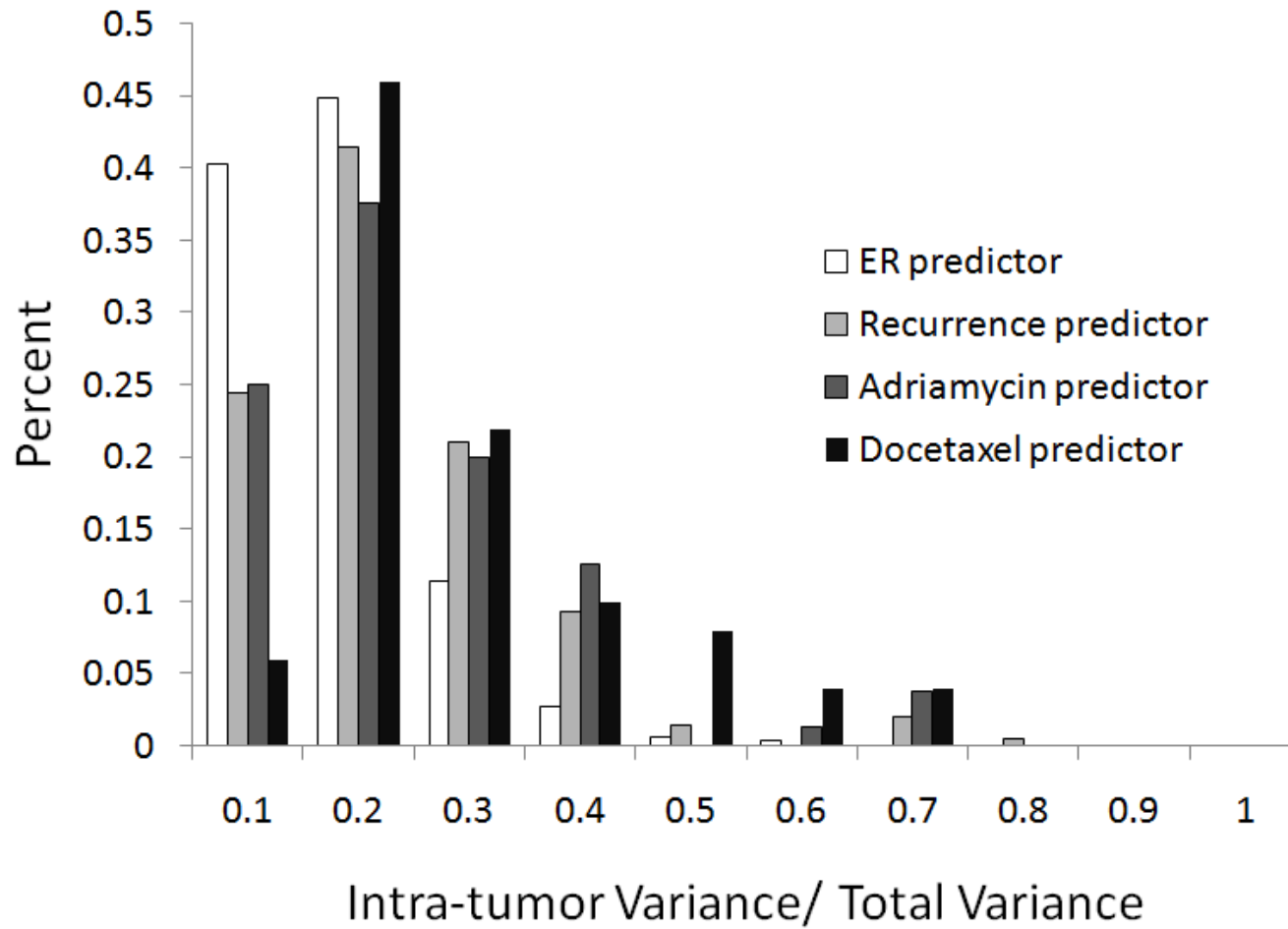
Supplemental Figures

Barry et al. Supplemental Figure 1

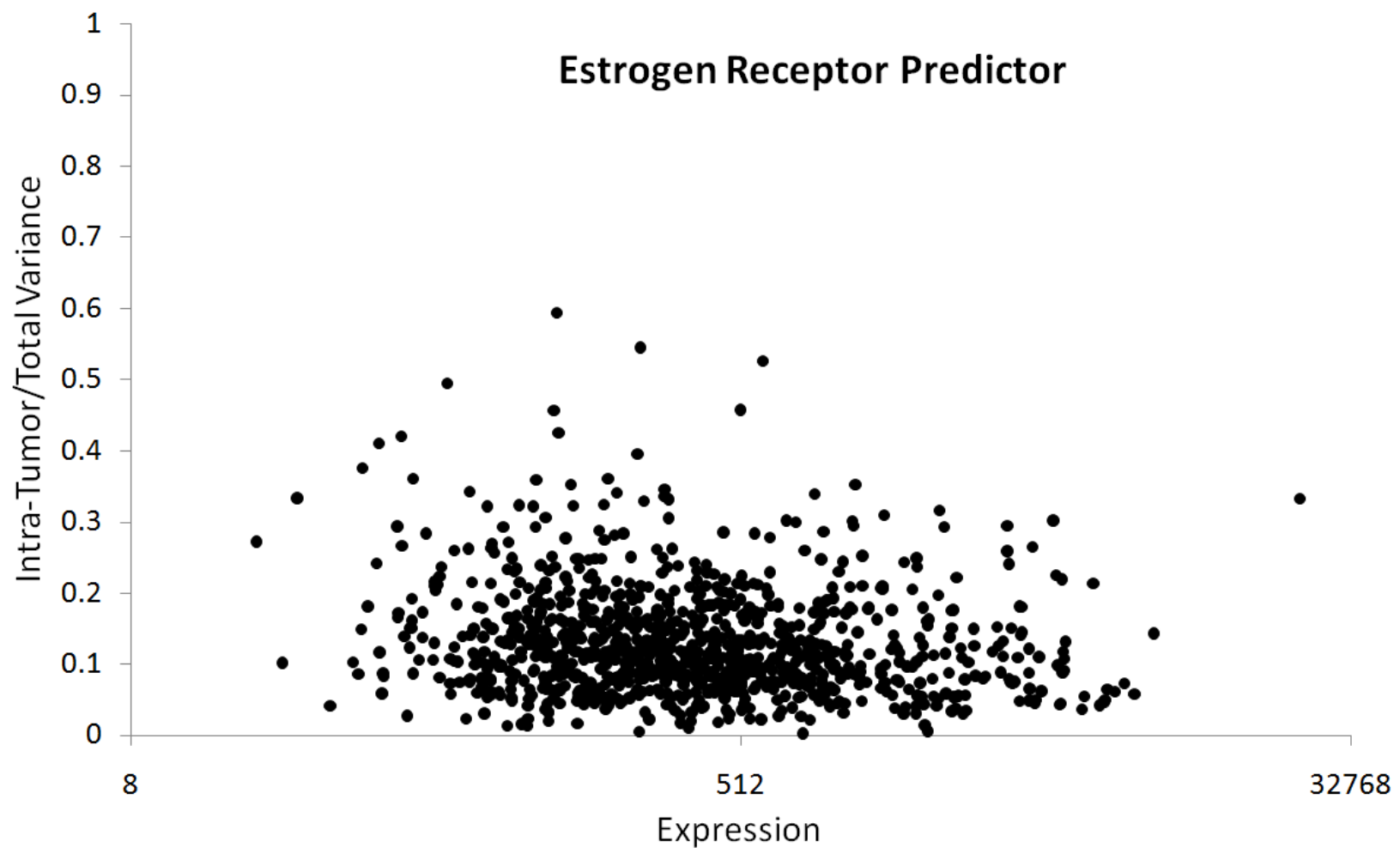
Cluster dendrogram with AU/BP values (%)



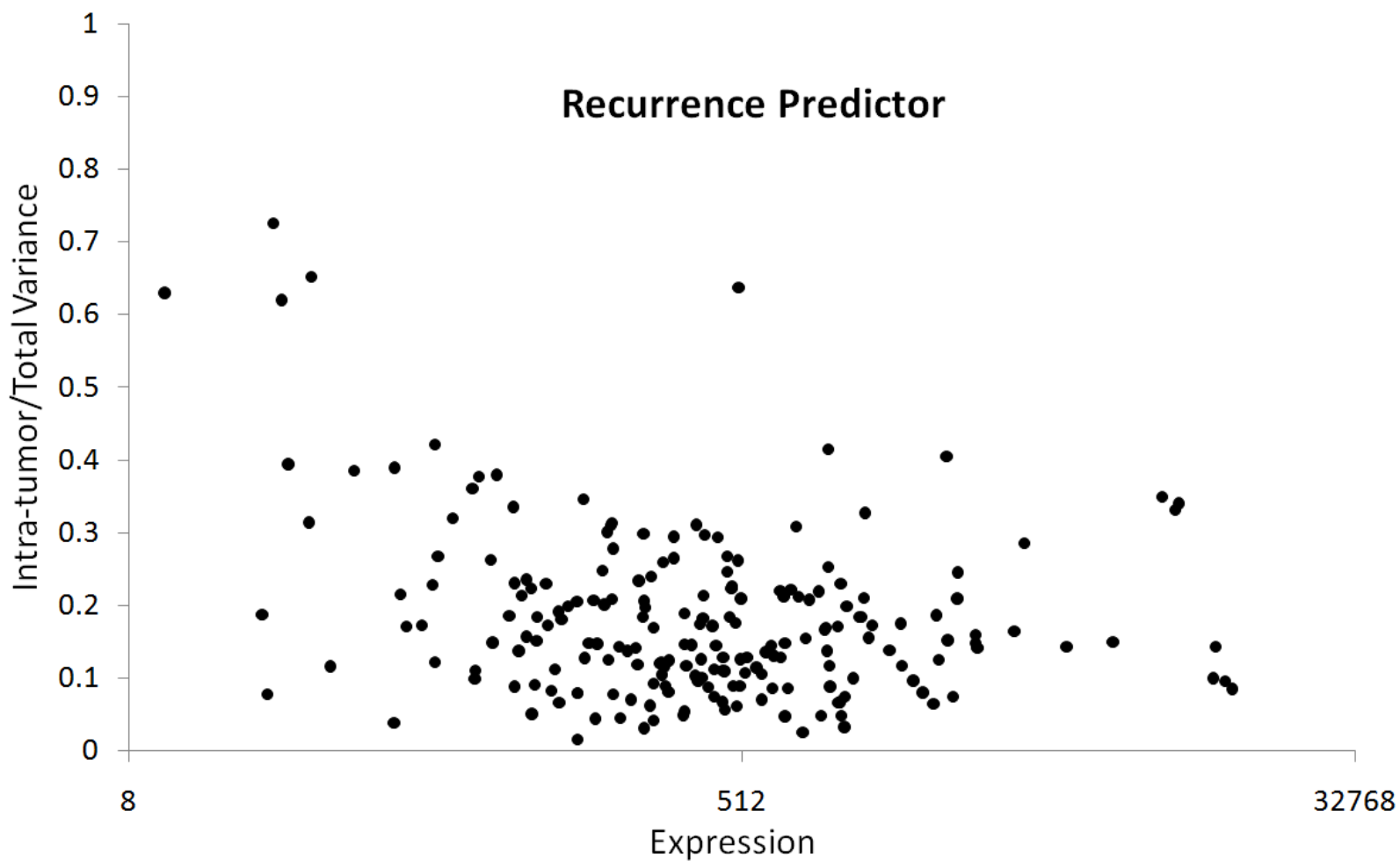
Barry et al. Supplemental Figure 2A



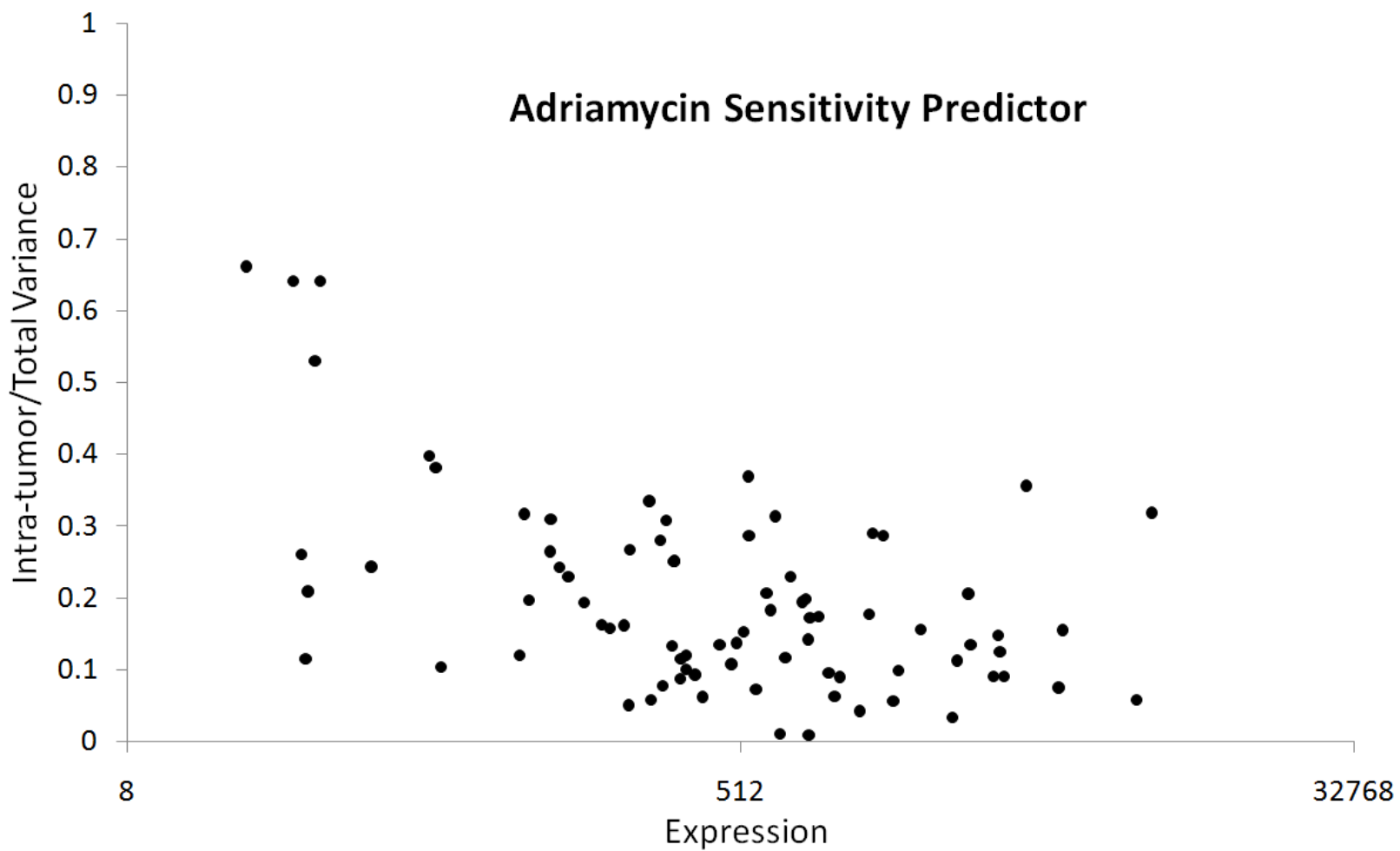
Barry et al. Supplemental Figure 2B



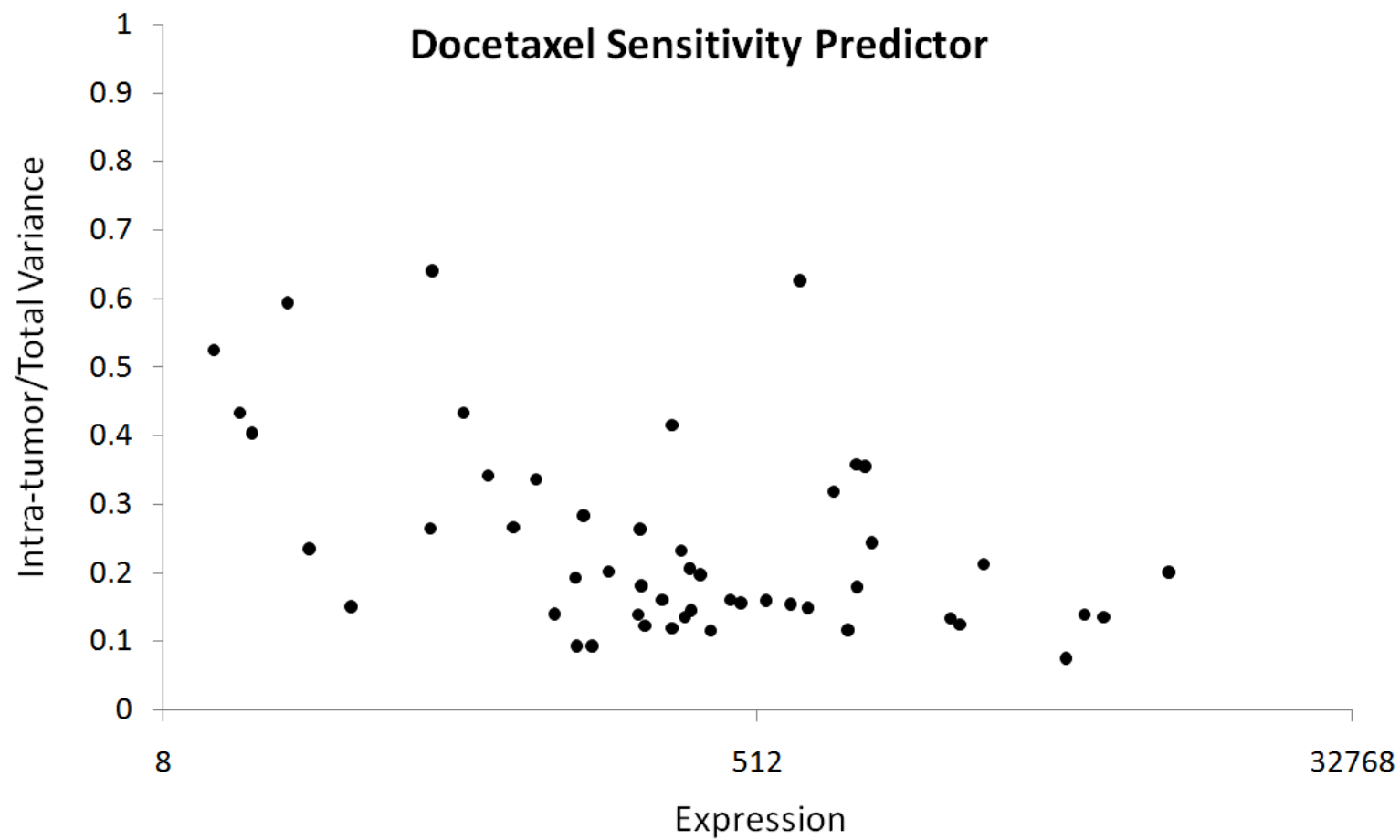
Barry et al. Supplemental Figure 2C



Barry et al. Supplemental Figure 2D



Barry et al. Supplemental Figure 2E



Supplemental Tables

Barry et al. Table S1

GSE3494 ER Predictor Gene List		
Probe Set ID	Gene Symbol	Gene Title
1053_at	RFC2	replication factor C (activator 1) 2, 40kDa
200039_s_at	PSMB2	proteasome (prosome, macropain) subunit, beta type, 2
200076_s_at	C19orf50	chromosome 19 open reading frame 50
200079_s_at	KARS	lysyl-tRNA synthetase
200086_s_at	COX4I1	cytochrome c oxidase subunit IV isoform 1
200628_s_at	WARS	tryptophanyl-tRNA synthetase
200629_at	WARS	tryptophanyl-tRNA synthetase
200670_at	XBP1	X-box binding protein 1
200687_s_at	SF3B3	splicing factor 3b, subunit 3, 130kDa
200711_s_at	SKP1	S-phase kinase-associated protein 1
200718_s_at	SKP1	S-phase kinase-associated protein 1
200719_at	SKP1	S-phase kinase-associated protein 1
200783_s_at	STMN1	stathmin 1
200790_at	ODC1	ornithine decarboxylase 1
200794_x_at	DAZAP2	DAZ associated protein 2
200804_at	TMBIM6	transmembrane BAX inhibitor motif containing 6
200810_s_at	CIRBP	cold inducible RNA binding protein
200811_at	CIRBP	cold inducible RNA binding protein
200875_s_at	NOP56	NOP56 ribonucleoprotein homolog (yeast)
200934_at	DEK	DEK oncogene
200979_at	PDHA1	pyruvate dehydrogenase (lipoamide) alpha 1
200980_s_at	PDHA1	pyruvate dehydrogenase (lipoamide) alpha 1
201030_x_at	LDHB	lactate dehydrogenase B
201037_at	PFKP	phosphofructokinase, platelet
201041_s_at	DUSP1	dual specificity phosphatase 1
201056_at	GOLGB1	golgin B1, golgi integral membrane protein

201057_s_at	GOLGB1	golgin B1, golgi integral membrane protein
201064_s_at	PABPC4	poly(A) binding protein, cytoplasmic 4 (inducible form)
201068_s_at	PSMC2	proteasome (prosome, macropain) 26S subunit, ATPase, 2
201077_s_at	NHP2L1	NHP2 non-histone chromosome protein 2-like 1 (S. cerevisiae)
201088_at	KPNA2	karyopherin alpha 2 (RAG cohort 1, importin alpha 1)
201124_at	ITGB5	integrin, beta 5
201125_s_at	ITGB5	integrin, beta 5
201169_s_at	BHLHE40	basic helix-loop-helix family, member e40
201170_s_at	BHLHE40	basic helix-loop-helix family, member e40
201189_s_at	ITPR3	inositol 1,4,5-triphosphate receptor, type 3
201195_s_at	SLC7A5	solute carrier family 7 (cationic amino acid transporter, y+ system), member 5
201196_s_at	AMD1	adenosylmethionine decarboxylase 1
201197_at	AMD1	adenosylmethionine decarboxylase 1
201201_at	CSTB	cystatin B (stefin B)
201202_at	PCNA	proliferating cell nuclear antigen
201231_s_at	ENO1	enolase 1, (alpha)
201236_s_at	BTG2	BTG family, member 2
201266_at	TXNRD1	thioredoxin reductase 1
201275_at	FDPS	farnesyl diphosphate synthase (farnesyl pyrophosphate synthetase, dimethylallyltransferase)
201276_at	RAB5B	RAB5B, member RAS oncogene family
201305_x_at	ANP32B	acidic (leucine-rich) nuclear phosphoprotein 32 family, member B
201306_s_at	ANP32B	acidic (leucine-rich) nuclear phosphoprotein 32 family, member B
201311_s_at	SH3BGRL	SH3 domain binding glutamic acid-rich protein like
201327_s_at	CCT6A	chaperonin containing TCP1, subunit 6A (zeta 1)
201349_at	SLC9A3R1	solute carrier family 9 (sodium/hydrogen exchanger), member 3 regulator 1
201360_at	CST3	cystatin C
201362_at	IVNS1ABP	influenza virus NS1A binding protein
201383_s_at	LOC100133166 /// NBR1	similar to neighbor of BRCA1 gene 1 /// neighbor of BRCA1 gene 1
201384_s_at	LOC100133166 /// NBR1	similar to neighbor of BRCA1 gene 1 /// neighbor of BRCA1 gene 1
201394_s_at	RBM5	RNA binding motif protein 5
201395_at	RBM5	RNA binding motif protein 5
201397_at	PHGDH	phosphoglycerate dehydrogenase
201412_at	LRP10	low density lipoprotein receptor-related protein 10

201455_s_at	NPEPPS	aminopeptidase puromycin sensitive
201479_at	DKC1	dyskeratosis congenita 1, dyskerin
201487_at	CTSC	cathepsin C
201492_s_at	RPL41	ribosomal protein L41
201508_at	IGFBP4	insulin-like growth factor binding protein 4
201516_at	SRM	spermidine synthase
201584_s_at	DDX39	DEAD (Asp-Glu-Ala-Asp) box polypeptide 39
201587_s_at	IRAK1	interleukin-1 receptor-associated kinase 1
201591_s_at	NISCH	nischarin
201596_x_at	KRT18	keratin 18
201658_at	ARL1	ADP-ribosylation factor-like 1
201685_s_at	TOX4	TOX high mobility group box family member 4
201710_at	MYBL2	v-myb myeloblastosis viral oncogene homolog (avian)-like 2
201725_at	CDC123	cell division cycle 123 homolog (S. cerevisiae)
201755_at	MCM5	minichromosome maintenance complex component 5
201757_at	NDUFS5 /// RPL10	NADH dehydrogenase (ubiquinone) Fe-S protein 5, 15kDa (NADH-coenzyme Q reductase) /// ribosomal protein L10
201761_at	MTHFD2	methylenetetrahydrofolate dehydrogenase (NADP+ dependent) 2, methenyltetrahydrofolate cyclohydrolase
201770_at	SNRPA	small nuclear ribonucleoprotein polypeptide A
201778_s_at	KIAA0494	KIAA0494
201790_s_at	DHCR7	7-dehydrocholesterol reductase
201791_s_at	DHCR7	7-dehydrocholesterol reductase
201795_at	LBR	lamin B receptor
201825_s_at	SCCPDH	saccharopine dehydrogenase (putative)
201826_s_at	SCCPDH	saccharopine dehydrogenase (putative)
201833_at	HDAC2	histone deacetylase 2
201834_at	PRKAB1	protein kinase, AMP-activated, beta 1 non-catalytic subunit
201835_s_at	PRKAB1	protein kinase, AMP-activated, beta 1 non-catalytic subunit
201841_s_at	HSPB1	heat shock 27kDa protein 1
201853_s_at	CDC25B	cell division cycle 25 homolog B (S. pombe)
201860_s_at	PLAT	plasminogen activator, tissue
201886_at	WDR23	WD repeat domain 23
201890_at	RRM2	ribonucleotide reductase M2 polypeptide
201914_s_at	SEC63	SEC63 homolog (S. cerevisiae)

201916_s_at	SEC63	SEC63 homolog (S. cerevisiae)
201930_at	MCM6	minichromosome maintenance complex component 6
201938_at	CDK2AP1	cyclin-dependent kinase 2 associated protein 1
201948_at	GNL2	guanine nucleotide binding protein-like 2 (nucleolar)
201970_s_at	NASP	nuclear autoantigenic sperm protein (histone-binding)
201976_s_at	MYO10	myosin X
202001_s_at	NDUFA6	NADH dehydrogenase (ubiquinone) 1 alpha subcomplex, 6, 14kDa
202005_at	ST14	suppression of tumorigenicity 14 (colon carcinoma)
202080_s_at	TRAK1	trafficking protein, kinesin binding 1
202088_at	SLC39A6	solute carrier family 39 (zinc transporter), member 6
202089_s_at	SLC39A6	solute carrier family 39 (zinc transporter), member 6
202094_at	BIRC5	baculoviral IAP repeat-containing 5
202095_s_at	BIRC5	baculoviral IAP repeat-containing 5
202110_at	COX7B	cytochrome c oxidase subunit VIIb
202146_at	IFRD1	interferon-related developmental regulator 1
202147_s_at	IFRD1	interferon-related developmental regulator 1
202188_at	NUP93	nucleoporin 93kDa
202200_s_at	SRPK1	SFRS protein kinase 1
202204_s_at	AMFR	autocrine motility factor receptor
202208_s_at	ARL4C	ADP-ribosylation factor-like 4C
202233_s_at	UQCRH	ubiquinol-cytochrome c reductase hinge protein
202240_at	PLK1	polo-like kinase 1 (Drosophila)
202268_s_at	NAE1	NEDD8 activating enzyme E1 subunit 1
202269_x_at	GBP1	guanylate binding protein 1, interferon-inducible, 67kDa
202270_at	GBP1	guanylate binding protein 1, interferon-inducible, 67kDa
202276_at	SHFM1	split hand/foot malformation (ectrodactyly) type 1
202307_s_at	TAP1	transporter 1, ATP-binding cassette, sub-family B (MDR/TAP)
202329_at	CSK	c-src tyrosine kinase
202338_at	TK1	thymidine kinase 1, soluble
202357_s_at	C2 /// CFB	complement component 2 /// complement factor B
202370_s_at	CBFB	core-binding factor, beta subunit
202371_at	TCEAL4	transcription elongation factor A (SII)-like 4
202376_at	SERPINA3	serpin peptidase inhibitor, clade A (alpha-1 antiproteinase, antitrypsin), member 3

202409_at	IGF2 /// INS-IGF2	insulin-like growth factor 2 (somatomedin A) /// INS-IGF2 readthrough transcript
202412_s_at	USP1	ubiquitin specific peptidase 1
202454_s_at	ERBB3	v-erb-b2 erythroblastic leukemia viral oncogene homolog 3 (avian)
202466_at	POLS	polymerase (DNA directed) sigma
202483_s_at	RANBP1	RAN binding protein 1
202494_at	PPIE	peptidylprolyl isomerase E (cyclophilin E)
202501_at	MAPRE2	microtubule-associated protein, RP/EB family, member 2
202511_s_at	ATG5	ATG5 autophagy related 5 homolog (S. cerevisiae)
202554_s_at	GSTM3	glutathione S-transferase mu 3 (brain)
202580_x_at	FOXM1	forkhead box M1
202589_at	TYMS	thymidylate synthetase
202599_s_at	NRIP1	nuclear receptor interacting protein 1
202613_at	CTPS	CTP synthase
202622_s_at	ATXN2	ataxin 2
202623_at	EAPP	E2F-associated phosphoprotein
202625_at	LYN	v-yes-1 Yamaguchi sarcoma viral related oncogene homolog
202641_at	ARL3	ADP-ribosylation factor-like 3
202679_at	NPC1	Niemann-Pick disease, type C1
202698_x_at	COX4I1	cytochrome c oxidase subunit IV isoform 1
202705_at	CCNB2	cyclin B2
202718_at	IGFBP2	insulin-like growth factor binding protein 2, 36kDa
202719_s_at	TES	testis derived transcript (3 LIM domains)
202720_at	TES	testis derived transcript (3 LIM domains)
202735_at	EBP	emopamil binding protein (sterol isomerase)
202752_x_at	SLC7A8	solute carrier family 7 (cationic amino acid transporter, y+ system), member 8
202754_at	R3HDM1	R3H domain containing 1
202756_s_at	GPC1	glypican 1
202772_at	HMGCL	3-hydroxymethyl-3-methylglutaryl-Coenzyme A lyase
202776_at	DNTTIP2	deoxynucleotidyltransferase, terminal, interacting protein 2
202779_s_at	LOC731049 /// UBE2S	similar to Ubiquitin-conjugating enzyme E2S (Ubiquitin-conjugating enzyme E2-24 kDa)
202808_at	C10orf26	chromosome 10 open reading frame 26
202814_s_at	HEXIM1	hexamethylene bis-acetamide inducible 1
202815_s_at	HEXIM1	hexamethylene bis-acetamide inducible 1

202819_s_at	TCEB3	transcription elongation factor B (SIII), polypeptide 3 (110kDa, elongin A)
202858_at	U2AF1	U2 small nuclear RNA auxiliary factor 1
202870_s_at	CDC20	cell division cycle 20 homolog (S. cerevisiae)
202896_s_at	SIRPA	signal-regulatory protein alpha
202908_at	WFS1	Wolfram syndrome 1 (wolframin)
202917_s_at	S100A8	S100 calcium binding protein A8
202932_at	YES1	v-yes-1 Yamaguchi sarcoma viral oncogene homolog 1
202933_s_at	YES1	v-yes-1 Yamaguchi sarcoma viral oncogene homolog 1
202951_at	STK38	serine/threonine kinase 38
202954_at	UBE2C	ubiquitin-conjugating enzyme E2C
202961_s_at	ATP5J2	ATP synthase, H ⁺ transporting, mitochondrial F0 complex, subunit F2
202982_s_at	ACOT1 /// ACOT2	acyl-CoA thioesterase 1 /// acyl-CoA thioesterase 2
202996_at	POLD4	polymerase (DNA-directed), delta 4
203009_at	BCAM	basal cell adhesion molecule (Lutheran blood group)
203045_at	NINJ1	ninjurin 1
203050_at	TP53BP1	tumor protein p53 binding protein 1
203066_at	GALNAC4S-6ST	B cell RAG associated protein
203071_at	SEMA3B	sema domain, immunoglobulin domain (Ig), short basic domain, secreted, (semaphorin) 3B
203073_at	COG2	component of oligomeric golgi complex 2
203120_at	TP53BP2	tumor protein p53 binding protein, 2
203139_at	DAPK1	death-associated protein kinase 1
203143_s_at	KIAA0040	KIAA0040
203144_s_at	KIAA0040	KIAA0040
203149_at	PVRL2	poliovirus receptor-related 2 (herpesvirus entry mediator B)
203173_s_at	C16orf62	chromosome 16 open reading frame 62
203187_at	DOCK1	dedicator of cytokinesis 1
203226_s_at	TSPAN31	tetraspanin 31
203234_at	UPP1	uridine phosphorylase 1
203246_s_at	TUSC4	tumor suppressor candidate 4
203263_s_at	ARHGEF9	Cdc42 guanine nucleotide exchange factor (GEF) 9
203276_at	LMNB1	lamin B1
203283_s_at	HS2ST1	heparan sulfate 2-O-sulfotransferase 1
203287_at	LAD1	ladinin 1

203315_at	NCK2	NCK adaptor protein 2
203358_s_at	EZH2	enhancer of zeste homolog 2 (Drosophila)
203362_s_at	MAD2L1	MAD2 mitotic arrest deficient-like 1 (yeast)
203396_at	PSMA4	proteasome (prosome, macropain) subunit, alpha type, 4
203397_s_at	GALNT3	UDP-N-acetyl-alpha-D-galactosamine:polypeptide N-acetylgalactosaminyltransferase 3 (GalNAc-T3)
203405_at	PSMG1	proteasome (prosome, macropain) assembly chaperone 1
203418_at	CCNA2	cyclin A2
203422_at	POLD1	polymerase (DNA directed), delta 1, catalytic subunit 125kDa
203428_s_at	ASF1A	ASF1 anti-silencing function 1 homolog A (S. cerevisiae)
203430_at	HEBP2	heme binding protein 2
203438_at	STC2	stanniocalcin 2
203439_s_at	STC2	stanniocalcin 2
203453_at	SCNN1A	sodium channel, nonvoltage-gated 1 alpha
203455_s_at	SAT1	spermidine/spermine N1-acetyltransferase 1
203476_at	TPBG	trophoblast glycoprotein
203513_at	SPG11	spastic paraplegia 11 (autosomal recessive)
203538_at	CAMLG	calcium modulating ligand
203554_x_at	PTTG1	pituitary tumor-transforming 1
203571_s_at	C10orf116	chromosome 10 open reading frame 116
203604_at	ZNF516	zinc finger protein 516
203614_at	UTP14C	UTP14, U3 small nucleolar ribonucleoprotein, homolog C (yeast)
203627_at	IGF1R	insulin-like growth factor 1 receptor
203628_at	IGF1R	insulin-like growth factor 1 receptor
203647_s_at	FDX1	ferredoxin 1
203657_s_at	CTSF	cathepsin F
203663_s_at	COX5A	cytochrome c oxidase subunit Va
203682_s_at	IVD	isovaleryl Coenzyme A dehydrogenase
203685_at	BCL2	B-cell CLL/lymphoma 2
203692_s_at	E2F3	E2F transcription factor 3
203693_s_at	E2F3	E2F transcription factor 3
203696_s_at	RFC2	replication factor C (activator 1) 2, 40kDa
203702_s_at	TTL4	tubulin tyrosine ligase-like family, member 4
203710_at	ITPR1	inositol 1,4,5-triphosphate receptor, type 1

203712_at	KIAA0020	KIAA0020
203740_at	MPHOSPH6	M-phase phosphoprotein 6
203749_s_at	RARA	retinoic acid receptor, alpha
203755_at	BUB1B	budding uninhibited by benzimidazoles 1 homolog beta (yeast)
203756_at	ARHGEF17	Rho guanine nucleotide exchange factor (GEF) 17
203764_at	DLGAP5	discs, large (Drosophila) homolog-associated protein 5
203775_at	SLC25A13	solute carrier family 25, member 13 (citrin)
203805_s_at	FANCA	Fanconi anemia, complementation group A
203806_s_at	FANCA	Fanconi anemia, complementation group A
203828_s_at	IL32	interleukin 32
203834_s_at	TGOLN2	trans-golgi network protein 2
203856_at	VRK1	vaccinia related kinase 1
203859_s_at	PALM	paralemmin
203896_s_at	PLCB4	phospholipase C, beta 4
203921_at	CHST2	carbohydrate (N-acetylglucosamine-6-O) sulfotransferase 2
203927_at	NFKBIE	nuclear factor of kappa light polypeptide gene enhancer in B-cells inhibitor, epsilon
203928_x_at	MAPT	microtubule-associated protein tau
203929_s_at	MAPT	microtubule-associated protein tau
203930_s_at	MAPT	microtubule-associated protein tau
203956_at	MORC2	MORC family CW-type zinc finger 2
203961_at	NEBL	nebulette
203962_s_at	NEBL	nebulette
203963_at	CA12	carbonic anhydrase XII
203964_at	NMI	N-myc (and STAT) interactor
203975_s_at	CHAF1A	chromatin assembly factor 1, subunit A (p150)
203988_s_at	FUT8	fucosyltransferase 8 (alpha (1,6) fucosyltransferase)
204023_at	RFC4	replication factor C (activator 1) 4, 37kDa
204029_at	CELSR2	cadherin, EGF LAG seven-pass G-type receptor 2 (flamingo homolog, Drosophila)
204033_at	TRIP13	thyroid hormone receptor interactor 13
204045_at	TCEAL1	transcription elongation factor A (SII)-like 1
204059_s_at	ME1	malic enzyme 1, NADP(+)-dependent, cytosolic
204060_s_at	PRKX /// PRKY	protein kinase, X-linked /// protein kinase, Y-linked
204061_at	PRKX	protein kinase, X-linked

204067_at	SUOX	sulfite oxidase
204072_s_at	FRY	furry homolog (Drosophila)
204088_at	P2RX4	purinergic receptor P2X, ligand-gated ion channel, 4
204092_s_at	AURKA	aurora kinase A
204117_at	PREP	prolyl endopeptidase
204126_s_at	CDC45L	CDC45 cell division cycle 45-like (S. cerevisiae)
204127_at	RFC3	replication factor C (activator 1) 3, 38kDa
204139_x_at	MZF1	myeloid zinc finger 1
204146_at	RAD51AP1	RAD51 associated protein 1
204162_at	NDC80	NDC80 homolog, kinetochore complex component (S. cerevisiae)
204165_at	WASF1	WAS protein family, member 1
204170_s_at	CKS2	CDC28 protein kinase regulatory subunit 2
204197_s_at	RUNX3	runt-related transcription factor 3
204198_s_at	RUNX3	runt-related transcription factor 3
204203_at	CEBPG	CCAAT/enhancer binding protein (C/EBP), gamma
204217_s_at	RTN2	reticulon 2
204228_at	PPIH	peptidylprolyl isomerase H (cyclophilin H)
204231_s_at	FAAH	fatty acid amide hydrolase
204244_s_at	DBF4	DBF4 homolog (S. cerevisiae)
204259_at	MMP7	matrix metalloproteinase 7 (matrilysin, uterine)
204304_s_at	PROM1	prominin 1
204315_s_at	GTSE1	G-2 and S-phase expressed 1
204318_s_at	GTSE1	G-2 and S-phase expressed 1
204343_at	ABCA3	ATP-binding cassette, sub-family A (ABC1), member 3
204372_s_at	KHSRP	KH-type splicing regulatory protein
204398_s_at	EML2	echinoderm microtubule associated protein like 2
204401_at	KCNN4	potassium intermediate/small conductance calcium-activated channel, subfamily N, member 4
204430_s_at	SLC2A5	solute carrier family 2 (facilitated glucose/fructose transporter), member 5
204444_at	KIF11	kinesin family member 11
204470_at	CXCL1	chemokine (C-X-C motif) ligand 1 (melanoma growth stimulating activity, alpha)
204475_at	MMP1	matrix metalloproteinase 1 (interstitial collagenase)
204495_s_at	C15orf39	chromosome 15 open reading frame 39
204497_at	ADCY9	adenylate cyclase 9

204500_s_at	AGTPBP1	ATP/GTP binding protein 1
204508_s_at	CA12	carbonic anhydrase XII
204510_at	CDC7	cell division cycle 7 homolog (S. cerevisiae)
204514_at	DPH2	DPH2 homolog (S. cerevisiae)
204533_at	CXCL10	chemokine (C-X-C motif) ligand 10
204541_at	SEC14L2	SEC14-like 2 (S. cerevisiae)
204558_at	RAD54L	RAD54-like (S. cerevisiae)
204568_at	KIAA0831	KIAA0831
204593_s_at	SMCR7L	Smith-Magenis syndrome chromosome region, candidate 7-like
204603_at	EXO1	exonuclease 1
204605_at	CGRRF1	cell growth regulator with ring finger domain 1
204613_at	PLCG2	phospholipase C, gamma 2 (phosphatidylinositol-specific)
204623_at	TFF3	trefoil factor 3 (intestinal)
204649_at	TROAP	trophinin associated protein (tastin)
204667_at	FOXA1	forkhead box A1
204675_at	SRD5A1	steroid-5-alpha-reductase, alpha polypeptide 1 (3-oxo-5 alpha-steroid delta 4-dehydrogenase alpha 1)
204686_at	IRS1	insulin receptor substrate 1
204695_at	CDC25A	cell division cycle 25 homolog A (S. pombe)
204702_s_at	NFE2L3	nuclear factor (erythroid-derived 2)-like 3
204703_at	IFT88	intraflagellar transport 88 homolog (Chlamydomonas)
204735_at	PDE4A	phosphodiesterase 4A, cAMP-specific (phosphodiesterase E2 dunce homolog, Drosophila)
204766_s_at	NUDT1	nudix (nucleoside diphosphate linked moiety X)-type motif 1
204767_s_at	FEN1	flap structure-specific endonuclease 1
204769_s_at	TAP2	transporter 2, ATP-binding cassette, sub-family B (MDR/TAP)
204775_at	CHAF1B	chromatin assembly factor 1, subunit B (p60)
204785_x_at	IFNAR2	interferon (alpha, beta and omega) receptor 2
204786_s_at	IFNAR2	interferon (alpha, beta and omega) receptor 2
204798_at	MYB	v-myb myeloblastosis viral oncogene homolog (avian)
204820_s_at	BTN3A2 /// BTN3A3	butyrophilin, subfamily 3, member A2 /// butyrophilin, subfamily 3, member A3
204822_at	TTK	TTK protein kinase
204825_at	MELK	maternal embryonic leucine zipper kinase
204837_at	MTMR9	myotubularin related protein 9
204862_s_at	NME3	non-metastatic cells 3, protein expressed in

204863_s_at	IL6ST	interleukin 6 signal transducer (gp130, oncostatin M receptor)
204881_s_at	UGCG	UDP-glucose ceramide glucosyltransferase
204887_s_at	PLK4	polo-like kinase 4 (Drosophila)
204913_s_at	SOX11	SRY (sex determining region Y)-box 11
204914_s_at	SOX11	SRY (sex determining region Y)-box 11
204915_s_at	SOX11	SRY (sex determining region Y)-box 11
204934_s_at	HPN	hepsin
204947_at	E2F1	E2F transcription factor 1
204962_s_at	CENPA	centromere protein A
204966_at	BAI2	brain-specific angiogenesis inhibitor 2
204975_at	EMP2	epithelial membrane protein 2
205008_s_at	CIB2	calcium and integrin binding family member 2
205009_at	TFF1	trefoil factor 1
205016_at	TGFA	transforming growth factor, alpha
205024_s_at	RAD51	RAD51 homolog (RecA homolog, E. coli) (S. cerevisiae)
205030_at	FABP7	fatty acid binding protein 7, brain
205034_at	CCNE2	cyclin E2
205046_at	CENPE	centromere protein E, 312kDa
205057_s_at	IDUA	iduronidase, alpha-L-
205059_s_at	IDUA	iduronidase, alpha-L-
205066_s_at	ENPP1	ectonucleotide pyrophosphatase/phosphodiesterase 1
205074_at	SLC22A5	solute carrier family 22 (organic cation/carnitine transporter), member 5
205081_at	CRIP1	cysteine-rich protein 1 (intestinal)
205109_s_at	ARHGEF4	Rho guanine nucleotide exchange factor (GEF) 4
205141_at	ANG	angiogenin, ribonuclease, RNase A family, 5
205158_at	RNASE4	ribonuclease, RNase A family, 4
205160_at	PEX11A	Peroxisomal biogenesis factor 11 alpha
205186_at	DNALI1	dynein, axonemal, light intermediate chain 1
205201_at	GLI3	GLI family zinc finger 3
205214_at	STK17B	serine/threonine kinase 17b
205240_at	GPSM2	G-protein signaling modulator 2 (AGS3-like, C. elegans)
205339_at	STIL	SCL/TAL1 interrupting locus
205347_s_at	TMSB15A	thymosin beta 15a

205354_at	GAMT	guanidinoacetate N-methyltransferase
205363_at	BBOX1	butyrobetaine (gamma), 2-oxoglutarate dioxygenase (gamma-butyrobetaine hydroxylase) 1
205376_at	INPP4B	inositol polyphosphate-4-phosphatase, type II, 105kDa
205379_at	CBR3	carbonyl reductase 3
205380_at	PDZK1	PDZ domain containing 1
205381_at	LRRC17	leucine rich repeat containing 17
205395_s_at	MRE11A	MRE11 meiotic recombination 11 homolog A (<i>S. cerevisiae</i>)
205403_at	IL1R2	interleukin 1 receptor, type II
205436_s_at	H2AFX	H2A histone family, member X
205447_s_at	MAP3K12	mitogen-activated protein kinase kinase kinase 12
205448_s_at	MAP3K12	mitogen-activated protein kinase kinase kinase 12
205471_s_at	DACH1	dachshund homolog 1 (<i>Drosophila</i>)
205487_s_at	VGLL1	vestigial like 1 (<i>Drosophila</i>)
205495_s_at	GNLY	granulysin
205548_s_at	BTG3	BTG family, member 3
205569_at	LAMP3	lysosomal-associated membrane protein 3
205593_s_at	PDE9A	phosphodiesterase 9A
205596_s_at	SMURF2	SMAD specific E3 ubiquitin protein ligase 2
205597_at	SLC44A4	solute carrier family 44, member 4
205613_at	SYT17	synaptotagmin XVII
205617_at	PRRG2	proline rich Gla (G-carboxyglutamic acid) 2
205644_s_at	SNRPG	small nuclear ribonucleoprotein polypeptide G
205646_s_at	PAX6	paired box 6
205671_s_at	HLA-DOB	major histocompatibility complex, class II, DO beta
205683_x_at	TPSAB1	tryptase alpha/beta 1
205696_s_at	GFRA1	GDNF family receptor alpha 1
205711_x_at	ATP5C1	ATP synthase, H ⁺ transporting, mitochondrial F1 complex, gamma polypeptide 1
205714_s_at	ZMYND10	zinc finger, MYND-type containing 10
205730_s_at	ABLIM3	actin binding LIM protein family, member 3
205733_at	BLM	Bloom syndrome, RecQ helicase-like
205734_s_at	AFF3	AF4/FMR2 family, member 3
205735_s_at	AFF3	AF4/FMR2 family, member 3
205776_at	FMO5	flavin containing monooxygenase 5

205794_s_at	NOVA1	neuro-oncological ventral antigen 1
205819_at	MARCO	macrophage receptor with collagenous structure
205860_x_at	FOLH1	folate hydrolase (prostate-specific membrane antigen) 1
205862_at	GREB1	GREB1 protein
205917_at	ZNF264	zinc finger protein 264
205936_s_at	HK3	hexokinase 3 (white cell)
205943_at	TDO2	tryptophan 2,3-dioxygenase
205948_at	PTPRT	protein tyrosine phosphatase, receptor type, T
205967_at	HIST1H4C	histone cluster 1, H4c
206023_at	NMU	neuromedin U
206055_s_at	SNRPA1	small nuclear ribonucleoprotein polypeptide A'
206060_s_at	PTPN22	protein tyrosine phosphatase, non-receptor type 22 (lymphoid)
206074_s_at	HMGA1	high mobility group AT-hook 1
206081_at	SLC24A1	solute carrier family 24 (sodium/potassium/calcium exchanger), member 1
206102_at	GINS1	GINS complex subunit 1 (Psf1 homolog)
206134_at	ADAMDEC1	ADAM-like, decysin 1
206197_at	NME5	non-metastatic cells 5, protein expressed in (nucleoside-diphosphate kinase)
206214_at	PLA2G7	phospholipase A2, group VII (platelet-activating factor acetylhydrolase, plasma)
206245_s_at	IVNS1ABP	influenza virus NS1A binding protein
206307_s_at	FOXD1	forkhead box D1
206364_at	KIF14	kinesin family member 14
206366_x_at	XCL1	chemokine (C motif) ligand 1
206391_at	RARRES1	retinoic acid receptor responder (tazarotene induced) 1
206392_s_at	RARRES1	retinoic acid receptor responder (tazarotene induced) 1
206401_s_at	MAPT	microtubule-associated protein tau
206407_s_at	CCL13	chemokine (C-C motif) ligand 13
206469_x_at	AKR7A3	aldo-keto reductase family 7, member A3 (aflatoxin aldehyde reductase)
206486_at	LAG3	lymphocyte-activation gene 3
206499_s_at	RCC1 /// SNHG3-RCC1	regulator of chromosome condensation 1 /// SNHG3-RCC1 readthrough transcript
206503_x_at	PML	promyelocytic leukemia
206600_s_at	LOC100133772 /// SLC16A5	similar to MCT /// solute carrier family 16, member 5 (monocarboxylic acid transporter 6)
206632_s_at	APOBEC3B	apolipoprotein B mRNA editing enzyme, catalytic polypeptide-like 3B
206734_at	JRKL	jerky homolog-like (mouse)

206754_s_at	CYP2B6 /// CYP2B7P1	cytochrome P450, family 2, subfamily B, polypeptide 6
206869_at	CHAD	chondroadherin
206974_at	CXCR6	chemokine (C-X-C motif) receptor 6
207030_s_at	CSRP2	cysteine and glycine-rich protein 2
207038_at	SLC16A6	solute carrier family 16, member 6 (monocarboxylic acid transporter 7)
207039_at	CDKN2A	cyclin-dependent kinase inhibitor 2A (melanoma, p16, inhibits CDK4)
207076_s_at	ASS1	argininosuccinate synthetase 1
207132_x_at	PFDN5	prefoldin subunit 5
207153_s_at	GLMN	glomulin, FKBP associated protein
207170_s_at	LETMD1	LETM1 domain containing 1
207351_s_at	SH2D2A	SH2 domain protein 2A
207551_s_at	MSL3	male-specific lethal 3 homolog (Drosophila)
207828_s_at	CENPF	centromere protein F, 350/400ka (mitosin)
207843_x_at	CYB5A	cytochrome b5 type A (microsomal)
207891_s_at	HAUS7 /// TREX2	HAUS augmin-like complex, subunit 7 /// three prime repair exonuclease 2
207998_s_at	CACNA1D	calcium channel, voltage-dependent, L type, alpha 1D subunit
208030_s_at	ADD1	adducin 1 (alpha)
208079_s_at	AURKA	aurora kinase A
208092_s_at	FAM49A	family with sequence similarity 49, member A
208103_s_at	ANP32E	acidic (leucine-rich) nuclear phosphoprotein 32 family, member E
208140_s_at	LRRRC48	leucine rich repeat containing 48
208190_s_at	LSR	lipolysis stimulated lipoprotein receptor
208305_at	PGR	progesterone receptor
208393_s_at	RAD50	RAD50 homolog (<i>S. cerevisiae</i>)
208433_s_at	LRP8	low density lipoprotein receptor-related protein 8, apolipoprotein e receptor
208451_s_at	C4A /// C4B	complement component 4A (Rodgers blood group) /// complement component 4B (Chido blood group)
208503_s_at	GATAD1	GATA zinc finger domain containing 1
208517_x_at	BTF3	basic transcription factor 3
208611_s_at	SPTAN1	spectrin, alpha, non-erythrocytic 1 (alpha-fodrin)
208613_s_at	FLNB	filamin B, beta (actin binding protein 278)
208614_s_at	FLNB	filamin B, beta (actin binding protein 278)
208616_s_at	PTP4A2	protein tyrosine phosphatase type IVA, member 2
208627_s_at	YBX1	Y box binding protein 1

208628_s_at	YBX1	Y box binding protein 1
208682_s_at	MAGED2	melanoma antigen family D, 2
208693_s_at	GARS	glycyl-tRNA synthetase
208712_at	CCND1	cyclin D1
208749_x_at	FLOT1	flotillin 1
208764_s_at	ATP5G2	ATP synthase, H ⁺ transporting, mitochondrial F0 complex, subunit C2 (subunit 9)
208788_at	ELOVL5	ELOVL family member 5, elongation of long chain fatty acids (FEN1/Elo2, SUR4/Elo3-like, yeast)
208795_s_at	MCM7	minichromosome maintenance complex component 7
208804_s_at	SFRS6	splicing factor, arginine/serine-rich 6
208823_s_at	PCK1	PCK1 protein kinase 1
208836_at	ATP1B3	ATPase, Na ⁺ /K ⁺ transporting, beta 3 polypeptide
208870_x_at	ATP5C1	ATP synthase, H ⁺ transporting, mitochondrial F1 complex, gamma polypeptide 1
208873_s_at	REEP5	receptor accessory protein 5
208905_at	CYCS	cytochrome c, somatic
208945_s_at	BECN1	beclin 1, autophagy related
208969_at	NDUFA9	NADH dehydrogenase (ubiquinone) 1 alpha subcomplex, 9, 39kDa
209002_s_at	CALCOCO1	calcium binding and coiled-coil domain 1
209004_s_at	FBXL5	F-box and leucine-rich repeat protein 5
209026_x_at	TUBB	tubulin, beta
209045_at	XPNPEP1	X-prolyl aminopeptidase (aminopeptidase P) 1, soluble
209123_at	QDPR	quinoid dihydropteridine reductase
209150_s_at	TM9SF1	transmembrane 9 superfamily member 1
209155_s_at	NT5C2	5'-nucleotidase, cytosolic II
209172_s_at	CENPF	centromere protein F, 350/400ka (mitosin)
209173_at	AGR2	anterior gradient homolog 2 (<i>Xenopus laevis</i>)
209189_at	FOS	v-fos FBJ murine osteosarcoma viral oncogene homolog
209195_s_at	ADCY6	adenylate cyclase 6
209204_at	LMO4	LIM domain only 4
209205_s_at	LMO4	LIM domain only 4
209212_s_at	KLF5	Kruppel-like factor 5 (intestinal)
209311_at	BCL2L2	BCL2-like 2
209339_at	SIAH2	seven in absentia homolog 2 (<i>Drosophila</i>)
209341_s_at	IKBKB	inhibitor of kappa light polypeptide gene enhancer in B-cells, kinase beta

209342_s_at	IKBKB	inhibitor of kappa light polypeptide gene enhancer in B-cells, kinase beta
209349_at	RAD50	RAD50 homolog (<i>S. cerevisiae</i>)
209360_s_at	RUNX1	runt-related transcription factor 1
209366_x_at	CYB5A	cytochrome b5 type A (microsomal)
209373_at	MALL	mal, T-cell differentiation protein-like
209375_at	XPC	xeroderma pigmentosum, complementation group C
209408_at	KIF2C	kinesin family member 2C
209443_at	SERPINA5	serpin peptidase inhibitor, clade A (alpha-1 antiproteinase, antitrypsin), member 5
209459_s_at	ABAT	4-aminobutyrate aminotransferase
209460_at	ABAT	4-aminobutyrate aminotransferase
209464_at	AURKB	aurora kinase B
209545_s_at	RIPK2	receptor-interacting serine-threonine kinase 2
209602_s_at	GATA3	GATA binding protein 3
209603_at	GATA3	GATA binding protein 3
209604_s_at	GATA3	GATA binding protein 3
209623_at	MCCC2	methylcrotonoyl-Coenzyme A carboxylase 2 (beta)
209624_s_at	MCCC2	methylcrotonoyl-Coenzyme A carboxylase 2 (beta)
209626_s_at	OSBPL3	oxysterol binding protein-like 3
209642_at	BUB1	budding uninhibited by benzimidazoles 1 homolog (yeast)
209644_x_at	CDKN2A	cyclin-dependent kinase inhibitor 2A (melanoma, p16, inhibits CDK4)
209680_s_at	KIFC1	kinesin family member C1
209681_at	SLC19A2	solute carrier family 19 (thiamine transporter), member 2
209696_at	FBP1	fructose-1,6-bisphosphatase 1
209714_s_at	CDKN3	cyclin-dependent kinase inhibitor 3
209740_s_at	PNPLA4	patatin-like phospholipase domain containing 4
209747_at	TGFB3	transforming growth factor, beta 3
209770_at	BTN3A1	butyrophilin, subfamily 3, member A1
209773_s_at	RRM2	ribonucleotide reductase M2 polypeptide
209791_at	PADI2	peptidyl arginine deiminase, type II
209799_at	PRKAA1	protein kinase, AMP-activated, alpha 1 catalytic subunit
209800_at	KRT16	keratin 16
209825_s_at	UCK2	uridine-cytidine kinase 2
209832_s_at	CDT1	chromatin licensing and DNA replication factor 1

209870_s_at	APBA2	amyloid beta (A4) precursor protein-binding, family A, member 2
209871_s_at	APBA2	amyloid beta (A4) precursor protein-binding, family A, member 2
209885_at	RHOD	ras homolog gene family, member D
209924_at	CCL18	chemokine (C-C motif) ligand 18 (pulmonary and activation-regulated)
209934_s_at	ATP2C1	ATPase, Ca ⁺⁺ transporting, type 2C, member 1
209939_x_at	CFLAR	CASP8 and FADD-like apoptosis regulator
209990_s_at	GABBR2	gamma-aminobutyric acid (GABA) B receptor, 2
210006_at	ABHD14A	abhydrolase domain containing 14A
210024_s_at	UBE2E3	ubiquitin-conjugating enzyme E2E 3 (UBC4/5 homolog, yeast)
210026_s_at	CARD10	caspase recruitment domain family, member 10
210029_at	IDO1	indoleamine 2,3-dioxygenase 1
210052_s_at	TPX2	TPX2, microtubule-associated, homolog (Xenopus laevis)
210053_at	TAF5	TAF5 RNA polymerase II, TATA box binding protein (TBP)-associated factor, 100kDa
210074_at	CTSL2	cathepsin L2
210085_s_at	ANXA9	annexin A9
210093_s_at	MAGOH	mago-nashi homolog, proliferation-associated (Drosophila)
210108_at	CACNA1D	calcium channel, voltage-dependent, L type, alpha 1D subunit
210139_s_at	PMP22	peripheral myelin protein 22
210142_x_at	FLOT1	flotillin 1
210163_at	CXCL11	chemokine (C-X-C motif) ligand 11
210164_at	GZMB	granzyme B (granzyme 2, cytotoxic T-lymphocyte-associated serine esterase 1)
210239_at	IRX5	iroquois homeobox 5
210272_at	CYP2B7P1	cytochrome P450, family 2, subfamily B, polypeptide 7 pseudogene 1
210347_s_at	BCL11A	B-cell CLL/lymphoma 11A (zinc finger protein)
210354_at	IFNG	interferon, gamma
210357_s_at	SMOX	spermine oxidase
210466_s_at	SERBP1	SERPINE1 mRNA binding protein 1
210546_x_at	CTAG1A /// CTAG1B	cancer/testis antigen 1A /// cancer/testis antigen 1B
210648_x_at	SNX3	sorting nexin 3
210652_s_at	TTC39A	tetratricopeptide repeat domain 39A
210735_s_at	CA12	carbonic anhydrase XII
210821_x_at	CENPA	centromere protein A
210826_x_at	RAD17	RAD17 homolog (S. pombe)

210908_s_at	PFDN5	prefoldin subunit 5
210958_s_at	MAST4	microtubule associated serine/threonine kinase family member 4
210959_s_at	SRD5A1	steroid-5-alpha-reductase, alpha polypeptide 1 (3-oxo-5 alpha-steroid delta 4-dehydrogenase alpha 1)
210983_s_at	MCM7	minichromosome maintenance complex component 7
210995_s_at	TRIM23	tripartite motif-containing 23
211000_s_at	IL6ST	interleukin 6 signal transducer (gp130, oncostatin M receptor)
211013_x_at	PML	promyelocytic leukemia
211042_x_at	MCAM	melanoma cell adhesion molecule
211056_s_at	SRD5A1	steroid-5-alpha-reductase, alpha polypeptide 1 (3-oxo-5 alpha-steroid delta 4-dehydrogenase alpha 1)
211122_s_at	CXCL11	chemokine (C-X-C motif) ligand 11
211248_s_at	CHRD	chordin
211519_s_at	KIF2C	kinesin family member 2C
211596_s_at	LRIG1	leucine-rich repeats and immunoglobulin-like domains 1
211605_s_at	RARA	retinoic acid receptor, alpha
211674_x_at	CTAG1A /// CTAG1B	cancer/testis antigen 1A /// cancer/testis antigen 1B
211679_x_at	GABBR2	gamma-aminobutyric acid (GABA) B receptor, 2
211712_s_at	ANXA9	annexin A9
211714_x_at	TUBB	tubulin, beta
211725_s_at	BID	BH3 interacting domain death agonist
211764_s_at	UBE2D1	ubiquitin-conjugating enzyme E2D 1 (UBC4/5 homolog, yeast)
211938_at	EIF4B	eukaryotic translation initiation factor 4B
211939_x_at	BTF3	basic transcription factor 3
211967_at	TMEM123	transmembrane protein 123
211986_at	AHNAK	AHNAK nucleoprotein
212020_s_at	MKI67	antigen identified by monoclonal antibody Ki-67
212022_s_at	MKI67	antigen identified by monoclonal antibody Ki-67
212023_s_at	MKI67	antigen identified by monoclonal antibody Ki-67
212099_at	RHOB	ras homolog gene family, member B
212141_at	MCM4	minichromosome maintenance complex component 4
212153_at	POGZ	pogo transposable element with ZNF domain
212156_at	VPS39	vacuolar protein sorting 39 homolog (S. cerevisiae)
212195_at	IL6ST	interleukin 6 signal transducer (gp130, oncostatin M receptor)
212196_at	IL6ST	interleukin 6 signal transducer (gp130, oncostatin M receptor)

212207_at	MED13L	mediator complex subunit 13-like
212208_at	MED13L	mediator complex subunit 13-like
212209_at	MED13L	mediator complex subunit 13-like
212219_at	PSME4	proteasome (prosome, macropain) activator subunit 4
212220_at	PSME4	proteasome (prosome, macropain) activator subunit 4
212242_at	TUBA4A	tubulin, alpha 4a
212247_at	NUP205	nucleoporin 205kDa
212274_at	LPIN1	lipin 1
212276_at	LPIN1	lipin 1
212294_at	GNG12	guanine nucleotide binding protein (G protein), gamma 12
212314_at	KIAA0746	KIAA0746 protein
212360_at	AMPD2	adenosine monophosphate deaminase 2 (isoform L)
212378_at	GART	phosphoribosylglycinamide formyltransferase, phosphoribosylglycinamide synthetase
212403_at	UBE3B	ubiquitin protein ligase E3B
212416_at	SCAMP1	secretory carrier membrane protein 1
212419_at	ZCCHC24	zinc finger, CCHC domain containing 24
212423_at	ZCCHC24	zinc finger, CCHC domain containing 24
212426_s_at	YWHAQ	tyrosine 3-monooxygenase/tryptophan 5-monooxygenase activation protein, theta polypeptide
212430_at	RBM38	RNA binding motif protein 38
212441_at	KIAA0232	KIAA0232
212442_s_at	LASS6	LAG1 homolog, ceramide synthase 6
212462_at	MYST4	MYST histone acetyltransferase (monocytic leukemia) 4
212492_s_at	KDM4B	lysine (K)-specific demethylase 4B
212494_at	TENC1	tensin like C1 domain containing phosphatase (tensin 2)
212495_at	KDM4B	lysine (K)-specific demethylase 4B
212496_s_at	KDM4B	lysine (K)-specific demethylase 4B
212501_at	CEBPB	CCAAT/enhancer binding protein (C/EBP), beta
212508_at	MOAP1	modulator of apoptosis 1
212510_at	GPD1L	glycerol-3-phosphate dehydrogenase 1-like
212527_at	PPPDE2	PPPDE peptidase domain containing 2
212551_at	CAP2	CAP, adenylate cyclase-associated protein, 2 (yeast)
212554_at	CAP2	CAP, adenylate cyclase-associated protein, 2 (yeast)
212638_s_at	WWP1	WW domain containing E3 ubiquitin protein ligase 1

212660_at	PHF15	PHD finger protein 15
212678_at	NF1	neurofibromin 1
212680_x_at	PPP1R14B	protein phosphatase 1, regulatory (inhibitor) subunit 14B
212692_s_at	LRBA	LPS-responsive vesicle trafficking, beach and anchor containing
212697_at	FAM134C	family with sequence similarity 134, member C
212715_s_at	MICAL3	microtubule associated monooxygenase, calponin and LIM domain containing 3
212744_at	BBS4	Bardet-Biedl syndrome 4
212745_s_at	BBS4	Bardet-Biedl syndrome 4
212770_at	TLE3	transducin-like enhancer of split 3 (E(sp1) homolog, Drosophila)
212780_at	SOS1	son of sevenless homolog 1 (Drosophila)
212816_s_at	CBS	cystathionine-beta-synthase
212846_at	RRP1B	ribosomal RNA processing 1 homolog B (S. cerevisiae)
212885_at	MPHOSPH10	M-phase phosphoprotein 10 (U3 small nucleolar ribonucleoprotein)
212908_at	DNAJC16	DnaJ (Hsp40) homolog, subfamily C, member 16
212911_at	DNAJC16	DnaJ (Hsp40) homolog, subfamily C, member 16
212949_at	NCAPH	non-SMC condensin I complex, subunit H
212956_at	TBC1D9	TBC1 domain family, member 9 (with GRAM domain)
212960_at	TBC1D9	TBC1 domain family, member 9 (with GRAM domain)
212970_at	APBB2	amyloid beta (A4) precursor protein-binding, family B, member 2
212978_at	LRRC8B	leucine rich repeat containing 8 family, member B
212995_x_at	FAM128B	family with sequence similarity 128, member B
213007_at	FANCI	Fanconi anemia, complementation group I
213008_at	FANCI	Fanconi anemia, complementation group I
213018_at	GATAD1	GATA zinc finger domain containing 1
213058_at	TTC28	tetratricopeptide repeat domain 28
213063_at	ZC3H14	zinc finger CCCH-type containing 14
213064_at	ZC3H14	zinc finger CCCH-type containing 14
213088_s_at	DNAJC9	DnaJ (Hsp40) homolog, subfamily C, member 9
213097_s_at	DNAJC2	DnaJ (Hsp40) homolog, subfamily C, member 2
213101_s_at	ACTR3	ARP3 actin-related protein 3 homolog (yeast)
213103_at	STARD13	StAR-related lipid transfer (START) domain containing 13
213110_s_at	COL4A5	collagen, type IV, alpha 5
213113_s_at	SLC43A3	solute carrier family 43, member 3

213123_at	MFAP3	microfibrillar-associated protein 3
213134_x_at	BTG3	BTG family, member 3
213136_at	PTPN2	protein tyrosine phosphatase, non-receptor type 2
213137_s_at	PTPN2	protein tyrosine phosphatase, non-receptor type 2
213166_x_at	FAM128A	family with sequence similarity 128, member A
213185_at	KIAA0556	KIAA0556
213226_at	CCNA2	cyclin A2
213234_at	KIAA1467	KIAA1467
213245_at	ADCY1	adenylate cyclase 1 (brain)
213260_at	FOXC1	forkhead box C1
213279_at	DHRS1	dehydrogenase/reductase (SDR family) member 1
213283_s_at	SALL2	sal-like 2 (Drosophila)
213285_at	TMEM30B	transmembrane protein 30B
213304_at	FAM179B	family with sequence similarity 179, member B
213334_x_at	HAUS7	HAUS augmin-like complex, subunit 7
213345_at	NFATC4	nuclear factor of activated T-cells, cytoplasmic, calcineurin-dependent 4
213366_x_at	ATP5C1	ATP synthase, H ⁺ transporting, mitochondrial F1 complex, gamma polypeptide 1
213392_at	IQCK	IQ motif containing K
213397_x_at	RNASE4	ribonuclease, RNase A family, 4
213419_at	APBB2	amyloid beta (A4) precursor protein-binding, family B, member 2
213427_at	RPP40	ribonuclease P/MRP 40kDa subunit
213512_at	C14orf79	chromosome 14 open reading frame 79
213523_at	CCNE1	cyclin E1
213540_at	HSD17B8	hydroxysteroid (17-beta) dehydrogenase 8
213564_x_at	LDHB	lactate dehydrogenase B
213571_s_at	EIF4E2	eukaryotic translation initiation factor 4E family member 2
213599_at	OIP5	Opa interacting protein 5
213627_at	MAGED2	melanoma antigen family D, 2
213639_s_at	ZNF500	zinc finger protein 500
213647_at	DNA2	DNA replication helicase 2 homolog (yeast)
213702_x_at	ASAH1	N-acylsphingosine amidohydrolase (acid ceramidase) 1
213707_s_at	DLX5	distal-less homeobox 5
213712_at	ELOVL2	elongation of very long chain fatty acids (FEN1/Elo2, SUR4/Elo3, yeast)-like 2

213923_at	RAP2B	RAP2B, member of RAS oncogene family
213933_at	PTGER3	prostaglandin E receptor 3 (subtype EP3)
213941_x_at	RPS7	ribosomal protein S7
214049_x_at	CD7	CD7 molecule
214051_at	TMSB15B	thymosin beta 15B
214053_at	ERBB4	v-erb-a erythroblastic leukemia viral oncogene homolog 4 (avian)
214077_x_at	MEIS3P1	Meis homeobox 3 pseudogene 1
214088_s_at	FUT3	fucosyltransferase 3 (galactoside 3(4)-L-fucosyltransferase, Lewis blood group)
214104_at	GPR161	G protein-coupled receptor 161
214106_s_at	GMDS	GDP-mannose 4,6-dehydratase
214109_at	LRBA	LPS-responsive vesicle trafficking, beach and anchor containing
214164_x_at	CA12	carbonic anhydrase XII
214259_s_at	AKR7A2	aldo-keto reductase family 7, member A2 (aflatoxin aldehyde reductase)
214334_x_at	DAZAP2	DAZ associated protein 2
214426_x_at	CHAF1A	chromatin assembly factor 1, subunit A (p150)
214428_x_at	C4A /// C4B	complement component 4A (Rodgers blood group) /// complement component 4B (Chido blood group)
214431_at	GMPS	guanine monphosphate synthetase
214433_s_at	SELENBP1	selenium binding protein 1
214440_at	NAT1	N-acetyltransferase 1 (arylamine N-acetyltransferase)
214552_s_at	RABEP1	rabaptin, RAB GTPase binding effector protein 1
214567_s_at	XCL1 /// XCL2	chemokine (C motif) ligand 1 /// chemokine (C motif) ligand 2
214595_at	KCNG1	potassium voltage-gated channel, subfamily G, member 1
214617_at	PRF1	perforin 1 (pore forming protein)
214705_at	INADL	InaD-like (Drosophila)
214710_s_at	CCNB1	cyclin B1
214735_at	IPCEF1	interaction protein for cytohesin exchange factors 1
214736_s_at	ADD1	adducin 1 (alpha)
214745_at	PLCH1	phospholipase C, eta 1
214838_at	SFT2D2	SFT2 domain containing 2
214855_s_at	GARNL1 ANKHD1-EIF4EBP3 ///	GTPase activating Rap/RanGAP domain-like 1
214919_s_at	EIF4EBP3	ANKHD1-EIF4EBP3 readthrough transcript /// eukaryotic translation initiation factor 4E binding protein 3
214924_s_at	TRAK1	trafficking protein, kinesin binding 1
215001_s_at	GLUL	glutamate-ammonia ligase (glutamine synthetase)

215223_s_at	SOD2	superoxide dismutase 2, mitochondrial
215616_s_at	KDM4B	lysine (K)-specific demethylase 4B
215726_s_at	CYB5A	cytochrome b5 type A (microsomal)
215807_s_at	PLXNB1	plexin B1
215867_x_at	CA12	carbonic anhydrase XII
215942_s_at	GTSE1	G-2 and S-phase expressed 1
215947_s_at	FAM136A	family with sequence similarity 136, member A
215994_x_at	TBC1D9B	TBC1 domain family, member 9B (with GRAM domain)
216010_x_at	FUT3	fucosyltransferase 3 (galactoside 3(4)-L-fucosyltransferase, Lewis blood group)
216092_s_at	SLC7A8	solute carrier family 7 (cationic amino acid transporter, y+ system), member 8
216237_s_at	MCM5	minichromosome maintenance complex component 5
216264_s_at	LAMB2	laminin, beta 2 (laminin S)
216267_s_at	TMEM115	transmembrane protein 115
216300_x_at	RARA	retinoic acid receptor, alpha
216381_x_at	AKR7A3	aldo-keto reductase family 7, member A3 (aflatoxin aldehyde reductase)
216560_x_at	IGL@	immunoglobulin lambda locus
216885_s_at	WDR42A	WD repeat domain 42A
216905_s_at	ST14	suppression of tumorigenicity 14 (colon carcinoma)
216952_s_at	LMNB2	lamin B2
216977_x_at	SNRPA1	small nuclear ribonucleoprotein polypeptide A'
216988_s_at	PTP4A2	protein tyrosine phosphatase type IVA, member 2
217499_x_at	OR7E37P	olfactory receptor, family 7, subfamily E, member 37 pseudogene
217770_at	PIGT	phosphatidylinositol glycan anchor biosynthesis, class T
217794_at	PRR13	proline rich 13
217832_at	SYNCRIP	synaptotagmin binding, cytoplasmic RNA interacting protein
217834_s_at	SYNCRIP	synaptotagmin binding, cytoplasmic RNA interacting protein
217838_s_at	EVL	Enah/Vasp-like
217844_at	CTDSP1	CTD (carboxy-terminal domain, RNA polymerase II, polypeptide A) small phosphatase 1
217870_s_at	CMPK1	cytidine monophosphate (UMP-CMP) kinase 1, cytosolic
217892_s_at	LIMA1	LIM domain and actin binding 1
217894_at	KCTD3	potassium channel tetramerisation domain containing 3
217905_at	C10orf119	chromosome 10 open reading frame 119
217906_at	KLHDC2	kelch domain containing 2

217914_at	TPCN1	two pore segment channel 1
217938_s_at	KCMF1	potassium channel modulatory factor 1
217972_at	CHCHD3	coiled-coil-helix-coiled-coil-helix domain containing 3
217979_at	TSPAN13	tetraspanin 13
217990_at	GMPR2	guanosine monophosphate reductase 2
218002_s_at	CXCL14	chemokine (C-X-C motif) ligand 14
218009_s_at	PRC1	protein regulator of cytokinesis 1
218018_at	PDXK	pyridoxal (pyridoxine, vitamin B6) kinase
218035_s_at	RBM47	RNA binding motif protein 47
218037_at	FAM134A	family with sequence similarity 134, member A
218039_at	NUSAP1	nucleolar and spindle associated protein 1
218051_s_at	NT5DC2	5'-nucleotidase domain containing 2
218065_s_at	TMEM9B	TMEM9 domain family, member B
218086_at	NPDC1	neural proliferation, differentiation and control, 1
218094_s_at	DBNDD2 /// SYS1-DBNDD2	dysbindin (dystrobrevin binding protein 1) domain containing 2 /// SYS1-DBNDD2 readthrough transcript
218104_at	TEX10	testis expressed 10
218131_s_at	GATAD2A	GATA zinc finger domain containing 2A
218146_at	GLT8D1	glycosyltransferase 8 domain containing 1
218193_s_at	GOLT1B	golgi transport 1 homolog B (<i>S. cerevisiae</i>)
218195_at	C6orf211	chromosome 6 open reading frame 211
218211_s_at	MLPH	melanophilin
218223_s_at	PLEKHO1	pleckstrin homology domain containing, family O member 1
218230_at	ARFIP1	ADP-ribosylation factor interacting protein 1
218235_s_at	UTP11L	UTP11-like, U3 small nucleolar ribonucleoprotein, (yeast)
218243_at	RUFY1	RUN and FYVE domain containing 1
218259_at	MKL2	MKL/myocardin-like 2
218262_at	RMND5B	required for meiotic nuclear division 5 homolog B (<i>S. cerevisiae</i>)
218308_at	TACC3	transforming, acidic coiled-coil containing protein 3
218319_at	PELI1	pellino homolog 1 (<i>Drosophila</i>)
218328_at	COQ4	coenzyme Q4 homolog (<i>S. cerevisiae</i>)
218336_at	PFDN2	prefoldin subunit 2
218349_s_at	ZWILCH	Zwilch, kinetochore associated, homolog (<i>Drosophila</i>)
218353_at	RGS5	regulator of G-protein signaling 5

218355_at	KIF4A	kinesin family member 4A
218374_s_at	C12orf4	chromosome 12 open reading frame 4
218394_at	ROGDI	rogdi homolog (Drosophila)
218437_s_at	LZTFL1	leucine zipper transcription factor-like 1
218440_at	MCCC1	methylcrotonoyl-Coenzyme A carboxylase 1 (alpha)
218445_at	H2AFY2	H2A histone family, member Y2
218447_at	C16orf61	chromosome 16 open reading frame 61
218471_s_at	BBS1	Bardet-Biedl syndrome 1
218487_at	ALAD	aminolevulinate, delta-, dehydratase
218496_at	RNASEH1	ribonuclease H1
218497_s_at	RNASEH1	ribonuclease H1
218499_at	RP6-213H19.1	serine/threonine protein kinase MST4
218502_s_at	TRPS1	trichorhinophalangeal syndrome I
218510_x_at	FAM134B	family with sequence similarity 134, member B
218512_at	WDR12	WD repeat domain 12
218532_s_at	FAM134B	family with sequence similarity 134, member B
218537_at	HCFC1R1	host cell factor C1 regulator 1 (XPO1 dependent)
218540_at	THTPA	thiamine triphosphatase
218542_at	CEP55	centrosomal protein 55kDa
218552_at	ECHDC2	enoyl Coenzyme A hydratase domain containing 2
218564_at	RFWD3	ring finger and WD repeat domain 3
218572_at	CHMP4A	chromatin modifying protein 4A
218584_at	TCTN1	tectonic family member 1
218588_s_at	FAM114A2	family with sequence similarity 114, member A2
218593_at	RBM28	RNA binding motif protein 28
218600_at	LIMD2	LIM domain containing 2
218617_at	TRIT1	tRNA isopentenyltransferase 1
218620_s_at	HEMK1	HemK methyltransferase family member 1
218660_at	DYSF	dysferlin, limb girdle muscular dystrophy 2B (autosomal recessive)
218662_s_at	NCAPG	non-SMC condensin I complex, subunit G
218663_at	NCAPG	non-SMC condensin I complex, subunit G
218684_at	LRRC8D	leucine rich repeat containing 8 family, member D
218686_s_at	RHBDF1	rhomboïd 5 homolog 1 (Drosophila)

218692_at	GOLSYN	Golgi-localized protein
218726_at	HJURP	Holliday junction recognition protein
218741_at	CENPM	centromere protein M
218755_at	KIF20A	kinesin family member 20A
218757_s_at	UPF3B	UPF3 regulator of nonsense transcripts homolog B (yeast)
218758_s_at	RRP1	ribosomal RNA processing 1 homolog (<i>S. cerevisiae</i>)
218763_at	STX18	syntaxin 18
218769_s_at	ANKRA2	ankyrin repeat, family A (RFXANK-like), 2
218774_at	DCPS	decapping enzyme, scavenger
218806_s_at	VAV3	vav 3 guanine nucleotide exchange factor
218807_at	VAV3	vav 3 guanine nucleotide exchange factor
218813_s_at	SH3GLB2	SH3-domain GRB2-like endophilin B2
218834_s_at	TMEM132A	transmembrane protein 132A
218856_at	TNFRSF21	tumor necrosis factor receptor superfamily, member 21
218862_at	ASB13	ankyrin repeat and SOCS box-containing 13
218877_s_at	TRMT11	tRNA methyltransferase 11 homolog (<i>S. cerevisiae</i>)
218882_s_at	WDR3	WD repeat domain 3
218886_at	PAK1IP1	PAK1 interacting protein 1
218894_s_at	MAGOHB	mago-nashi homolog B (<i>Drosophila</i>)
218921_at	SIGIRR	single immunoglobulin and toll-interleukin 1 receptor (TIR) domain
218931_at	RAB17	RAB17, member RAS oncogene family
218949_s_at	QRSL1	glutaminyl-tRNA synthase (glutamine-hydrolyzing)-like 1
218966_at	MYO5C	myosin VC
218976_at	DNAJC12	DnaJ (Hsp40) homolog, subfamily C, member 12
218987_at	ATF7IP	activating transcription factor 7 interacting protein
219000_s_at	DSCC1	defective in sister chromatid cohesion 1 homolog (<i>S. cerevisiae</i>)
219001_s_at	WDR32	WD repeat domain 32
219004_s_at	C21orf45	chromosome 21 open reading frame 45
219006_at	NDUFAF4	NADH dehydrogenase (ubiquinone) 1 alpha subcomplex, assembly factor 4
219010_at	C1orf106	chromosome 1 open reading frame 106
219051_x_at	METRN	meteorin, glial cell differentiation regulator
219065_s_at	MEMO1	mediator of cell motility 1
219083_at	SHQ1	SHQ1 homolog (<i>S. cerevisiae</i>)

219087_at	ASPN	asporin
219105_x_at	ORC6L	origin recognition complex, subunit 6 like (yeast)
219114_at	C3orf18	chromosome 3 open reading frame 18
219143_s_at	RPP25	ribonuclease P/MRP 25kDa subunit
219153_s_at	THSD4	thrombospondin, type I, domain containing 4
219197_s_at	SCUBE2	signal peptide, CUB domain, EGF-like 2
219202_at	RHBDF2	rhomoid 5 homolog 2 (Drosophila)
219206_x_at	TMBIM4	transmembrane BAX inhibitor motif containing 4
219209_at	IFIH1	interferon induced with helicase C domain 1
219222_at	RBKS	ribokinase
219241_x_at	SSH3	slingshot homolog 3 (Drosophila)
219286_s_at	RBM15	RNA binding motif protein 15
219306_at	KIF15	kinesin family member 15
219317_at	POLI	polymerase (DNA directed) iota
219385_at	SLAMF8	SLAM family member 8
219386_s_at	SLAMF8	SLAM family member 8
219414_at	CLSTN2	calsyntenin 2
219438_at	NKAIN1	Na ⁺ /K ⁺ transporting ATPase interacting 1
219439_at	C1GALT1	core 1 synthase, glycoprotein-N-acetylgalactosamine 3-beta-galactosyltransferase, 1
219440_at	RAI2	retinoic acid induced 2
219453_at	KLHL36	kelch-like 36 (Drosophila)
219454_at	EGFL6	EGF-like-domain, multiple 6
219455_at	C7orf63	chromosome 7 open reading frame 63
219463_at	C20orf103	chromosome 20 open reading frame 103
219469_at	DYNC2H1	dynein, cytoplasmic 2, heavy chain 1
219470_x_at	CCNJ	cyclin J
219497_s_at	BCL11A	B-cell CLL/lymphoma 11A (zinc finger protein)
219498_s_at	BCL11A	B-cell CLL/lymphoma 11A (zinc finger protein)
219542_at	NEK11	NIMA (never in mitosis gene a)- related kinase 11
219544_at	C13orf34	chromosome 13 open reading frame 34
219555_s_at	CENPN	centromere protein N
219570_at	KIF16B	kinesin family member 16B
219588_s_at	NCAPG2	non-SMC condensin II complex, subunit G2

219609_at	WDR25	WD repeat domain 25
219615_s_at	KCNK5	potassium channel, subfamily K, member 5
219634_at	CHST11	carbohydrate (chondroitin 4) sulfotransferase 11
219646_at	DEF8	differentially expressed in FDCP 8 homolog (mouse)
219648_at	MREG	melanoregulin
219682_s_at	TBX3	T-box 3
219686_at	STK32B	serine/threonine kinase 32B
219687_at	HHAT	hedgehog acyltransferase
219753_at	STAG3	stromal antigen 3
219786_at	MTL5	metallothionein-like 5, testis-specific (tesmin)
219787_s_at	ECT2	epithelial cell transforming sequence 2 oncogene
219806_s_at	C11orf75	chromosome 11 open reading frame 75
219833_s_at	EFHC1	EF-hand domain (C-terminal) containing 1
219862_s_at	NARF	nuclear prelamin A recognition factor
219882_at	TLL7	tubulin tyrosine ligase-like family, member 7
219918_s_at	ASPM	asp (abnormal spindle) homolog, microcephaly associated (Drosophila)
219919_s_at	SSH3	slingshot homolog 3 (Drosophila)
219922_s_at	LTBP3	latent transforming growth factor beta binding protein 3
219956_at	GALNT6	UDP-N-acetyl-alpha-D-galactosamine:polypeptide N-acetylgalactosaminyltransferase 6 (GalNAc-T6)
219978_s_at	NUSAP1	nucleolar and spindle associated protein 1
219981_x_at	ZNF587	zinc finger protein 587
220094_s_at	CCDC90A	coiled-coil domain containing 90A
220134_x_at	FAM176B	family with sequence similarity 176, member B
220147_s_at	FAM60A	family with sequence similarity 60, member A
220173_at	C14orf45	chromosome 14 open reading frame 45
220192_x_at	SPDEF	SAM pointed domain containing ets transcription factor
220239_at	KLHL7	kelch-like 7 (Drosophila)
220255_at	FANCE	Fanconi anemia, complementation group E
220260_at	TBC1D19	TBC1 domain family, member 19
220559_at	EN1	engrailed homeobox 1
220581_at	C6orf97	chromosome 6 open reading frame 97
220613_s_at	SYTL2	synaptotagmin-like 2
220624_s_at	ELF5	E74-like factor 5 (ets domain transcription factor)

220625_s_at	ELF5	E74-like factor 5 (ets domain transcription factor)
220651_s_at	MCM10	minichromosome maintenance complex component 10
220658_s_at	ARNTL2	aryl hydrocarbon receptor nuclear translocator-like 2
220744_s_at	IFT122	intraflagellar transport 122 homolog (Chlamydomonas)
220865_s_at	PDSS1	prenyl (decaprenyl) diphosphate synthase, subunit 1
220892_s_at	PSAT1	phosphoserine aminotransferase 1
220917_s_at	WDR19	WD repeat domain 19
220956_s_at	EGLN2	egl nine homolog 2 (C. elegans)
221012_s_at	TRIM8	tripartite motif-containing 8
221046_s_at	GTPBP8	GTP-binding protein 8 (putative)
221059_s_at	COTL1	coactosin-like 1 (Dictyostelium)
221139_s_at	CSAD	cysteine sulfinic acid decarboxylase
221203_s_at	YEATS2	YEATS domain containing 2
221215_s_at	RIPK4	receptor-interacting serine-threonine kinase 4
221223_x_at	CISH	cytokine inducible SH2-containing protein
221253_s_at	TXNDC5	thioredoxin domain containing 5 (endoplasmic reticulum)
221272_s_at	C1orf21	chromosome 1 open reading frame 21
221276_s_at	SYNC	syncoilin, intermediate filament protein
221277_s_at	PUS3	pseudouridylate synthase 3
221436_s_at	CDCA3	cell division cycle associated 3
221472_at	SERINC3	serine incorporator 3
221477_s_at	SOD2	superoxide dismutase 2, mitochondrial
221505_at	ANP32E	acidic (leucine-rich) nuclear phosphoprotein 32 family, member E
221510_s_at	GLS	glutaminase
221516_s_at	SMCR7L	Smith-Magenis syndrome chromosome region, candidate 7-like
221520_s_at	CDCA8	cell division cycle associated 8
221523_s_at	RRAGD	Ras-related GTP binding D
221524_s_at	RRAGD	Ras-related GTP binding D
221562_s_at	SIRT3	sirtuin (silent mating type information regulation 2 homolog) 3 (S. cerevisiae)
221580_s_at	TAF1D	TATA box binding protein (TBP)-associated factor, RNA polymerase I, D, 41kDa
221591_s_at	FAM64A	family with sequence similarity 64, member A similar to cofactor required for Sp1 transcriptional activation, subunit 8, 34kDa /// mediator complex subunit 27
221598_s_at	LOC100131612 /// MED27	27
221614_s_at	RPH3AL	rabphilin 3A-like (without C2 domains)

221641_s_at	ACOT9	acyl-CoA thioesterase 9
221652_s_at	C12orf11	chromosome 12 open reading frame 11
221677_s_at	DONSON	downstream neighbor of SON
221698_s_at	CLEC7A	C-type lectin domain family 7, member A
221710_x_at	FAM176B /// LOC100133999	family with sequence similarity 176, member B /// hypothetical protein LOC100133999
221750_at	HMGCS1	3-hydroxy-3-methylglutaryl-Coenzyme A synthase 1 (soluble)
221759_at	G6PC3	glucose 6 phosphatase, catalytic, 3
221779_at	MICALL1	MICAL-like 1
221823_at	C5orf30	chromosome 5 open reading frame 30
221830_at	RAP2A	RAP2A, member of RAS oncogene family
221842_s_at	ZNF131	zinc finger protein 131
221854_at	PKP1	plakophilin 1 (ectodermal dysplasia/skin fragility syndrome)
221856_s_at	FAM63A	family with sequence similarity 63, member A
221864_at	ORAI3	ORAI calcium release-activated calcium modulator 3
221872_at	RARRES1	retinoic acid receptor responder (tazarotene induced) 1
221913_at	SIRT3	sirtuin (silent mating type information regulation 2 homolog) 3 (<i>S. cerevisiae</i>)
221922_at	GPSM2	G-protein signaling modulator 2 (AGS3-like, <i>C. elegans</i>)
221934_s_at	DALRD3 /// LOC100133719	DALR anticodon binding domain containing 3 /// similar to DALR anticodon binding domain containing 3
221946_at	C9orf116	chromosome 9 open reading frame 116
221959_at	FAM110B	family with sequence similarity 110, member B
221985_at	KLHL24	kelch-like 24 (<i>Drosophila</i>)
222010_at	TCP1	t-complex 1
222039_at	KIF18B	kinesin family member 18B
222125_s_at	P4HTM	prolyl 4-hydroxylase, transmembrane (endoplasmic reticulum)
222201_s_at	CASP8AP2	caspace 8 associated protein 2
222212_s_at	LASS2	LAG1 homolog, ceramide synthase 2
222257_s_at	ACE2	angiotensin I converting enzyme (peptidyl-dipeptidase A) 2
222327_x_at	OR7E156P	olfactory receptor, family 7, subfamily E, member 156 pseudogene
222379_at	KCNE4	potassium voltage-gated channel, Isk-related family, member 4
31846_at	RHOD	ras homolog gene family, member D
35666_at	SEMA3F	sema domain, immunoglobulin domain (Ig), short basic domain, secreted, (semaphorin) 3F
36499_at	CELSR2	cadherin, EGF LAG seven-pass G-type receptor 2 (flamingo homolog, <i>Drosophila</i>)
37145_at	GNLY	granulysin

37950_at	PREP	prolyl endopeptidase
40016_g_at	MAST4	microtubule associated serine/threonine kinase family member 4
40093_at	BCAM	basal cell adhesion molecule (Lutheran blood group)
40148_at	APBB2	amyloid beta (A4) precursor protein-binding, family B, member 2
41037_at	TEAD4	TEA domain family member 4
41113_at	ZNF500	zinc finger protein 500
41660_at	CELSR1	cadherin, EGF LAG seven-pass G-type receptor 1 (flamingo homolog, Drosophila)
44654_at	G6PC3	glucose 6 phosphatase, catalytic, 3
49306_at	RASSF4	Ras association (RalGDS/AF-6) domain family member 4
51192_at	SSH3	slingshot homolog 3 (Drosophila)
52159_at	HEMK1	HemK methyltransferase family member 1
52940_at	SIGIRR	single immunoglobulin and toll-interleukin 1 receptor (TIR) domain
55081_at	MICALL1	MICAL-like 1
57540_at	RBKS	ribokinase
59437_at	C9orf116	chromosome 9 open reading frame 116
60471_at	RIN3	Ras and Rab interactor 3
63009_at	SHQ1	SHQ1 homolog (S. cerevisiae)
200054_at	ZNF259	zinc finger protein 259
200067_x_at	SNX3	sorting nexin 3
203625_x_at	SKP2	S-phase kinase-associated protein 2 (p45)
206538_at	MRAS	muscle RAS oncogene homolog
208617_s_at	PTP4A2	protein tyrosine phosphatase type IVA, member 2
209640_at	PML	promyelocytic leukemia
210469_at	DLG5	discs, large homolog 5 (Drosophila)
212256_at	GALNT10	UDP-N-acetyl-alpha-D-galactosamine:polypeptide N-acetylgalactosaminyltransferase 10 (GalNAc-T10)
212907_at	SLC30A1	Solute carrier family 30 (zinc transporter), member 1
212985_at	APBB2	amyloid beta (A4) precursor protein-binding, family B, member 2
213179_at	RQCD1	RCD1 required for cell differentiation1 homolog (S. pombe)
213266_at	TUBGCP4	Tubulin, gamma complex associated protein 4
213545_x_at	SNX3	sorting nexin 3
214657_s_at	NCRNA00084	non-protein coding RNA 84
215304_at	---	---
216604_s_at	SLC7A8	solute carrier family 7 (cationic amino acid transporter, y+ system), member 8

217329_x_at	---	---
219177_at	BXDC2	brix domain containing 2
220540_at	KCNK15	potassium channel, subfamily K, member 15
222036_s_at	MCM4	minichromosome maintenance complex component 4
222037_at	MCM4	minichromosome maintenance complex component 4
222129_at	FAM134A	family with sequence similarity 134, member A

GSE1456 Recurrence Predictor Gene List

Probe Set ID	Gene Symbol	Gene Title
1053_at	RFC2	replication factor C (activator 1) 2, 40kDa
1729_at	TRADD	TNFRSF1A-associated via death domain
200737_at	PGK1	phosphoglycerate kinase 1
200738_s_at	PGK1	phosphoglycerate kinase 1
200795_at	SPARCL1	SPARC-like 1 (hevin)
200812_at	CCT7	chaperonin containing TCP1, subunit 7 (eta)
200853_at	H2AFZ	H2A histone family, member Z
200910_at	CCT3	chaperonin containing TCP1, subunit 3 (gamma)
200942_s_at	HSBP1	heat shock factor binding protein 1
200980_s_at	PDHA1	pyruvate dehydrogenase (lipoamide) alpha 1
201000_at	AARS	alanyl-tRNA synthetase
201037_at	PFKP	phosphofructokinase, platelet
201463_s_at	LOC100133665 /// TALDO1	similar to transaldolase /// transaldolase 1
201467_s_at	NQO1	NAD(P)H dehydrogenase, quinone 1
201475_x_at	MARS	methionyl-tRNA synthetase
201491_at	AHSA1	AHA1, activator of heat shock 90kDa protein ATPase homolog 1 (yeast)
201494_at	PRCP	prolylcarboxypeptidase (angiotensinase C)
201581_at	TMX4	thioredoxin-related transmembrane protein 4
201584_s_at	DDX39	DEAD (Asp-Glu-Ala-Asp) box polypeptide 39
201590_x_at	ANXA2	annexin A2
201648_at	JAK1	Janus kinase 1
201778_s_at	KIAA0494	KIAA0494
201790_s_at	DHCR7	7-dehydrocholesterol reductase
201791_s_at	DHCR7	7-dehydrocholesterol reductase
201821_s_at	TIMM17A	translocase of inner mitochondrial membrane 17 homolog A (yeast)
201898_s_at	UBE2A	ubiquitin-conjugating enzyme E2A (RAD6 homolog)
201924_at	AFF1	AF4/FMR2 family, member 1
201959_s_at	MYCBP2	MYC binding protein 2

201960_s_at	MYCBP2	MYC binding protein 2
201989_s_at	CREBL2	cAMP responsive element binding protein-like 2
202058_s_at	KPNA1	karyopherin alpha 1 (importin alpha 5)
202154_x_at	TUBB3	tubulin, beta 3
202188_at	NUP93	nucleoporin 93kDa
202432_at	PPP3CB	protein phosphatase 3 (formerly 2B), catalytic subunit, beta isoform
202533_s_at	DHFR	dihydrofolate reductase
202551_s_at	CRIM1	cysteine rich transmembrane BMP regulator 1 (chordin-like)
202552_s_at	CRIM1	cysteine rich transmembrane BMP regulator 1 (chordin-like)
202561_at	TNKS	tankyrase, TRF1-interacting ankyrin-related ADP-ribose polymerase
202570_s_at	DLGAP4	discs, large (Drosophila) homolog-associated protein 4
202671_s_at	PDXK	pyridoxal (pyridoxine, vitamin B6) kinase
202697_at	NUDT21	nudix (nucleoside diphosphate linked moiety X)-type motif 21
202705_at	CCNB2	cyclin B2
202712_s_at	CKMT1A /// CKMT1B	creatine kinase, mitochondrial 1A /// creatine kinase, mitochondrial 1B
202721_s_at	GFPT1	glutamine-fructose-6-phosphate transaminase 1
202771_at	FAM38A	family with sequence similarity 38, member A
202779_s_at	LOC731049 /// UBE2S	similar to Ubiquitin-conjugating enzyme E2S
203027_s_at	MVD	mevalonate (diphospho) decarboxylase
203339_at	SLC25A12	solute carrier family 25 (mitochondrial carrier, Aralar), member 12
203350_at	AP1G1	adaptor-related protein complex 1, gamma 1 subunit
203365_s_at	MMP15	matrix metalloproteinase 15 (membrane-inserted)
203418_at	CCNA2	cyclin A2
203420_at	FAM8A1	family with sequence similarity 8, member A1
203612_at	BYSL	bystin-like
203633_at	CPT1A	carnitine palmitoyltransferase 1A (liver)
203634_s_at	CPT1A	carnitine palmitoyltransferase 1A (liver)
203685_at	BCL2	B-cell CLL/lymphoma 2
203697_at	FRZB	frizzled-related protein
203755_at	BUB1B	budding uninhibited by benzimidazoles 1 homolog beta (yeast)
203764_at	DLGAP5	discs, large (Drosophila) homolog-associated protein 5
203799_at	CD302	CD302 molecule
204106_at	TESK1	testis-specific kinase 1

204281_at	TEAD4	TEA domain family member 4
204565_at	ACOT13	acyl-CoA thioesterase 13
204603_at	EXO1	exonuclease 1
204793_at	GPRASP1	G protein-coupled receptor associated sorting protein 1
204825_at	MELK	maternal embryonic leucine zipper kinase
205024_s_at	RAD51	RAD51 homolog (RecA homolog, E. coli) (S. cerevisiae)
205219_s_at	GALK2	galactokinase 2
205224_at	SURF2	surfeit 2
205246_at	PEX13	peroxisomal biogenesis factor 13
205383_s_at	ZBTB20	zinc finger and BTB domain containing 20
205661_s_at	FLAD1	FAD1 flavin adenine dinucleotide synthetase homolog (S. cerevisiae)
205933_at	SETBP1	SET binding protein 1
206199_at	CEACAM7	carcinoembryonic antigen-related cell adhesion molecule 7
206240_s_at	ZNF136	zinc finger protein 136
206482_at	PTK6	PTK6 protein tyrosine kinase 6
206542_s_at	SMARCA2	SWI/SNF related, matrix associated, actin dependent regulator of chromatin, subfamily a, member 2
206555_s_at	THUMPD1	THUMP domain containing 1
206949_s_at	RUSC1	RUN and SH3 domain containing 1
207525_s_at	GIPC1	GIPC PDZ domain containing family, member 1
207833_s_at	HLCS	holocarboxylase synthetase (biotin-(propionyl-Coenzyme A-carboxylase (ATP-hydrolysing)) ligase)
207933_at	ZP2	zona pellucida glycoprotein 2 (sperm receptor)
208084_at	ITGB6	integrin, beta 6
208634_s_at	MACF1	microtubule-actin crosslinking factor 1
208785_s_at	MAP1LC3B	microtubule-associated protein 1 light chain 3 beta
208799_at	PSMB5	proteasome (prosome, macropain) subunit, beta type, 5
208816_x_at	ANXA2P2	annexin A2 pseudogene 2
208968_s_at	CIAPIN1	cytokine induced apoptosis inhibitor 1
208977_x_at	TUBB2C	tubulin, beta 2C
209071_s_at	RGS5	regulator of G-protein signaling 5
209103_s_at	UFD1L	ubiquitin fusion degradation 1 like (yeast)
209199_s_at	MEF2C	myocyte enhancer factor 2C
209218_at	SQLE	squalene epoxidase
209260_at	SFN	stratifin

209285_s_at	C3orf63	chromosome 3 open reading frame 63
209336_at	PWP2	PWP2 periodic tryptophan protein homolog (yeast)
209642_at	BUB1	budding uninhibited by benzimidazoles 1 homolog (yeast)
209714_s_at	CDKN3	cyclin-dependent kinase inhibitor 3
209773_s_at	RRM2	ribonucleotide reductase M2 polypeptide
209825_s_at	UCK2	uridine-cytidine kinase 2
209832_s_at	CDT1	chromatin licensing and DNA replication factor 1
210235_s_at	PPF1A1	protein tyrosine phosphatase, receptor type, f polypeptide (PTPRF), interacting protein (liprin), alpha 1
210427_x_at	ANXA2	annexin A2
210627_s_at	MOGS	mannosyl-oligosaccharide glucosidase
210688_s_at	CPT1A	carnitine palmitoyltransferase 1A (liver)
210761_s_at	GRB7	growth factor receptor-bound protein 7
210959_s_at	SRD5A1	steroid-5-alpha-reductase, alpha polypeptide 1 (3-oxo-5 alpha-steroid delta 4-dehydrogenase alpha 1)
211080_s_at	NEK2	NIMA (never in mitosis gene a)-related kinase 2
211506_s_at	IL8	interleukin 8
211968_s_at	HSP90AA1	heat shock protein 90kDa alpha (cytosolic), class A member 1
212070_at	GPR56	G protein-coupled receptor 56
212141_at	MCM4	minichromosome maintenance complex component 4
212188_at	KCTD12	potassium channel tetramerisation domain containing 12
212189_s_at	COG4	component of oligomeric golgi complex 4
212205_at	H2AFV	H2A histone family, member V
212289_at	ANKRD12	ankyrin repeat domain 12
212498_at	---	---
212549_at	STAT5B	signal transducer and activator of transcription 5B
212581_x_at	GAPDH	glyceraldehyde-3-phosphate dehydrogenase
212660_at	PHF15	PHD finger protein 15
212675_s_at	CEP68	centrosomal protein 68kDa
212914_at	CBX7	chromobox homolog 7
212936_at	FAM172A	family with sequence similarity 172, member A
212982_at	ZDHHC17	zinc finger, DHHC-type containing 17
212983_at	HRAS	v-Ha-ras Harvey rat sarcoma viral oncogene homolog
213016_at	BBX	bobby sox homolog (Drosophila)
213034_at	KIAA0999	KIAA0999 protein

213058_at	TTC28	tetratricopeptide repeat domain 28
213156_at	---	---
213158_at	---	---
213375_s_at	N4BP2L1	NEDD4 binding protein 2-like 1
213453_x_at	GAPDH	glyceraldehyde-3-phosphate dehydrogenase
213476_x_at	TUBB3	tubulin, beta 3
213503_x_at	ANXA2	annexin A2
213562_s_at	SQLE	squalene epoxidase
213694_at	RSBN1	round spermatid basic protein 1
213721_at	SOX2	SRY (sex determining region Y)-box 2
213726_x_at	TUBB2C	tubulin, beta 2C
213796_at	SPRR1A	small proline-rich protein 1A
213911_s_at	H2AFZ	H2A histone family, member Z
214074_s_at	CTTN	cortactin
214118_x_at	PCM1	pericentriolar material 1
214444_s_at	PVR	poliovirus receptor
214686_at	ZNF266	zinc finger protein 266
214710_s_at	CCNB1	cyclin B1
215171_s_at	TIMM17A	translocase of inner mitochondrial membrane 17 homolog A (yeast)
216977_x_at	SNRPA1	small nuclear ribonucleoprotein polypeptide A'
217356_s_at	PGK1	phosphoglycerate kinase 1
217398_x_at	GAPDH	glyceraldehyde-3-phosphate dehydrogenase
217562_at	FAM5C	family with sequence similarity 5, member C
217707_x_at	SMARCA2	SWI/SNF related, matrix associated, actin dependent regulator of chromatin, subfamily a, member 2
217733_s_at	TMSB10	thymosin beta 10
217755_at	HN1	hematological and neurological expressed 1
217772_s_at	MTCH2	mitochondrial carrier homolog 2 (C. elegans)
217957_at	C16orf80	chromosome 16 open reading frame 80
218039_at	NUSAP1	nucleolar and spindle associated protein 1
218057_x_at	COX4NB	COX4 neighbor
218074_at	FAM96B	family with sequence similarity 96, member B
218125_s_at	CCDC25	coiled-coil domain containing 25
218149_s_at	ZNF395	zinc finger protein 395

218259_at	MKL2	MKL/myocardin-like 2
218282_at	EDEM2	ER degradation enhancer, mannosidase alpha-like 2
218290_at	PLEKHJ1	pleckstrin homology domain containing, family J member 1
218336_at	PFDN2	prefoldin subunit 2
218353_at	RGS5	regulator of G-protein signaling 5
218497_s_at	RNASEH1	ribonuclease H1
218498_s_at	ERO1L	ERO1-like (<i>S. cerevisiae</i>)
218518_at	FAM13B	family with sequence similarity 13, member B
218614_at	C12orf35	chromosome 12 open reading frame 35
218662_s_at	NCAPG	non-SMC condensin I complex, subunit G
218663_at	NCAPG	non-SMC condensin I complex, subunit G
218739_at	ABHD5	abhydrolase domain containing 5
218755_at	KIF20A	kinesin family member 20A
218834_s_at	TMEM132A	transmembrane protein 132A
218990_s_at	SPRR3	small proline-rich protein 3
218996_at	TFPT	TCF3 (E2A) fusion partner (in childhood Leukemia)
219063_at	C1orf35	chromosome 1 open reading frame 35
219143_s_at	RPP25	ribonuclease P/MRP 25kDa subunit
219203_at	FAM158A	family with sequence similarity 158, member A
219270_at	CHAC1	ChaC, cation transport regulator homolog 1 (<i>E. coli</i>)
219289_at	HEATR3	HEAT repeat containing 3
219395_at	ESRP2	epithelial splicing regulatory protein 2
219429_at	FA2H	fatty acid 2-hydroxylase
219517_at	ELL3	elongation factor RNA polymerase II-like 3
219575_s_at	COG8 /// PDF	component of oligomeric golgi complex 8 /// peptide deformylase (mitochondrial)
219646_at	DEF8	differentially expressed in FDCP 8 homolog (mouse)
219841_at	AICDA	activation-induced cytidine deaminase
220200_s_at	SETD8	SET domain containing (lysine methyltransferase) 8
220289_s_at	AIM1L	absent in melanoma 1-like
220751_s_at	C5orf4	chromosome 5 open reading frame 4
221249_s_at	FAM117A	family with sequence similarity 117, member A
221291_at	ULBP2	UL16 binding protein 2
221364_at	GRID2	glutamate receptor, ionotropic, delta 2

221539_at	EIF4EBP1	eukaryotic translation initiation factor 4E binding protein 1
221566_s_at	NOL3	nucleolar protein 3 (apoptosis repressor with CARD domain)
221572_s_at	CELSR3 /// SLC26A6	cadherin, EGF LAG seven-pass G-type receptor 3 (flamingo homolog, Drosophila) /// solute carrier family 26),member 6
221597_s_at	TMEM208	transmembrane protein 208
221824_s_at	MARCH8	membrane-associated ring finger (C3HC4) 8
221937_at	---	---
222129_at	FAM134A	family with sequence similarity 134, member A
222216_s_at	MRPL17	mitochondrial ribosomal protein L17
222234_s_at	DBNDD1	dysbindin (dystrobrevin binding protein 1) domain containing 1
222368_at	---	---
41037_at	TEAD4	TEA domain family member 4
49077_at	PPME1	protein phosphatase methylesterase 1

Adriamycin Chemosensitivity Signature Gene List

Probe Set ID	Gene Symbol	Gene Title
209008_x_at	KRT8	keratin 8
201089_at	ATP6V1B2	ATPase, H ⁺ transporting, lysosomal 56/58kDa, V1 subunit B2
209873_s_at	PKP3	plakophilin 3
210715_s_at	SPINT2	serine peptidase inhibitor, Kunitz type, 2
215254_at	RCAN1	regulator of calcineurin 1
216074_x_at	WWC1	WW and C2 domain containing 1
221601_s_at	FAIM3	Fas apoptotic inhibitory molecule 3
203541_s_at	KLF9	Kruppel-like factor 9
200606_at	DSP	desmoplakin
202947_s_at	GYPC	glycophorin C (Gerbich blood group)
214492_at	SGCD	sarcoglycan, delta (35kDa dystrophin-associated glycoprotein)
205168_at	DDR2	discoidin domain receptor tyrosine kinase 2
209212_s_at	KLF5	Kruppel-like factor 5 (intestinal)
200752_s_at	CAPN1	calpain 1, (mu/l) large subunit
210198_s_at	PLP1	proteolipid protein 1
201141_at	GPNMB	glycoprotein (transmembrane) nmb
266_s_at	CD24	CD24 molecule
201596_x_at	KRT18	keratin 18
202185_at	PLOD3	procollagen-lysine, 2-oxoglutarate 5-dioxygenase 3
210150_s_at	LAMA5	laminin, alpha 5
201079_at	SYNGR2	synaptogyrin 2
203028_s_at	CYBA	cytochrome b-245, alpha polypeptide
206584_at	LY96	lymphocyte antigen 96
205973_at	FEZ1	fasciculation and elongation protein zeta 1 (zygin I)
201983_s_at	EGFR	epidermal growth factor receptor (erythroblastic leukemia viral (v-erb-b) oncogene homolog, avian)
212915_at	PDZRN3	PDZ domain containing ring finger 3
207517_at	LAMC2	laminin, gamma 2
214297_at	CSPG4	chondroitin sulfate proteoglycan 4

200871_s_at	PSAP	prosaposin
201839_s_at	EPCAM	epithelial cell adhesion molecule
210139_s_at	PMP22	peripheral myelin protein 22
203585_at	ZNF185	zinc finger protein 185 (LIM domain)
203315_at	NCK2	NCK adaptor protein 2
212925_at	C19orf21	chromosome 19 open reading frame 21
217234_s_at	EZR	ezrin
209016_s_at	KRT7	keratin 7
213466_at	RAB40C	RAB40C, member RAS oncogene family
214845_s_at	CALU	calumenin
201004_at	SSR4	signal sequence receptor, delta (translocon-associated protein delta)
209236_at	SLC23A2	solute carrier family 23 (nucleobase transporters), member 2
208682_s_at	MAGED2	melanoma antigen family D, 2
203094_at	MAD2L1BP	MAD2L1 binding protein
202260_s_at	STXBP1	syntaxin binding protein 1
207732_s_at	DLG3	discs, large homolog 3 (Drosophila)
214040_s_at	GSN	gelsolin (amyloidosis, Finnish type)
203826_s_at	PITPNM1	phosphatidylinositol transfer protein, membrane-associated 1
206427_s_at	MLANA	melan-A
41644_at	SASH1	SAM and SH3 domain containing 1
204457_s_at	GAS1	growth arrest-specific 1
208937_s_at	ID1	inhibitor of DNA binding 1, dominant negative helix-loop-helix protein
212419_at	ZCCHC24	zinc finger, CCHC domain containing 24
204040_at	RNF144A	ring finger protein 144A
203391_at	FKBP2	FK506 binding protein 2, 13kDa
204679_at	KCNK1	potassium channel, subfamily K, member 1
214632_at	NRP2	neuropilin 2
207233_s_at	MITF	microphthalmia-associated transcription factor
212531_at	LCN2	lipocalin 2
203979_at	CYP27A1	cytochrome P450, family 27, subfamily A, polypeptide 1
211066_x_at	PCDHGC3	protocadherin gamma subfamily C, 3
206560_s_at	MIA	melanoma inhibitory activity
213355_at	ST3GAL6	ST3 beta-galactoside alpha-2,3-sialyltransferase 6

205780_at	BIK	BCL2-interacting killer (apoptosis-inducing)
200958_s_at	SDCBP	syndecan binding protein (syntenin)
203713_s_at	LLGL2	lethal giant larvae homolog 2 (Drosophila)
208614_s_at	FLNB	filamin B, beta (actin binding protein 278)
203954_x_at	CLDN3	claudin 3
203556_at	ZHX2	zinc fingers and homeoboxes 2
202016_at	MEST	mesoderm specific transcript homolog (mouse)
213843_x_at	SLC6A8	solute carrier family 6 (neurotransmitter transporter, creatine), member 8
201178_at	FBXO7	F-box protein 7
201578_at	PODXL	podocalyxin-like
209306_s_at	SWAP70	SWAP-70 protein
209170_s_at	GPM6B	glycoprotein M6B
210130_s_at	TM7SF2	transmembrane 7 superfamily member 2
214154_s_at	PKP2	plakophilin 2
203603_s_at	ZEB2	zinc finger E-box binding homeobox 2
206234_s_at	MMP17	matrix metalloproteinase 17 (membrane-inserted)
204867_at	GCHFR	GTP cyclohydrolase I feedback regulator
201015_s_at	JUP	junction plakoglobin
208626_s_at	VAT1	vesicle amine transport protein 1 homolog (T. californica)

Docetaxel Chemosensitivity Signature Gene List

Probe Set ID	Gene Symbol	Gene Title
200912_s_at	EIF4A2	eukaryotic translation initiation factor 4A, isoform 2
208827_at	PSMB6	proteasome (prosome, macropain) subunit, beta type, 6
212082_s_at	MYL6	myosin, light chain 6, alkali, smooth muscle and non-muscle
210125_s_at	BANF1	barrier to autointegration factor 1
213444_at	ZNF862	zinc finger protein 862
213111_at	PIP5K3	phosphatidylinositol-3-phosphate/phosphatidylinositol 5-kinase, type III
214900_at	ZKSCAN1	zinc finger with KRAB and SCAN domains 1
210023_s_at	PCGF1	polycomb group ring finger 1
200695_at	PPP2R1A	protein phosphatase 2 (formerly 2A), regulatory subunit A, alpha isoform
203522_at	CCS	copper chaperone for superoxide dismutase
204608_at	ASL	argininosuccinate lyase
213949_s_at	DOHH	deoxyhypusine hydroxylase/monooxygenase
202991_at	STARD3	StAR-related lipid transfer (START) domain containing 3
217500_at	TIAL1	TIA1 cytotoxic granule-associated RNA binding protein-like 1
200033_at	DDX5	DEAD (Asp-Glu-Ala-Asp) box polypeptide 5
203117_s_at	PAN2	PAN2 poly(A) specific ribonuclease subunit homolog (S. cerevisiae)
220946_s_at	SETD2	SET domain containing 2
201917_s_at	SLC25A36	solute carrier family 25, member 36
208686_s_at	BRD2	bromodomain containing 2
214993_at	ASPHD1	aspartate beta-hydroxylase domain containing 1
201238_s_at	CAPZA2	capping protein (actin filament) muscle Z-line, alpha 2
218018_at	PDXK	pyridoxal (pyridoxine, vitamin B6) kinase
216940_x_at	YBX1	Y box binding protein 1
203220_s_at	TLE1	transducin-like enhancer of split 1 (E(sp1) homolog, Drosophila)
200852_x_at	GNB2	guanine nucleotide binding protein (G protein), beta polypeptide 2
208373_s_at	P2RY6	pyrimidinergic receptor P2Y, G-protein coupled, 6
217910_x_at	MLX	MAX-like protein X
212608_s_at	NA	NA

206233_at	B4GALT6	UDP-Gal:betaGlcNAc beta 1,4- galactosyltransferase, polypeptide 6
213287_s_at	KRT10	keratin 10
203006_at	INPP5A	inositol polyphosphate-5-phosphatase, 40kDa
216022_at	NA	NA
207809_s_at	ATP6AP1	ATPase, H ⁺ transporting, lysosomal accessory protein 1
206894_at	APOA4	apolipoprotein A-IV
209008_x_at	KRT8	keratin 8
213704_at	RABGGTB	Rab geranylgeranyltransferase, beta subunit
213104_at	C16orf42	chromosome 16 open reading frame 42
203314_at	GTPBP6	GTP binding protein 6 (putative)
203667_at	TBCA	tubulin folding cofactor A
202338_at	TK1	thymidine kinase 1, soluble
209903_s_at	ATR	ataxia telangiectasia and Rad3 related
212083_at	TEX261	testis expressed 261
201384_s_at	NBR1	neighbor of BRCA1 gene 1
214643_x_at	BIN1	bridging integrator 1
210070_s_at	CPT1B	carnitine palmitoyltransferase 1B (muscle)
202030_at	BCKDK	branched chain ketoacid dehydrogenase kinase
217189_s_at	SMG7	Smg-7 homolog, nonsense mediated mRNA decay factor (C. elegans)
210352_at	BRD8	bromodomain containing 8
221487_s_at	ENSA	endosulfine alpha
203286_at	RNF44	ring finger protein 44

Barry et al. Table S5

Multivariate ANOVA Model	Source	df	Pillai	F	df1/df2	p-value
PCA (2 dimensions)	Replicate	17	1.8221	18.67	34/62	<2e-16
	% Tumor Cellularity	1	0.0763	1.24	2/30	0.304
	Res.	31				
ANOVA Model	Source	df	SS	MS	F	p-value
ER Pathway	Replicate	17	5.5201	0.3247	81.3899	5.80E-21
	% Tumor Cellularity	1	0.0021	0.0021	0.5356	0.4697
	Res.	31	0.1237	0.004		
Recurrence	Replicate	17	1.0153	0.0597	7.7631	5.50E-07
	% Tumor Cellularity	1	0.0345	0.0345	4.4885	0.0422
	Res.	31	0.2385	0.0077		
Adriamycin	Replicate	17	3.8809	0.2283	8.2298	2.80E-07
	% Tumor Cellularity	1	0.0249	0.0249	0.899	0.3504
	Replicate	31	0.8599	0.0277		
Docetaxel	Replicate	17	1.9565	0.1151	6.0248	8.40E-06
	% Tumor Cellularity	1	0.0292	0.0292	1.5306	0.2253
	Res.	31	0.5922	0.0191		