

## Supplementary Data

**Title:** Protein Kinase-C delta Mediates Arterial Injury Responses through Regulation of Vascular Smooth Muscle Cell Apoptosis

**Authors:**

Dai Yamanouchi, M.D., Ph.D.<sup>1</sup>, Kaori Kato, M.D.<sup>1</sup>, Evan J Ryer, M.D.<sup>2</sup>, Fan Zhang, M.D., Ph.D.<sup>1</sup>, Bo Liu, Ph. D.<sup>1\*</sup>

**Affiliation:**

1. Division of Peripheral Vascular Surgery, Department of Surgery

University of Wisconsin Madison

2. Division of Vascular Surgery, Department of Surgery

Weill Medical College of Cornell University

**\*All Correspondence to:**

Bo Liu, Ph. D.

Department of Surgery, University of Wisconsin Madison

1111 Highland Avenue, WIMR 5120, Madison, WI 53705

Tel: 608-263-5931, Fax: 608-262-3330

[liub@surgery.wisc.edu](mailto:liub@surgery.wisc.edu)

## **SUPPLEMENTARY FIGURE LEGENDS**

### **Supplementary Figure 1.**

(A) Representative photomicrographs of balloon injured rat carotid arteries co-stained for PKC $\delta$  (red) and Ki67 (green) 3 and 7 days post injury. (Scale bar = 20  $\mu$ m) (B)

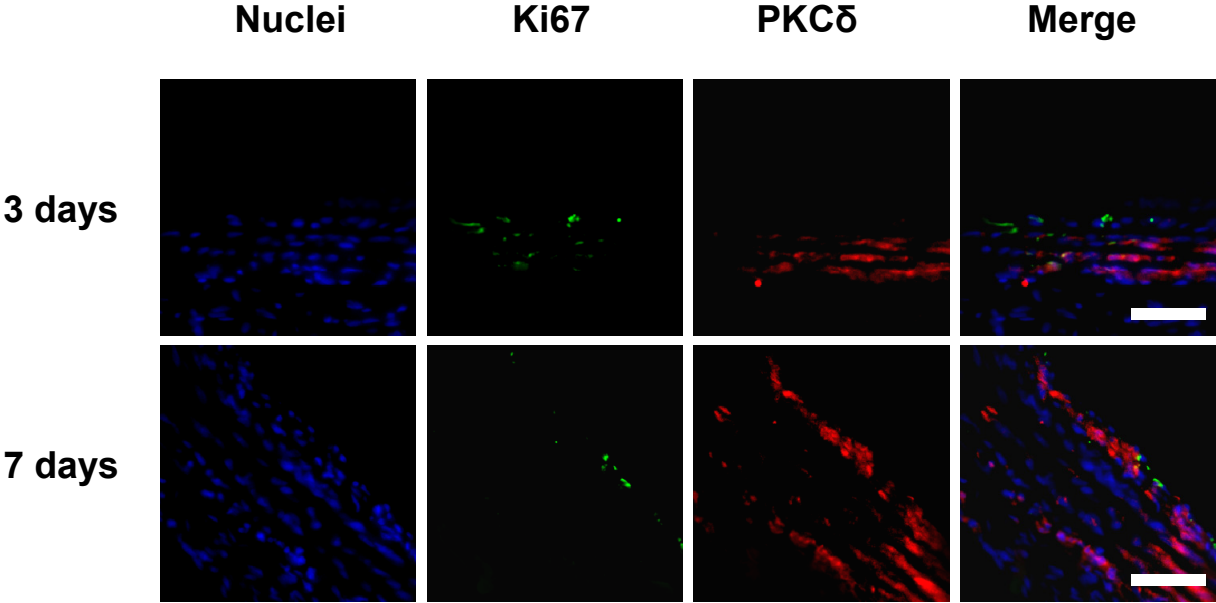
Representative photomicrographs of immunofluorescence co-staining for PKC $\delta$  (green), TUNEL staining (red), and nuclei (blue) in high power field. Merged images are shown in the right panels (Scale bar = 20  $\mu$ m)

### **Supplementary Figure 2.**

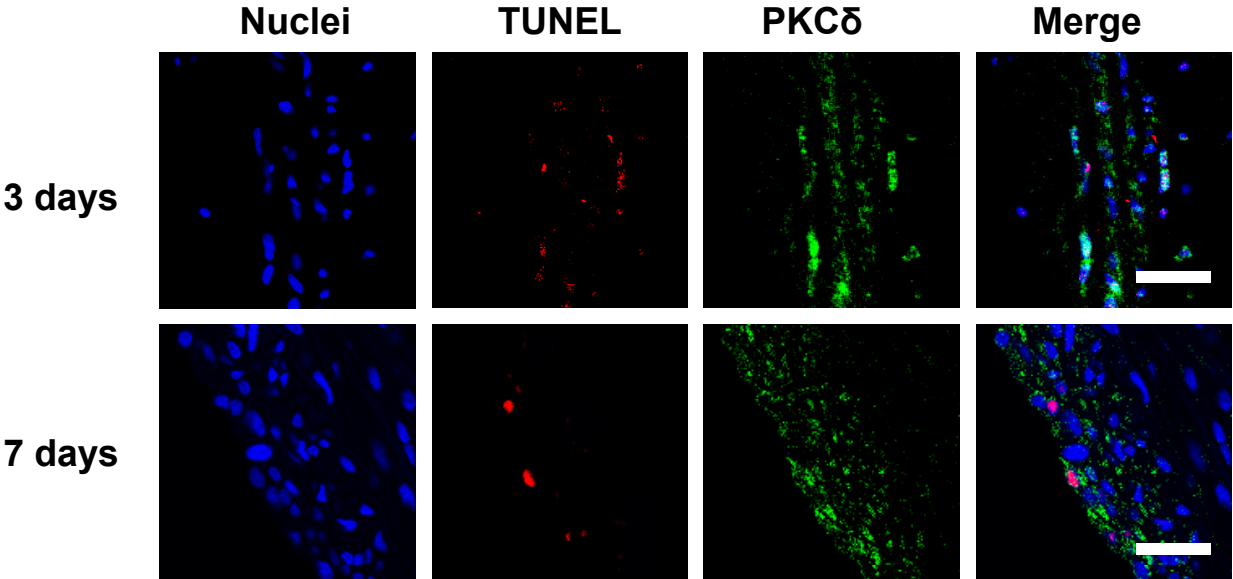
Representative photomicrographs of immunofluorescence staining of the carotid arteries of PKC $\delta$  knock-out mouse (KO) and their wild-type littermates (WT) 14 days after ligation in high power field. The cross sections were stained for nuclei (blue), Ki67 (green), and TUNEL (red). Merged images are shown on the right panels (Scale bar = 10  $\mu$ m).

# Supplementary Figure 1

A



B



Supplementary Figure 2

