

Palmyramide A, a Cyclic Depsipeptide from a Palmyra Atoll Collection of the Marine Cyanobacterium *Lyngbya majuscula*

Masatoshi Taniguchi, Joshawna K. Nunnery, Niclas Engene, Eduardo Esquenazi, Tara Byrum,

Pieter C. Dorrestein, and William H. Gerwick

Center for Marine Biotechnology and Biomedicine, Scripps Institution of Oceanography and

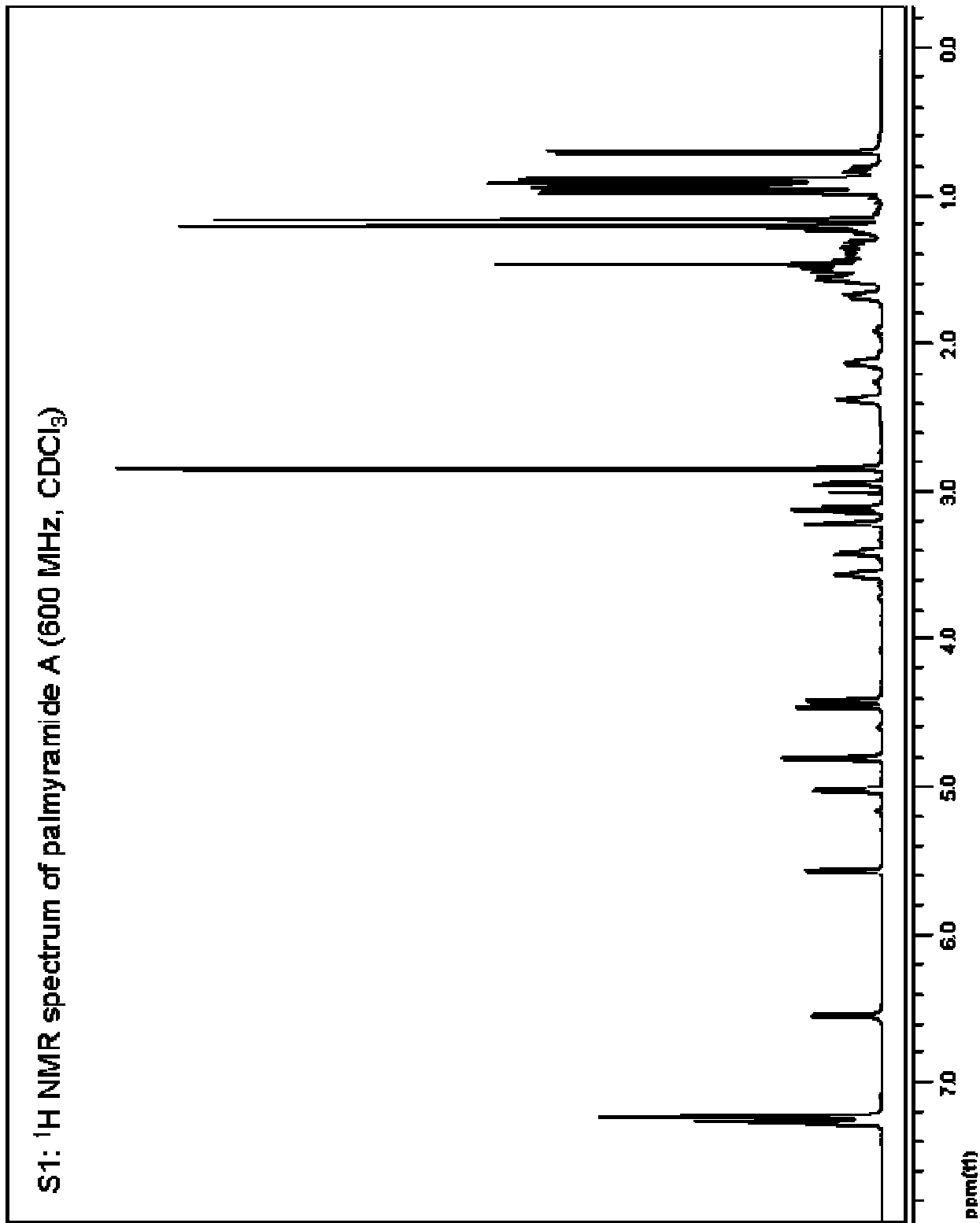
Skaggs School of Pharmacy and Pharmaceutical Sciences, University of California San Diego,

La Jolla, CA 92093 USA

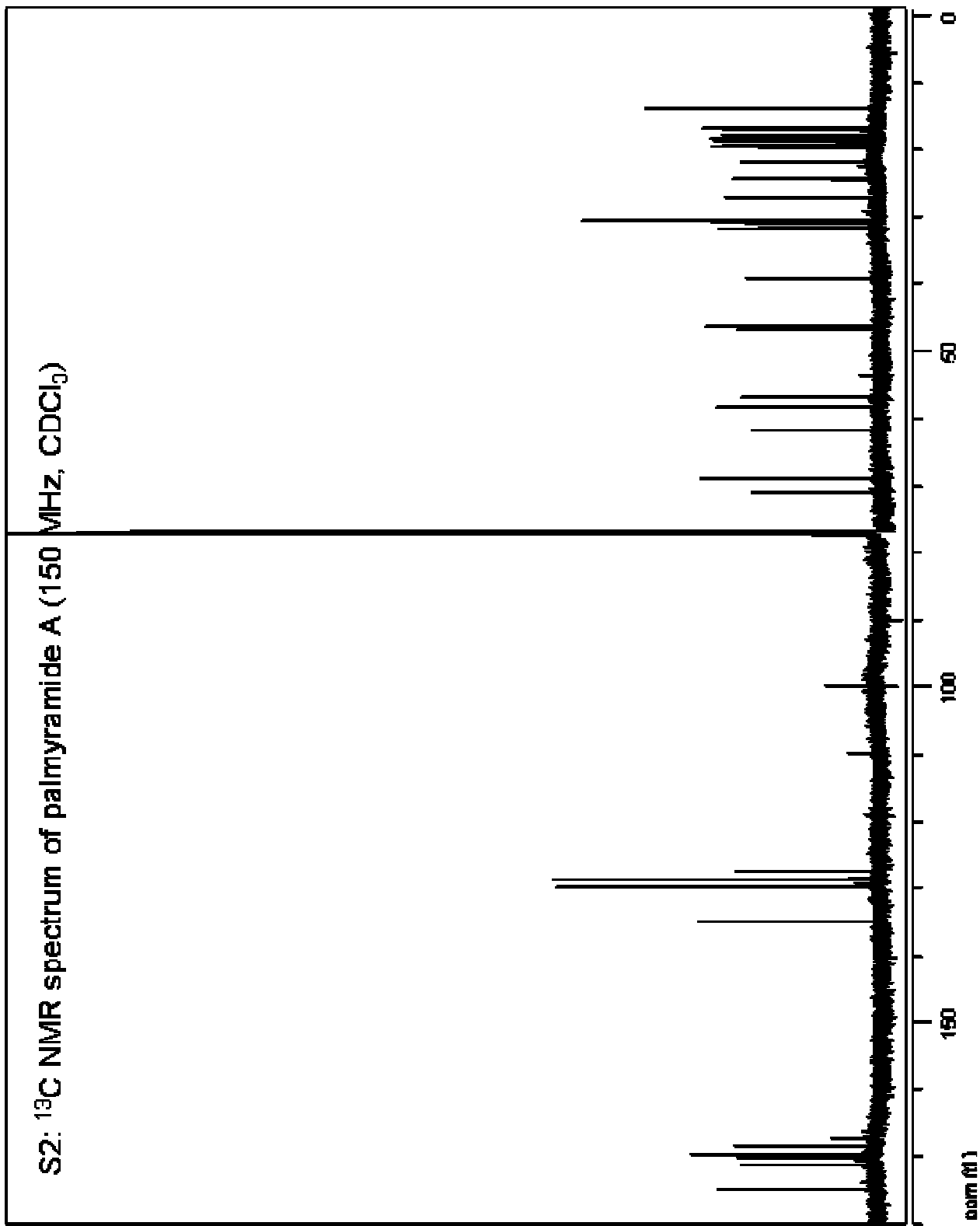
Supporting Information

- S1: ¹H NMR spectrum of palmyramide A (600 MHz, CDCl₃)
- S2: ¹³C NMR spectrum of palmyramide A (150 MHz, CDCl₃)
- S3: COSY spectrum of palmyramide A (CDCl₃)
- S4: TOCSY spectrum of palmyramide A (CDCl₃)
- S5: HSQC spectrum of palmyramide A (CDCl₃)
- S6: HMBC spectrum of palmyramide A (CDCl₃)
- S7: Selected HMBC correlations of palmyramide A (**1**).
- S8: HPLC trace of purified palmyramide A with diode array detection and electrospray ionization mass spectrometry detection (**1**).

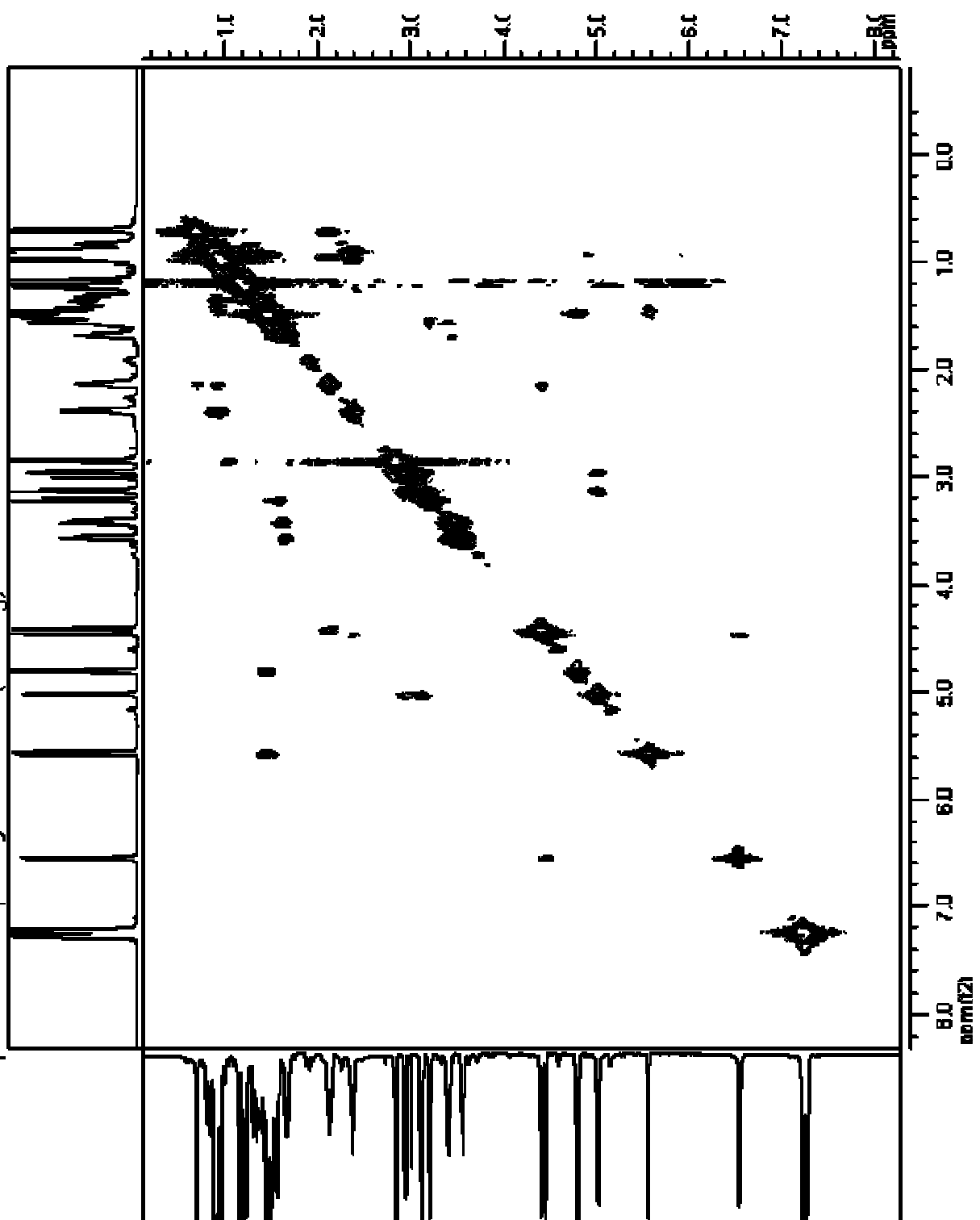
S1: ¹H NMR spectrum of palmyramide A (600 MHz, CDCl₃)



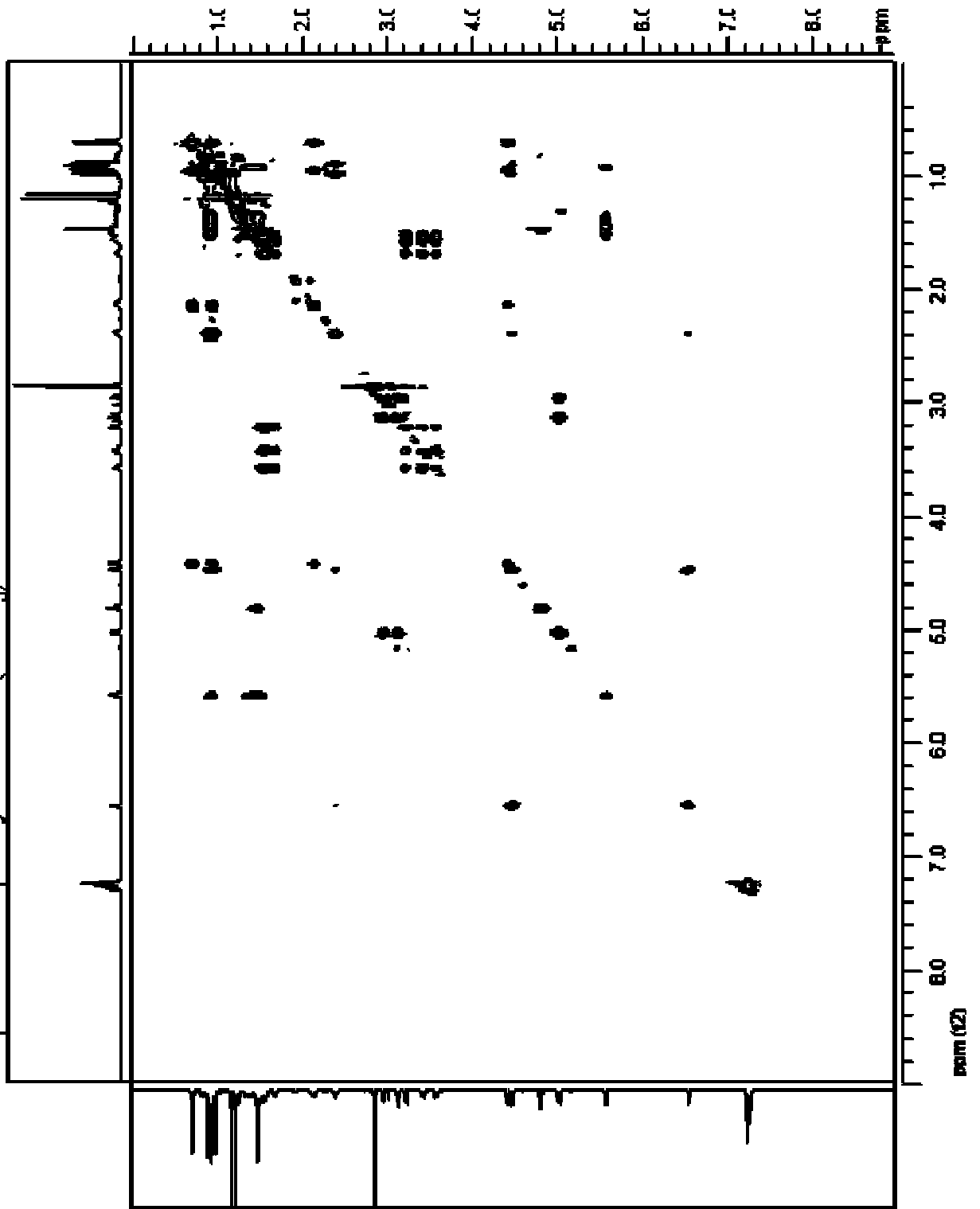
S2: ^{13}C NMR spectrum of palmyramide A (150 MHz, CDCl_3)



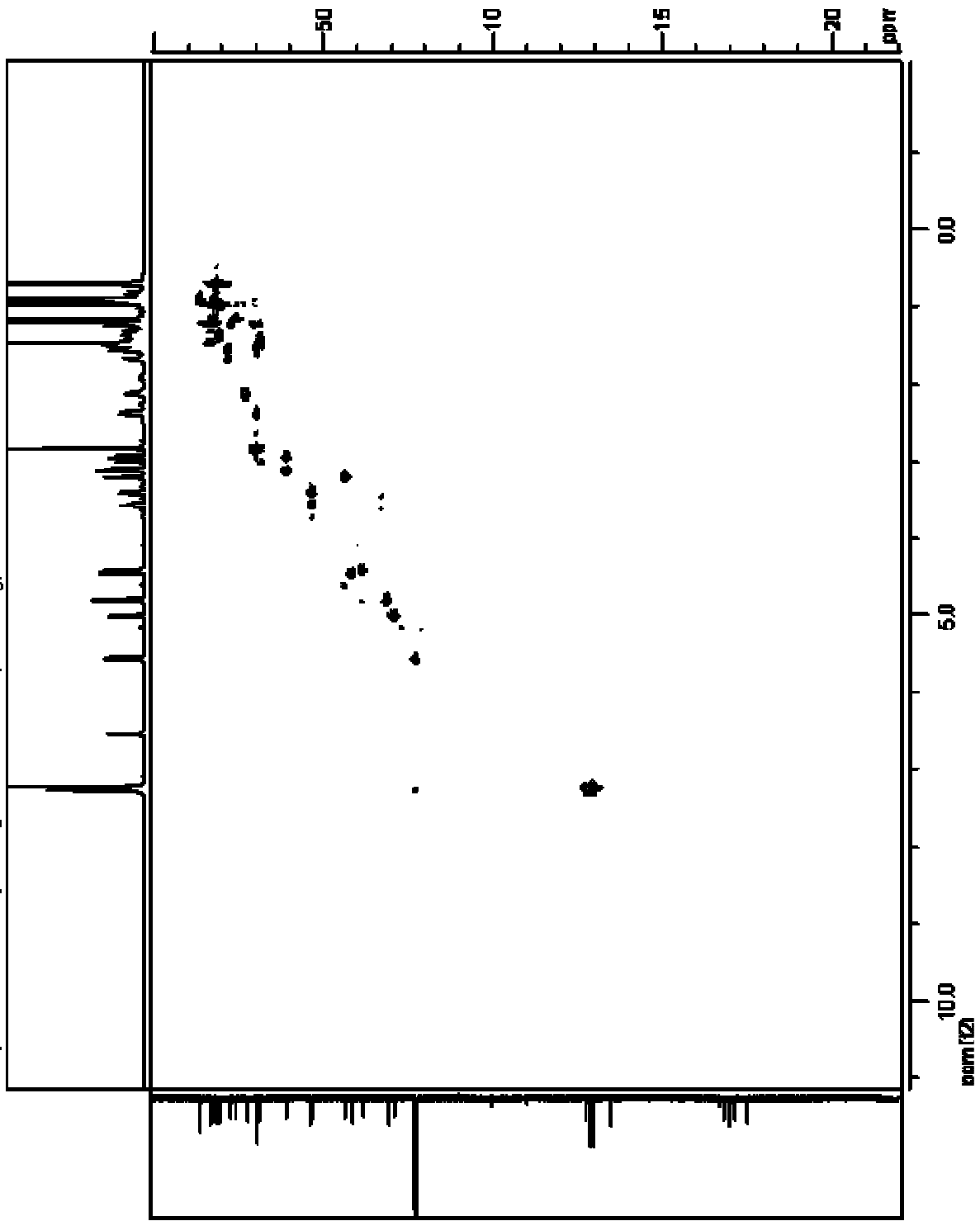
S3: COSY spectrum of palmyramide A (CDCl₃)



S4: TOCSY spectrum of palmyramide A (CDCl₃)



S5: HSQC spectrum of palmyramide A (CDCl₃)



S6: HMBC spectrum of palmyramide A (CDCl₃)

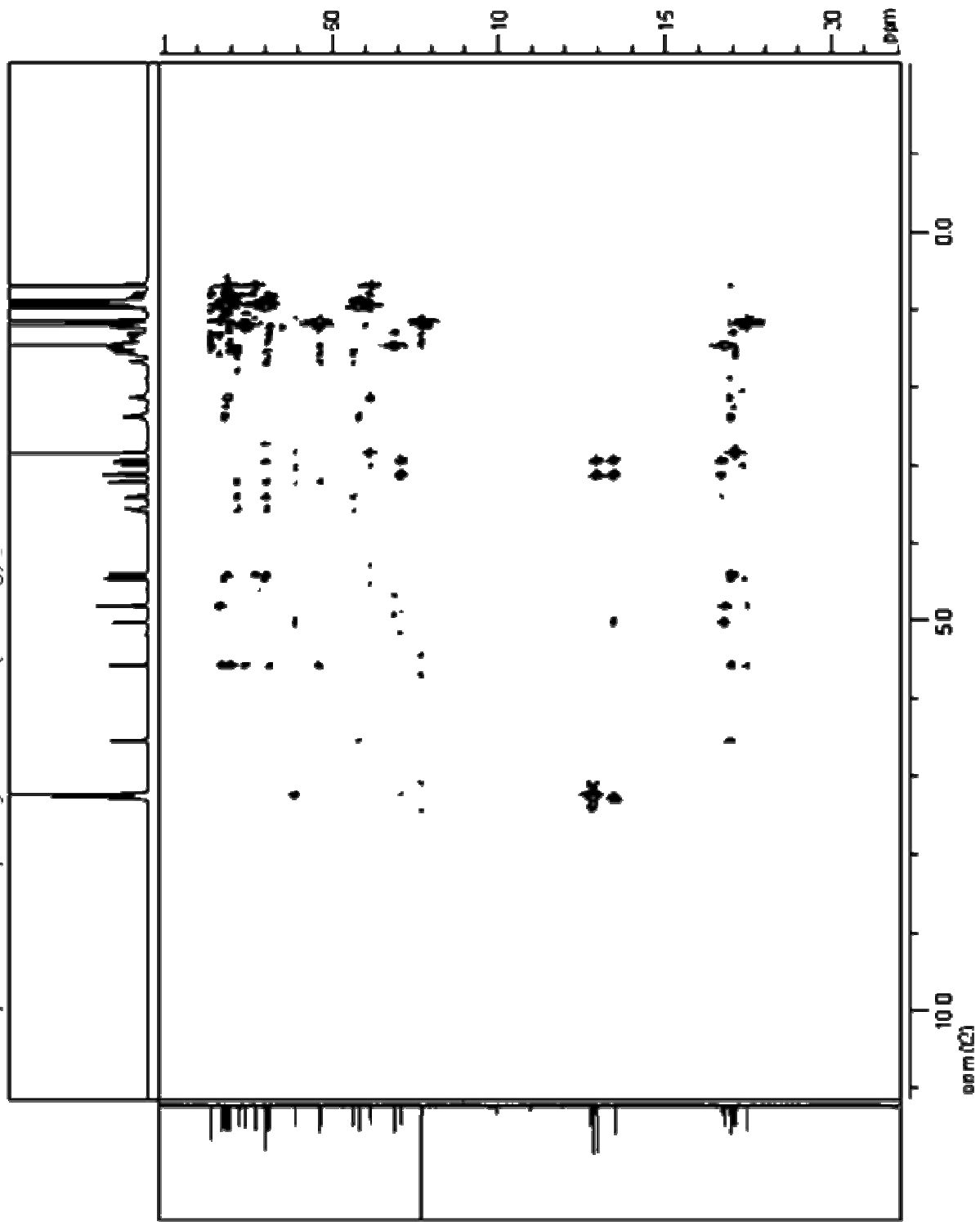


Figure S7: Selected HMBC correlations of palmyramide A (**1**).

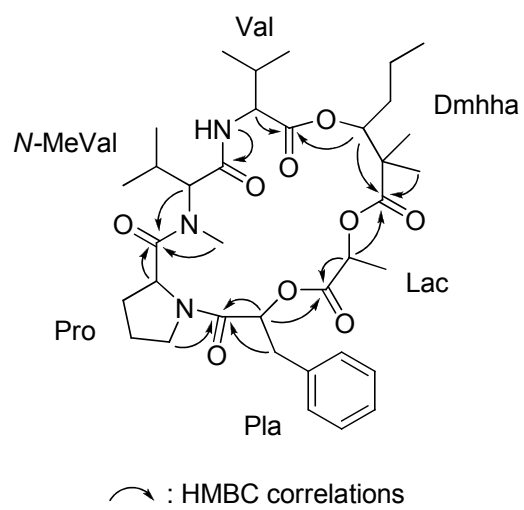
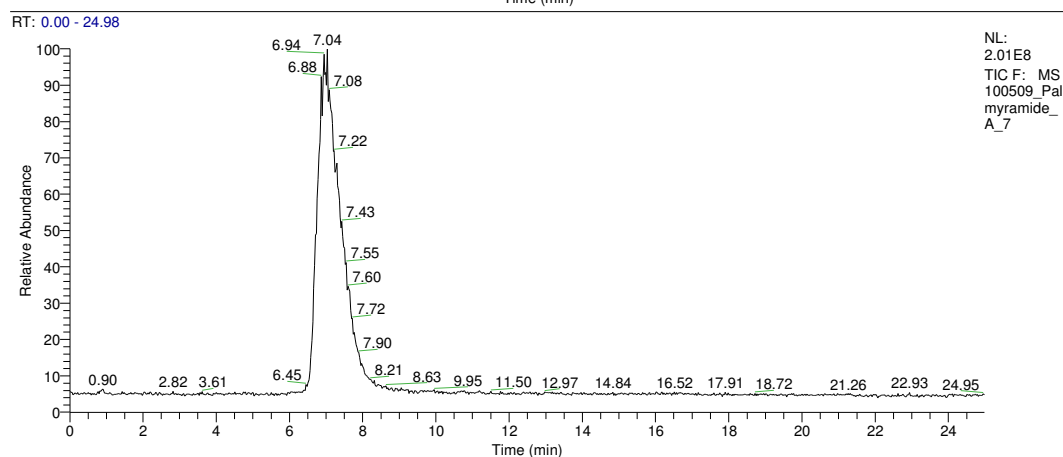
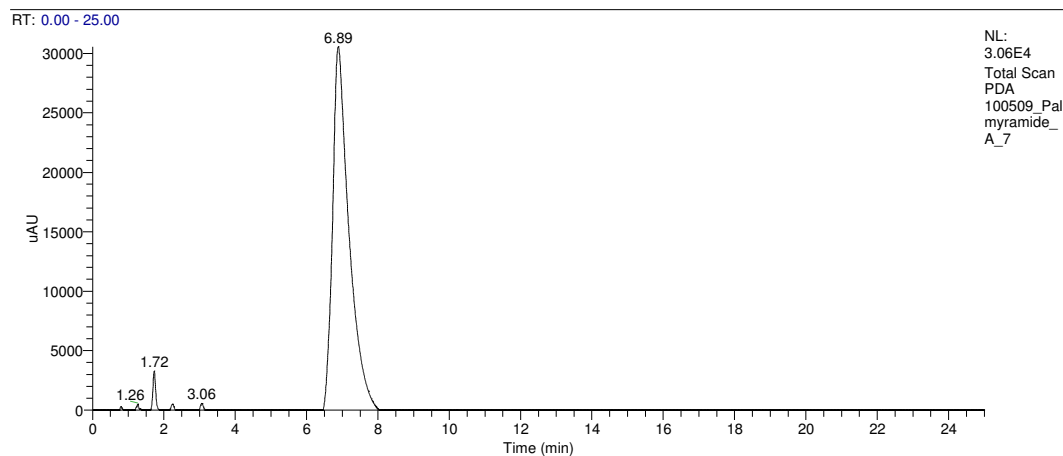


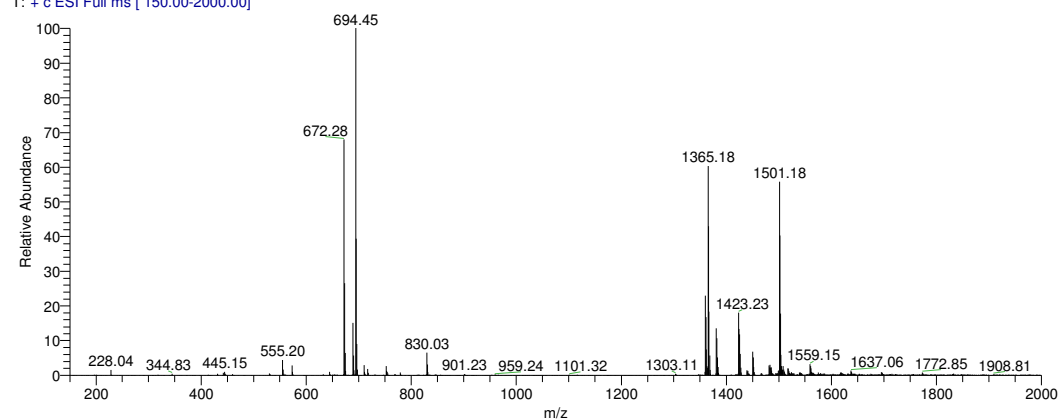
Figure S8: HPLC trace of purified palmyramide A with diode array detection and electrospray ionization mass spectrometry detection (1).

D:\Data\Jo\100509_Palmyramide_A_7

10/5/2009 12:32:08 PM



100509_Palmyramide_A_7 #255-291 RT: 6.69-7.53 AV: 37 NL: 1.61E7
T: + c ESI Full ms [150.00-2000.00]



Column: Hewlett-Packard Lichrospher 100 RP-18; 5 μ m, 125 x 4 mm; 79925OD-564

Conditions: 0.7 mL/min isocratic 70:30 CH₃CN:H₂O

Injection: 10 μ L injection of 100 μ g/mL solution of palmyramide A in 100% CH₃CN (peak at 1.72 min retention in the PDA trace represents the 100% CH₃CN elution peak, or one column volume)

m/z : 672.28 = [M+H]⁺; 694.45 = [M+Na]⁺; 1365.18 = [2M+Na]⁺