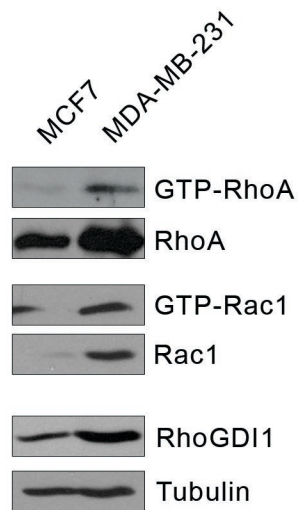


Burridge
Supplementary Information Figure S5



Supplementary Information Figure S5. The level of RhoGDI1 correlates with the level and activity of RhoA and Rac1 in breast cancer cells. MCF7 or MDA-MB-231 cells were lysed and active RhoA or Rac1 were pull-down with GST-RBD or GST-PBD beads. Proteins bound to the beads and lysates were resolved by SDS-PAGE and analyzed by Western blotting.