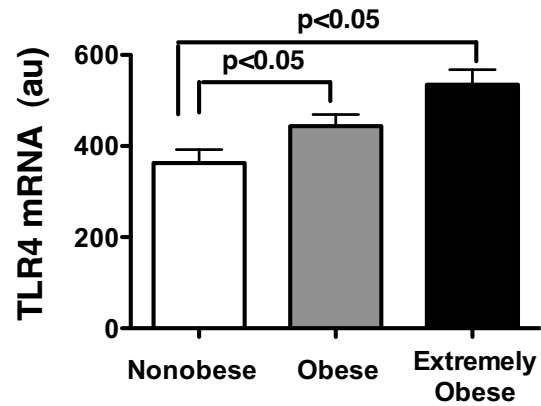
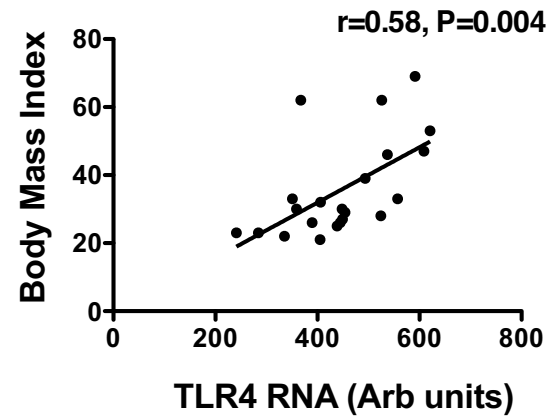
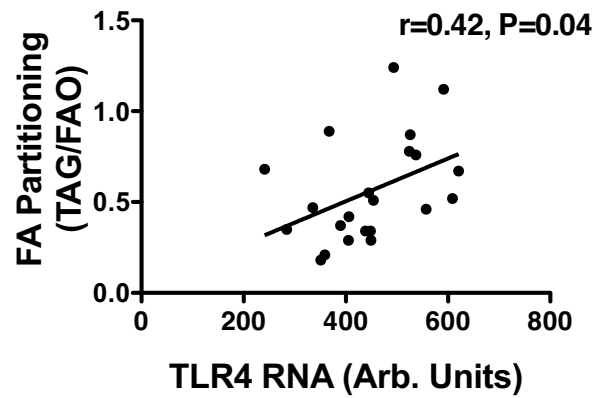
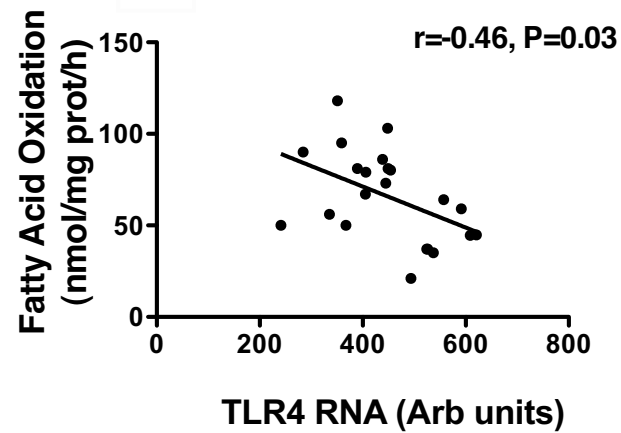


**A.****B.****C.****D.**

**Online Supplemental Figure 1. TLR4 expression is elevated in skeletal muscle from obese individuals and is associated with BMI and fatty acid metabolism.** Rectus abdominus samples were obtained from nonobese and obese humans (n=8 in each group) with a BMI ranging from 22–70 kg/m<sup>2</sup>, mRNA was extracted and an Affymetrix Gene Array was performed. (A) TLR4 mRNA levels in nonobese, obese, and extremely obese humans (mean±SEM). Scatter plots are shown comparing the relationship between TLR4 mRNA and (B) BMI, (C) FA partitioning, (D) FA oxidation. FA partitioning was calculated by dividing the rate (nmol/g wet weight/h) of palmitate esterified into TAG by the rate of palmitate oxidized. \*P<0.05.