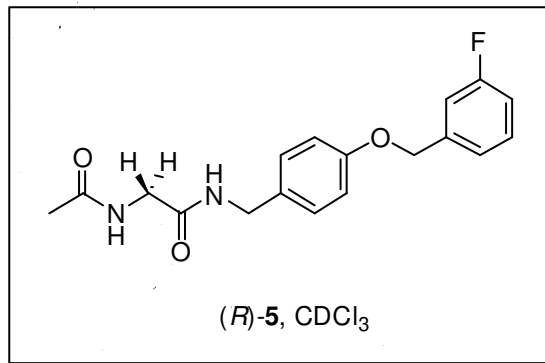
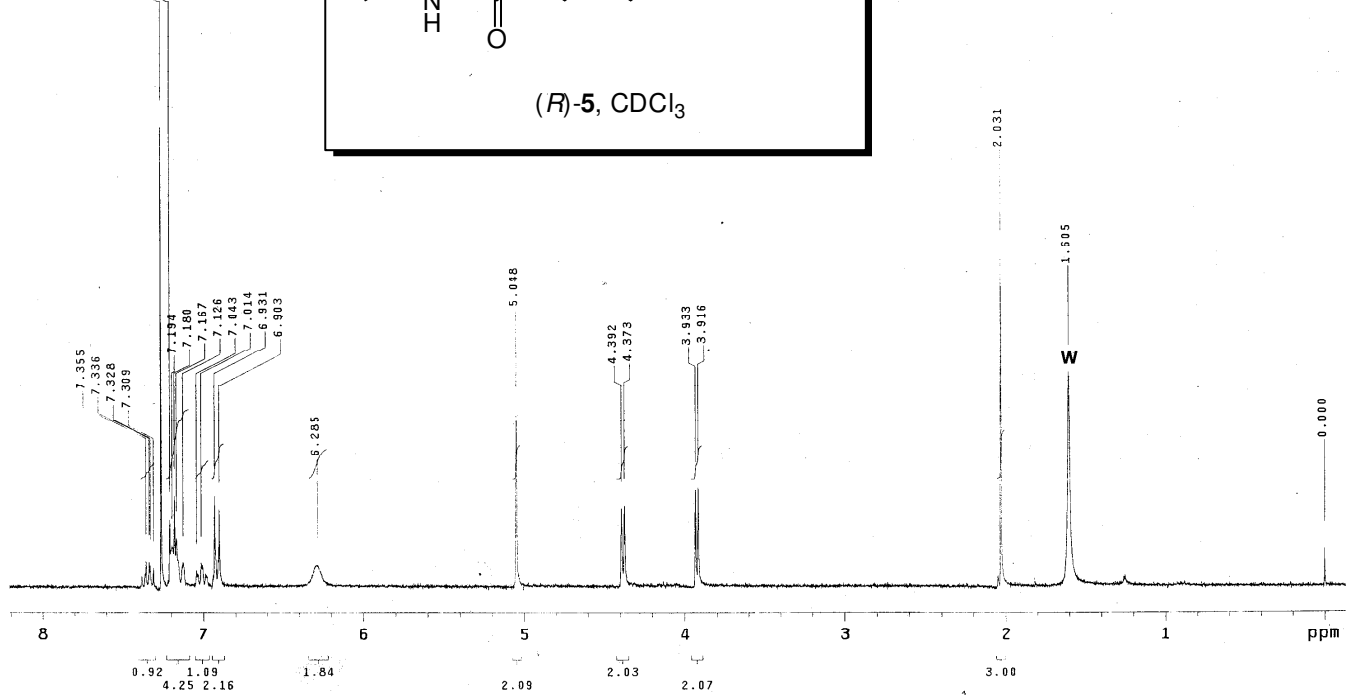
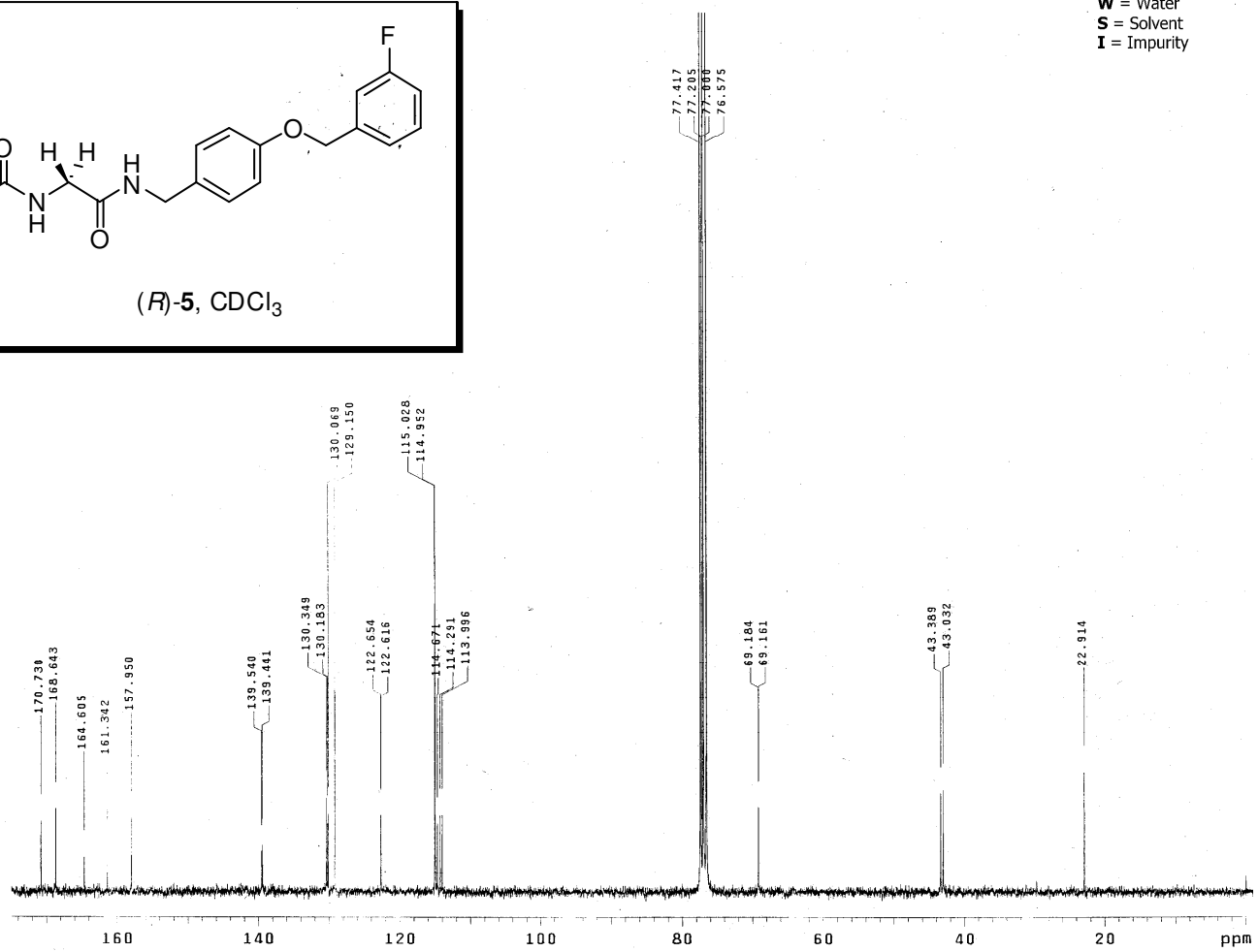
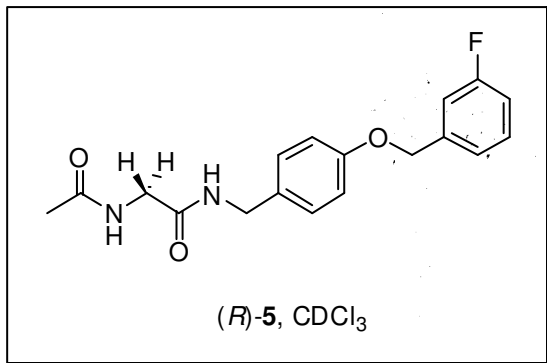


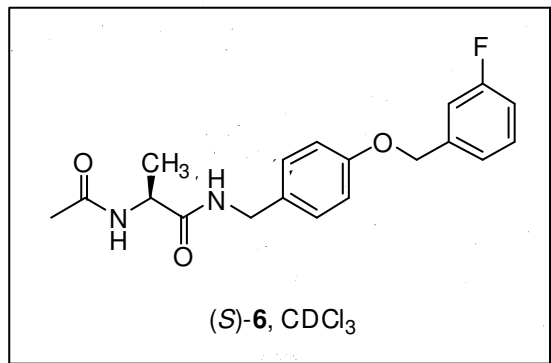
Pulse Sequence: s2pu1
Solvent: CDCl3
Ambient temperature
GEMINI-300 "m56965"
PULSE SEQUENCE
Relax. delay 1.000 sec
Pulse 33.3 degrees
Acq. time 1.998 sec
Width 4500.5 Hz
16 repetitions
OBSERVE H1, 500.13608948 MHz
DATA PROCESSING
FT size 32768
Total time 0 min 0 sec



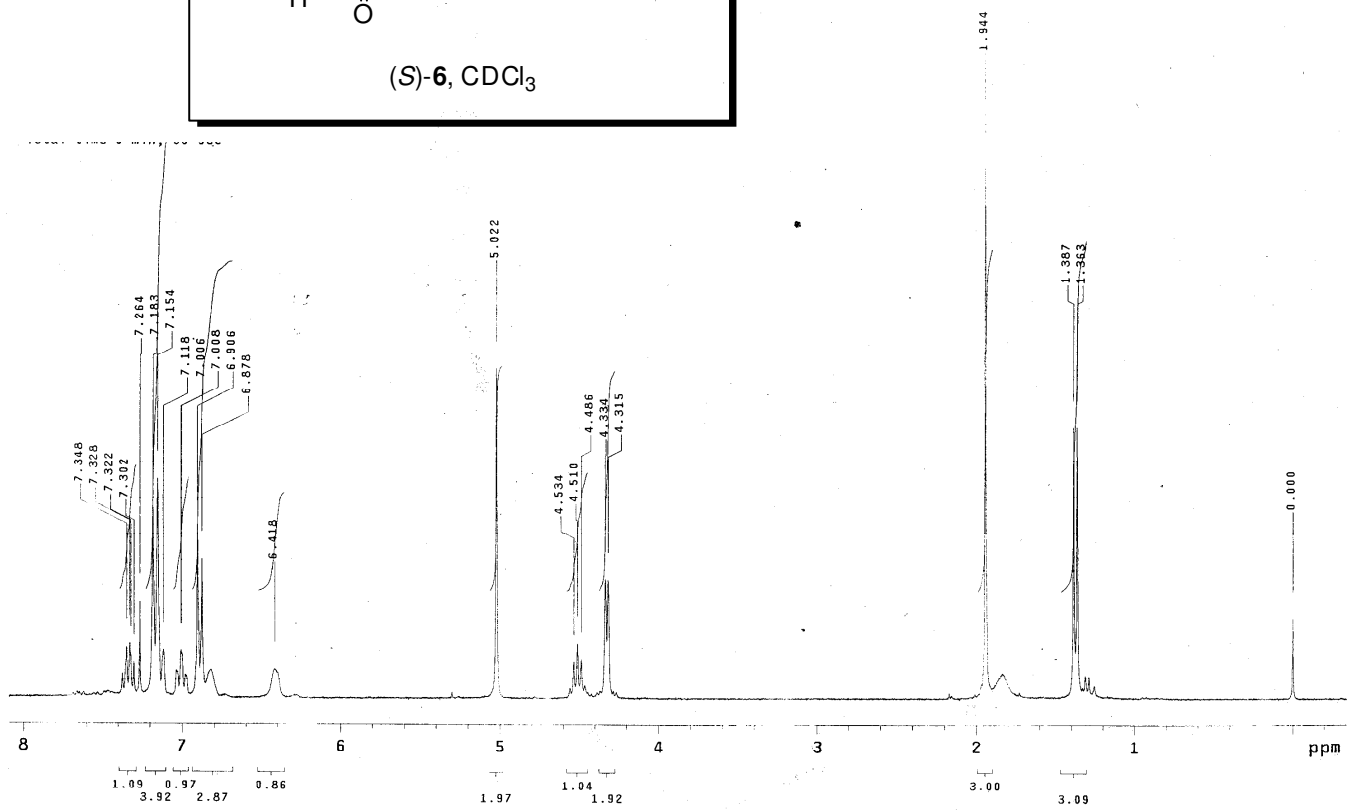
W = Water
S = Solvent
I = Impurity

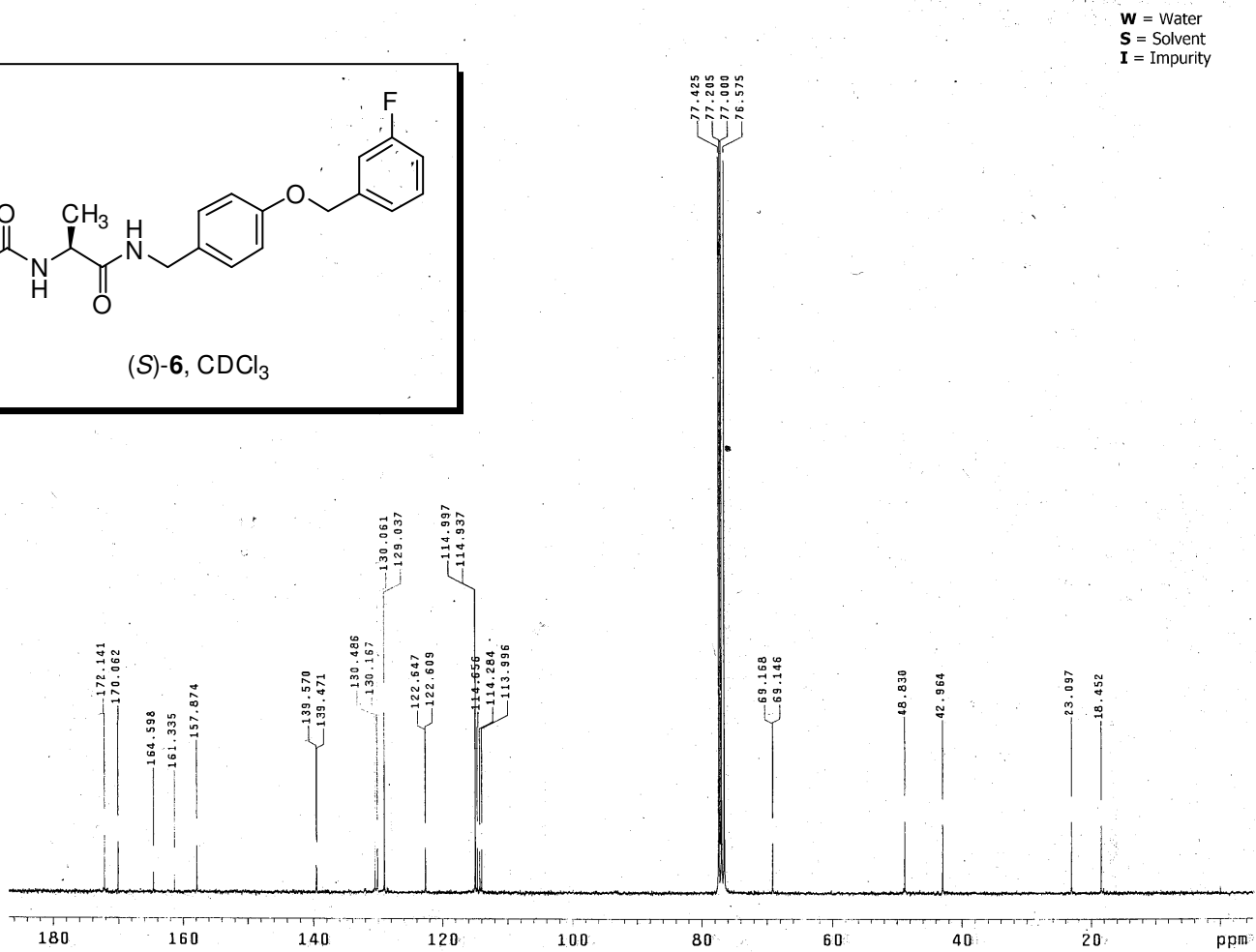
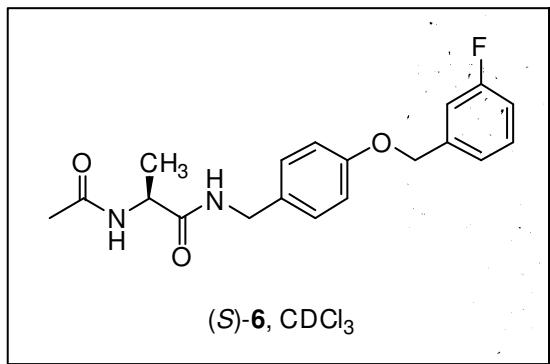




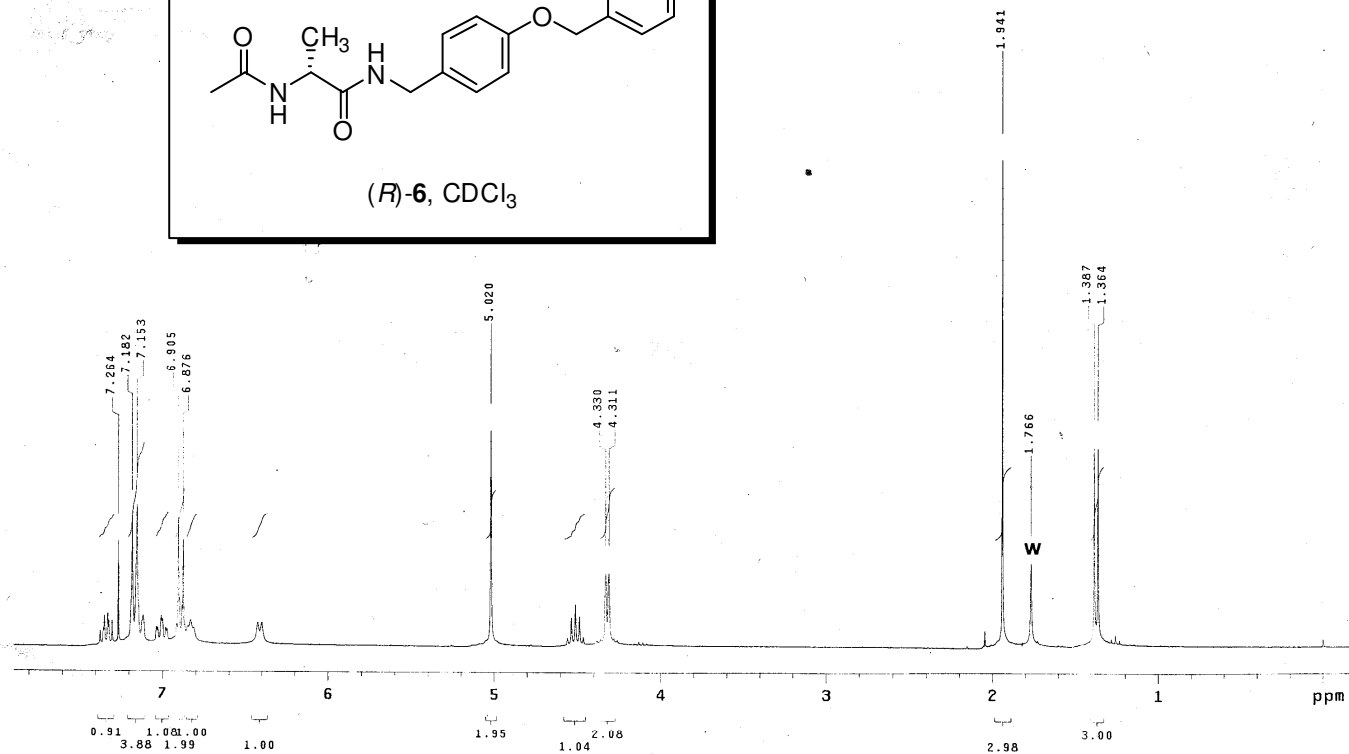
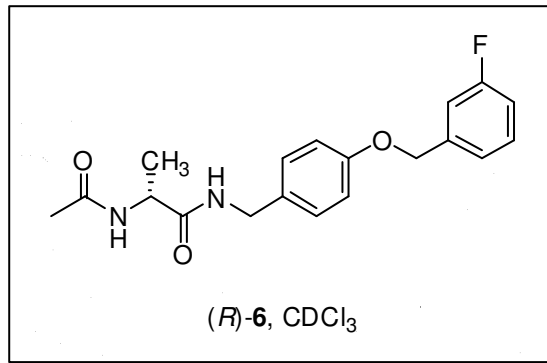


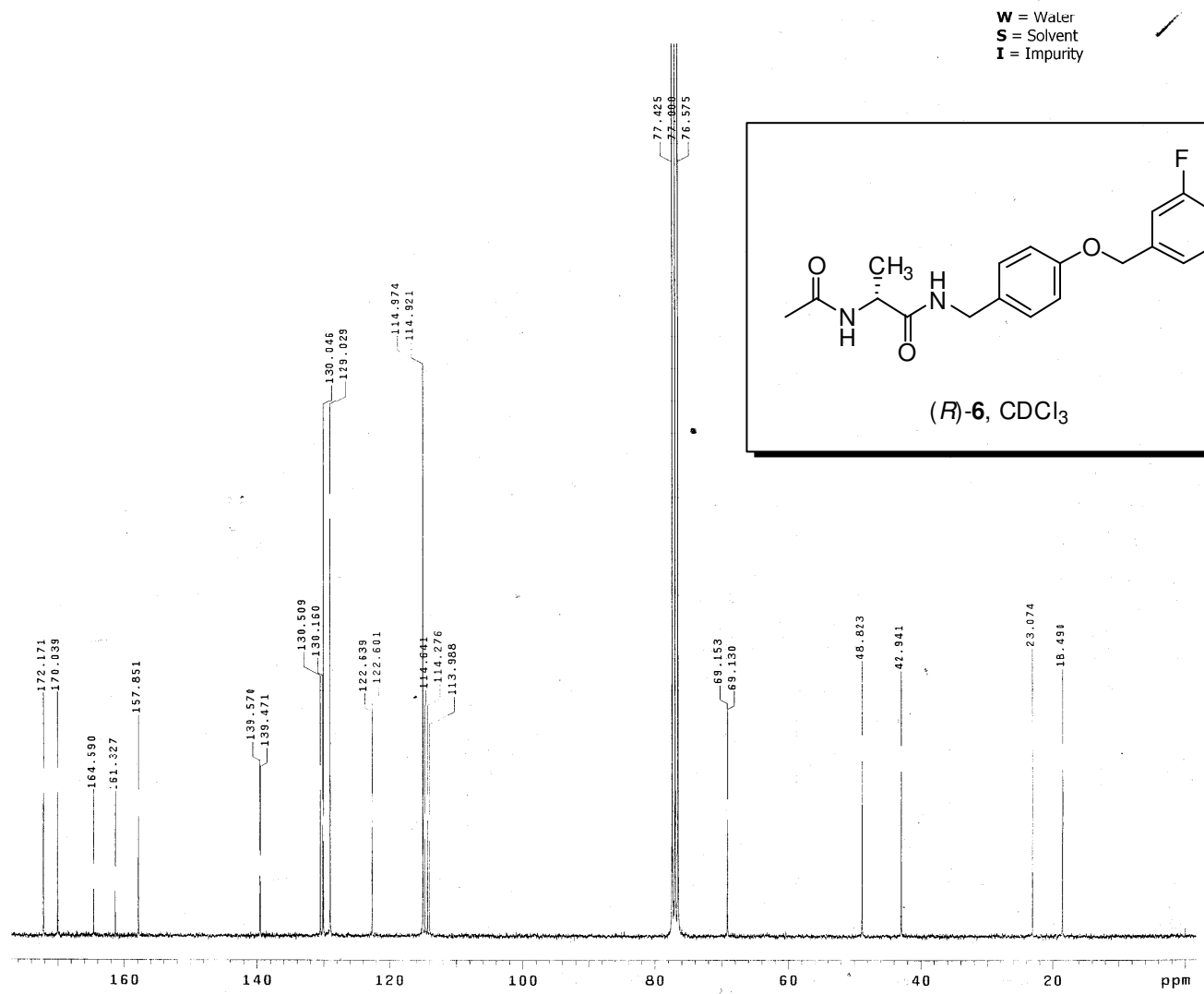
W = Water
 S = Solvent
 I = Impurity

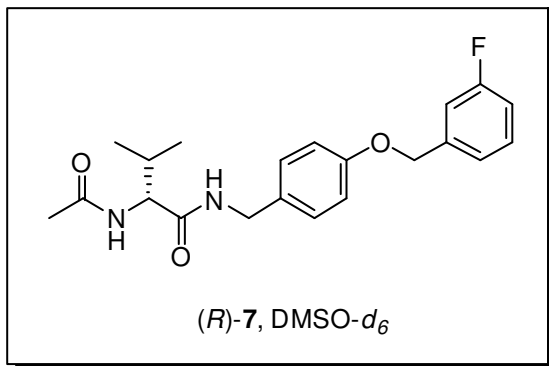




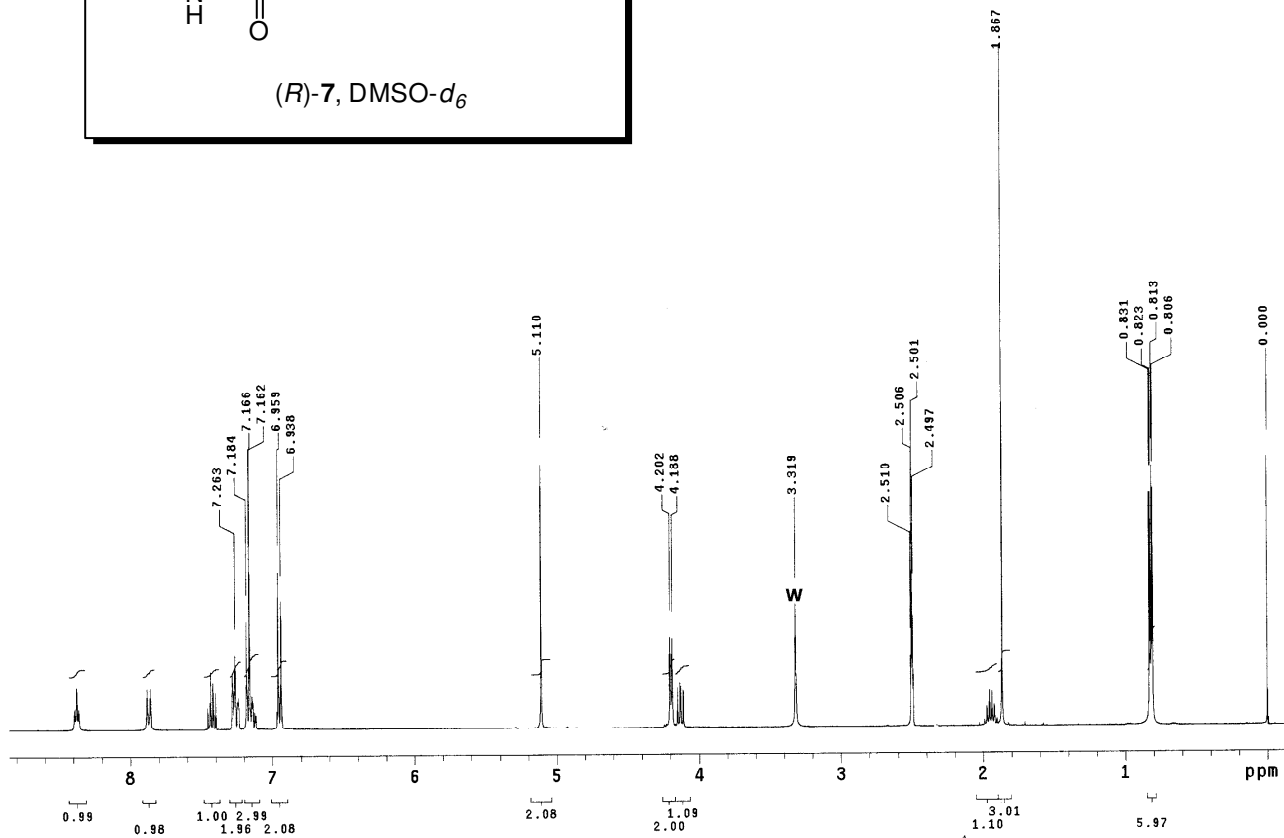
W = Water
S = Solvent
I = Impurity

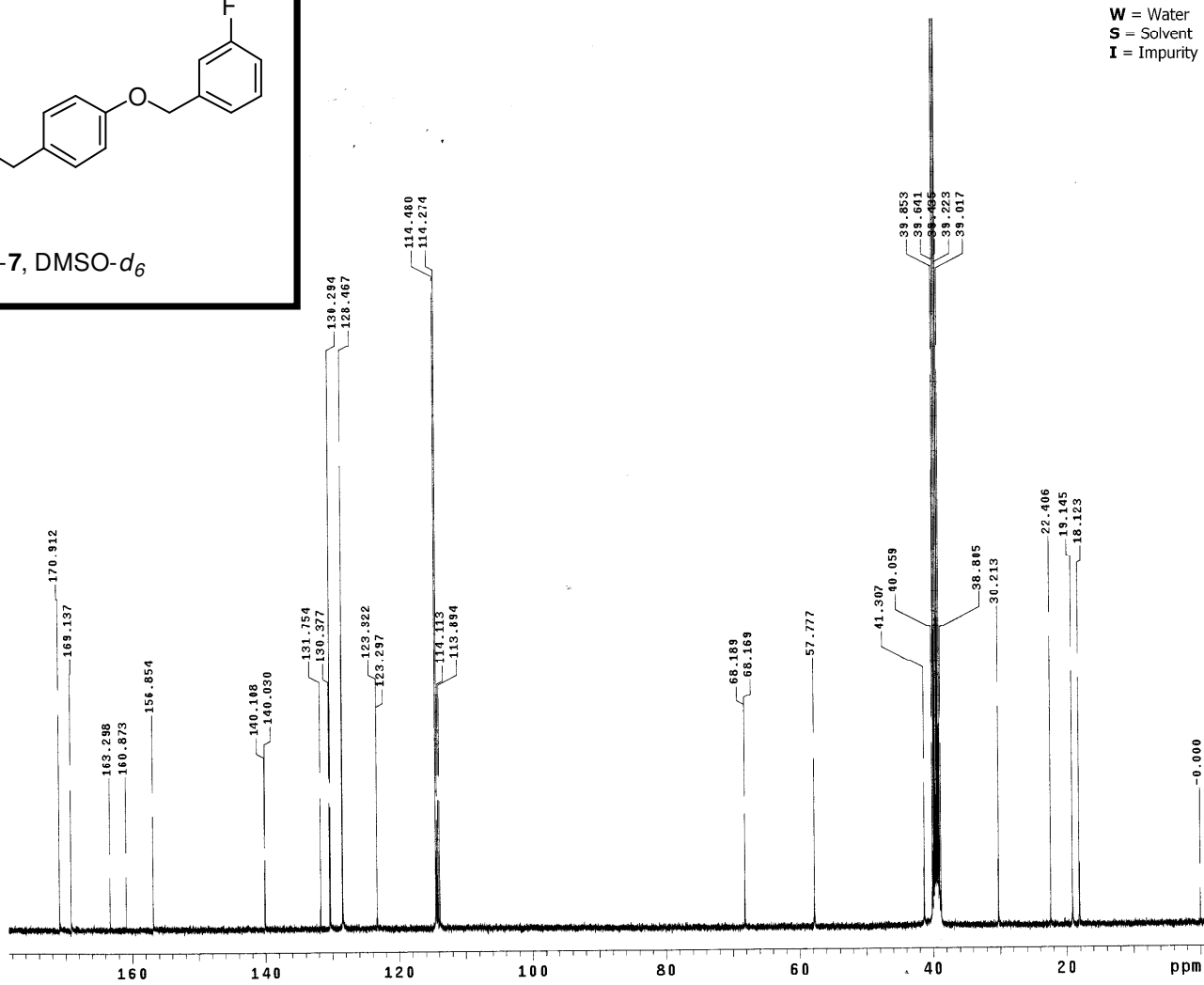
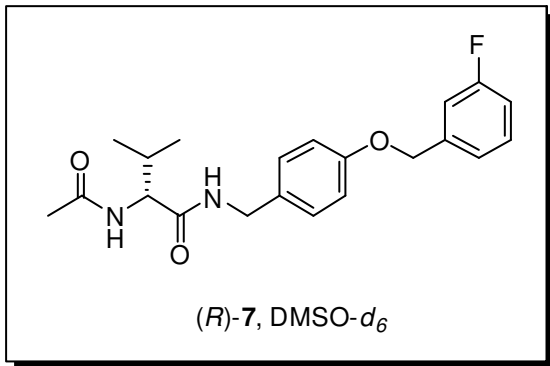




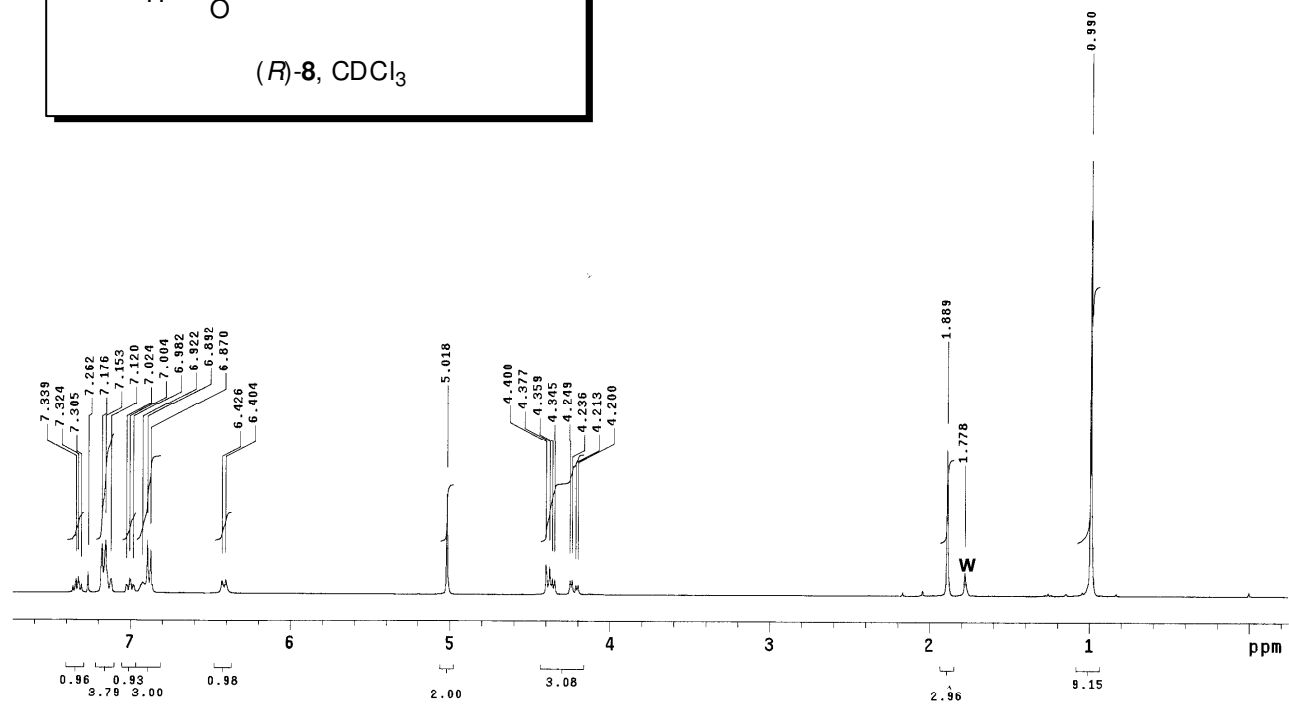
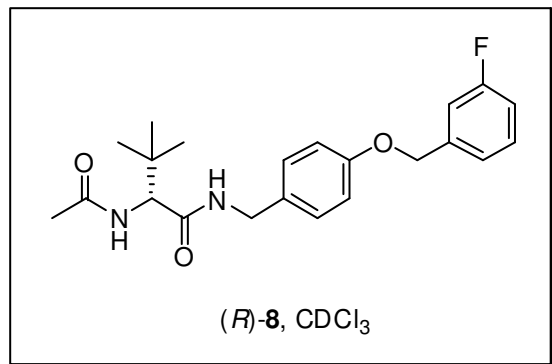


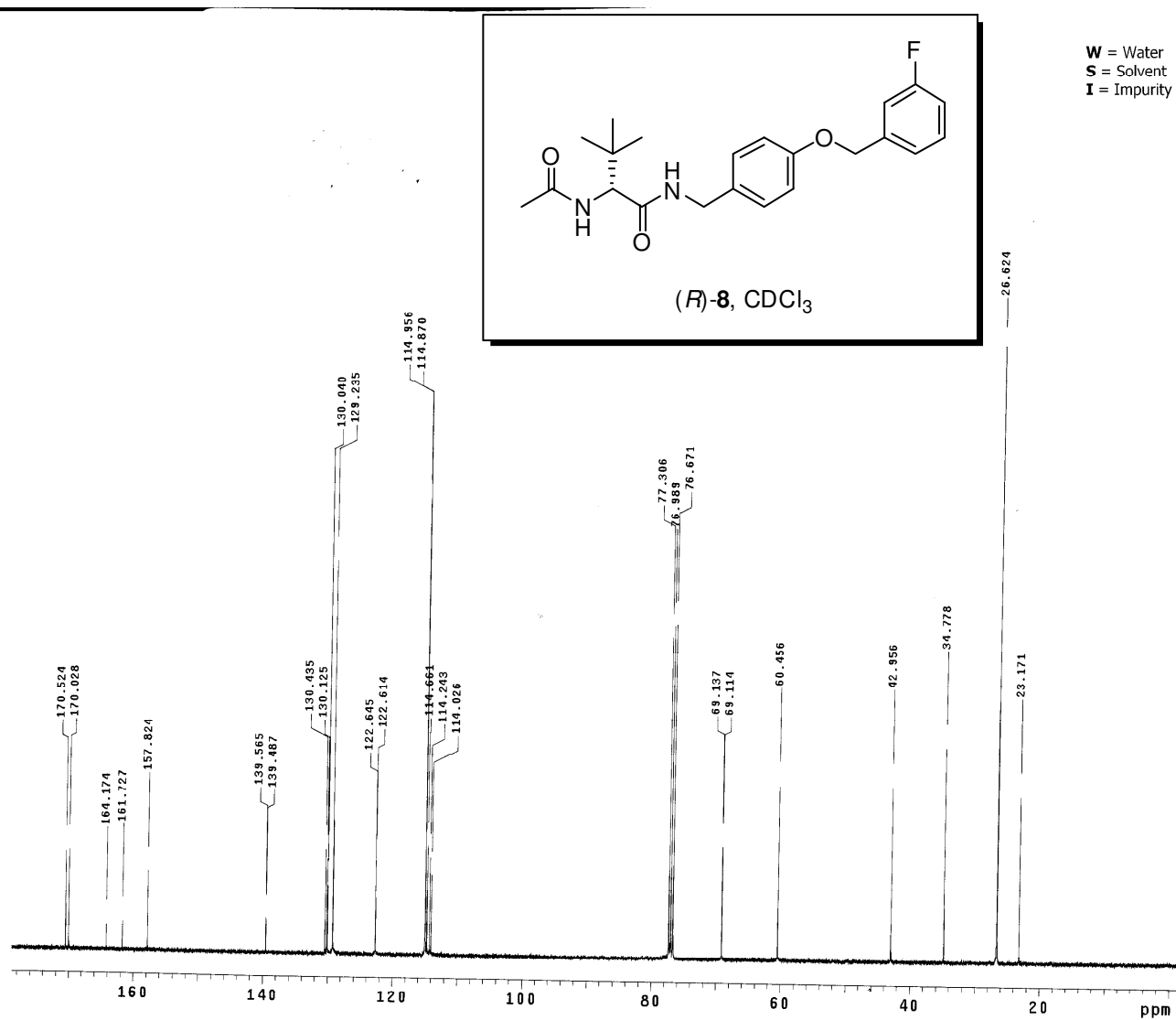
W = Water
 S = Solvent
 I = Impurity

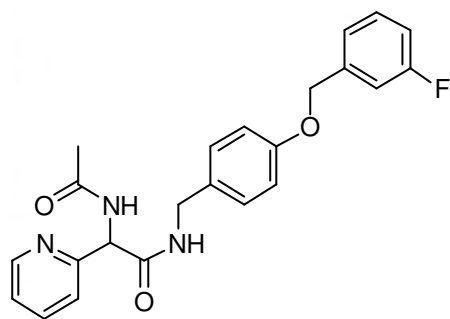




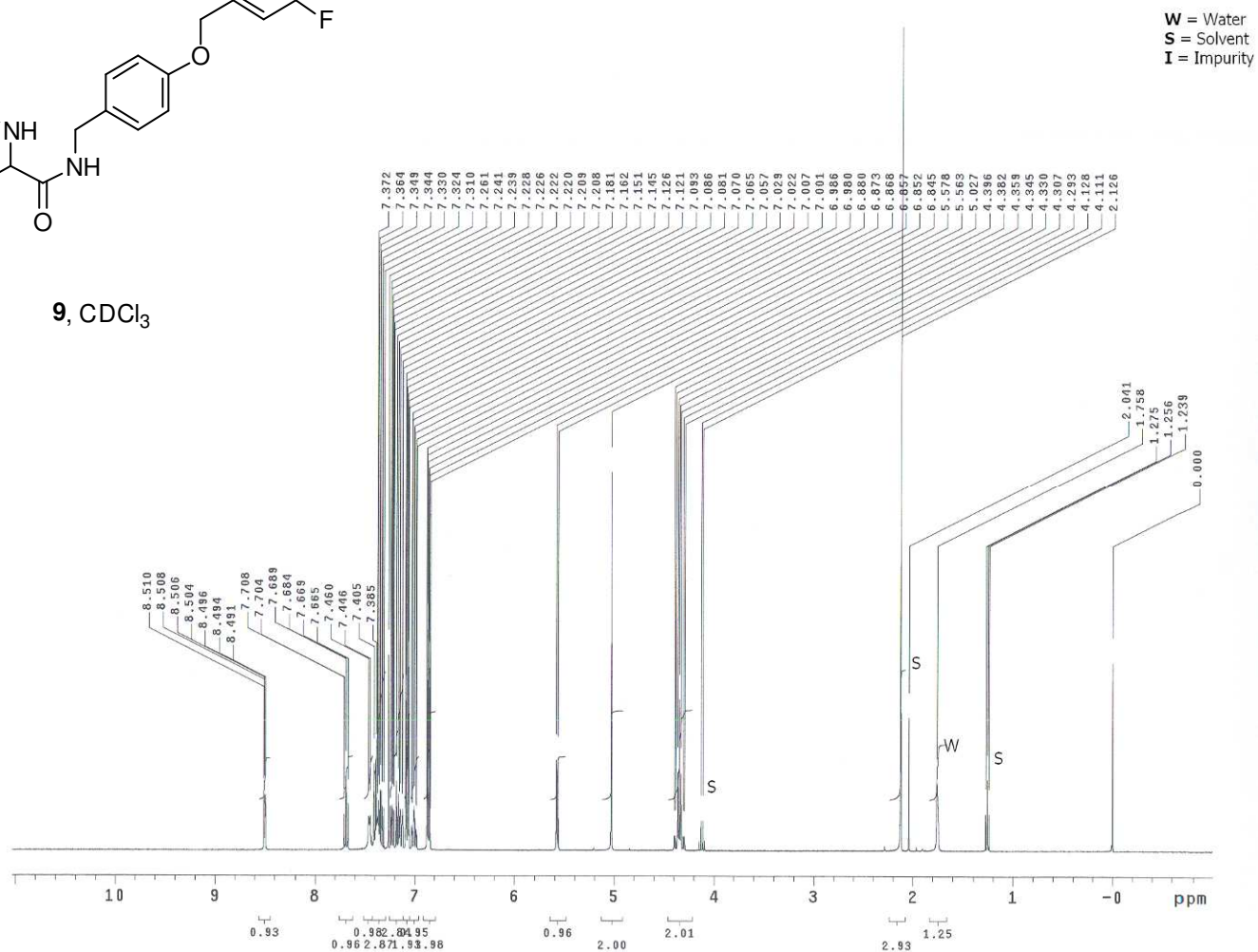
W = Water
S = Solvent
I = Impurity

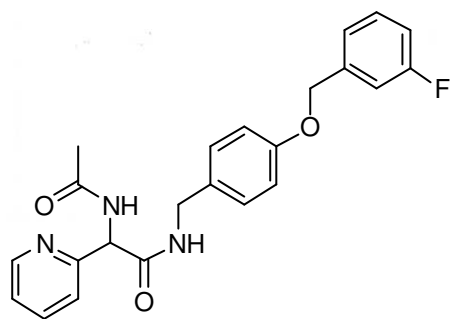




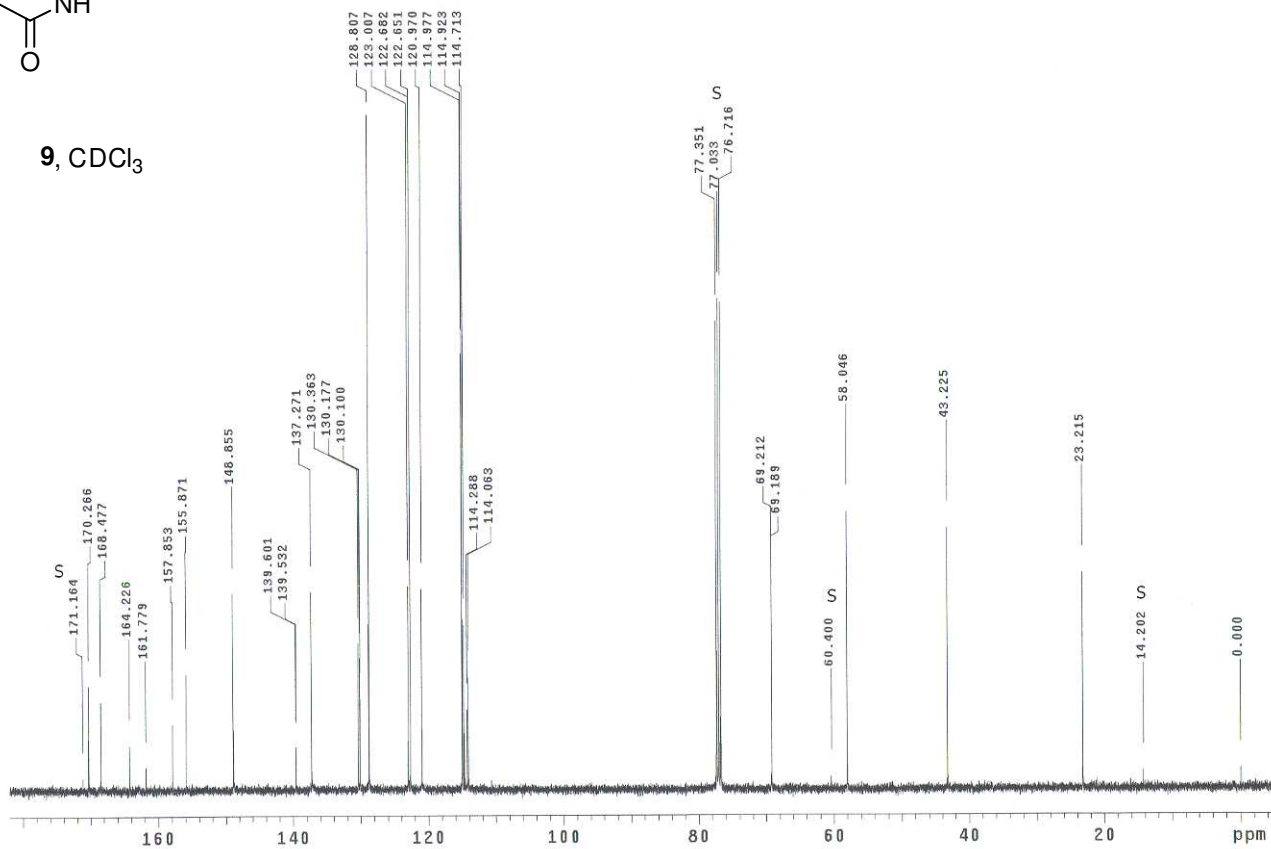


9, CDCl₃

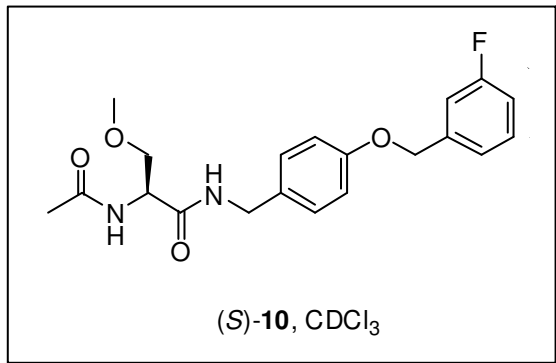




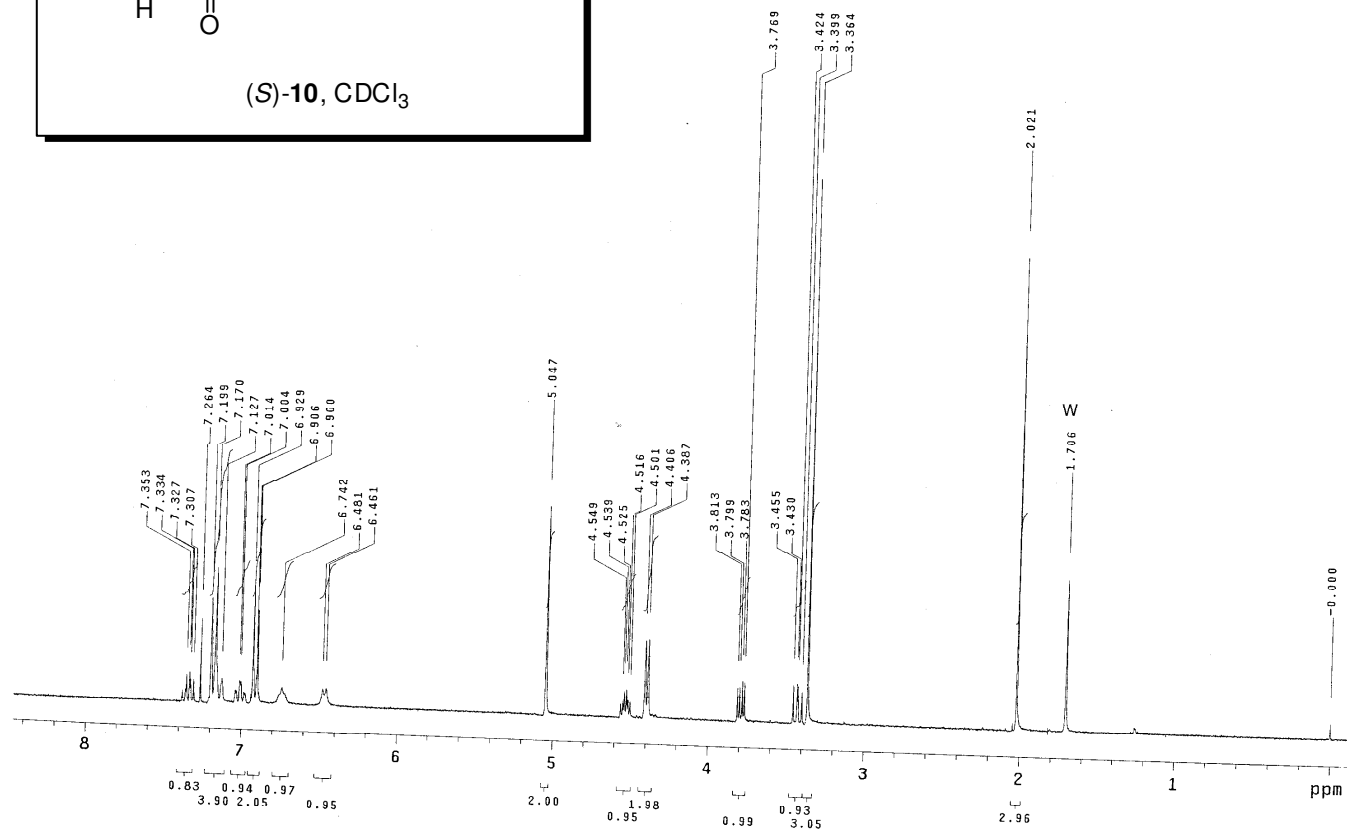
9, CDCl₃

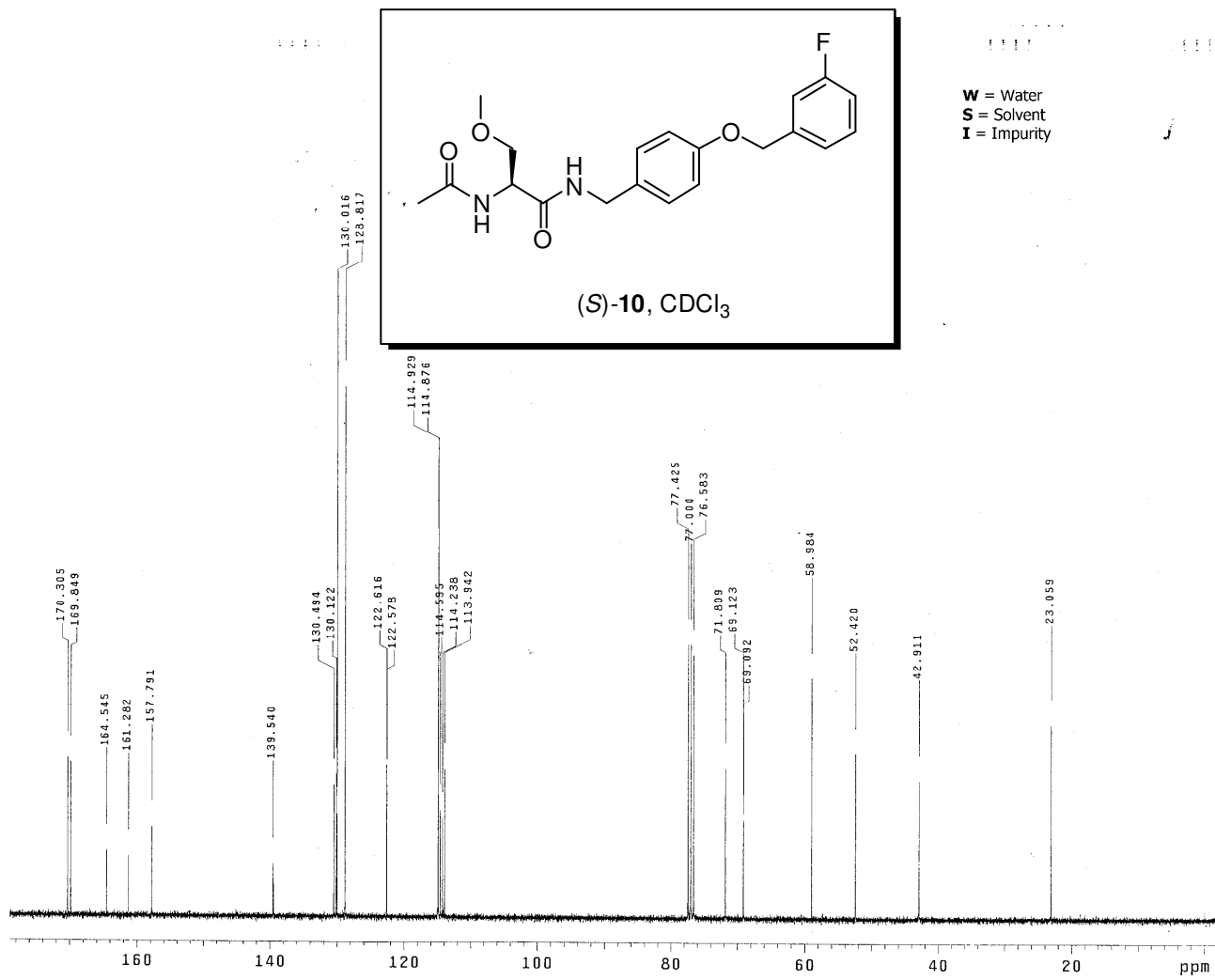


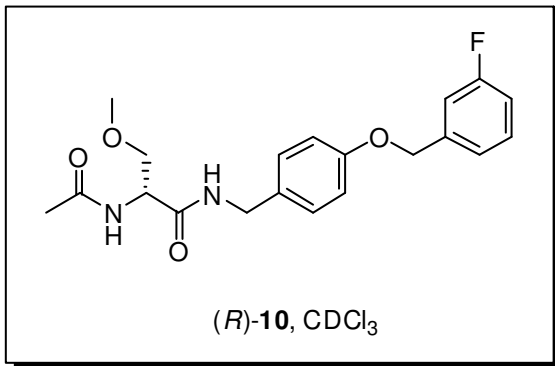
W = Water
S = Solvent
I = Impurit



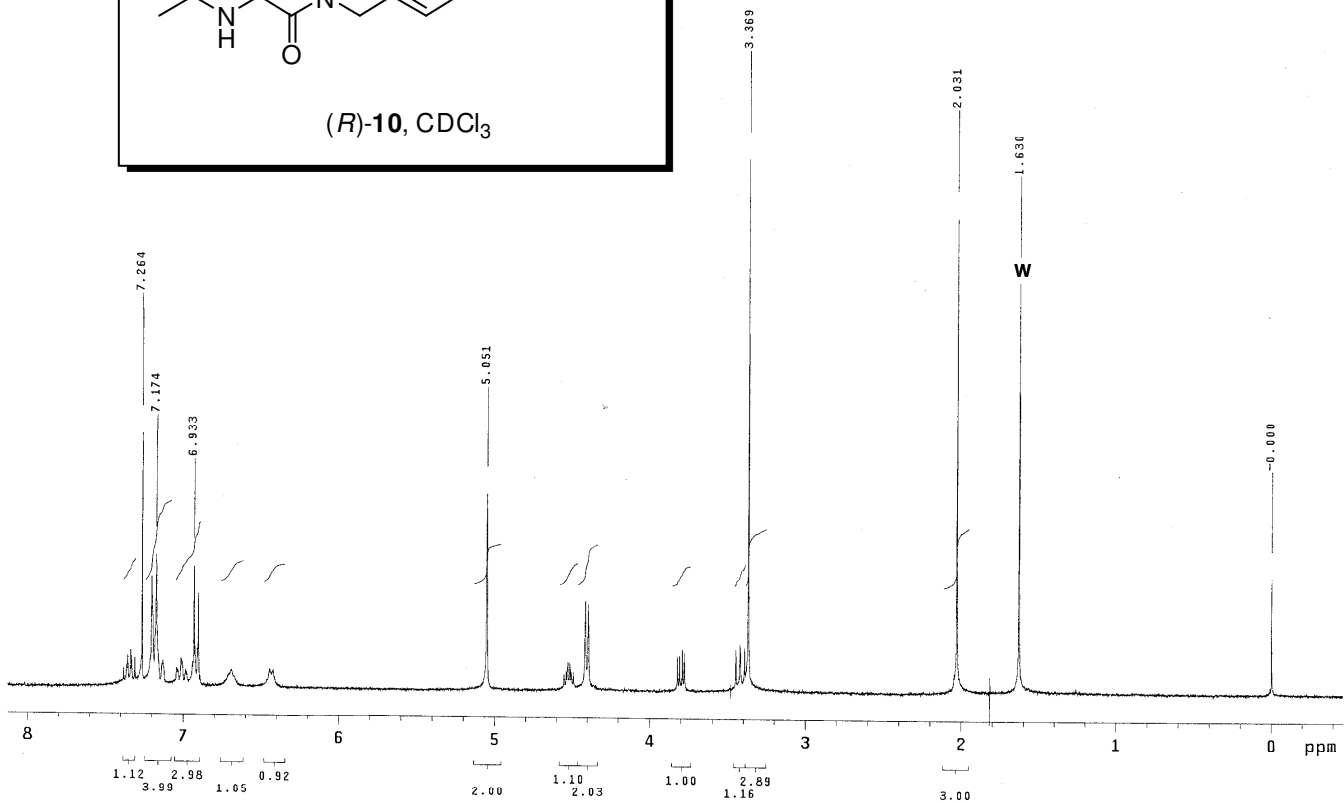
W = Water
 S = Solvent
 I = Impurity



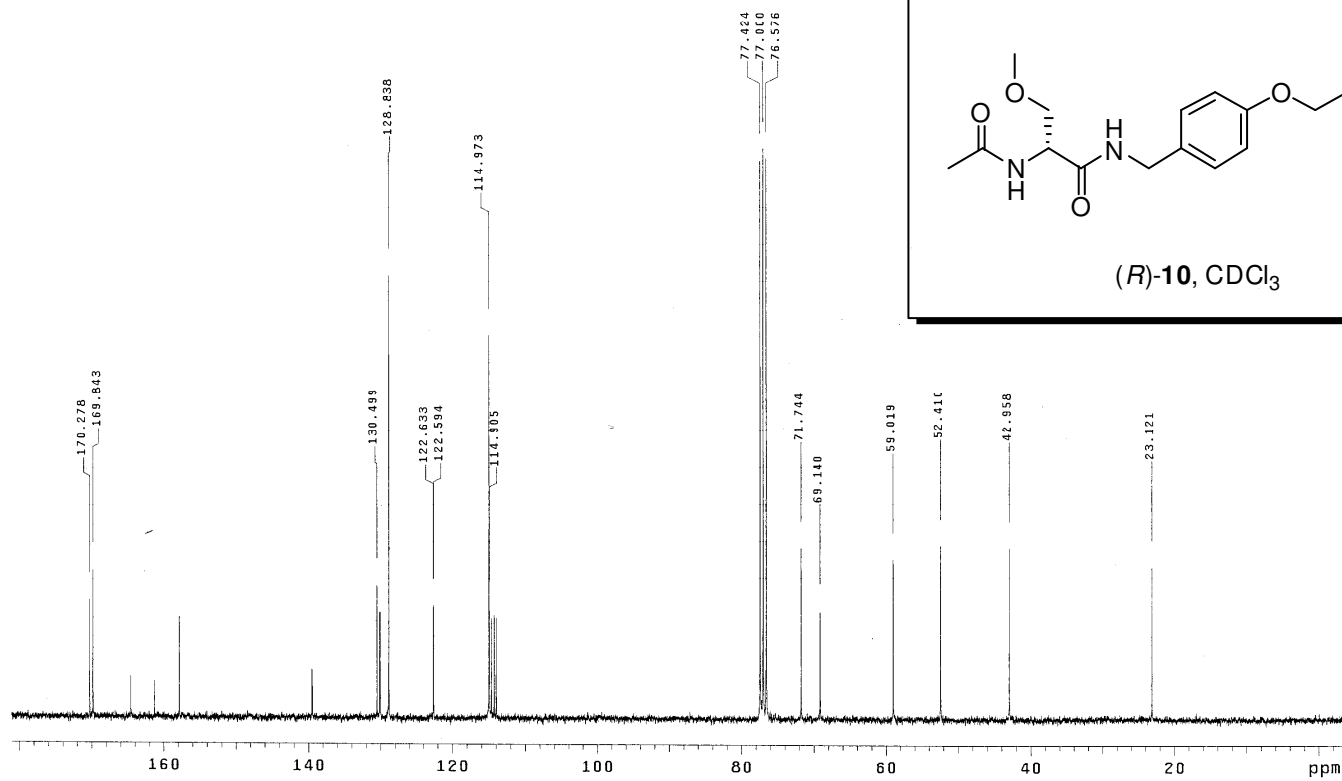
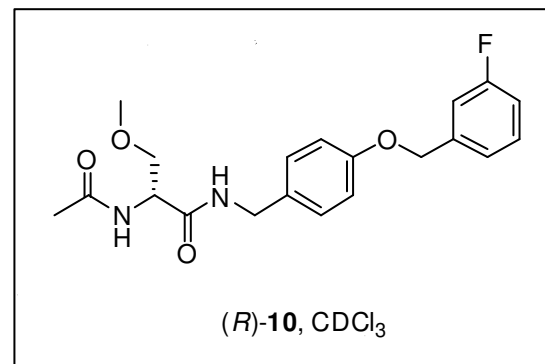


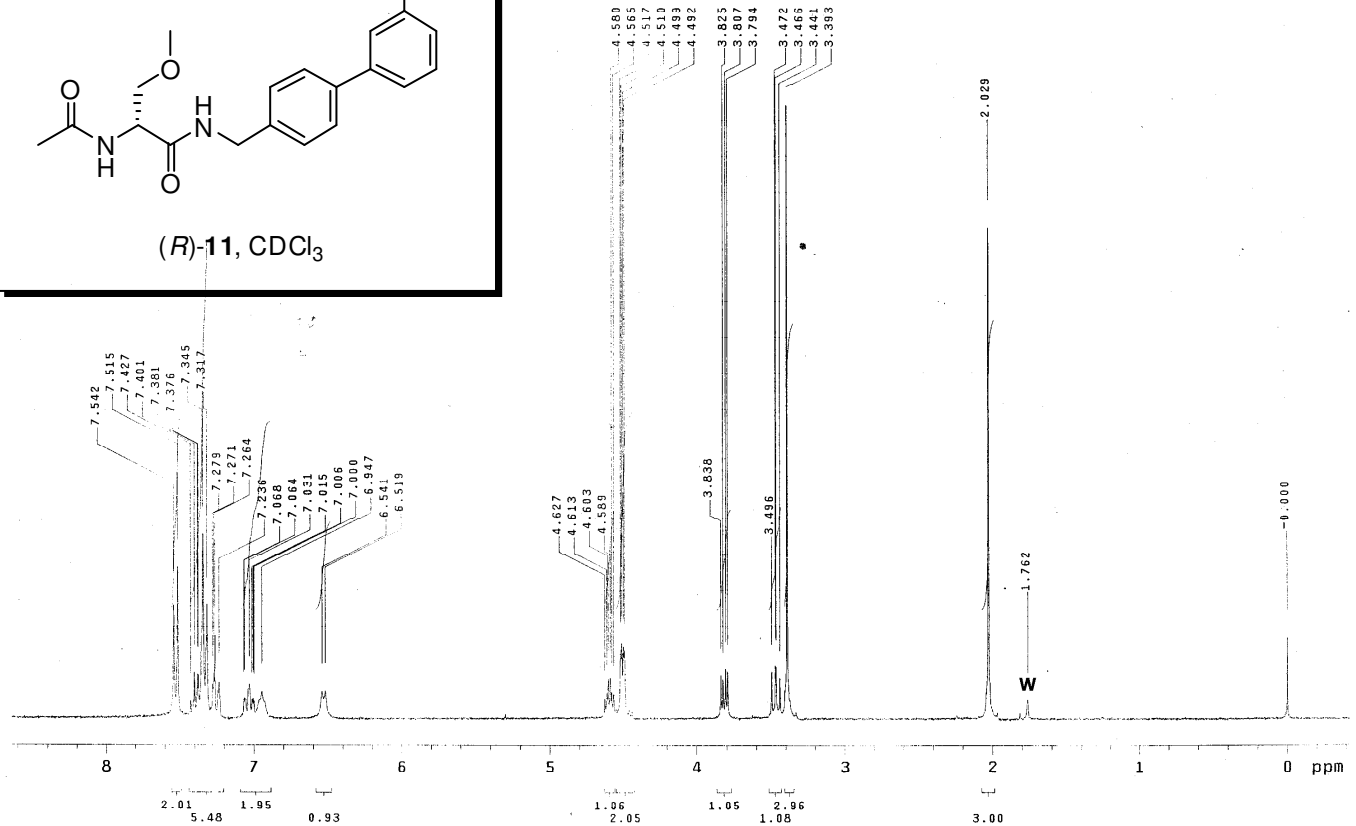
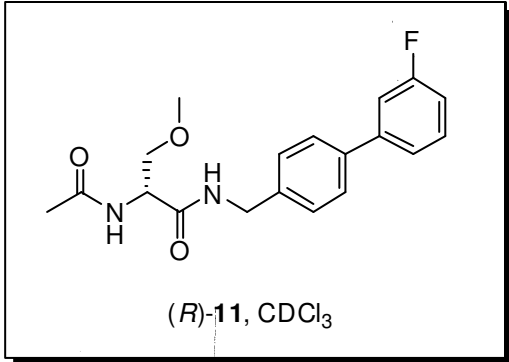


W = Water
S = Solvent
I = Impurity

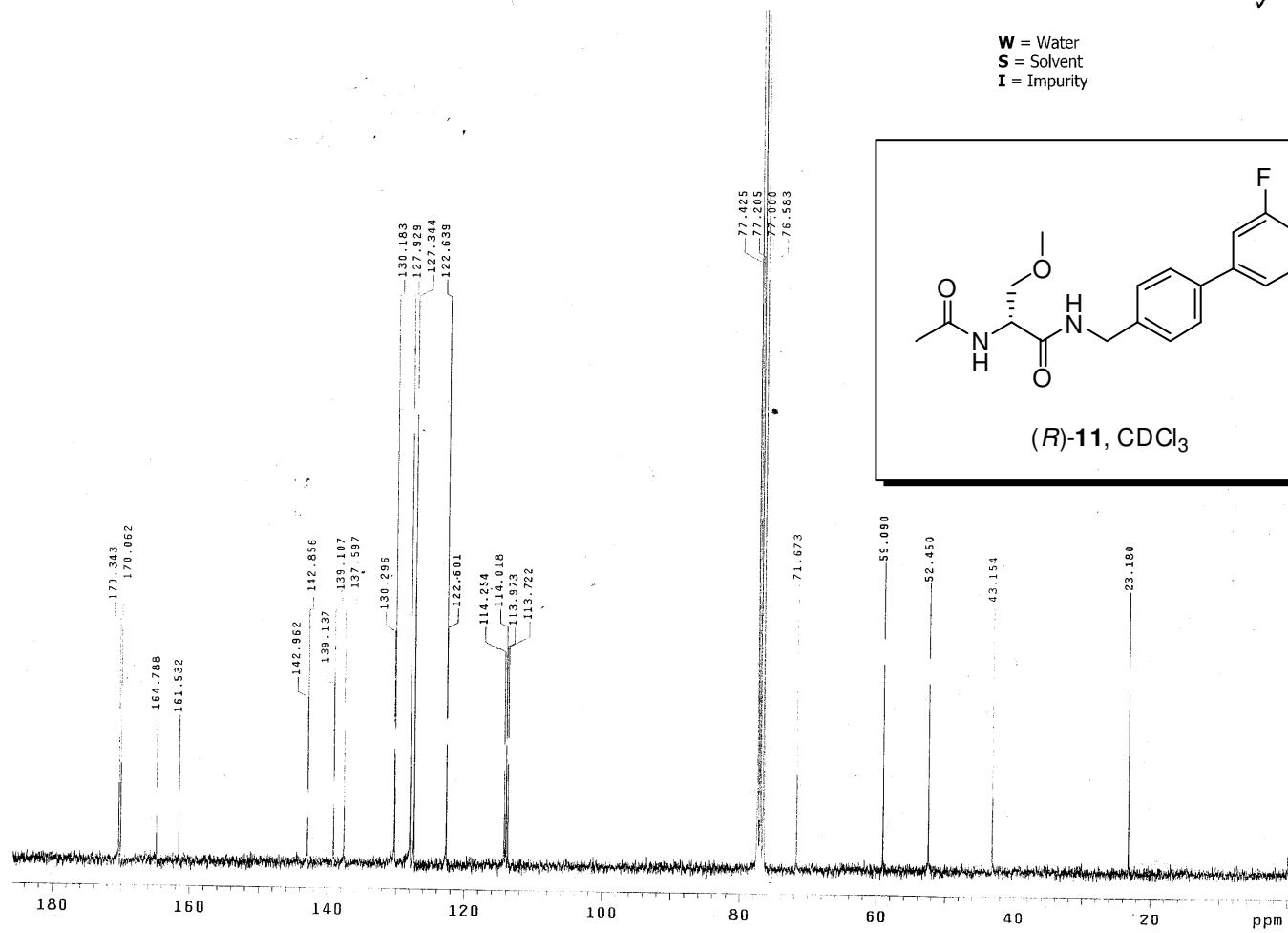


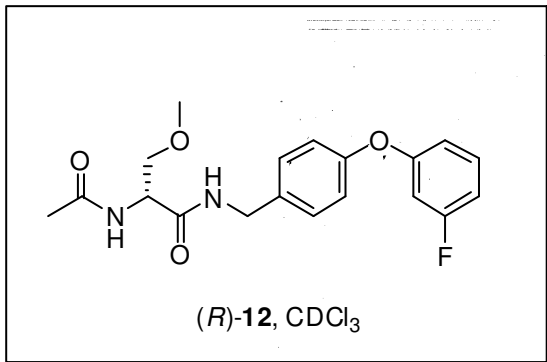
W = Water
S = Solvent
I = Impurity



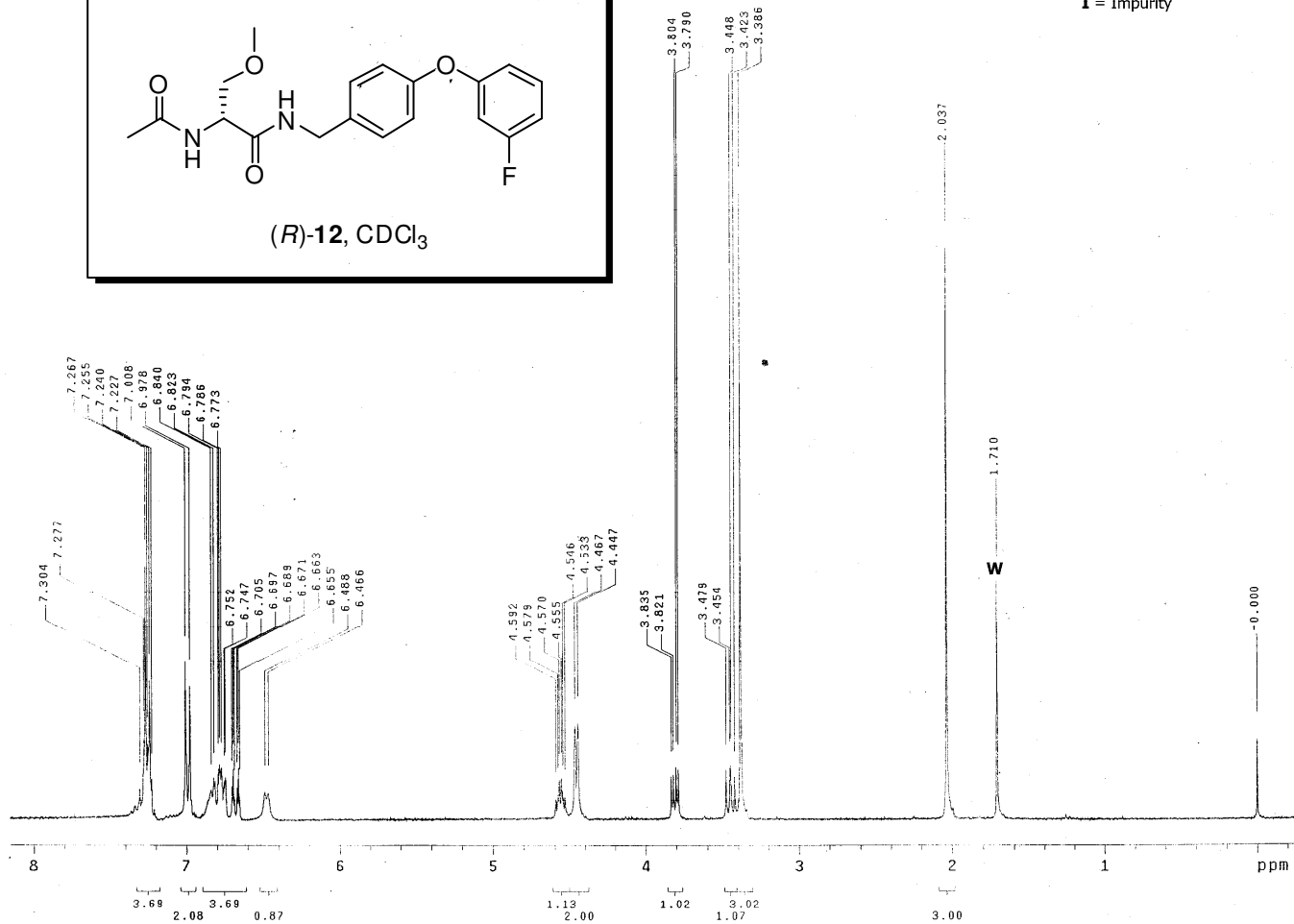


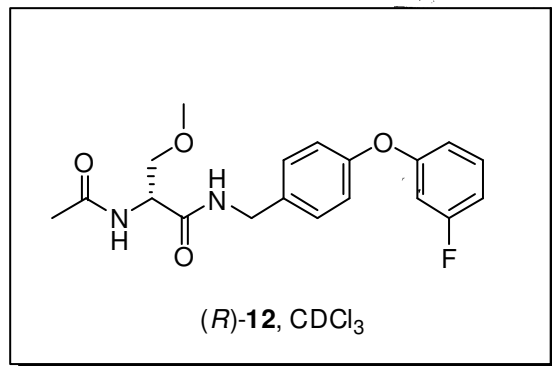
W = Water
 S = Solvent
 I = Impurity



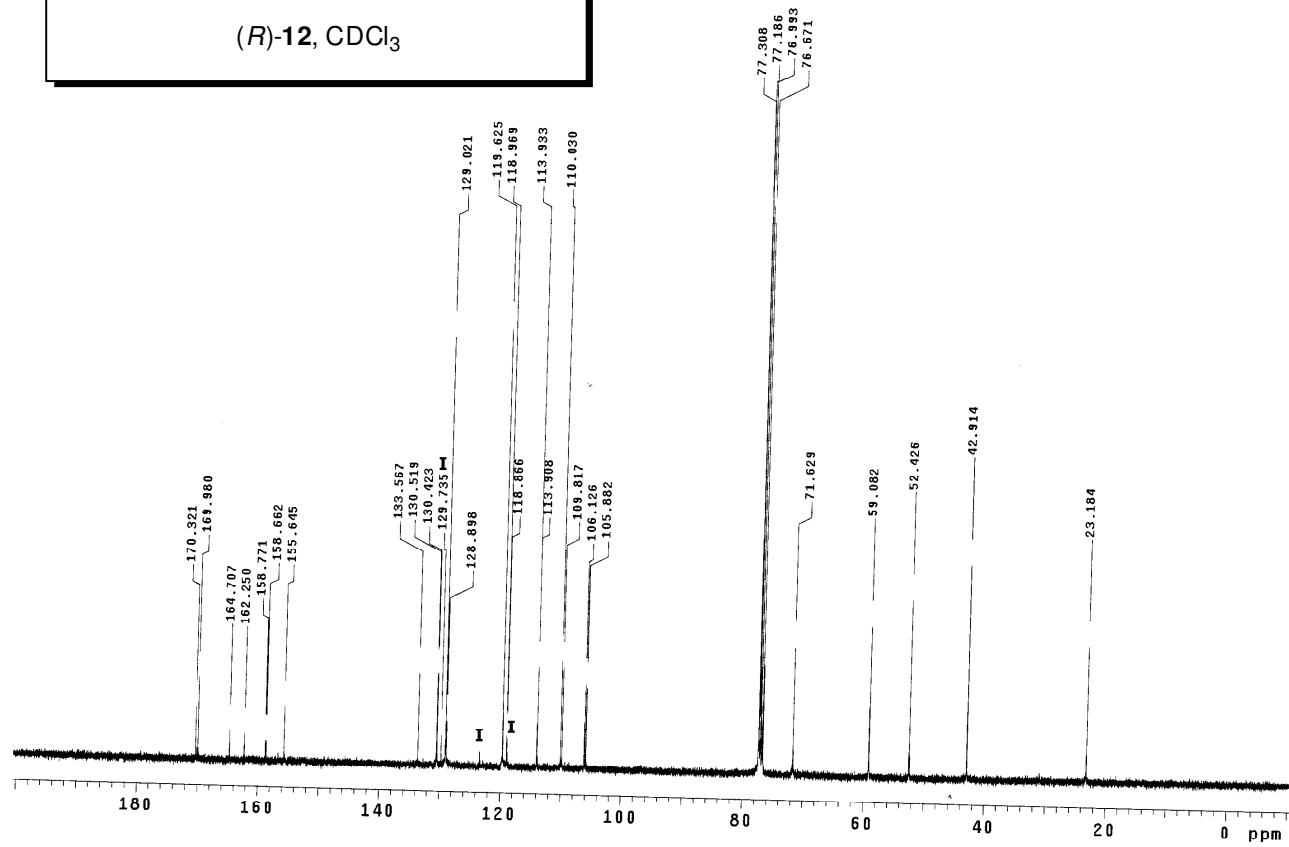


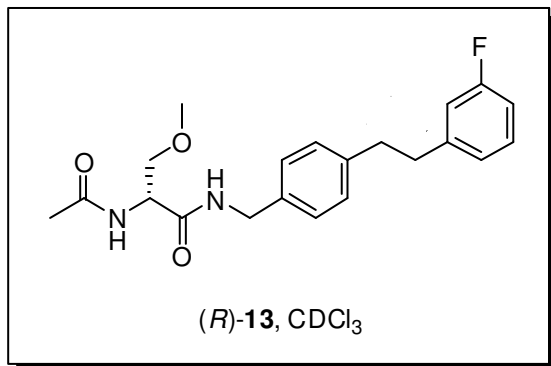
W = Water
 S = Solvent
 I = Impurity



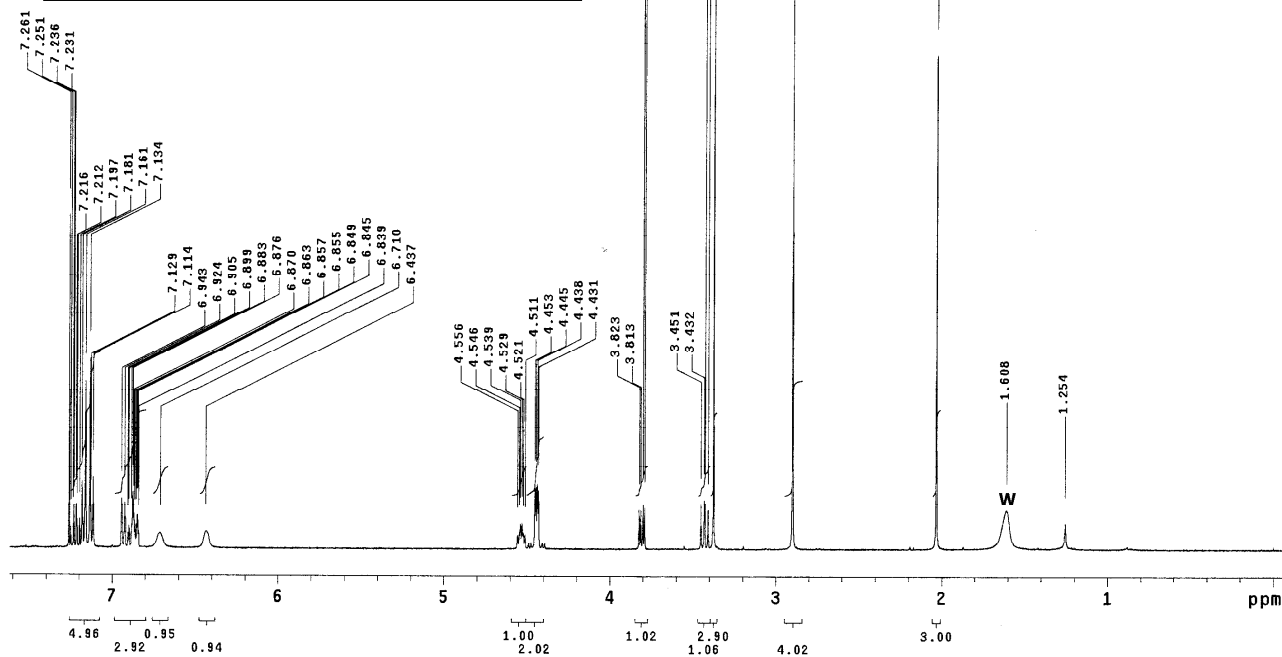


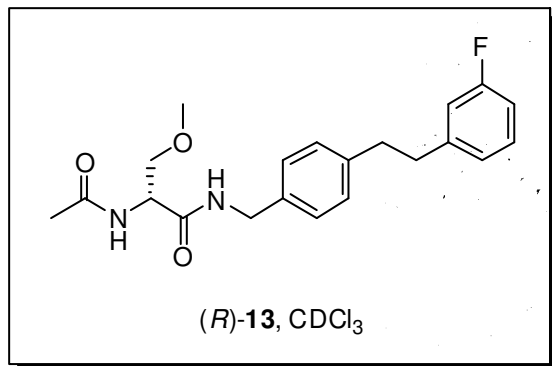
W = Water
 S = Solvent
 I = Impurity



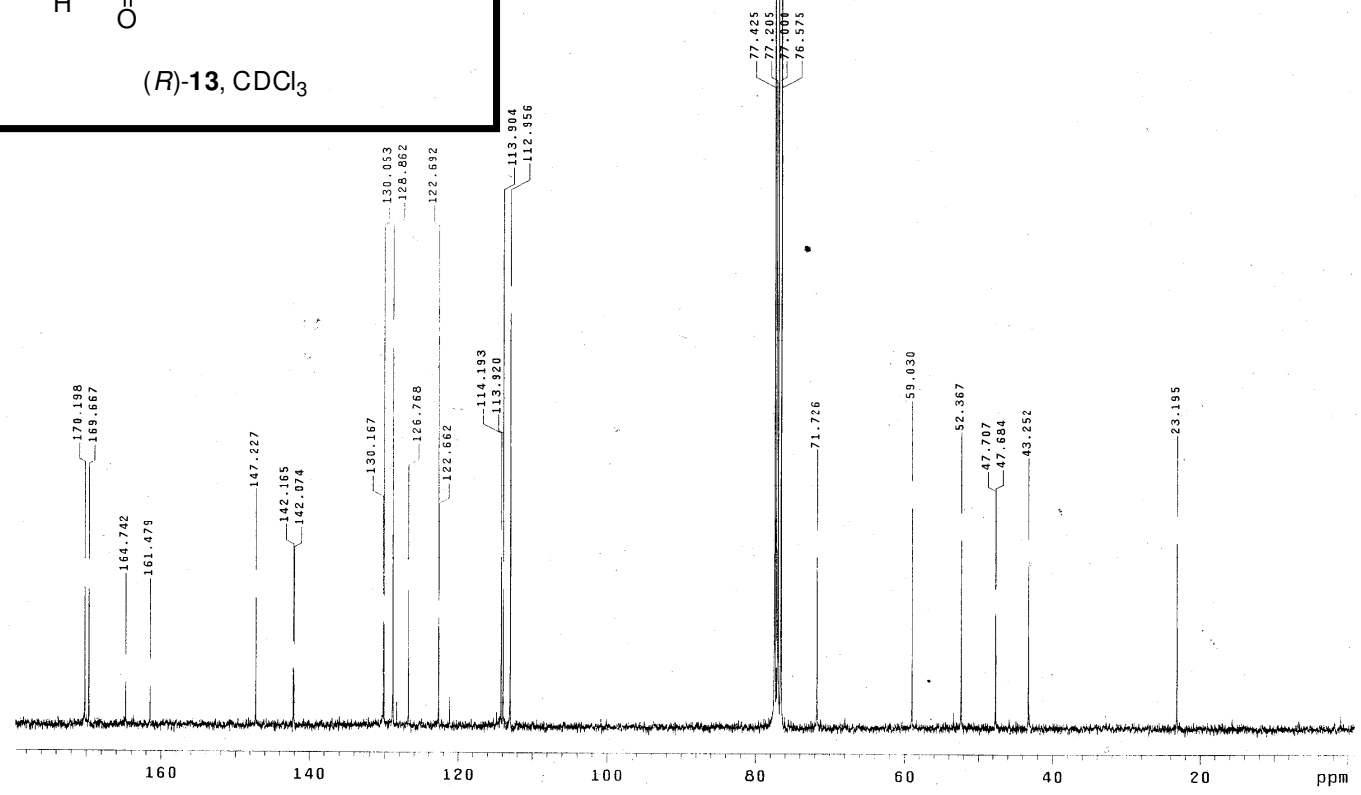


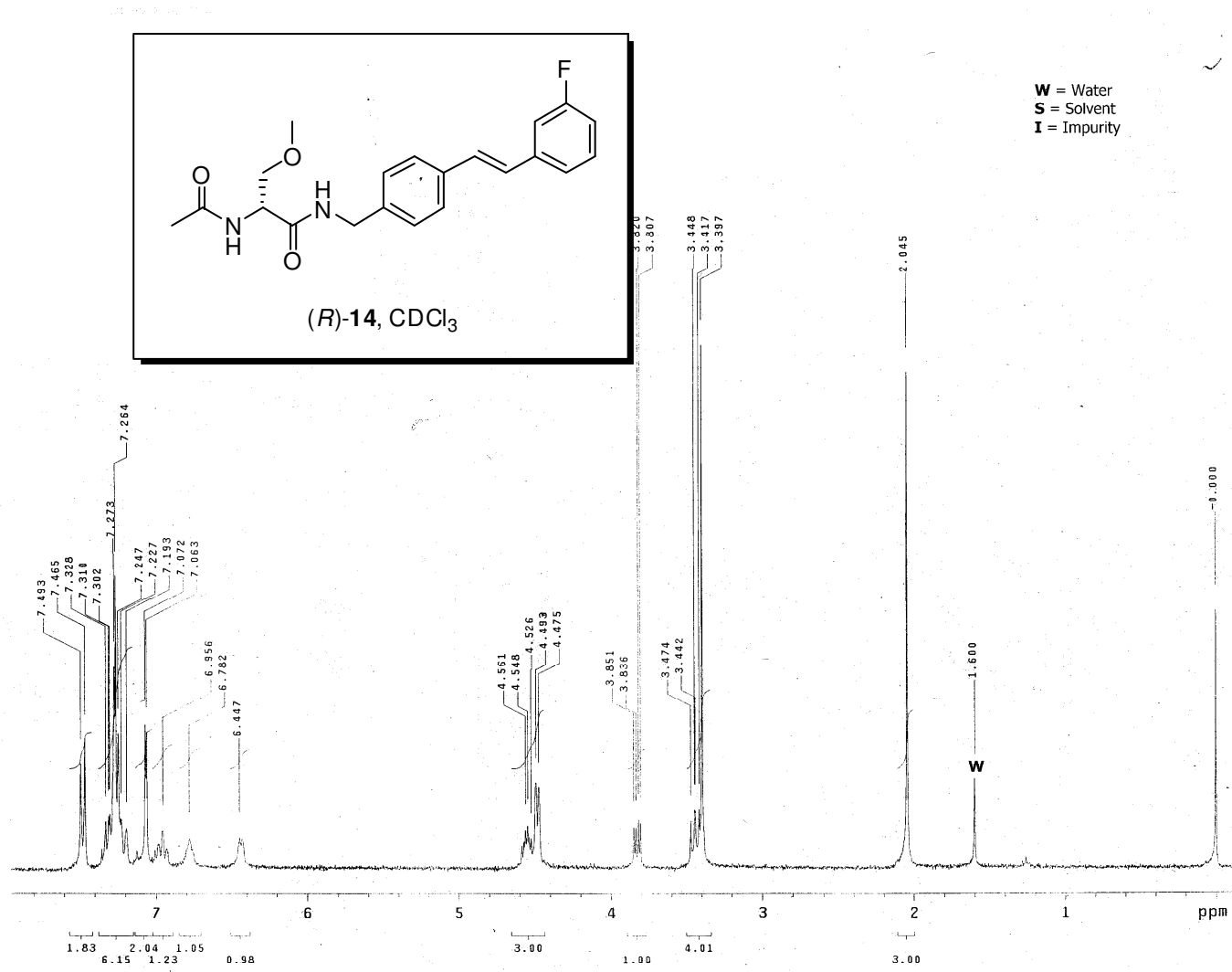
W = Water
S = Solvent
I = Impurity

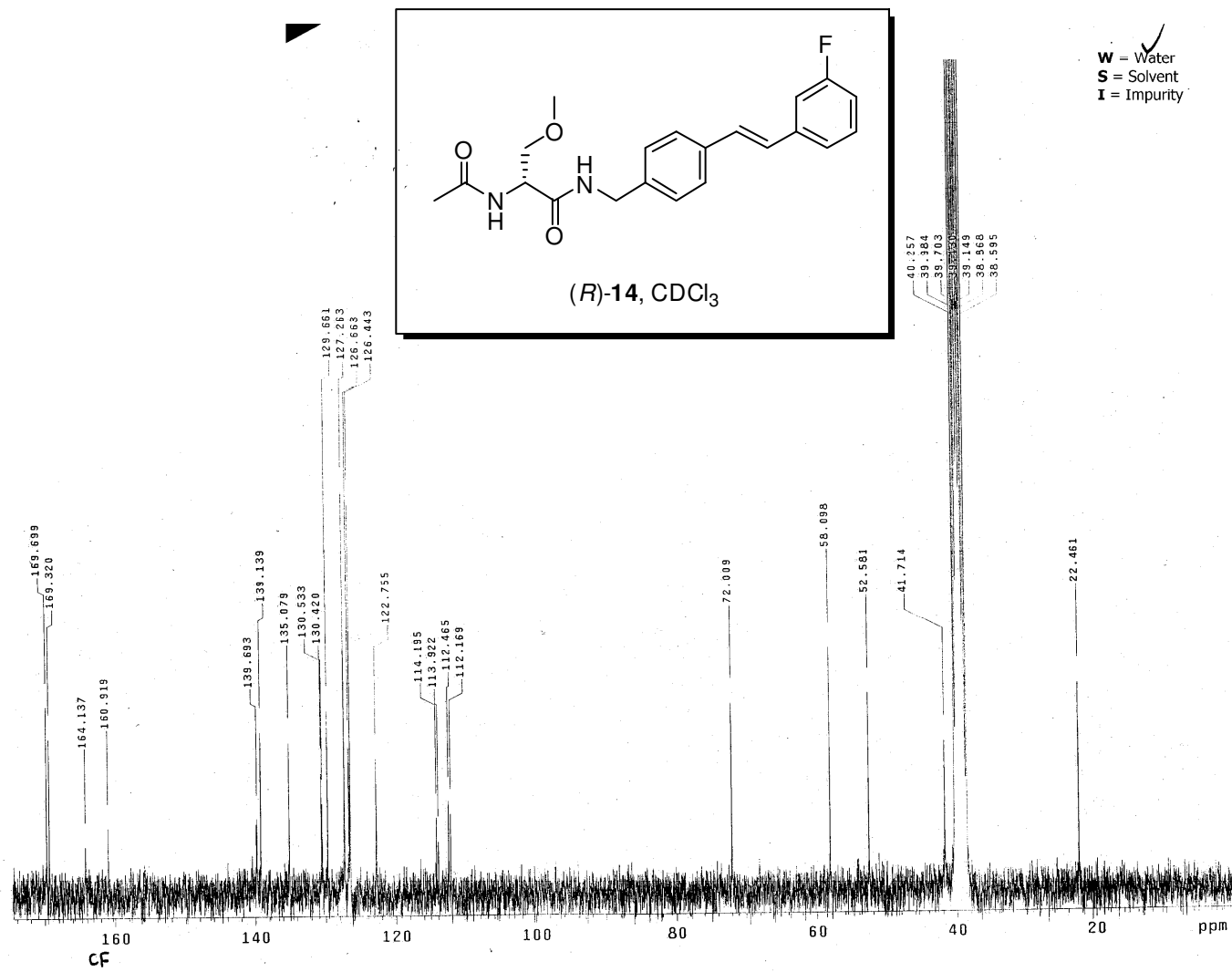


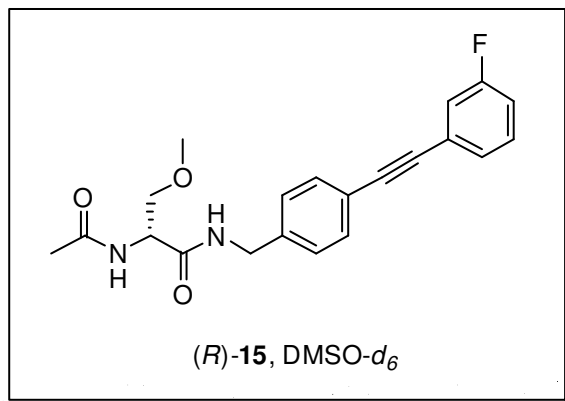


W = Water
 S = Solvent
 I = Impurity

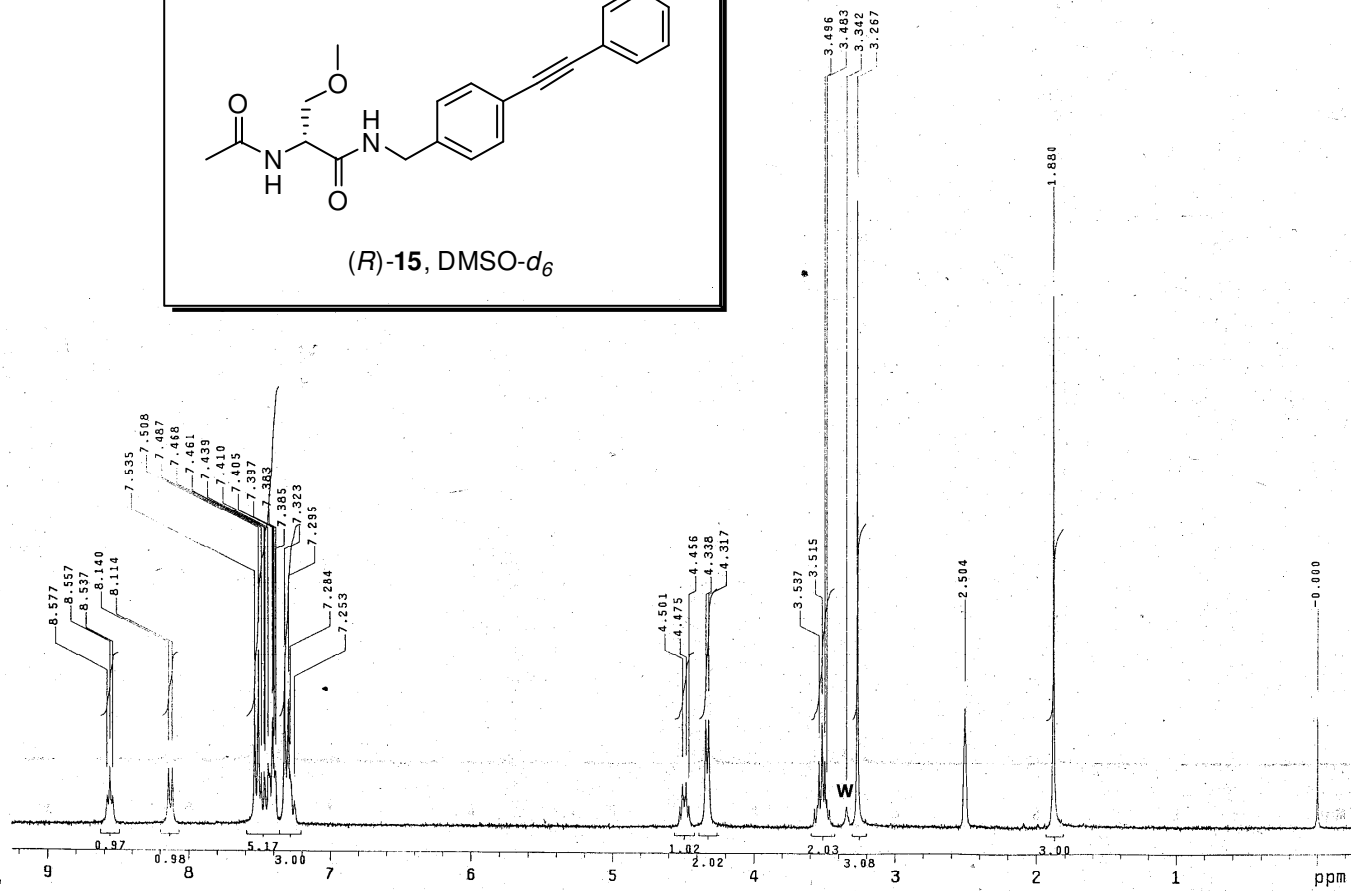


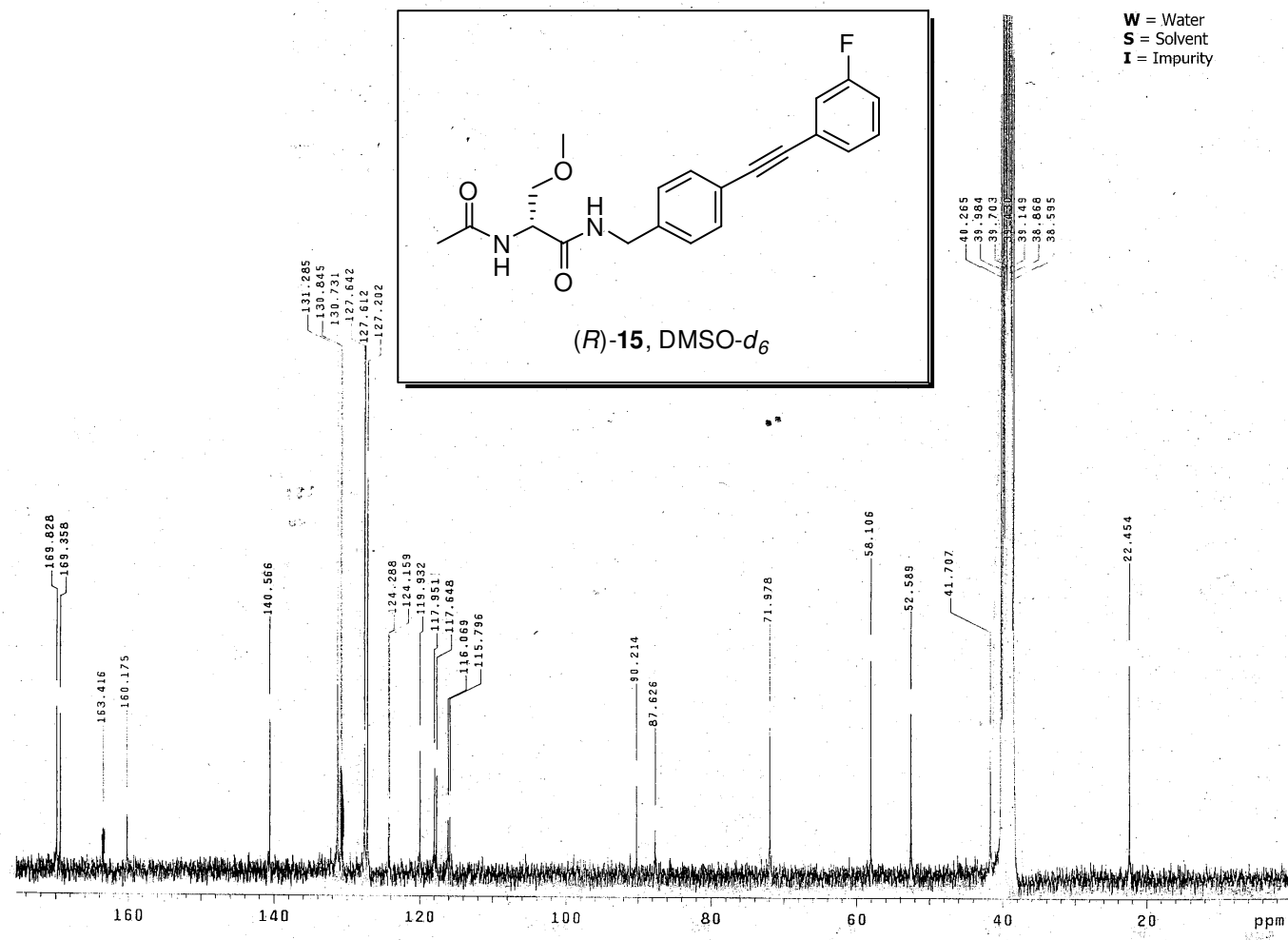


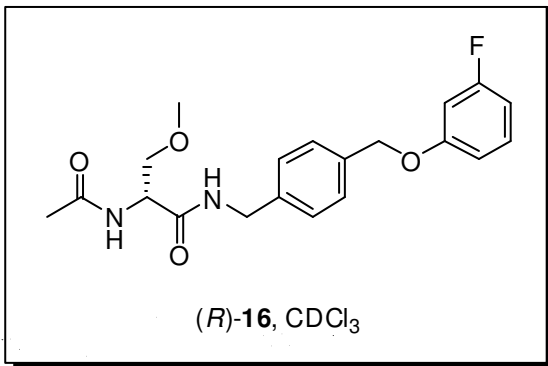




W = Water
 S = Solvent
 I = Impurity

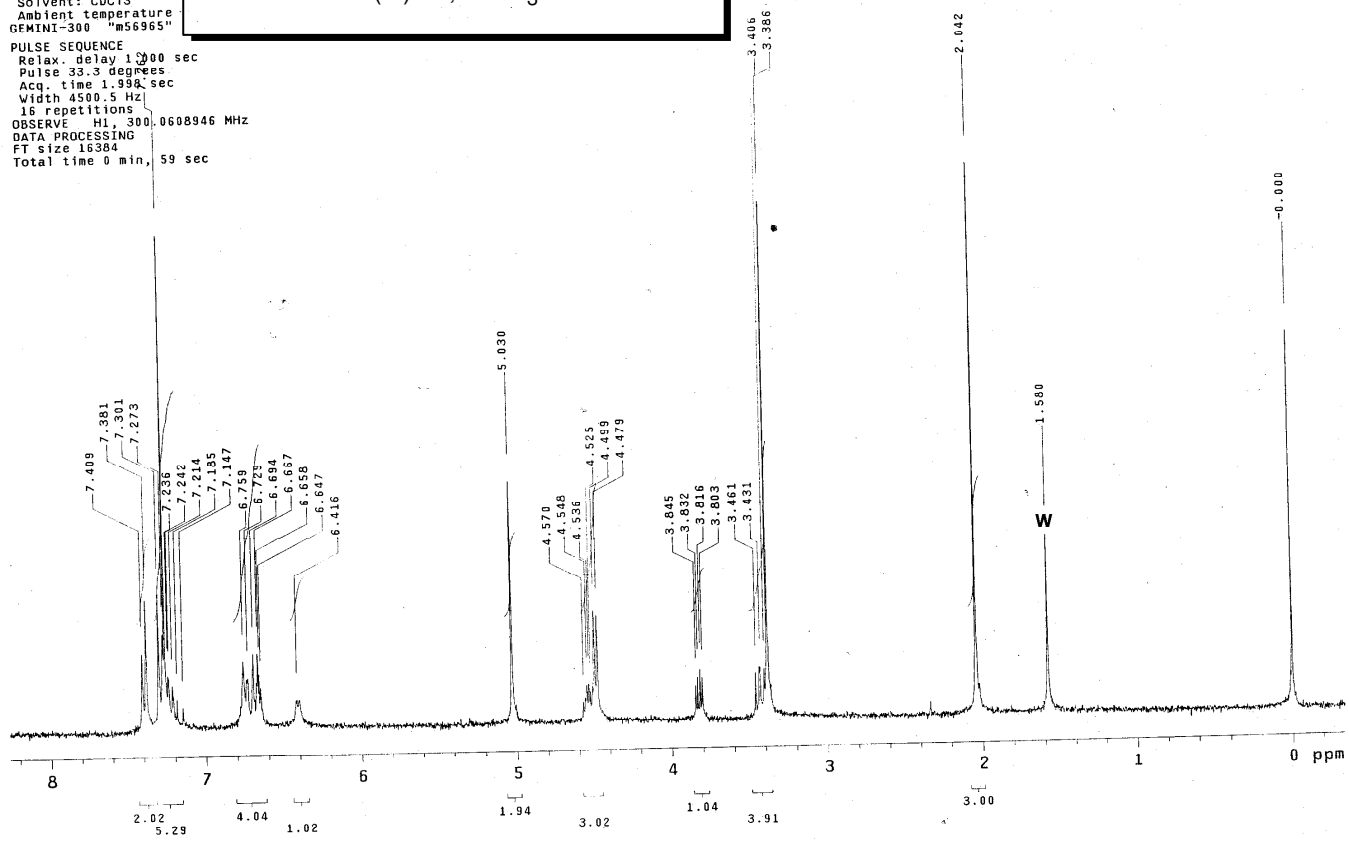


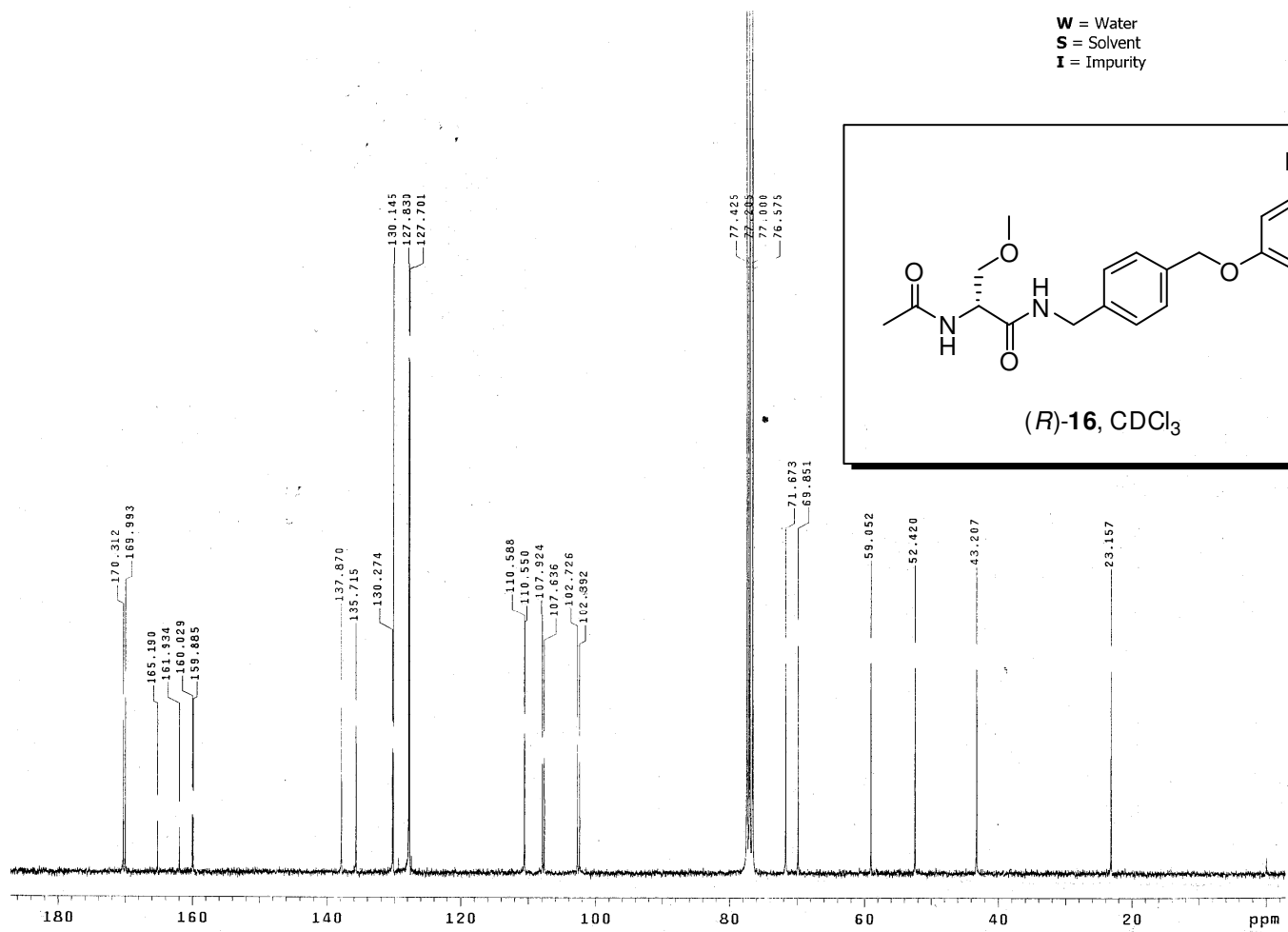


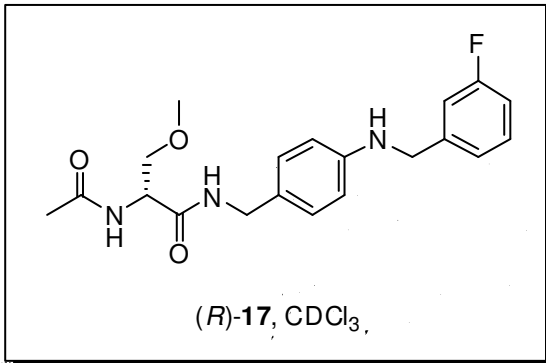


W = Water
 S = Solvent
 I = Impurity

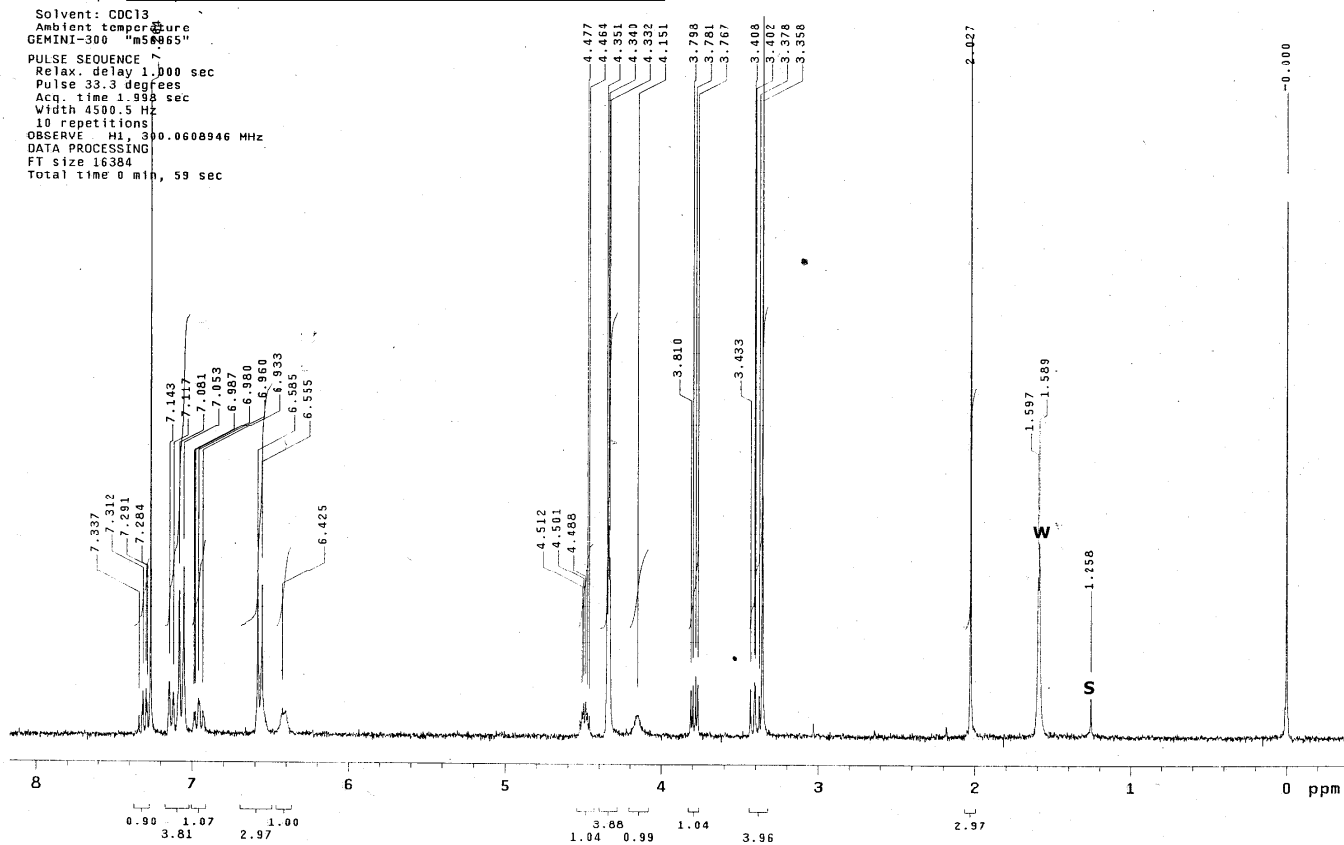
Solvent: CDCl₃
 Ambient temperature
 GEMINI-300 "ms6965"
 PULSE SEQUENCE
 Relax. delay 1.000 sec
 Pulse 33.3 degrees
 Acq. time 1.998 sec
 Width 4500.5 Hz
 16 repetitions
 OBSERVE H1, 300.0608946 MHz
 DATA PROCESSING
 FT size 16384
 Total time 0 min, 59 sec

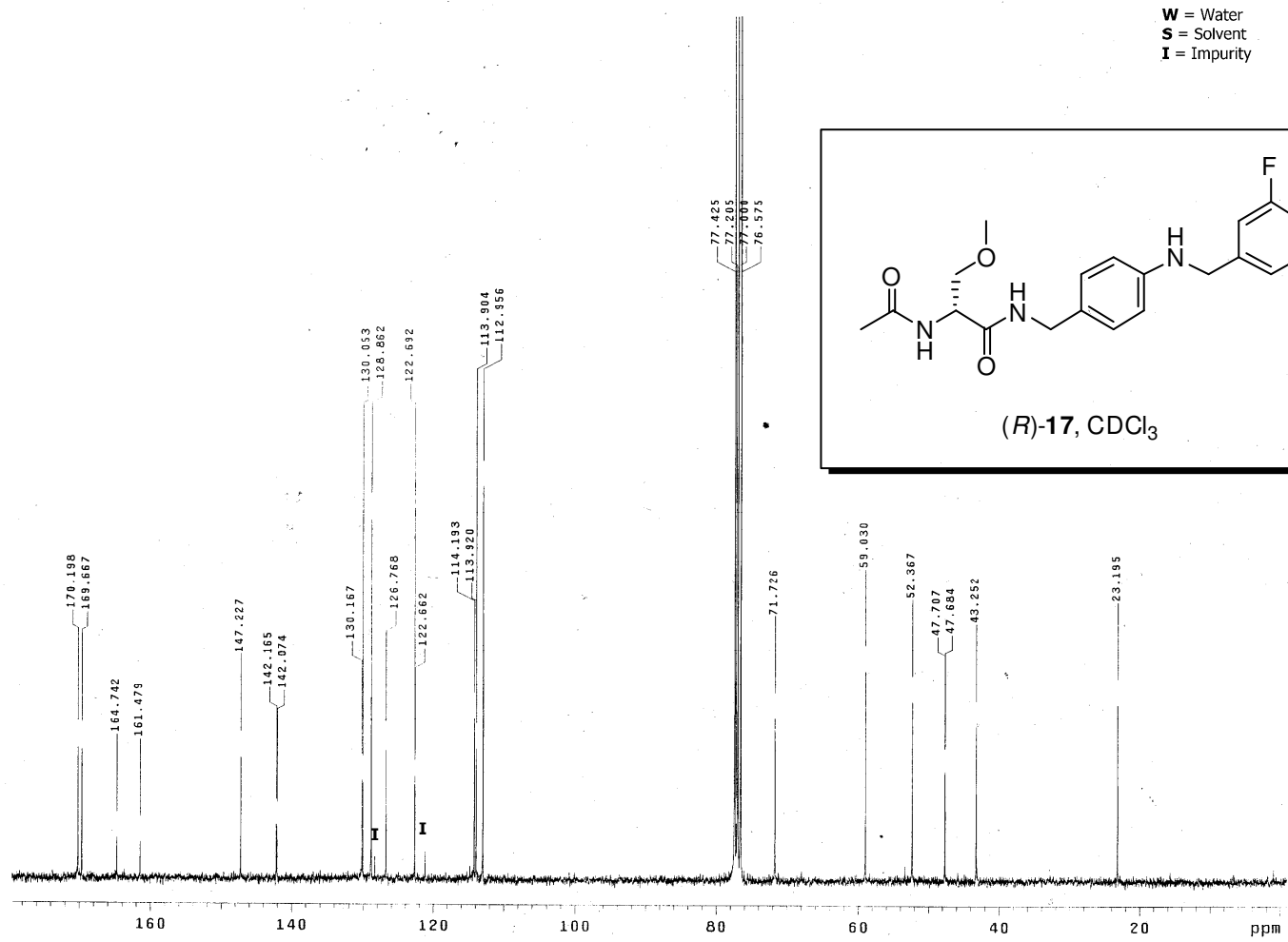


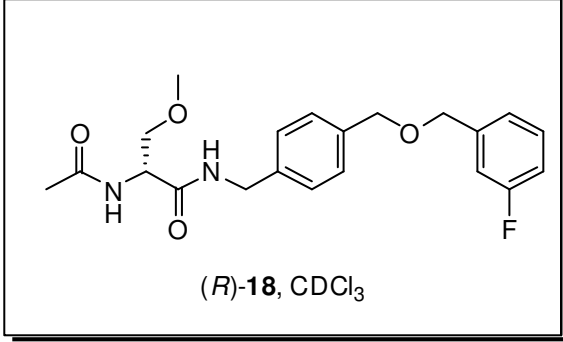




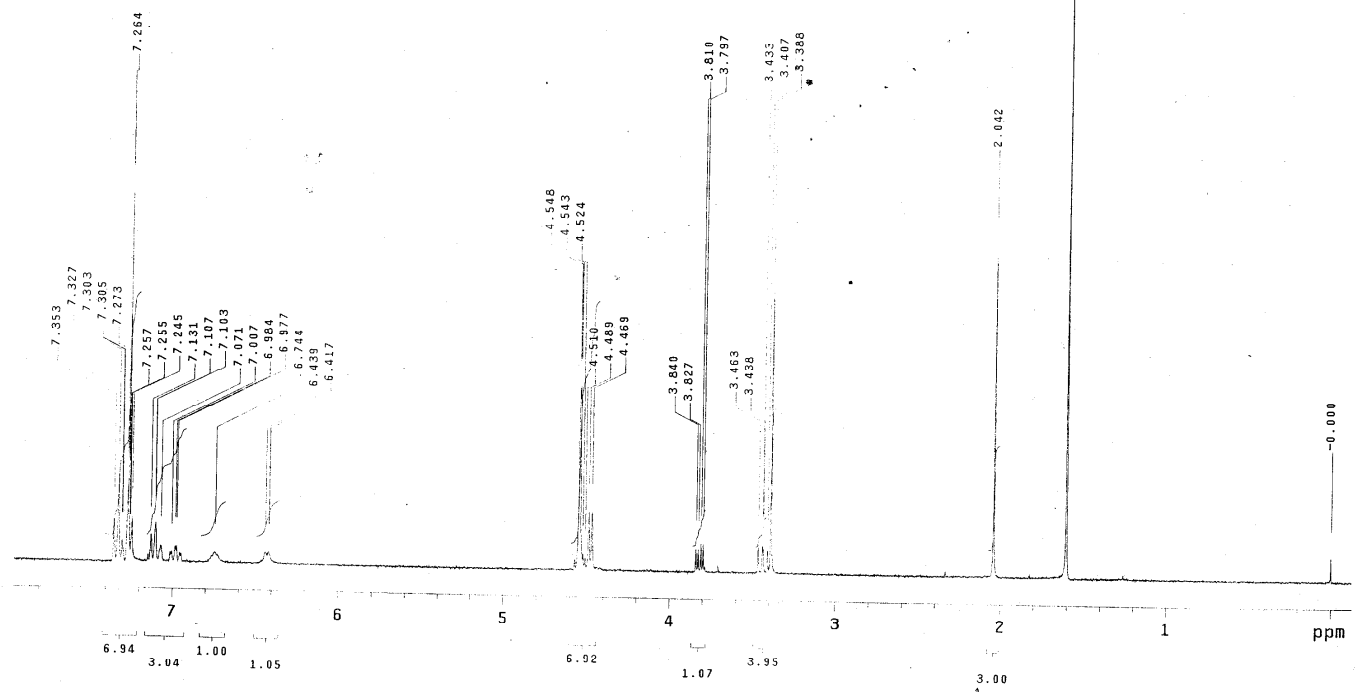
W = Water
 S = Solvent
 I = Impurity

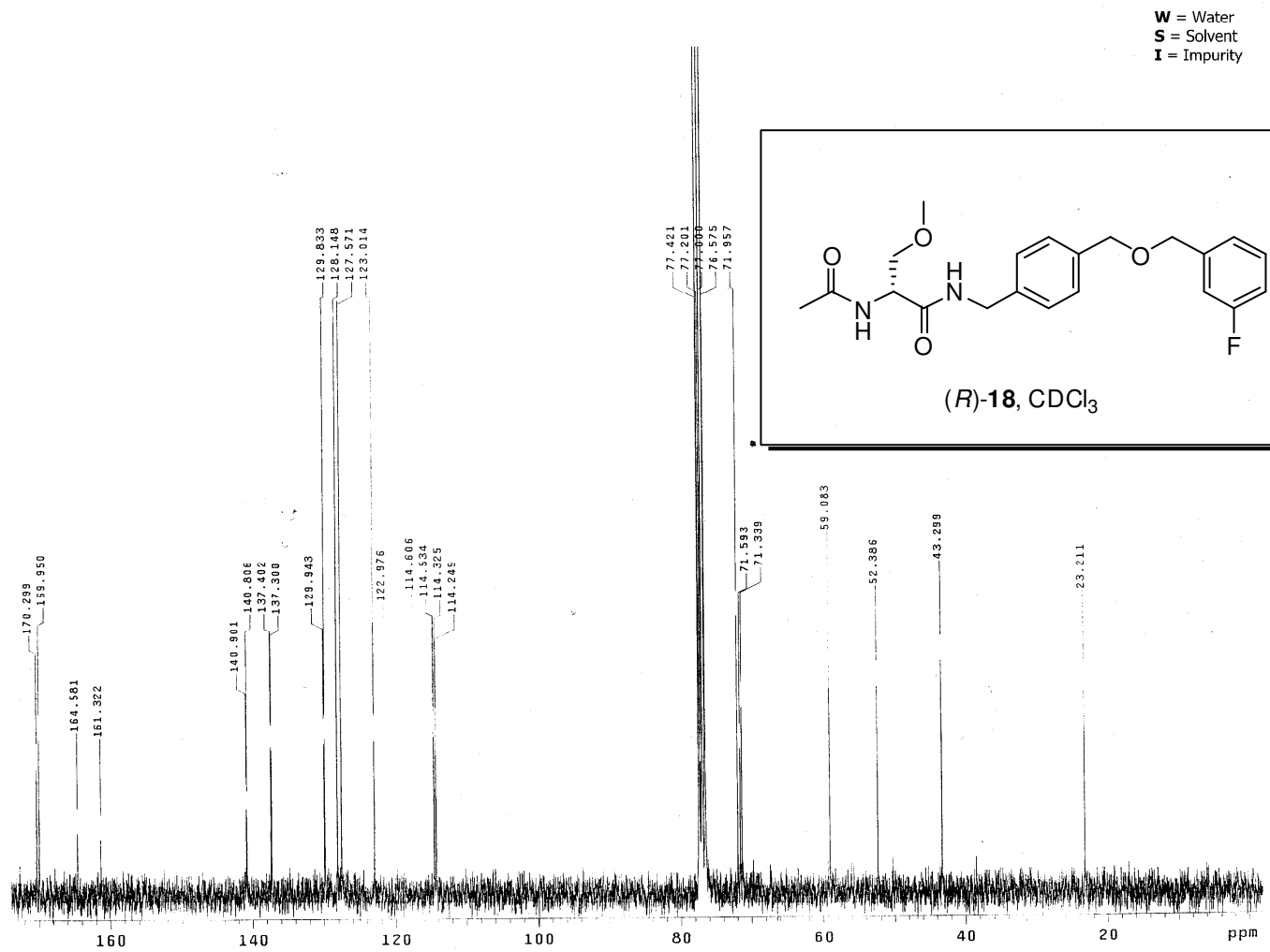




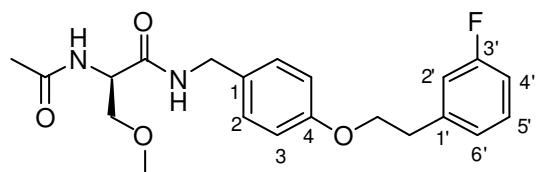


W = Water
 S = Solvent
 I = Impurity

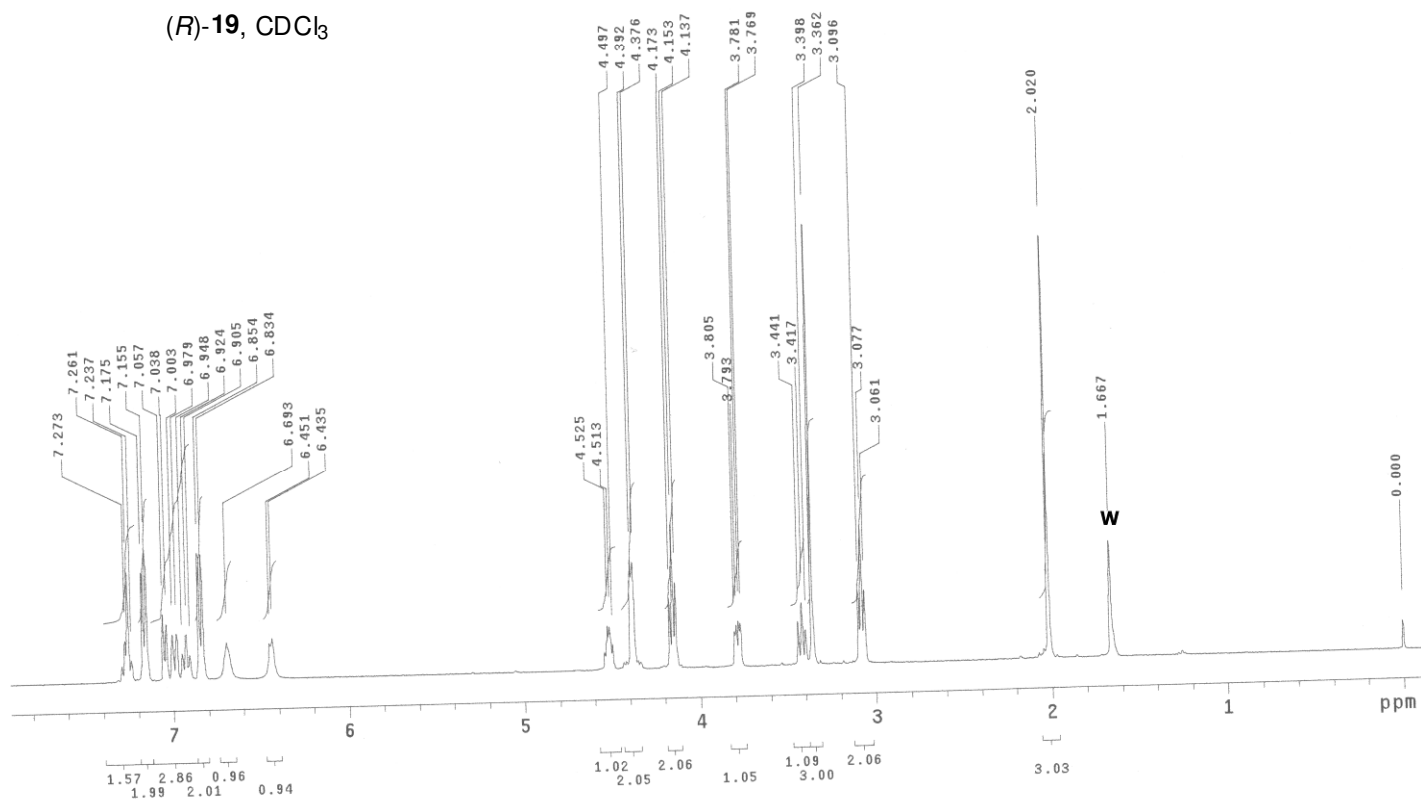




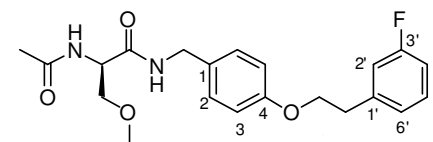
W = Water
I = Impurity
S = Solvent



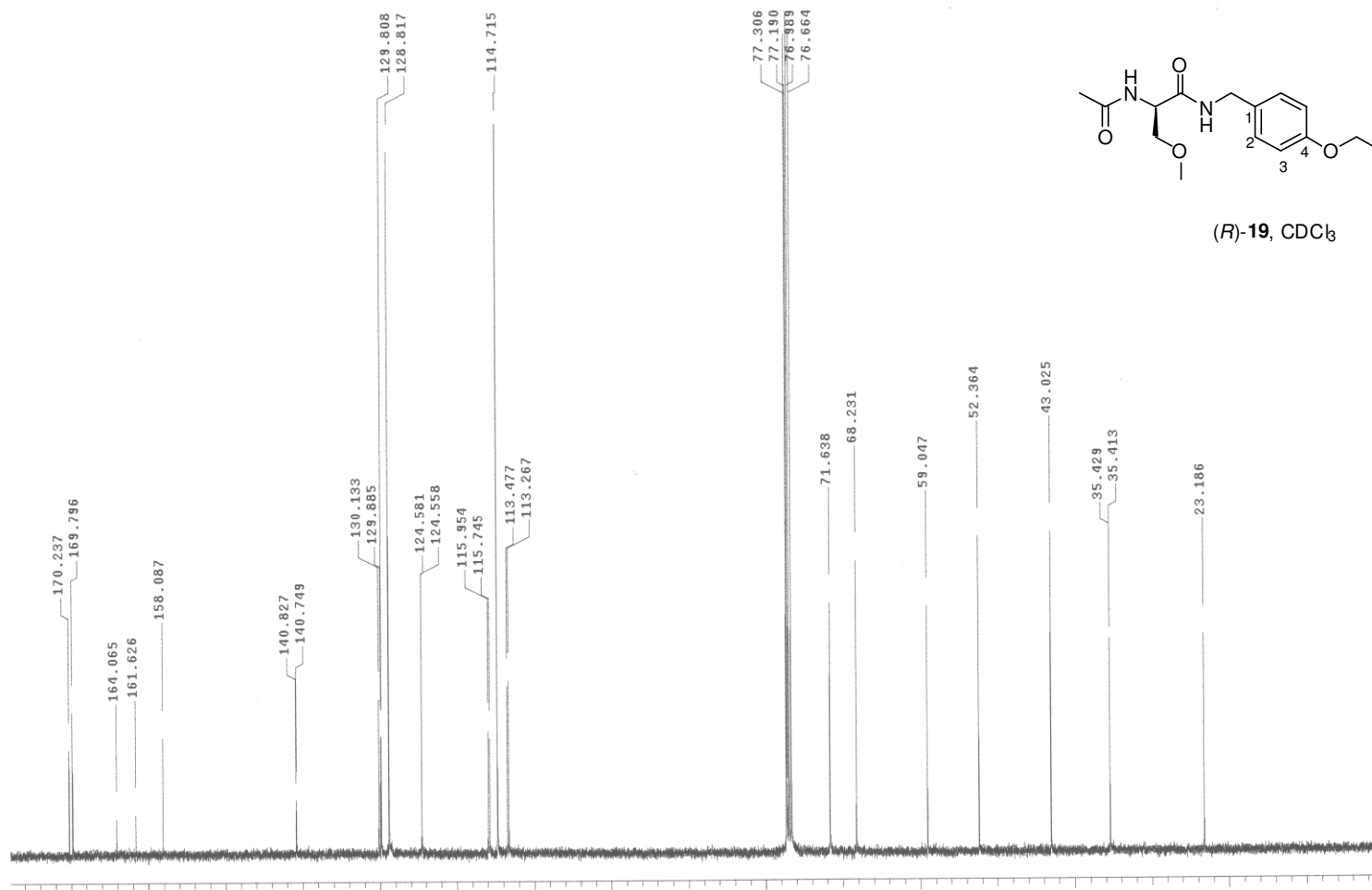
(R)-19, CDCl₃

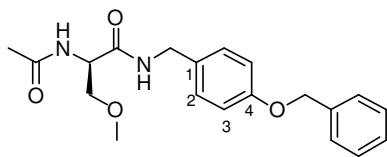


W = Water
I = Impurity
S = Solvent



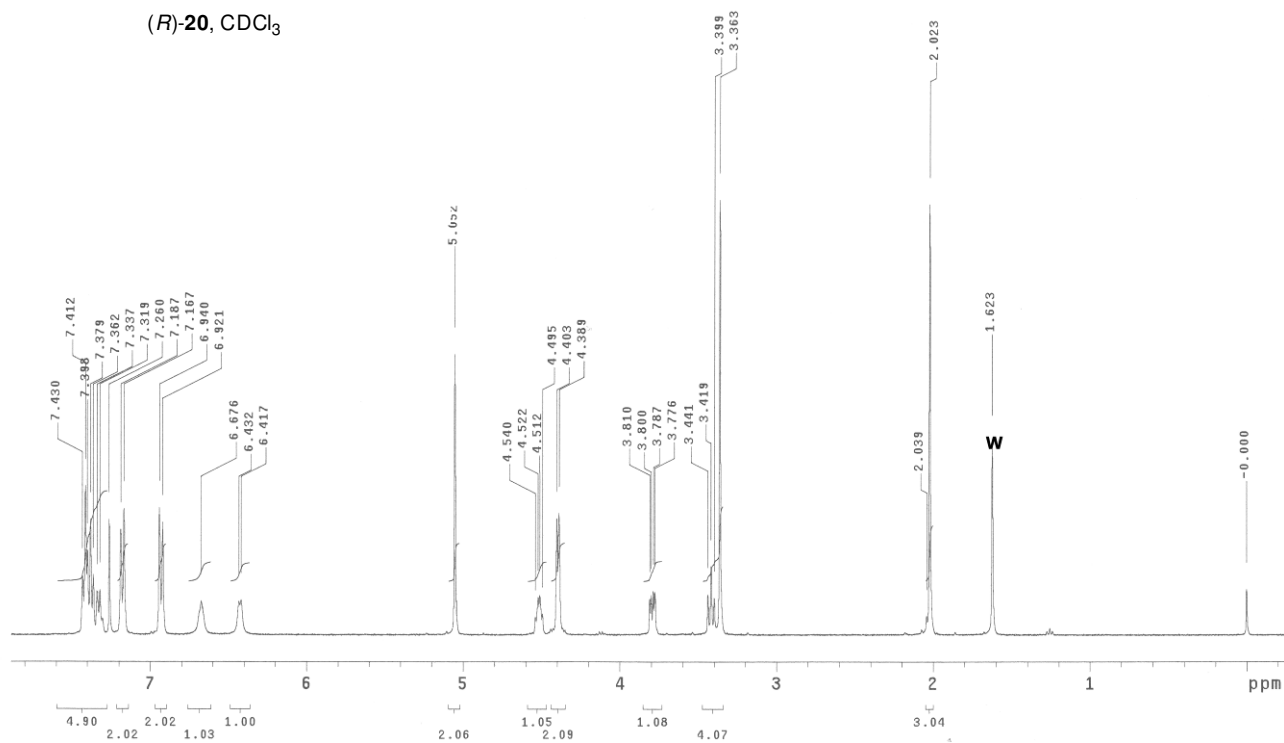
(R)-19, CDC_b

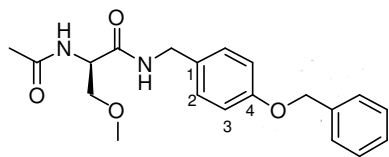




(*R*)-20, CDCl₃

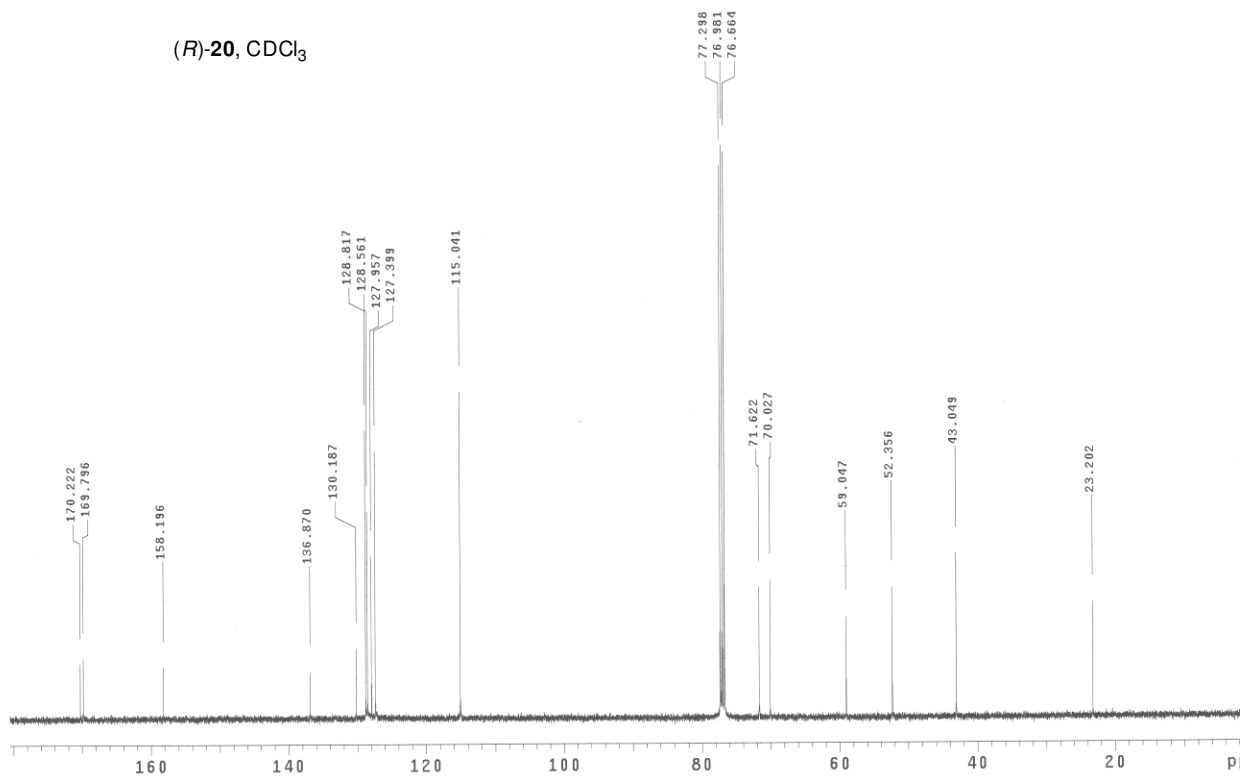
W = Water
 I = Impurity
 S = Solvent



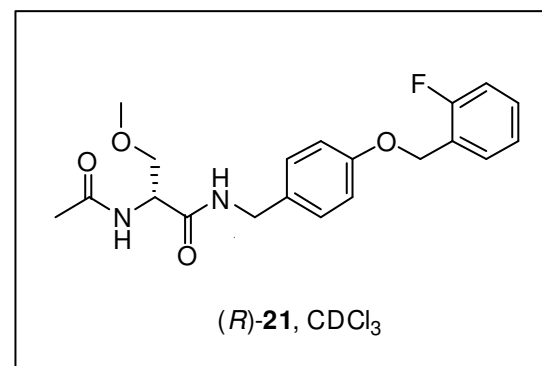
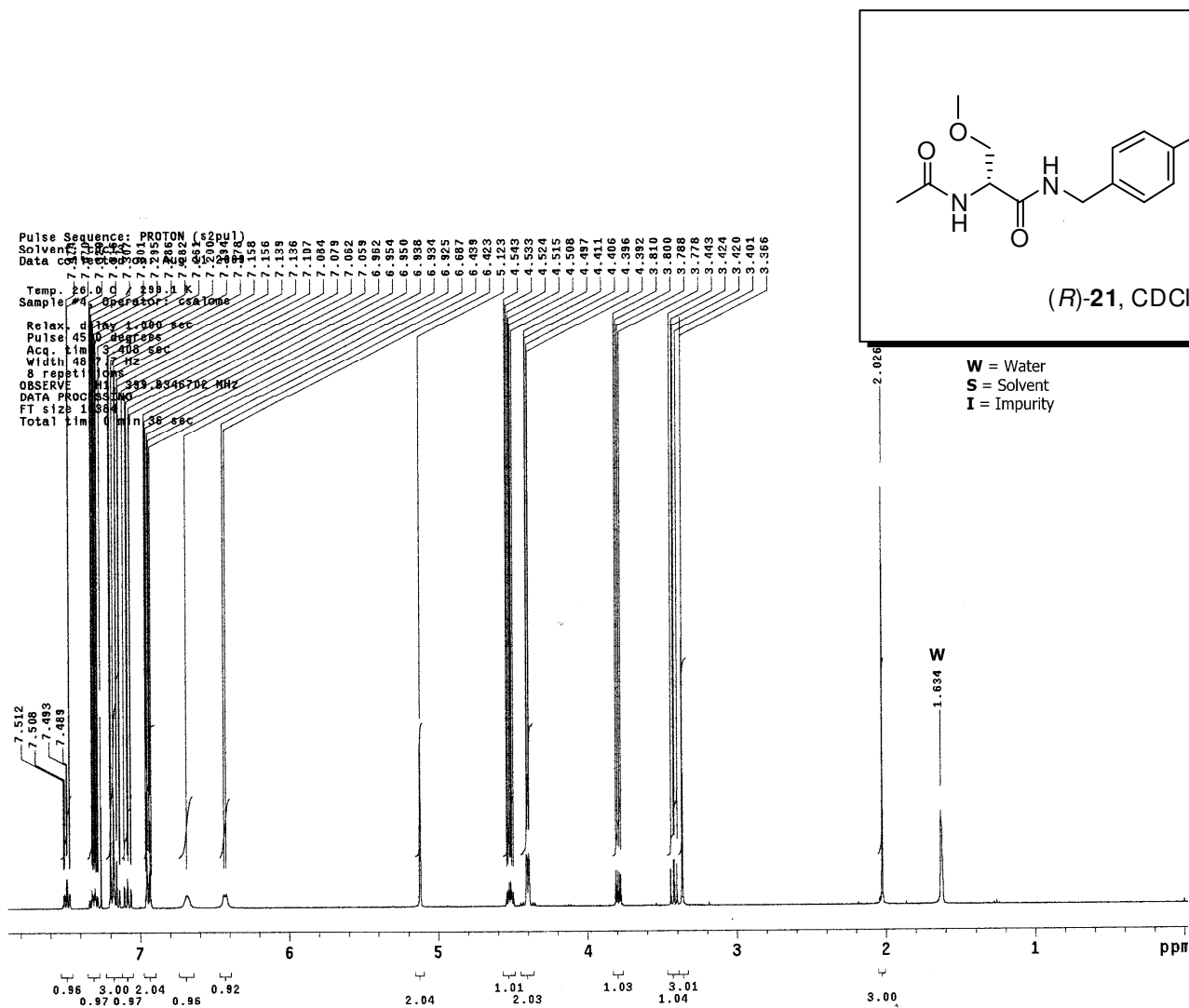


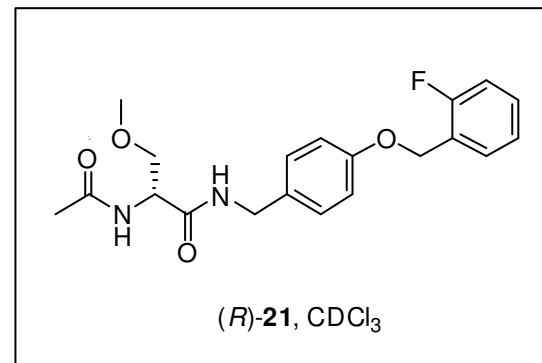
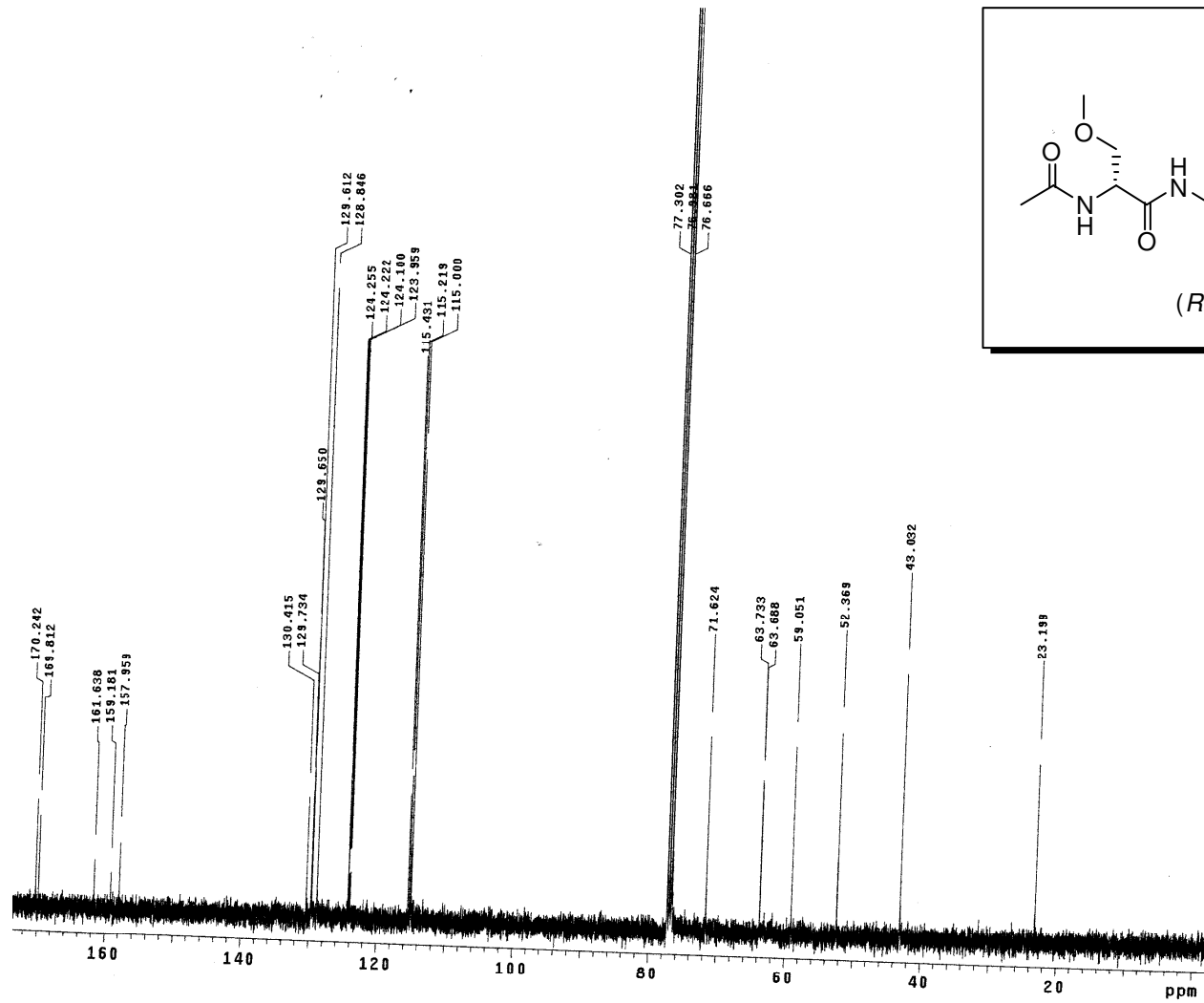
(R)-20, CDCl₃

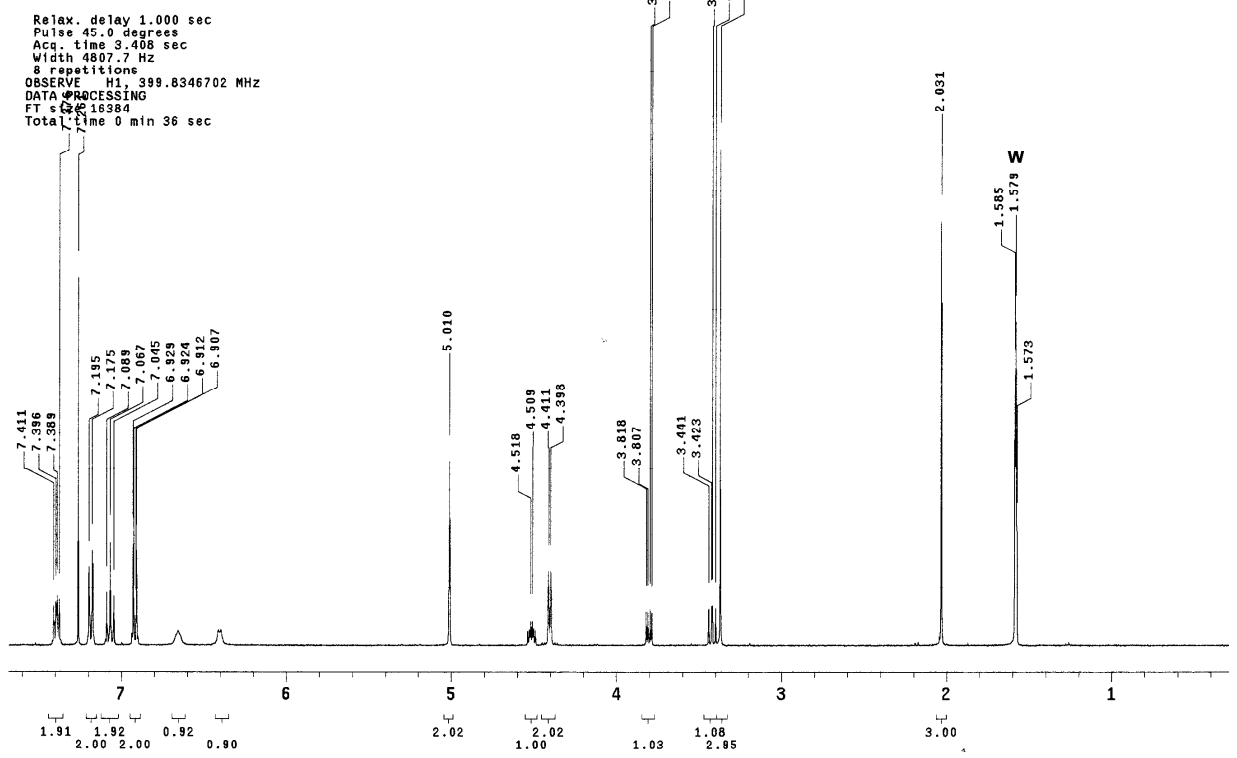
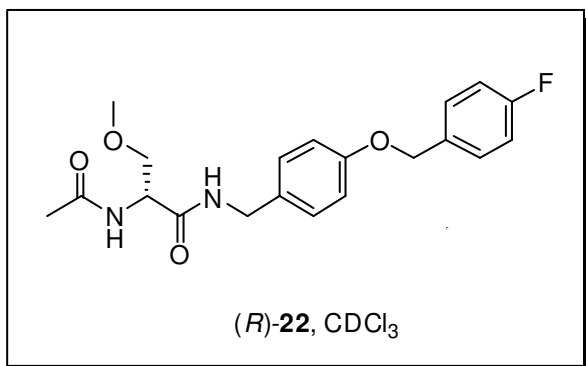
W = Water
I = Impurity
S = Solvent



Pulse Sequence: PROTON (s2pu1)
 Solvent: CDCl3
 Data collection: 13C
 Temp: 29.0 °C
 Sample #4 Operator: csalome
 Relax. delay: 1.000 sec
 Pulse: 45.0 degrees
 Acq. time: 3.408 sec
 Width: 4877.712
 8 repetitions
 OBSERVE: H1 299.8346702 MHz
 DATA PROCESSING: No
 FT size: 1.384
 Total time: 0 min 36 sec

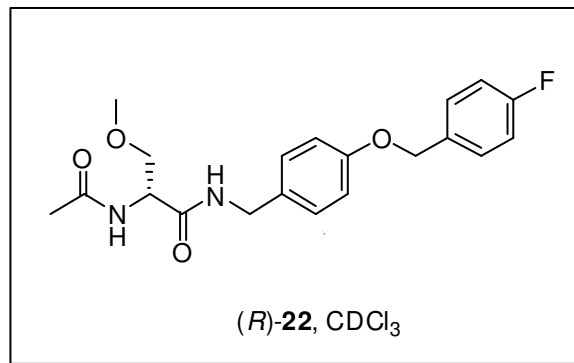
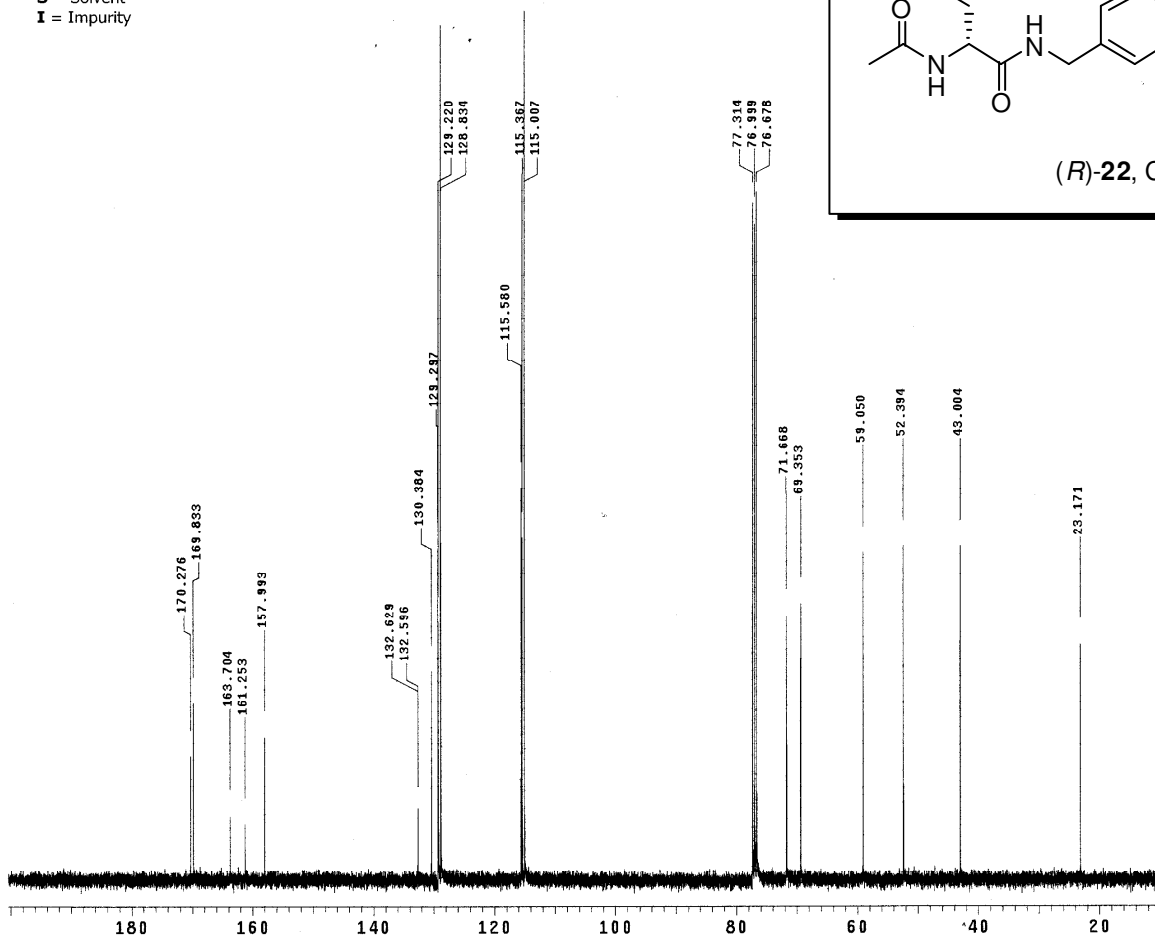


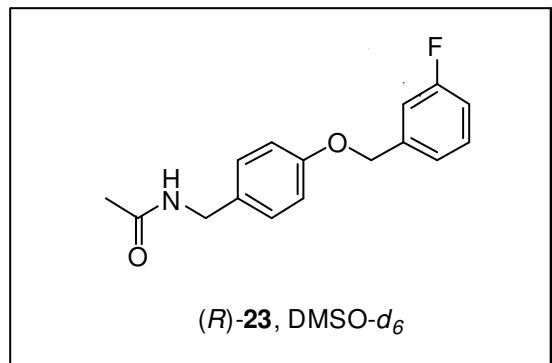




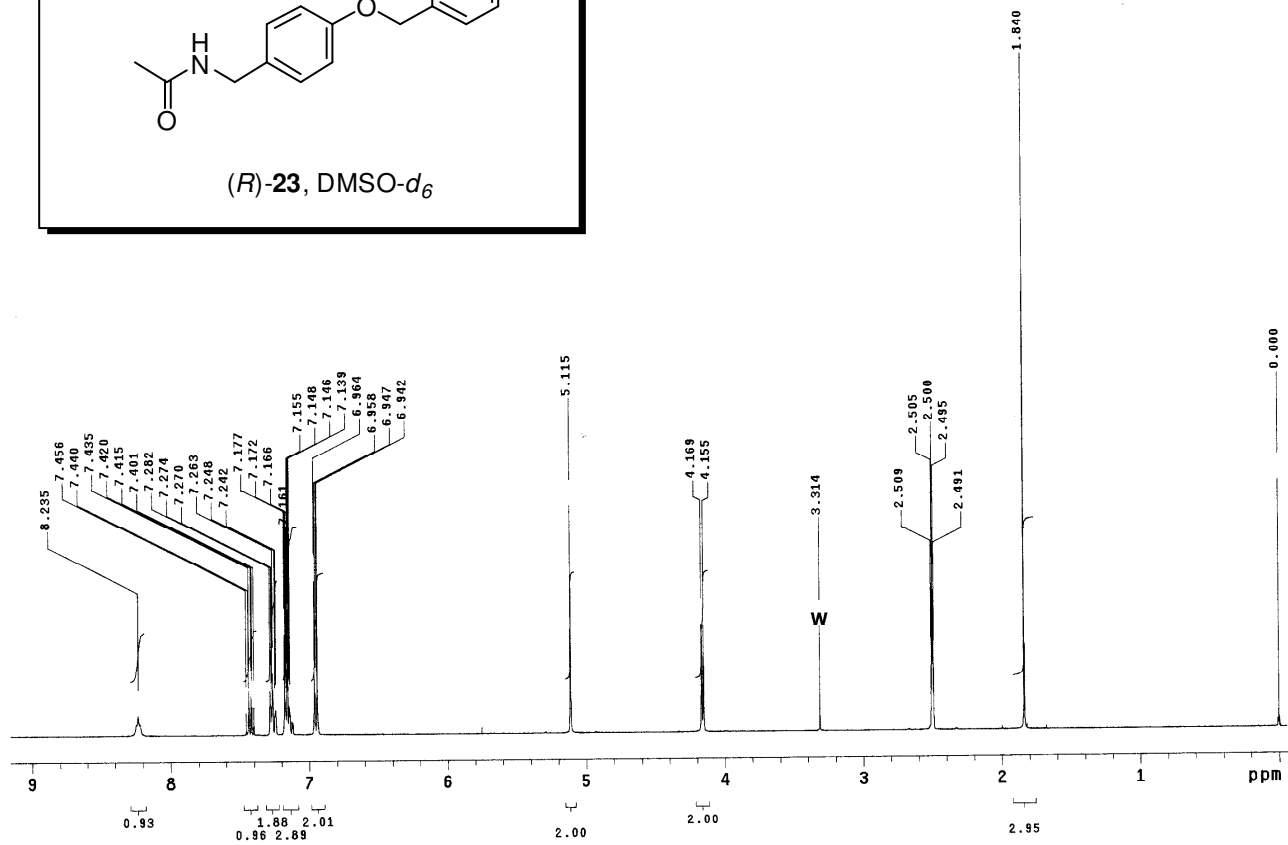
W
S
I

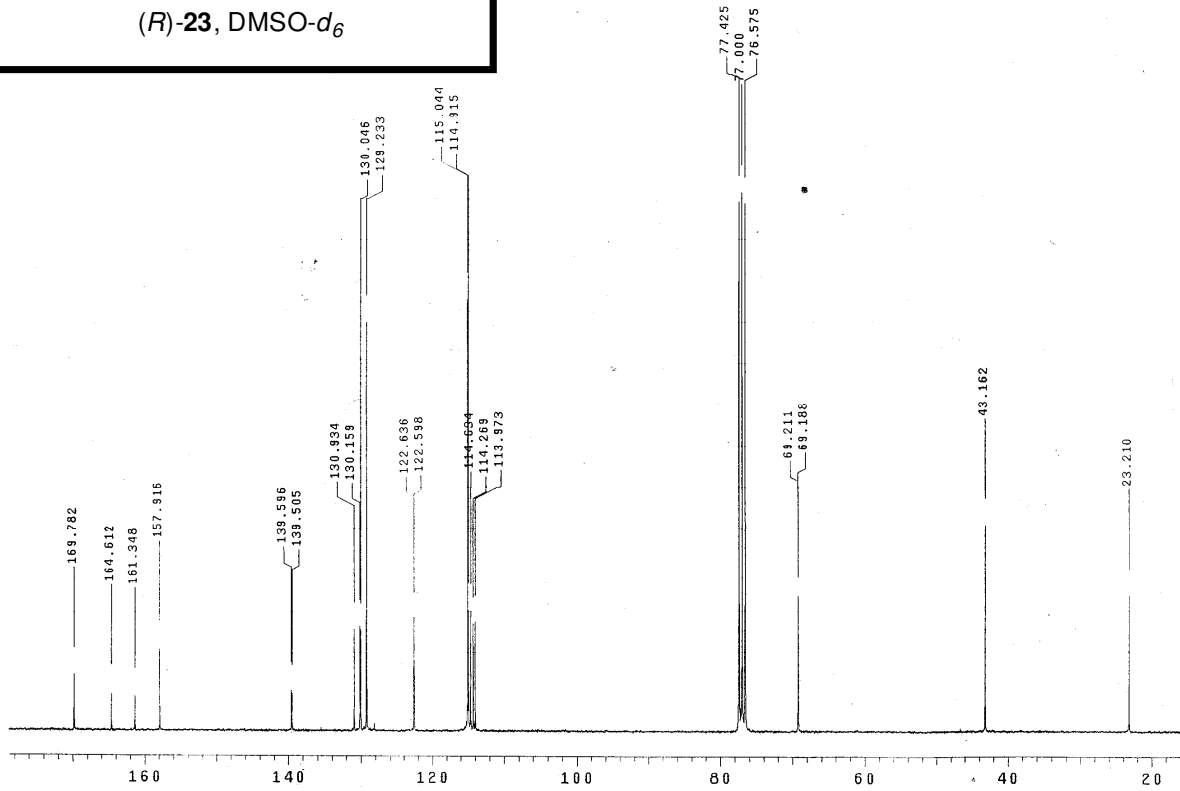
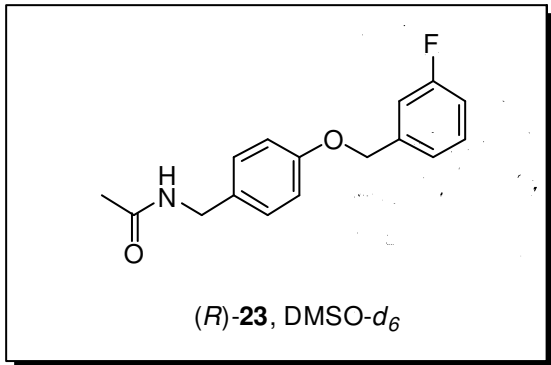
W = Water
S = Solvent
I = Impurity



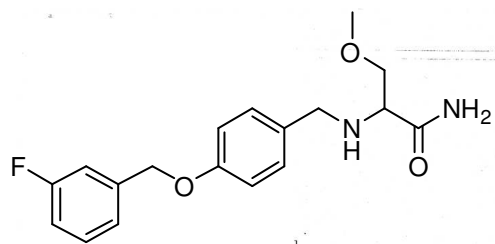


W = Water
 S = Solvent
 I = Impurity



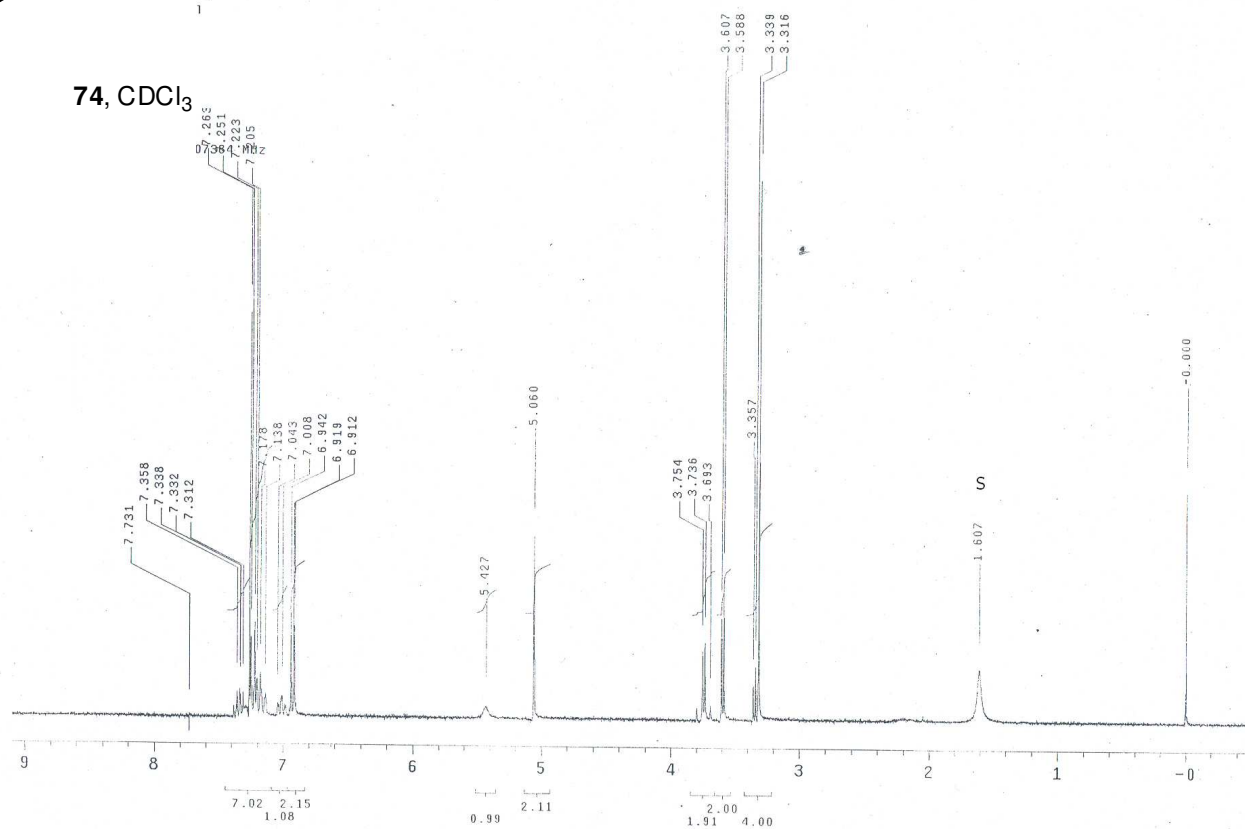


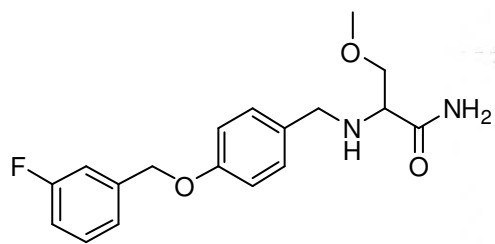
W
S
I



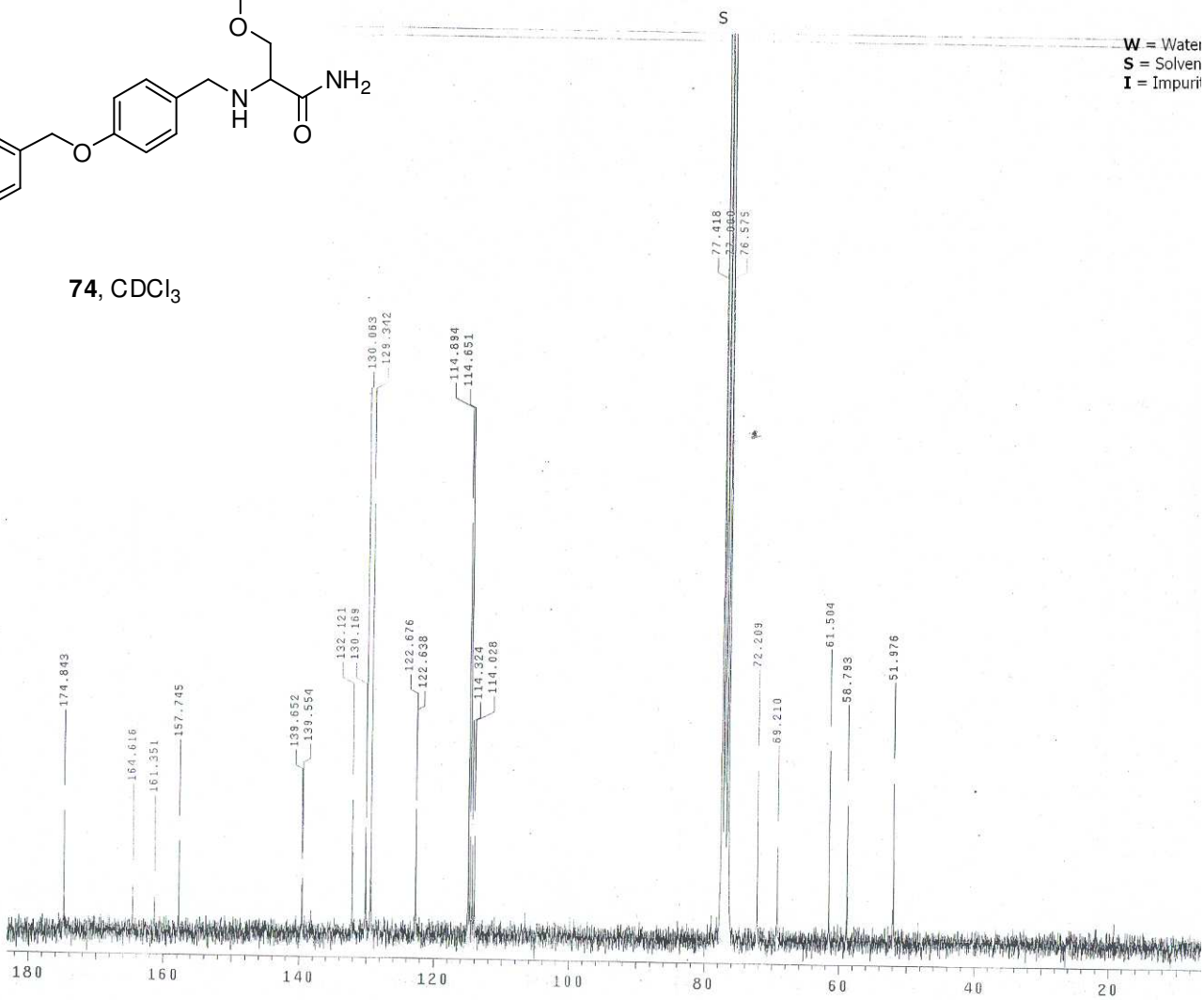
W =
S =
I =

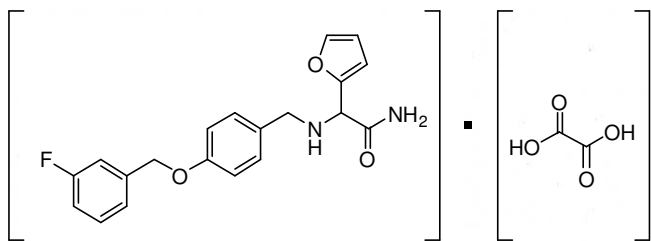
74, CDCl₃



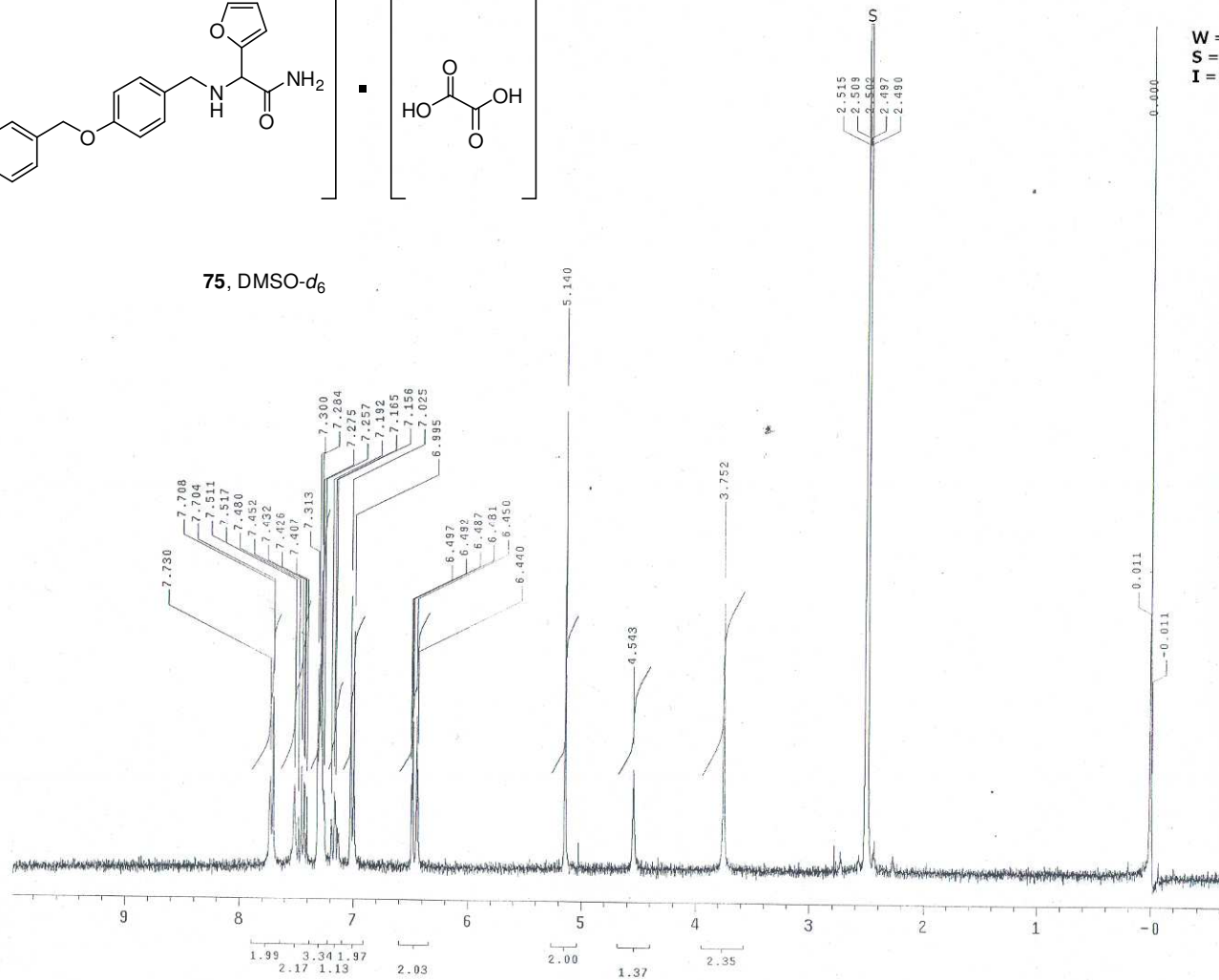


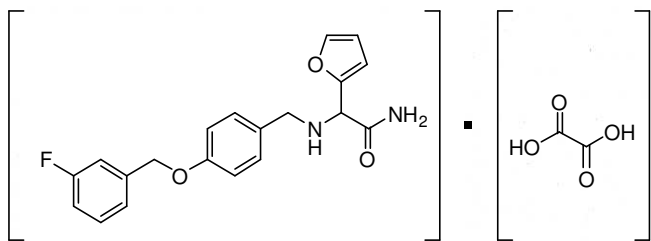
74, CDCl₃





75, DMSO-*d*₆





75, DMSO-*d*₆

