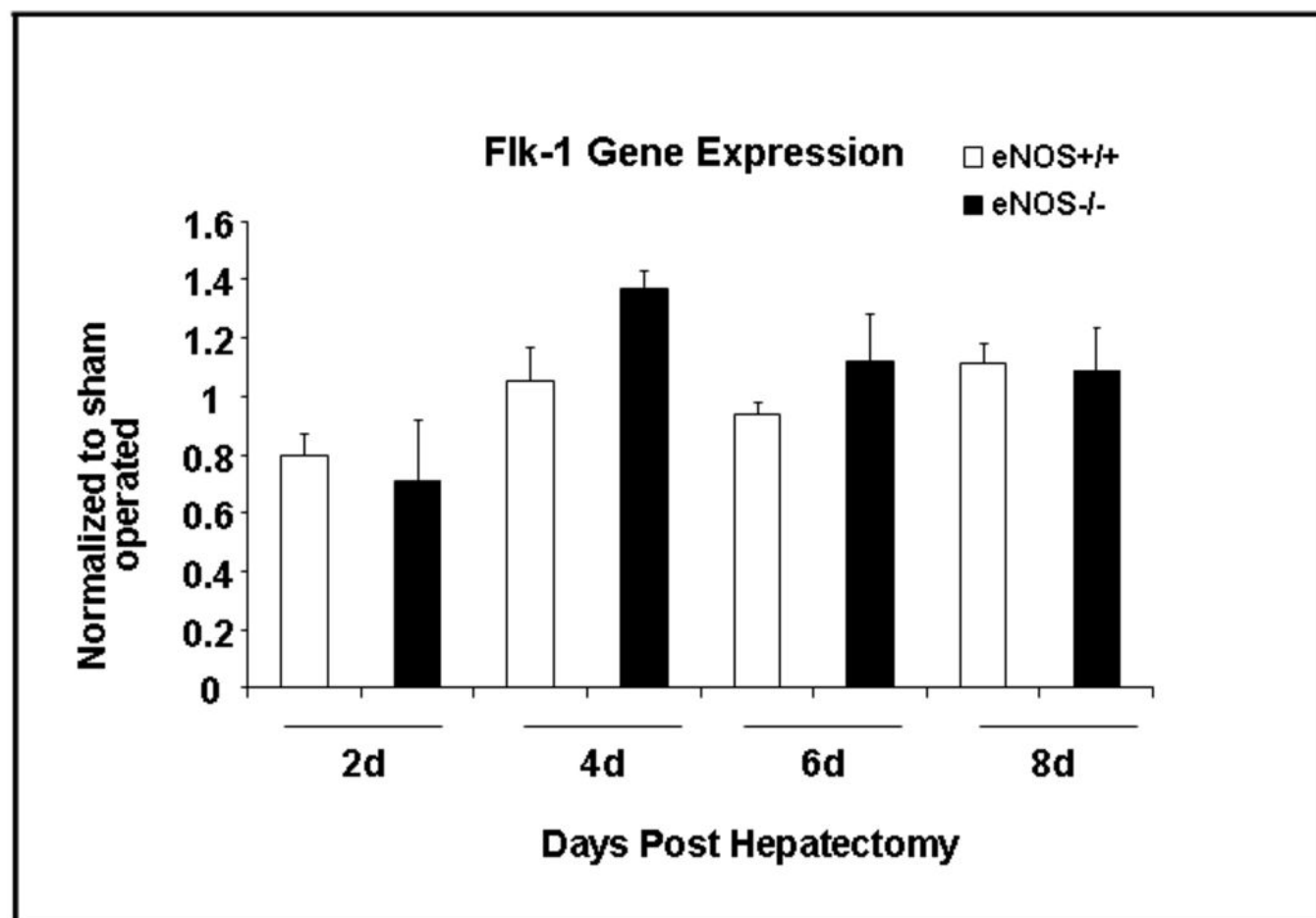


# Supplementary Data Table 1.

eNOS <sup>-/-</sup> Sham vs eNOS <sup>+/+</sup> Sham			eNOS <sup>-/-</sup> Phx vs eNOS <sup>+/+</sup> Phx			eNOS <sup>+/+</sup> Phx vs eNOS <sup>+/+</sup> Sham			eNOS <sup>-/-</sup> Phx vs eNOS <sup>-/-</sup> Sham		
<u>Genes Up-regulated</u>			<u>Genes Up-regulated</u>			<u>Genes Up-regulated</u>			<u>Genes Up-regulated</u>		
GeneBank	Gene Symbol	Fold Change	GeneBank	Gene Symbol	Fold Change	GeneBank	Gene Symbol	Fold Change	GeneBank	Gene Symbol	Fold Change
<i>NVI_007465</i>	<i>Birc2</i>	23.2	NM_011058	<i>Pdgfra</i>	1.5	<i>NVI_011058</i>	<i>Pdgfra</i>	16.1	<i>NVI_011058</i>	<i>Pdgfra</i>	9.9
NM_011058	<i>Pdgfra</i>	2.0	NM_008968	<i>Ptgis</i>	2.0	<i>NVI_008968</i>	<i>Ptgis</i>	20.6	<i>NVI_008968</i>	<i>Ptgis</i>	11.9
NM_008968	<i>Ptgis</i>	3.6	NM_008610	<i>Mmp2</i>	1.4	NM_008610	<i>Mmp2</i>	2.2	<i>NVI_008610</i>	<i>Mmp2</i>	4.5
NM_010177	<i>Fasl</i>	2.1	NM_009969	<i>Csf2</i>	1.5	NM_009969	<i>Csf2</i>	6.0			
NM_00816	<i>Pecam1</i>	1.5									
NM_011693	<i>Vcam1</i>	1.6									
NM_010104	<i>Edn1</i>	1.1									
NM_007551	<i>Cxcr5</i>	3.2									
NM_009810	<i>Casp3</i>	1.2									
NM_011333	<i>Ccl2</i>	1.4									
NM_008176	<i>Cxcl1</i>	2.5									
NM_009140	<i>Cxcl2</i>	1.1									
NM_010228	<i>Fit1</i>	1.6									
NM_010927	<i>Nos2</i>	1.0									
NM_177322	<i>Agtr1a</i>	1.7									
<u>Genes Down-regulated</u>			<u>Genes Down-regulated</u>			<u>Genes Down-regulated</u>			<u>Genes Down-regulated</u>		
GeneBank	Gene Symbol	Fold Change	GeneBank	Gene Symbol	Fold Change	GeneBank	Gene Symbol	Fold Change	GeneBank	Gene Symbol	Fold Change
NM_009741	<i>Bcl2</i>	1.0	NM_007465	<i>Birc2</i>	1.5	NM_007465	<i>Birc2</i>	1.6	<i>NVI_007465</i>	<i>Birc2</i>	55.2
NM_009969	<i>Csf2</i>	2.3	NM_009741	<i>Bcl2</i>	2.6	NM_009741	<i>Bcl2</i>	1.6	<i>NVI_009741</i>	<i>Bcl2</i>	4.1
			NM_010177	<i>Fasl</i>	1.4	NM_010177	<i>Fasl</i>	1.4	<i>NVI_010177</i>	<i>Fasl</i>	4.0
			NM_00816	<i>Pecam1</i>	1.5	<i>NVI_00816</i>	<i>Pecam1</i>	13.0	<i>NVI_00816</i>	<i>Pecam1</i>	21.6
			NM_011693	<i>Vcam1</i>	1.0	NM_011693	<i>Vcam1</i>	3.5	NM_011693	<i>Vcam1</i>	6.0
			NM_010104	<i>Edn1</i>	1.7	NM_010104	<i>Edn1</i>	3.1	<i>NVI_010104</i>	<i>Edn1</i>	5.8
			NM_007551	<i>Cxcr5</i>	1.8	NM_007551	<i>Cxcr5</i>	1.1	<i>NVI_007551</i>	<i>Cxcr5</i>	6.4
			NM_009810	<i>Casp3</i>	2.3	NM_009810	<i>Casp3</i>	1.9	<i>NVI_009810</i>	<i>Casp3</i>	5.0
			NM_011333	<i>Ccl2</i>	3.6	NM_011333	<i>Ccl2</i>	1.0	<i>NVI_011333</i>	<i>Ccl2</i>	5.2
			NM_008176	<i>Cxcl1</i>	1.4	<i>NVI_008176</i>	<i>Cxcl1</i>	4.3	<i>NVI_008176</i>	<i>Cxcl1</i>	15.2
			<i>NVI_009140</i>	<i>Cxcl2</i>	4.2	NM_009140	<i>Cxcl2</i>	3.2	<i>NVI_009140</i>	<i>Cxcl2</i>	14.8
			NM_010228	<i>Fit1</i>	2.3	NM_010228	<i>Fit1</i>	1.2	<i>NVI_010228</i>	<i>Fit1</i>	4.5
			NM_010927	<i>Nos2</i>	1.5	<i>NVI_010927</i>	<i>Nos2</i>	7.0	<i>NVI_010927</i>	<i>Nos2</i>	10.5
			NM_177322	<i>Agtr1a</i>	2.3	NM_177322	<i>Agtr1a</i>	1.1	<i>NVI_177322</i>	<i>Agtr1a</i>	4.3
						<i>NVI_009969</i>	<i>Csf2</i>	6.0	NM_009969	<i>Csf2</i>	1.7

Supplementary Figure 1.



**Supplementary Data Table 1.** Sinusoidal endothelial cells isolated from eNOS<sup>-/-</sup> and eNOS<sup>+/+</sup> mice following partial hepatectomy and Sham surgeries were subjected to mouse endothelial cell biology RT<sup>2</sup> Profiler PCR array and the results analyzed to look for genes which were either upregulated or downregulated between different groups (Genes in italics represent those whose value were above or below the median range).

**Supplementary Figure 1.** Flk-1 levels as assessed by PCR are shown in eNOS +/+ and -/- mice in response to hepatectomy (no significant differences were seen between groups).