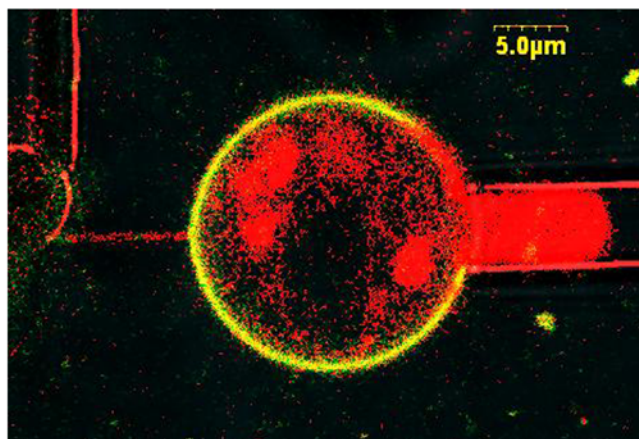


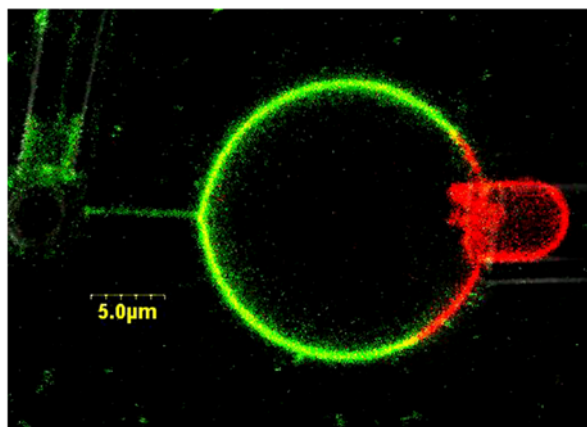
Supporting Information

Heinrich et al. 10.1073/pnas.0913997107



Movie S1. Ld phase tubes can be pulled out of Lo phase domain of a vesicle at low pulling speeds. A tube was pulled slowly from the ordered phase of the vesicle at an average pulling speed of about $0.04 \mu\text{m/s}$. A continuous Ld tube was generated from the Lo phase of the vesicle.

[Movie S1 \(AVI\)](#)



Movie S2. Lo phase tubes are pulled out of Lo phase domain of a vesicle at high pulling speeds. A tube was pulled at high speed of $1.5 \mu\text{m/s}$, resulting in an Lo tube. Reservoir membrane tension for movies 1 and 2 was $\sigma = 3.5 \cdot 10^{-5} \text{ N/m}$.

[Movie S2 \(AVI\)](#)