

The Plant Microtubule-Associated Protein AtMAP65-3/PLE Is Essential for Cytokinetic Phragmoplast Function

Sabine Müller, Andrei Smertenko, Vera Wagner,
Maria Heinrich, Patrick J. Hussey,
and Marie-Theres Hauser

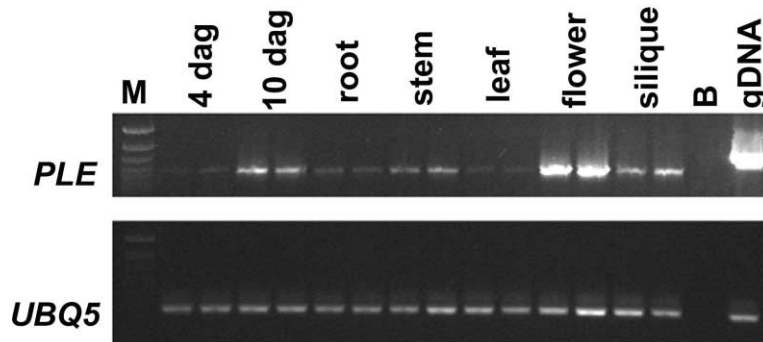


Figure S1. Expression of *AtMAP65-3/PLE* RT-PCR of cDNA from indicated wild-type seedlings and organs. Genomic DNA (gDNA) was used as a control. An *AtMAP65-3/PLE*-specific fragment is detectable in all organs analyzed. (B) no template control. UBQ5 (ubiquitin extension protein 5) was used as the loading control. M, markers.

Table S1. Molecular Markers and Primers Used for Cloning the *PLE* Gene and Analyzing Its Expression

Marker Size	Type Polymorphism	Distance to <i>PLE</i> [cM]	Primer Sequences 5'-3'
CIC7B9R 550 bp	CAPS (HindIII)	1.37 ± 0.3	F: 5'-ATCACTTCGTCACCTTTGATGAG R: 5'-GTATTACTACTACCTCCTGTT TG
CIC6A5L 240 bp	DA	1.15 ± 0.3	F: 5'-GCCAATACAACAATCAAATCTTCTCAAC R: 5'-CAACTGCAATTCTCATGGAGAAGCC
KG8sp 428 bp	DA	0.57 ± 0.2	F: 5'-GGGCCCTTCTTCCATCTTTG T R: 5'-CTTCGGAGCCGTTTAGTCTT CAC
mio24 498 bp	RFLP (EcoRV)	0.04 ± 0.01	F: 5'-AACGGATGAGTAGAAACCTGAACG-3' R: 5'-ATTGAAACCGCTACGCCGAC TC-3'
CIC4G5L 454 bp	DA	1.9 ± 0.4	F: 5'-GGCTTCCATGATGTGATTTGG-3' R: 5'-ACCGCATTTGTTCTTCTC CTG-3'
mfg13not 300 bp	DA	0.57 ± 0.2	F: 5' ATGGAACCAGAAGATACTCGTGC-3' R: 5' AACTACTTCACCTTCAGCGTCATG-3'
F12A17sp 413 bp	DA	0	F: 5'-GTTTCAGCTCTGTCTCCTCTCAAT-3' R: 5'-GATCATCTGCAAACCATAAACAAG-3'
K17N15/49 597 bp	CAPS (Ddel)	0.13 ± 0.1	F: 5'-GTACGCAAGGCAATGAACGAAATC-3' R: 5'-TACTAGCGGCCGCTCCATCATA-3'
Mioph2c 471 bp	DA	0.08 ± 0.02	F: 5'-TGGTGCGAGTTCTTTTGTGATTA-3' R: 5'-GTTTTAGATACCTGTCCCCTGTC-3'
Expression Analysis	cDNA bp	gDNA bp	
<i>PLE</i> splicing	481	711	F: 5'-CCCAATCTCATCATCATCTC-3' R: 5'-TCTAAGCTGAGCTCTACATCGA-3'
<i>PLE</i> expression	1109	1722	F: 5'-ATGTCGGTGATCTGCTTTCTTTGTTAG-3' R: 5'-AGAGTTACACTGCCAGCTGCA-3'
<i>UBQ5</i> expression	426	426	F: 5'-GGTGCTAAGAAGAGGAAGAAT-3' R: 5'-CTCCTTCTTCTGGTAAACGT-3'

The markers are indicated with CAPS for cleaved amplified polymorphism, DA for duplex analysis markers, and RFLP for restriction fragment length polymorphism marker.