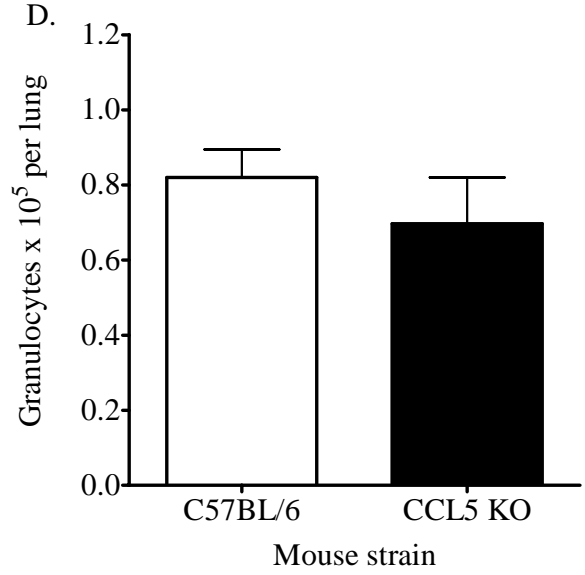
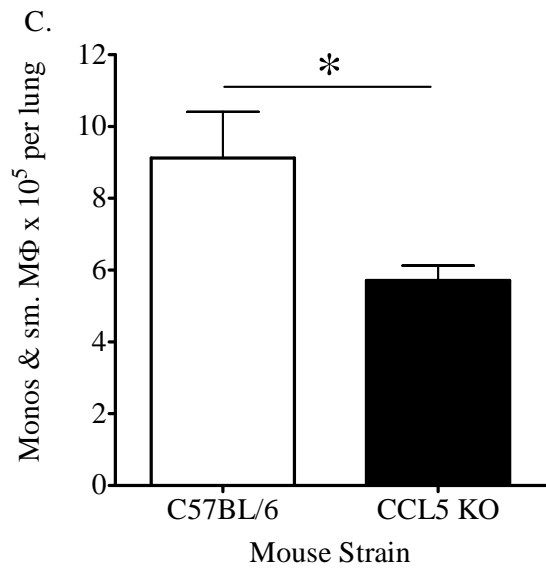
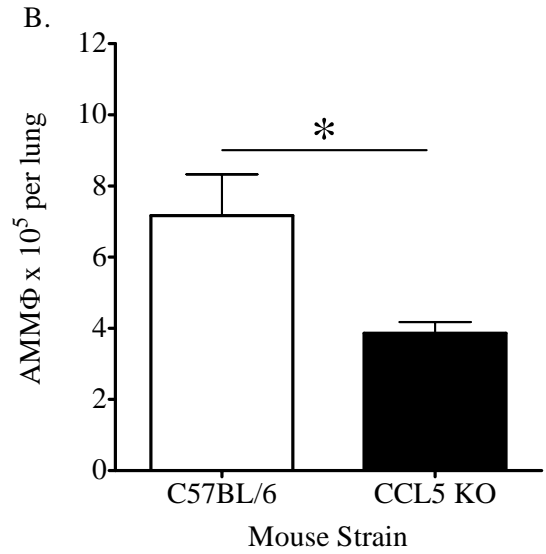
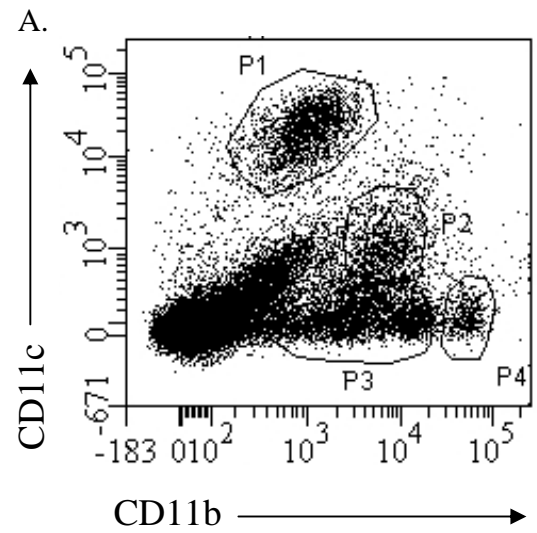
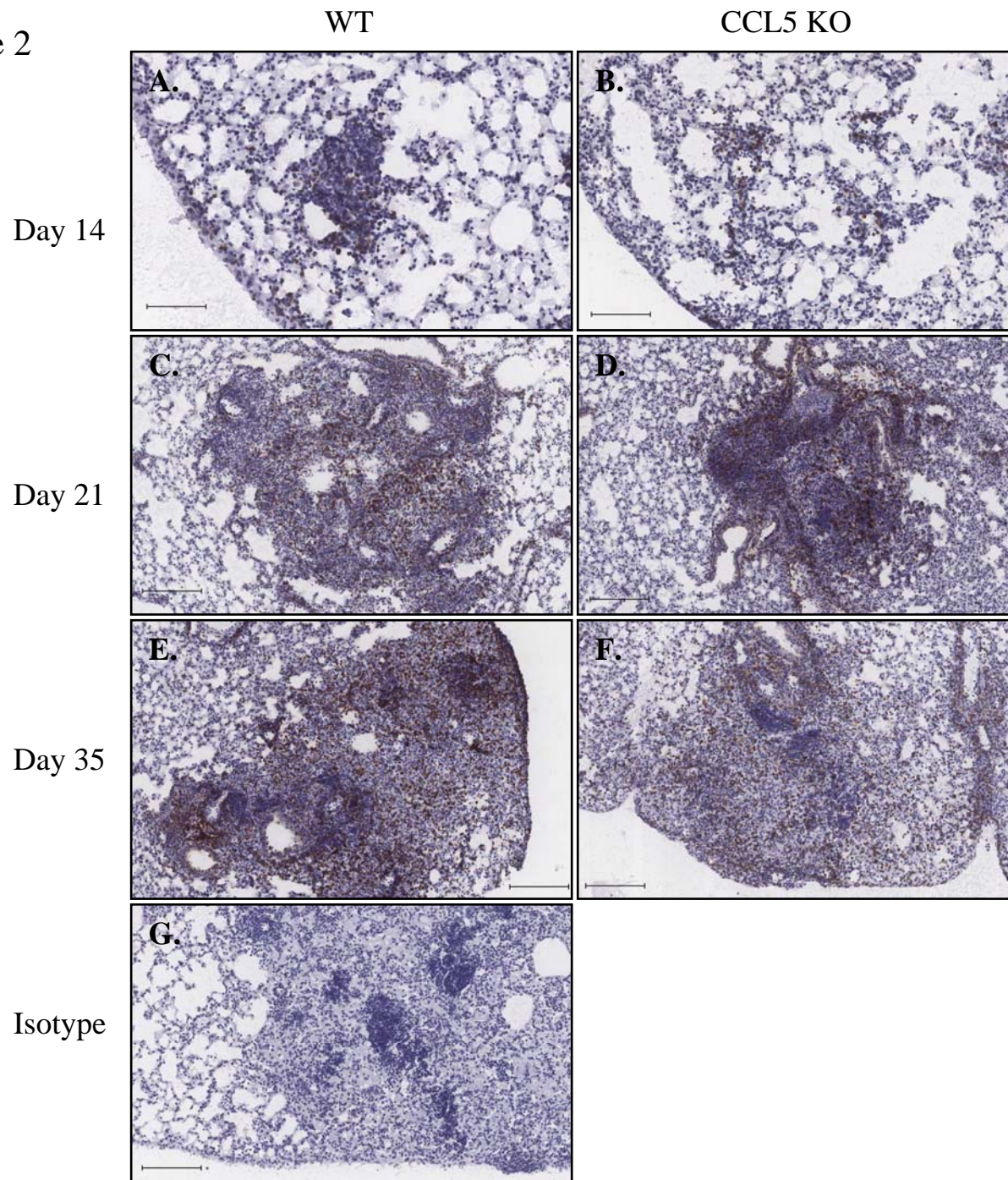


# Supplemental Figure 1



**Supplemental Figure 1. Numbers of macrophages, monocytes and granulocytes in *M.tb*-infected CCL5 KO and WT mice.** Mice were infected with 50-100 CFU of *M.tb* Erdman by aerosol and euthanized at day 14 of infection. Lung cells were fixed and labeled with anti-CD11c and anti-CD11b. A representative dot plot is shown (A). Alveolar macrophages were defined as CD11c<sup>hi</sup>/CD11b<sup>mid-lo</sup> (P1) and the corresponding numbers of alveolar macrophages are shown (B). Two populations of small macrophages and monocytes were identified: CD11c<sup>-</sup>/CD11b<sup>mid-lo</sup> (P2) and CD11c<sup>mid</sup>/CD11b<sup>mid</sup> (P3), and the numbers are shown (C). Granulocytes were defined as CD11c<sup>-</sup>/CD11b<sup>hi</sup> (P4), and the numbers are shown (D). Data are the combined average  $\pm$  SEM of 2 independent experiments each with 4-5 mice per group analyzed by the Student's *t*-test (\**p*<0.05).

Supplemental Figure 2



**Supplemental Figure 2. Localization of CD4<sup>+</sup> cells to lung granulomas of CCL5 KO and WT mice.** Mice were infected with 50-100 CFU of *M.tb* Erdman by aerosol. At the indicated time points, mice were euthanized, lung lobes perfused with 30% OCT, embedded in OCT, snap frozen and sectioned at 5µm. Sections were labeled with anti-CD4 (A-F) or isotype control (G) for immunohistochemistry. Positive staining is shown with DAB chromagen (brown). Photomicrographs represent 4-5 lung lobes from individual mice with 4 sections approximately 30-60µm apart, per group per time point. Scale bars = 100µm (A, B) and 200µm (C, D, E, F, G).