

	1	10	20	30	40	50
Identity						
B26	AATAGCTTTC	CTTTAGAGGA	AGTTGCCATT	CCCATCCT	AC	CAGGTTATCA
B37	AATAGCTTTC	CTTTAGAGGA	AGTTGCCATT	CCCATCCT	AC	CAGGTTATCA
LPCoLN	AATAGCTTTC	CTTTAGAGGA	AGTTGCCATT	CCCATCCT	AC	CAGGTTATCA
DE177	AATAGCTTTC	CTTTAGAGGA	AGTTGCCATT	CCCATCCT	AC	CAGGTTATCA
AR39	AATAGCTTTC	CTTTAGAGGA	AGTTGCCATT	CCCATCCTGC		CAGGTTATCA
AR39-2	AATAGCTTTC	CTTTAGAGGA	AGTTGCCATT	CCCATCCTGC		CAGGTTATCA
CWL029	AATAGCTTTC	CTTTAGAGGA	AGTTGCCATT	CCCATCCTGC		CAGGTTATCA
J138	AATAGCTTTC	CTTTAGAGGA	AGTTGCCATT	CCCATCCTGC		CAGGTTATCA
TW183	AATAGCTTTC	CTTTAGAGGA	AGTTGCCATT	CCCATCCTGC		CAGGTTATCA
IOL207	AATAGCTTTC	CTTTAGAGGA	AGTTGCCATT	CCCATCCTGC		CAGGTTATCA
TOR1	AATAGCTTTC	CTTTAGAGGA	AGTTGCCATT	CCCATCCTGC		CAGGTTATCA
WA97001	AATAGCTTTC	CTTTAGAGGA	AGTTGCCATT	CCCATCCTGC		CAGGTTATCA
1979	AATAGCTTTC	CTTTAGAGGA	AGTTGCCATT	CCCATCCTGC		CAGGTTATCA
SH511	AATAGCTTTC	CTTTAGAGGA	AGTTGCCATT	CCCATCCTGC		CAGGTTATCA

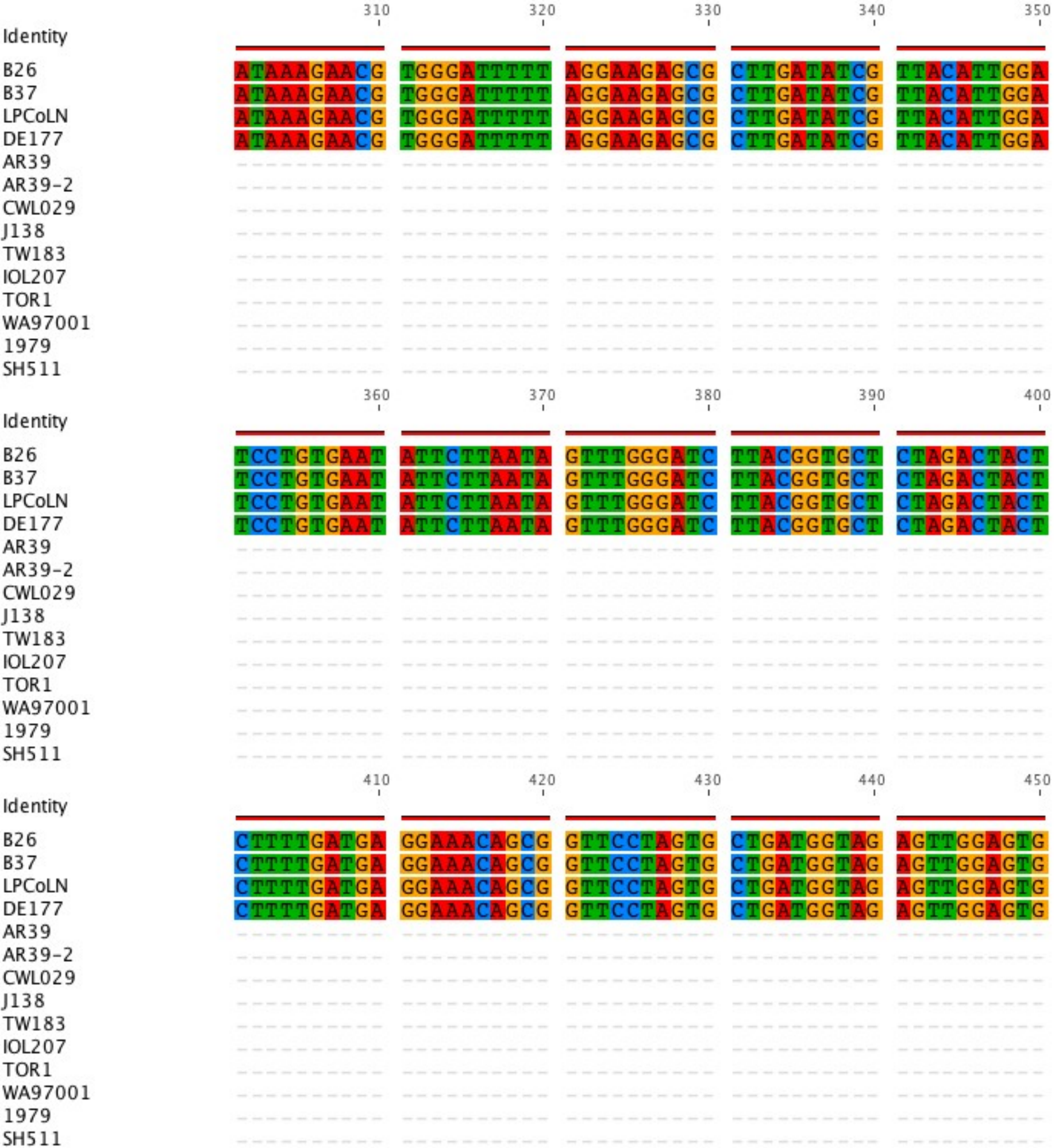
	60	70	80	90	100
Identity					
B26	CCCTAAGTTT	TATTTATCTT	TCATAGATAG	GGACGATCAA	GGTGTCCACT
B37	CCCTAAGTTT	TATTTATCTT	TCATAGATAG	GGACGATCAA	GGTGTCCACT
LPCoLN	CCCTAAGTTT	TATTTATCTT	TCATAGATAG	GGACGATCAA	GGTGTCCACT
DE177	CCCTAAGTTT	TATTTATCTT	TCATAGATAG	GGACGATCAA	GGTGTCCACT
AR39	CCCTAAGTTT	TATTTATCTT	TCATAGATAG	GGACGATCAA	GGTGTCCACT
AR39-2	CCCTAAGTTT	TATTTATCTT	TCATAGATAG	GGACGATCAA	GGTGTCCACT
CWL029	CCCTAAGTTT	TATTTATCTT	TCATAGATAG	GGACGATCAA	GGTGTCCACT
J138	CCCTAAGTTT	TATTTATCTT	TCATAGATAG	GGACGATCAA	GGTGTCCACT
TW183	CCCTAAGTTT	TATTTATCTT	TCATAGATAG	GGACGATCAA	GGTGTCCACT
IOL207	CCCTAAGTTT	TATTTATCTT	TCATAGATAG	GGACGATCAA	GGTGTCCACT
TOR1	CCCTAAGTTT	TATTTATCTT	TCATAGATAG	GGACGATCAA	GGTGTCCACT
WA97001	CCCTAAGTTT	TATTTATCTT	TCATAGATAG	GGACGATCAA	GGTGTCCACT
1979	CCCTAAGTTT	TATTTATCTT	TCATAGATAG	GGACGATCAA	GGTGTCCACT
SH511	CCCTAAGTTT	TATTTATCTT	TCATAGATAG	GGACGATCAA	GGTGTCCACT

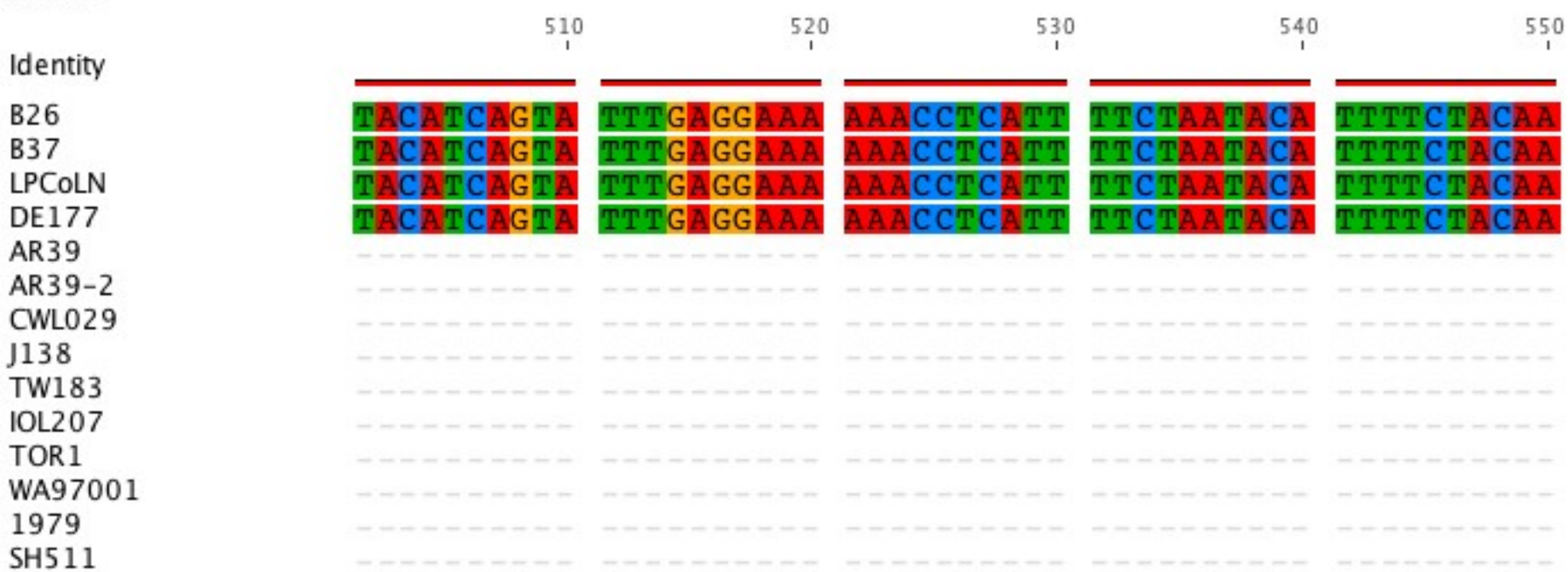
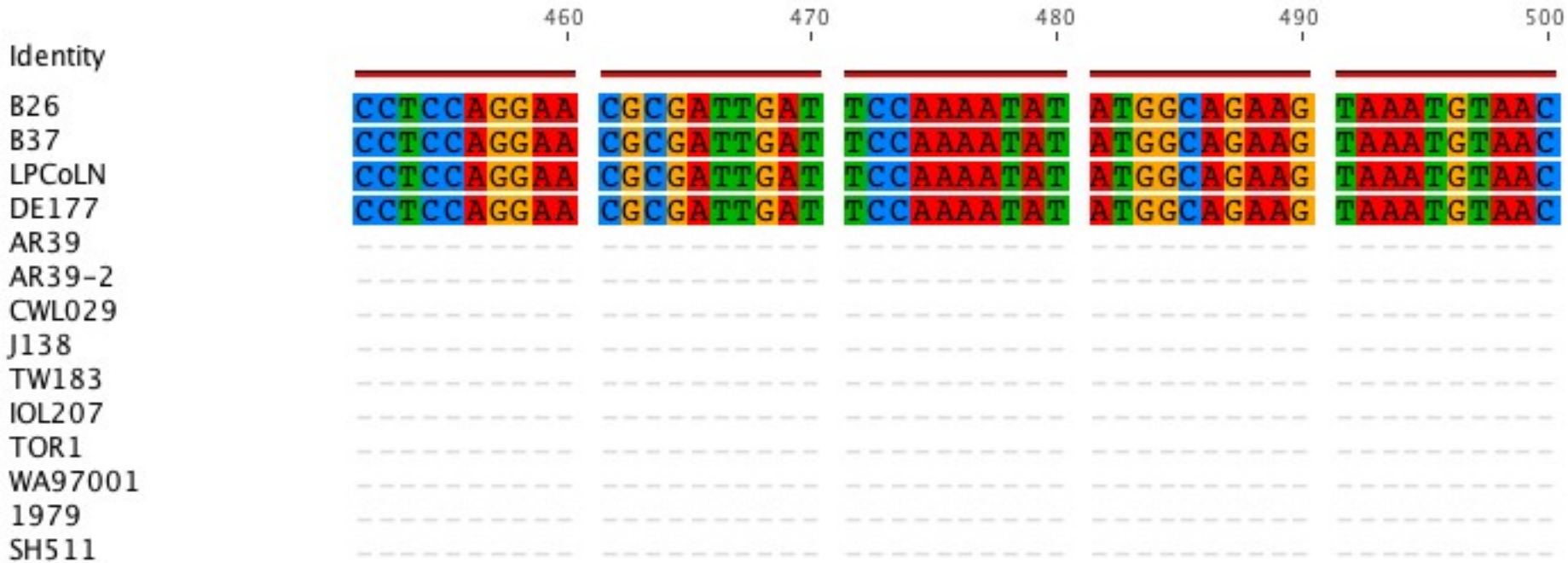
	110	120	130	140	150
Identity					
B26	ATGAAGTTTT	AGATGGCGTA	TTTTTAAAGA	CAGTCGCTGC	TTGTATTATA
B37	ATGAAGTTTT	AGATGGCGTA	TTTTTAAAGA	CAGTCGCTGC	TTGTATTATA
LPCoLN	ATGAAGTTTT	AGATGGCGTA	TTTTTAAAGA	CAGTCGCTGC	TTGTATTATA
DE177	ATGAAGTTTT	AGATGGCGTA	TTTTTAAAGA	CAGTCGCTGC	TTGTATTATA
AR39	ATGAAGTTTT	AGATGGCGTA	TTTTTAAAGA	CAGTCGCTGC	TTGTATTATA
AR39-2	ATGAAGTTTT	AGATGGCGTA	TTTTTAAAGA	CAGTCGCTGC	TTGTATTATA
CWL029	ATGAAGTTTT	AGATGGCGTA	TTTTTAAAGA	CAGTCGCTGC	TTGTATTATA
J138	ATGAAGTTTT	AGATGGCGTA	TTTTTAAAGA	CAGTCGCTGC	TTGTATTATA
TW183	ATGAAGTTTT	AGATGGCGTA	TTTTTAAAGA	CAGTCGCTGC	TTGTATTATA
IOL207	ATGAAGTTTT	AGATGGCGTA	TTTTTAAAGA	CAGTCGCTGC	TTGTATTATA
TOR1	ATGAAGTTTT	AGATGGCGTA	TTTTTAAAGA	CAGTCGCTGC	TTGTATTATA
WA97001	ATGAAGTTTT	AGATGGCGTA	TTTTTAAAGA	CAGTCGCTGC	TTGTATTATA
1979	ATGAAGTTTT	AGATGGCGTA	TTTTTAAAGA	CAGTCGCTGC	TTGTATTATA
SH511	ATGAAGTTTT	AGATGGCGTA	TTTTTAAAGA	CAGTCGCTGC	TTGTATTATA

Identity	160	170	180	190	200
B26	GAGAACTCCT	TCTTAACTGA	TTCTATGAGC	CCGGAGCTTC	TCAGCGAAGT
B37	GAGAACTCCT	TCTTAACTGA	TTCTATGAGC	CCGGAGCTTC	TCAGCGAAGT
LPCoLN	GAGAACTCCT	TCTTAACTGA	TTCTATGAGC	CCGGAGCTTC	TCAGCGAAGT
DE177	GAGAACTCCT	TCTTAACTGA	TTCTATGAGC	CCGGAGCTTC	TCAGCGAAGT
AR39	GAGAACTCCT	TCTTAACTGA	TTCTATGAGC	CCGGAGCTTC	TCAGCGAAGT
AR39-2	GAGAACTCCT	TCTTAACTGA	TTCTATGAGC	CCGGAGCTTC	TCAGCGAAGT
CWL029	GAGAACTCCT	TCTTAACTGA	TTCTATGAGC	CCGGAGCTTC	TCAGCGAAGT
J138	GAGAACTCCT	TCTTAACTGA	TTCTATGAGC	CCGGAGCTTC	TCAGCGAAGT
TW183	GAGAACTCCT	TCTTAACTGA	TTCTATGAGC	CCGGAGCTTC	TCAGCGAAGT
IOL207	GAGAACTCCT	TCTTAACTGA	TTCTATGAGC	CCGGAGCTTC	TCAGCGAAGT
TOR1	GAGAACTCCT	TCTTAACTGA	TTCTATGAGC	CCGGAGCTTC	TCAGCGAAGT
WA97001	GAGAACTCCT	TCTTAACTGA	TTCTATGAGC	CCGGAGCTTC	TCAGCGAAGT
1979	GAGAACTCCT	TCTTAACTGA	TTCTATGAGC	CCGGAGCTTC	TCAGCGAAGT
SH511	GAGAACTCCT	TCTTAACTGA	TTCTATGAGC	CCGGAGCTTC	TCAGCGAAGT

Identity	210	220	230	240	250
B26	TAAGGAAGCT	CTGAAACGA	A GTTCTGAAAC	TGGAAATGCGC	TATTTCATAG
B37	TAAGGAAGCT	CTGAAACGA	A GTTCTGAAAC	TGGAAATGCGC	TATTTCATAG
LPCoLN	TAAGGAAGCT	CTGAAACGA	A GTTCTGAAAC	TGGAAATGCGC	TATTTCATAG
DE177	TAAGGAAGCT	CTGAAACGA	A GTTCTGAAAC	TGGAAATGCGC	TATTTCATAG
AR39	TAAGGAAGCT	CTGAAACGA	-	-	-
AR39-2	TAAGGAAGCT	CTGAAACGA	-	-	-
CWL029	TAAGGAAGCT	CTGAAACGA	-	-	-
J138	TAAGGAAGCT	CTGAAACGA	-	-	-
TW183	TAAGGAAGCT	CTGAAACGA	-	-	-
IOL207	TAAGGAAGCT	CTGAAACGA	-	-	-
TOR1	TAAGGAAGCT	CTGAAACGA	-	-	-
WA97001	TAAGGAAGCT	CTGAAACGA	-	-	-
1979	TAAGGAAGCT	CTGAAACGA	-	-	-
SH511	TAAGGAAGCT	CTGAAACGA	-	-	-

Identity	260	270	280	290	300
B26	GATCAGAACCA	TTCTAAGAAT	CTAATGACAG	GATCTAATTC	TTTTGAACTT
B37	GATCAGAACCA	TTCTAAGAAT	CTAATGACAG	GATCTAATTC	TTTTGAACTT
LPCoLN	GATCAGAACCA	TTCTAAGAAT	CTAATGACAG	GATCTAATTC	TTTTGAACTT
DE177	GATCAGAACCA	TTCTAAGAAT	CTAATGACAG	GATCTAATTC	TTTTGAACTT
AR39	-	-	-	-	-
AR39-2	-	-	-	-	-
CWL029	-	-	-	-	-
J138	-	-	-	-	-
TW183	-	-	-	-	-
IOL207	-	-	-	-	-
TOR1	-	-	-	-	-
WA97001	-	-	-	-	-
1979	-	-	-	-	-
SH511	-	-	-	-	-

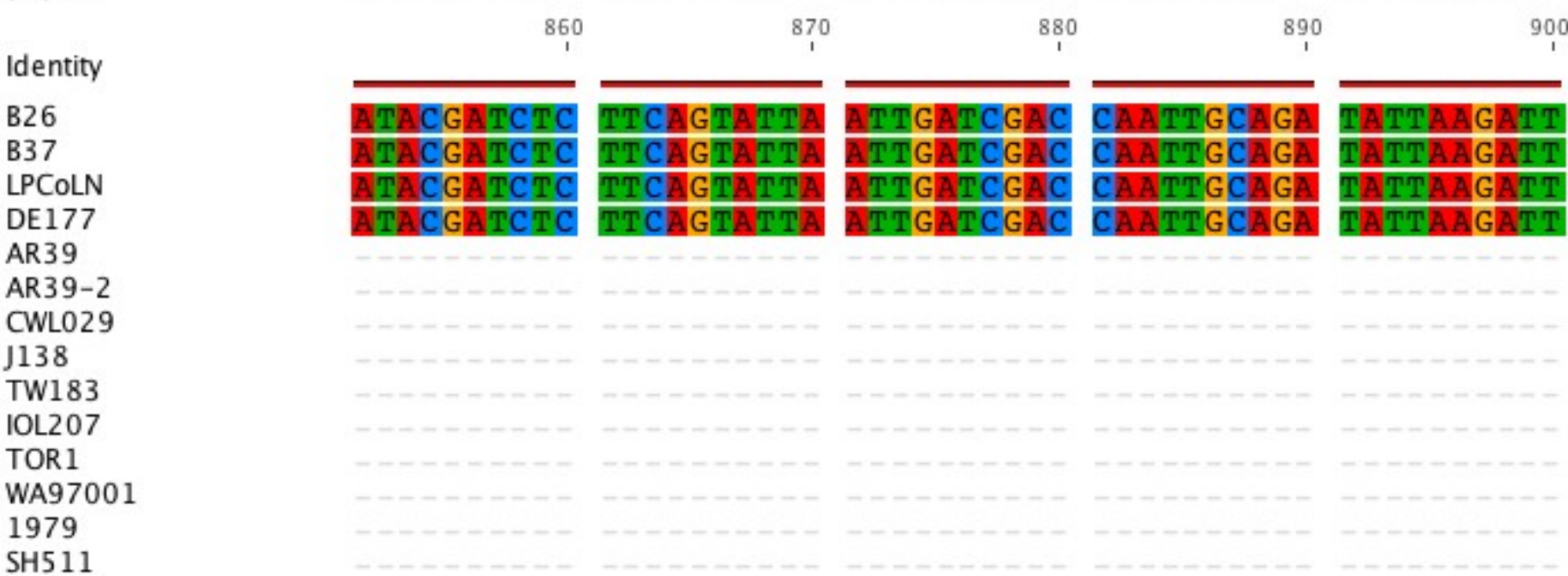
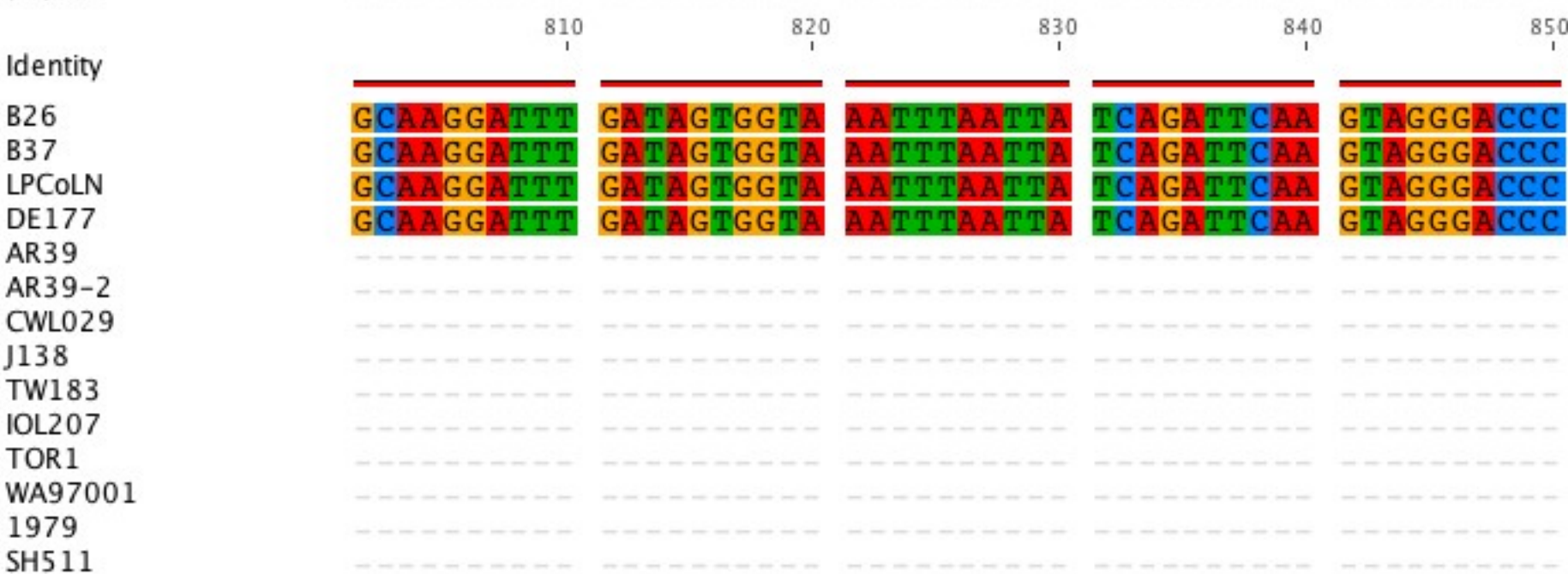
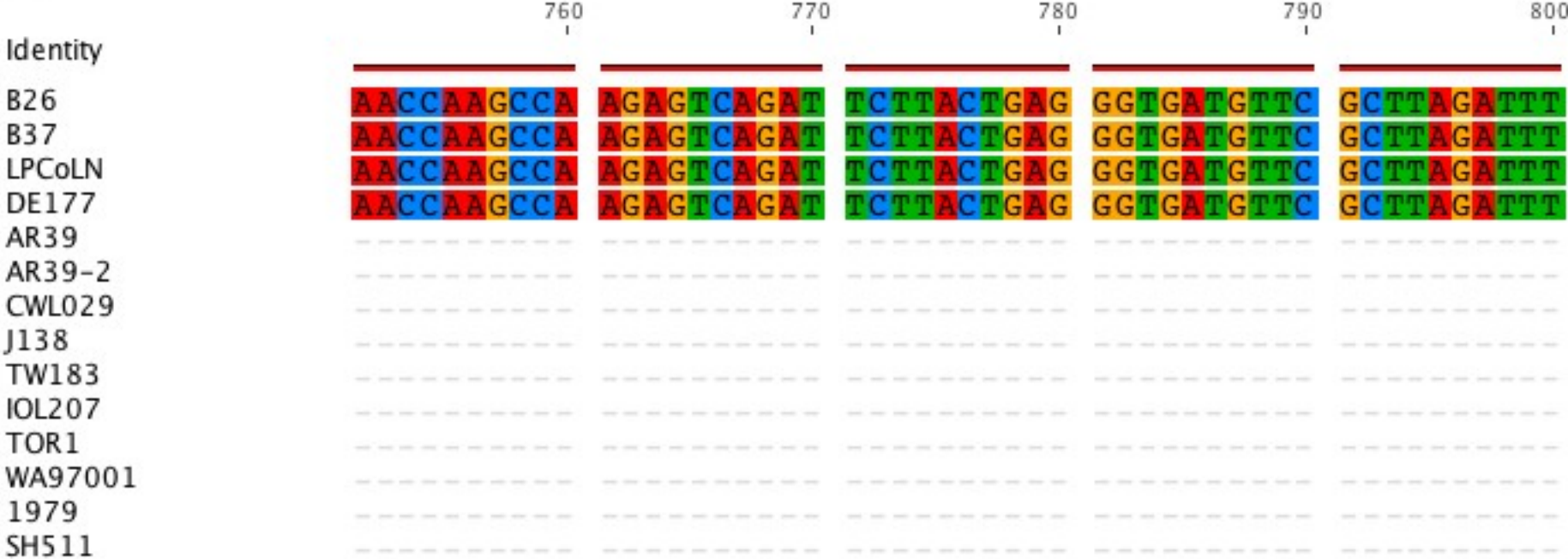


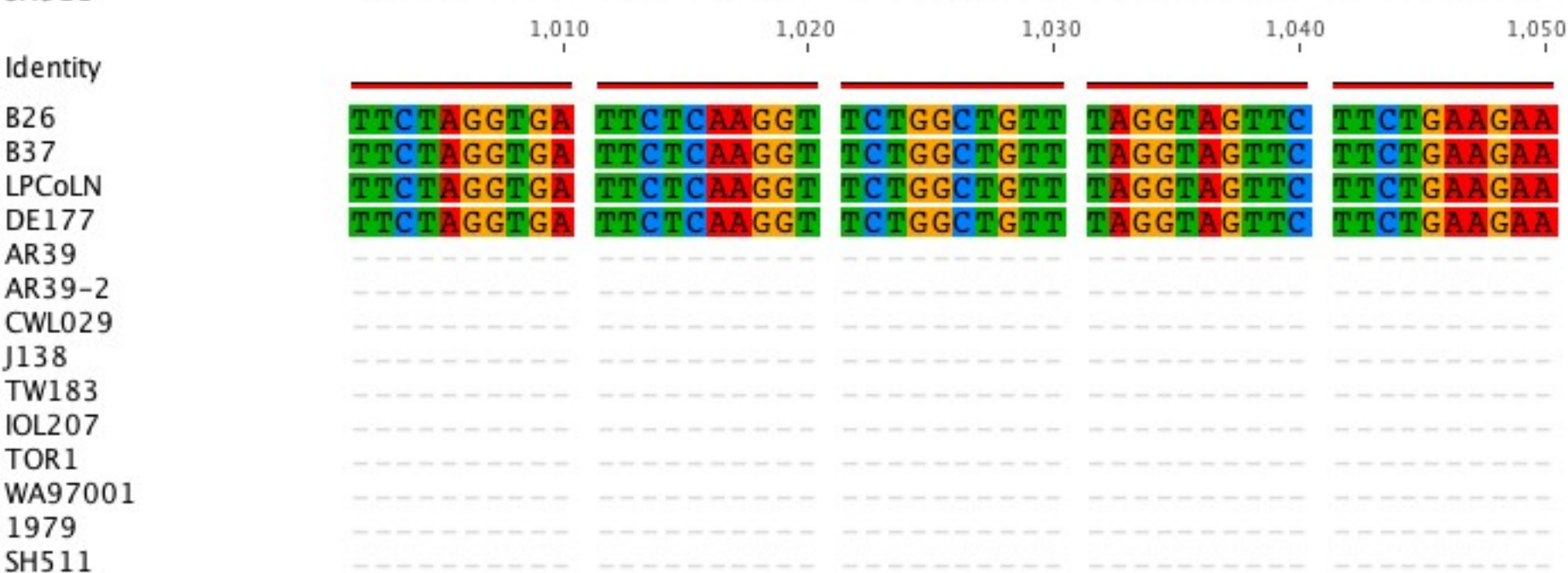
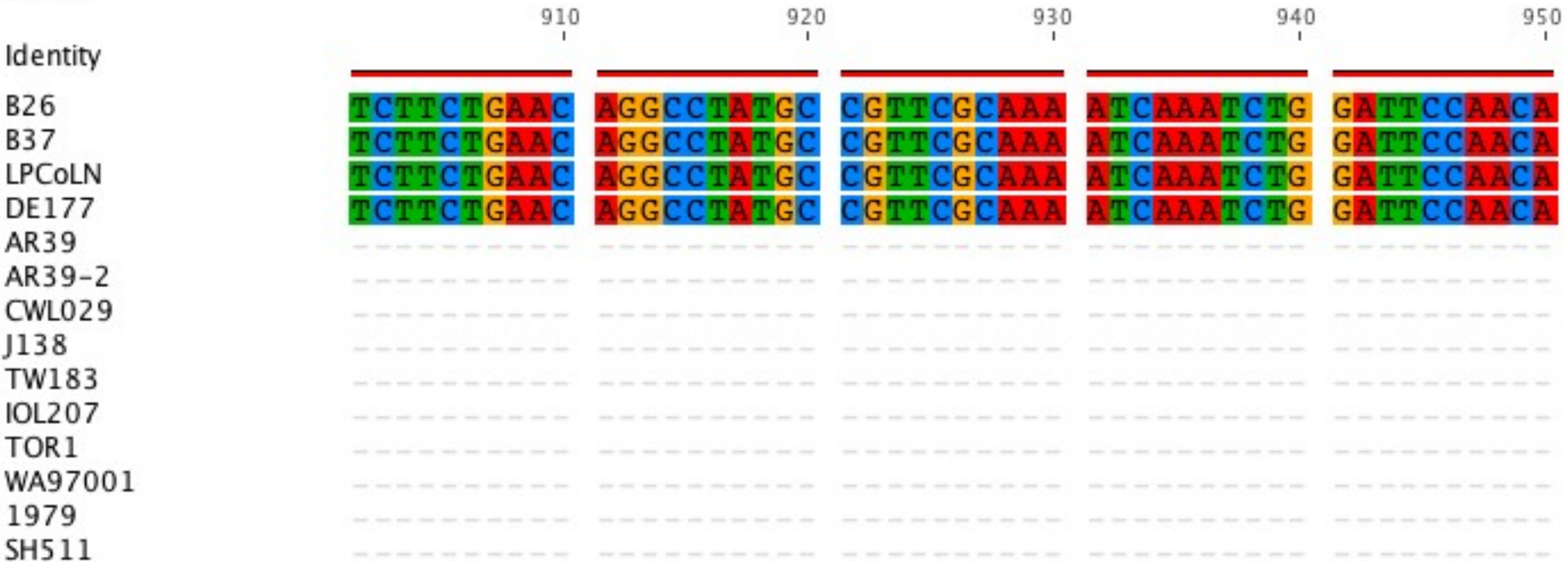


Identity	610	620	630	640	650
B26	GGG TGTGTAG	CTGGG AACTC	TAAAG AAATT	GGAG TCGTGA	GACG CCAACT
B37	GGG TGTGTAG	CTGGG AACTC	TAAAG AAATT	GGAG TCGTGA	GACG CCAACT
LPCoLN	GGG TGTGTAG	CTGGG AACTC	TAAAG AAATT	GGAG TCGTGA	GACG CCAACT
DE177	GGG TGTGTAG	CTGGG AACTC	TAAAG AAATT	GGAG TCGTGA	GACG CCAACT
AR39	-----	-----	-----	-----	-----
AR39-2	-----	-----	-----	-----	-----
CWL029	-----	-----	-----	-----	-----
J138	-----	-----	-----	-----	-----
TW183	-----	-----	-----	-----	-----
IOL207	-----	-----	-----	-----	-----
TOR1	-----	-----	-----	-----	-----
WA97001	-----	-----	-----	-----	-----
1979	-----	-----	-----	-----	-----
SH511	-----	-----	-----	-----	-----

Identity	660	670	680	690	700
B26	TTT CCCTAGT	TAT GTCCC GA	AGT TACC AGA	TTT AGTAAAG	AAG TATAAAA
B37	TTT CCCTAGT	TAT GTCCC GA	AGT TACC AGA	TTT AGTAAAG	AAG TATAAAA
LPCoLN	TTT CCCTAGT	TAT GTCCC GA	AGT TACC AGA	TTT AGTAAAG	AAG TATAAAA
DE177	TTT CCCTAGT	TAT GTCCC GA	AGT TACC AGA	TTT AGTAAAG	AAG TATAAAA
AR39	-----	-----	-----	-----	-----
AR39-2	-----	-----	-----	-----	-----
CWL029	-----	-----	-----	-----	-----
J138	-----	-----	-----	-----	-----
TW183	-----	-----	-----	-----	-----
IOL207	-----	-----	-----	-----	-----
TOR1	-----	-----	-----	-----	-----
WA97001	-----	-----	-----	-----	-----
1979	-----	-----	-----	-----	-----
SH511	-----	-----	-----	-----	-----

Identity	710	720	730	740	750
B26	GAT CAGCAA A	AAT CTTAA TT	AAT AAGATA A	G CTTTGG AAA	TAT TTGGC GT
B37	GAT CAGCAA A	AAT CTTAA TT	AAT AAGATA A	G CTTTGG AAA	TAT TTGGC GT
LPCoLN	GAT CAGCAA A	AAT CTTAA TT	AAT AAGATA A	G CTTTGG AAA	TAT TTGGC GT
DE177	GAT CAGCAA A	AAT CTTAA TT	AAT AAGATA A	G CTTTGG AAA	TAT TTGGC GT
AR39	-----	-----	-----	-----	-----
AR39-2	-----	-----	-----	-----	-----
CWL029	-----	-----	-----	-----	-----
J138	-----	-----	-----	-----	-----
TW183	-----	-----	-----	-----	-----
IOL207	-----	-----	-----	-----	-----
TOR1	-----	-----	-----	-----	-----
WA97001	-----	-----	-----	-----	-----
1979	-----	-----	-----	-----	-----
SH511	-----	-----	-----	-----	-----





Identity 1,060 1,070 1,080 1,090 1,100

B26	GA	TGATGATC	CTATGGATGA	ATCCGATGGA	GAAGAAGCTT	CAAAAGATTC	
B37	GA	TGATGATC	CTATGGATGA	ATCCGATGGA	GAAGAAGCTT	CAAAAGATTC	
LPCoLN	GA	TGATGATC	CTATGGATGA	ATCCGATGGA	GAAGAAGCTT	CAAAAGATTC	
DE177	GA	TGATGATC	CTATGGATGA	ATCCGATGGA	GAAGAAGCTT	CAAAAGATTC	
AR39	--	--TGA--	--ATGGATGA	ATC	TGATGGA	GAAGAAGCTT	CAAAAGATTC
AR39-2	--	TGATGATC	CTATGGATGA	ATC	TGATGGA	GAAGAAGCTT	CAAAAGATTC
CWL029	--	--TGA--	--ATGGATGA	ATCCGATGGA	GAAGAAGCTT	CAAAAGATTC	
J138	--	--TGA--	--ATGGATGA	ATCCGATGGA	GAAGAAGCTT	CAAAAGATTC	
TW183	--	--TGA--	--ATGGATGA	ATC	TGATGGA	GAAGAAGCTT	CAAAAGATTC
IOL207	--	TGATGATC	CTATGGATGA	ATC	TGATGGA	GAAGAAGCTT	CAAAAGATTC
TOR1	--	TGATGATC	CTATGGATGA	ATCCGATGGA	GAAGAAGCTT	CAAAAGATTC	
WA97001	--	TGATGATC	CTATGGATGA	ATCCGATGGA	GAAGAAGCTT	CAAAAGATTC	
1979	--	TGATGATC	CTATGGATGA	ATCCGATGGA	GAAGAAGCTT	CAAAAGATTC	
SH511	--	TGATGATC	CTATGGATGA	ATCCGATGGA	GAAGAAGCTT	CAAAAGATTC	

Identity 1,110 1,120 1,130 1,140 1,150

B26	TGCATTTTCA	GCTAGTTTTT	CCTATGAGTT	TGTAAAATCA	AGTACTCGAG
B37	TGCATTTTCA	GCTAGTTTTT	CCTATGAGTT	TGTAAAATCA	AGTACTCGAG
LPCoLN	TGCATTTTCA	GCTAGTTTTT	CCTATGAGTT	TGTAAAATCA	AGTACTCGAG
DE177	TGCATTTTCA	GCTAGTTTTT	CCTATGAGTT	TGTAAAATCA	AGTACTCGAG
AR39	TGCATTTTCA	GCTAGTTTTT	CCTATGAGTT	TGTAAAATCA	AGTACTCGAG
AR39-2	TGCATTTTCA	GCTAGTTTTT	CCTATGAGTT	TGTAAAATCA	AGTACTCGAG
CWL029	TGCATTTTCA	GCTAGTTTTT	CCTATGAGTT	TGTAAAATCA	AGTACTCGAG
J138	TGCATTTTCA	GCTAGTTTTT	CCTATGAGTT	TGTAAAATCA	AGTACTCGAG
TW183	TGCATTTTCA	GCTAGTTTTT	CCTATGAGTT	TGTAAAATCA	AGTACTCGAG
IOL207	TGCATTTTCA	GCTAGTTTTT	CCTATGAGTT	TGTAAAATCA	AGTACTCGAG
TOR1	TGCATTTTCA	GCTAGTTTTT	CCTATGAGTT	TGTAAAATCA	AGTACTCGAG
WA97001	TGCATTTTCA	GCTAGTTTTT	CCTATGAGTT	TGTAAAATCA	AGTACTCGAG
1979	TGCATTTTCA	GCTAGTTTTT	CCTATGAGTT	TGTAAAATCA	AGTACTCGAG
SH511	TGCATTTTCA	GCTAGTTTTT	CCTATGAGTT	TGTAAAATCA	AGTACTCGAG

Identity 1,160 1,170 1,180 1,190 1,200

B26	AATCTAAAAA	TACAGTCACA	CACTCAACAG	CGTCTCGTAC	ATTATATATT
B37	AATCTAAAAA	TACAGTCACA	CACTCAACAG	CGTCTCGTAC	ATTATATATT
LPCoLN	AATCTAAAAA	TACAGTCACA	CACTCAACAG	CGTCTCGTAC	ATTATATATT
DE177	AATCTAAAAA	TACAGTCACA	CACTCAACAG	CGTCTCGTAC	ATTATATATT
AR39	AATCTAAAAA	TACAGTCACA	CACTCAACAG	CGTCTCGTAC	ATTATATATT
AR39-2	AATCTAAAAA	TACAGTCACA	CACTCAACAG	CGTCTCGTAC	ATTATATATT
CWL029	AATCTAAAAA	TACAGTCACA	CACTCAACAG	CGTCTCGTAC	ATTATATATT
J138	AATCTAAAAA	TACAGTCACA	CACTCAACAG	CGTCTCGTAC	ATTATATATT
TW183	AATCTAAAAA	TACAGTCACA	CACTCAACAG	CGTCTCGTAC	ATTATATATT
IOL207	AATCTAAAAA	TACAGTCACA	CACTCAACAG	CGTCTCGTAC	ATTATATATT
TOR1	AATCTAAAAA	TACAGTCACA	CACTCAACAG	CGTCTCGTAC	ATTATATATT
WA97001	AATCTAAAAA	TACAGTCACA	CACTCAACAG	CGTCTCGTAC	ATTATATATT
1979	AATCTAAAAA	TACAGTCACA	CACTCAACAG	CGTCTCGTAC	ATTATATATT
SH511	AATCTAAAAA	TACAGTCACA	CACTCAACAG	CGTCTCGTAC	ATTATATATT

	1,210	1,220	1,230	1,240	1,250
Identity					
B26	TTAAGGCAGG	ATTGTTCTTA	TGATCCAAGA	GCTCTCAAAG	TAGATGATGA
B37	TTAAGGCAGG	ATTGTTCTTA	TGATCCAAGA	GCTCTCAAAG	TAGATGATGA
LPCoLN	TTAAGGCAGG	ATTGTTCTTA	TGATCCAAGA	GCTCTCAAAG	TAGATGATGA
DE177	TTAAGGCAGG	ATTGTTCTTA	TGATCCAAGA	GCTCTCAAAG	TAGATGATGA
AR39	TTAAGGCAGG	ATTGTTCTTA	TGATCCAAGA	GCTCTCAAAG	TAGATGATGA
AR39-2	TTAAGGCAGG	ATTGTTCTTA	TGATCCAAGA	GCTCTCAAAG	TAGATGATGA
CWL029	TTAAGGCAGG	ATTGTTCTTA	TGATCCAAGA	GCTCTCAAAG	TAGATGATGA
J138	TTAAGGCAGG	ATTGTTCTTA	TGATCCAAGA	GCTCTCAAAG	TAGATGATGA
TW183	TTAAGGCAGG	ATTGTTCTTA	TGATCCAAGA	GCTCTCAAAG	TAGATGATGA
IOL207	TTAAGGCAGG	ATTGTTCTTA	TGATCCAAGA	GCTCTCAAAG	TAGATGATGA
TOR1	TTAAGGCAGG	ATTGTTCTTA	TGATCCAAGA	GCTCTCAAAG	TAGATGATGA
WA97001	TTAAGGCAGG	ATTGTTCTTA	TGATCCAAGA	GCTCTCAAAG	TAGATGATGA
1979	TTAAGGCAGG	ATTGTTCTTA	TGATCCAAGA	GCTCTCAAAG	TAGATGATGA
SH511	TTAAGGCAGG	ATTGTTCTTA	TGATCCAAGA	GCTCTCAAAG	TAGATGATGA

	1,260	1,270	1,280	1,290	1,300
Identity					
B26	ATTTTCGTTAT	TGGGTAGAAA	AAAGGTTGGA	CGCCAAGAAT	CCAGATTCAT
B37	ATTTTCGTTAT	TGGGTAGAAA	AAAGGTTGGA	CGCCAAGAAT	CCAGATTCAT
LPCoLN	ATTTTCGTTAT	TGGGTAGAAA	AAAGGTTGGA	CGCCAAGAAT	CCAGATTCAT
DE177	ATTTTCGTTAT	TGGGTAGAAA	AAAGGTTGGA	CGCCAAGAAT	CCAGATTCAT
AR39	ATTTTCGTTAT	TGGGTAGAAA	AAAGGTTGGA	CGCCAAGAAT	CCAGATTCAT
AR39-2	ATTTTCGTTAT	TGGGTAGAAA	AAAGGTTGGA	CGCCAAGAAT	CCAGATTCAT
CWL029	ATTTTCGTTAT	TGGGTAGAAA	AAAGGTTGGA	CGCCAAGAAT	CCAGATTCAT
J138	ATTTTCGTTAT	TGGGTAGAAA	AAAGGTTGGA	CGCCAAGAAT	CCAGATTCAT
TW183	ATTTTCGTTAT	TGGGTAGAAA	AAAGGTTGGA	CGCCAAGAAT	CCAGATTCAT
IOL207	ATTTTCGTTAT	TGGGTAGAAA	AAAGGTTGGA	CGCCAAGAAT	CCAGATTCAT
TOR1	ATTTTCGTTAT	TGGGTAGAAA	AAAGGTTGGA	CGCCAAGAAT	CCAGATTCAT
WA97001	ATTTTCGTTAT	TGGGTAGAAA	AAAGGTTGGA	CGCCAAGAAT	CCAGATTCAT
1979	ATTTTCGTTAT	TGGGTAGAAA	AAAGGTTGGA	CGCCAAGAAT	CCAGATTCAT
SH511	ATTTTCGTTAT	TGGGTAGAAA	AAAGGTTGGA	CGCCAAGAAT	CCAGATTCAT

	1,310	1,320	1,330	1,340	1,350
Identity					
B26	TAAATGCGTT	CGTTAAAGAG	GTAGGAACTC	ATTATGTCAC	GTCAGTGACT
B37	TAAATGCGTT	CGTTAAAGAG	GTAGGAACTC	ATTATGTCAC	GTCAGTGACT
LPCoLN	TAAATGCGTT	CGTTAAAGAG	GTAGGAACTC	ATTATGTCAC	GTCAGTGACT
DE177	TAAATGCGTT	CGTTAAAGAG	GTAGGAACTC	ATTATGTCAC	GTCAGTGACT
AR39	TAAATGCGTT	CGTTAAAGAG	GTAGGAACTC	ATTATGTCGC	GTCAGTGACT
AR39-2	TAAATGCGTT	CGTTAAAGAG	GTAGGAACTC	ATTATGTCGC	GTCAGTGACT
CWL029	TAAATGCGTT	CGTTAAAGAG	GTAGGAACTC	ATTATGTCGC	GTCAGTGACT
J138	TAAATGCGTT	CGTTAAAGAG	GTAGGAACTC	ATTATGTCGC	GTCAGTGACT
TW183	TAAATGCGTT	CGTTAAAGAG	GTAGGAACTC	ATTATGTCGC	GTCAGTGACT
IOL207	TAAATGCGTT	CGTTAAAGAG	GTAGGAACTC	ATTATGTCGC	GTCAGTGACT
TOR1	TAAATGCGTT	CGTTAAAGAG	GTAGGAACTC	ATTATGTCGC	GTCAGTGACT
WA97001	TAAATGCGTT	CGTTAAAGAG	GTAGGAACTC	ATTATGTCGC	GTCAGTGACT
1979	TAAATGCGTT	CGTTAAAGAG	GTAGGAACTC	AT-----	-----
SH511	TAAATGCGTT	CGTTAAAGAG	GTAGGAACTC	AT-----	-----

	1,360	1,370	1,380	1,390	1,400
Identity					
B26	TA T GGTGGCA	TTGGTTTTCA	AGTGCTAAAG	ATGTC TTATC	TCCAAGTCGA
B37	TA T GGTGGCA	TTGGTTTTCA	AGTGCTAAAG	ATGTC TTATC	TCCAAGTCGA
LPCoLN	TA T GGTGGCA	TTGGTTTTCA	AGTGCTAAAG	ATGTC TTATC	TCCAAGTCGA
DE177	TA T GGTGGCA	TTGGTTTTCA	AGTGCTAAAG	ATGTC TTATC	TCCAAGTCGA
AR39	TACGGTGGCA	TTGGTTTTCA	AGTGCTAAAG	ATGTC TTATC	TCCAAGTCGA
AR39-2	TACGGTGGCA	TTGGTTTTCA	AGTGCTAAAG	ATGTC TTATC	TCCAAGTCGA
CWL029	TACGGTGGCA	TTGGTTTTCA	AGTGCTAAAG	ATGTC TTATC	TCCAAGTCGA
J138	TACGGTGGCA	TTGGTTTTCA	AGTGCTAAAG	ATGTC TTATC	TCCAAGTCGA
TW183	TACGGTGGCA	TTGGTTTTCA	AGTGCTAAAG	ATGTC TTATC	TCCAAGTCGA
IOL207	TACGGTGGCA	TTGGTTTTCA	AGTGCTAAAG	ATGTC TTATC	TCCAAGTCGA
TOR1	TACGGTGGCA	TTGGTTTTCA	AGTGCTAAAG	ATGTC TTATC	TCCAAGTCGA
WA97001	TACGGTGGCA	TTGGTTTTCA	AGTGCTAAAG	ATGTC TTATC	TCCAAGTCGA
1979	-----	-----	-----	-----	-----
SH511	-----	-----	-----	-----	-----

	1,410	1,420	1,430	1,440	1,450
Identity					
B26	GGAGTTAGAG	AAAGAAAAAA	TCTCGATATC	TGTAGCTGCA	GCAAGTTCTT
B37	GGAGTTAGAG	AAAGAAAAAA	TCTCGATATC	TGTAGCTGCA	GCAAGTTCTT
LPCoLN	GGAGTTAGAG	AAAGAAAAAA	TCTCGATATC	TGTAGCTGCA	GCAAGTTCTT
DE177	GGAGTTAGAG	AAAGAAAAAA	TCTCGATATC	TGTAGCTGCA	GCAAGTTCTT
AR39	GGAGTTAGAG	AAAGAAAAAA	TCTCGATATC	TGTAGCTGCA	GCAAGTTCTT
AR39-2	GGAGTTAGAG	AAAGAAAAAA	TCTCGATATC	TGTAGCTGCA	GCAAGTTCTT
CWL029	GGAGTTAGAG	AAAGAAAAAA	TCTCGATATC	TGTAGCTGCA	GCAAGTTCTT
J138	GGAGTTAGAG	AAAGAAAAAA	TCTCGATATC	TGTAGCTGCA	GCAAGTTCTT
TW183	GGAGTTAGAG	AAAGAAAAAA	TCTCGATATC	TGTAGCTGCA	GCAAGTTCTT
IOL207	GGAGTTAGAG	AAAGAAAAAA	TCTCGATATC	TGTAGCTGCA	GCAAGTTCTT
TOR1	GGAGTTAGAG	AAAGAAAAAA	TCTCGATATC	TGTAGCTGCA	GCAAGTTCTT
WA97001	GGAGTTAGAG	AAAGAAAAAA	TCTCGATATC	TGTAGCTGCA	GCAAGTTCTT
1979	-----	-----	-----	-----	-----
SH511	-----	-----	-----	-----	-----

	1,460	1,470	1,480	1,490	1,500
Identity					
B26	TATTA AAAAAG	TAAAACATCG	AACGCGACAG	AGAAAGGTTA	TTCTTCGTAT
B37	TATTA AAAAAG	TAAAACATCG	AACGCGACAG	AGAAAGGTTA	TTCTTCGTAT
LPCoLN	TATTA AAAAAG	TAAAACATCG	AACGCGACAG	AGAAAGGTTA	TTCTTCGTAT
DE177	TATTA AAAAAG	TAAAACATCG	AACGCGACAG	AGAAAGGTTA	TTCTTCGTAT
AR39	TATTA AAAAAG	TAAAACATCG	AACGCGACAG	AGAAAGGTTA	TTCTTCGTAT
AR39-2	TATTA AAAAAG	TAAAACATCG	AACGCGACAG	AGAAAGGTTA	TTCTTCGTAT
CWL029	TATTA AAAAAG	TAAAACATCG	AACGCGACAG	AGAAAGGTTA	TTCTTCGTAT
J138	TATTA AAAAAG	TAAAACATCG	AACGCGACAG	AGAAAGGTTA	TTCTTCGTAT
TW183	TATTA AAAAAG	TAAAACATCG	AACGCGACAG	AGAAAGGTTA	TTCTTCGTAT
IOL207	TATTA AAAAAG	TAAAACATCG	AACGCGACAG	AGAAAGGTTA	TTCTTCGTAT
TOR1	TATTA AAAAAG	TAAAACATCG	AACGCGACAG	AGAAAGGTTA	TTCTTCGTAT
WA97001	TATTA AAAAAG	TAAAACATCG	AACGCGACAG	AGAAAGGTTA	TTCTTCGTAT
1979	-----	-----	-----	-----	-----
SH511	-----	-----	-----	-----	-----

Identity	1,510	1,520	1,530	1,540	1,550
B26	CAGTCGGAAT	CATCAGCTCA	AACAGTATTT	CTTGGTGGAA	CAGTATTACC
B37	CAGTCGGAAT	CATCAGCTCA	AACAGTATTT	CTTGGTGGAA	CAGTATTACC
LPCoLN	CAGTCGGAAT	CATCAGCTCA	AACAGTATTT	CTTGGTGGAA	CAGTATTACC
DE177	CAGTCGGAAT	CATCAGCTCA	AACAGTATTT	CTTGGTGGAA	CAGTATTACC
AR39	CAGTCGGAAT	CATCAGCTCA	AACAGTATTT	CTTGGTGGAA	CAGTATTACC
AR39-2	CAGTCGGAAT	CATCAGCTCA	AACAGTATTT	CTTGGTGGAA	CAGTATTACC
CWL029	CAGTCGGAAT	CATCAGCTCA	AACAGTATTT	CTTGGTGGAA	CAGTATTACC
J138	CAGTCGGAAT	CATCAGCTCA	AACAGTATTT	CTTGGTGGAA	CAGTATTACC
TW183	CAGTCGGAAT	CATCAGCTCA	AACAGTATTT	CTTGGTGGAA	CAGTATTACC
IOL207	CAGTCGGAAT	CATCAGCTCA	AACAGTATTT	CTTGGTGGAA	CAGTATTACC
TOR1	CAGTCGGAAT	CATCAGCTCA	AACAGTATTT	CTTGGTGGAA	CAGTATTACC
WA97001	CAGTCGGAAT	CATCAGCTCA	AACAGTATTT	CTTGGTGGAA	CAGTATTACC
1979	-----	-----	-----	-----	-----
SH511	-----	-----	-----	-----	-----

Identity	1,560	1,570	1,580	1,590	1,600
B26	TGATCTCCAG	CAAGACAAGT	TGGATTTCAA	AGATTGGTCT	GAAAGC G TTC
B37	TGATCTCCAG	CAAGACAAGT	TGGATTTCAA	AGATTGGTCT	GAAAGC G TTC
LPCoLN	TGATCTCCAG	CAAGACAAGT	TGGATTTCAA	AGATTGGTCT	GAAAGC G TTC
DE177	TGATCTCCAG	CAAGACAAGT	TGGATTTCAA	AGATTGGTCT	GAAAGC G TTC
AR39	TGATCTCCAG	CAAGACAAGT	TGGATTTCAA	AGATTGGTCT	GAAAGCATTTC
AR39-2	TGATCTCCAG	CAAGACAAGT	TGGATTTCAA	AGATTGGTCT	GAAAGCATTTC
CWL029	TGATCTCCAG	CAAGACAAGT	TGGATTTCAA	AGATTGGTCT	GAAAGCATTTC
J138	TGATCTCCAG	CAAGACAAGT	TGGATTTCAA	AGATTGGTCT	GAAAGCATTTC
TW183	TGATCTCCAG	CAAGACAAGT	TGGATTTCAA	AGATTGGTCT	GAAAGCATTTC
IOL207	TGATCTCCAG	CAAGACAAGT	TGGATTTCAA	AGATTGGTCT	GAAAGCATTTC
TOR1	TGATCTCCAG	CAAGACAAGT	TGGATTTCAA	AGATTGGTCT	GAAAGCATTTC
WA97001	TGATCTCCAG	CAAGACAAGT	TGGATTTCAA	AGATTGGTCT	GAAAGCATTTC
1979	-----	-----	-----	-----	-----
SH511	-----	-----	-----	-----	-----


Identity	1,610	1,620	1,630	1,640	1,650
B26	CTAATGAGCC	CATTCCTCTA	GCTATTAGTG	TATCTTCAAT	TACAGATCTC
B37	CTAATGAGCC	CATTCCTCTA	GCTATTAGTG	TATCTTCAAT	TACAGATCTC
LPCoLN	CTAATGAGCC	CATTCCTCTA	GCTATTAGTG	TATCTTCAAT	TACAGATCTC
DE177	CTAATGAGCC	CATTCCTCTA	GCTATTAGTG	TATCTTCAAT	TACAGATCTC
AR39	CTAATGAGCC	CATTCCTCTA	GCTATTAGTG	TATCTTCAAT	TACAGATCTC
AR39-2	CTAATGAGCC	CATTCCTCTA	GCTATTAGTG	TATCTTCAAT	TACAGATCTC
CWL029	CTAATGAGCC	CATTCCTCTA	GCTATTAGTG	TATCTTCAAT	TACAGATCTC
J138	CTAATGAGCC	CATTCCTCTA	GCTATTAGTG	TATCTTCAAT	TACAGATCTC
TW183	CTAATGAGCC	CATTCCTCTA	GCTATTAGTG	TATCTTCAAT	TACAGATCTC
IOL207	CTAATGAGCC	CATTCCTCTA	GCTATTAGTG	TATCTTCAAT	TACAGATCTC
TOR1	CTAATGAGCC	CATTCCTCTA	GCTATTAGTG	TATCTTCAAT	TACAGATCTC
WA97001	CTAATGAGCC	CATTCCTCTA	GCTATTAGTG	TATCTTCAAT	TACAGATCTC
1979	--AATGAGCC	CATTCCTCTA	GCTATTAGTG	TATCTTCAAT	TACAGATCTC
SH511	--AATGAGCC	CATTCCTCTA	GCTATTAGTG	TATCTTCAAT	TACAGATCTC

Identity	1,660	1,670	1,680	1,690	1,700
B26	ATAATTCCAG	AACTTTTCCC	TTCTGAAGAT	GCTCAAGTCT	TATCCCAGAA
B37	ATAATTCCAG	AACTTTTCCC	TTCTGAAGAT	GCTCAAGTCT	TATCCCAGAA
LPCoLN	ATAATTCCAG	AACTTTTCCC	TTCTGAAGAT	GCTCAAGTCT	TATCCCAGAA
DE177	ATAATTCCAG	AACTTTTCCC	TTCTGAAGAT	GCTCAAGTCT	TATCCCAGAA
AR39	ATAATTCCAG	AACTTTTCCC	TTCTGAAGAT	GCTCAAGTCT	TATCCCAGAA
AR39-2	ATAATTCCAG	AACTTTTCCC	TTCTGAAGAT	GCTCAAGTCT	TATCCCAGAA
CWL029	ATAATTCCAG	AACTTTTCCC	TTCTGAAGAT	GCTCAAGTCT	TATCCCAGAA
J138	ATAATTCCAG	AACTTTTCCC	TTCTGAAGAT	GCTCAAGTCT	TATCCCAGAA
TW183	ATAATTCCAG	AACTTTTCCC	TTCTGAAGAT	GCTCAAGTCT	TATCCCAGAA
IOL207	ATAATTCCAG	AACTTTTCCC	TTCTGAAGAT	GCTCAAGTCT	TATCCCAGAA
TOR1	ATAATTCCAG	AACTTTTCCC	TTCTGAAGAT	GCTCAAGTCT	TATCCCAGAA
WA97001	ATAATTCCAG	AACTTTTCCC	TTCTGAAGAT	GCTCAAGTCT	TATCCCAGAA
1979	ATAATTCCAG	AACTTTTCCC	TTCTGAAGAT	GCTCAAGTCT	TATCCCAGAA
SH511	ATAATTCCAG	AACTTTTCCC	TTCTGAAGAT	GCTCAAGTCT	TATCCCAGAA

Identity	1,710	1,720	1,730	1,740	1,750
B26	GAAATCAGCT	CTAGGAAAG	TTATTCCTAA	TTATCTAGAG	AGTCACAAGC
B37	GAAATCAGCT	CTAGGAAAG	TTATTCCTAA	TTATCTAGAG	AGTCACAAGC
LPCoLN	GAAATCAGCT	CTAGGAAAG	TTATTCCTAA	TTATCTAGAG	AGTCACAAGC
DE177	GAAATCAGCT	CTAGGAAAG	TTATTCCTAA	TTATCTAGAG	AGTCACAAGC
AR39	GAAATCAGCT	CTAGGACAAG	TTATTCCTAA	TTATCTAGAG	AGTCACAAGC
AR39-2	GAAATCAGCT	CTAGGACAAG	TTATTCCTAA	TTATCTAGAG	AGTCACAAGC
CWL029	GAAATCAGCT	CTAGGACAAG	TTATTCCTAA	TTATCTAGAG	AGTCACAAGC
J138	GAAATCAGCT	CTAGGACAAG	TTATTCCTAA	TTATCTAGAG	AGTCACAAGC
TW183	GAAATCAGCT	CTAGGACAAG	TTATTCCTAA	TTATCTAGAG	AGTCACAAGC
IOL207	GAAATCAGCT	CTAGGACAAG	TTATTCCTAA	TTATCTAGAG	AGTCACAAGC
TOR1	GAAATCAGCT	CTAGGACAAG	TTATTCCTAA	TTATCTAGAG	AGTCACAAGC
WA97001	GAAATCAGCT	CTAGGACAAG	TTATTCCTAA	TTATCTAGAG	AGTCACAAGC
1979	GAAATCAGCT	CTAGGACAAG	TTATTCCTAA	TTATCTAGAG	AGTCACAAGC
SH511	GAAATCAGCT	CTAGGACAAG	TTATTCCTAA	TTATCTAGAG	AGTCACAAGC

Identity	1,760	1,770	1,780	1,790	1,800
B26	CTAAAGAAGA	AGGCCCAAAA	CCAGTCCAGA	TTACTTCTGG	ATTCAATTCA
B37	CTAAAGAAGA	AGGCCCAAAA	CCAGTCCAGA	TTACTTCTGG	ATTCAATTCA
LPCoLN	CTAAAGAAGA	AGGCCCAAAA	CCAGTCCAGA	TTACTTCTGG	ATTCAATTCA
DE177	CTAAAGAAGA	AGGCCCAAAA	CCAGTCCAAA	TTACTTCTGG	ATTCAATTCA
AR39	CTAAAGAAGA	AGGCCCAAAA	CCAGTCCAAA	TTACTTCTGG	ATTCAATTCA
AR39-2	CTAAAGAAGA	AGGCCCAAAA	CCAGTCCAAA	TTACTTCTGG	ATTCAATTCA
CWL029	CTAAAGAAGA	AGGCCCAAAA	CCAGTCCAAA	TTACTTCTGG	ATTCAATTCA
J138	CTAAAGAAGA	AGGCCCAAAA	CCAGTCCAAA	TTACTTCTGG	ATTCAATTCA
TW183	CTAAAGAAGA	AGGCCCAAAA	CCAGTCCAAA	TTACTTCTGG	ATTCAATTCA
IOL207	CTAAAGAAGA	AGGCCCAAAA	CCAGTCCAAA	TTACTTCTGG	ATTCAATTCA
TOR1	CTAAAGAAGA	AGGCCCAAAA	CCAGTCCAAA	TTACTTCTGG	ATTCAATTCA
WA97001	CTAAAGAAGA	AGGCCCAAAA	CCAGTCCAAA	TTACTTCTGG	ATTCAATTCA
1979	CTAAAGAAGA	AGGCCCAAAA	CCAGTCCAAA	TTACTTCTGG	ATTCAATTCA
SH511	CTAAAGAAGA	AGGCCCAAAA	CCAGTCCAAA	TTACTTCTGG	ATTCAATTCA

1,810 1,820 1,830 1,840 1,850

Identity 

B26 TCGTCTTCAG TATTTACGCT TCAAGCAGCA AAAGCTCCTA AGACAGTGTC

B37 TCGTCTTCAG TATTTACGCT TCAAGCAGCA AAAGCTCCTA AGACAGTGTC

LPCoLN TCGTCTTCAG TATTTACGCT TCAAGCAGCA AAAGCTCCTA AGACAGTGTC

DE177 TCGTCTTCAG TATTTACGCT TCAAGCAGCA AAAGCTCCTA AGACAGTGTC

AR39 TCGTCTTCGG TATTTACGCT TCAAGCAGCA AAAGCTCCTA AGACTGTGTC

AR39-2 TCGTCTTCGG TATTTACGCT TCAAGCAGCA AAAGCTCCTA AGACTGTGTC

CWL029 TCGTCTTCGG TATTTACGCT TCAAGCAGCA AAAGCTCCTA AGACTGTGTC

J138 TCGTCTTCGG TATTTACGCT TCAAGCAGCA AAAGCTCCTA AGACTGTGTC

TW183 TCGTCTTCGG TATTTACGCT TCAAGCAGCA AAAGCTCCTA AGACTGTGTC

IOL207 TCGTCTTCGG TATTTACGCT TCAAGCAGCA AAAGCTCCTA AGACTGTGTC


TOR1 TCGTCTTCGG TATTTACGCT TCAAGCAGCA AAAGCTCCTA AGACTGTGTC

WA97001 TCGTCTTCGG TATTTACGCT TCAAGCAGCA AAAGCTCCTA AGACTGTGTC

1979 TCGTCTTCAG TATTTACGCT TCAAGCAGCA AAAGCTCCTA AGACAGTGTC

SH511 TCGTCTTCAG TATTTACGCT TCAAGCAGCA AAAGCTCCTA AGACAGTGTC

1,860 1,870 1,880 1,890 1,900

Identity 

B26 TTTCCCCTAT ATAGATTATT GGTCTACAAT TCCCTATCTT TTCCCCTACTC

B37 TTTCCCCTAT ATAGATTATT GGTCTACAAT TCCCTATCTT TTCCCCTACTC

LPCoLN TTTCCCCTAT ATAGATTATT GGTCTACAAT TCCCTATCTT TTCCCCTACTC

DE177 TTTCCCCTAT ATAGATTATT GGTCTACAAT TCCCTATCTT TTCCCCTACTC

AR39 TTTCCCCTAT ATAGATTATT GGTCTACAAT TCCCTATCTT TTCCCCTACTC

AR39-2 TTTCCCCTAT ATAGATTATT GGTCTACAAT TCCCTATCTT TTCCCCTACTC

CWL029 TTTCCCCTAT ATAGATTATT GGTCTACAAT TCCCTATCTT TTCCCCTACTC

J138 TTTCCCCTAT ATAGATTATT GGTCTACAAT TCCCTATCTT TTCCCCTACTC

TW183 TTTCCCCTAT ATAGATTATT GGTCTACAAT TCCCTATCTT TTCCCCTACTC

IOL207 TTTCCCCTAT ATAGATTATT GGTCTACAAT TCCCTATCTT TTCCCCTACTC


TOR1 TTTCCCCTAT ATAGATTATT GGTCTACAAT TCCCTATCTT TTCCCCTACTC

WA97001 TTTCCCCTAT ATAGATTATT GGTCTACAAT TCCCTATCTT TTCCCCTACTC

1979 TTTCCCCTAT ATAGATTATT GGTCTACAAT TCCCTATCTT TTCCCCTACTC

SH511 TTTCCCCTAT ATAGATTATT GGTCTACAAT TCCCTATCTT TTCCCCTACTC

1,910 1,920 1,930 1,939

Identity 

B26 TTAAAGAAAC TTCAGGTGCT CAACCTCTCT CGTTCTACT

B37 TTAAAGAAAC TTCAGGTGCT CAACCTCTCT CGTTCTACT

LPCoLN TTAAAGAAAC TTCAGGTGCT CAACCTCTCT CGTTCTACT

DE177 TTAAAGAAAC TTCAGGTGCT CAACCTCTCT CGTTCTACT

AR39 TTAAAGAAAC TTCAGGTGCT CAACCTCTCT CGTTCTACT

AR39-2 TTAAAGAAAC TTCAGGTGCT CAACCTCTCT CGTTCTACT

CWL029 TTAAAGAAAC TTCAGGTGCT CAACCTCTCT CGTTCTACT

J138 TTAAAGAAAC TTCAGGTGCT CAACCTCTCT CGTTCTACT

TW183 TTAAAGAAAC TTCAGGTGCT CAACCTCTCT CGTTCTACT

IOL207 TTAAAGAAAC TTCAGGTGCT CAACCTCTCT CGTTCTACT

TOR1 TTAAAGAAAC TTCAGGTGCT CAACCTCTCT CGTTCTACT

WA97001 TTAAAGAAAC TTCAGGTGCT CAACCTCTCT CGTTCTACT

1979 TTAAAGAAAC TTCAGGTGCT CAACCTCTCT CGTTCTACT

SH511 TTAAAGAAAC TTCAGGTGCT CAACCTCTCT CGTTCTACT

