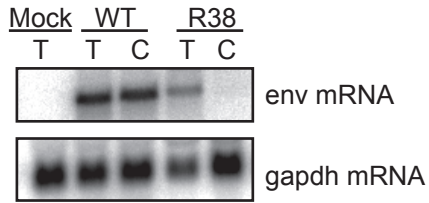
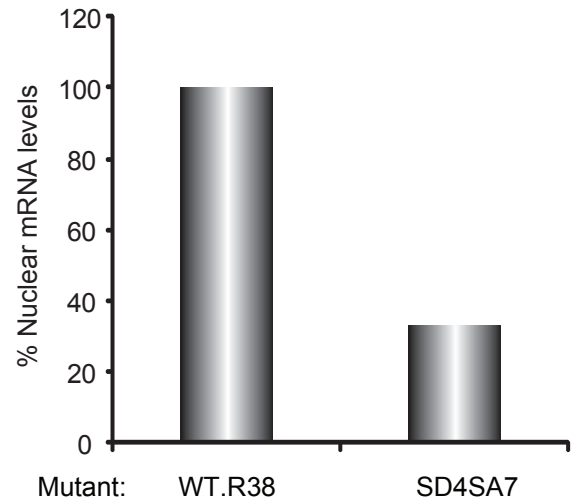


## Supplemental Results



**Figure S1.** The R38 mutation causes nuclear restriction of env mRNA when compared to WT. RNA was harvested from transfected cells using either Trizol (T) or cytoplasmic (C) fractionation of cells using the PARIS™ (Invitrogen) RNA isolation kit.



**Figure S2. Poor nuclear accumulation in the absence of U1 snRNA recruitment by SD4. (A)** Cells were transfected with 4µg pDR-env containing WT.R38 or mutSD4SA7 sequence, 40ng pCMV-Tat and 200ng of pCMV-Rev with either wild-type (+Rev) or R38 (-Rev) sequence. 24 hours post transfection cells were harvested for nuclear RNA fractions. 4kb bands in the nuclear fraction were quantified by converting the file from Image Gauge to a TIFF which was then analysed by KODAK Molecular Imaging (MI) analytical software. Values represent expression normalised to WT.R38.