

## Supporting information

*Ping Zhou<sup>1,2</sup>, Eleonora Altman<sup>1</sup>, Malcolm B. Perry<sup>1</sup>, and Jianjun Li<sup>1\*</sup>*

<sup>1</sup>National Research Council - Institute for Biological Sciences, 100 Sussex Drive, Ottawa, ON, Canada, K1A 0R6.

<sup>2</sup>College of Chemistry and Molecular Sciences, Wuhan University, Wuhan, P. R. China.

Supporting information. Figure S1.

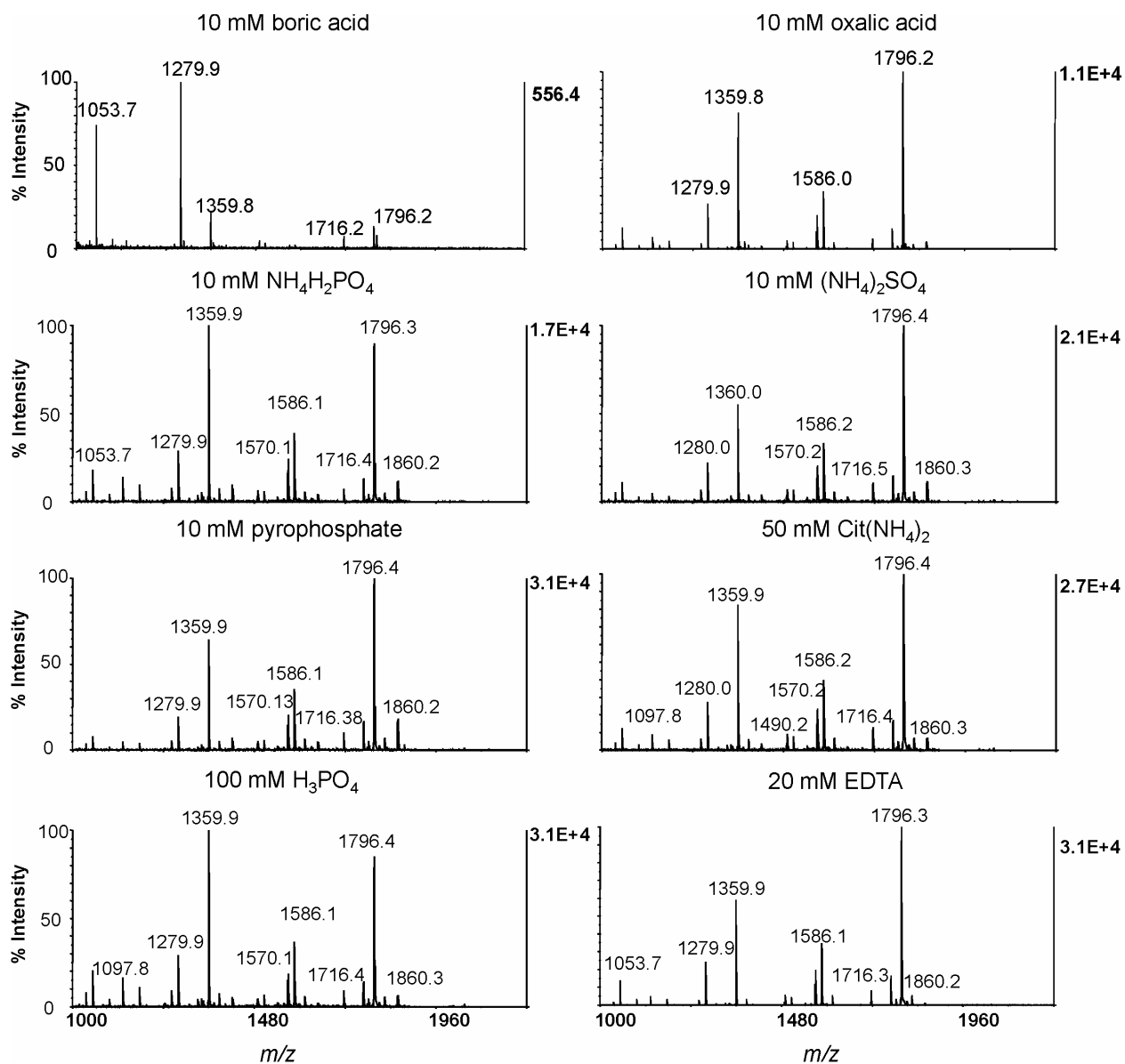
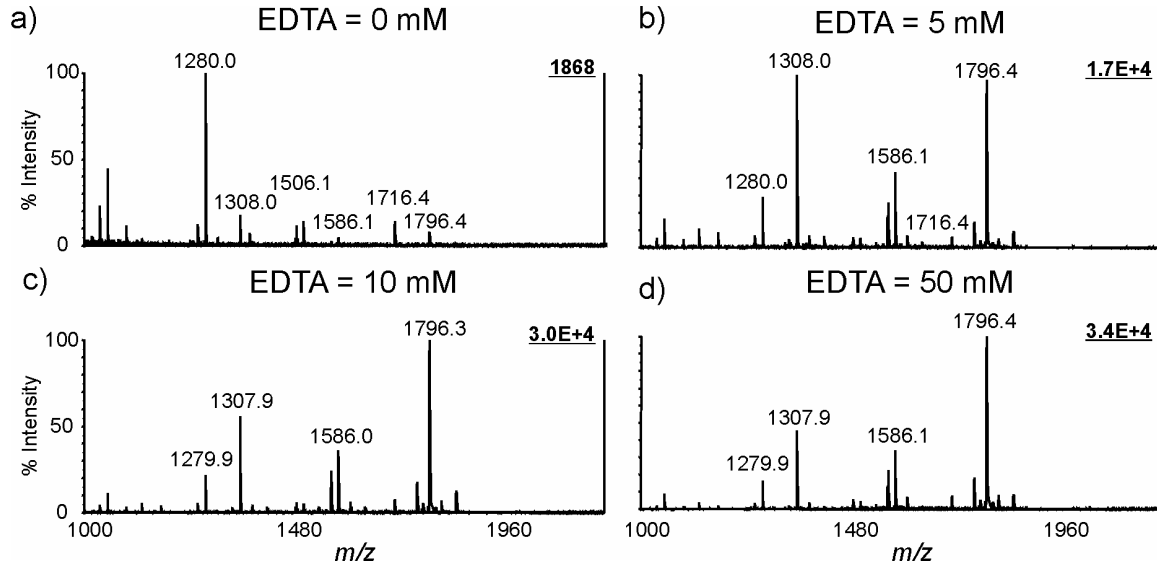


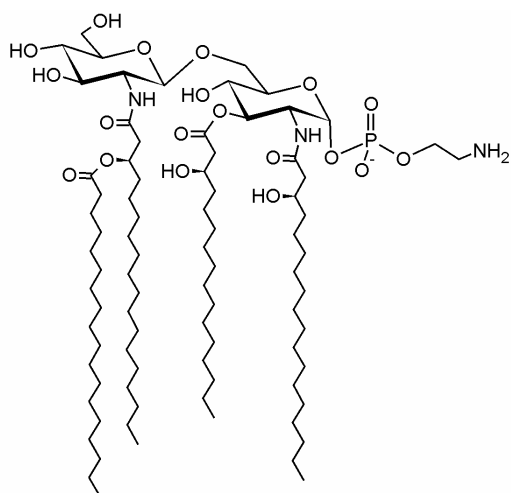
Figure S1. The effects of different additives on the analysis of lipid A from *E. coli* O116 using CMBT as a matrix.

Supporting information. Figure S2

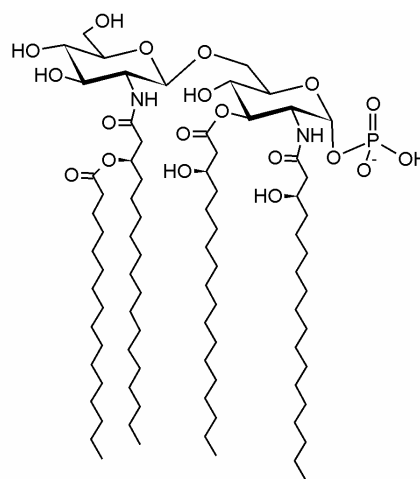


**Figure S2.** MALDI-TOF mass spectra of lipid A from *E. coli* O116 obtained without (a) and with EDTA ammonium, (b) 5 mM, (c) 10 mM, and (d) 50 mM. Other conditions were the same as in Figure 1.

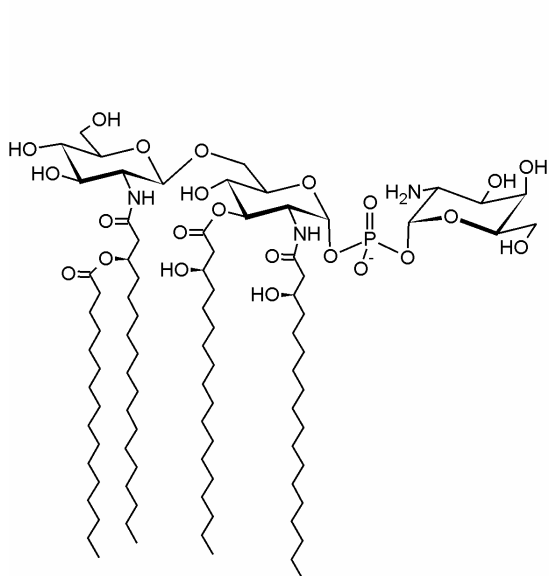
Supporting information. Figure S3.



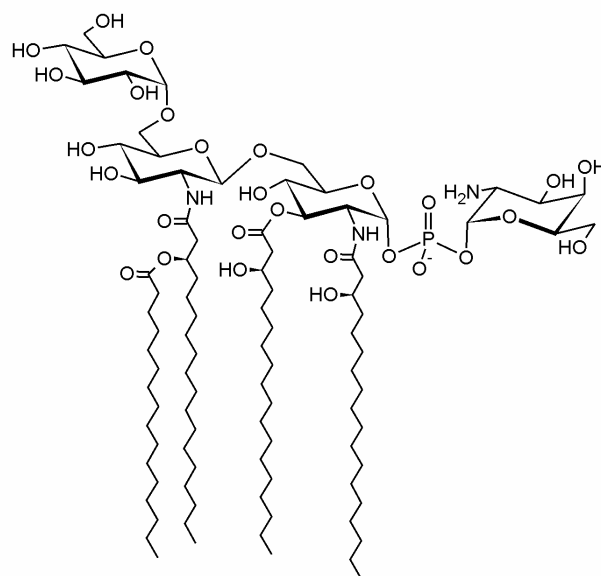
*m/z* 1547.2 (*H. pylori*)



*m/z* 1504.2 (*F. novicida*)



*m/z* 1665.3 (*F. novicida*)



*m/z* 1827.3 (*F. novicida*)

**Figure S3.** Schematic representation of the major lipid A ions in Figure 6.