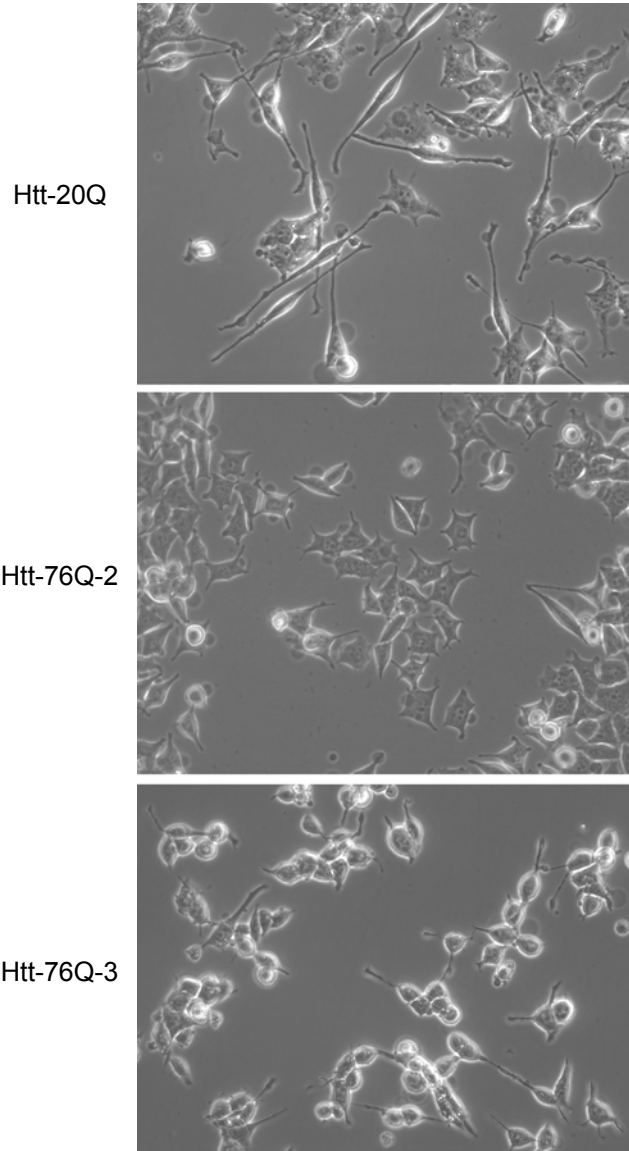
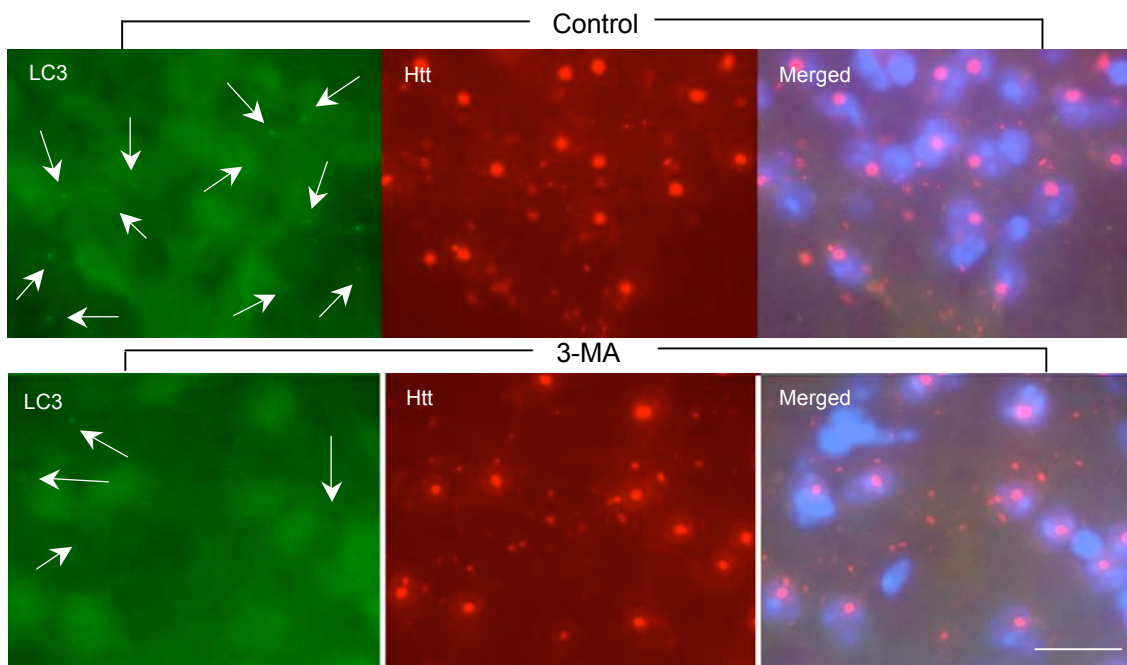


**Supplemental figure 1.** Western blotting of PC12 cells stably expressing RFP-htt-20Q/GFP-htt-20Q (20Q/20Q) or RFP-htt-76Q/GFP-htt-20Q (76Q/20Q in A9 and E12 cell lines). The blot was probed with antibodies to LC3 (upper panel) or tubulin (lower panel). Note that ratios of LC3-I/LC3-II and LC3-II/tubulin are not significantly different between these cell lines.



**Supplemental Figure 2.** Phase images (20X) of stably transfected PC12 cell lines [htt-20Q, htt-76Q-2 (A9) , htt-76Q-3 (E10)] that were treated with lactacystine (5  $\mu$ M) for 15 hr.



**Supplemental Figure 3.** Immunofluorescent staining of the striatum of HD 141Q knock-in mouse brains that were injected with the saline vehicle (Control) or 3-MA. The staining with anti-LC3 revealed some autophagosomal puncta (arrows), which were reduced in the striatum that was injected with the autophagy inhibitor 3-MA. The same brain sections were also stained with the antibody (mEM48) to htt (middle panel) and Hoechst that labels the nucleus in the merged image (right panel). Note that htt aggregates were not increased after the 3-MA injection. Scale bar: 10  $\mu$ m.