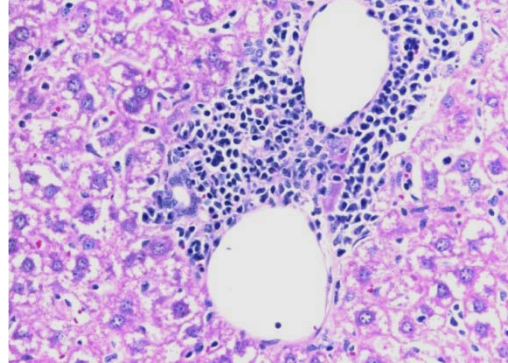
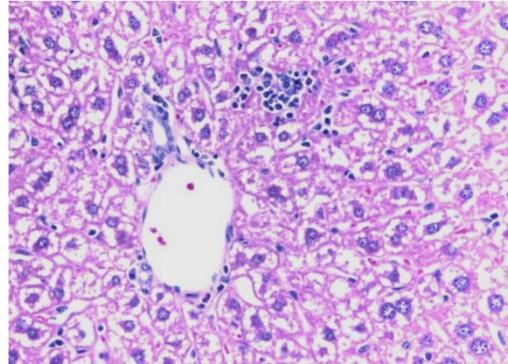


Waggoner Supplemental figure 1

H&E Day 12 p.i.



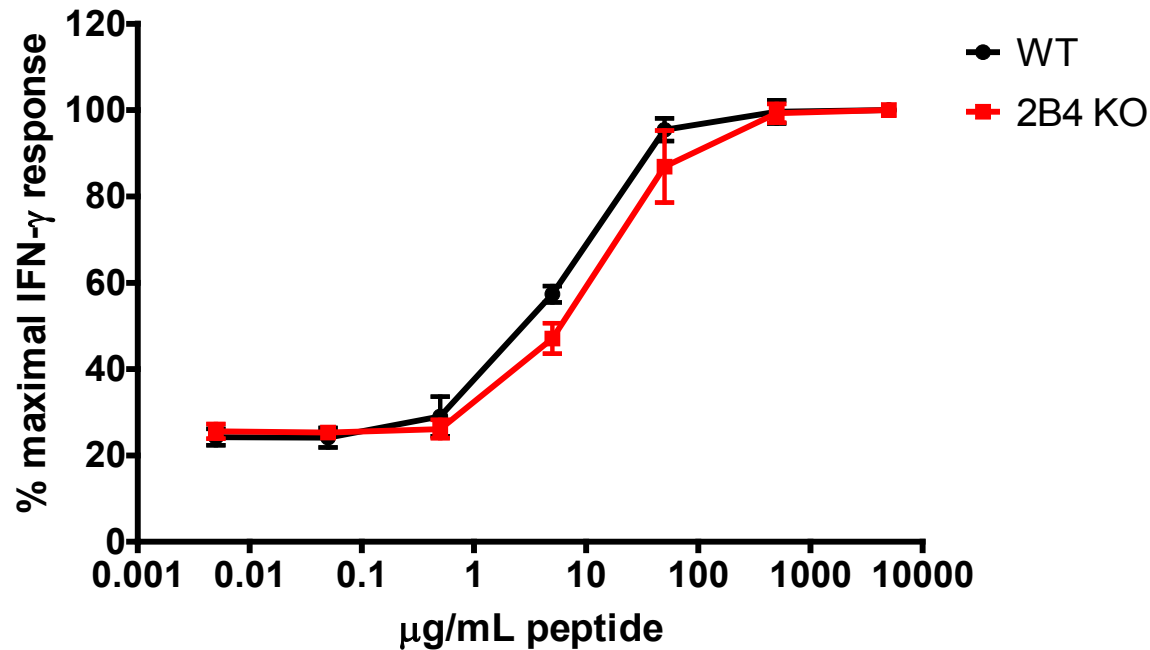
WT



2B4 KO

Supplemental Figure 1. Reduced lymphocytic infiltration of liver demonstrated by H&E staining of formalin-fixed liver sections at day 12 after LCMV clone 13 infection (2×10^6 PFU i.v.).

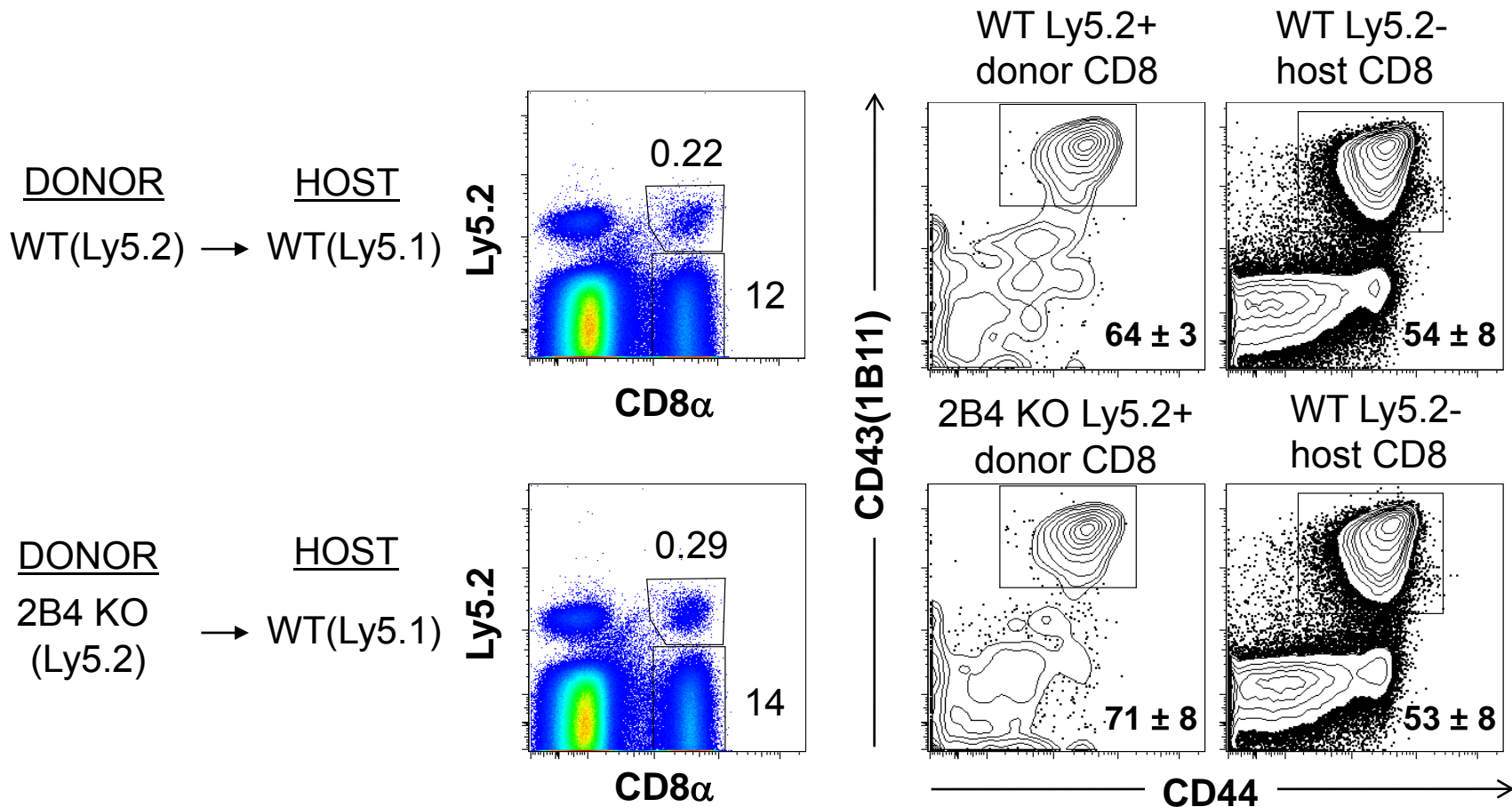
Waggoner Supplemental figure 2



Supplemental Figure 2. Similar functional avidity of GP₃₃₋₄₁-specific CD8 T cells in WT and 2B4 KO spleens at day 9 of LCMV clone 13 infection. Splenocytes were stimulated in vitro with varying concentrations of GP₃₃₋₄₁ peptide and stained intracellularly for expression of IFN- γ . IFN- γ + CD8 T cells are plotted as a proportion of the maximal response.

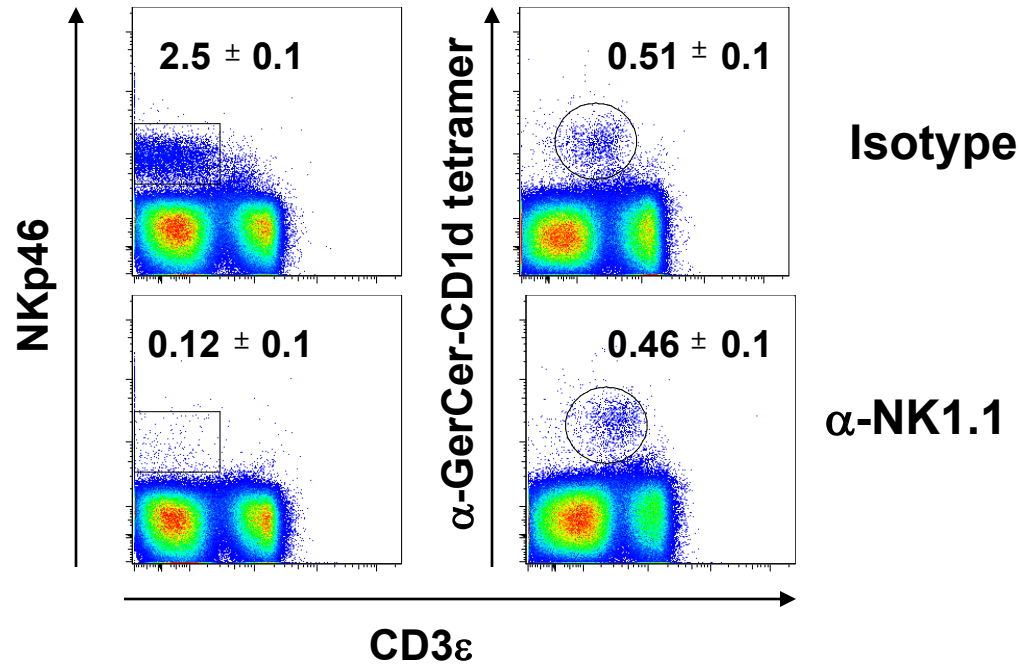
Waggoner Supplemental Figure 3

Spleen, day 6 LCMV clone 13 infection



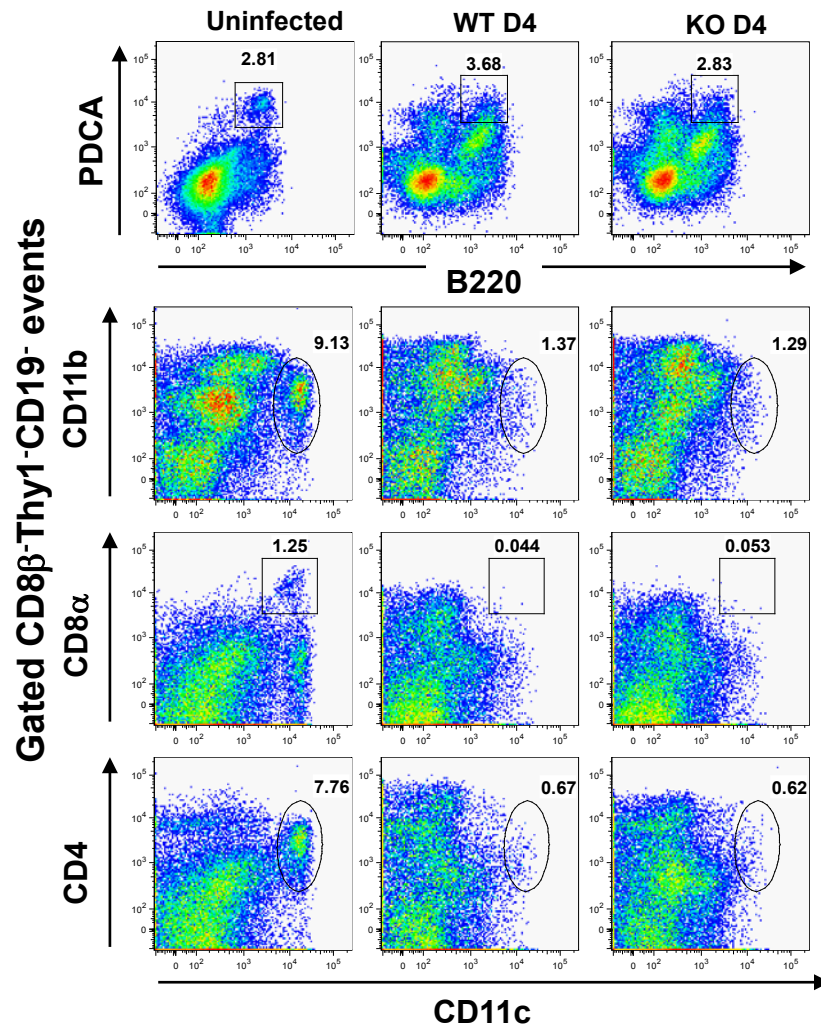
Supplemental Figure 3. Extrinsic role of 2B4 in regulating phenotype of CD8 T cells. Bulk splenocytes (4×10^7) from WT (Ly5.2) or 2B4 KO (Ly5.2) mice were transferred i.v. into WT congenic Ly5.1 mice. Recipient mice were infected with 2×10^6 PFU LCMV clone 13 i.v. Phenotype of donor (Ly5.2) and host (Ly5.1) CD8 T cells was analyzed at day 6 p.i. Representative gating of donor (Ly5.2+) and host (Ly5.2-) CD8α+ T cells is shown in left panel. Expression of CD44 and CD43(1B11) on WT or KO donor (Ly5.2+) CD8 T cells as well as WT host (Ly5.2-) CD8 T cells at day 6 p.i. (n = 4) is shown in right panels. (WT vs 2B4 KO donor, $P > 0.1$).

Waggoner Supplemental figure 4



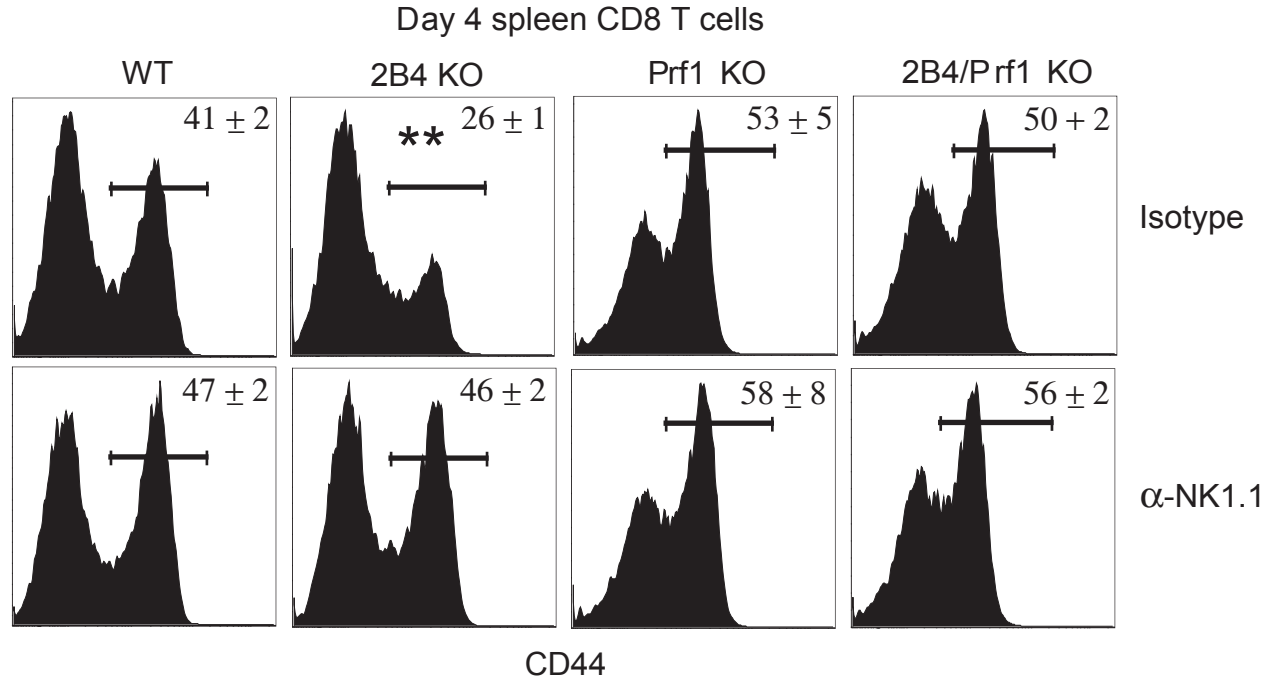
Supplemental Figure 4. A single intraperitoneal injection of 25 μg anti-NK1.1 results in depletion of NKp46⁺CD3⁻ NK cells without affecting numbers of NK T cells (CD3^{int} CD1d-Tet⁺). Representative FACS plots of WT splenocytes one day after anti-NK1.1 or isotype IgG2a administration are shown.

Waggoner Supplemental figure 5



Supplemental Figure 5. Loss of DC populations in spleen of WT and KO mice at day 4 of LCMV clone 13 infection. Splenocytes were gated on CD8 β -neg, Thy1.2-neg, and CD19-neg events. Representative stains for CD4⁺ DC, CD8⁺ DC, CD11b⁺ DC, and plasmacytoid DC (PDCA⁺ B220⁺) are shown.

Waggoner Supplemental Figure 6



Supplemental Figure 6. NK cell- and perforin-dependent loss of CD44^{hi} CD8 T cells during LCMV clone 13 infection of 2B4 KO mice. Representative histograms depict expression of CD44 by splenic CD8 T cells in WT, 2B4 KO, Prf1 KO, and 2B4/Prf1 KO mice at day 4 of LCMV clone 13 infection. Numbers are mean %CD44^{hi} (+ SD) for similarly treated mice (n = 4) in the experiment. **P < 0.01 (two-tailed unpaired Student's T-test).