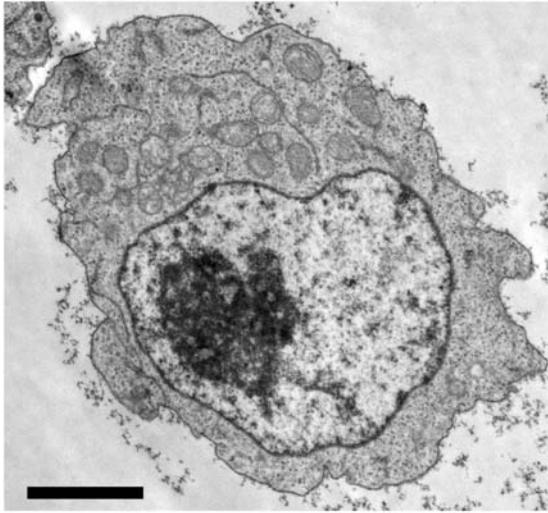
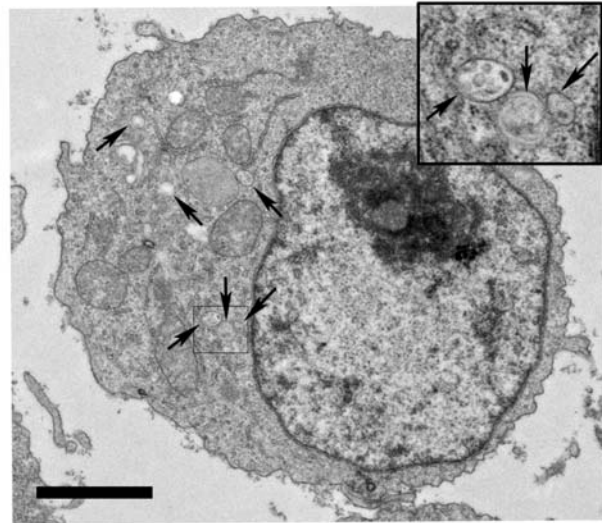


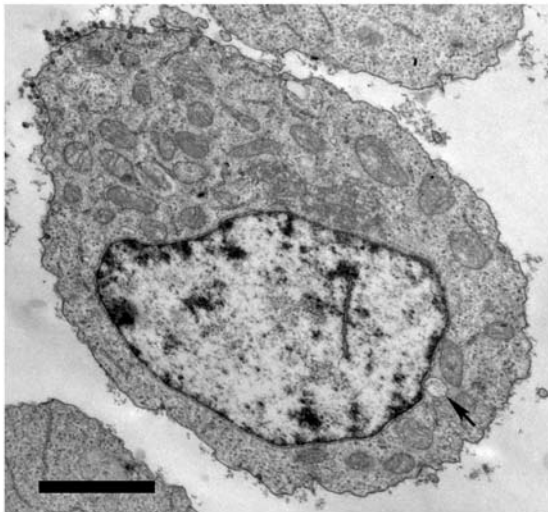
**A wild type**



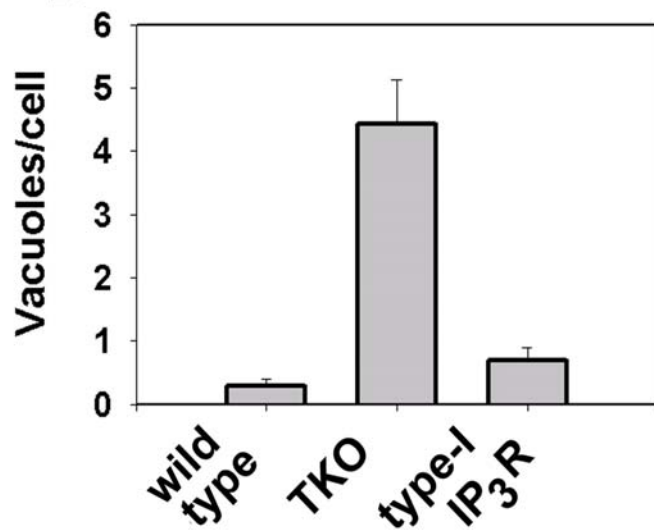
**B TKO**



**C type-I IP<sub>3</sub>R**



**D**



**Figure S1 Electron microscopy of DT40 cell lines**

The processing of DT40 cells for electron microscopy was carried out as described in Ref 23. Representative sections of 20 cells from each cell line were examined for vacuoles containing debris (arrows). These were quantitated in Panel D. The scale bar represents 2 $\mu$ m.