

Supplemental Information

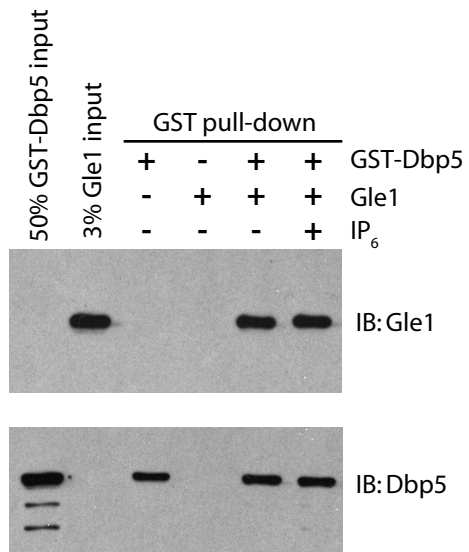
Supplemental Figure Legends:

Supplemental Figure S1: IP₆ does not affect the association of Gle1 and Dbp5 *in vitro*.

Recombinant GST-Dbp5 and Gle1 were incubated with glutathione resin in the presence or absence of IP₆. Resin was washed and SDS sample buffer added. Samples were diluted and immunoblotted using Dbp5 and Gle1 antibodies.

Supplemental Figure S2: Sequence alignment of Gle1 across species.

The sequence alignment of Gle1 protein orthologues from different organisms (excerpted in Figure 2A) is shown in full. Alignment was performed with a modified Clustal-W algorithm. P-values were obtained from a pair-wise comparison with scGle1 for the highest scoring segment, which included up to 81% of the sequences in each pair and included the sequences shown in Figure 2A.



Supplemental Figure S1

S. cerevisiae -----
C. albicans -----
C. tropicalis -----
L. elongisporus -----
S. pombe -----
C. guilliermondii -----
C. lusitanae -----
M. musculus -----
G. gallus -----
R. norvegicus -----
H. sapiens -----
D. rerio -----

S. cerevisiae -----
C. albicans -----
C. tropicalis -----
L. elongisporus -----
S. pombe -----
C. guilliermondii -----
C. lusitanae -----
M. musculus -----
G. gallus -----
R. norvegicus -----
H. sapiens -----
D. rerio -----

S. cerevisiae -----
C. albicans -----
C. tropicalis -----
L. elongisporus -----
S. pombe -----
C. guilliermondii -----
C. lusitanae -----
M. musculus -----
G. gallus -----
R. norvegicus -----
H. sapiens -----
D. rerio -----

S. cerevisiae -----
C. albicans -----
C. tropicalis -----
L. elongisporus -----
S. pombe -----
C. guilliermondii -----
C. lusitanae -----
M. musculus -----
G. gallus -----
R. norvegicus -----
H. sapiens -----
D. rerio -----

S. cerevisiae -----
C. albicans -----
C. tropicalis -----
L. elongisporus -----
S. pombe -----
C. guilliermondii -----
C. lusitanae -----
M. musculus -----
G. gallus -----
R. norvegicus -----
H. sapiens -----
D. rerio -----

S. cerevisiae -----
C. albicans -----
C. tropicalis -----
L. elongisporus -----
S. pombe -----
C. guilliermondii -----
C. lusitanae -----
M. musculus -----
G. gallus -----
R. norvegicus -----
H. sapiens -----
D. rerio -----

S. cerevisiae -----
C. albicans -----
C. tropicalis -----
L. elongisporus -----
S. pombe -----
C. guilliermondii -----
C. lusitanae -----
M. musculus -----
G. gallus -----
R. norvegicus -----
H. sapiens -----
D. rerio -----

<i>C. albicans</i>	1.00E-86
<i>C. tropicalis</i>	4.00E-98
<i>L. elongisporus</i>	8.00E-79
<i>S. pombe</i>	3.00E-53
<i>C. guilliermondii</i>	9.00E-77
<i>C. lusitanae</i>	2.00E-74
<i>M. musculus</i>	7.00E-18
<i>G. gallus</i>	6.00E-20
<i>R. norvegicus</i>	6.00E-18
<i>H. sapiens</i>	3.00E-16
<i>D. rerio</i>	1.00E-21

Supplemental Figure S2