

SUPPLEMENTARY FIGURES AND TABLES

Supplementary Fig. 1. Representative mass spectra of PM4-S (A) and PM5-S (B) obtained in MS2-scan mode and MRM mode by HPLC-MS/MS using electrospray negative ionization. Precursor ion (397.3 m/z) was filtered in MRM mode to generate the total ion chromatogram (TIC). (C) Representative results of TIC from analysis of one oocyte from each experimental group. Taurosulpholithocholic acid (0.5 μ M) was added to the lysis/extraction solution as an internal standard (I.S.). The inset shows the chemical structure of PM4-S and PM5-S.

Supplementary Fig. 2. PM5-S dose response in PHH expressed as proportion of untreated controls. Values represent mean \pm SEM of 3 independent experiments. *P<0.05 for PM5-S treatment groups versus untreated controls.

Supplementary Table 1.

Gene	Forward primer (5'-3')	Reverse primer (5'-3')
<i>L19</i>	CCAAC TCCCGTCAGCAGATC	CAAGGTGTTTTCCGGCATC
<i>NTCP (SLC10A1)</i>	TTTGCCATGACACCACTCTGA	TGCACCGTCCATTGAGGC
<i>OATP1B1 (SLCO1B1)</i>	ACAGCAGAGGCACAACCTTCA	TGCCAAGAACATCTTCAATCCA
<i>OATP1B3 (SLCO1B3)</i>	ACAGCAGAGTCAGCATCTTCAGAG	GGCTGCCAAGAACATCTTGAAT

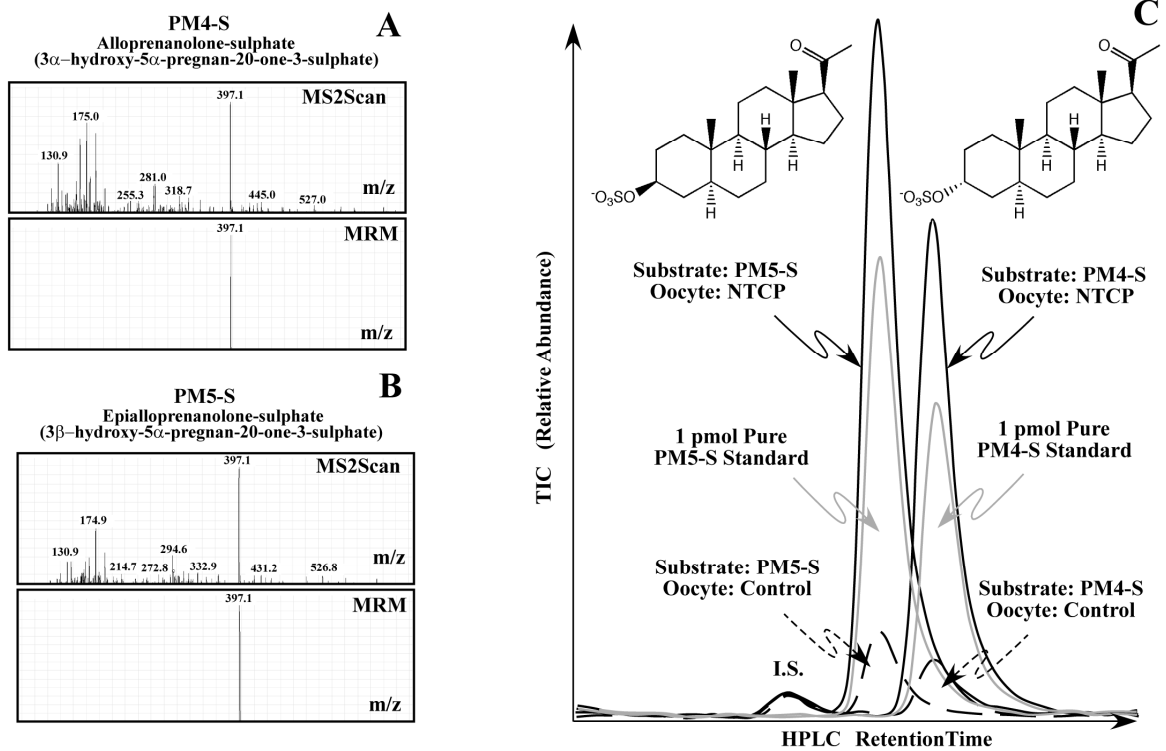
Primer sequences used in this study

Supplementary Table 2.

Sample	<i>NTCP</i> Ct	<i>L19</i> Ct	Normalised (Ct gene of interest - Ct housekeeping control)
SFHL NTCP1	20.26	19.42	0.84
SFHL NTCP2	21.00	20.34	0.66
SFHL NTCP3	20.00	19.39	0.61
SFHL NTCP4	27.30	22.27	5.03
SFHL NTCP5	27.74	26.12	1.62
SFHL NTCP6	19.53	18.81	0.72
PHH NTCP1	24.37	19.14	5.23
PHH NTCP2	24.15	20.42	3.73
PHH NTCP3	25.77	20.07	5.70
PHH NTCP4	24.31	19.26	5.05
PHH NTCP5	20.50	17.87	2.63
PHH NTCP6	23.06	19.96	3.10
Sample	<i>OATP1B1</i> Ct	<i>L19</i> Ct	Normalised (Ct gene of interest - Ct housekeeping control)
SFHL OATP1B1 1	20.39	21.92	-1.53
SFHL OATP1B1 2	15.21	16.81	-1.59
SFHL OATP1B1 3	15.74	17.03	-1.29
PHH OATP1B1 1	25.91	19.89	6.02
PHH OATP1B1 2	24.67	19.05	5.62
PHH OATP1B1 3	23.91	18.88	5.03
PHH OATP1B1 4	24.29	19.38	4.91
PHH OATP1B1 5	18.40	14.81	3.59
PHH OATP1B1 6	18.78	16.76	2.02
PHH OATP1B1 7	17.80	14.01	3.79
Sample	<i>OATP1B3</i> Ct	<i>L19</i> Ct	Normalised (Ct gene of interest - Ct housekeeping control)
SFHL OATP1B3 1	22.14	23.52	-1.39
SFHL OATP1B3 2	25.44	28.71	-3.27
SFHL OATP1B3 3	31.48	25.31	6.17
SFHL OATP1B3 4	26.81	21.92	4.89
PHH OATP1B3 1	26.02	20.50	5.52
PHH OATP1B3 2	25.41	20.97	4.45
PHH OATP1B3 3	30.86	27.62	3.24
PHH OATP1B3 4	25.89	21.44	4.45
PHH OATP1B3 5	30.54	24.67	5.87

Raw Ct values for SFHL and PHH *L19*, *NTCP*, *OATP1B1* and *OATP1B3*. Basic normalised values are calculated as Ct gene of interest minus the *L19* Ct value. The smaller the normalised the value, the higher the expression level.

Supplementary Figure 1



Supplementary figure 2

