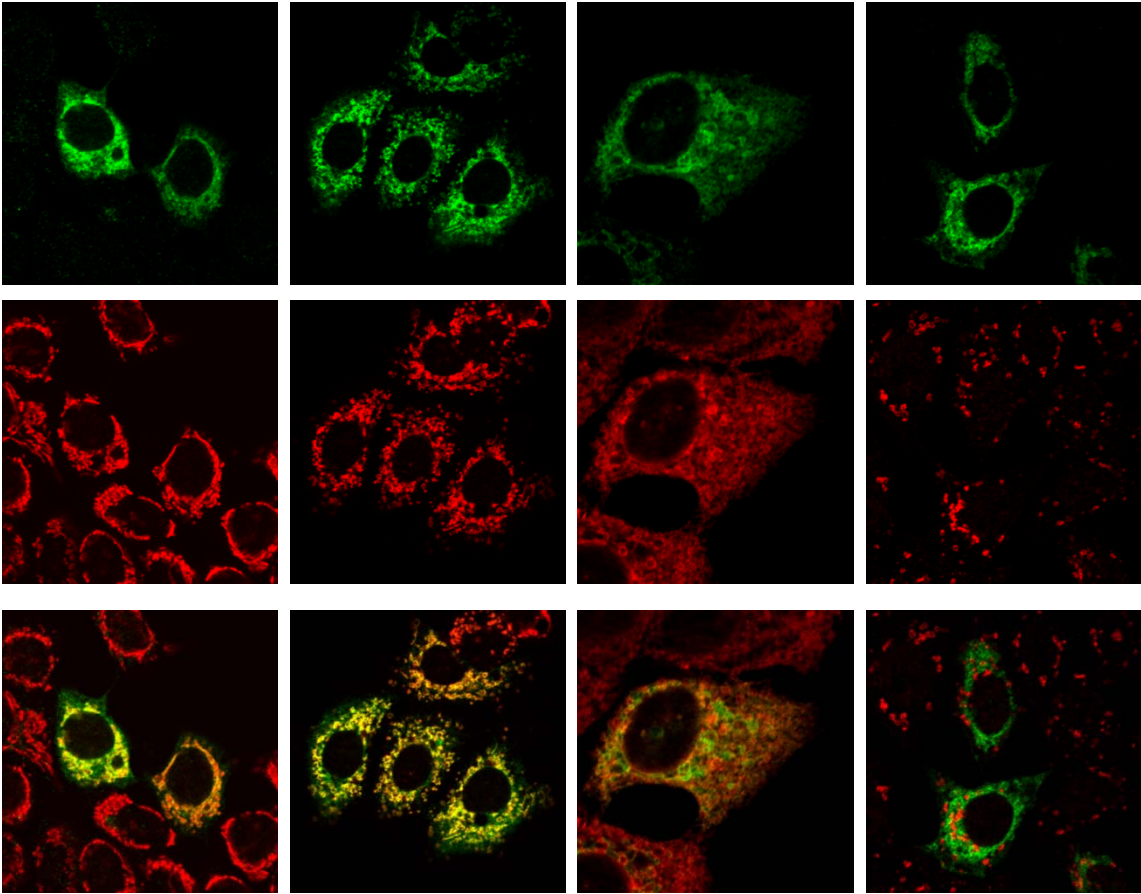


Suppl. Fig. 1A MCF-7 cell

MA-nSMase MA-nSMase MA-nSMase MA-nSMase



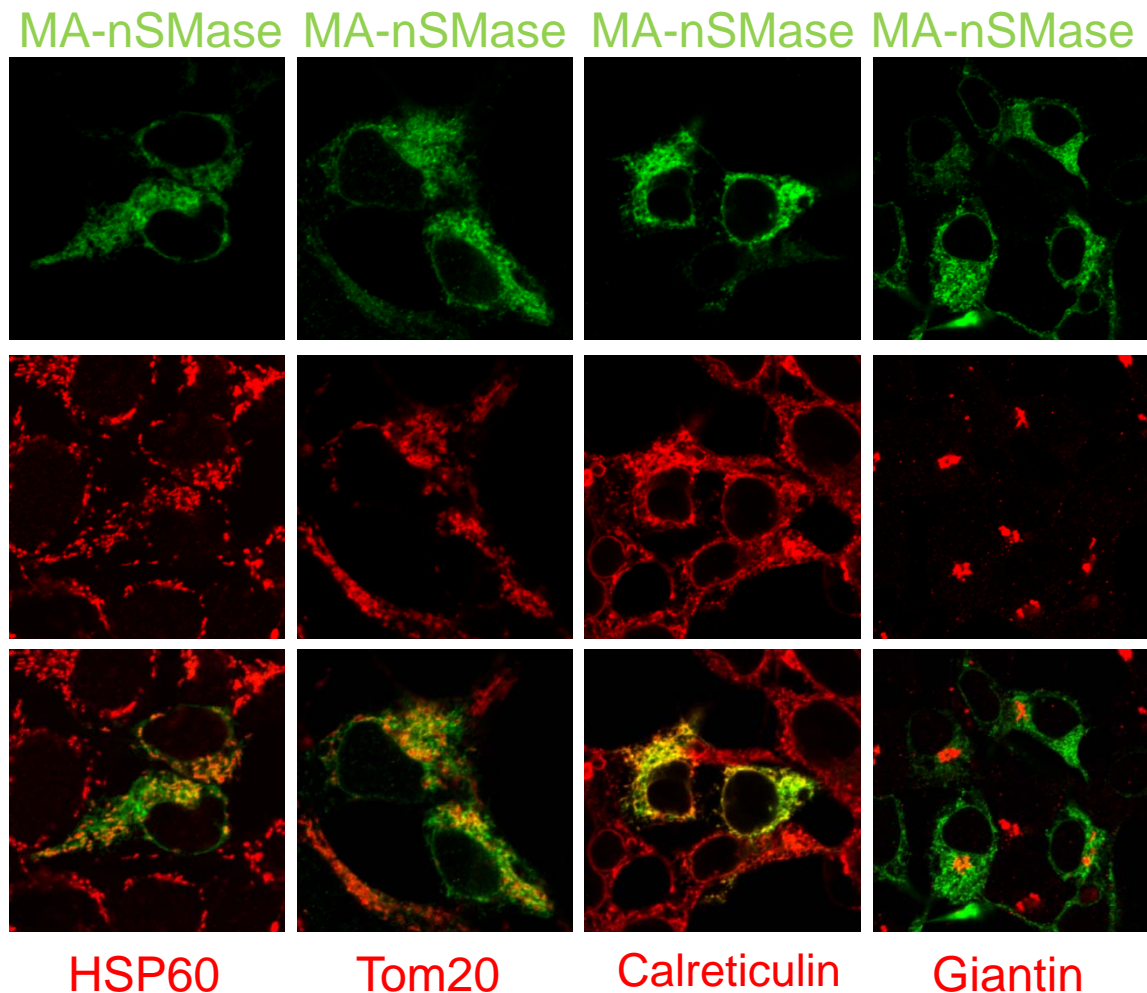
HSP60

Tom20

Calreticulin

Giantin

Suppl. Fig. 1B HEK293 cell



Supplemental Figure 1: Subcellular localization of MA-nSMase. MCF-7 (panel A) and HEK293 (panel B) cells were transfected with V5-tagged MA-nSMase. After 24 h, cells were fixed and co-stained for V5 (green, top panel) for MA-nSMase and antibodies against various subcellular markers (red, middle panel), including HSP60 and Tom20 (mitochondrial markers), calreticulin (ER marker) and giantin (Golgi marker). Cells were visualized by confocal microscopy. Merged images (lower panel) were generated by superimposing upper and middle panels. Colocalization signals were observed as yellow or orange.