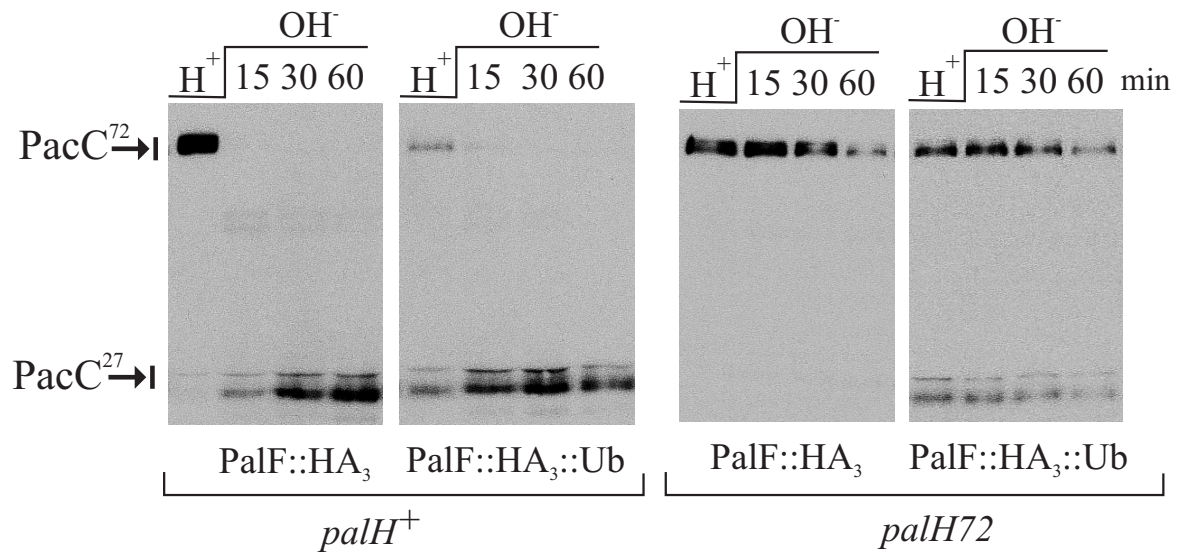


Supplementary Fig. 1: pH and PalH independent signalling in a strain overexpressing PalF-HA3-Ub compared to its wild-type control overexpressing PalF-HA3. Cells were cultured at acid pH before being shifted to alkaline pH. In the PalF-HA3 strain, processing is strictly dependent on alkaline pH and PalH. In the PalF-HA3-Ub strain, significant processing takes place at acidic pH even in the absence of PalH.



Supplementary Table I: Detailed genotypes of strains used in this work

strain number	complete genotype
MAD1288	<i>palH72; argB2[argB*-alcA^P::palH::gfp]; pyroA4; pantoB100</i>
MAD1315	<i>wA2; inoB2; paC900</i>
MAD1348	<i>pabaA1 palH72 yA2; inoB2; pacC900</i>
MAD1730	<i>pyroA4 inoB2 ΔnkuA; pacC900</i>
MAD1732	<i>pyrG89; wA4; inoB2 pyroA4; pacC900</i>
MAD2226	<i>pabaA1 yA2; palC::gfp-pyrG^{fum}; palF15</i>
MAD2227	<i>yA2; palC::gfp-pyrG^{fum}; palF15</i>
MAD2228	<i>yA2; palC::gfp-pyrG^{fum}; pantoB100</i>
MAD2352	<i>pyrG89; wA4; inoB2 ΔnkuA pyroA4; pacC900; palF::HA₃-pyrG^{fum}</i>
MAD2353	<i>pyrG89; wA4; inoB2 ΔnkuA pyroA4; pacC900; palF::HA₃::Ub-pyrG^{fum}</i>
MAD2356	<i>pyrG89; wA4; inoB2 pyroA4 ΔnkuA; pacC900; palF::HA₃::Ub^{K48R}-pyrG^{fum}</i>
MAD2359	<i>palH72; argB2::[argB*-alcA^P::palH::gfp]; pyroA4::[pyroA*-alcA^P::palF::FLAG]; pantoB100</i>
MAD2376	<i>wA4; argB2::[argB*-alcA^P::palH::gfp]; pyroA4; pantoB100</i>
MAD2486	<i>inoB2 ΔnkuA pyroA4::[pyroA*-gpdA^{mini}::palF::HA₃]; pacC900</i>
MAD2491	<i>inoB2 ΔnkuA pyroA4::[pyroA*-gpdA^{mini}::palF::HA₃::Ub]; pacC900</i>
MAD2493	<i>inoB2 ΔnkuA pyroA4::[pyroA*-gpdA^{mini}::palF::HA₃::Ub^{K48R}]; pacC900</i>
MAD2705	<i>palH72; ΔnkuA pyroA4::[pyroA*-gpdA^{mini}::palF::HA₃]; pacC900</i>
MAD2714	<i>palH72; inoB2 ΔnkuA pyroA4::[pyroA*-gpdA^{mini}::palF::HA₃::Ub]; pacC900</i>
MAD2720	<i>palH72; pyroA4::[pyroA*-gpdA^{mini}::palF::HA₃::Ub^{K48R}]; pacC900</i>
MAD2845	<i>pyrG89?; inoB2 palC::gfp-pyrG^{fum} pyroA4::[pyroA*-gpdA^{mini}::palF::HA₃]; pacC900?</i>
MAD2846	<i>pyrG89? palC::gfp-pyrG^{fum} pyroA4::[pyroA*-gpdA^{mini}::palF::HA₃]; pacC900?</i>
MAD2488	<i>pyrG89? inoB2 palC::gfp-pyrG^{fum} pyroA4::[pyroA*-gpdA^{mini}::palF::HA₃::Ub^{K48R}]; pacC900?</i>
MAD2489	<i>pyrG89? palC::gfp-pyrG^{fum} pyroA4::[pyroA*-gpdA^{mini}::palF::HA₃::Ub^{K48R}]; pacC900?</i>
MAD2996	<i>palH72; argB2[argB*-alcA^P::palH::gfp]; pyroA4::[pyroA*-alcA^P::palF-HA₃]; pantoB100</i>
MAD3014	<i>palH72 pyrG89? pabaA1; wA; inoB2 ΔnkuA? pacC900; palF:HA₃::pyrG^{fum}</i>
MAD3023	<i>pyrG89?; palC::gfp-pyrG^{fum} pyroA4; pacC900?</i>