

Supporting Information

Dolabellane-Type Diterpenoids with Antiprotozoan Activity from a Southwestern Caribbean Gorgonian Octocoral of the Genus *Eunicea*

Xiaomei Wei, Abimael D. Rodríguez*, Peter Baran and Raphael G. Raptis

Department of Chemistry, University of Puerto Rico, P.O. Box 23346, U. P. R. Station, San Juan, PR 00931-3346

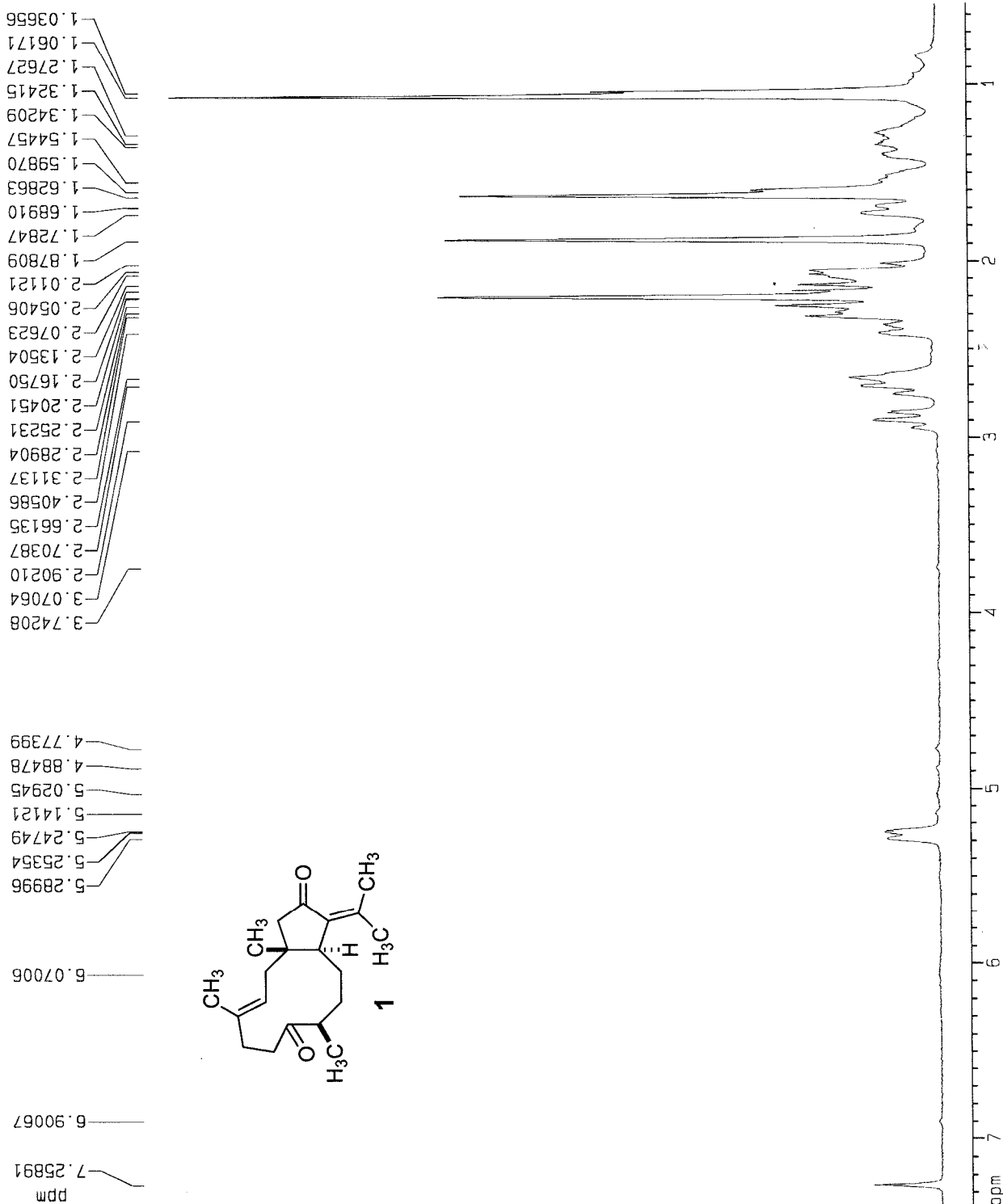
Table of Contents	Page
(a) NMR (^1H and ^{13}C) spectra for dolabellanone 1	2–3
(b) NMR (^1H and HMQC) spectra for dolabellanone 2	4–5
(c) NMR (^1H and ^{13}C) spectra for dolabellanone 3	6–7
(d) NMR (^{13}C and HMQC) spectra for dolabellanone 4	8–9
(e) NMR (^1H and ^{13}C) spectra for dolabellanone 5	10–11
(f) NMR (^1H and ^{13}C) spectra for dolabellanone 6	12–13
(g) NMR (^1H and ^{13}C) spectra for dolabellanone 7	14–15
(h) NMR (^1H and ^{13}C) spectra for dolabellanone 8	16–17
(i) NMR (^1H and ^{13}C) spectra for dolabellanone 9	18–19
(j) NMR (^1H and ^1H – ^1H COSY) spectra for dolabellanone 10	20–21
(k) Photograph of the voucher specimen <i>Eunicea</i> sp.2	22

Current Data Parameters
 NAME Esp20h200a9-3
 EXPNO 1
 PROCNO 1

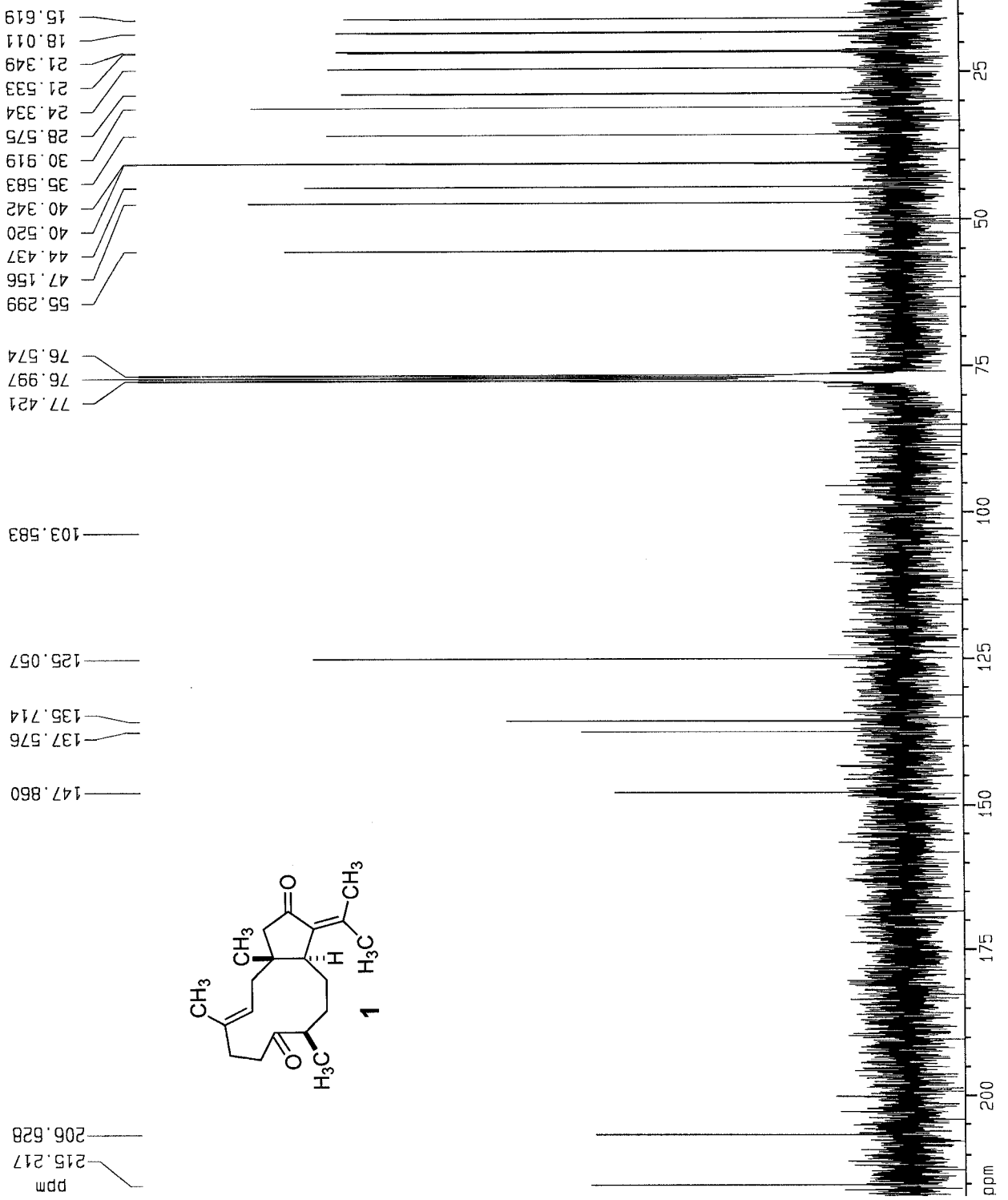
F2 - Acquisition Parameters
 Date_ 20020816
 Time 20.53
 INSTRUM gpc300
 PROBHD 5 mm Multinu
 PULPROG zg30
 TD 32768
 SOLVENT CDCl3
 NS 16
 DS 2
 SWH 4058.442 Hz
 FIDRES 0.123854 Hz
 AQ 4.0370674 sec
 RG 574.7
 DW 123.200 usec
 DE 5.00 usec
 TE 300.0 K
 D1 1.00000000 sec
 P1 11.00 usec
 DE 5.00 usec
 SF01 300.1315818 MHz
 NUC1 1H
 PL1 -4.00 dB

F2 - Processing parameters
 SI 16384
 SF 300.1300062 MHz
 EM EM
 WDW 0
 SSB 0
 LB 0.30 Hz
 GB 0
 PC 1.00

1D NMR plot parameters
 CX 20.00 cm
 F1P 7.381 ppm
 F1 2215.25 Hz
 F2P 0.536 ppm
 F2 160.80 Hz
 PPMCM 0.34226 ppm/cm
 HZCM 102.72213 Hz/cm



rpar: C13CPD



Current Data Parameters
NAME Esp2bn20bb9-3
EXPNO 2
PROCNO 1

F2 - Acquisition Parameters

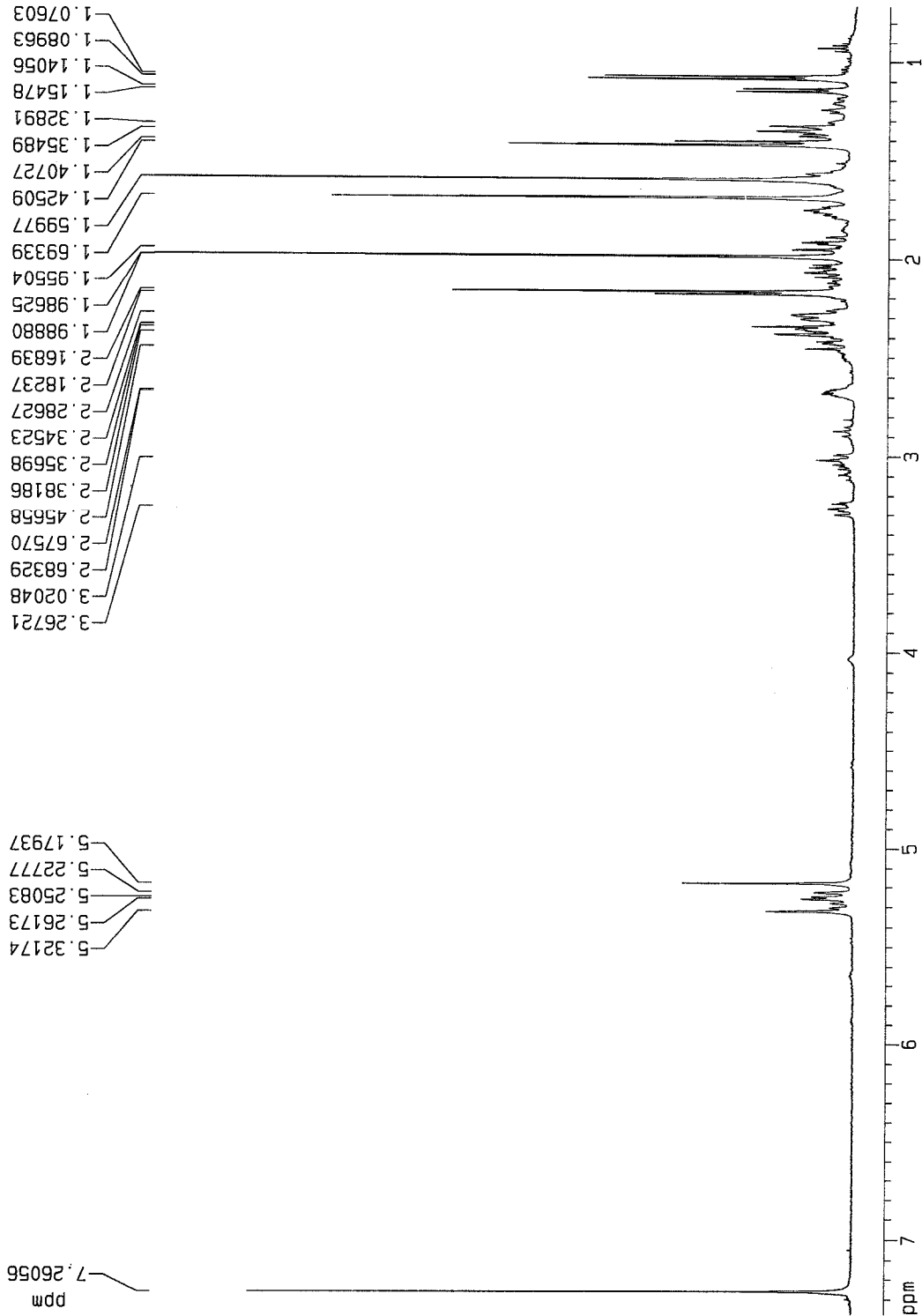
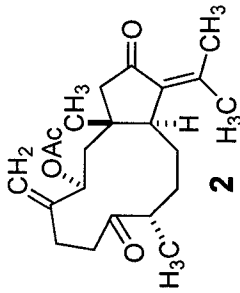
Date_ 20020816
Time 22.37
INSTRUM dpx300
PROBHD 5 mm Multinu
PULPROG zgpg30
TD 65536
SOLVENT CDCl3
NS 2114
DS 2
SWH 17605.635 Hz
FIDRES 0.268641 Hz
AQ 1.8612725 sec
RG 4597.6
DM 28.400 usec
DE 5.00 usec
TE 300.0 K
D12 0.00002000 sec
PL13 17.00 dB
D1 1.00000000 sec
waltz16
CPDPRG2
PCPD2 105.00 usec
SF02 300.1312005 MHz
NUC2 1H
PL2 -4.00 dB
PL12 17.00 dB
P1 8.00 usec
DE 5.00 usec
SF01 75.4756682 MHz
NUC1 13C
PL1 -2.00 dB
D11 0.03000000 sec

F2 - Processing parameters

SI 32768
SF 75.4677510 MHz
WDW EM
SSB 0
LB 1.00 Hz
GB 0
PC 1.40

1D NMR plot parameters

CX 20.00 cm
F1P 217.064 ppm
F1 16381.32 Hz
F2P 12.773 ppm
F2 963.96 Hz
PNUC1 10.21454 ppm/cm
HZCM 770.86810 Hz/cm



Current Data Parameters
 NAME e36b34a10
 EXPNO 1
 PROCNO 1

F2 - Acquisition Parameters

Date_ 20030104
 Time 10.26
 INSTRUM spect
 PROBHD 5 mm Multinu
 PULPROG zg30
 TD 32768
 SOLVENT CDCl3
 NS 16
 DS 2
 SWH 7246.377 Hz
 FIDRES 0.221142 Hz
 AQ 2.2610421 sec
 RG 456.1
 DW 69.000 usec
 DE 6.00 usec
 TE 300.0 K
 D1 1.0000000 sec
 P1 10.50 usec
 SFO1 500.1328885 MHz
 NUC1 1H
 PL1 0.00 dB

F2 - Processing parameters

SI 16384
 SF 500.1300128 MHz
 WDW EM
 SSB 0
 LB 0.30 Hz
 GB 0
 PC 1.00

1D NMR plot parameters

CX 20.00 cm
 F1P 7.376 ppm
 F1 3688.80 Hz
 F2P 0.716 ppm
 F2 358.04 Hz
 PPMCM 0.33299 ppm/cm
 HZCM 166.53828 Hz/cm

Current Data Parameters
 EXPNO 3
 PROCNO 1

F2 - Acquisition Parameters

Date_ 20030104
 Time 13.19
 INSTRUM spect
 PROBHD 5 mm Multinu
 PULPROG invltp
 TO 1024
 SOLVENT CDCl3
 NS 8
 DS 32
 SWH 7246.377 Hz
 FIDRES 7.076540 Hz
 AQ 0.0707660 sec
 RG 4597.6
 DM 69.000 usec
 DE 6.00 usec
 TE 300.0 K
 D1 1.25000000 sec
 D11 10.50 usec
 D12 500.1328885 MHz
 SF01 0.00 dB
 NUC1 1H
 PL1 0.00 dB
 D2 0.00345000 sec
 PL2 2.00 dB
 P2 21.00 usec
 P4 17.00 usec
 SF02 125.7705955 MHz
 NUC2 13C
 D7 0.40000001 sec
 P3 8.50 usec
 D0 0.00003000 sec
 PL12 20.00 dB
 CPDPRG2 gprg
 PCPD2 65.00 usec
 TMO 0.00000825 sec

F1 - Acquisition Parameters

NUC 4
 TD 256
 SF01 125.771 MHz
 FIDRES 118.372416 Hz
 SW 240.588 ppm

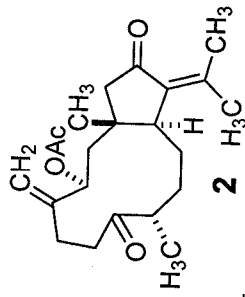
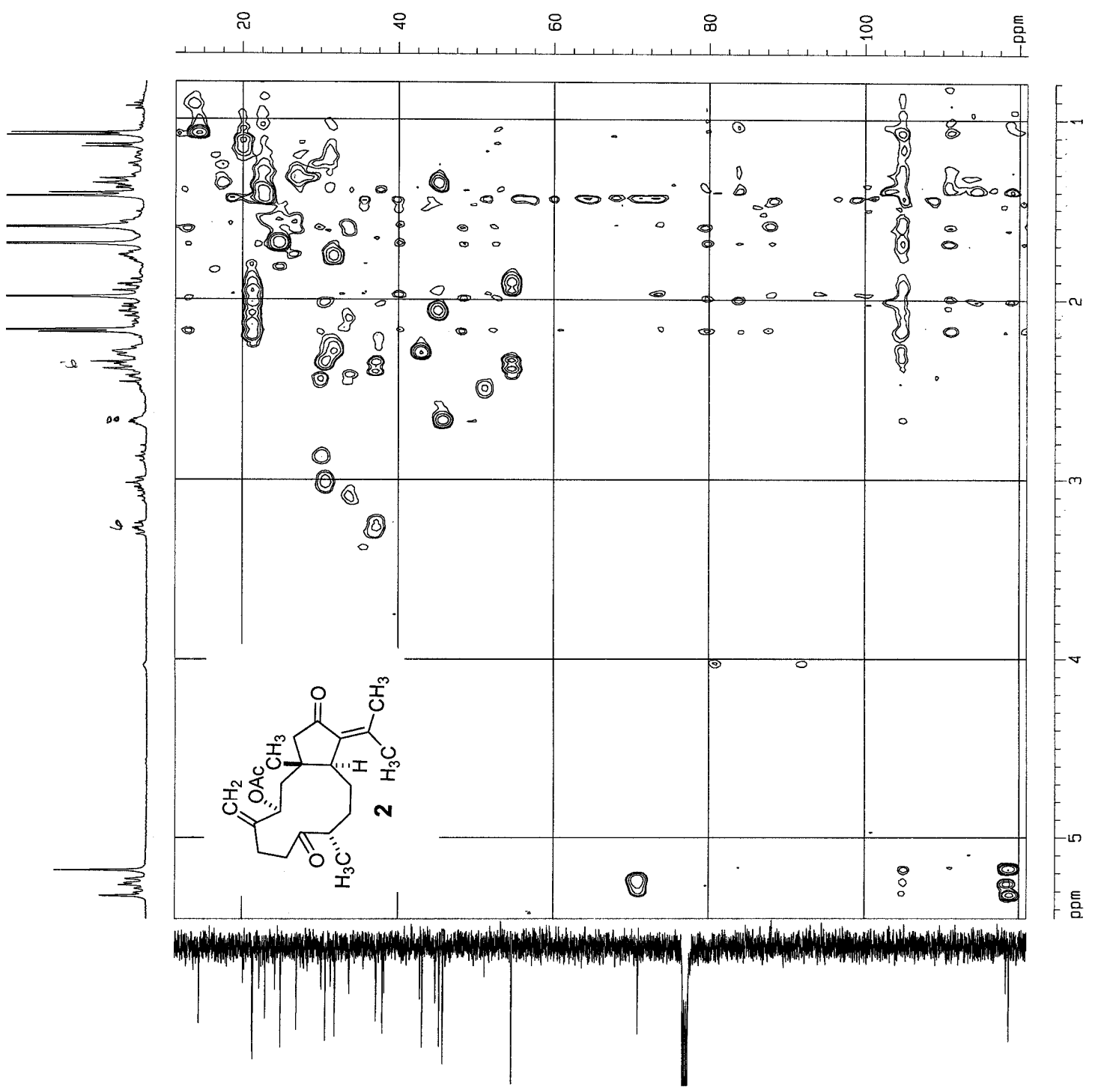
F2 - Processing Parameters

SI 500.1300155 MHz
 LOCK 1024
 WCM 0.511 Hz
 SSB 2
 LB 0.00 Hz
 GB 0
 PC 1.40

F1 - Processing Parameters

SI 512
 TP1 125.7577906 MHz
 SINE 2
 LB 0.00 Hz
 GB 0

2D NMR plot parameters
 CX2 15.00 cm
 CX1 15.00 cm
 F2PLO 5.461 ppm
 F2LO 2726.43 Hz
 F2PHI 0.796 ppm
 F2H1 388.25 Hz
 F1PLO 121.004 ppm
 F1LO 15217.25 Hz
 F1PHI 11.347 ppm
 F1H1 1427.01 Hz
 F2PHI0M 0.31034 ppm/cm
 F2PHI 155.21211 Hz/cm
 F1PHI0M
 F1PHI



Current Data Parameters
NAME e24h37
EXPNO 1
PROCNO 1

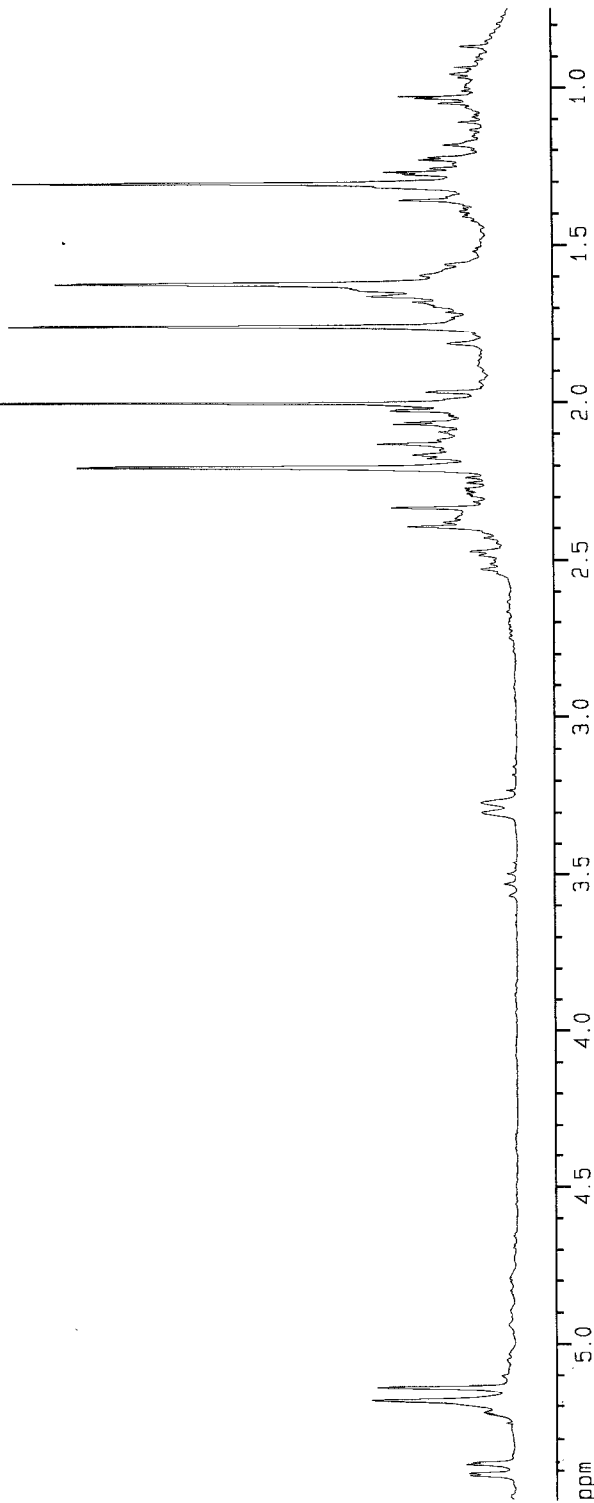
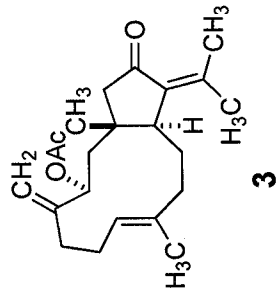
F2 - Acquisition Parameters

Date_ 20021108
Time 10.12
INSTRUM dox300
PROBHD 5 mm Multinu
PULPROG zg30
TD 32768
SOLVENT CDC13
NS 16
DS 2
SWH 4058.442 Hz
FIDRES 0.123854 Hz
AQ 4.0370674 sec
RG 256
DW 123.200 usec
DE 5.00 usec
TE 300.0 K
D1 1.0000000 sec
P1 11.00 usec
DE 5.00 usec
SF01 300.1315818 MHz
NUC1 1H
PL1 -4.00 dB

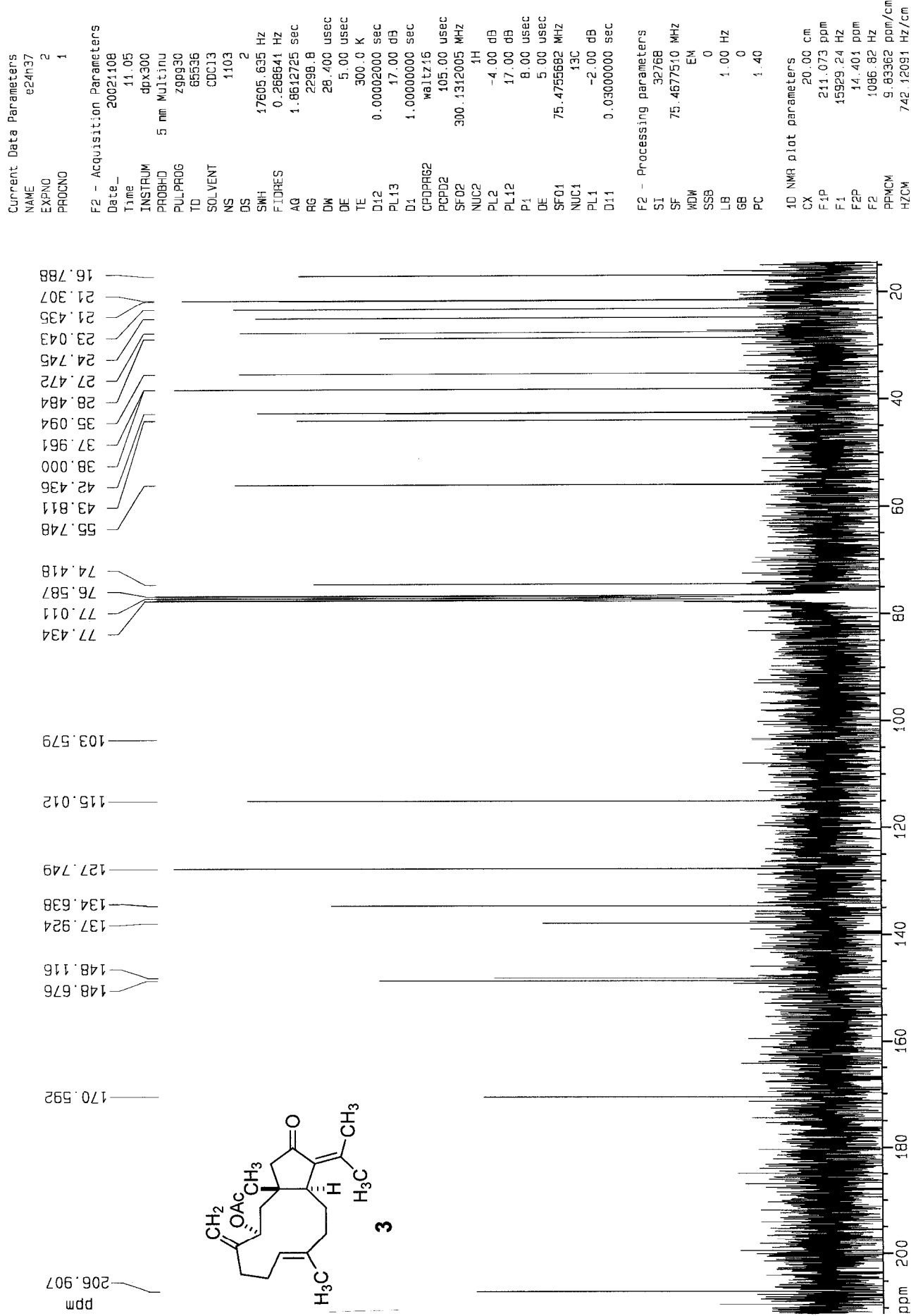
F2 - Processing parameters
SI 16384
SF 300.1300052 MHz
WDW EM
SSB 0
LB 0.30 Hz
GB 0
PC 1.00

1D NMR plot parameters
CX 20.00 cm
F1P 5.492 ppm
F1 1648.32 Hz
F2P 0.747 ppm
F2 224.23 Hz
PPMCM 0.23725 ppm/cm
HZCM 71.20472 Hz/cm

5.41688
5.40957
5.38160
5.37449
5.24859
5.21954
5.18377
5.14140
5.10316
5.05041
5.03354
4.93873
4.79360
4.69263
3.56962
3.53249
3.49856
3.30100
3.26982
3.23028
2.74925
2.66753
2.52888
2.47248
2.39527
2.33467
2.20786
2.17794
2.16714
2.13339
2.06963
2.06317
2.02782
2.00197
1.96777
1.75790
1.68086
1.66311
1.62346
1.59589
1.35806
1.31687
1.30482
1.27677
1.26943
1.22993
1.03553
1.02964



rpar: C13CPD



rpar: C13CPD

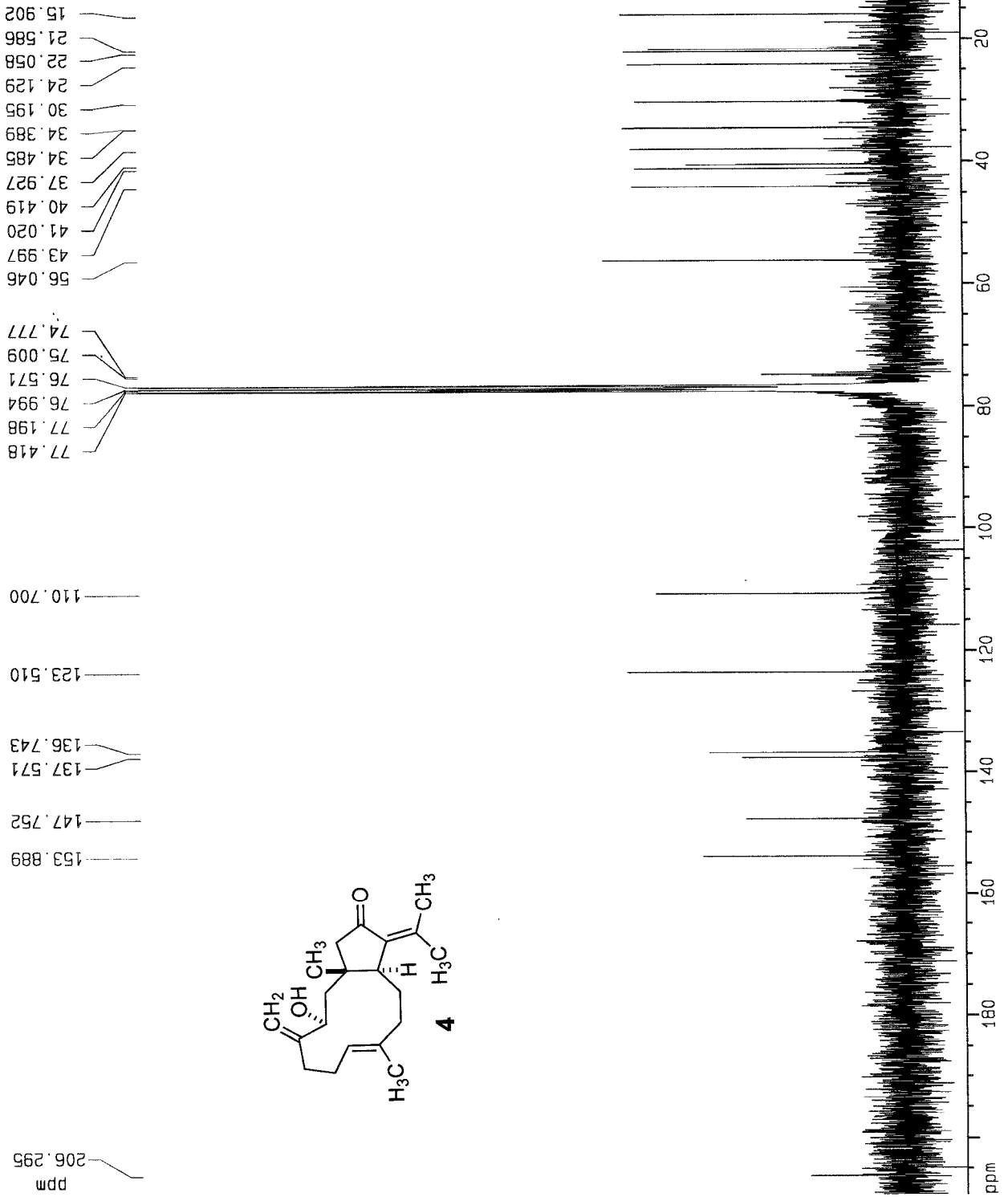
Current Data Parameters
NAME e41b3425
EXPNO 2
PROCNO 1

F2 - Acquisition Parameters

Date_ 20030308
Time 13.56
INSTRUM dpx300
PROBHD 5 mm Multinu
PULPROG zgpg30
TD 65536
SOLVENT CDC13
NS 5013
DS 2
SWH 17605.635 Hz
FIDRES 0.268641 Hz
AQ 1.8612725 sec
RG 2298.8
DM 28.400 usec
DE 5.00 usec
TE 300.0 K
D12 0.00002000 sec
PL13 17.00 dB
D1 1.00000000 sec
PCPDPRG2 waltz16
PCPD2 105.00 usec
SF02 300.1312005 MHz
NUC2 1H
PL2 -4.00 dB
PL12 17.00 dB
P1 8.00 usec
DE 5.00 usec
SF01 75.4755682 MHz
NUC1 13C
PL1 -2.00 dB
D11 0.03000000 sec

F2 - Processing parameters
SI 32768
SF 75.4677510 MHz
WDW EM
SSB 0
LB 1.00 Hz
GB 0
PC 1.40

1D NMR plot parameters
CX 20.00 cm
F1P 209.239 ppm
F1 15790.79 Hz
F2P 13.143 ppm
F2 99.86 Hz
PPMCM 9.80481 ppm/cm
HZCM 739.94690 Hz/cm



Current Data Parameters
NAME
EXPNO
PROCNO

5
1

F2 - Acquisition Parameters

Date 20030310
Time 19.20
INSTRUM oxa300
PROBHD 5 mm Multinu
PULPROG zgpg30
TD 1024
SOLVENT CDCl3
NS 8
DS 16
SWH 4058.442 Hz
FIDRES 3.963322 Hz
AQ 0.1822066 sec
RG 8192
DM 122.200 usec
DE 4.50 usec
TE 300.0 K
D1 1.5000000 sec
D2 11.00 usec
D3 0.0034500 sec
PL2 -3.00 dB
PA 22.00 usec
SFO2 75.475562 MHz
NUC2 13C
D7 0.4000001 sec
P3 9.00 usec
D0 0.0000300 sec
PL12 19.00 dB
DE 4.50 usec
SFO1 300.1315818 MHz
NUC1 1H
PL1 -4.00 dB
CHOPPC2 gbrp
PCPD2 100.00 usec
INQ 0.00001420 sec

F1 - Acquisition Parameters

NU0 4
TD 256
SFO1 75.47557 MHz
FIDRES 66.772102 Hz
SM 233.263 ppm

F2 - Processing parameters

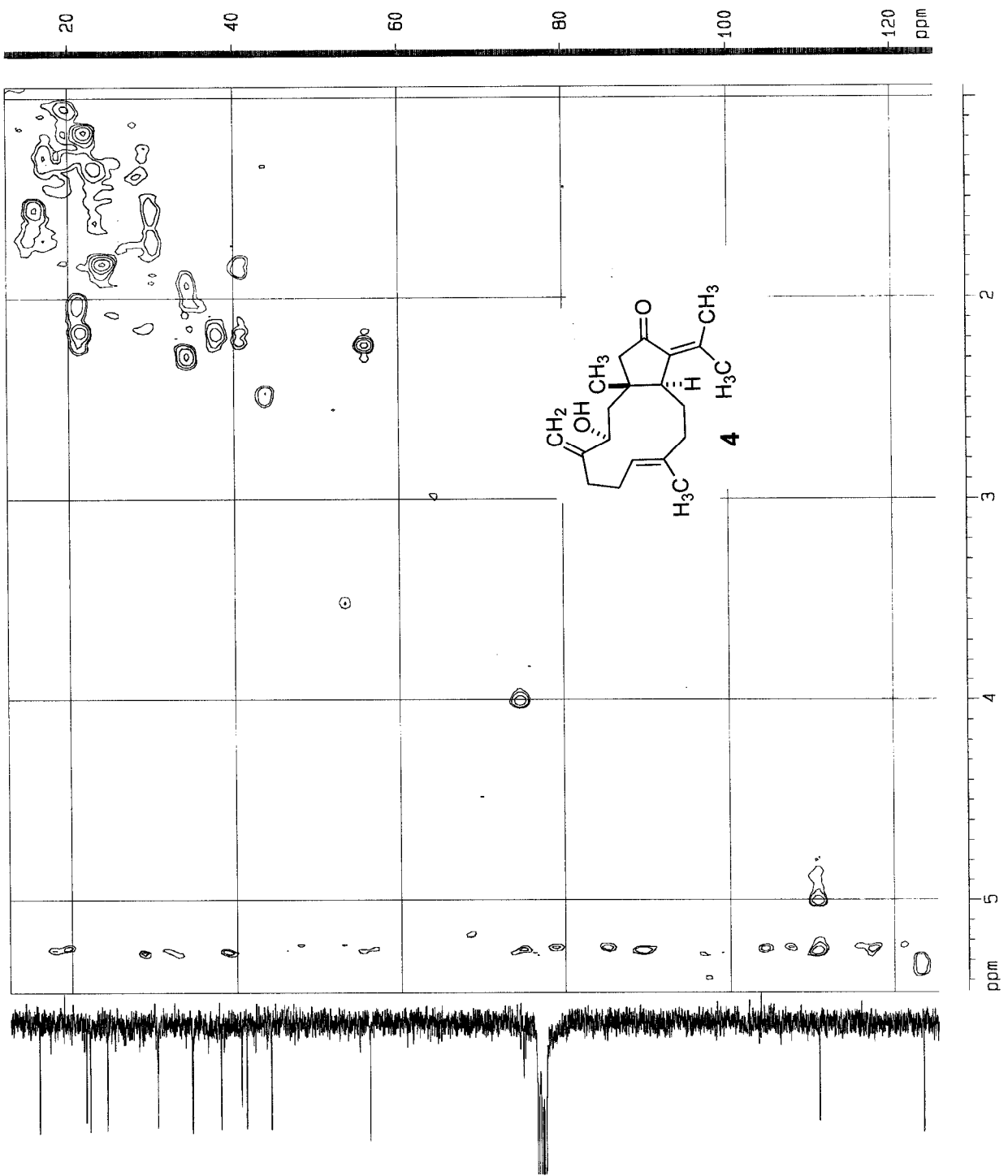
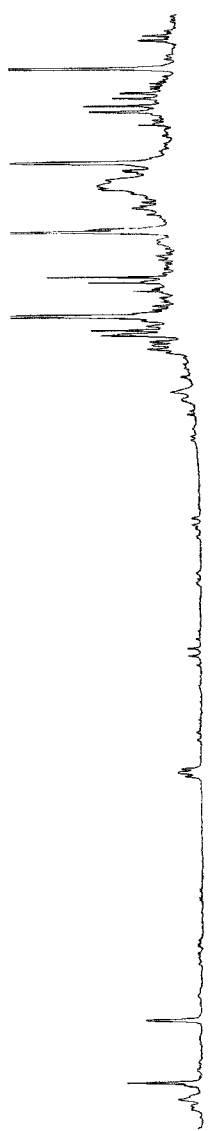
SI 1024
SF 300.1300062 MHz
WDW 0SINE
SSB 2
LB 0.00 Hz
GB 0
PC 1.40

F1 - Processing parameters

SI 512
MC2 TPP1
SF 75.467526 MHz
WDW SINE
SSB 2
LB 0.00 Hz
GB 0

2D NMR plot parameters

CX2 15.00 cm
CX1 15.00 cm
F2P10 5.461 ppm
F2C 1638.97 Hz
F2P41 0.945 ppm
F2H1 283.52 Hz
F1P10 129.433 ppm
F1C 9466.13 Hz
F1P41 7434 ppm
F1H1 330.38 Hz
GPRKN 0.106 ppm/cp
ZBZCA 50.2623 Hz/cm
F1PKN 63.323 ppm/cm
ZBZCA 50.2623 Hz/cm
F1ZCA



ppm

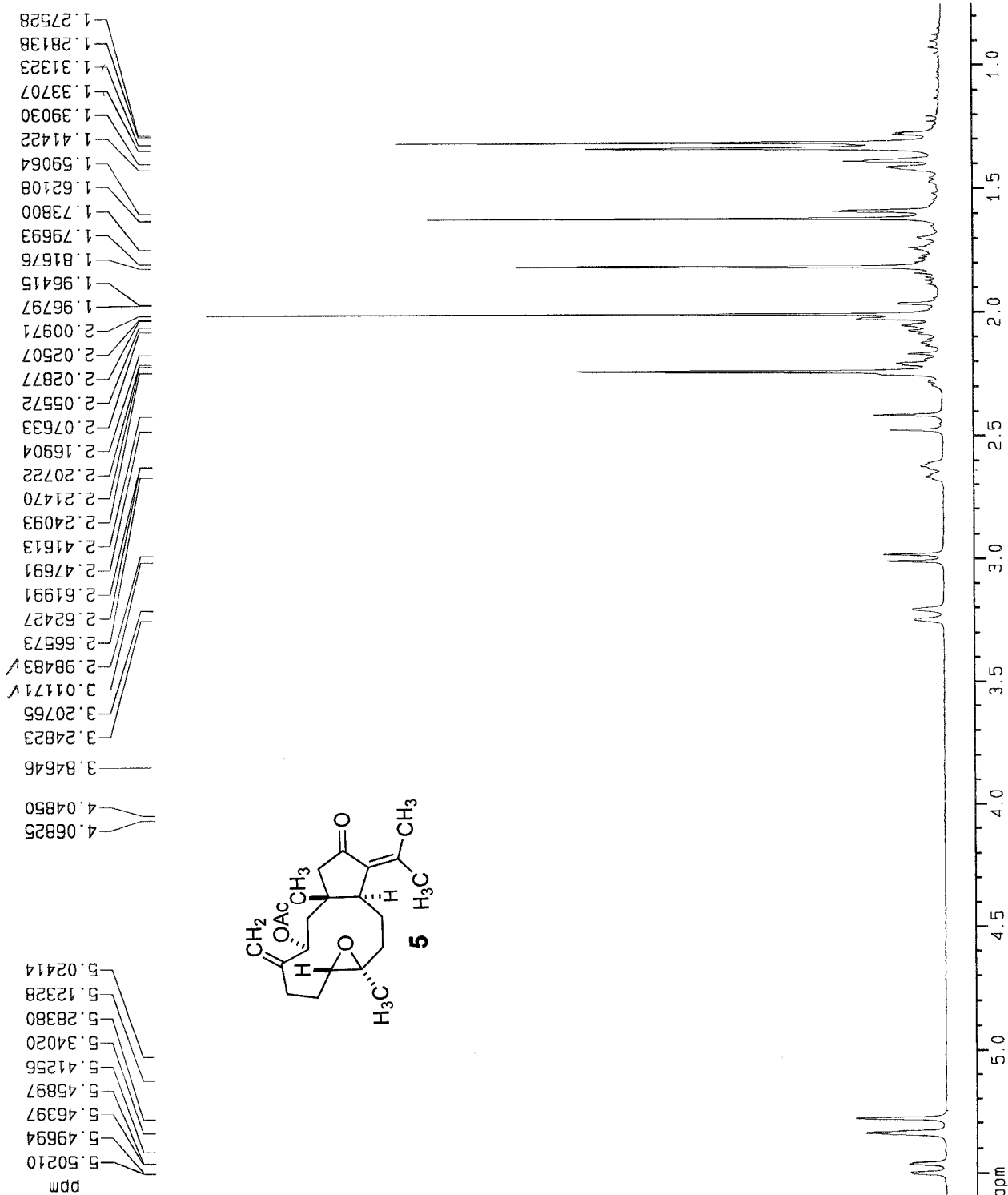
ppm

Current Data Parameters
 NAME e41b3331
 EXPNO 1
 PROCNO 1

F2 - Acquisition Parameters
 Date_ 20030224
 Time 20.05
 INSTRUM dpx300
 PROBHD 5 mm Multinu
 PULPROG zg30
 TD 32768
 SOLVENT CDCl3
 NS 16
 DS 2
 SWH 4058.442 Hz
 FIDRES 0.123854 Hz
 AQ 4.0370674 sec
 RG 574.7
 DM 123.200 usec
 DE 5.00 usec
 TE 300.0 K
 D1 1.00000000 sec
 P1 11.00 usec
 DE 5.00 usec
 SF01 300.131518 MHz
 NUC1 1H
 PL1 -4.00 dB

F2 - Processing parameters
 SI 16384
 SF 300.1300062 MHz
 WDW EM
 SSB 0
 LB 0.30 Hz
 GB 0
 PC 1.00

1D NMR plot parameters
 CX 20.00 cm
 F1P 5.586 ppm
 F1 1680.17 Hz
 F2P 0.751 ppm
 F2 225.28 Hz
 PPMCM 0.24236 ppm/cm
 HZCM 72.74456 Hz/cm



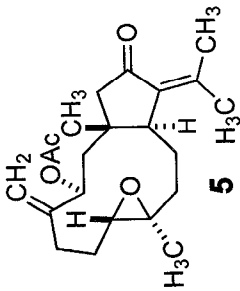
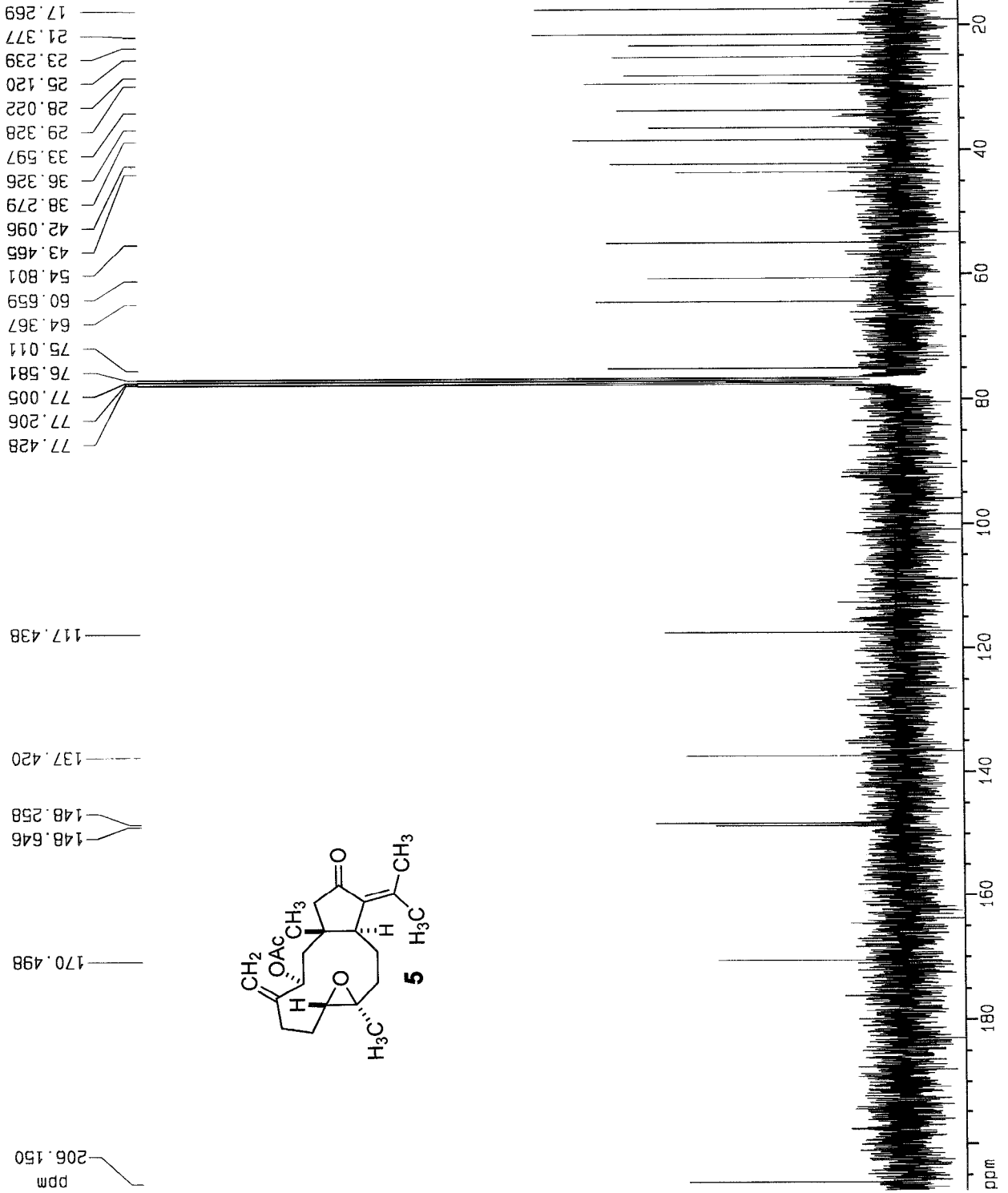
ppar: C13CPD

Current Data Parameters
 NAME e41b3332
 EXPNO 2
 PROCNO 1

F2 - Acquisition Parameters
 Date_ 20030224
 Time 20.36
 INSTRUM dpx300
 PROBHD 5 mm Multinu
 PULPROG zgpg30
 TD 65536
 SOLVENT CDCl3
 NS 645
 DS 2
 SWH 17605.635 Hz
 FIDRES 0.268641 Hz
 AQ 1.8612725 sec
 RG 2048
 DM 28.400 usec
 DE 5.00 usec
 TE 300.0 K
 D12 0.00002000 sec
 PL13 17.00 dB
 D1 1.00000000 sec
 waltz16
 CPDPRG2
 PCPD2 105.00 usec
 SF02 300.1312005 MHz
 NUC2 1H
 PL2 -4.00 dB
 PL12 17.00 dB
 P1 8.00 usec
 DE 5.00 usec
 SF01 75.4755682 MHz
 NUC1 13C
 PL1 -2.00 dB
 D11 0.03000000 sec

F2 - Processing parameters
 SI 32768
 SF 75.4677510 MHz
 WDW EM
 SSB 0
 LB 1.00 Hz
 GB 0
 PC 1.40

1D NMR plot parameters
 CX 20.00 cm
 F1P 207.418 ppm
 F1 15653.38 Hz
 F2P 15.284 ppm
 F2 1153.41 Hz
 PPMCM 9.60673 ppm/cm
 HZCM 724.99829 Hz/cm

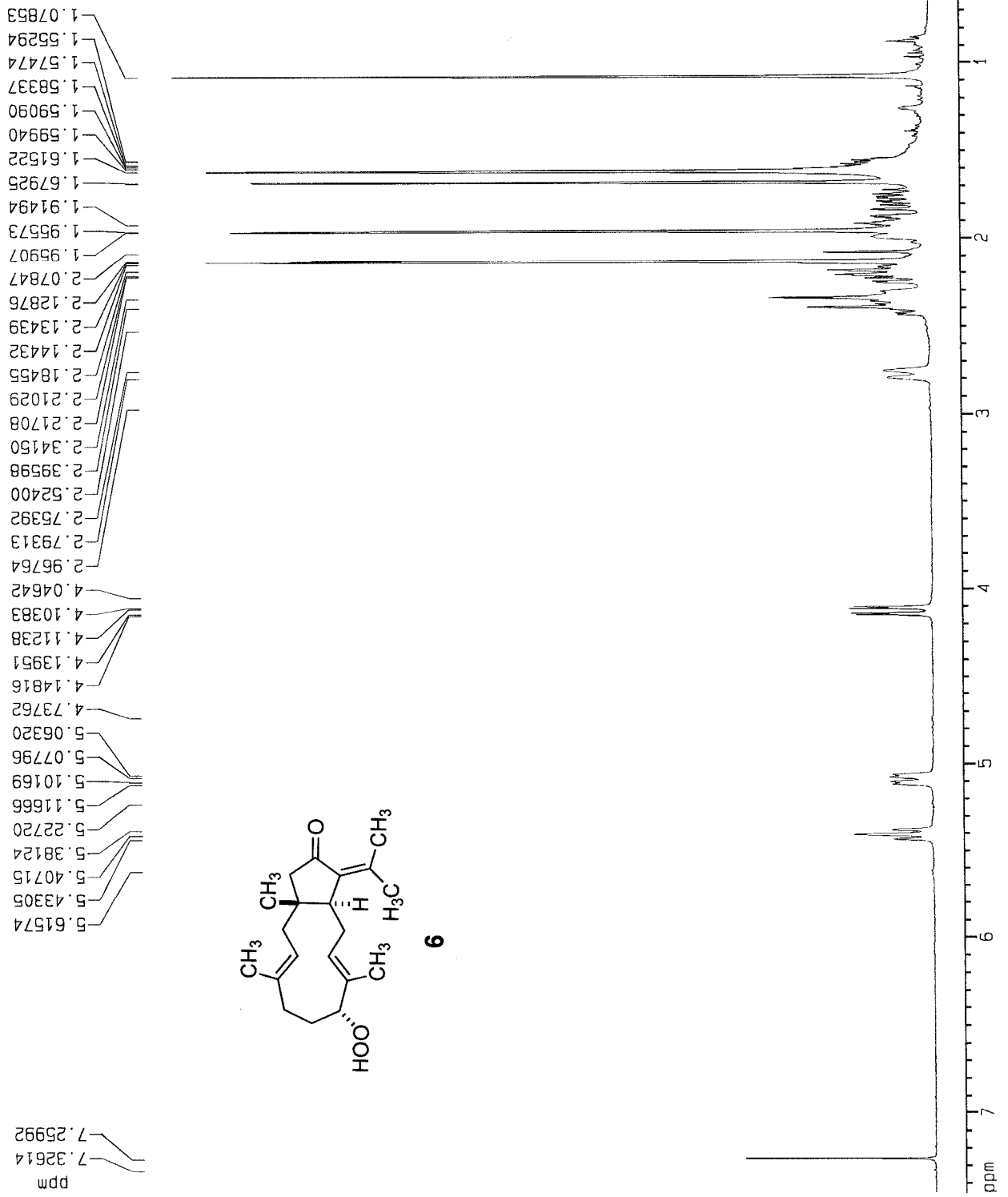


Current Data Parameters
 NAME e27p2hplc10
 EXPNO 1
 PROCNO 1

F2 - Acquisition Parameters
 Date_ 20021016
 Time 16.29
 INSTRUM gdx300
 PROBHD 5 mm Multinu
 PULPROG zg30
 TD 32768
 SOLVENT CDCl3
 NS 16
 DS 2
 SWH 4058.442 Hz
 FIDRES 0.123854 Hz
 AQ 4.0370674 sec
 RG 362
 DW 123.200 usec
 DE 5.00 usec
 TE 300.0 K
 D1 1.00000000 sec
 P1 11.00 usec
 DE 5.00 usec
 SF01 300.1315818 MHz
 NUC1 1H
 PL1 -4.00 dB

F2 - Processing parameters
 SI 16384
 SF 300.1300062 MHz
 WDW EM
 SSB 0
 LB 0.30 Hz
 GB 0
 PC 1.00

1D NMR plot parameters
 CX 20.00 cm
 F1P 7.454 ppm
 F1 2237.23 Hz
 F2P 0.644 ppm
 F2 193.30 Hz
 PPMCM 0.34051 ppm/cm
 HZCM 102.19626 Hz/cm



rpar: C13CPD

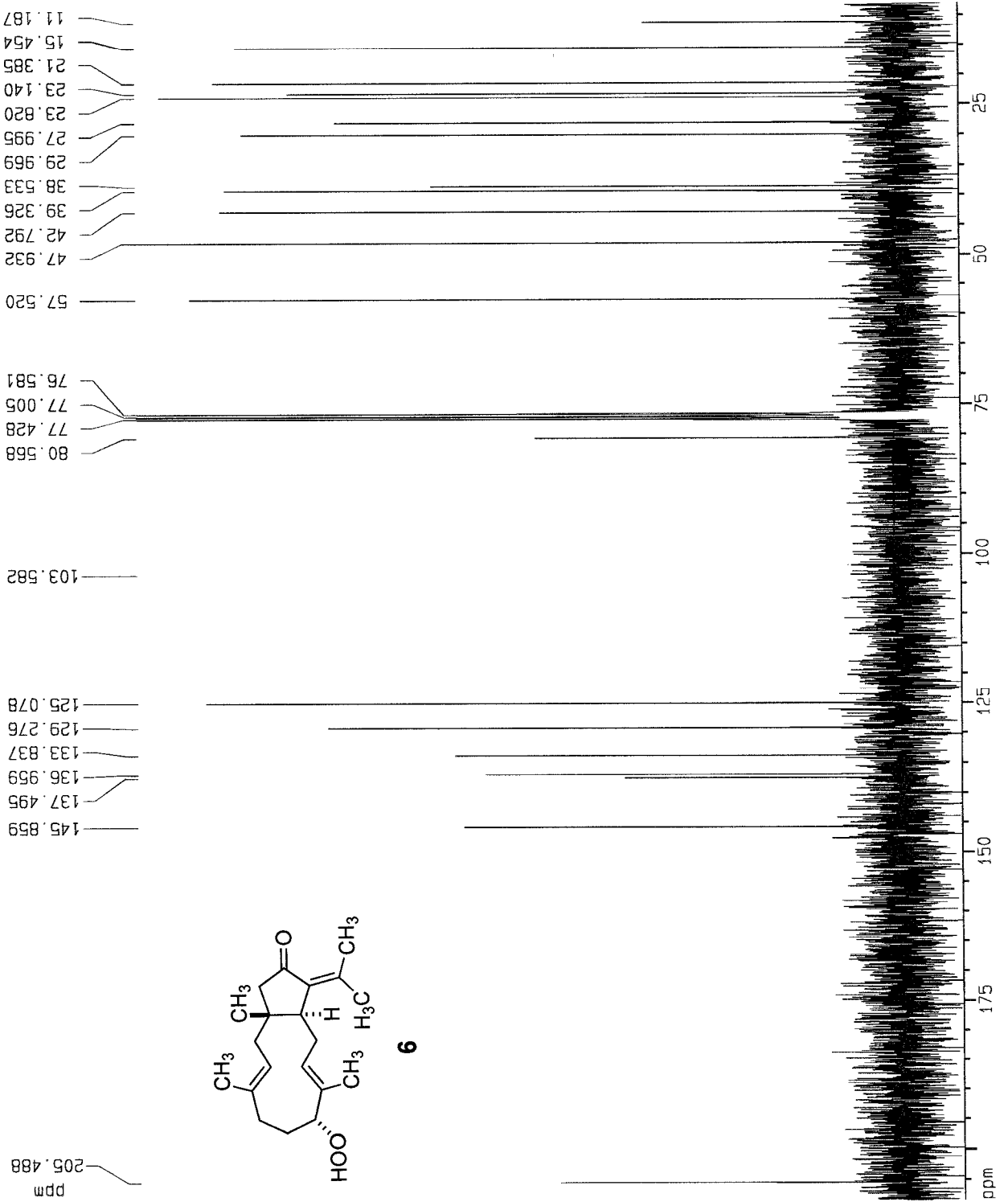
Current Data Parameters
NAME e27o2hpic10
EXPNO 2
PROCNO 1

F2 - Acquisition Parameters

Date_ 20021016
Time 17.16
INSTRUM dpx300
PROBHD 5 mm Multinu
PULPROG zgpg30
TD 65536
SOLVENT CDC13
NS 949
DS 2
SWH 17605.635 Hz
FIDRES 0.268641 Hz
AQ 1.8612725 sec
RG 2296.8
DW 28.400 usec
DE 5.00 usec
TE 300.0 K
D12 0.00002000 sec
PL13 17.00 dB
D1 1.00000000 sec
CPDPRG2 waltz16
PCPD2 105.00 usec
SF02 300.1312005 MHz
NUC2 ¹H
PL2 -4.00 dB
PL12 17.00 dB
P1 8.00 usec
DE 5.00 usec
SF01 75.4755682 MHz
NUC1 ¹³C
PL1 -2.00 dB
D11 0.03000000 sec

F2 - Processing parameters

SI 32768
SF 75.4677510 MHz
WDW EM
SSB 0
LB 1.00 Hz
GB 0
PC 1 40
1D NMR plot parameters
CX 20.00 cm
F1P 208.394 ppm
F1 15727.00 Hz
F2P 8.071 ppm
F2 609.12 Hz
PPMCM 10.04612 ppm/cm
HZCM 755.89398 Hz/cm

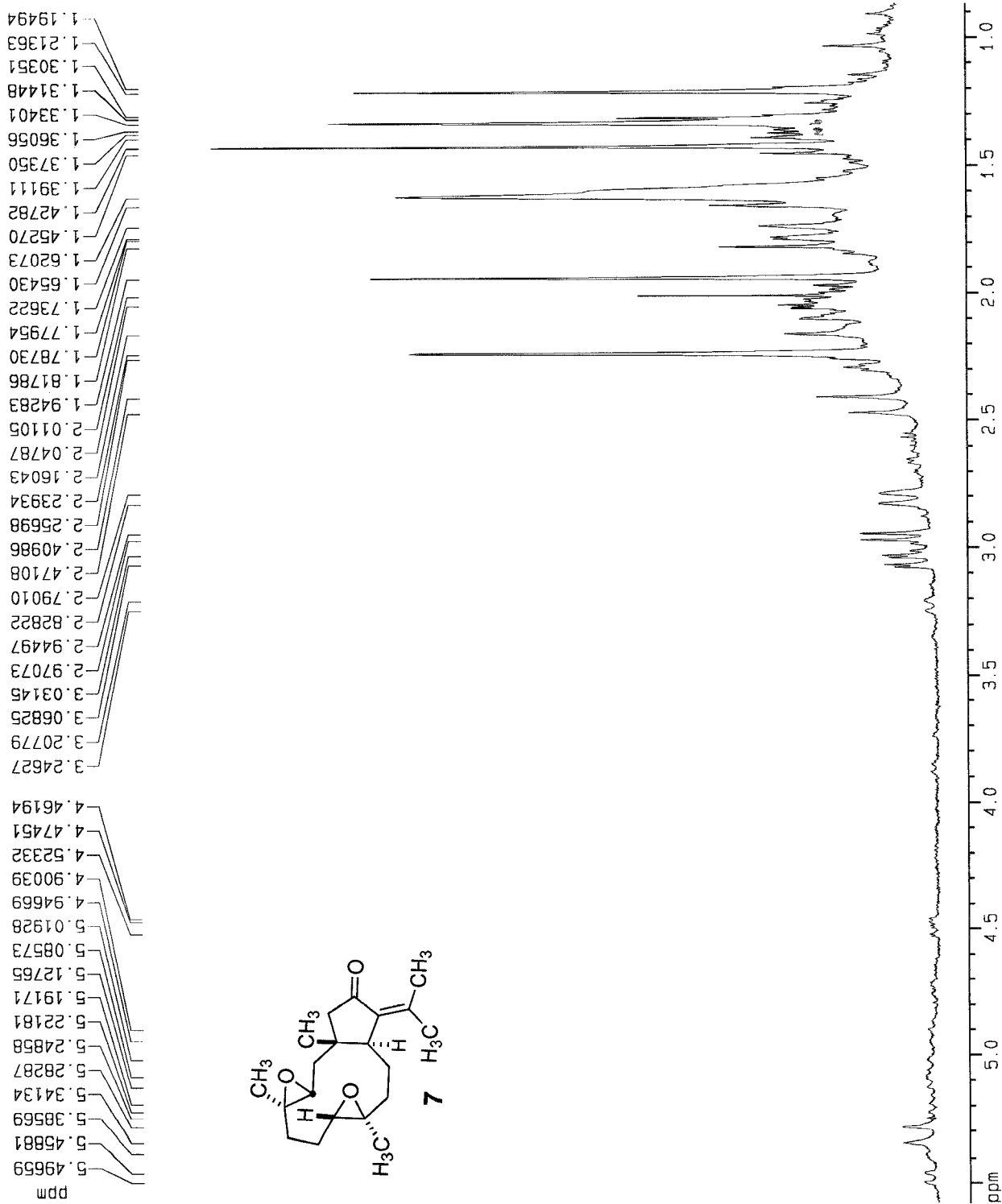


Current Data Parameters
 NAME e41b335
 EXPNO 1
 PROCNO 1

F2 - Acquisition Parameters
 Date_ 20030220
 Time 20.51
 INSTRUM dpx300
 PROBHD 5 mm Multinu
 PULPROG zg30
 TD 32768
 SOLVENT CDCl3
 NS 16
 DS 2
 SWH 4058.442 Hz
 FIDRES 0.123854 Hz
 AQ 4.0370674 sec
 RG 1149.4
 DW 123.200 usec
 DE 5.00 usec
 TE 300.0 K
 D1 1.00000000 sec
 P1 11.00 usec
 DE 5.00 usec
 SF01 300.1315818 MHz
 NUC1 1H
 PL1 -4.00 dB

F2 - Processing parameters
 SI 16384
 SF 300.1300052 MHz
 WDW EM
 SSB 0
 LB 0.30 Hz
 GB 0
 PC 1.00

1D NMR plot parameters
 CX 20.00 cm
 F1P 5.578 ppm
 F1 1674.22 Hz
 F2P 0.867 ppm
 F2 260.33 Hz
 PPMCM 0.23555 ppm/cm
 HZCM 70.69450 Hz/cm



Current Data Parameters
 NAME e41b335
 EXPNO 2
 PROCNO 1

F2 - Acquisition Parameters
 Date_ 20030222
 Time 10.16
 INSTRUM spect
 PROBHD 5 mm Multinu
 PULPROG zgpg30
 TD 65536
 SOLVENT CDCl3
 NS 8748
 DS 2

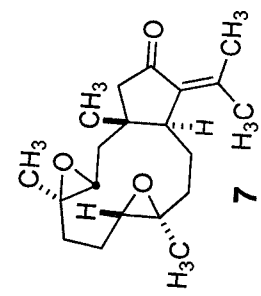
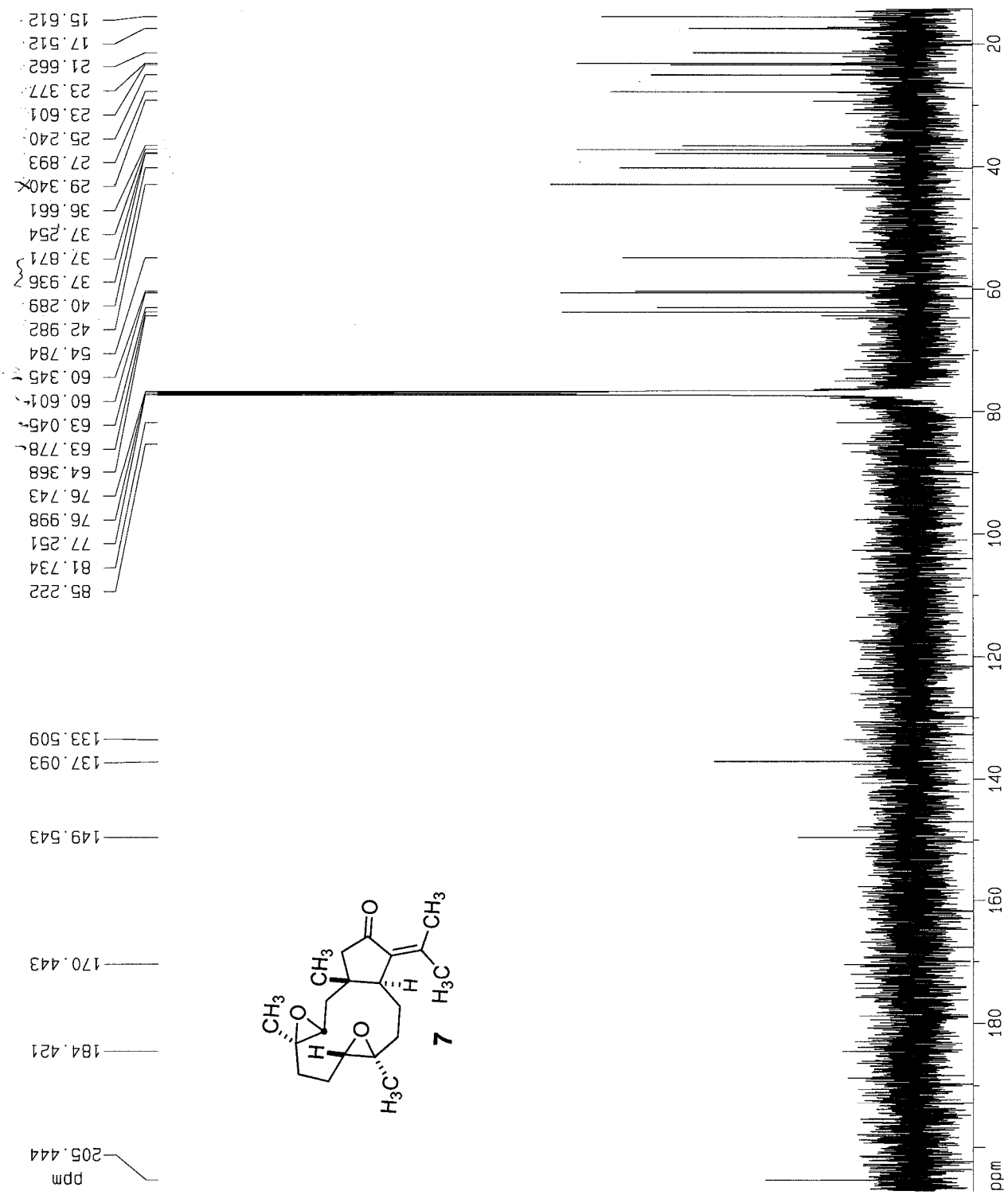
SWH 30303.031 Hz
 FIDRES 0.462388 Hz
 AQ 1.0813940 sec
 RG 4096
 DW 16.500 usec
 DE 6.00 usec
 TE 300.0 K

Df2 0.00002000 sec
 PL13 22.00 dB
 D1 1.00000000 sec
 CPDPRG2 waitz16
 PCPD2 94.00 usec
 SF02 500.1320005 MHz
 NUC2 1H

PL2 0.00 dB
 PL12 21.00 dB
 P1 9.35 usec
 SF01 125.7709955 MHz
 NUC1 13C
 PL1 2.00 dB
 D11 0.03000000 sec

F2 - Processing parameters
 SI 32768
 SF 125.7577906 MHz
 WDW EM
 SSB 0
 LB 1.00 Hz
 GB 0
 PC 1.00

1D NMR plot parameters
 CX 20.00 cm
 F1P 207.135 ppm
 F1 26048.89 Hz
 F2P 14.242 ppm
 F2 1791.00 Hz
 PPMCM 9.64469 ppm/cm
 HZCM 1212.89465 Hz/cm

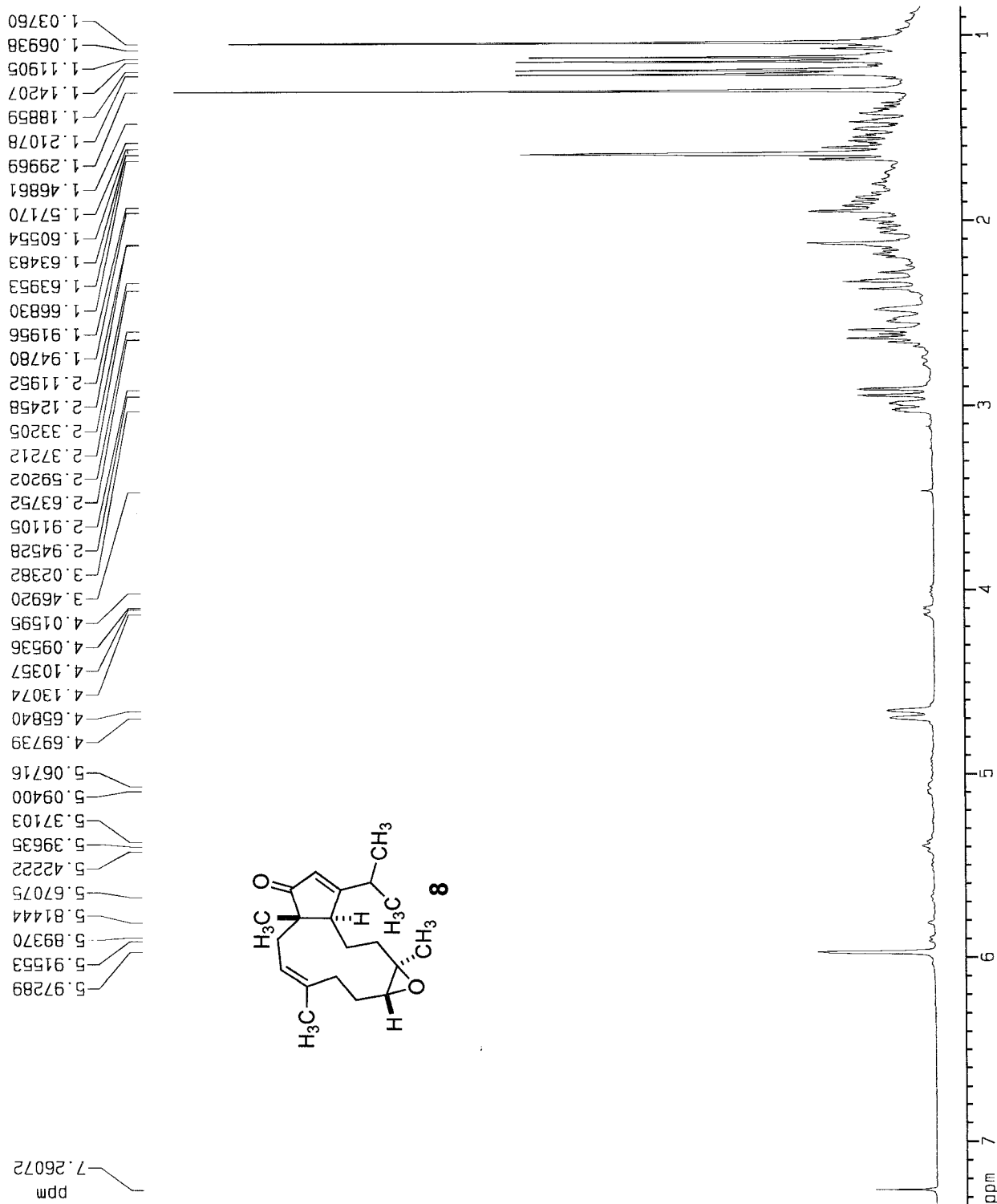


Current Data Parameters
 NAME e29623rh5
 EXPNO 1
 PROCNO 1

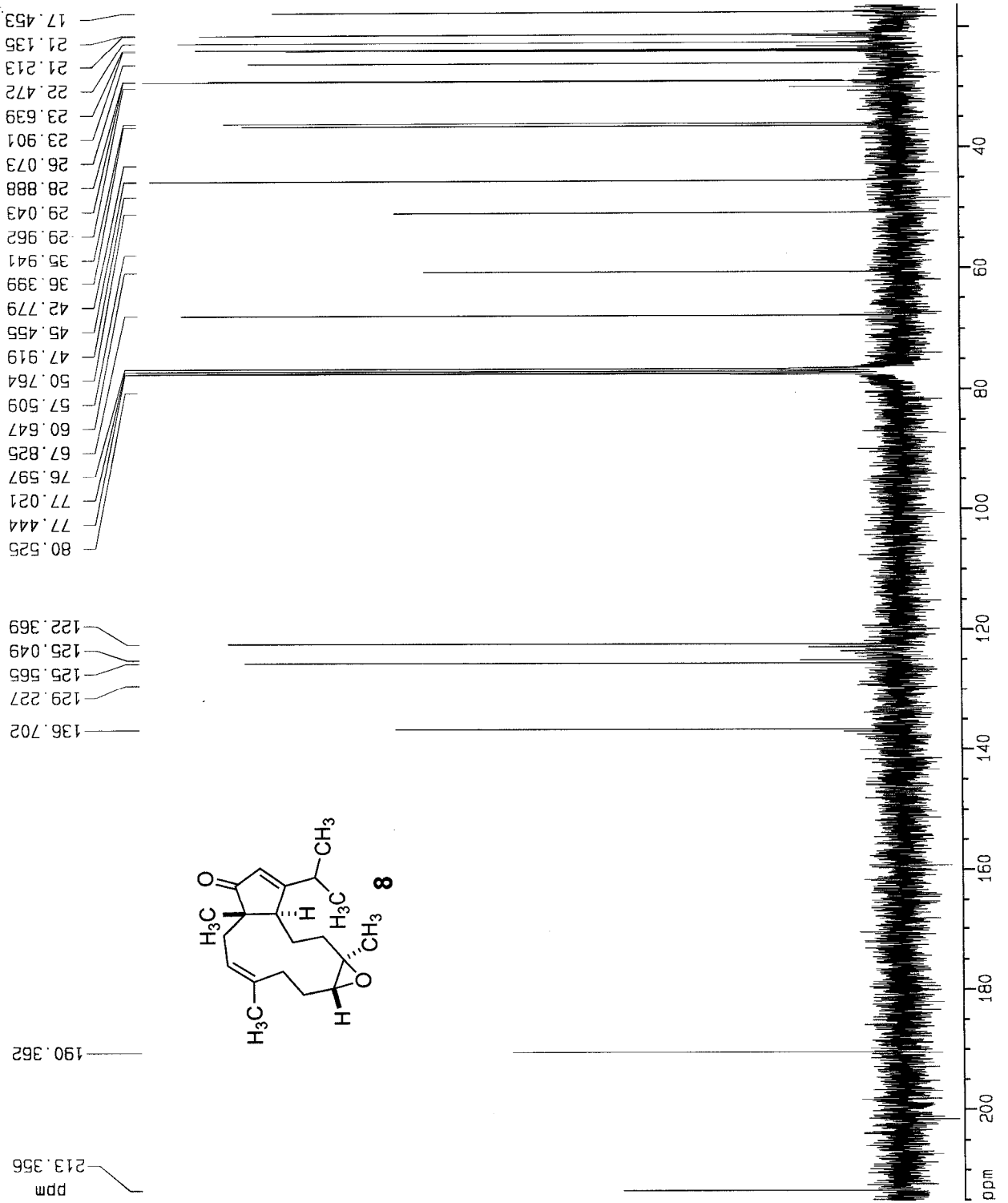
F2 - Acquisition Parameters
 Date_ 20021120
 Time 16.17
 INSTRUM dpx300
 PROBHD 5 mm Multinu
 PULPROG zg30
 TD 32768
 SOLVENT CDCl3
 NS 16
 DS 2
 SWH 4058.442 Hz
 FIDRES 0.123854 Hz
 AQ 4.0370674 sec
 RG 181
 DW 123.200 usec
 DE 5.00 usec
 TE 300.0 K
 D1 1.0000000 sec
 P1 11.00 usec
 DE 5.00 usec
 SF01 300.1315818 MHz
 NUC1 1H
 PL1 -4.00 dB

F2 - Processing parameters
 SI 16384
 SF 300.1300062 MHz
 WDW EM
 SSB 0
 LB 0.30 Hz
 GB 0
 PC 1.00

1D NMR plot parameters
 CX 20.00 cm
 F1P 7.335 ppm
 F1 2201.36 Hz
 F2P 0.842 ppm
 F2 252.74 Hz
 PPMCM 0.32483 ppm/cm
 HZCM 97.43104 Hz/cm



rpar: C13CPD



Current Data Parameters
NAME e25623rn5
EXPNO 2
PROCNO 1

F2 - Acquisition Parameters

Date_ 20021120
Time 17 01
INSTRUM dpx300
PROBHD 5 mm Multinu
PULPROG zgpg30
TD 65536
SOLVENT CDCl3
NS 673
DS 2
SWH 17605.635 Hz
FIDRES 0.268641 Hz
AQ 1.8612725 sec
RG 2298.8
DM 28.400 usec
DE 5.00 usec
TE 300.0 K
D12 0.0002000 sec
PL13 17.00 dB
D1 1.00000000 sec
CPDPRG2 waltz16
PCPD2 105.00 usec
SF02 300.1312005 MHz
NUC2 ¹H
PL2 -4.00 dB
PL12 17.00 dB
P1 8.00 usec
DE 5.00 usec
SF01 75.4756682 MHz
NUC1 ¹³C
PL1 -2.00 dB
D11 0.03000000 sec

F2 - Processing parameters

SI 32768
SF 75.4677510 MHz
WDW EM
SSB 0
LB 1.00 Hz
GB 0
PC 1.40

1D NMR plot parameters

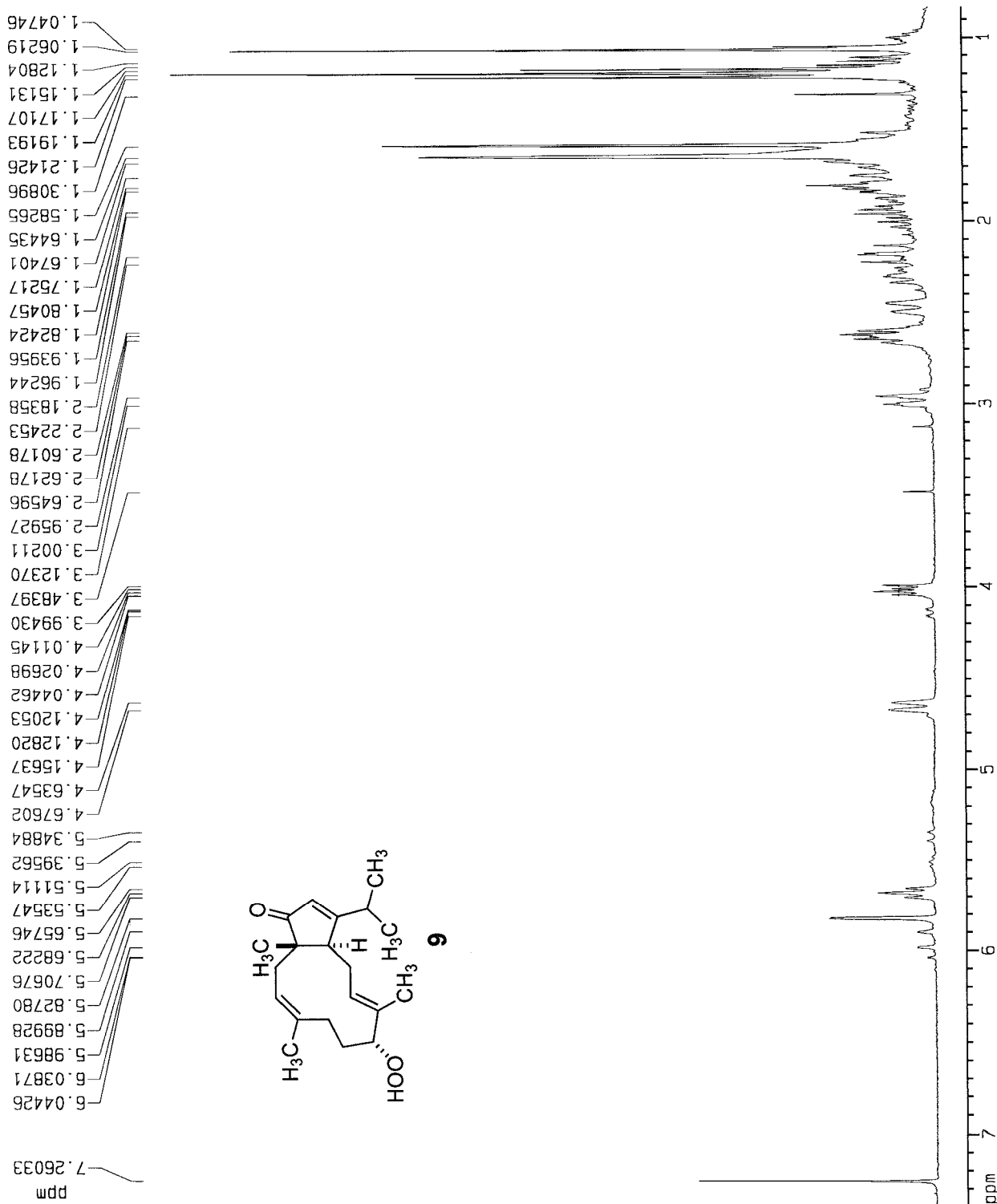
CX 20.00 cm
FIP 215.049 ppm
F1 16229.27 Hz
F2P 16.374 ppm
F2 1235.68 Hz
PRMCM 9.93377 ppm/cm
HZCM 749.67914 Hz/cm

Current Data Parameters
 NAME e296n2rh3
 EXPNO 1
 PROCNO 1

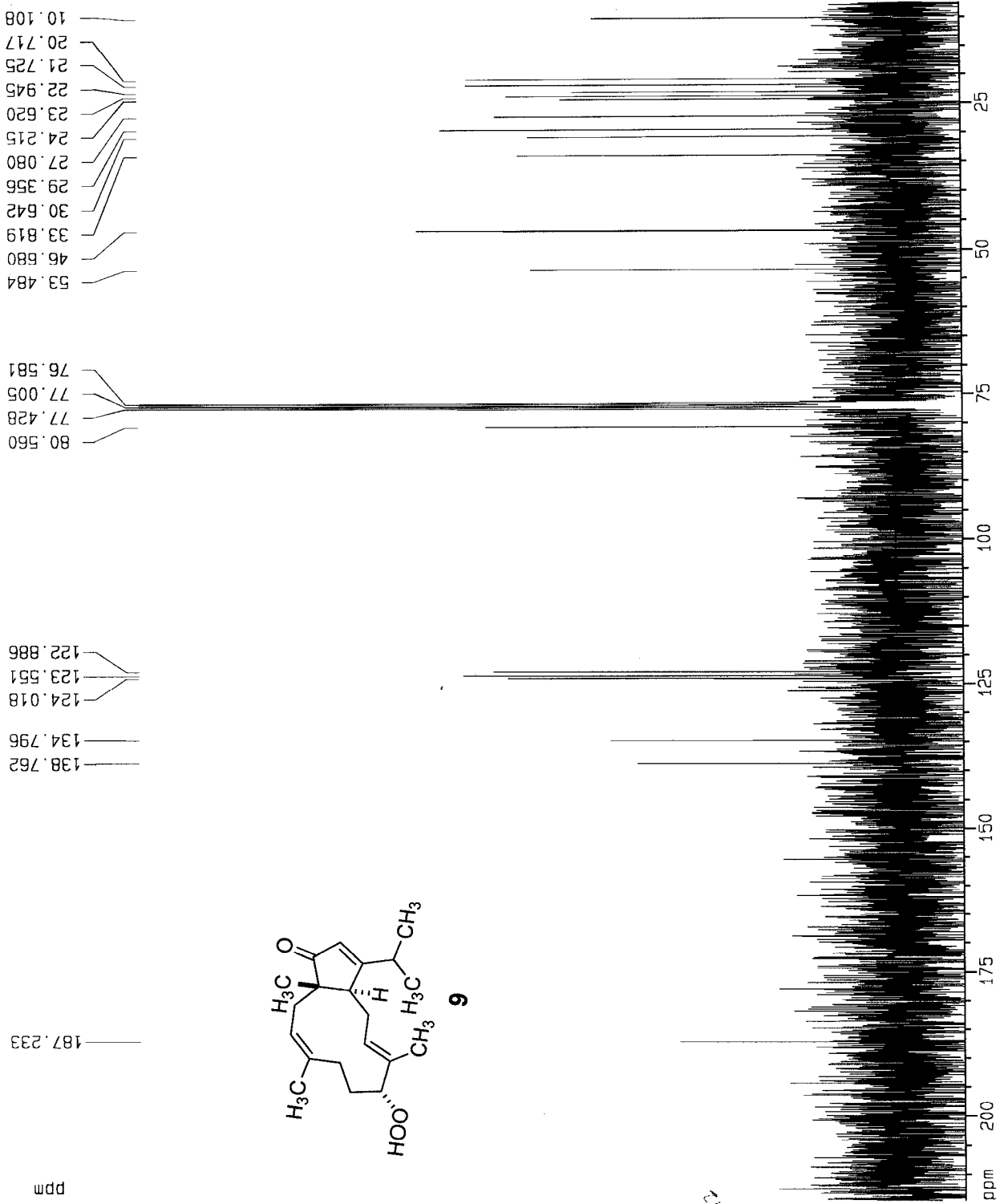
F2 - Acquisition Parameters
 Date_ 20021114
 Time 10.05
 INSTRUM dpx300
 PROBHD 5 mm Multinu
 PULPROG zg30
 TD 32768
 SOLVENT CDC13
 NS 16
 DS 2
 SWH 4058.442 Hz
 FIDRES 0.123854 Hz
 AQ 4.0370674 sec
 RG 574.7
 DW 123.200 usec
 DE 5.00 usec
 TE 300.0 K
 D1 1.0000000 sec
 P1 11.00 usec
 DE 5.00 usec
 SF01 300.1315818 MHz
 NUC1 1H
 PL1 -4.00 dB

F2 - Processing parameters
 SI 16384
 SF 300.1300062 MHz
 WDW EM
 SSB 0
 LB 0.30 Hz
 GB 0
 PC 1.00

1D NMR plot parameters
 CX 20.00 cm
 F1P 7.984 ppm
 F1 2216.21 Hz
 F2P 0.633 ppm
 F2 249.89 Hz
 PPMCM 0.32758 ppm/cm
 HZCM 98.31586 Hz/cm



rpar: C13CPD



Current Data Parameters
 NAME e296h2rh3
 EXPNO 2
 PROCNO 1

F2 - Acquisition Parameters
 Date_ 2002114
 Time 10.13
 INSTRUM dpx300
 PROBHD 5 mm Multinu
 PULPROG zgpg30
 TD 65536
 SOLVENT CDCl3
 NS 538
 DS 2
 SWH 17605.635 Hz
 FIDRES 0.268641 Hz
 AQ 1.8612725 sec
 RG 1149.4
 DW 28.400 usec
 DE 5.00 usec
 TE 300.0 K
 D12 0.00002000 sec
 PL13 17.00 dB
 D1 1.00000000 sec
 waltz16

CPDPRG2
 PCPD2 105.00 usec
 SF02 300.1312005 MHz
 NUC2 1H
 PL2 -4.00 dB
 PL12 17.00 dB
 P1 8.00 usec
 DE 5.00 usec
 SF01 75.4755682 MHz
 NUC1 13C
 PL1 -2.00 dB
 D11 0.03000000 sec

F2 - Processing parameters
 SI 32768
 SF 75.4677510 MHz
 WDW EM
 SSB 0
 LB 1.00 Hz
 GB 0
 PC 1.40

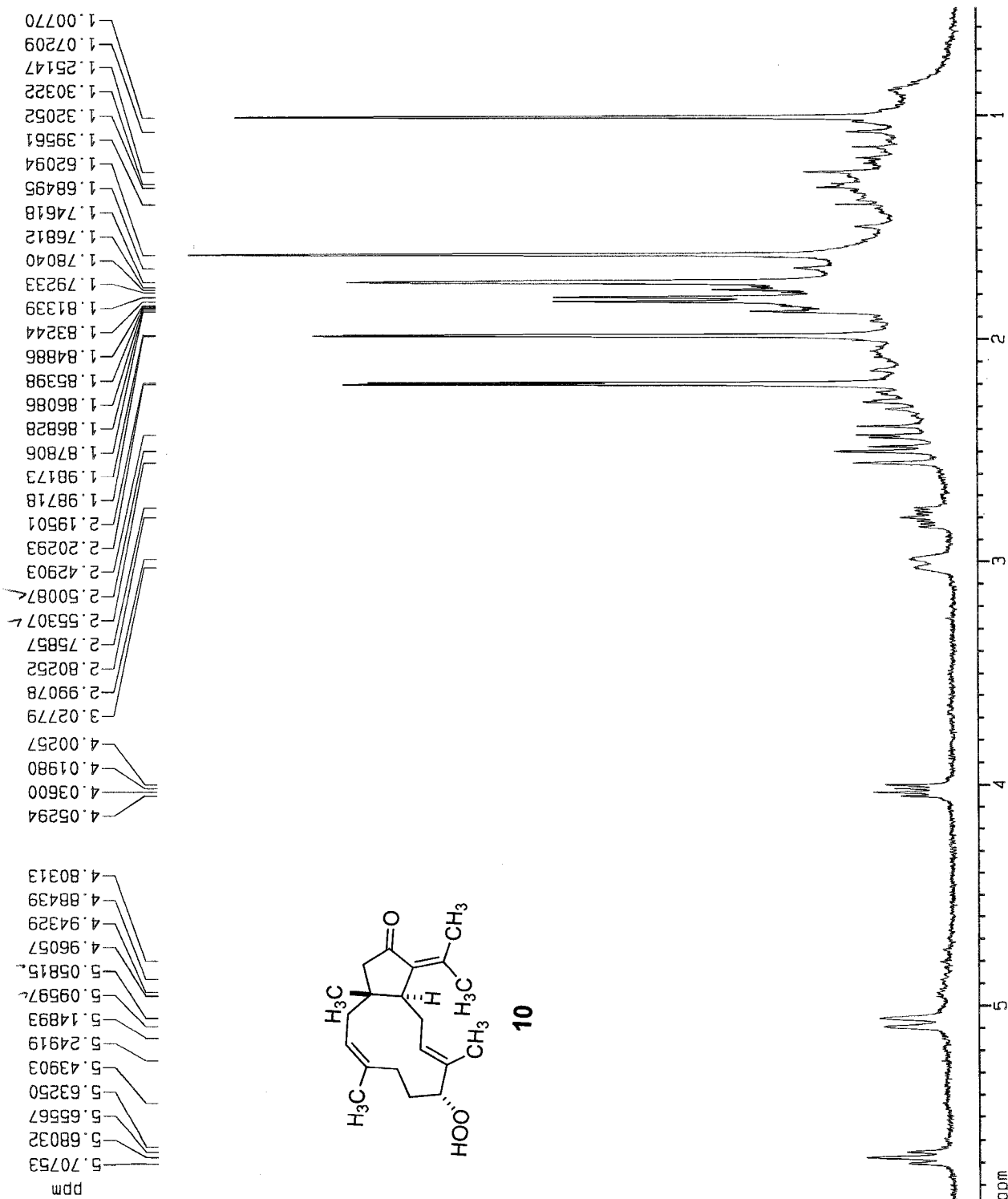
1D NMR plot parameters
 CX 20.00 cm
 F1P 214.335 ppm
 F1 16175.35 Hz
 F2P 7.564 ppm
 F2 570.82 Hz
 PPMCM 10.33854 ppm/cm
 HZCM 750.22668 Hz/cm

Current Data Parameters
 NAME e24h8
 EXPNO 11
 PROCNO 1

F2 - Acquisition Parameters
 Date_ 20021032
 Time 8.15
 INSTRUM dpx300
 PROBHD 5 mm Multinu
 PULPROG zg30
 TD 32768
 SOLVENT CDC13
 NS 16
 DS 2
 SWH 4058.442 Hz
 FIDRES 0.123854 Hz
 AQ 4.0370674 sec
 RG 1149.4
 DW 123.200 usec
 DE 5.00 usec
 TE 300.0 K
 D1 1.0000000 sec
 P1 11.00 usec
 DE 5.00 usec
 SF01 300.1315818 MHz
 NUC1 1H
 PL1 -4.00 dB

F2 - Processing parameters
 SI 16384
 SF 300.1300062 MHz
 WDW EM
 SSB 0
 LB 0.30 Hz
 GB 0
 PC 1.00

1D NMR plot parameters
 CX 20.00 cm
 F1P 5.873 ppm
 F1 1762.65 Hz
 F2P 0.513 ppm
 F2 153.86 Hz
 PPMCM 0.26802 ppm/cm
 HZCM 80.43977 Hz/cm



Current Data Parameters

NAME e24n6
EXPNO 4
PROCNO 1

F2 - Acquisition Parameters

Date_ 20021022
Time 8:21
INSTRUM gpx300
PROBHD 5 mm Multinu
PULPROG cosy45
TD 1024
SOLVENT CDCl3
NS 16
DS 16
SWH 4068.442 Hz
FIDRES 3.963322 Hz
AQ 0.1262066 sec
RG 512
DM 123.200 usec
DE 5.00 usec
TE 300.0 K
D1 1.0000000 sec
P1 11.00 usec
D0 0.0000000 sec
DE 5.00 usec
SFO1 300.1315618 MHz
NUC1 1H
PL1 -4.00 dB
IN0 0.00024640 sec

F1 - Acquisition parameters

NUC0 13C
TD 256
SFO1 300.1316 MHz
FIDRES 15.853278 Hz
SW 13.522 ppm

F2 - Processing parameters

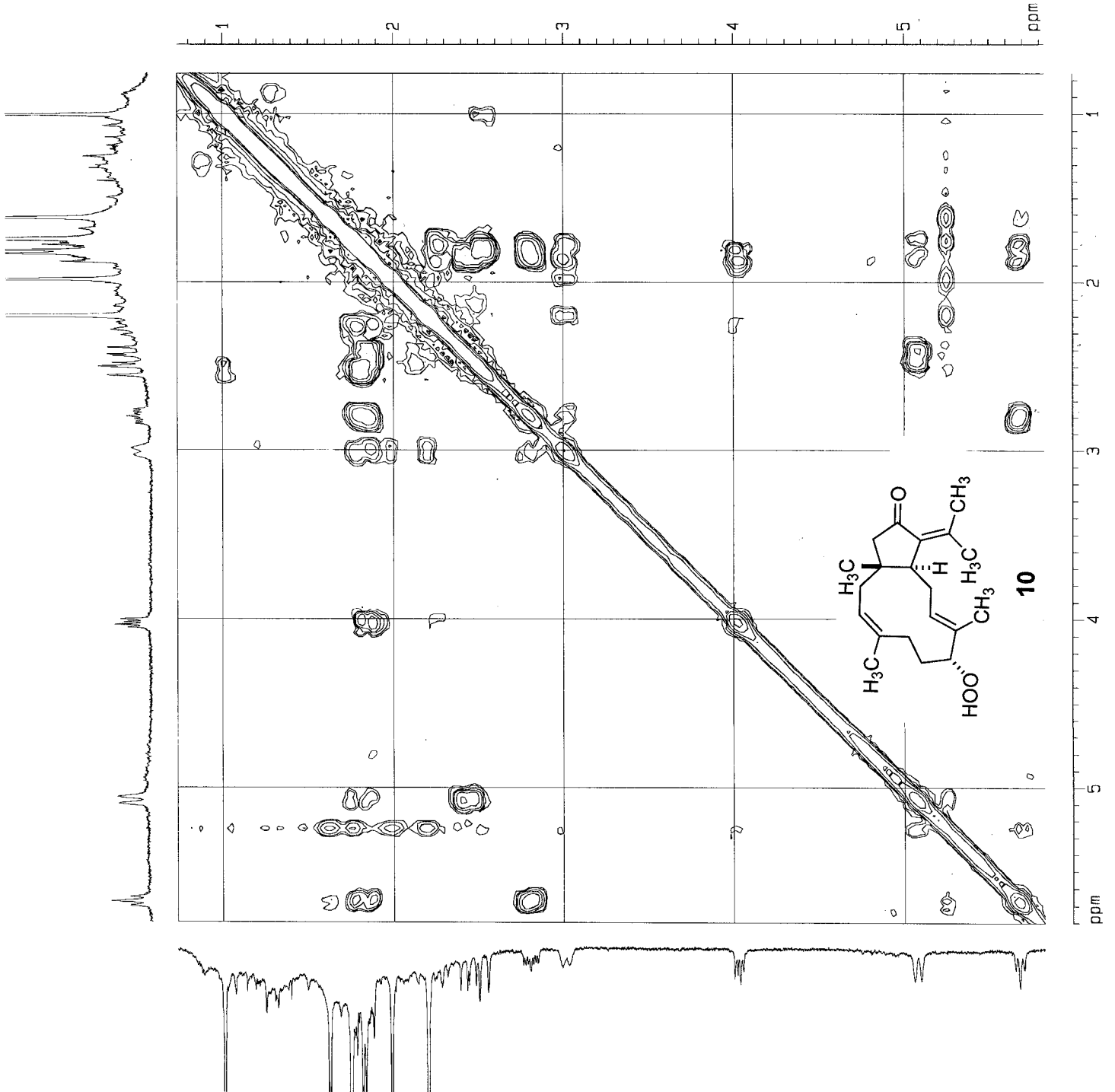
SI 512
SF 300.1300062 MHz
WDW SINE
SSB 0
LB 0.00 Hz
GB 0
PC 1.00

F1 - Processing parameters

SI 512
MC2 OF
SF 300.1300062 MHz
WDW SINE
SSB 0
LB 0.00 Hz
GB 0

2D NMR plot parameters

CX2 15.00 cm
CX1 15.00 cm
F2PLO 5.804 ppm
F2LO 1741.99 Hz
F2PH1 0.760 ppm
F2PH2 228.00 Hz
F1PLO 5.821 ppm
F1LO 1749.99 Hz
F1PH1 0.733 ppm
F1PH2 220.11 Hz
F2PACM 0.33630 ppm/cm
F2HZCM 100.93259 Hz/cm
F1PACM 0.33982 ppm/cm
F1HZCM 104.08043 Hz/cm



Eunicea sp. 2



Inches 1 2 3 4 5 6
ARM SCIENTIFIC CO., INC.
P.O. Box 2385 Hato Rey, P.R. 00919
Road 869 Km 0.9
Ba. Palmas, Cataño 00732
Tel: (809) 788-2440 788-2441
ECON-O-LINE