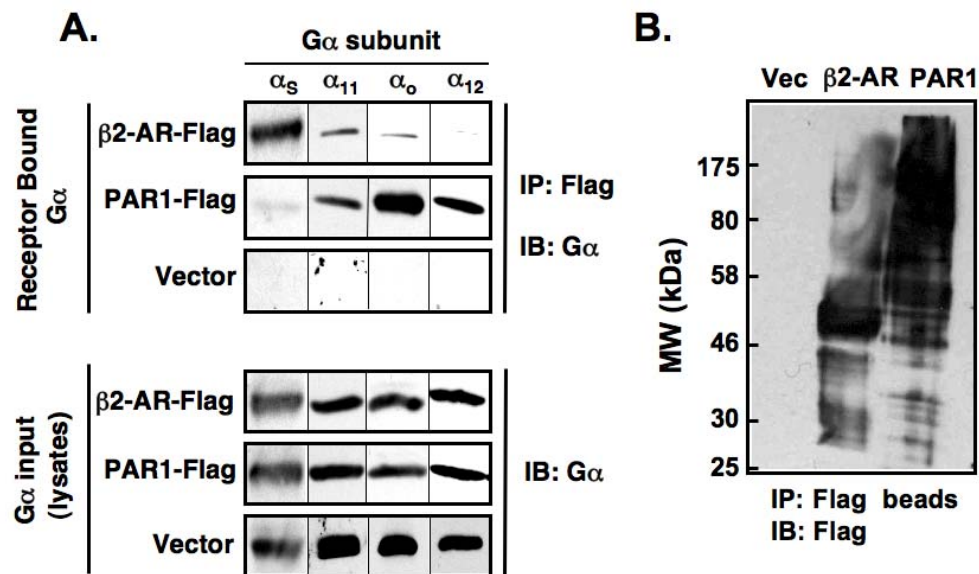


Supplemental Figure 2



Supplemental Figure 2. The β 2-adrenergic receptor (β 2-AR) co-immunoprecipitates with distinct G proteins. Following a 24 h co-transfection of receptor and G protein pairs, cells were lysed, harvested, and sonicated in Tris Buffer. Proteins were extracted from membranes and immunoprecipitated overnight with anti-FLAG affinity gel. Immunoprecipitates were resolved by SDS-PAGE. Proteins were immunoblotted and visualized with ECL.