

Am.w.
(kDa)

67 —

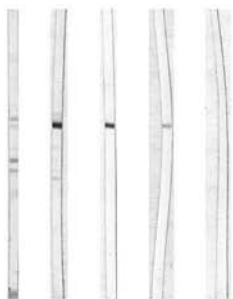
49 —

36 —

29 —

24 —

20 —



LUMA

- 1 Serum
- 2 Pur. Ab. 1:1.000
- 3 Pur. Ab. 1:2.000
- 4 Pur. Ab. 1:10.000
- 5 Control

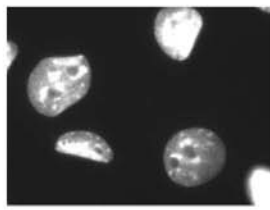
1 2 3 4 5

B

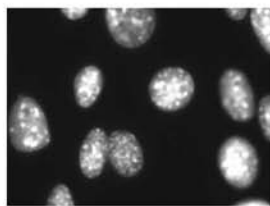
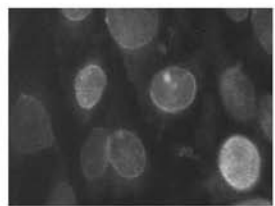
LUMA

DAPI

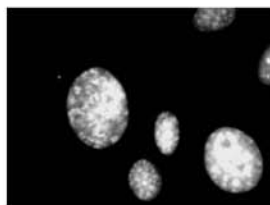
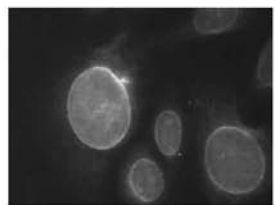
Control



1:1000



1:500



1:100

