

Characterization of Tamulamides A and B,
Polyethers Isolated from the Marine
Dinoflagellate *Karenia brevis*

Laura T. Truxal[†], Andrea J. Bourdelais^{*‡}, Henry Jacocks[‡], William M. Abraham[§] and
Daniel G. Baden[‡]

*Department of Oceanography, University of Washington, P.O. Box 357940, Seattle WA
98195, Center for Marine Science, University of North Carolina at Wilmington, 5600
Marvin K. Moss Lane, Wilmington NC 28409, Department of Research, Mount Sinai
Medical Center, 4300 Alton Rd. Miami Beach, FL 33140*

*Author to whom correspondence should be addressed. Tel: 910-962-2365, Fax:910-
962-2410, Email: bourdelaisa@uncw.edu

[†]Department of Oceanography, University of Washington.

[‡]Center for Marine Science University of North Carolina at Wilmington.

[§]Department of Research, Mount Sinai Medical Center.

List of Supporting Information

		Page
Figure S1	^1H -NMR (CD_2Cl_2 , 500 MHz) of Tamulamide A (1).	3
Figure S2	^{13}C -NMR (CD_2Cl_2 , 500 MHz) of Tamulamide A (1).	4
Figure S3	^{13}C -DEPT-NMR (CD_2Cl_2 , 500 MHz) of Tamulamide A (1).	5
Figure S4	^1H - ^1H -COSY -NMR (CD_2Cl_2 , 500 MHz) of Tamulamide A (1).	6
Figure S5	^1H - ^1H -COSY-NMR (CD_2Cl_2 , 500 MHz) of Tamulamide A (1).	7
	Expansion of regions 4.5-6.0 ppm.	
Figure S6	^1H - ^1H -TOCSY-NMR (CD_2Cl_2 , 500 MHz) of Tamulamide A (1).	8
Figure S7	^1H - ^1H -ROESY-NMR (CD_2Cl_2 , 500 MHz) of Tamulamide A (1).	9
Figure S8	^1H - ^{13}C -HSQC-NMR (CD_2Cl_2 , 500 MHz) of Tamulamide A (1).	10
FigureS9	^1H - ^{13}C -HMBC-NMR (CD_2Cl_2 , 500 MHz) of Tamulamide A (1).	11
Figure S10	^1H -NMR (CD_2Cl_2 , 500 MHz) of Tamulamide B (2).	12
Figure S11	^{13}C -NMR (CD_2Cl_2 , 500 MHz) of Tamulamide B (2).	13
Figure S12	^{13}C -DEPT-NMR (CD_2Cl_2 , 500 MHz) of Tamulamide B (2).	14
Figure S13	^1H - ^1H -COSY -NMR (CD_2Cl_2 , 500 MHz) of Tamulamide B (2).	15
Figure S14	^1H - ^1H -COSY-NMR (CD_2Cl_2 , 500 MHz) of Tamulamide B (2).	16
	Expansion of regions 4.5-6.0 ppm.	
Figure S15	^1H - ^1H -TOCSY-NMR (CD_2Cl_2 , 500 MHz) of Tamulamide B (2).	17
Figure S16	^1H - ^1H -ROESY-NMR (CD_2Cl_2 , 500 MHz) of Tamulamide B (2).	18
Figure S17	^1H - ^{13}C -HSQC-NMR (CD_2Cl_2 , 500 MHz) of Tamulamide B (2).	19
Figure S18	^1H - ^{13}C -HMBC-NMR (CD_2Cl_2 , 500 MHz) of Tamulamide B (2).	20

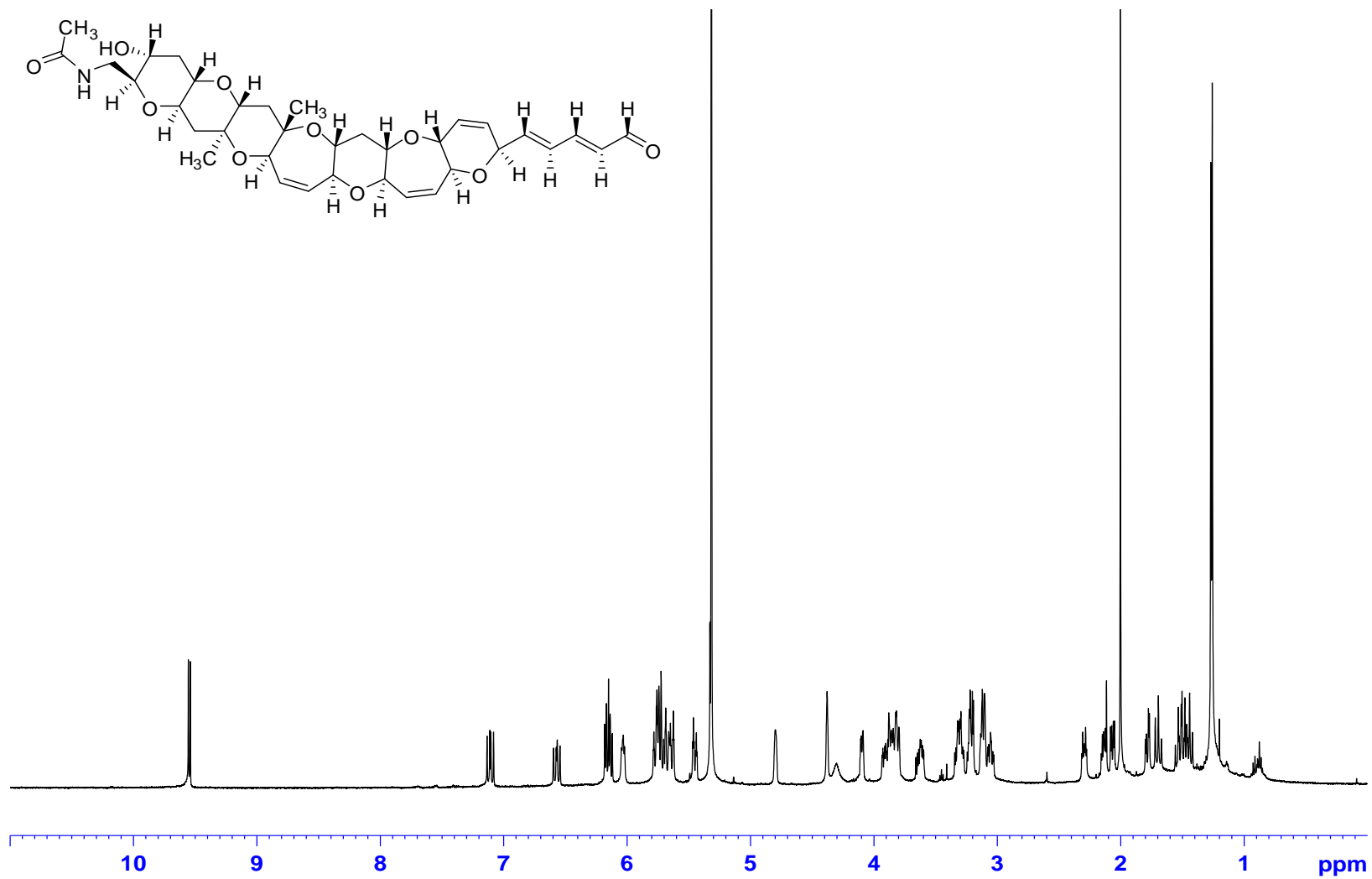


Figure S1: ¹H-NMR (CD₂Cl₂, 500 MHz) of Tamulamide A (1).

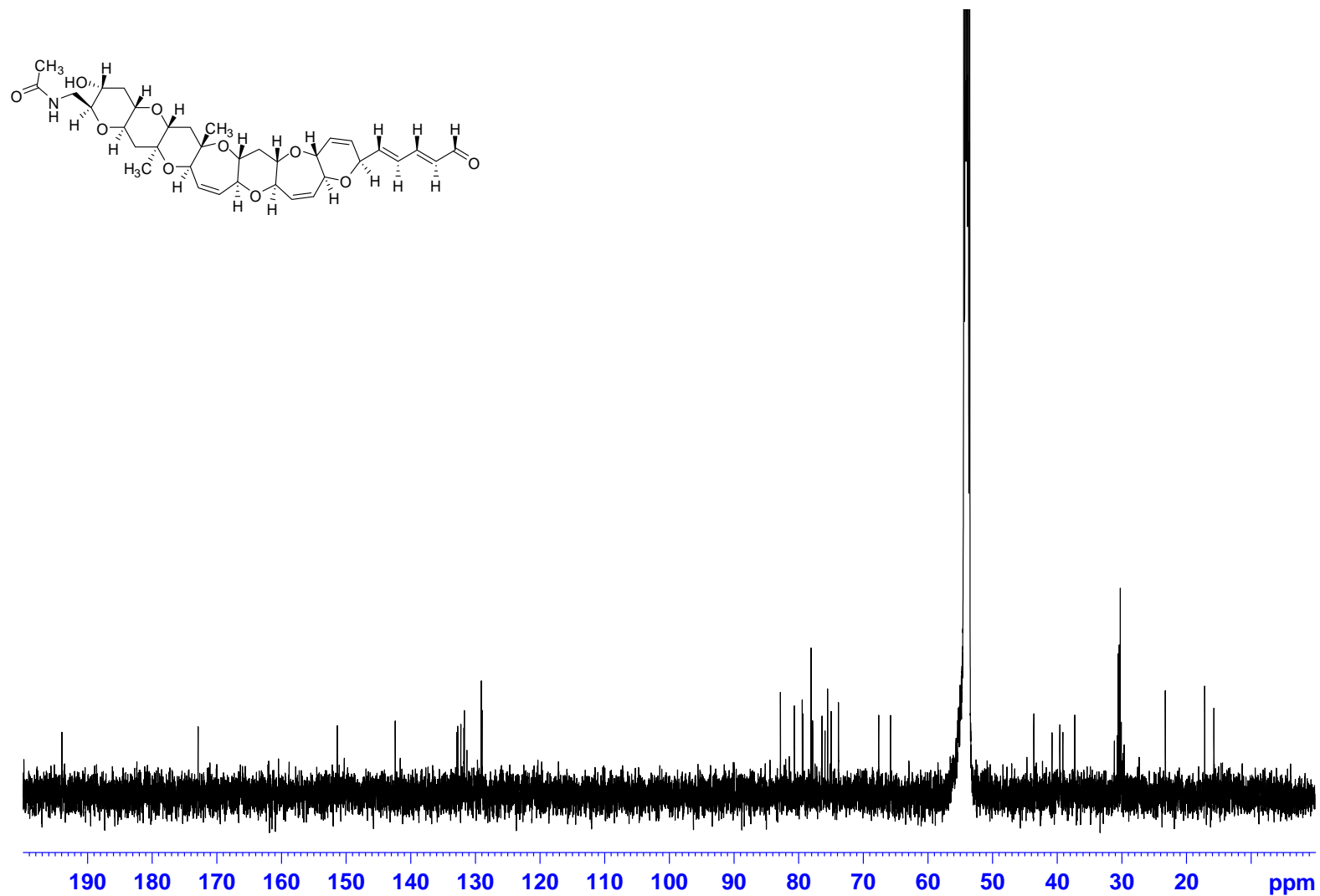


Figure S2: ^{13}C -NMR (CD_2Cl_2 , 500 MHz) of Tamulamide A (1).

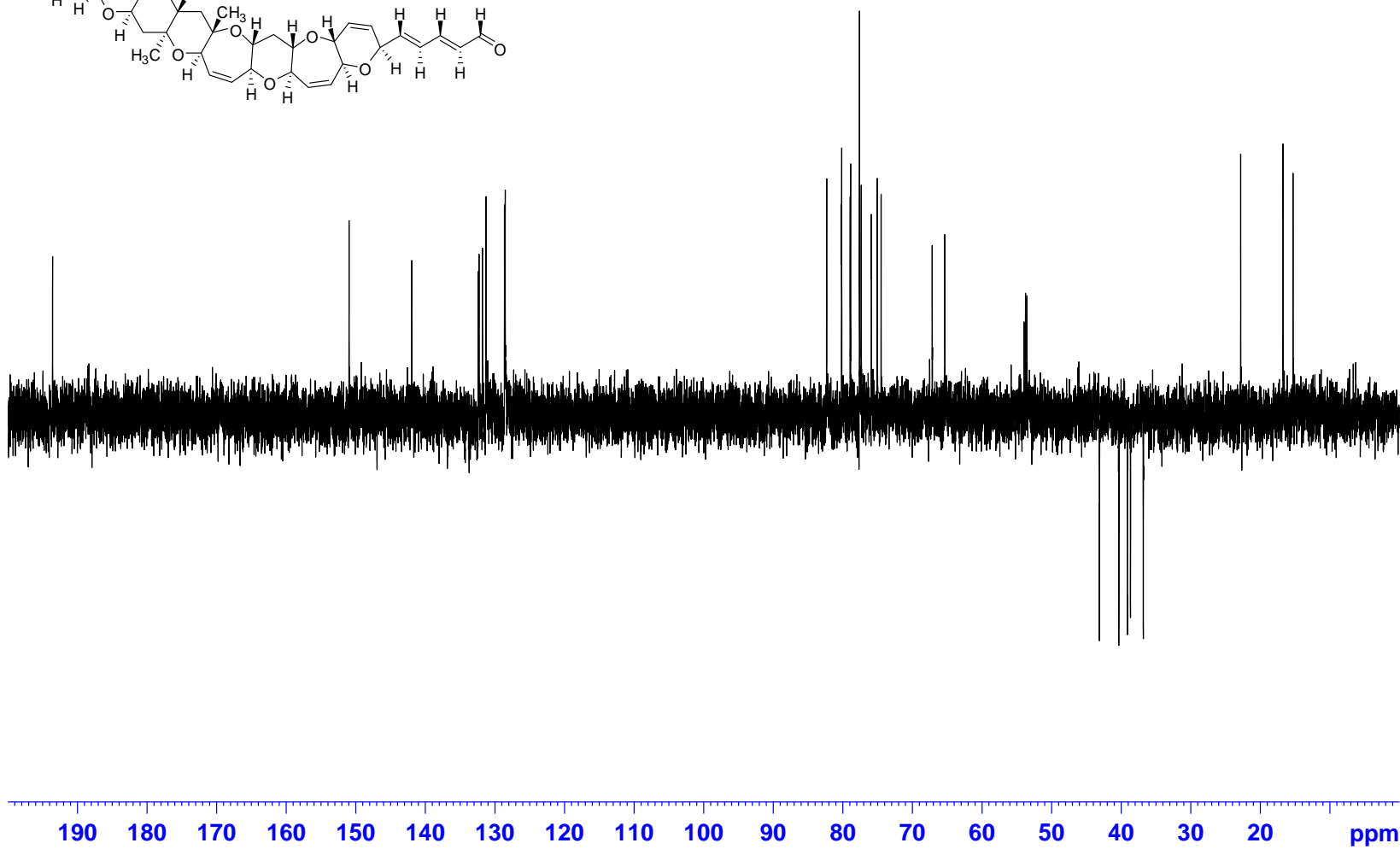
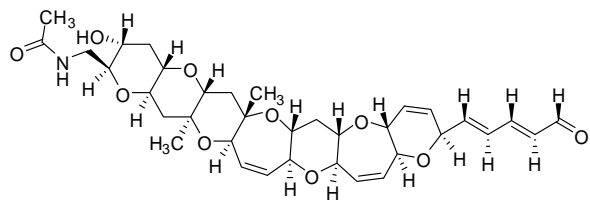


Figure S3: ¹³DEPT-NMR (CD₂Cl₂, 500 MHz) of Tamulamide A (1).

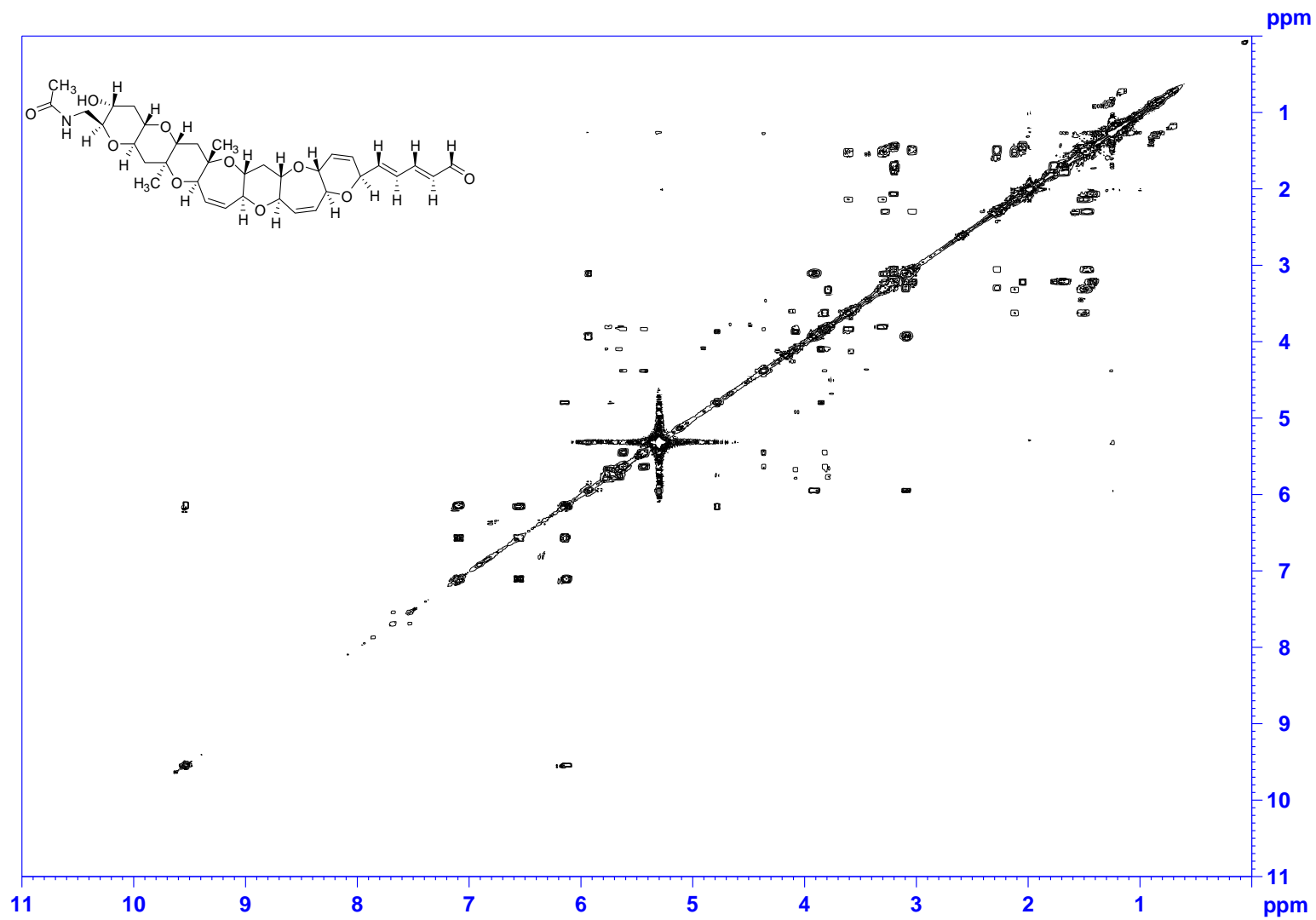
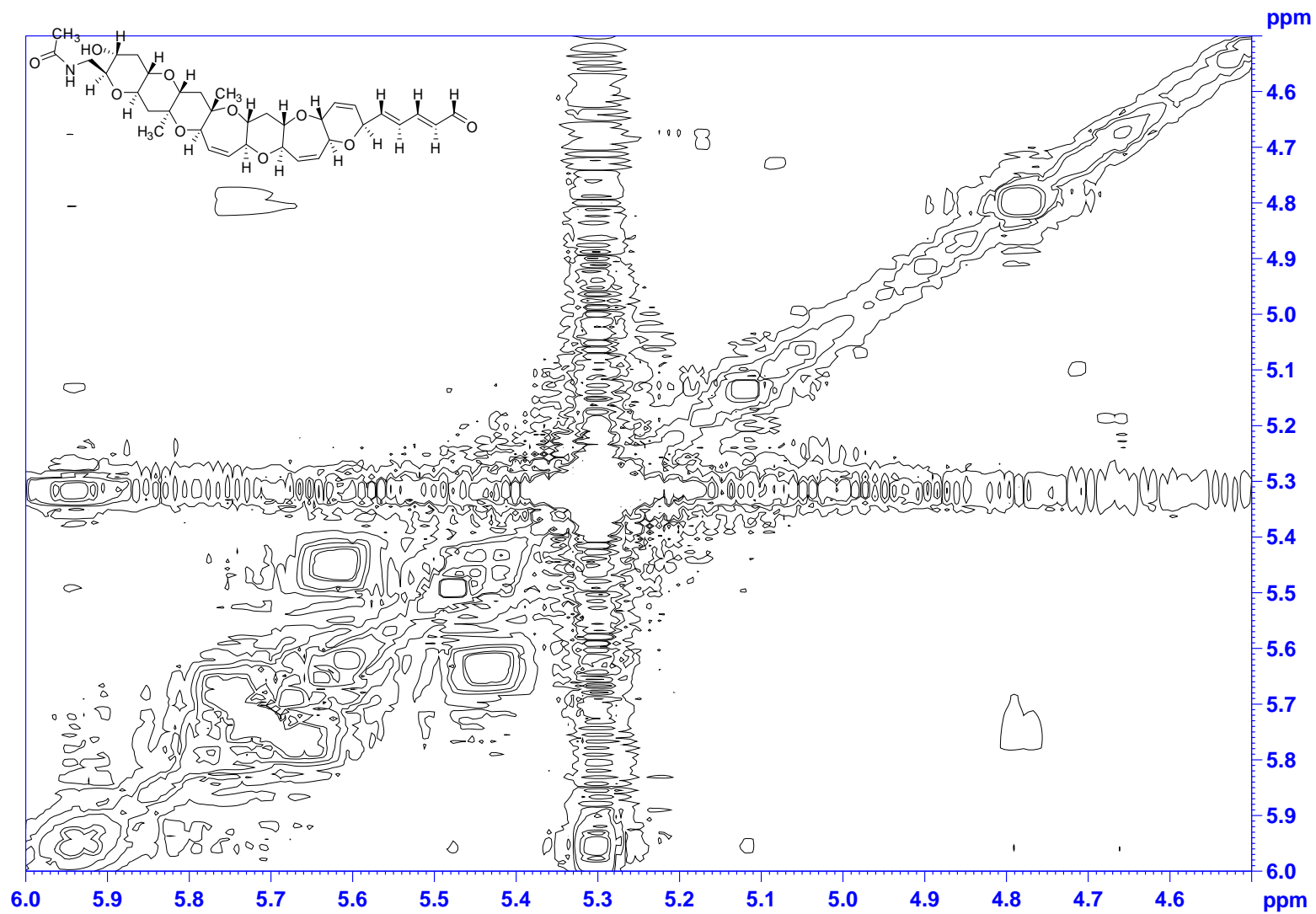
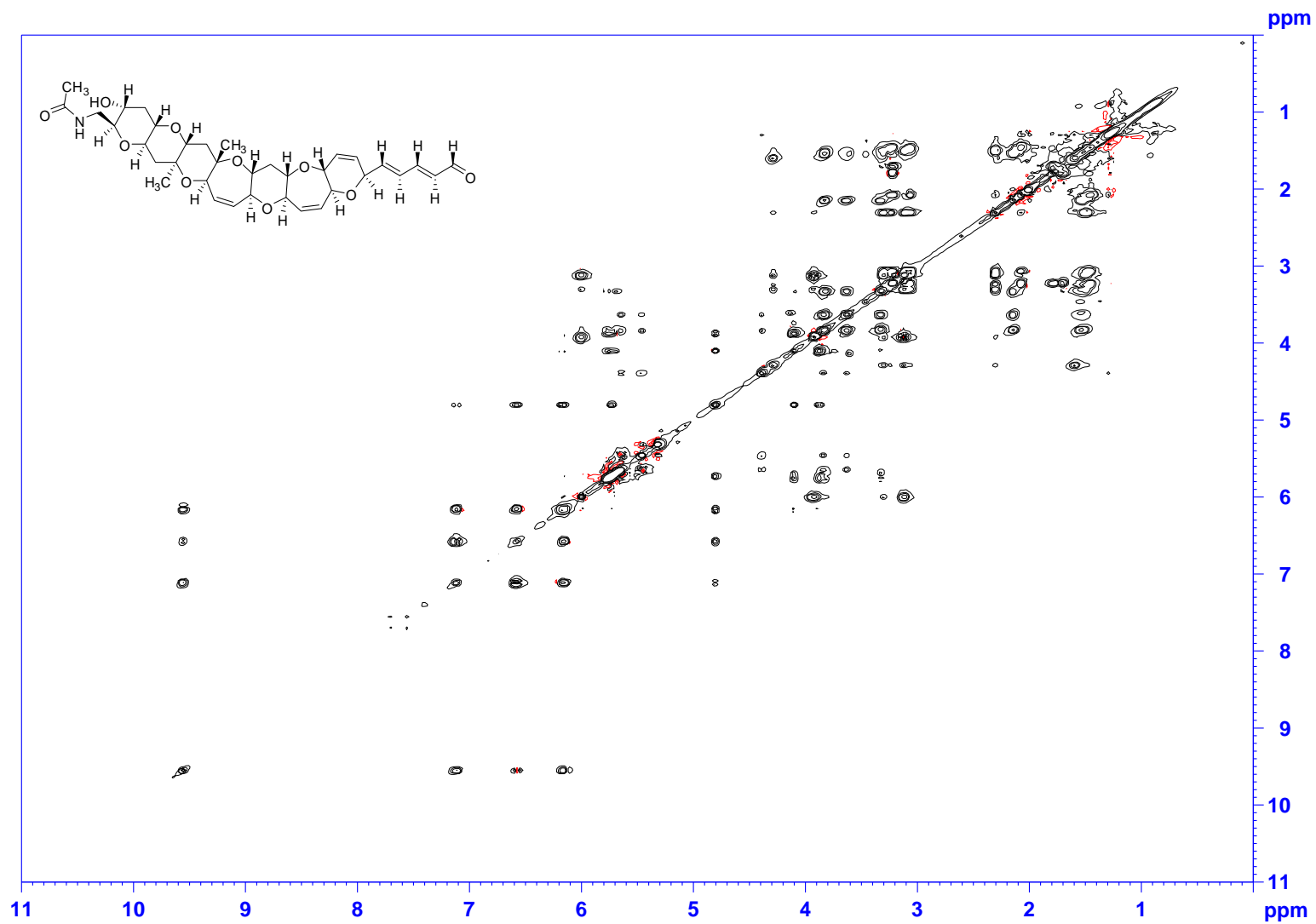


Figure S4: ^1H - ^1H -COSY -NMR (CD_2Cl_2 , 500 MHz) of Tamulamide A (**1**).





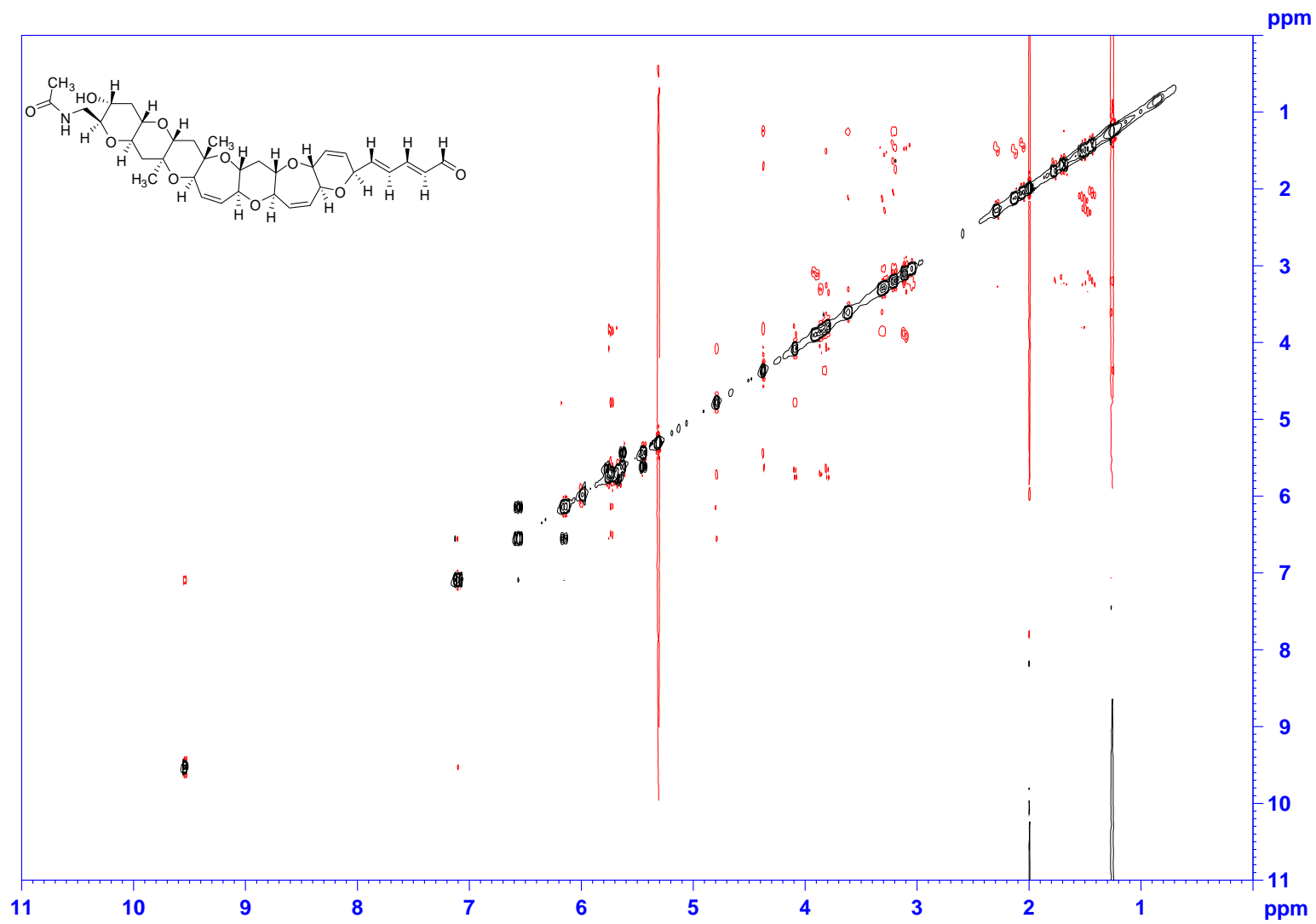


Figure S7: ^1H - ^1H -ROESY-NMR (CD_2Cl_2 , 500 MHz) of Tamulamide A (**1**).

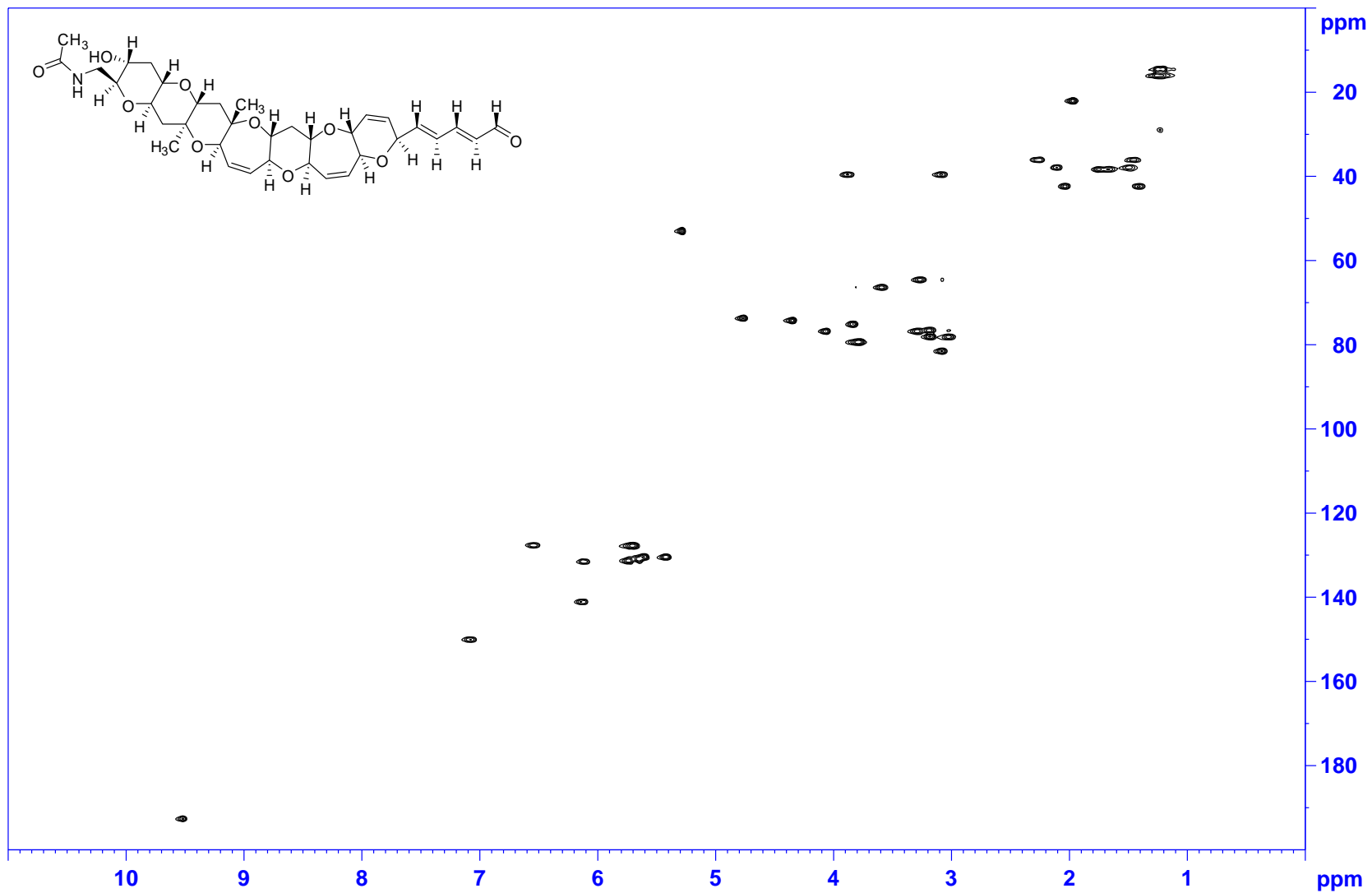


Figure S8: ^1H - ^{13}C -HSQC-NMR (CD_2Cl_2 , 500 MHz) of Tamulamide A (**1**).

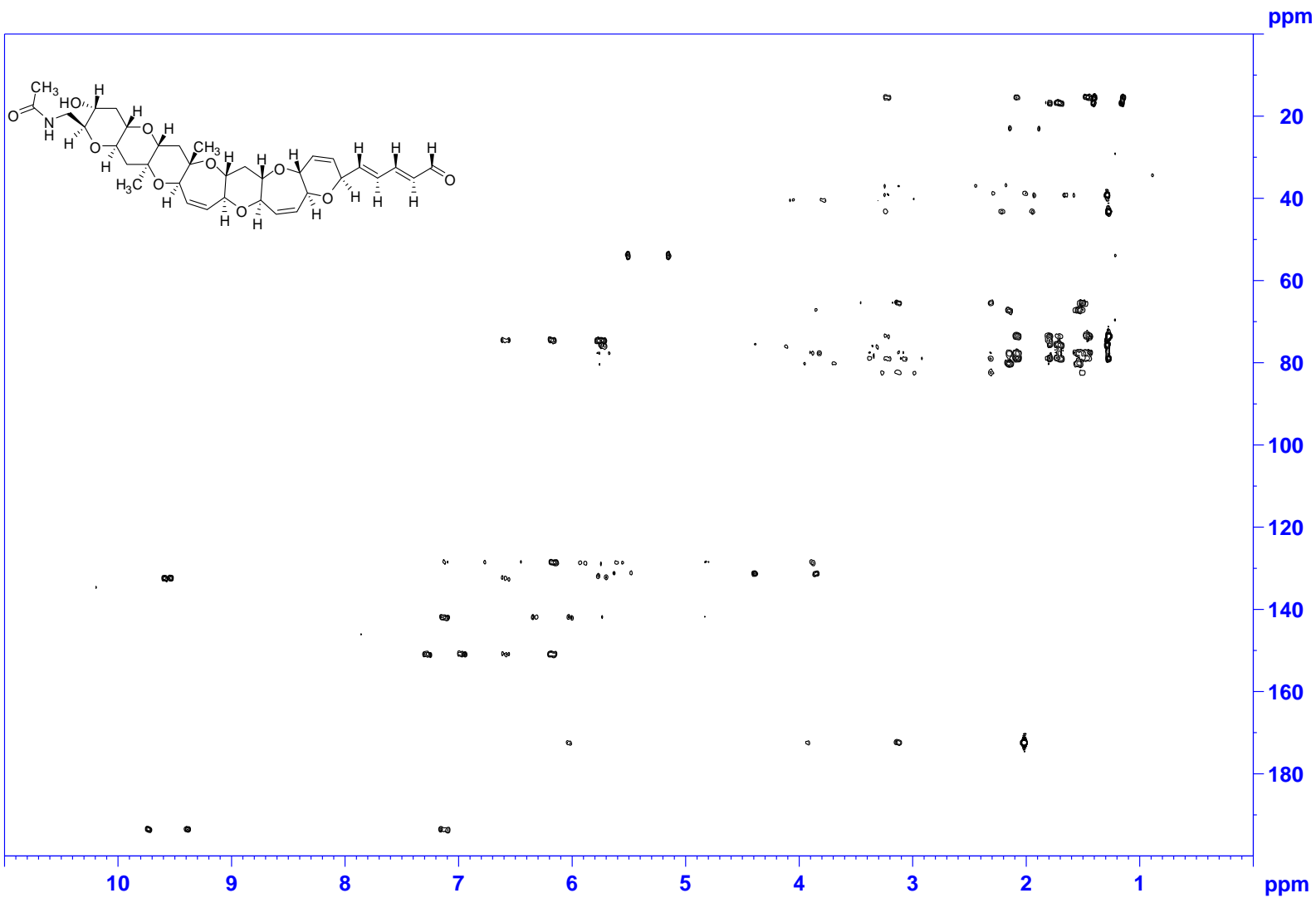


Figure S9: ^1H - ^{13}C -HMBC-NMR (CD_2Cl_2 , 500 MHz) of Tamulamide A (1).

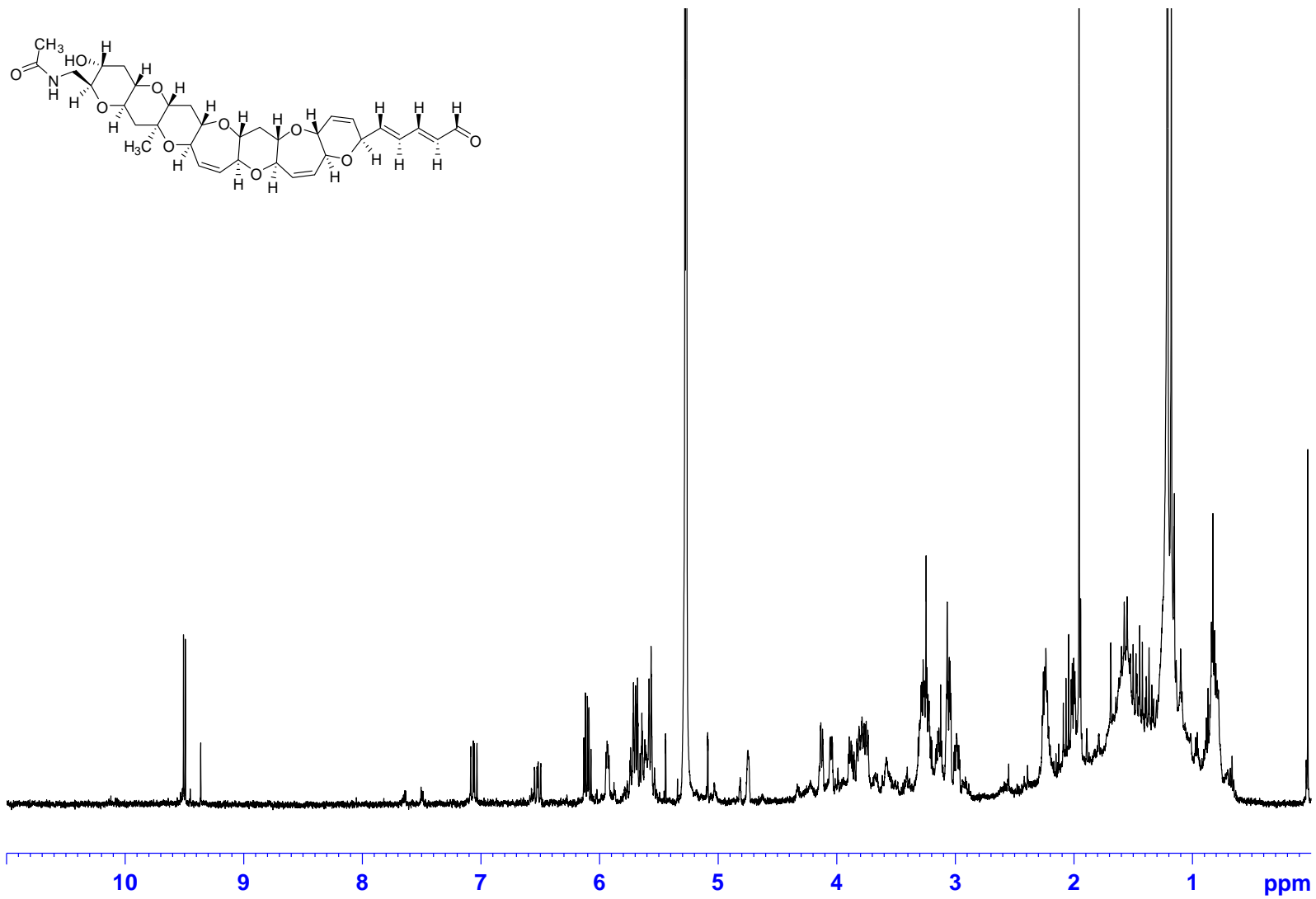


Figure S10: ¹H-NMR (CD₂Cl₂, 500 MHz) of Tamulamide B (2).

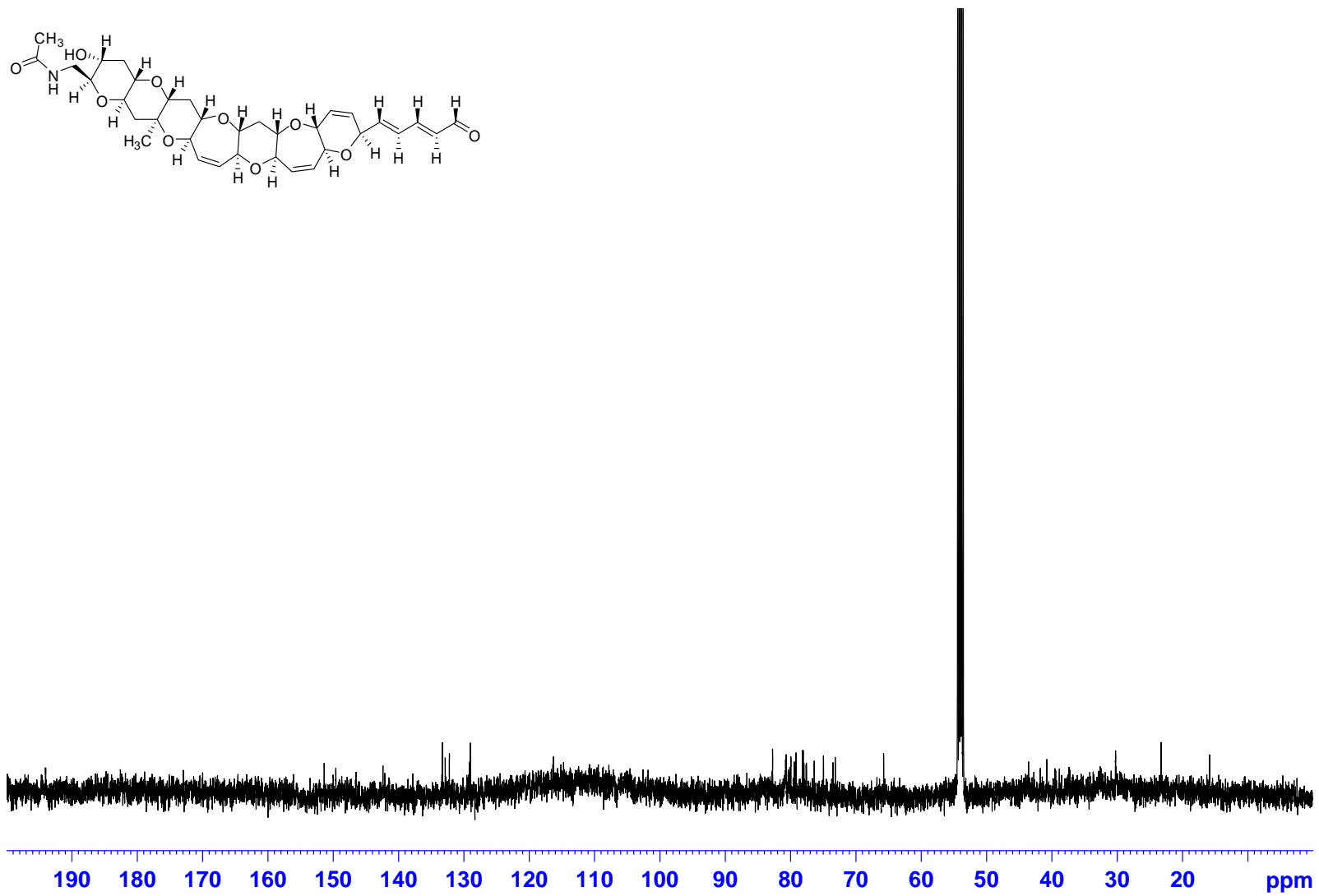


Figure S11: ¹³C-NMR (CD₂Cl₂, 500 MHz) of Tamulamide B (2).

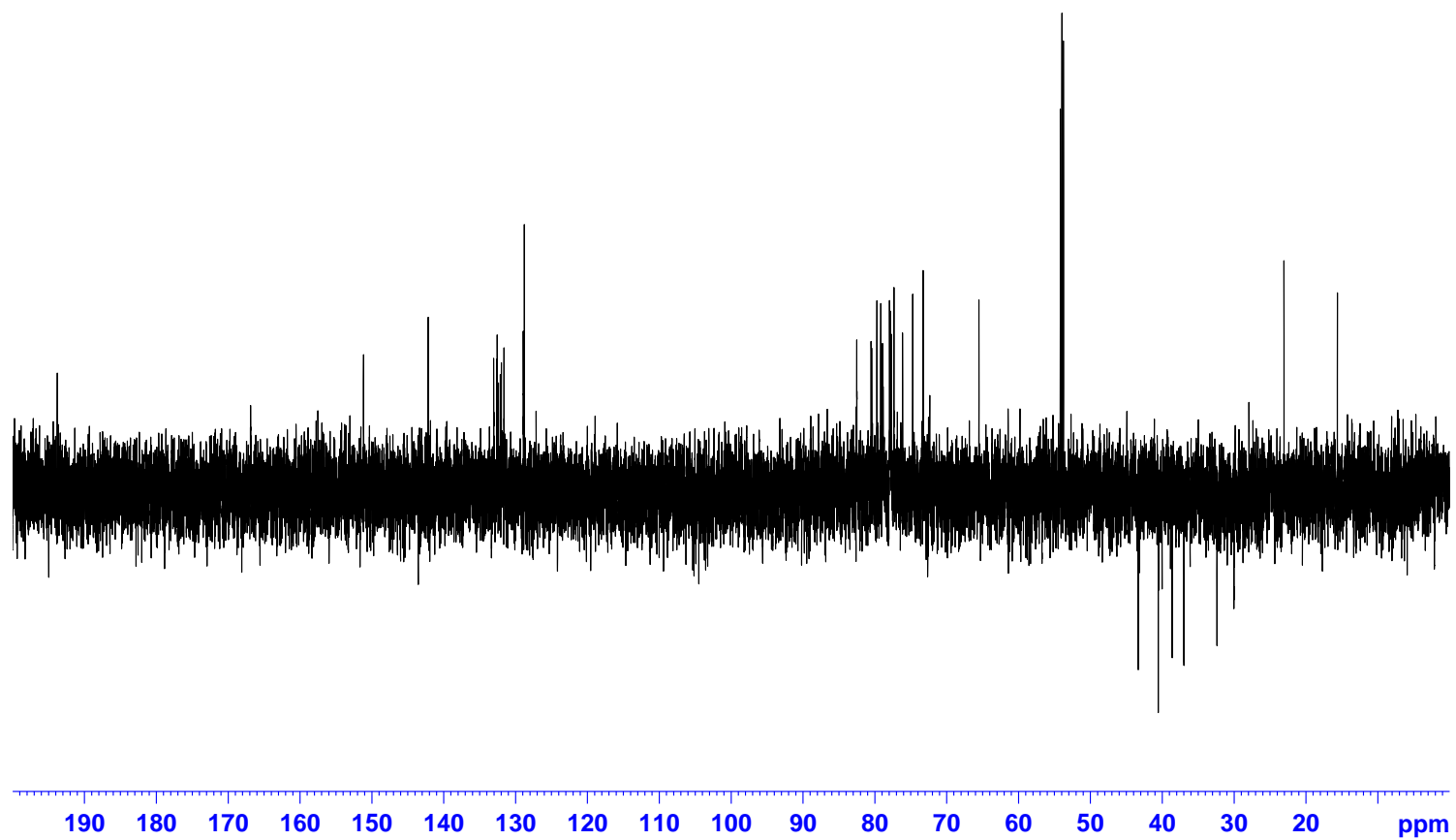
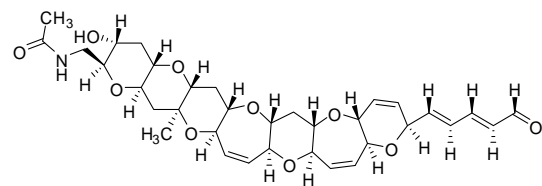


Figure S12: ^{13}C -DEPT-NMR (CD_2Cl_2 , 500 MHz) of Tamulamide B (**2**).

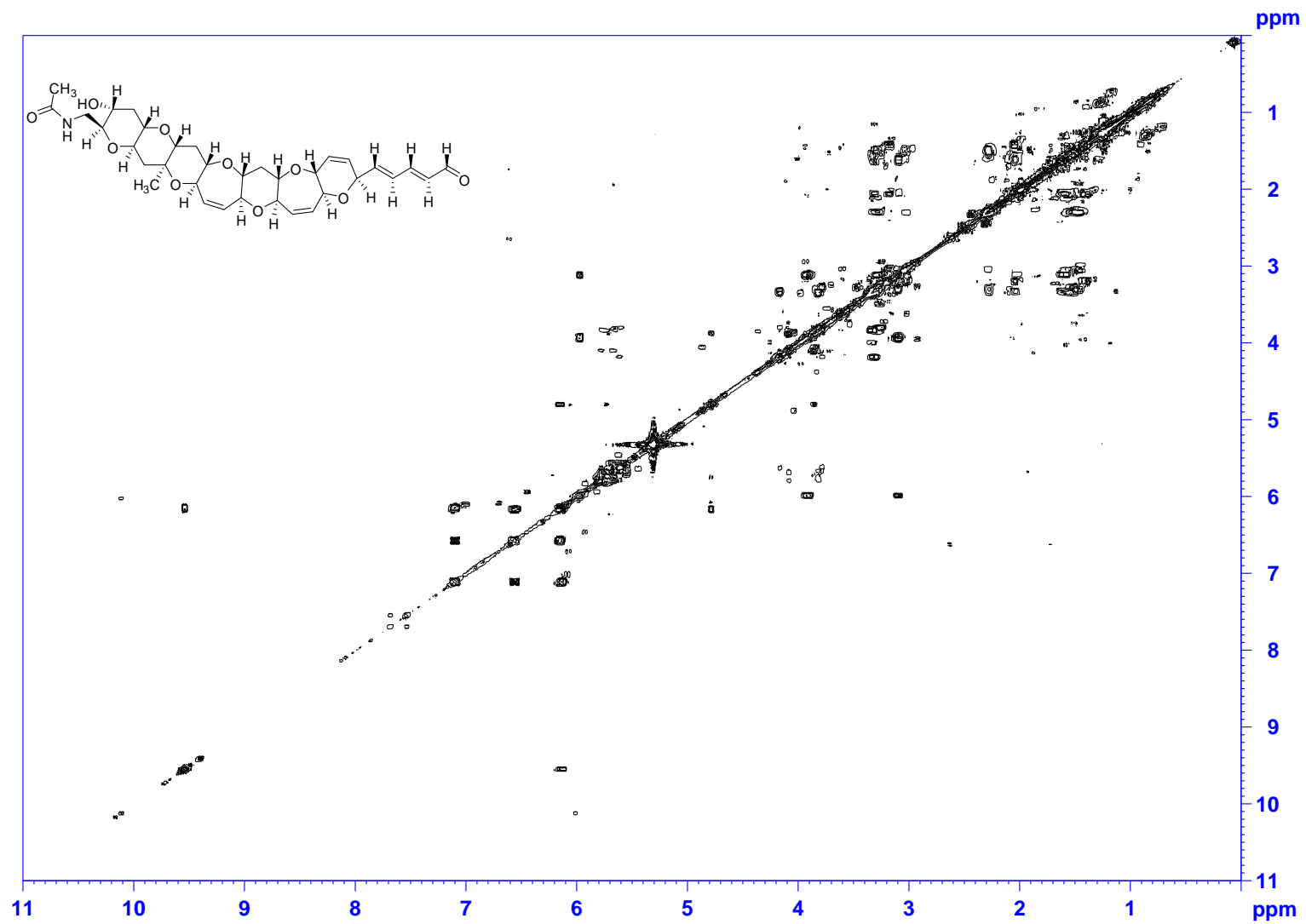


Figure S13: ^1H - ^1H -COSY -NMR (CD_2Cl_2 , 500 MHz) of Tamulamide B (2).

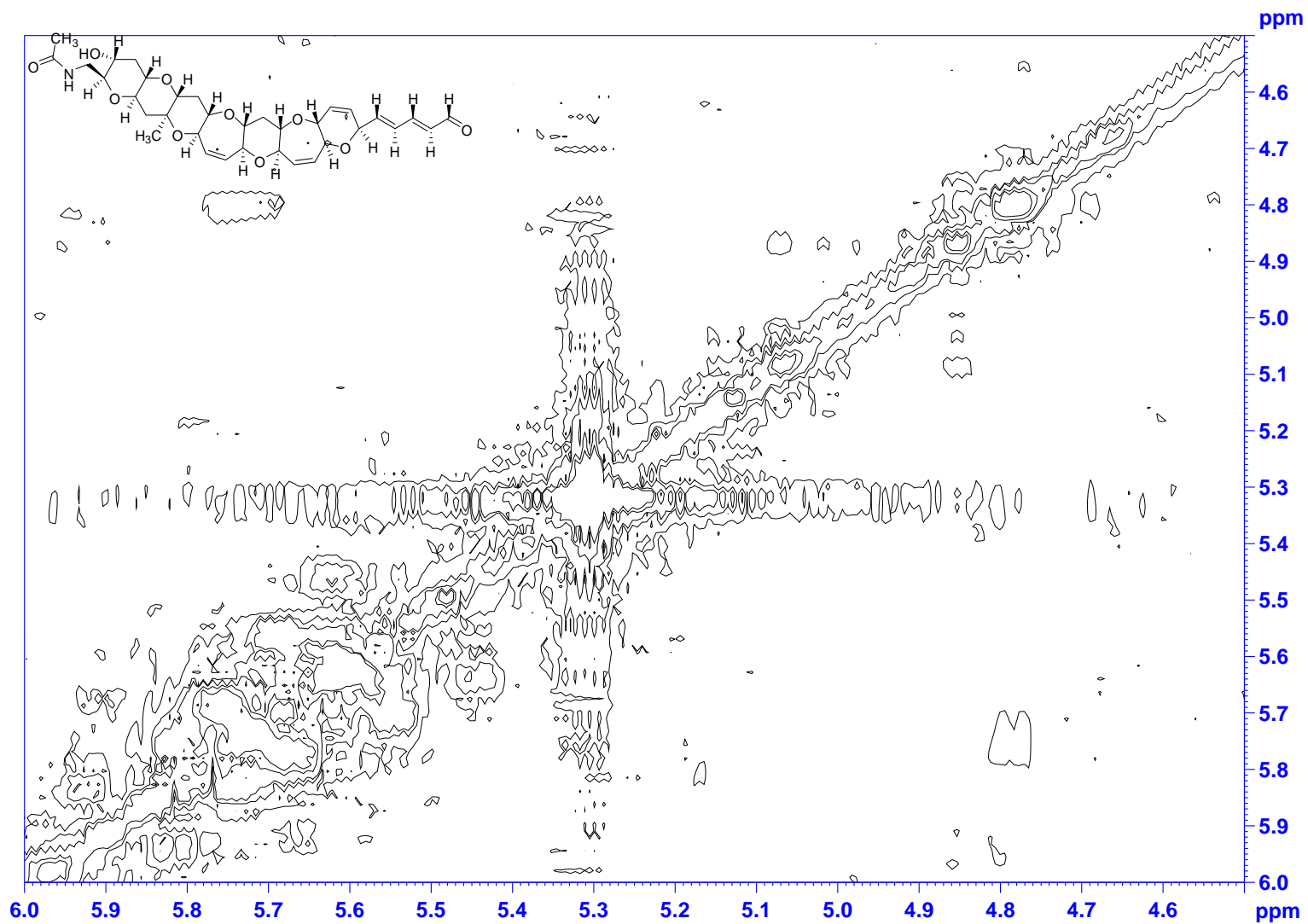


Figure S14: ¹H-¹H-COSY-NMR (CD₂Cl₂, 500 MHz) of Tamulamide B (**2**). Expansion of regions 4.5-6.0 ppm.

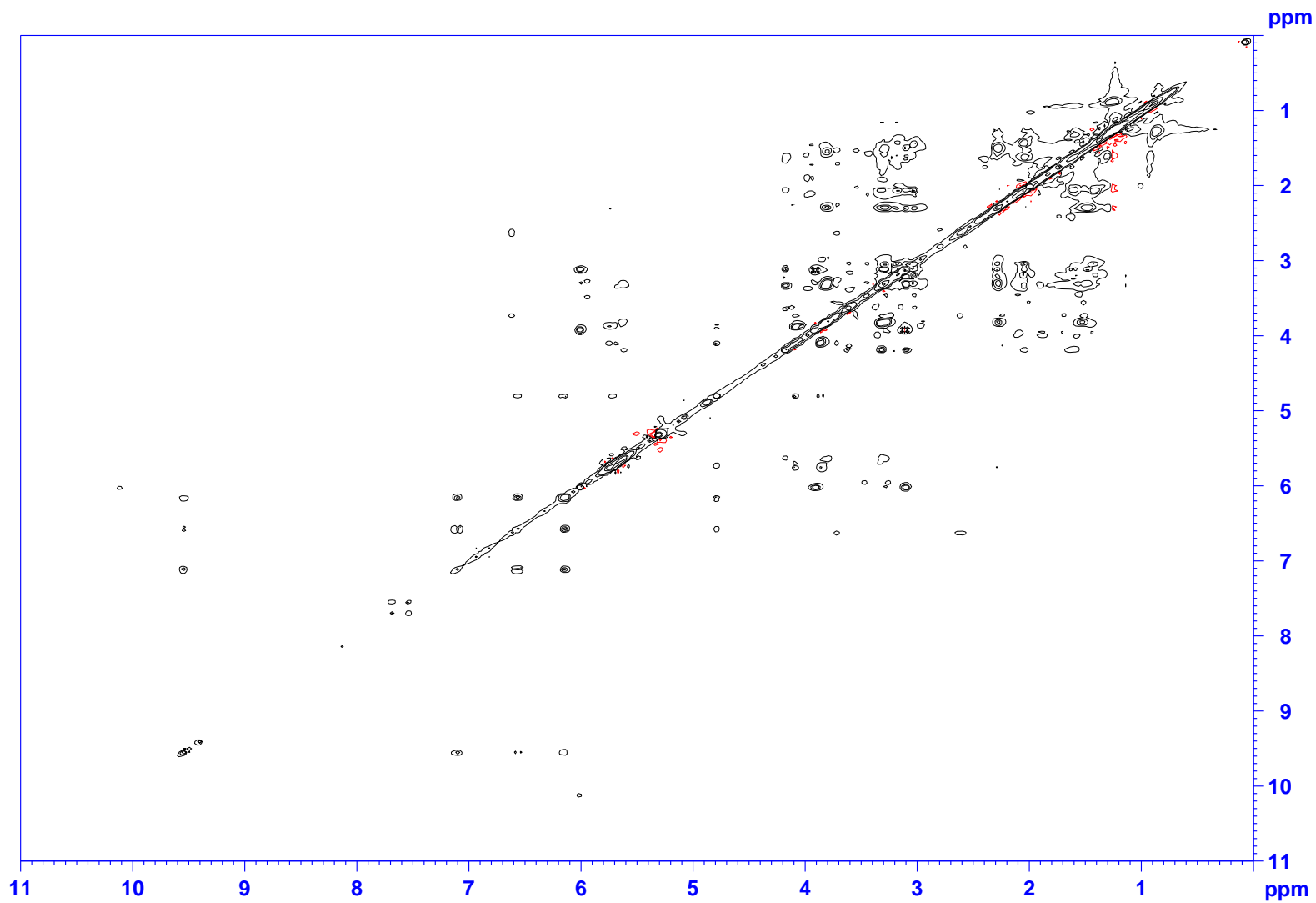


Figure S15: ^1H - ^1H -TOCSY-NMR (CD_2Cl_2 , 500 MHz) of Tamulamide B (2).

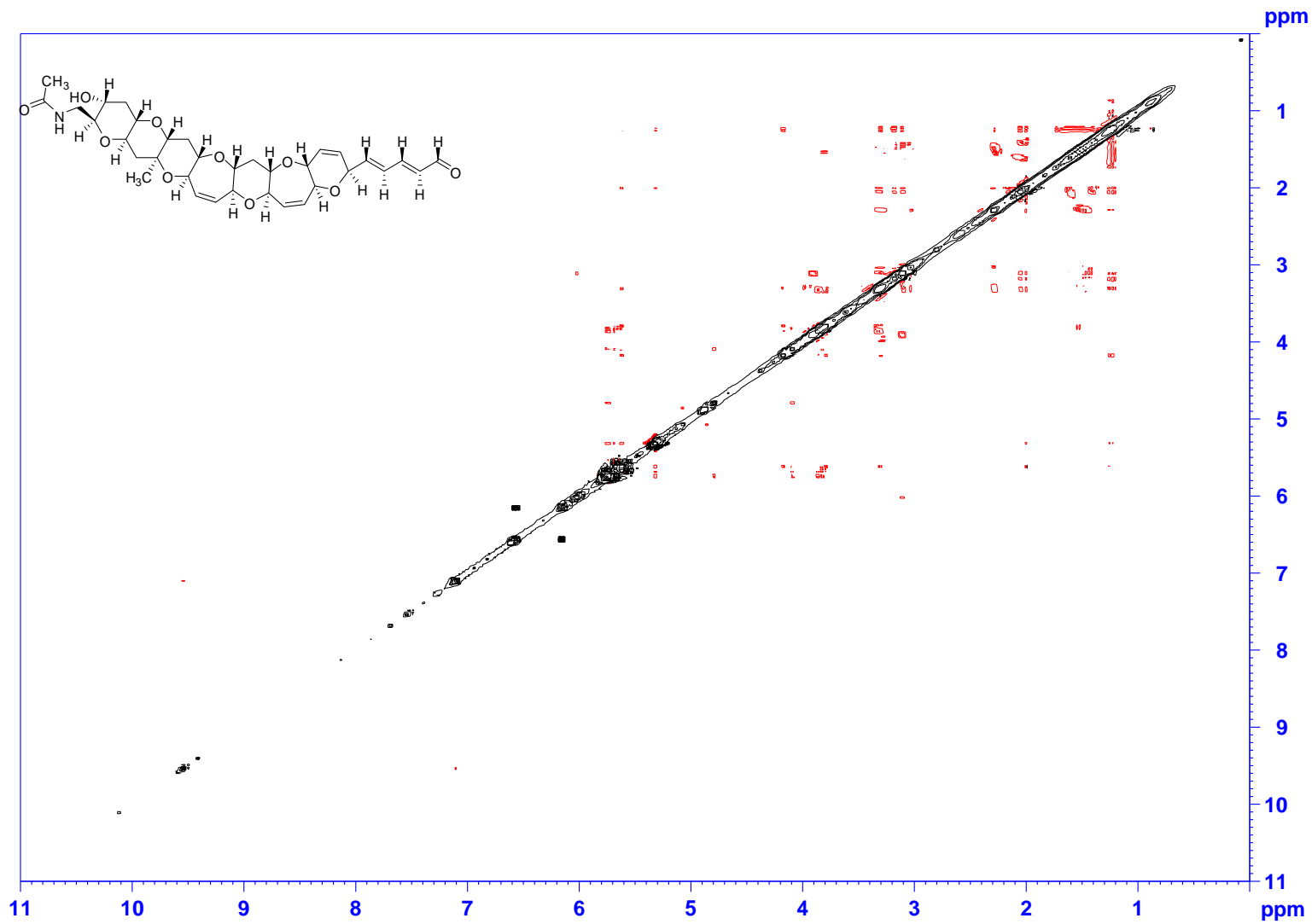


Figure S16: ^1H - ^1H -ROESY-NMR (CD_2Cl_2 , 500 MHz) of Tamulamide B (2).

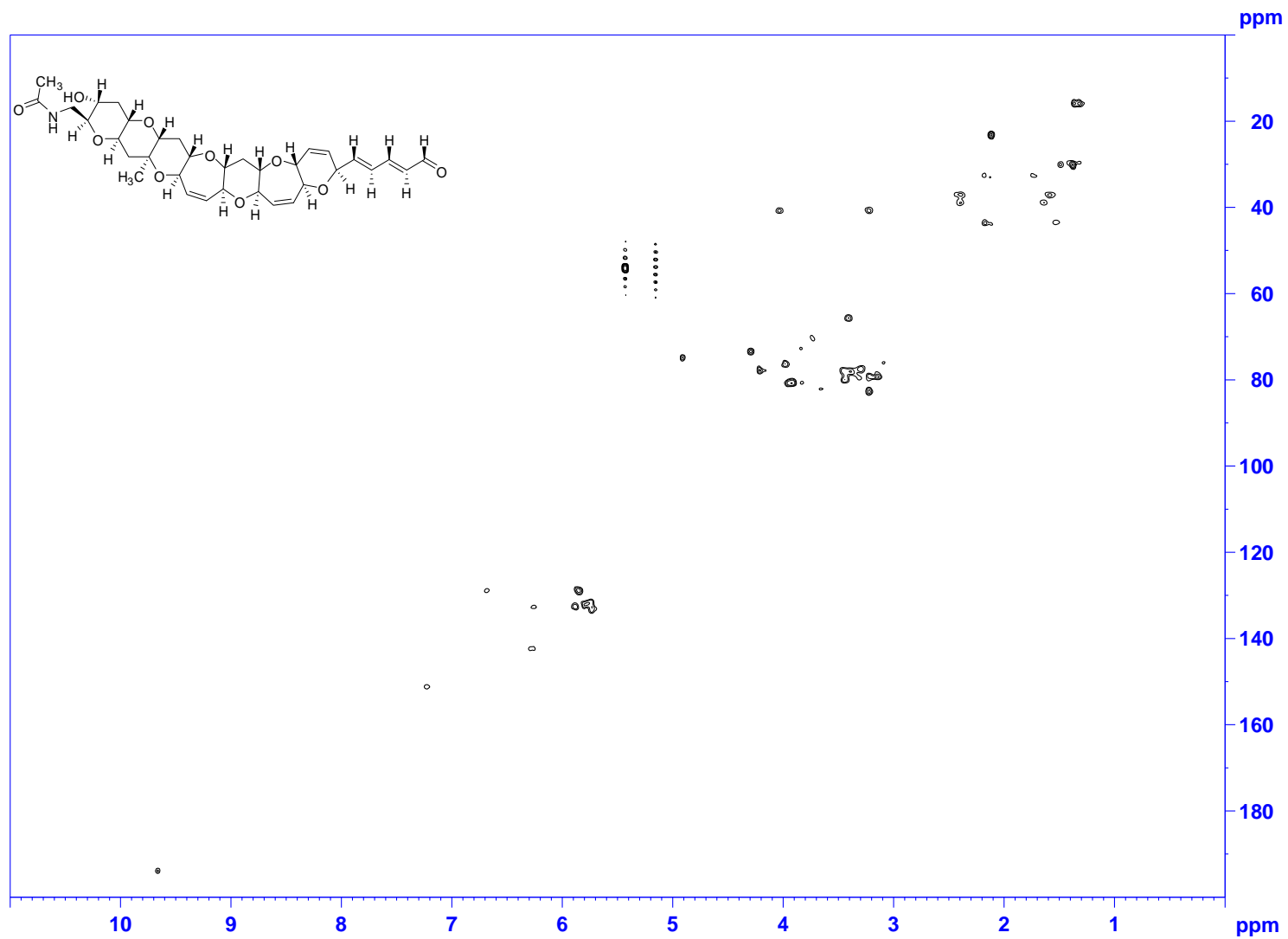


Figure S17: ^1H - ^{13}C -HSQC-NMR (CD_2Cl_2 , 500 MHz) of Tamulamide B (2).

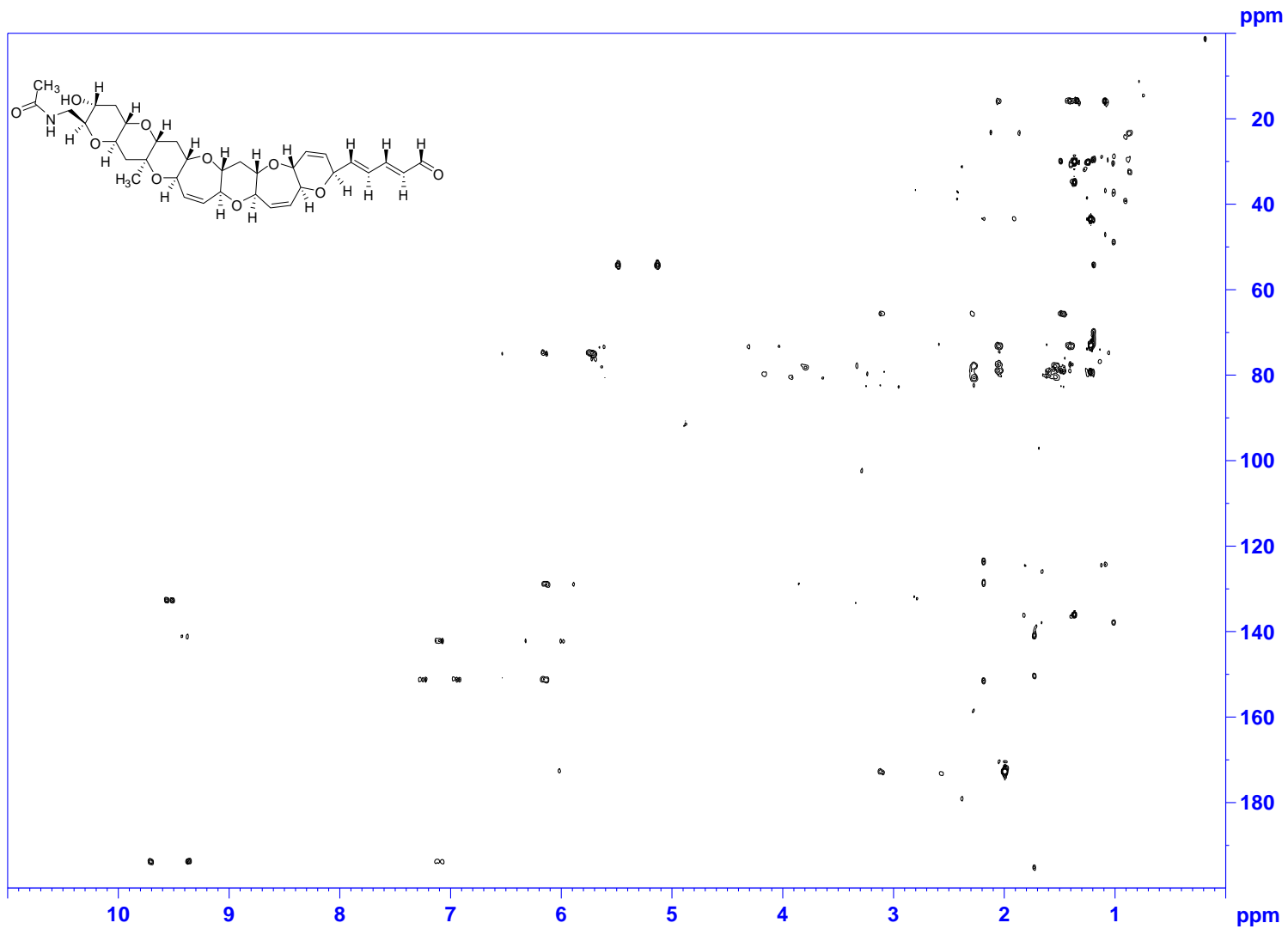


Figure S18: ^1H - ^{13}C -HMBC-NMR (CD_2Cl_2 , 500 MHz) of Tamulamide B (2).

