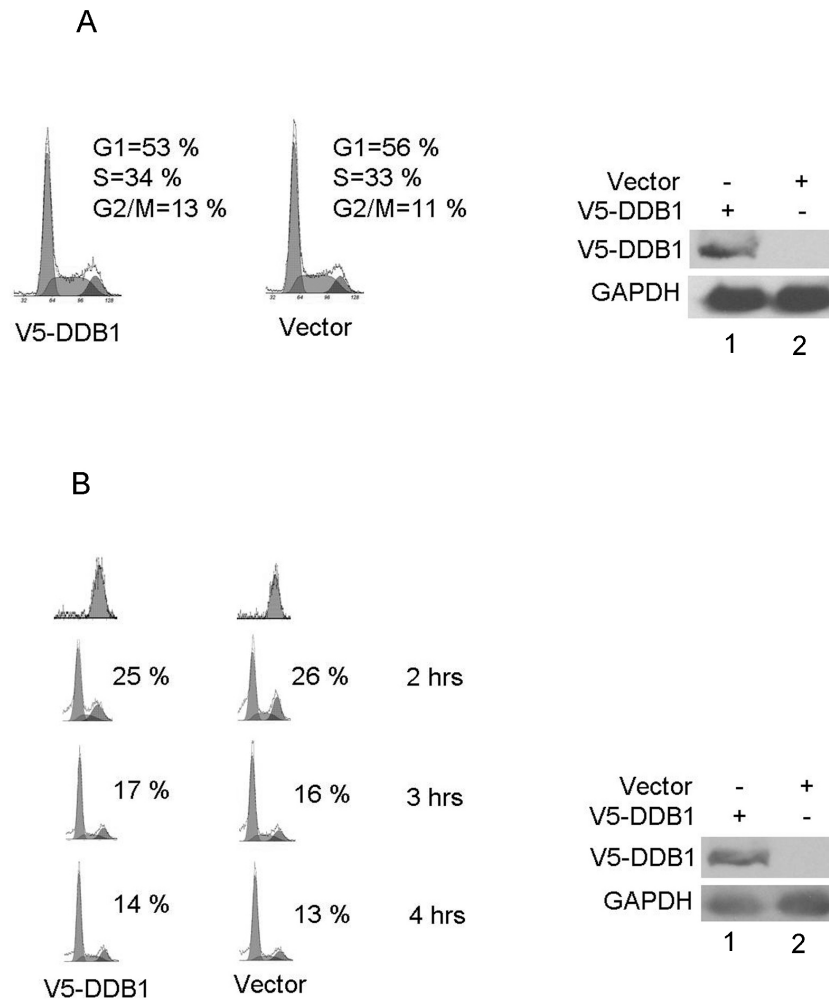


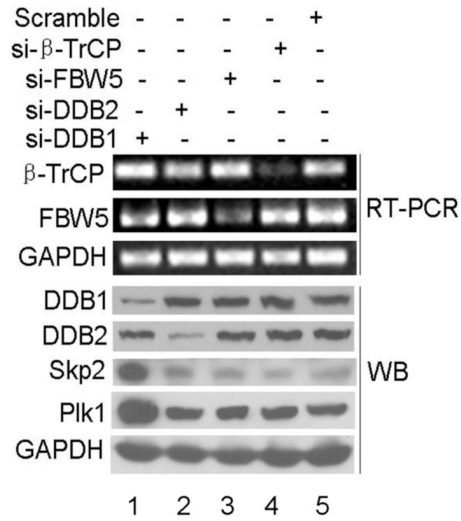
Supplementary Fig. 1



Supplementary Fig. S1. Overexpression of DDB1 does not disturb the cell cycle profile or the progression of mitotic exit.

(A). Cells transfected with the indicated plasmids for 24 hrs were collected. Some of the cells were collected for analysis by flow cytometry (left), and the rest of the cells were analyzed by western blotting with the indicated antibodies (right). (B) Cells transfected with indicated plasmids were synchronized in M phase by incubation with 60 ng/L nocodazole for 12 hrs. M phase cells selected by shake-off were released for the indicated time. Some of the cells were collected for analysis by flow cytometry (left), and the rest of the cells were analyzed by western blotting with the indicated antibodies (right). Note: The percentages of M phase cells are indicated.

Supplementary Fig. 2



Supplementary Fig. S2. Depletion of DDB2, FBW5 or β -TrCP does not stabilize Skp2 and Plk1.

Cells transfected with the indicated siRNAs for 48 hrs were collected for RT-PCR or western blot (WB) as indicated.