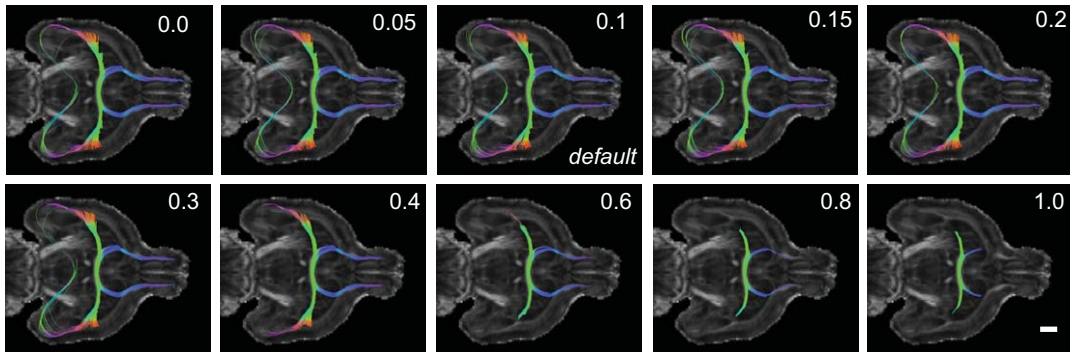
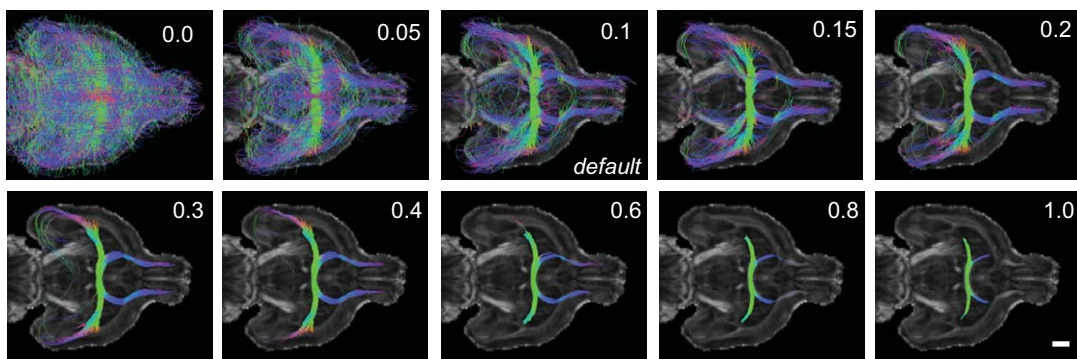


Moldrich et al., Supplementary Figure 4.

A. FOD determinant in deterministic tractography. Step size = 0.01, curvature = 0.15

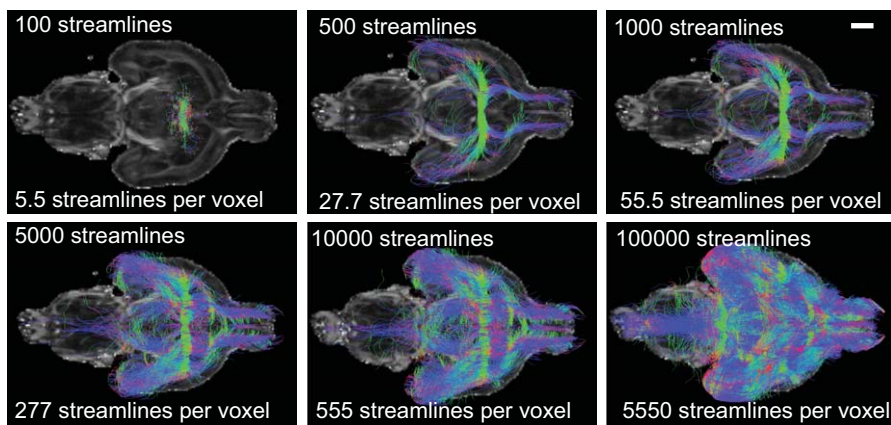


B. FOD determinant in probabilistic tractography. Step size = 0.01, curvature = 0.07



C. AC midline ROI (18 voxels).

Step = 0.01, curv. = 0.07, FOD = 0.1, varying streamline number



D. Maximum projection images of the AC.

