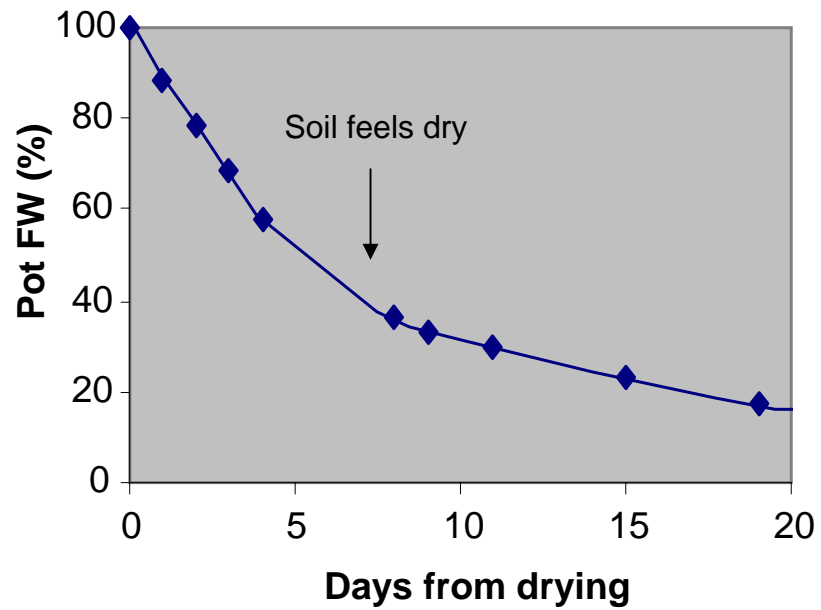


Supplemental Fig. S1. Expression of the *AtVAMP711-714* genes in wild type (wt) and antisense 2092 plants



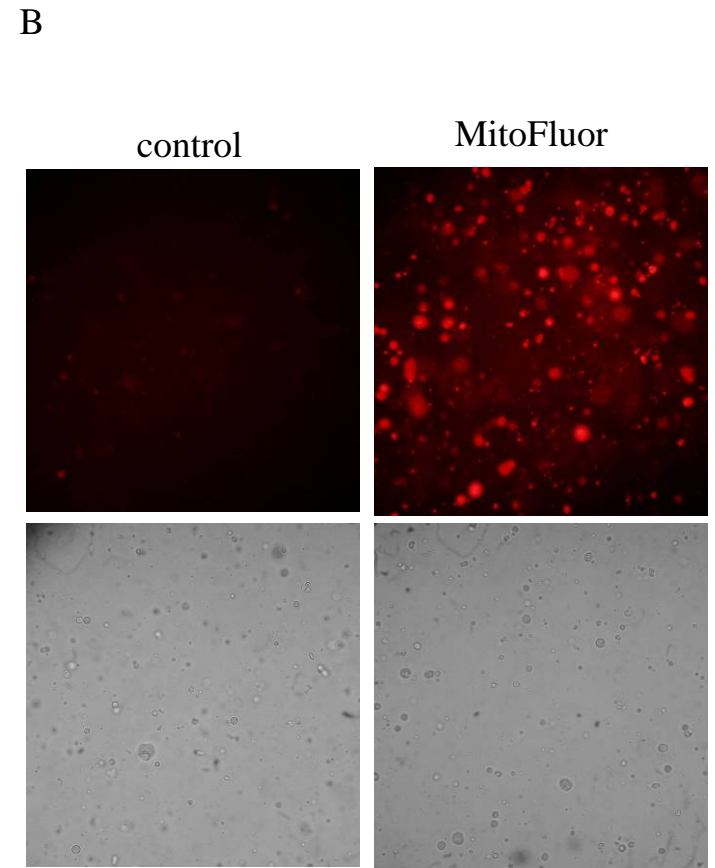
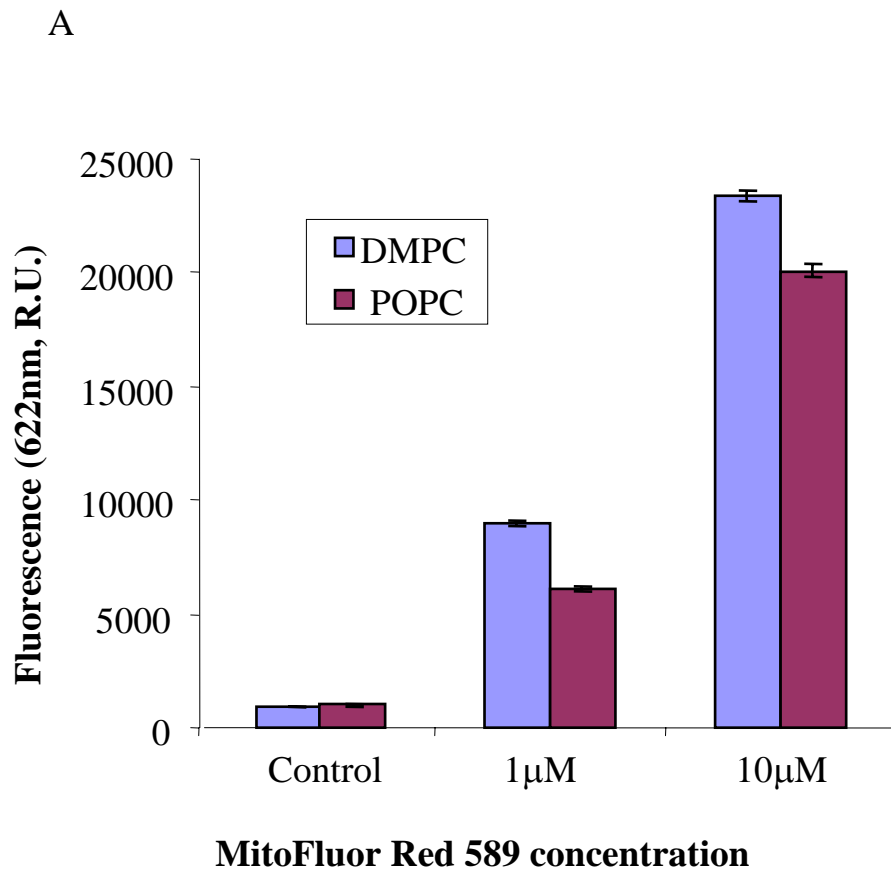
Supplemental Fig. S2A Moisture content of pots during drought experiment

2091

wt



Supplemental Fig. S2B Drought in wild-type and antisense plants grown under long day conditions



Supplemental Fig S3 Liposome Membrane staining with MitoFluor Red 589

Supplemental Fig S4 Complete Z stack of guard cells presented in fig. 3B

Movie of H2DCFDA stained wild type guard cells, Control

Movie of MitoFluor Red 589 stained wild type guard cells, Control

Movie of Merged green and red filters of wild type guard cells, Control

Movie of H2DCFDA stained 2091 antisense guard cells, Control

Movie of MitoFluor Red 589 stained 2091 antisense guard cells, Control

Movie of Merged green and red filters of 2091 antisense guard cells, Control

Movie of H2DCFDA stained wild type guard cells, ABA

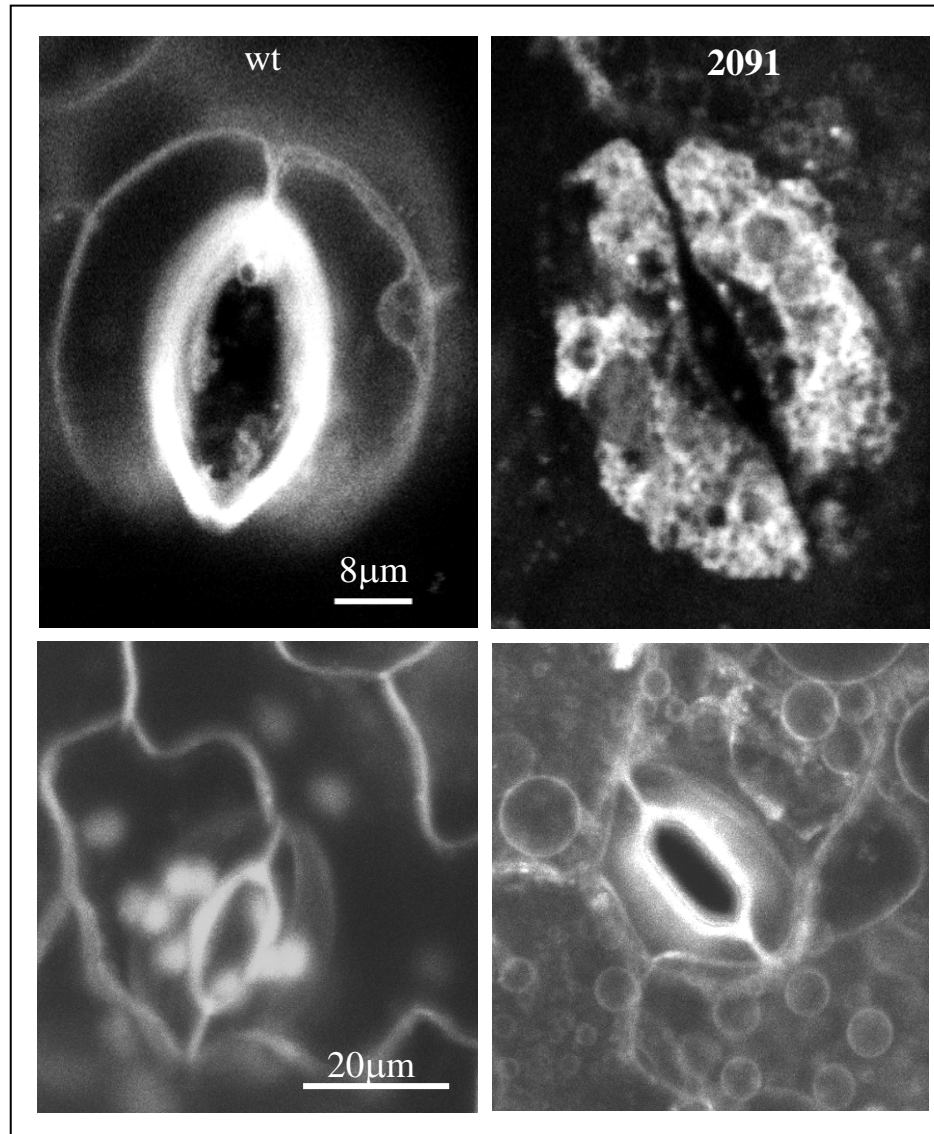
Movie of MitoFluor Red 589 stained wild type guard cells, ABA

Movie of Merged green and red filters of wild type guard cells, ABA

Movie of H2DCFDA stained 2091 antisense guard cells, ABA

Movie of MitoFluor Red 589 stained 2091 antisense guard cells, ABA

Movie of Merged green and red filters of 2091 antisense guard cells, ABA



Supplemental Fig. S5 – Staining of stomata and epidermal pavement cells with FM 4-64.

Supplemental Fig. S6. Induction of Intracellular ROS by ABA in mesophyll cells of wild type plants

