

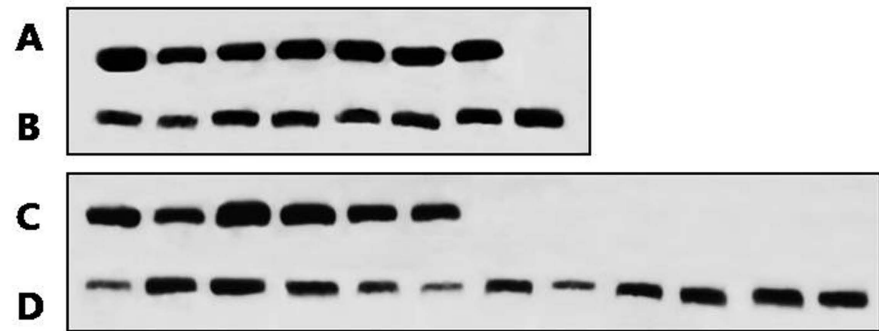
PROTEOMICS

**Supporting Information
for Proteomics Clin. Appl.
DOI 10.1002/prca.200800057**

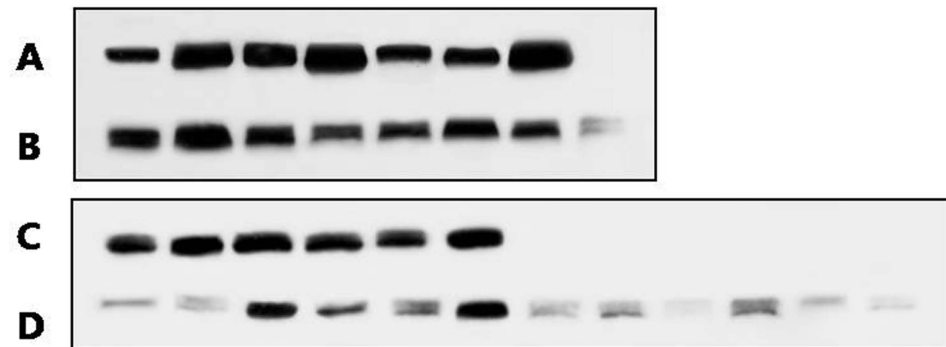
Jung-Young Park, Joo Hee Mun, Beom Hee Lee, Sun Hee Heo,
Gu-Hwan Kim and Han-Wook Yoo

**Proteomic analysis of sera of asymptomatic, early-stage patients with Wilson's
disease**

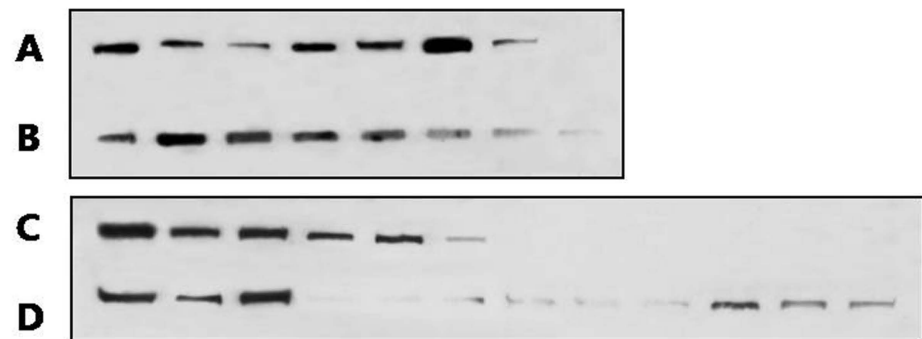
Complement component C3



Complement factor B



Alpha 2 Macroglobulin



GAPDH

