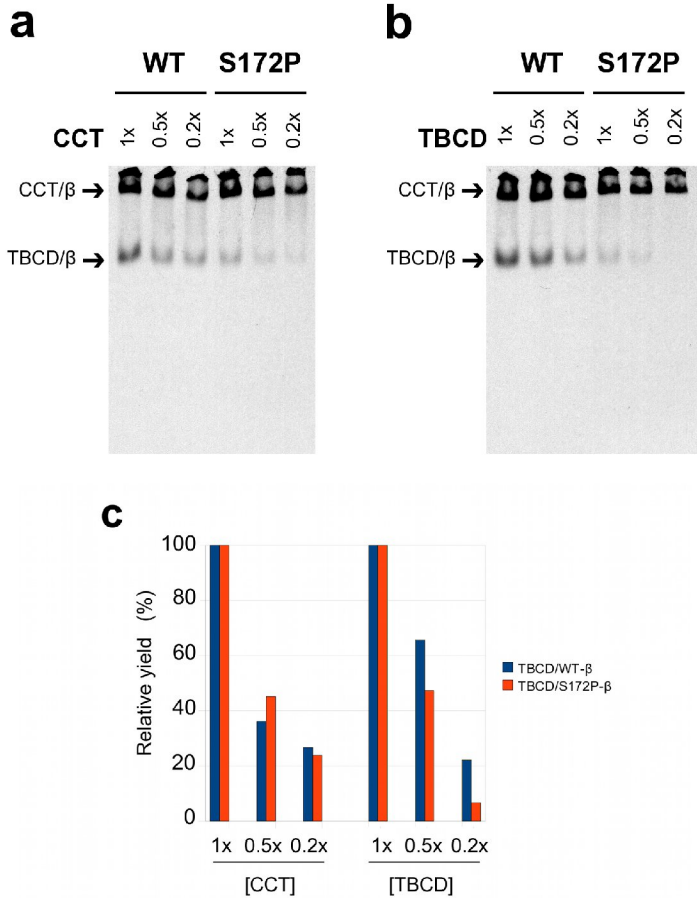


Supplementary Figure 9: Lowered Affinity of CCT-generated S172P Folding Intermediates for TBCD.



Supplementary Figure 9: Lowered Affinity of CCT-generated S172P Folding Intermediates for TBCD. (a,b) Analysis on a non-denaturing gel of the products of reconstituted *in vitro* folding reactions containing a range of concentrations of purified CCT or TBCD. (c), Quantitation of the data shown in (a) and (b). The level of radioactivity present in complexes at the 1x concentration is taken as 100. Bars represent the average of two experiments. Arrows in (a) and (b) denote the migration positions of the CCT/ β -tubulin binary complex (CCT/ β) and the TBCD/ β -tubulin co-complex.