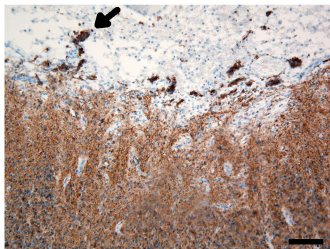


Supplementary Figure 4: Neuronal Overmigration into Leptomeningeal Spaces



Supplementary Figure 4: Neuronal Overmigration into Leptomeningeal Spaces. Neurospecific MAP-2 immunostaining on a 27GW cortical section. Note the presence of neuronal cells clusters (black arrow) beyond the basement membrane, in the meninges. Scale bar : 100 μm .