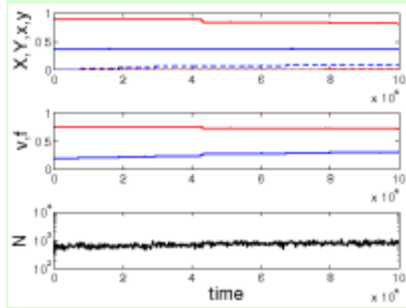


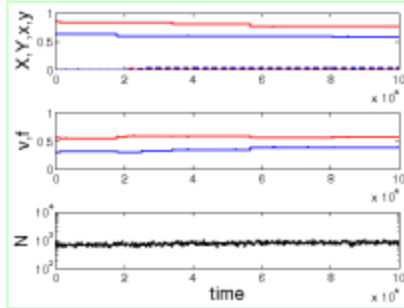
S=16.p=0.25

Number of images: 162

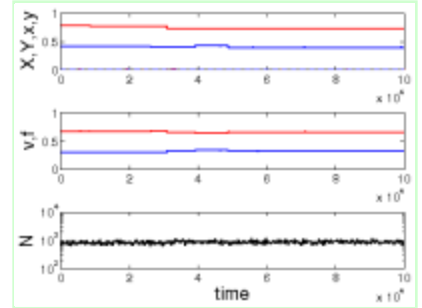
Created on: Monday 29 March 2010



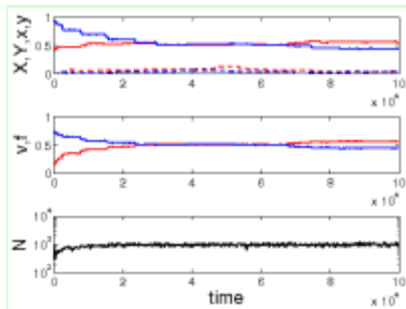
a=0.5.b=0.50.s=0.5.mu=0.00001.1.eps



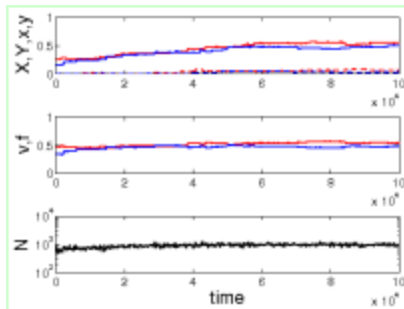
a=0.5.b=0.50.s=0.5.mu=0.00001.2.eps



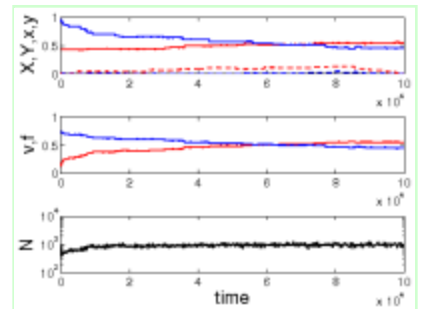
a=0.5.b=0.50.s=0.5.mu=0.00001.3.eps



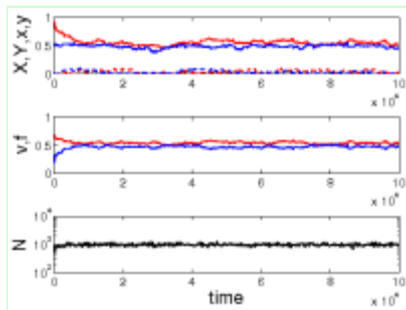
a=0.5.b=0.50.s=0.5.mu=0.00010.1.eps



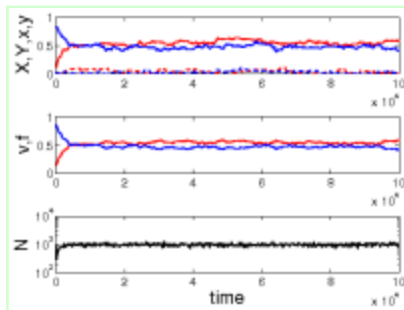
a=0.5.b=0.50.s=0.5.mu=0.00010.2.eps



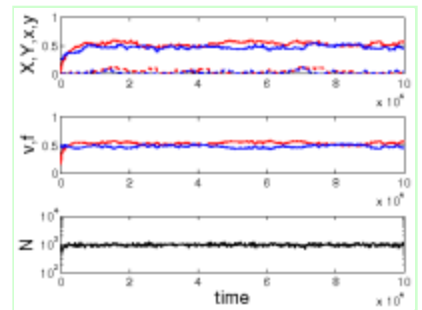
a=0.5.b=0.50.s=0.5.mu=0.00010.3.eps



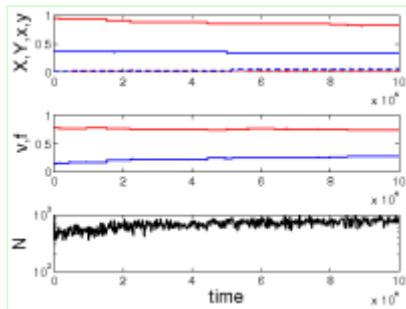
a=0.5.b=0.50.s=0.5.mu=0.00100.1.eps



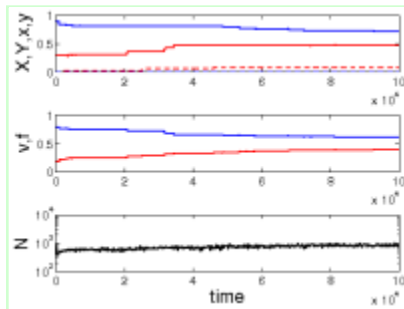
a=0.5.b=0.50.s=0.5.mu=0.00100.2.eps



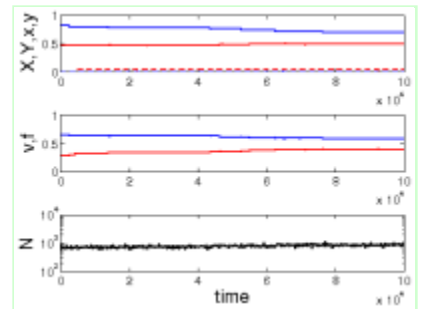
a=0.5.b=0.50.s=0.5.mu=0.00100.3.eps



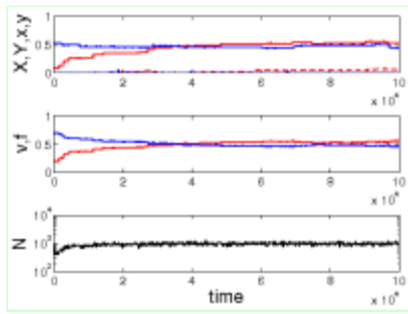
a=0.5.b=0.50.s=1.0.mu=0.00001.1.eps



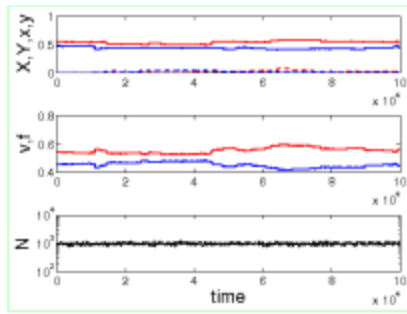
a=0.5.b=0.50.s=1.0.mu=0.00001.2.eps



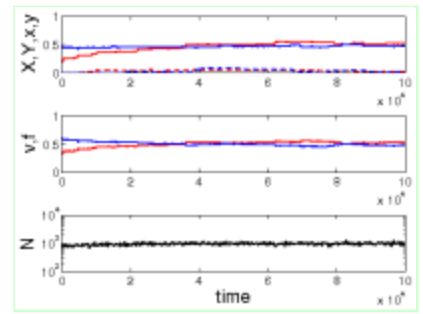
a=0.5.b=0.50.s=1.0.mu=0.00001.3.eps



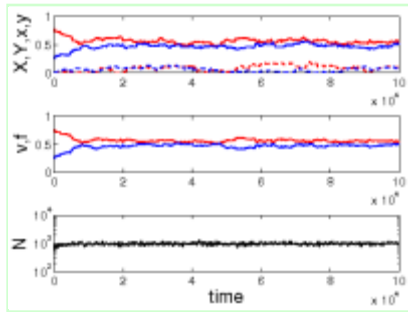
$a=0.5, b=0.5, s=1.0, \mu=0.00010.1.\text{eps}$



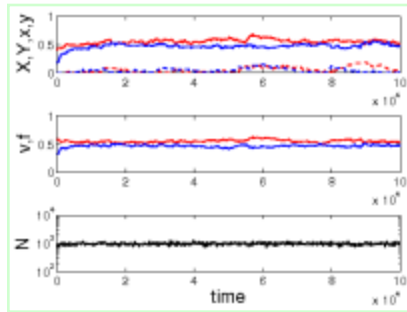
$a=0.5, b=0.5, s=1.0, \mu=0.00010.2.\text{eps}$



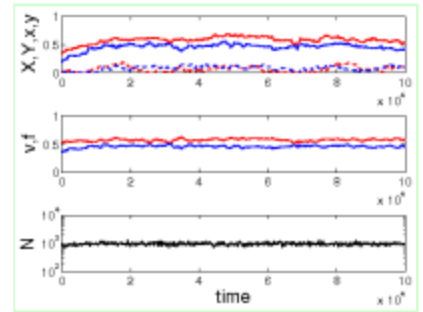
$a=0.5, b=0.5, s=1.0, \mu=0.00010.3.\text{eps}$



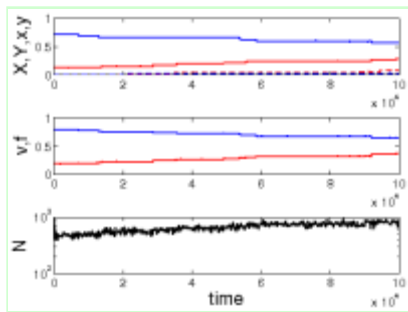
$a=0.5, b=0.5, s=1.0, \mu=0.00100.1.\text{eps}$



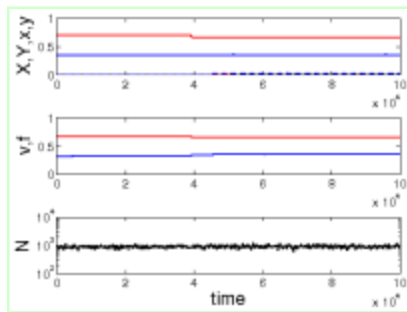
$a=0.5, b=0.5, s=1.0, \mu=0.00100.2.\text{eps}$



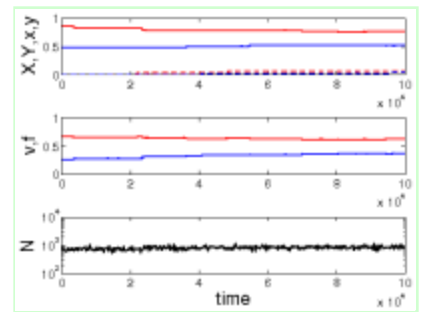
$a=0.5, b=0.5, s=1.0, \mu=0.00100.3.\text{eps}$



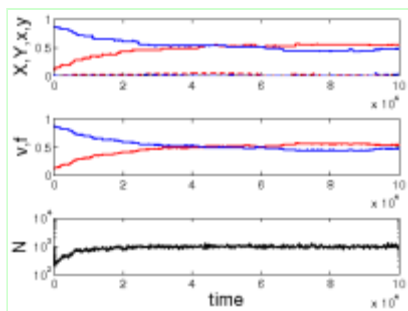
$a=0.5, b=0.5, s=2.0, \mu=0.00001.1.\text{eps}$



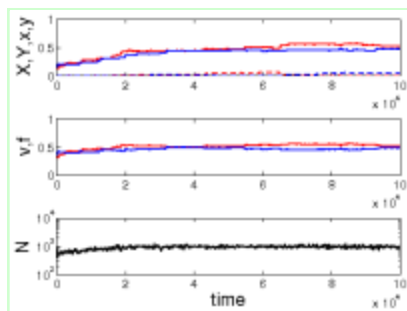
$a=0.5, b=0.5, s=2.0, \mu=0.00001.2.\text{eps}$



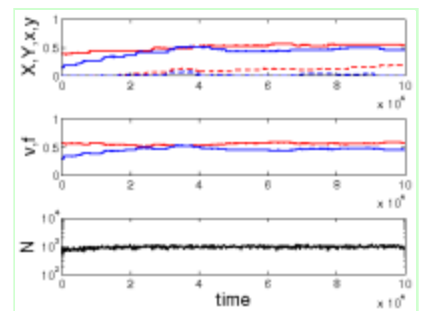
$a=0.5, b=0.5, s=2.0, \mu=0.00001.3.\text{eps}$



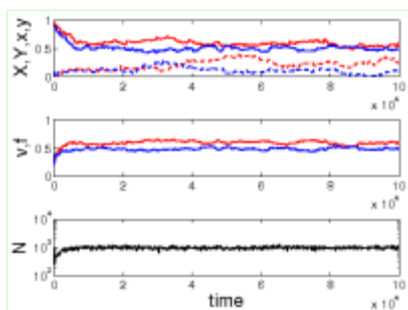
$a=0.5, b=0.5, s=2.0, \mu=0.00010.1.\text{eps}$



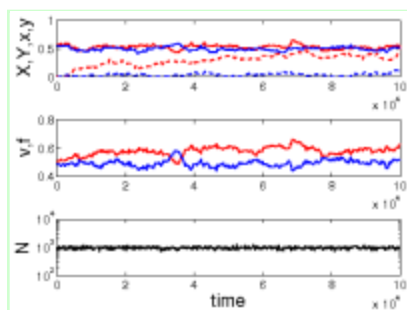
$a=0.5, b=0.5, s=2.0, \mu=0.00010.2.\text{eps}$



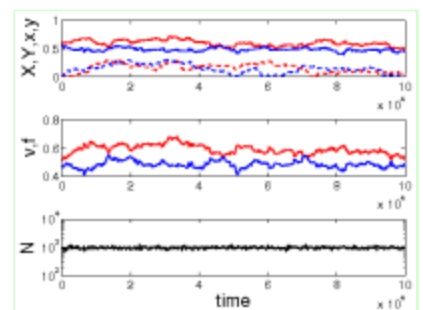
$a=0.5, b=0.5, s=2.0, \mu=0.00010.3.\text{eps}$



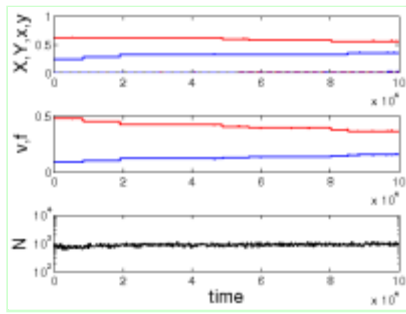
$a=0.5, b=0.5, s=2.0, \mu=0.00100.1.\text{eps}$



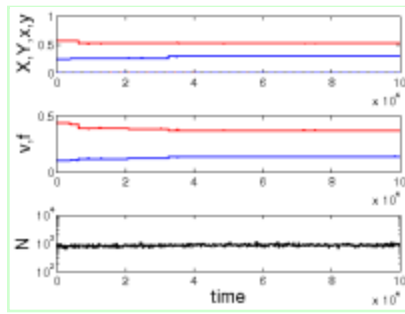
$a=0.5, b=0.5, s=2.0, \mu=0.00100.2.\text{eps}$



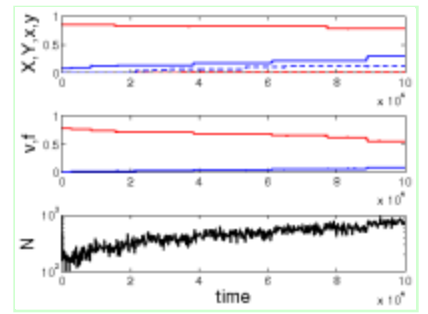
$a=0.5, b=0.5, s=2.0, \mu=0.00100.3.\text{eps}$



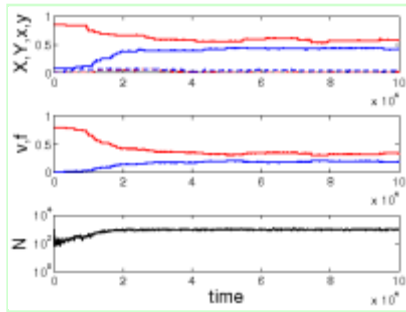
a=1.0.b=1.00.s=0.5.mu=0.00001.1.eps



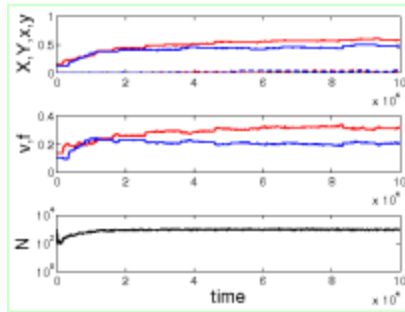
a=1.0.b=1.00.s=0.5.mu=0.00001.2.eps



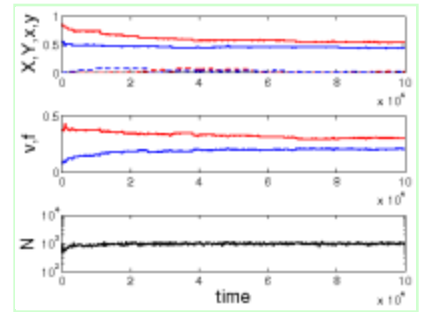
a=1.0.b=1.00.s=0.5.mu=0.00001.3.eps



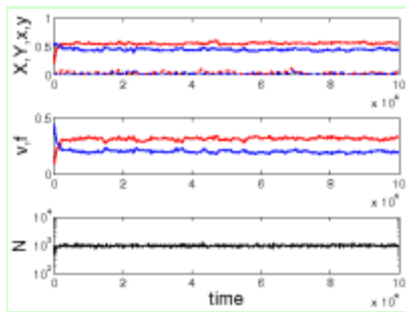
a=1.0.b=1.00.s=0.5.mu=0.00010.1.eps



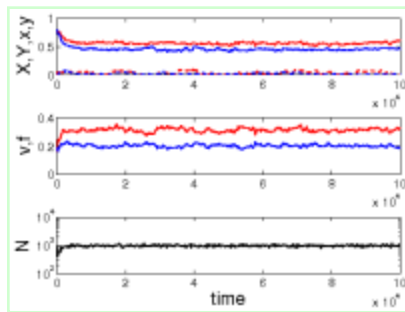
a=1.0.b=1.00.s=0.5.mu=0.00010.2.eps



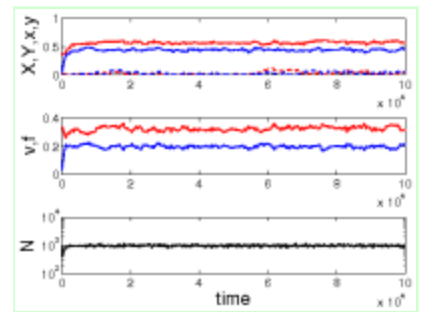
a=1.0.b=1.00.s=0.5.mu=0.00010.3.eps



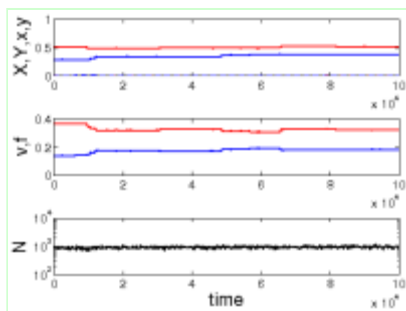
a=1.0.b=1.00.s=0.5.mu=0.00100.1.eps



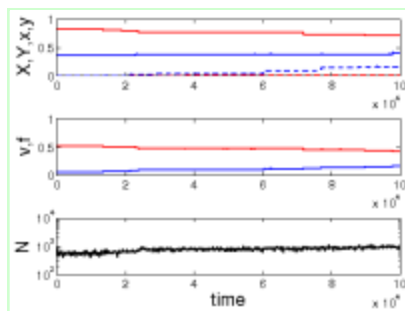
a=1.0.b=1.00.s=0.5.mu=0.00100.2.eps



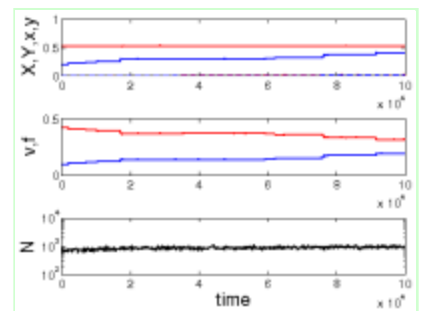
a=1.0.b=1.00.s=0.5.mu=0.00100.3.eps



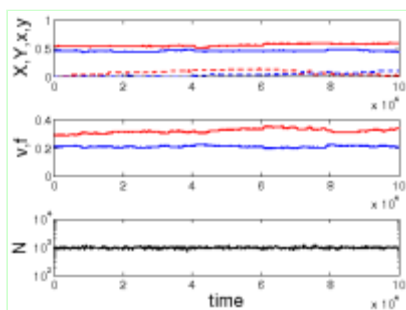
a=1.0.b=1.00.s=1.0.mu=0.00001.1.eps



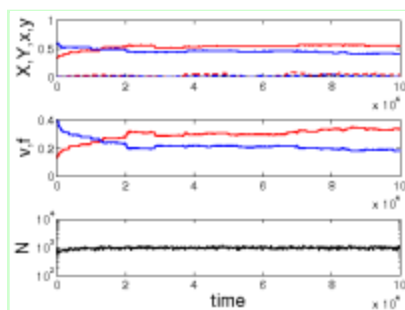
a=1.0.b=1.00.s=1.0.mu=0.00001.2.eps



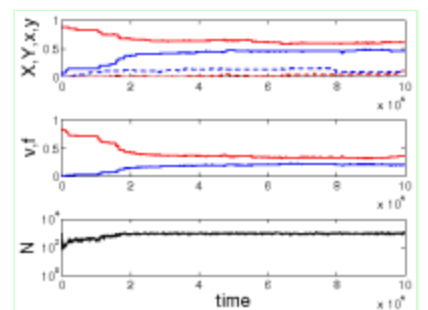
a=1.0.b=1.00.s=1.0.mu=0.00001.3.eps



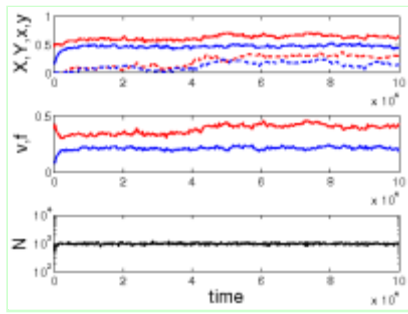
a=1.0.b=1.00.s=1.0.mu=0.00010.1.eps



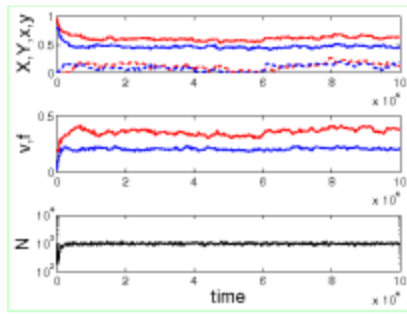
a=1.0.b=1.00.s=1.0.mu=0.00010.2.eps



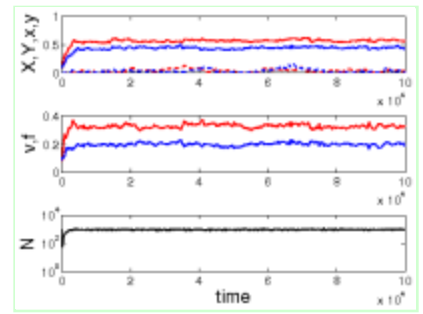
a=1.0.b=1.00.s=1.0.mu=0.00010.3.eps



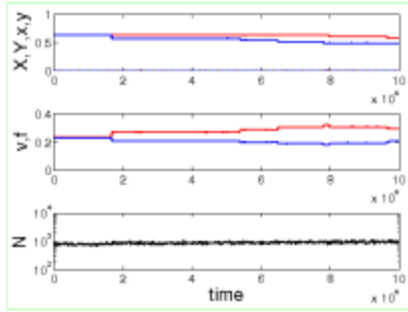
a=1.0.b=1.00.s=1.0.mu=0.00100.1.eps



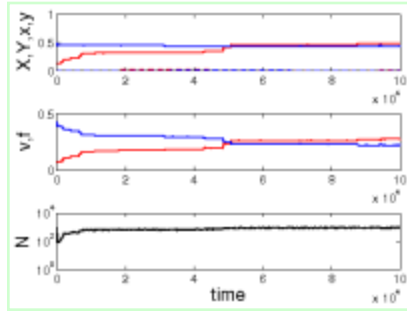
a=1.0.b=1.00.s=1.0.mu=0.00100.2.eps



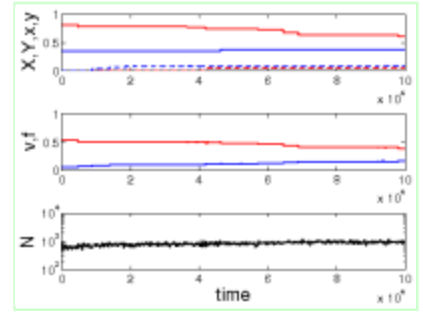
a=1.0.b=1.00.s=1.0.mu=0.00100.3.eps



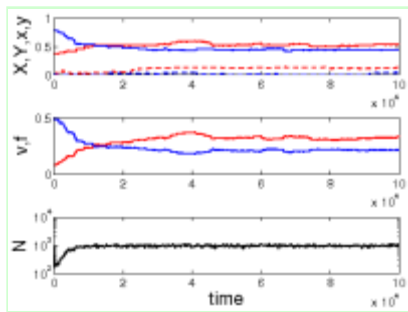
a=1.0.b=1.00.s=2.0.mu=0.00001.1.eps



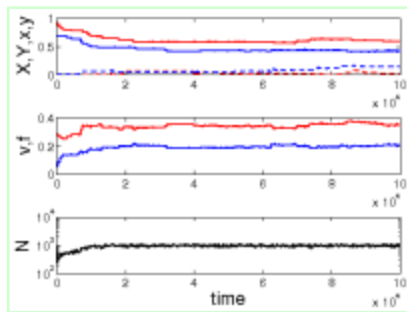
a=1.0.b=1.00.s=2.0.mu=0.00001.2.eps



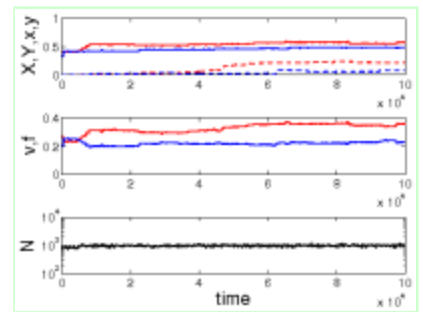
a=1.0.b=1.00.s=2.0.mu=0.00001.3.eps



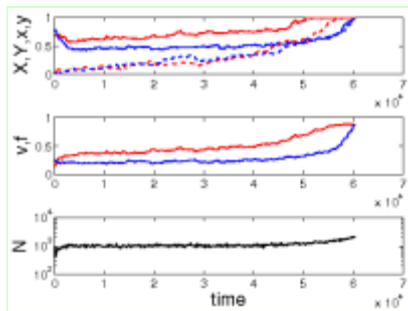
a=1.0.b=1.00.s=2.0.mu=0.00010.1.eps



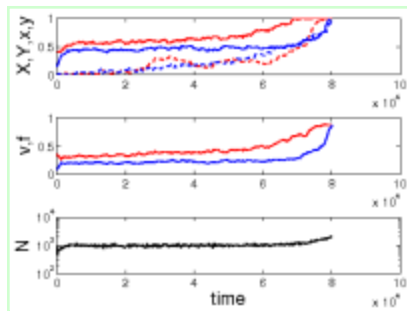
a=1.0.b=1.00.s=2.0.mu=0.00010.2.eps



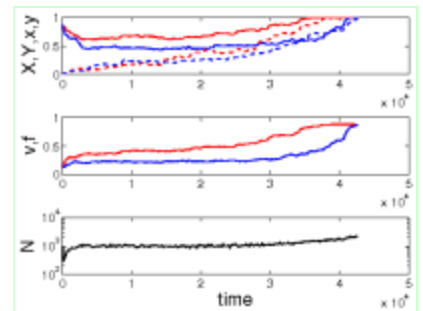
a=1.0.b=1.00.s=2.0.mu=0.00010.3.eps



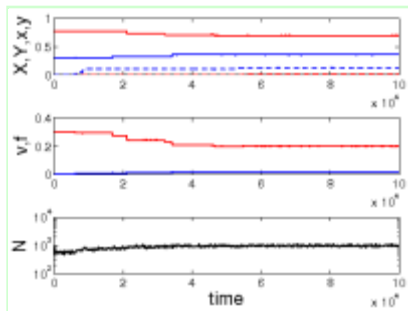
a=1.0.b=1.00.s=2.0.mu=0.00100.1.eps



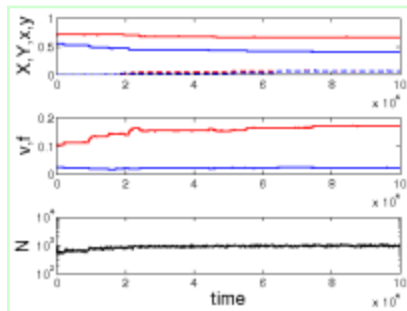
a=1.0.b=1.00.s=2.0.mu=0.00100.2.eps



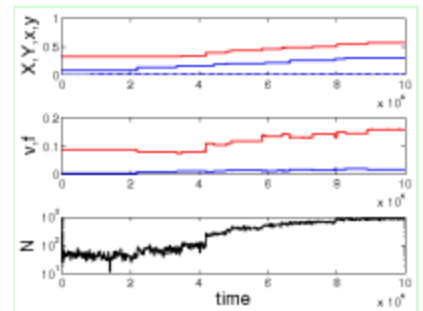
a=1.0.b=1.00.s=2.0.mu=0.00100.3.eps



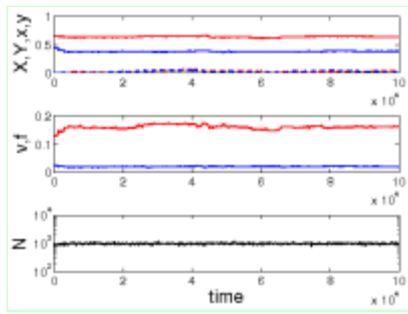
a=2.0.b=2.00.s=0.5.mu=0.00001.1.eps



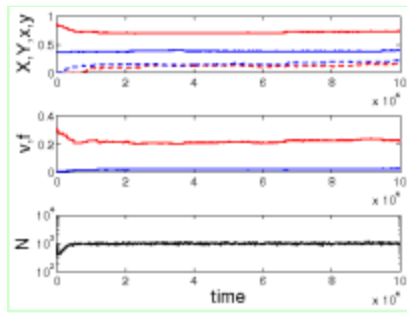
a=2.0.b=2.00.s=0.5.mu=0.00001.2.eps



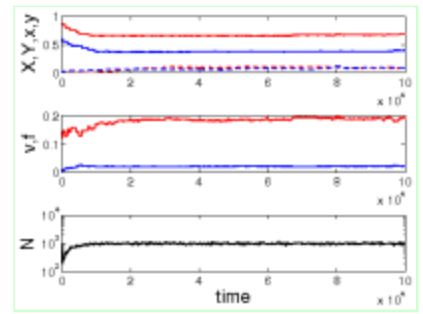
a=2.0.b=2.00.s=0.5.mu=0.00001.3.eps



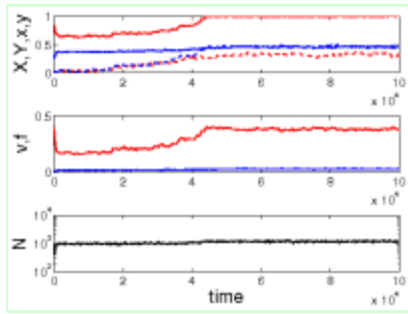
a=2.0.b=2.00.s=0.5.mu=0.00010.1.eps



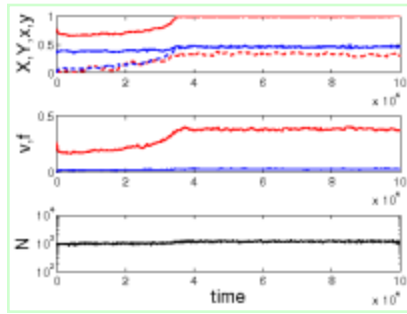
a=2.0.b=2.00.s=0.5.mu=0.00010.2.eps



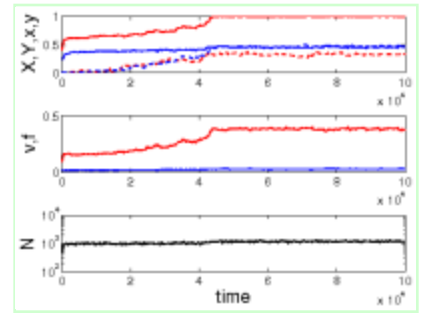
a=2.0.b=2.00.s=0.5.mu=0.00010.3.eps



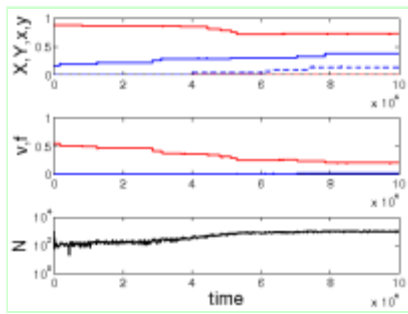
a=2.0.b=2.00.s=0.5.mu=0.00100.1.eps



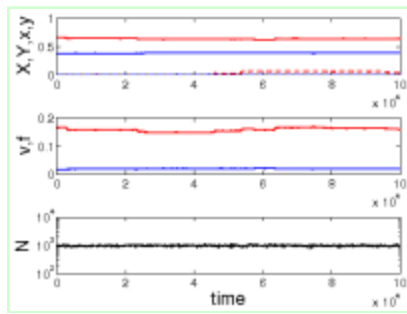
a=2.0.b=2.00.s=0.5.mu=0.00100.2.eps



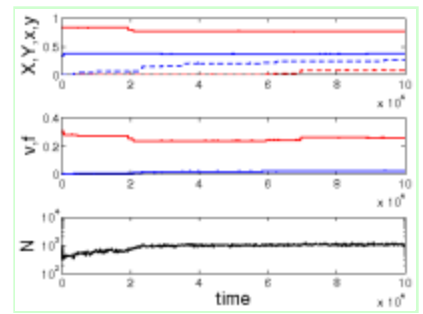
a=2.0.b=2.00.s=0.5.mu=0.00100.3.eps



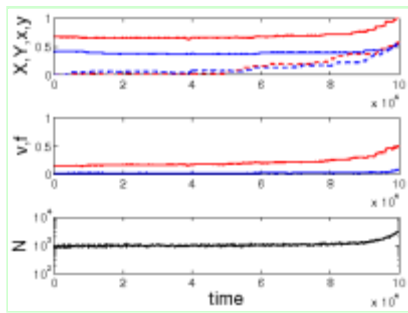
a=2.0.b=2.00.s=1.0.mu=0.00001.1.eps



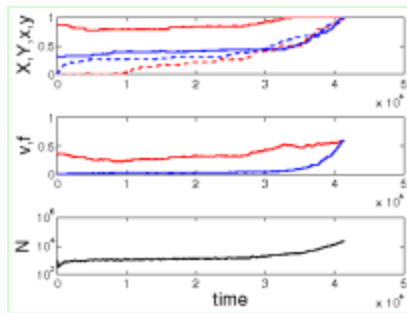
a=2.0.b=2.00.s=1.0.mu=0.00001.2.eps



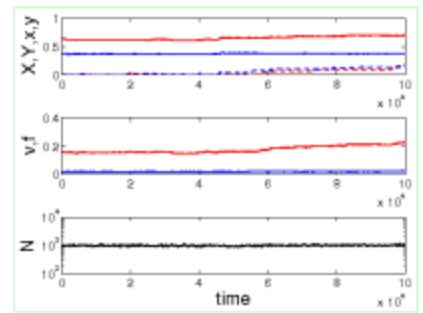
a=2.0.b=2.00.s=1.0.mu=0.00001.3.eps



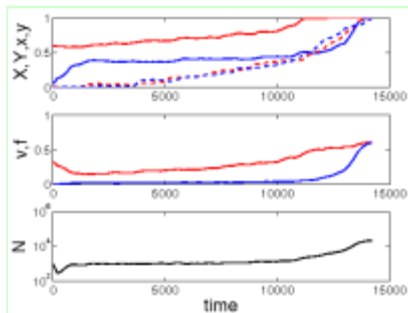
a=2.0.b=2.00.s=1.0.mu=0.00010.1.eps



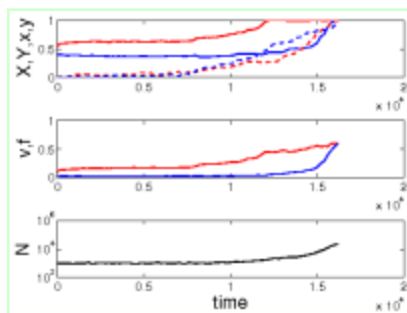
a=2.0.b=2.00.s=1.0.mu=0.00010.2.eps



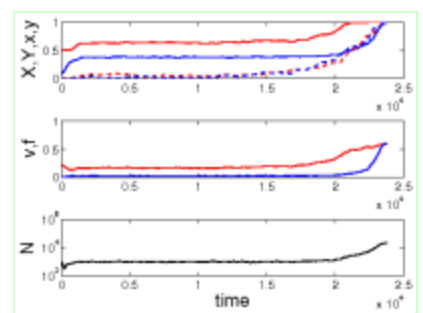
a=2.0.b=2.00.s=1.0.mu=0.00010.3.eps



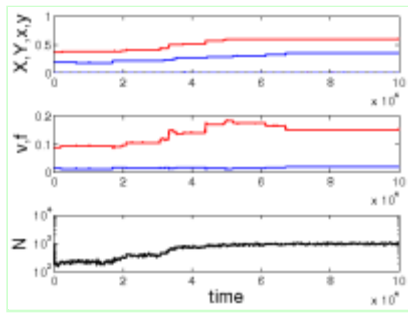
a=2.0.b=2.00.s=1.0.mu=0.00100.1.eps



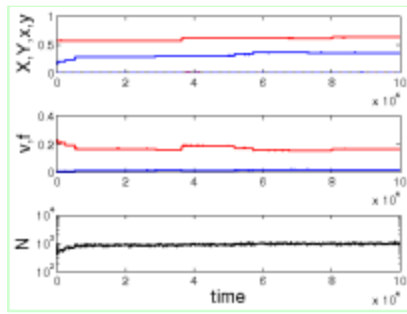
a=2.0.b=2.00.s=1.0.mu=0.00100.2.eps



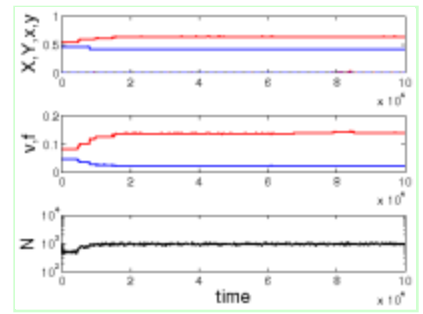
a=2.0.b=2.00.s=1.0.mu=0.00100.3.eps



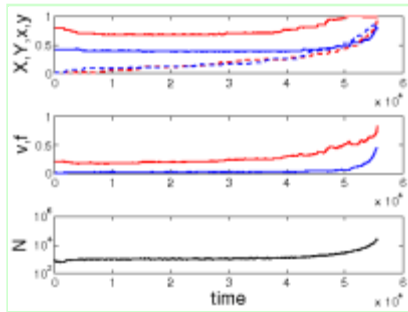
$a=2.0, b=2.00, s=2.0, \mu=0.00001.1.\text{eps}$



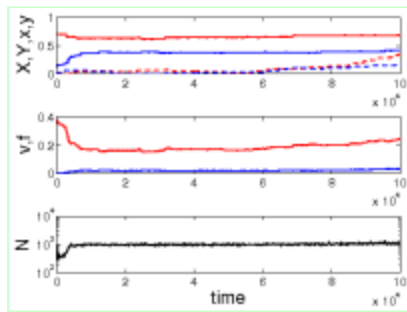
$a=2.0, b=2.00, s=2.0, \mu=0.00001.2.\text{eps}$



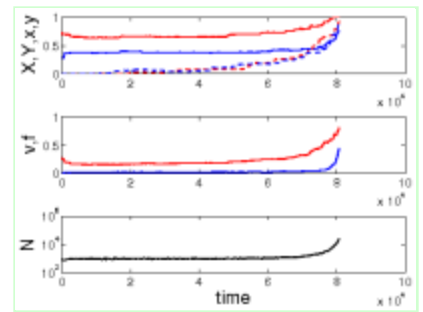
$a=2.0, b=2.00, s=2.0, \mu=0.00001.3.\text{eps}$



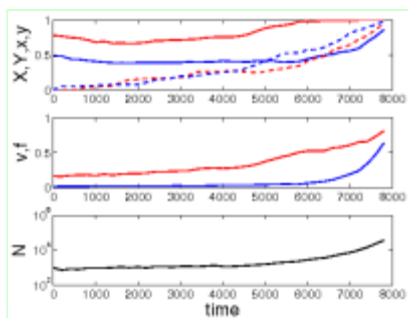
$a=2.0, b=2.00, s=2.0, \mu=0.00010.1.\text{eps}$



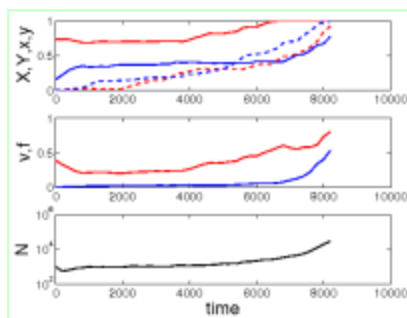
$a=2.0, b=2.00, s=2.0, \mu=0.00010.2.\text{eps}$



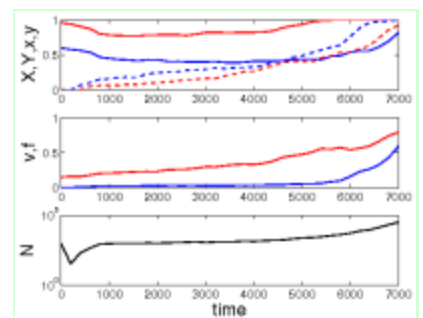
$a=2.0, b=2.00, s=2.0, \mu=0.00010.3.\text{eps}$



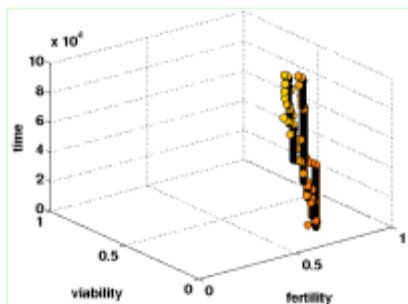
$a=2.0, b=2.00, s=2.0, \mu=0.00100.1.\text{eps}$



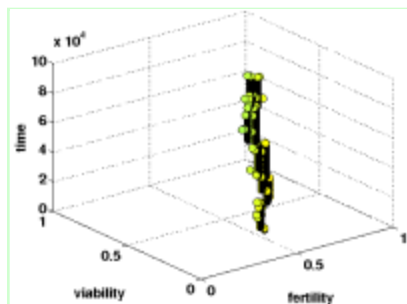
$a=2.0, b=2.00, s=2.0, \mu=0.00100.2.\text{eps}$



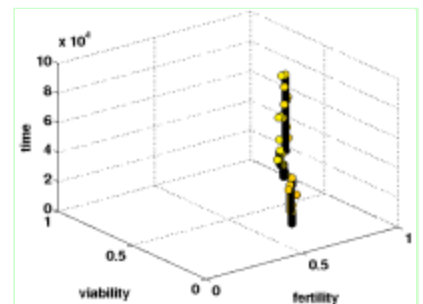
$a=2.0, b=2.00, s=2.0, \mu=0.00100.3.\text{eps}$



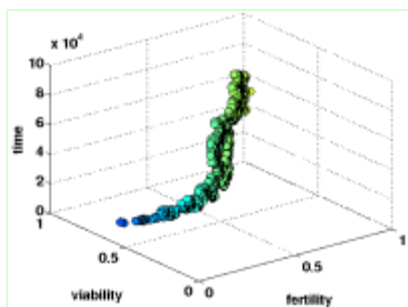
$Q.a=0.5, b=0.50, s=0.5, \mu=0.00001.1.\text{eps}$



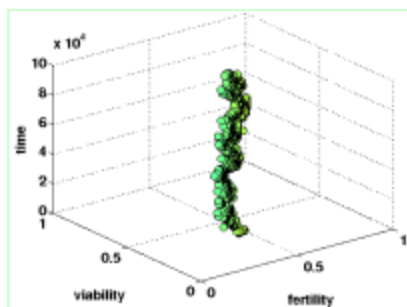
$Q.a=0.5, b=0.50, s=0.5, \mu=0.00001.2.\text{eps}$



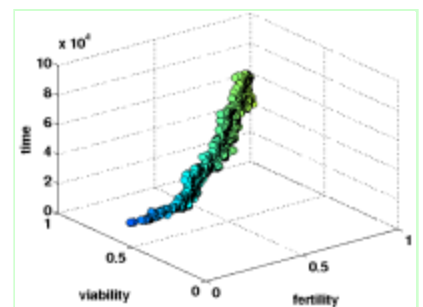
$Q.a=0.5, b=0.50, s=0.5, \mu=0.00001.3.\text{eps}$



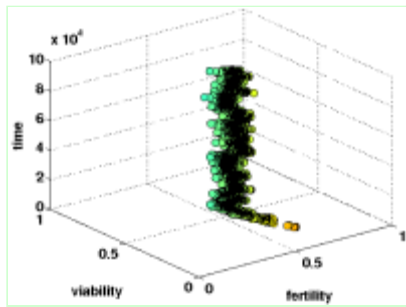
$Q.a=0.5, b=0.50, s=0.5, \mu=0.00010.1.\text{eps}$



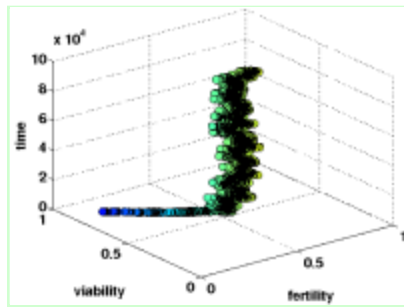
$Q.a=0.5, b=0.50, s=0.5, \mu=0.00010.2.\text{eps}$



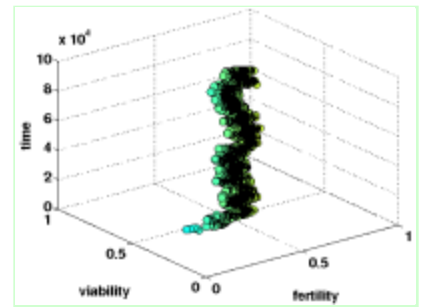
$Q.a=0.5, b=0.50, s=0.5, \mu=0.00010.3.\text{eps}$



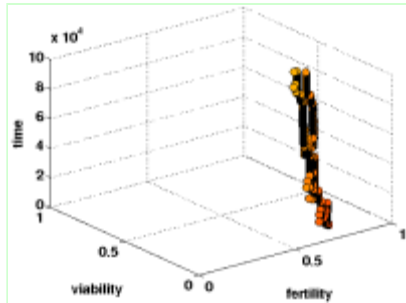
Q.a=0.5.b=0.50.s=0.5.mu=0.00100.1.eps



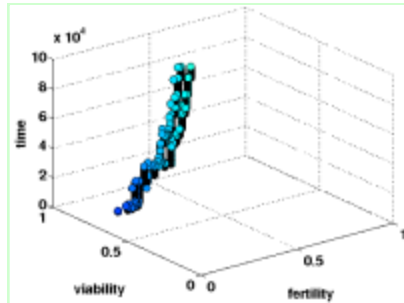
Q.a=0.5.b=0.50.s=0.5.mu=0.00100.2.eps



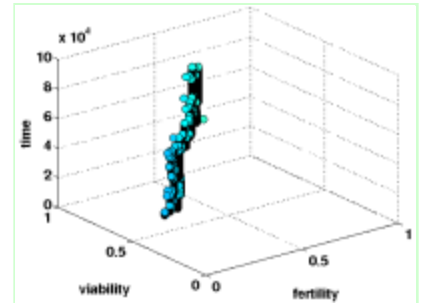
Q.a=0.5.b=0.50.s=0.5.mu=0.00100.3.eps



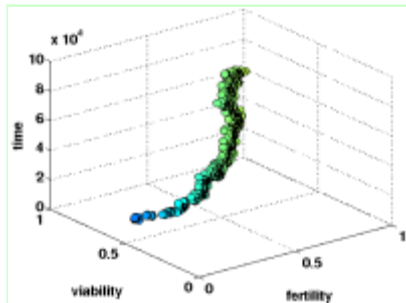
Q.a=0.5.b=0.50.s=1.0.mu=0.00001.1.eps



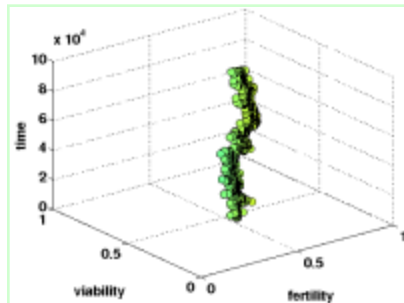
Q.a=0.5.b=0.50.s=1.0.mu=0.00001.2.eps



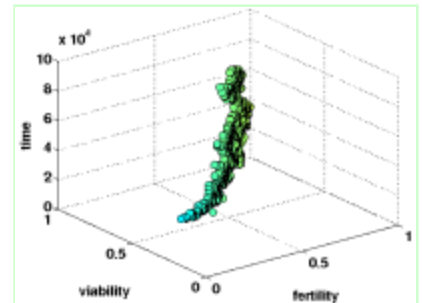
Q.a=0.5.b=0.50.s=1.0.mu=0.00001.3.eps



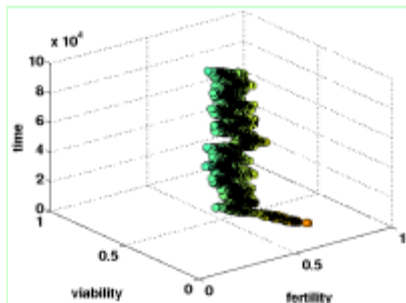
Q.a=0.5.b=0.50.s=1.0.mu=0.00010.1.eps



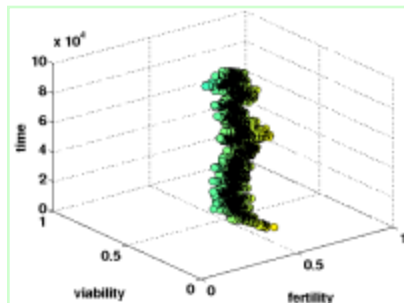
Q.a=0.5.b=0.50.s=1.0.mu=0.00010.2.eps



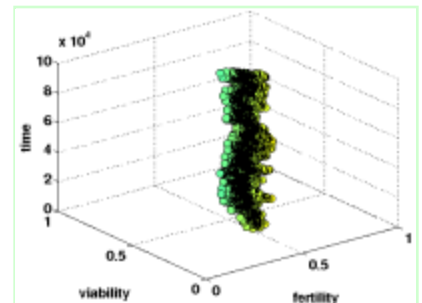
Q.a=0.5.b=0.50.s=1.0.mu=0.00010.3.eps



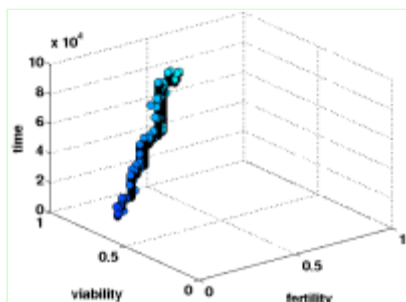
Q.a=0.5.b=0.50.s=1.0.mu=0.00100.1.eps



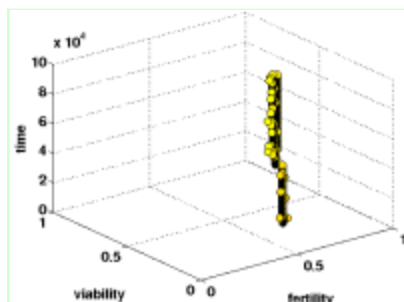
Q.a=0.5.b=0.50.s=1.0.mu=0.00100.2.eps



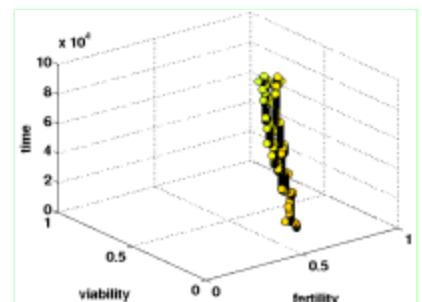
Q.a=0.5.b=0.50.s=1.0.mu=0.00100.3.eps



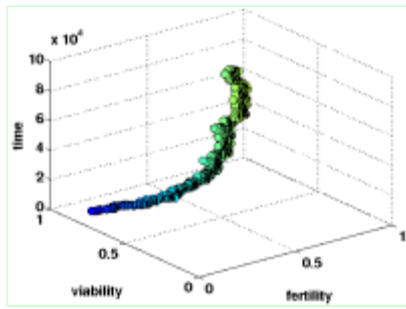
Q.a=0.5.b=0.50.s=2.0.mu=0.00001.1.eps



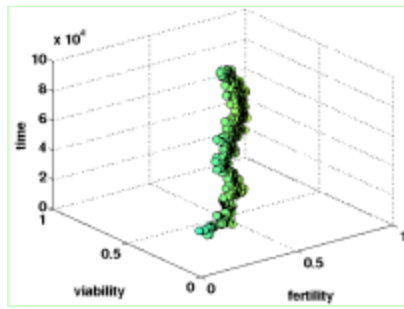
Q.a=0.5.b=0.50.s=2.0.mu=0.00001.2.eps



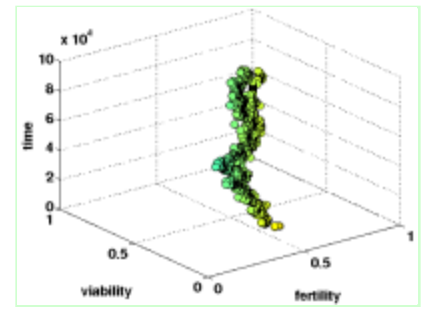
Q.a=0.5.b=0.50.s=2.0.mu=0.00001.3.eps



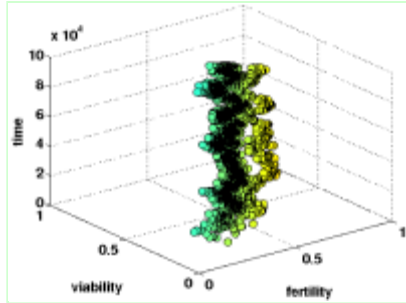
Q.a=0.5.b=0.50.s=2.0.mu=0.00010.1.eps



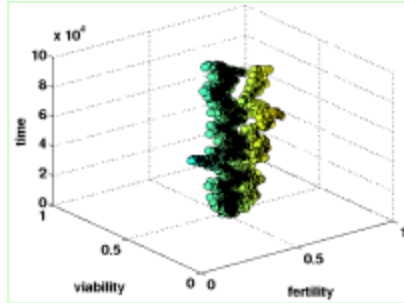
Q.a=0.5.b=0.50.s=2.0.mu=0.00010.2.eps



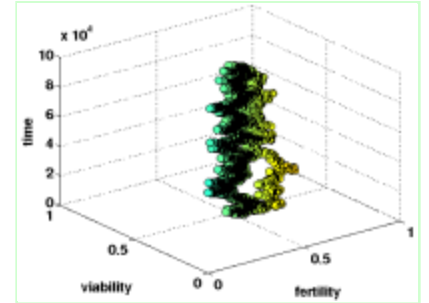
Q.a=0.5.b=0.50.s=2.0.mu=0.00010.3.eps



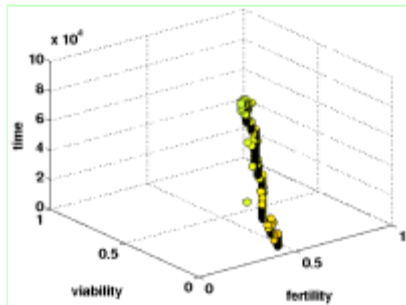
Q.a=0.5.b=0.50.s=2.0.mu=0.00100.1.eps



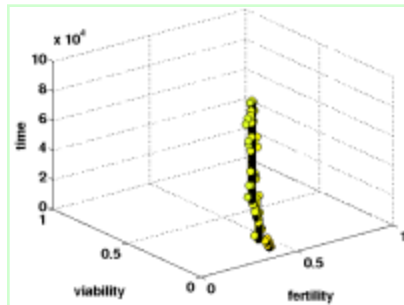
Q.a=0.5.b=0.50.s=2.0.mu=0.00100.2.eps



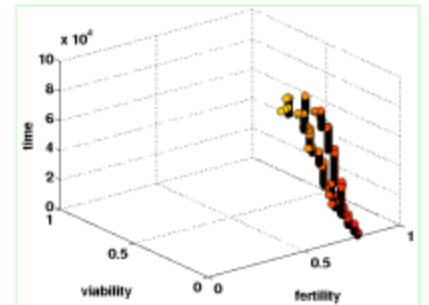
Q.a=0.5.b=0.50.s=2.0.mu=0.00100.3.eps



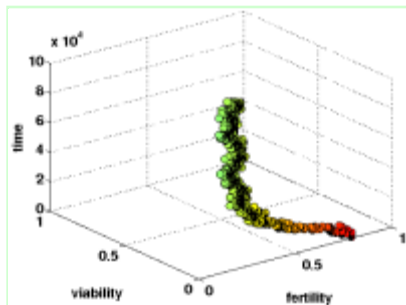
Q.a=1.0.b=1.00.s=0.5.mu=0.00001.1.eps



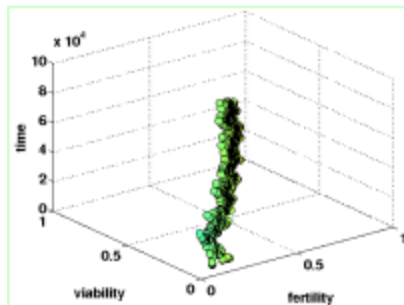
Q.a=1.0.b=1.00.s=0.5.mu=0.00001.2.eps



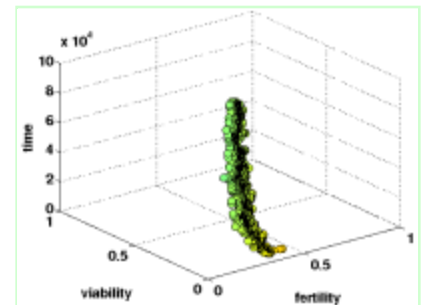
Q.a=1.0.b=1.00.s=0.5.mu=0.00001.3.eps



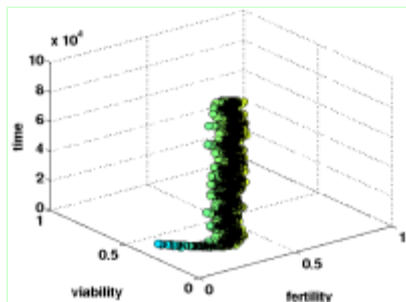
Q.a=1.0.b=1.00.s=0.5.mu=0.00010.1.eps



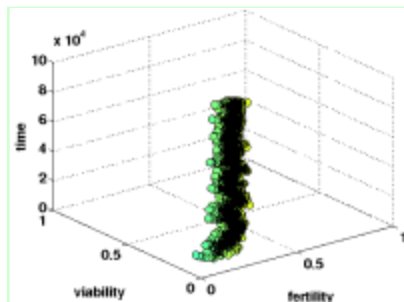
Q.a=1.0.b=1.00.s=0.5.mu=0.00010.2.eps



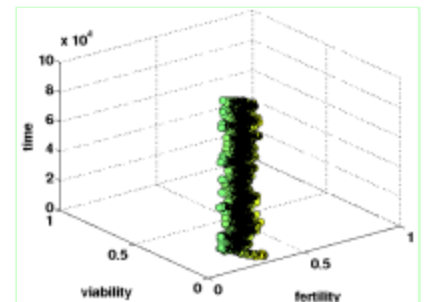
Q.a=1.0.b=1.00.s=0.5.mu=0.00010.3.eps



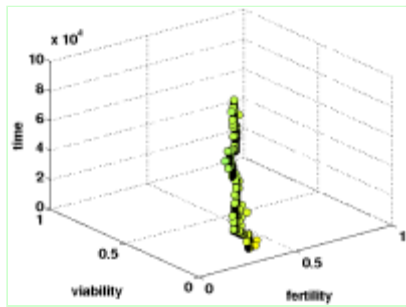
Q.a=1.0.b=1.00.s=0.5.mu=0.00100.1.eps



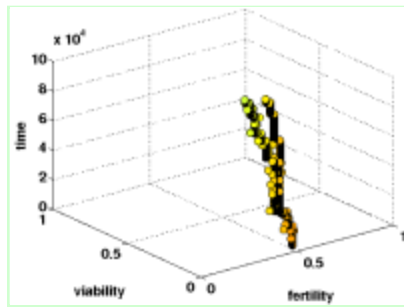
Q.a=1.0.b=1.00.s=0.5.mu=0.00100.2.eps



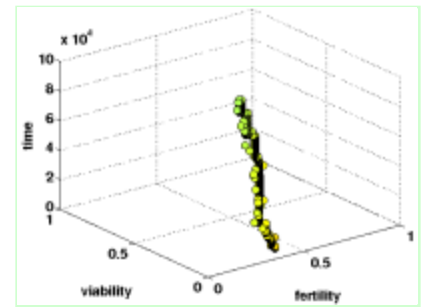
Q.a=1.0.b=1.00.s=0.5.mu=0.00100.3.eps



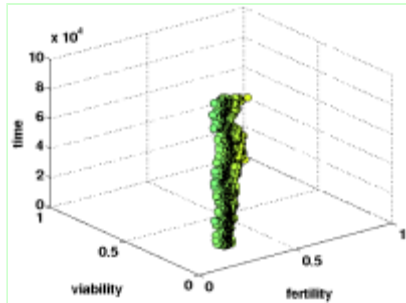
Q.a=1.0.b=1.00.s=1.0.mu=0.00001.1.eps



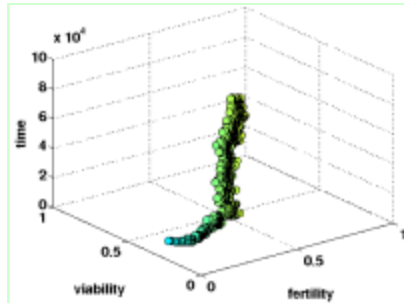
Q.a=1.0.b=1.00.s=1.0.mu=0.00001.2.eps



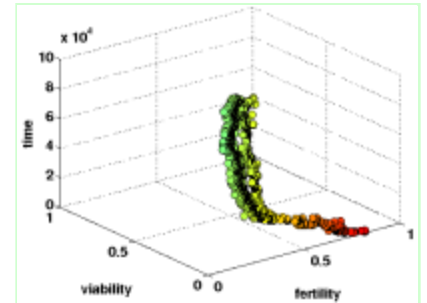
Q.a=1.0.b=1.00.s=1.0.mu=0.00001.3.eps



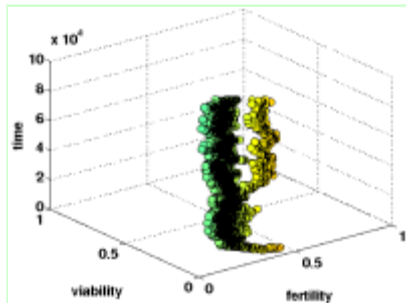
Q.a=1.0.b=1.00.s=1.0.mu=0.00010.1.eps



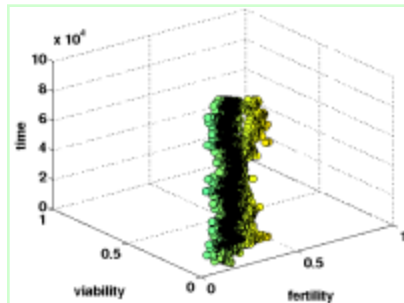
Q.a=1.0.b=1.00.s=1.0.mu=0.00010.2.eps



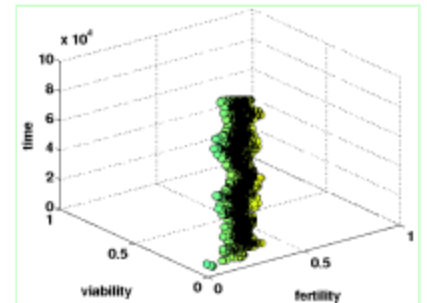
Q.a=1.0.b=1.00.s=1.0.mu=0.00010.3.eps



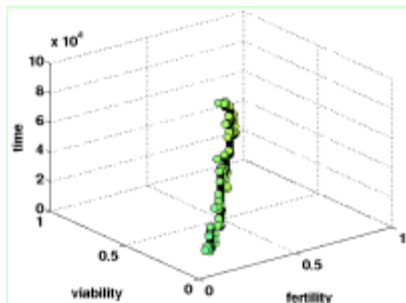
Q.a=1.0.b=1.00.s=1.0.mu=0.00100.1.eps



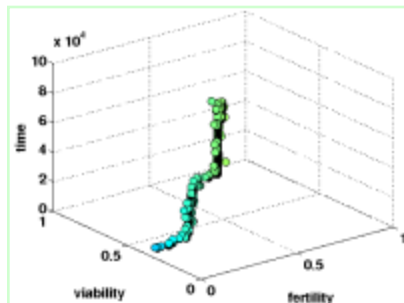
Q.a=1.0.b=1.00.s=1.0.mu=0.00100.2.eps



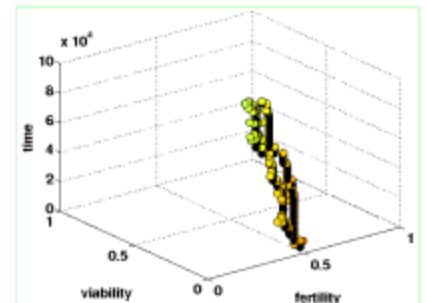
Q.a=1.0.b=1.00.s=1.0.mu=0.00100.3.eps



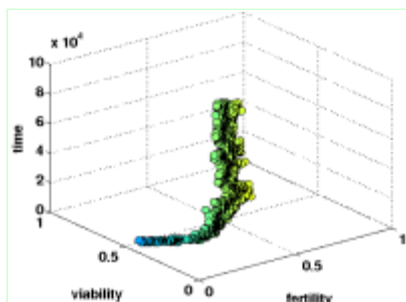
Q.a=1.0.b=1.00.s=2.0.mu=0.00001.1.eps



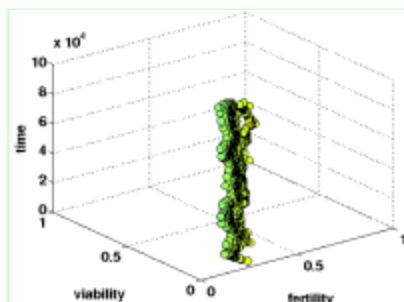
Q.a=1.0.b=1.00.s=2.0.mu=0.00001.2.eps



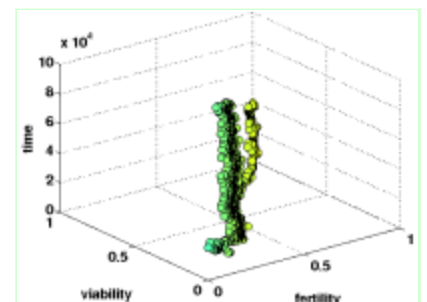
Q.a=1.0.b=1.00.s=2.0.mu=0.00001.3.eps



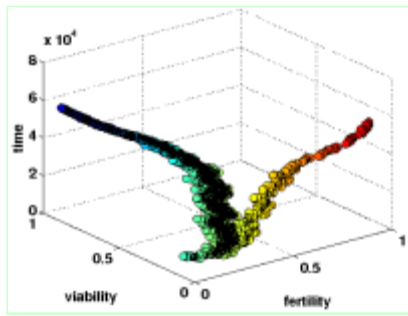
Q.a=1.0.b=1.00.s=2.0.mu=0.00010.1.eps



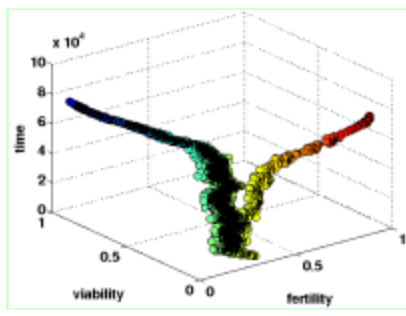
Q.a=1.0.b=1.00.s=2.0.mu=0.00010.2.eps



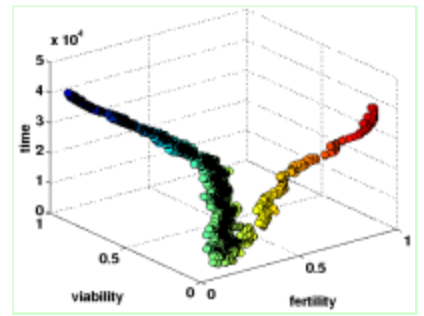
Q.a=1.0.b=1.00.s=2.0.mu=0.00010.3.eps



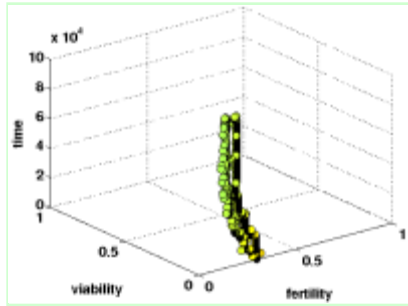
Q.a=1.0.b=1.00.s=2.0.mu=0.00100.1.eps



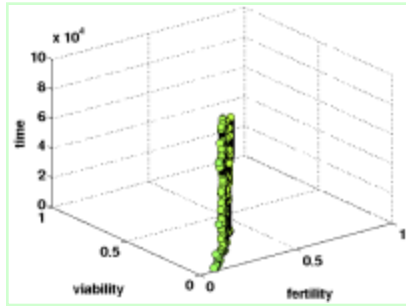
Q.a=1.0.b=1.00.s=2.0.mu=0.00100.2.eps



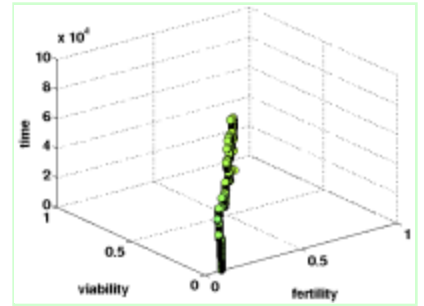
Q.a=1.0.b=1.00.s=2.0.mu=0.00100.3.eps



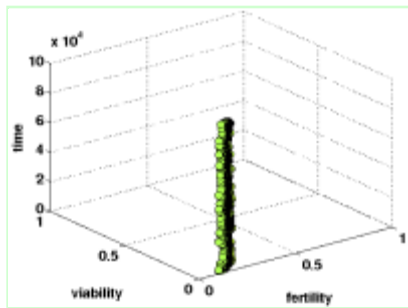
Q.a=2.0.b=2.00.s=0.5.mu=0.00001.1.eps



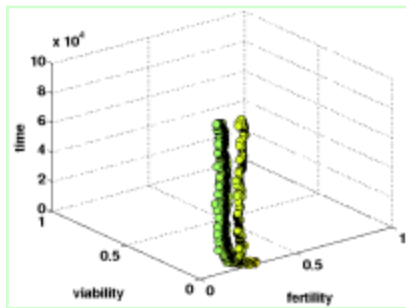
Q.a=2.0.b=2.00.s=0.5.mu=0.00001.2.eps



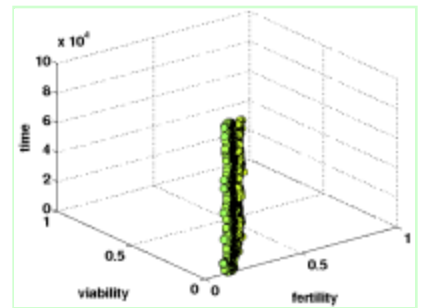
Q.a=2.0.b=2.00.s=0.5.mu=0.00001.3.eps



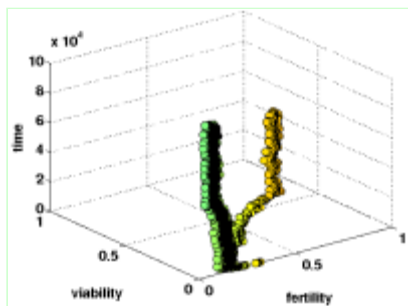
Q.a=2.0.b=2.00.s=0.5.mu=0.00010.1.eps



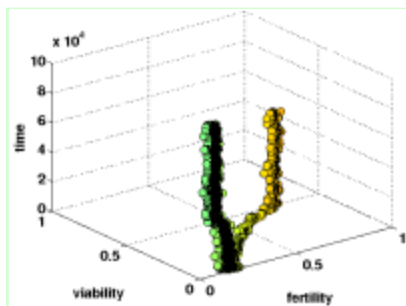
Q.a=2.0.b=2.00.s=0.5.mu=0.00010.2.eps



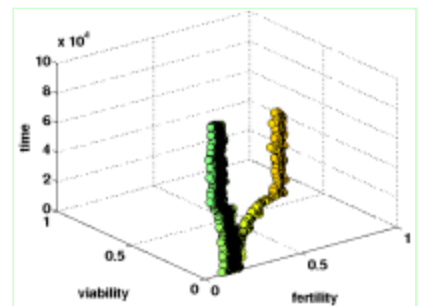
Q.a=2.0.b=2.00.s=0.5.mu=0.00010.3.eps



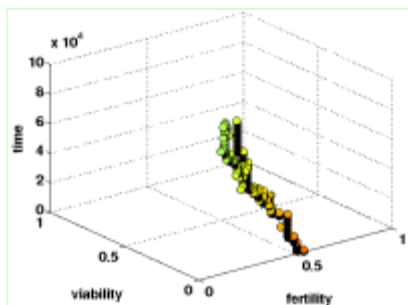
Q.a=2.0.b=2.00.s=0.5.mu=0.00100.1.eps



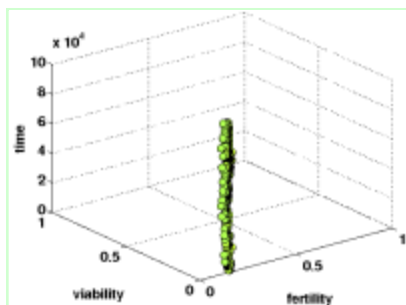
Q.a=2.0.b=2.00.s=0.5.mu=0.00100.2.eps



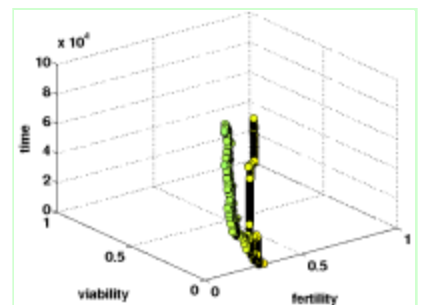
Q.a=2.0.b=2.00.s=0.5.mu=0.00100.3.eps



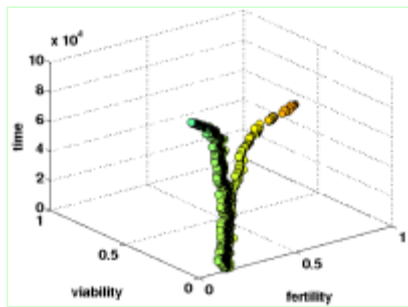
Q.a=2.0.b=2.00.s=1.0.mu=0.00001.1.eps



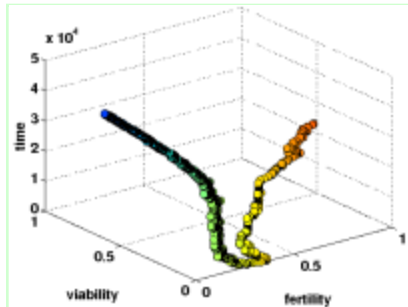
Q.a=2.0.b=2.00.s=1.0.mu=0.00001.2.eps



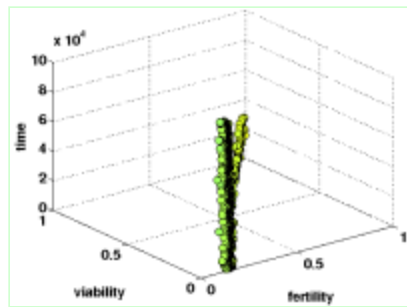
Q.a=2.0.b=2.00.s=1.0.mu=0.00001.3.eps



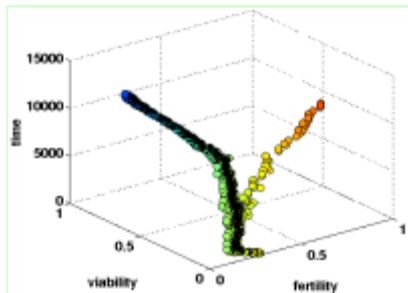
Q.a=2.0.b=2.00.s=1.0.mu=0.00010.1.eps



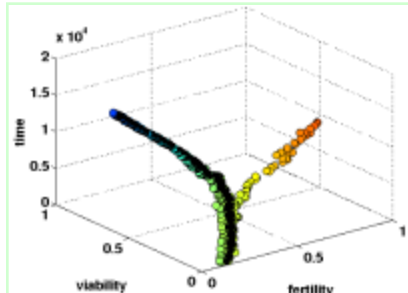
Q.a=2.0.b=2.00.s=1.0.mu=0.00010.2.eps



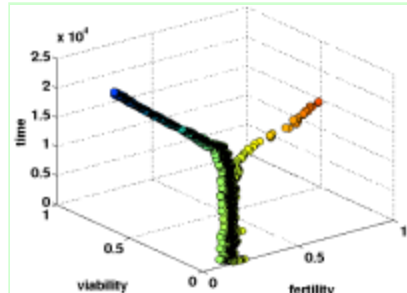
Q.a=2.0.b=2.00.s=1.0.mu=0.00010.3.eps



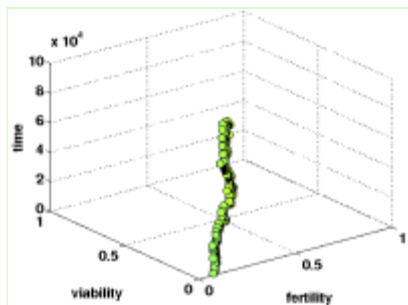
Q.a=2.0.b=2.00.s=1.0.mu=0.00100.1.eps



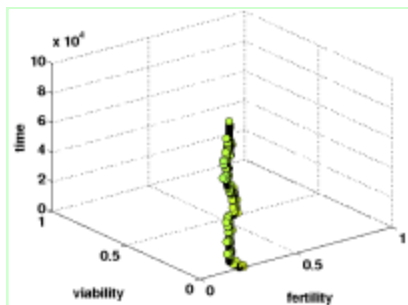
Q.a=2.0.b=2.00.s=1.0.mu=0.00100.2.eps



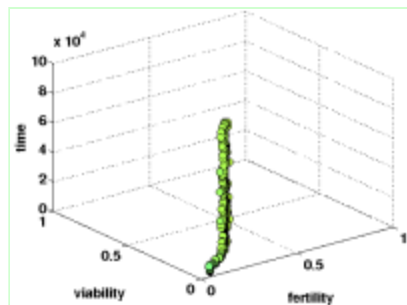
Q.a=2.0.b=2.00.s=1.0.mu=0.00100.3.eps



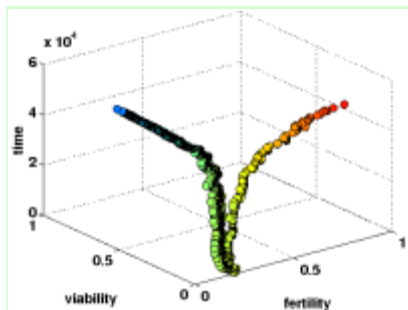
Q.a=2.0.b=2.00.s=2.0.mu=0.00001.1.eps



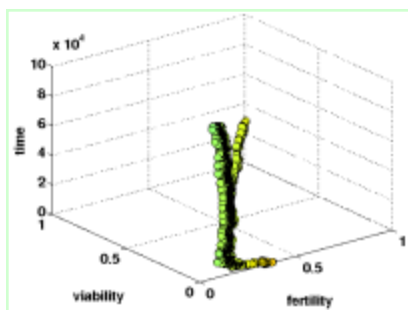
Q.a=2.0.b=2.00.s=2.0.mu=0.00001.2.eps



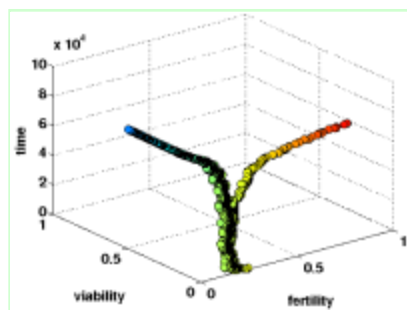
Q.a=2.0.b=2.00.s=2.0.mu=0.00001.3.eps



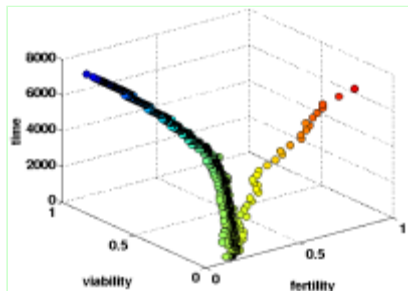
Q.a=2.0.b=2.00.s=2.0.mu=0.00010.1.eps



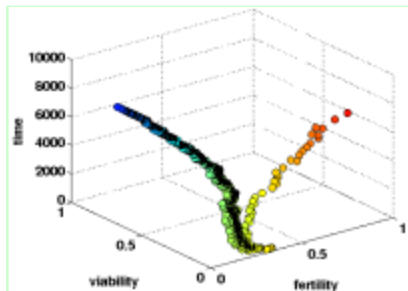
Q.a=2.0.b=2.00.s=2.0.mu=0.00010.2.eps



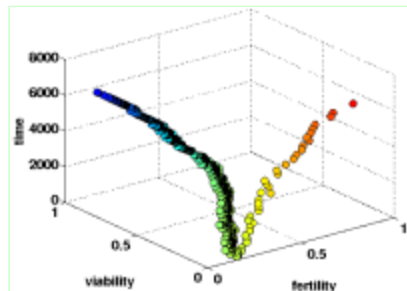
Q.a=2.0.b=2.00.s=2.0.mu=0.00010.3.eps



Q.a=2.0.b=2.00.s=2.0.mu=0.00100.1.eps



Q.a=2.0.b=2.00.s=2.0.mu=0.00100.2.eps



Q.a=2.0.b=2.00.s=2.0.mu=0.00100.3.eps