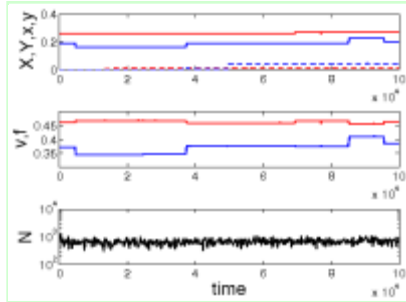


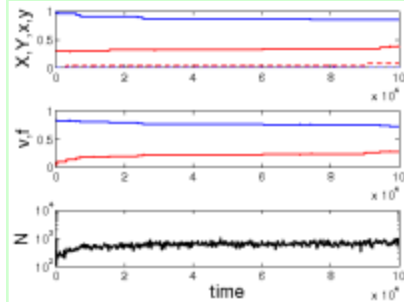
S=64.p=0.75

Number of images: 162

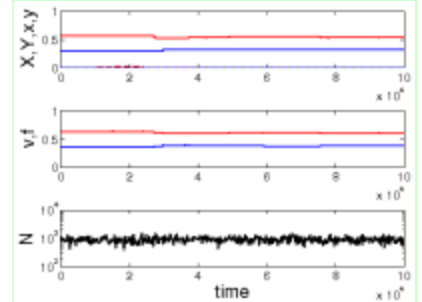
Created on: Monday 29 March 2010



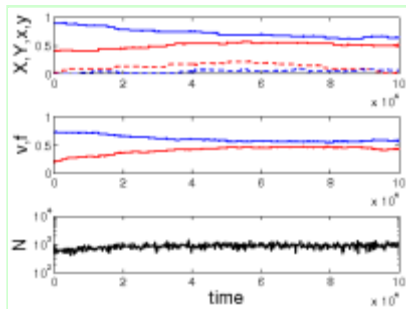
a=0.5.b=0.50.s=0.5.mu=0.00001.1.eps



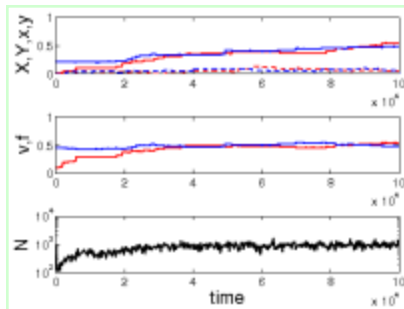
a=0.5.b=0.50.s=0.5.mu=0.00001.2.eps



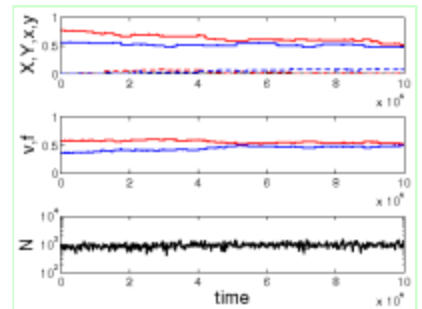
a=0.5.b=0.50.s=0.5.mu=0.00001.3.eps



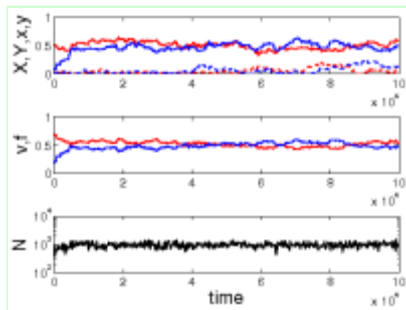
a=0.5.b=0.50.s=0.5.mu=0.00010.1.eps



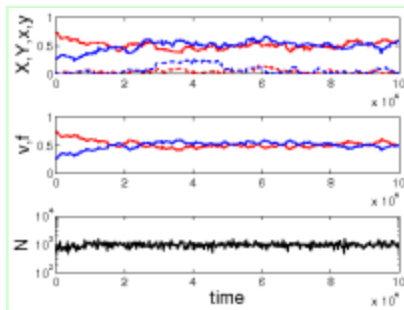
a=0.5.b=0.50.s=0.5.mu=0.00010.2.eps



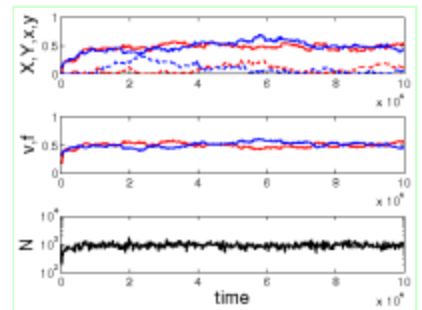
a=0.5.b=0.50.s=0.5.mu=0.00010.3.eps



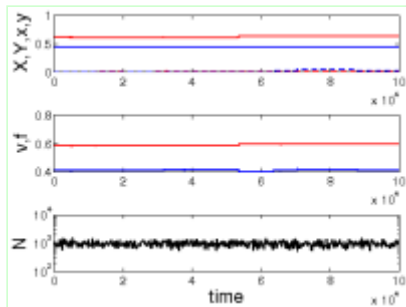
a=0.5.b=0.50.s=0.5.mu=0.00100.1.eps



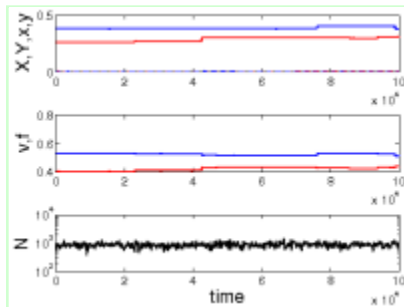
a=0.5.b=0.50.s=0.5.mu=0.00100.2.eps



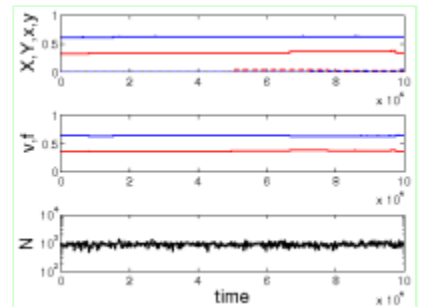
a=0.5.b=0.50.s=0.5.mu=0.00100.3.eps



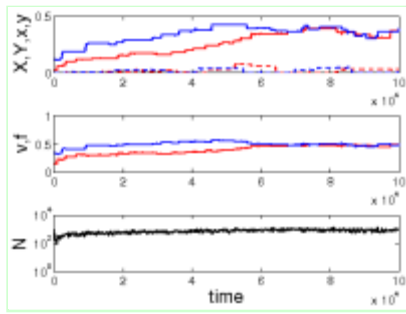
a=0.5.b=0.50.s=1.0.mu=0.00001.1.eps



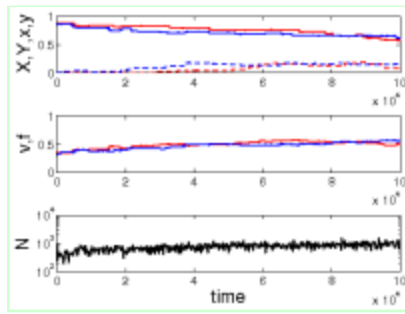
a=0.5.b=0.50.s=1.0.mu=0.00001.2.eps



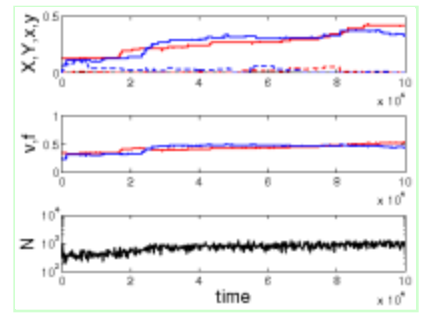
a=0.5.b=0.50.s=1.0.mu=0.00001.3.eps



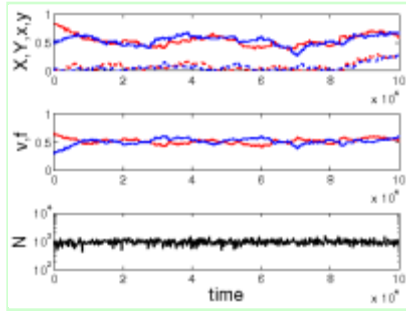
a=0.5.b=0.50.s=1.0.mu=0.00010.1.eps



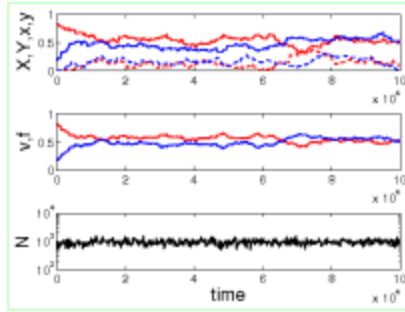
a=0.5.b=0.50.s=1.0.mu=0.00010.2.eps



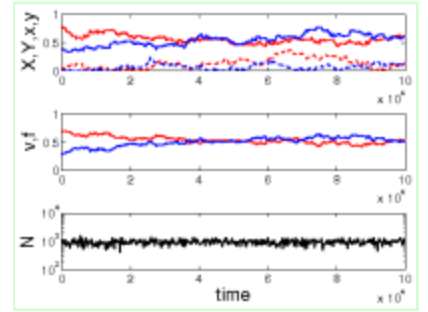
a=0.5.b=0.50.s=1.0.mu=0.00010.3.eps



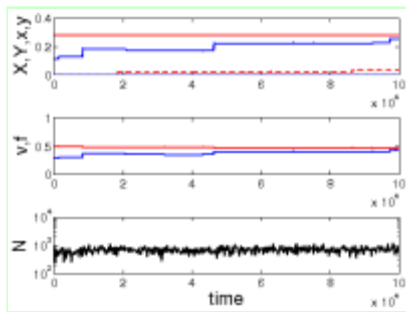
a=0.5.b=0.50.s=1.0.mu=0.00100.1.eps



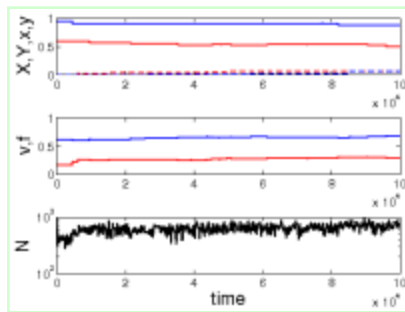
a=0.5.b=0.50.s=1.0.mu=0.00100.2.eps



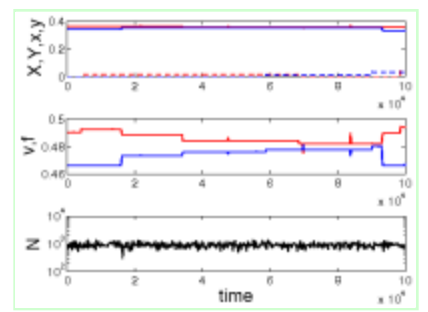
a=0.5.b=0.50.s=1.0.mu=0.00100.3.eps



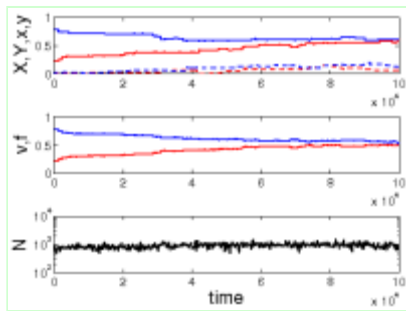
a=0.5.b=0.50.s=2.0.mu=0.00001.1.eps



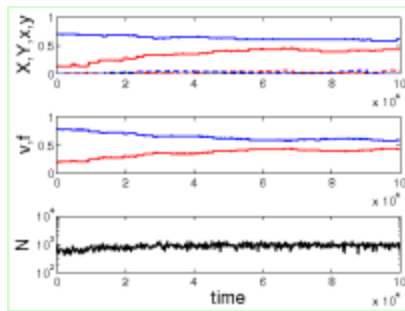
a=0.5.b=0.50.s=2.0.mu=0.00001.2.eps



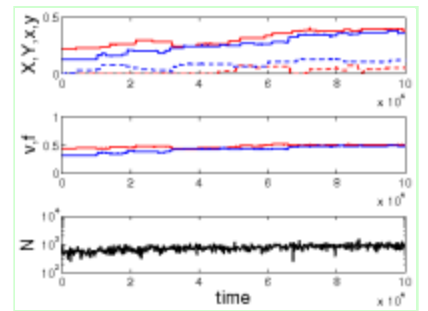
a=0.5.b=0.50.s=2.0.mu=0.00001.3.eps



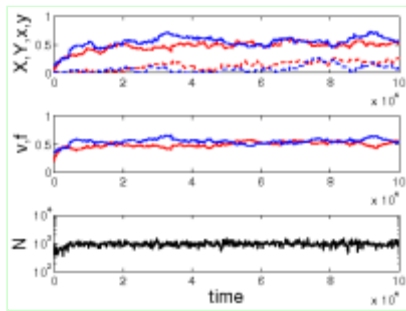
a=0.5.b=0.50.s=2.0.mu=0.00010.1.eps



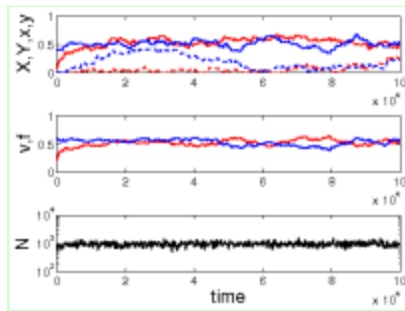
a=0.5.b=0.50.s=2.0.mu=0.00010.2.eps



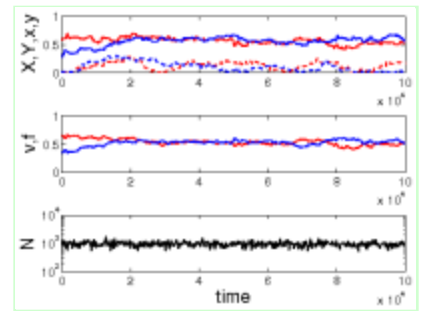
a=0.5.b=0.50.s=2.0.mu=0.00010.3.eps



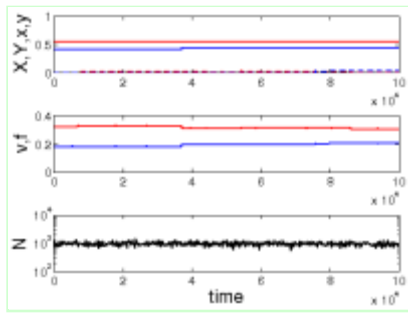
a=0.5.b=0.50.s=2.0.mu=0.00100.1.eps



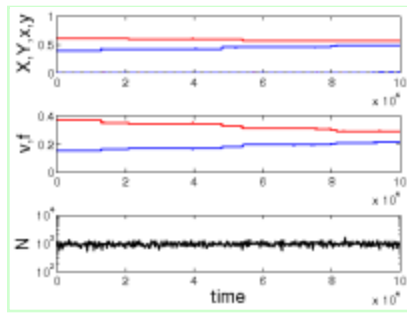
a=0.5.b=0.50.s=2.0.mu=0.00100.2.eps



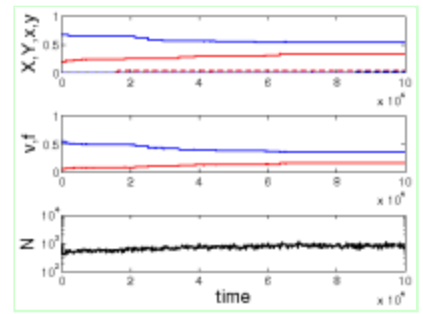
a=0.5.b=0.50.s=2.0.mu=0.00100.3.eps



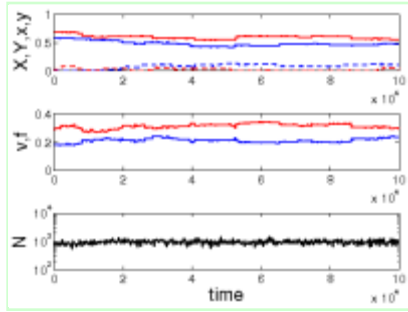
a=1.0.b=1.00.s=0.5.mu=0.00001.1.eps



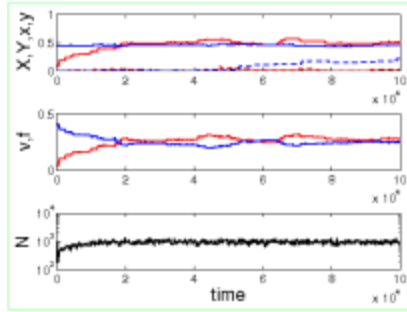
a=1.0.b=1.00.s=0.5.mu=0.00001.2.eps



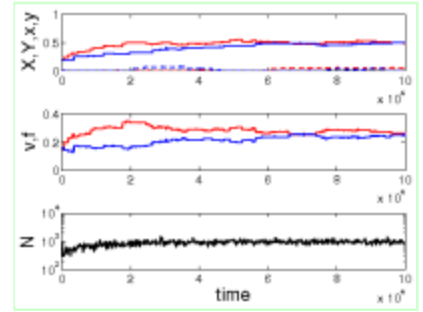
a=1.0.b=1.00.s=0.5.mu=0.00001.3.eps



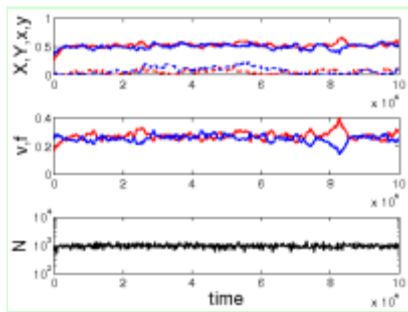
a=1.0.b=1.00.s=0.5.mu=0.00010.1.eps



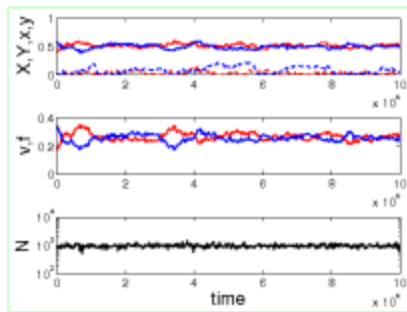
a=1.0.b=1.00.s=0.5.mu=0.00010.2.eps



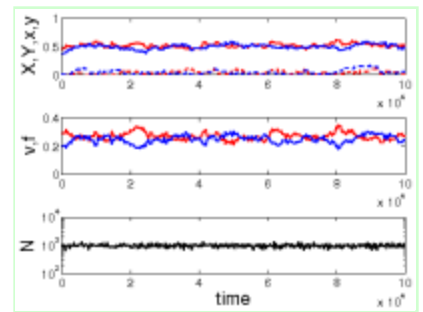
a=1.0.b=1.00.s=0.5.mu=0.00010.3.eps



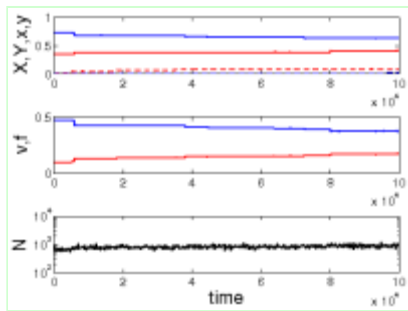
a=1.0.b=1.00.s=0.5.mu=0.00100.1.eps



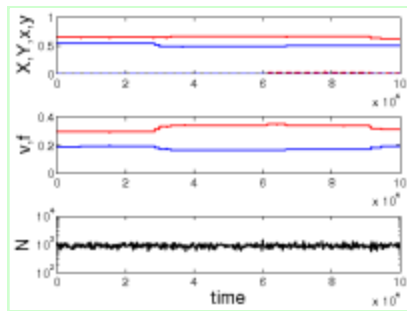
a=1.0.b=1.00.s=0.5.mu=0.00100.2.eps



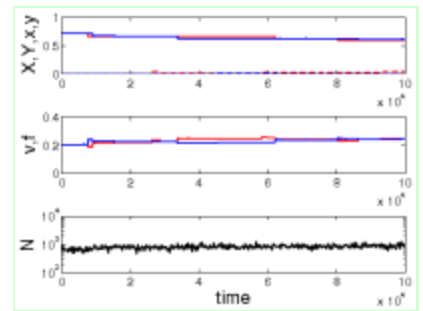
a=1.0.b=1.00.s=0.5.mu=0.00100.3.eps



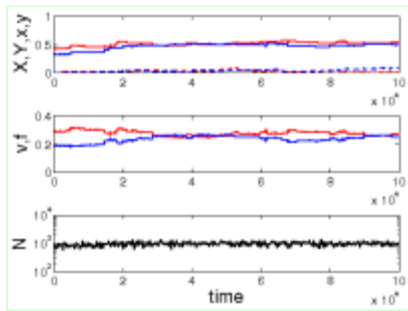
a=1.0.b=1.00.s=1.0.mu=0.00001.1.eps



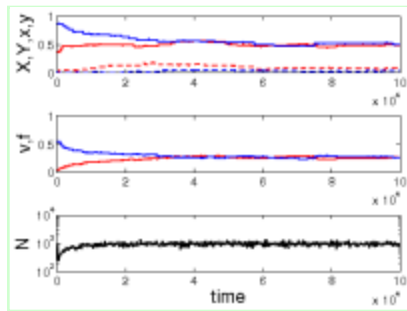
a=1.0.b=1.00.s=1.0.mu=0.00001.2.eps



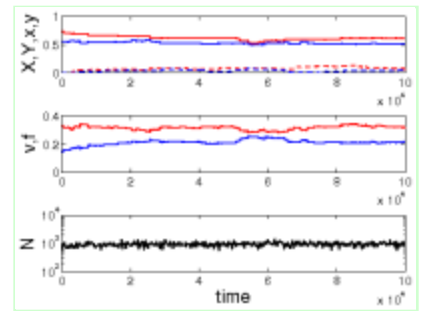
a=1.0.b=1.00.s=1.0.mu=0.00001.3.eps



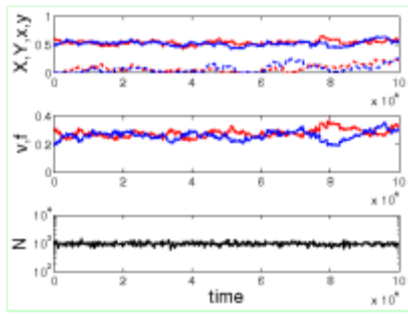
a=1.0.b=1.00.s=1.0.mu=0.00010.1.eps



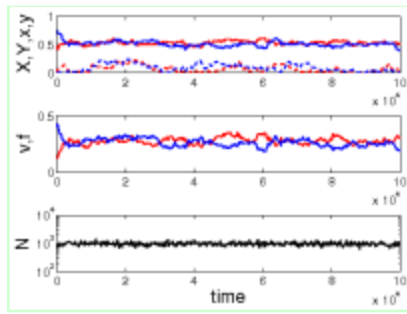
a=1.0.b=1.00.s=1.0.mu=0.00010.2.eps



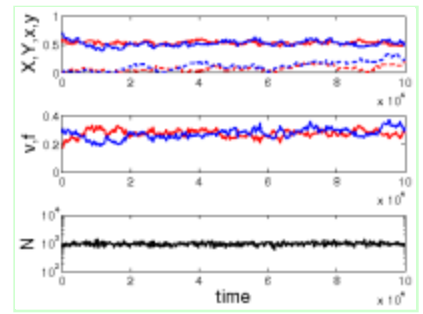
a=1.0.b=1.00.s=1.0.mu=0.00010.3.eps



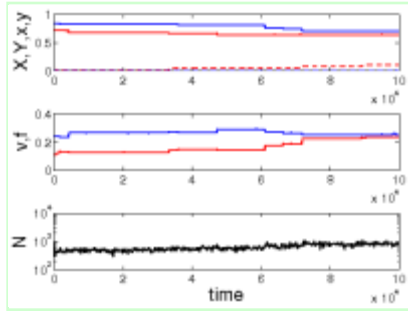
a=1.0.b=1.00.s=1.0.mu=0.00100.1.eps



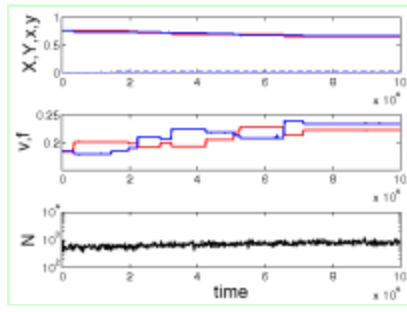
a=1.0.b=1.00.s=1.0.mu=0.00100.2.eps



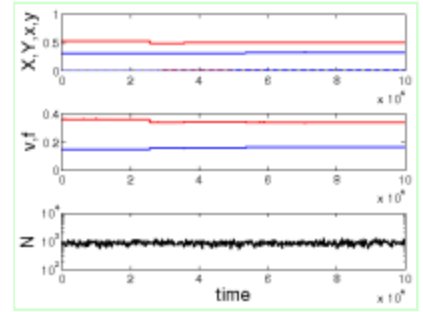
a=1.0.b=1.00.s=1.0.mu=0.00100.3.eps



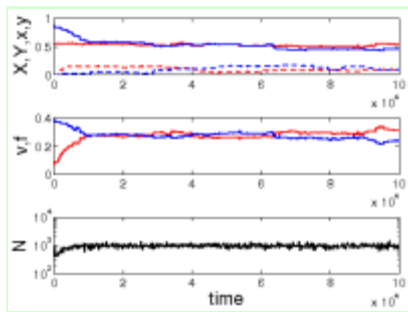
a=1.0.b=1.00.s=2.0.mu=0.00001.1.eps



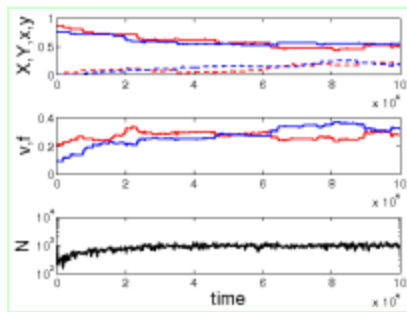
a=1.0.b=1.00.s=2.0.mu=0.00001.2.eps



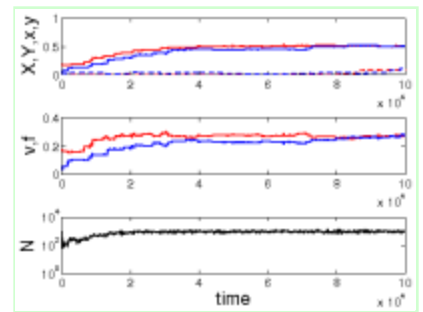
a=1.0.b=1.00.s=2.0.mu=0.00001.3.eps



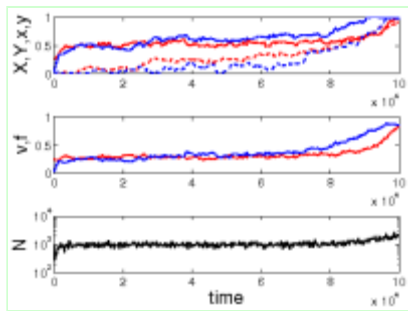
a=1.0.b=1.00.s=2.0.mu=0.00010.1.eps



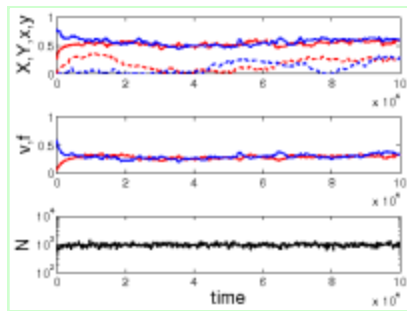
a=1.0.b=1.00.s=2.0.mu=0.00010.2.eps



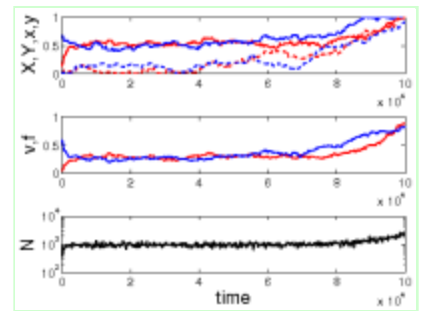
a=1.0.b=1.00.s=2.0.mu=0.00010.3.eps



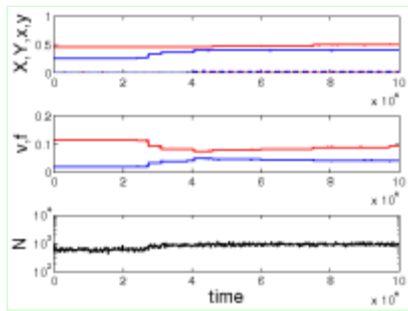
a=1.0.b=1.00.s=2.0.mu=0.00100.1.eps



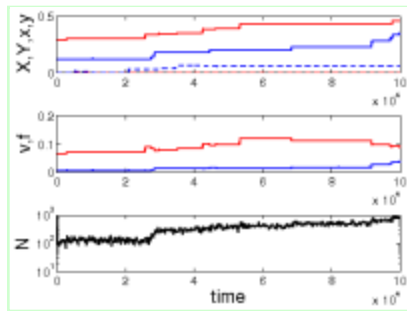
a=1.0.b=1.00.s=2.0.mu=0.00100.2.eps



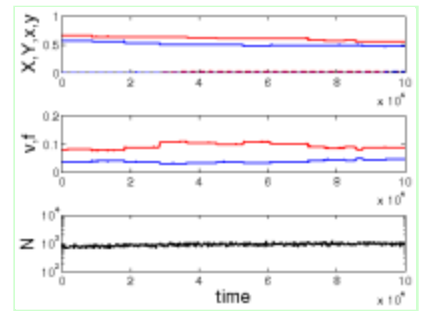
a=1.0.b=1.00.s=2.0.mu=0.00100.3.eps



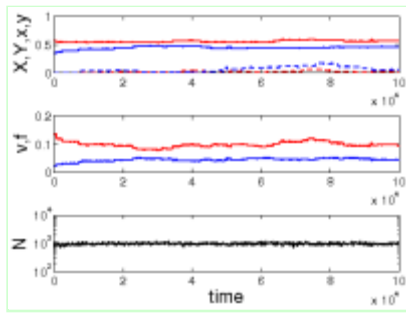
a=2.0.b=2.00.s=0.5.mu=0.00001.1.eps



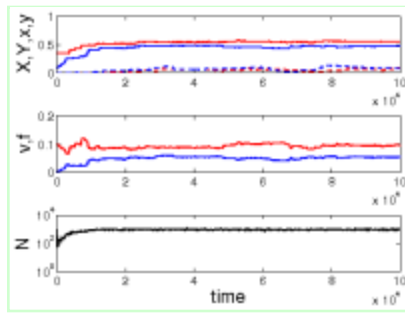
a=2.0.b=2.00.s=0.5.mu=0.00001.2.eps



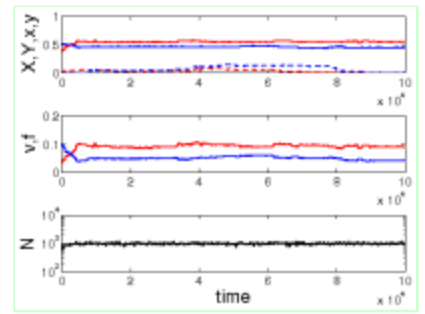
a=2.0.b=2.00.s=0.5.mu=0.00001.3.eps



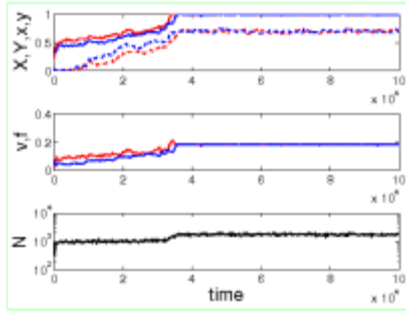
a=2.0.b=2.00.s=0.5.mu=0.00010.1.eps



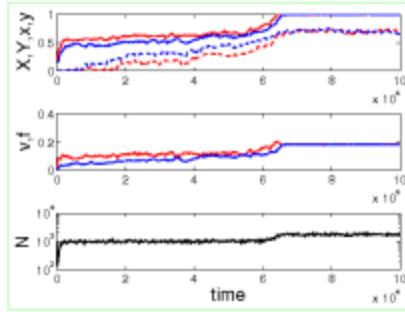
a=2.0.b=2.00.s=0.5.mu=0.00010.2.eps



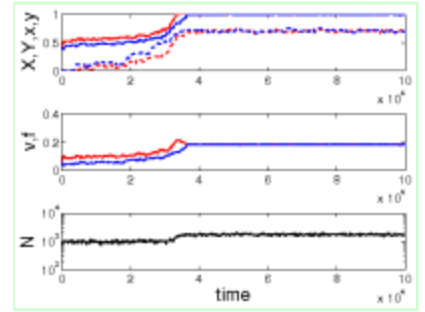
a=2.0.b=2.00.s=0.5.mu=0.00010.3.eps



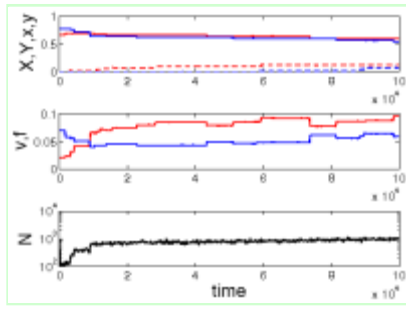
a=2.0.b=2.00.s=0.5.mu=0.00100.1.eps



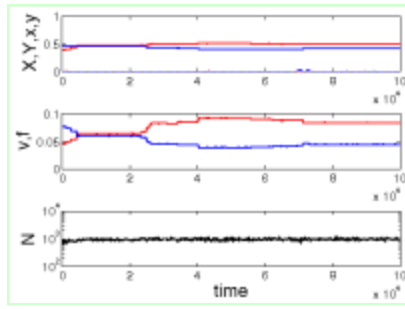
a=2.0.b=2.00.s=0.5.mu=0.00100.2.eps



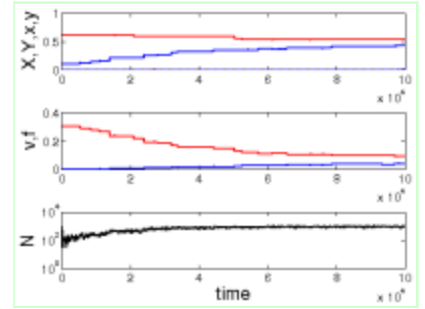
a=2.0.b=2.00.s=0.5.mu=0.00100.3.eps



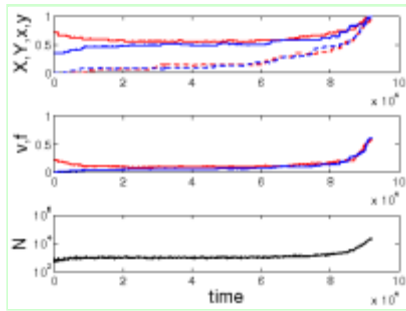
a=2.0.b=2.00.s=1.0.mu=0.00001.1.eps



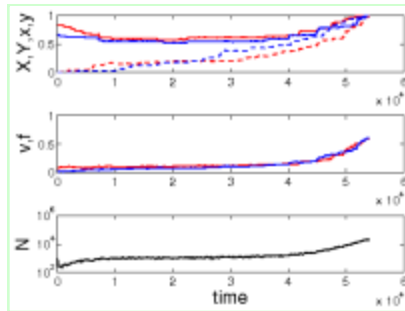
a=2.0.b=2.00.s=1.0.mu=0.00001.2.eps



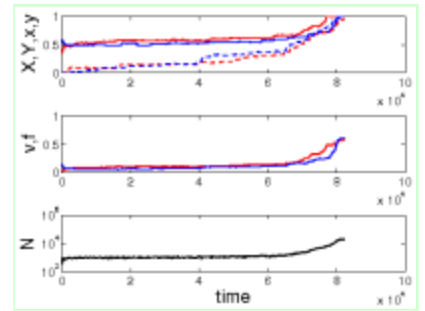
a=2.0.b=2.00.s=1.0.mu=0.00001.3.eps



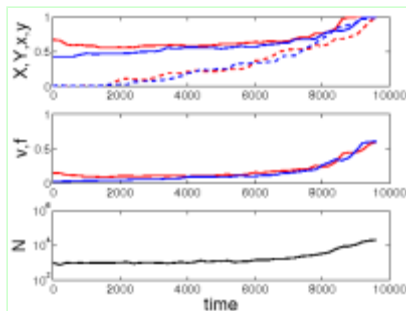
a=2.0.b=2.00.s=1.0.mu=0.00010.1.eps



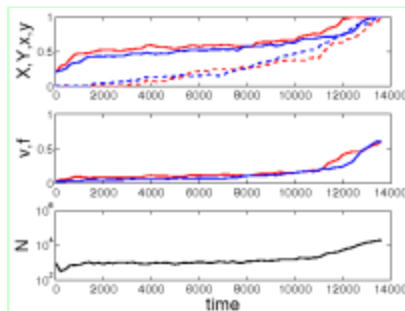
a=2.0.b=2.00.s=1.0.mu=0.00010.2.eps



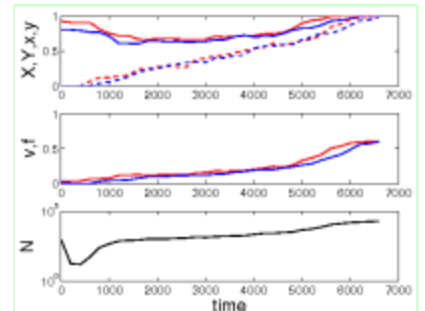
a=2.0.b=2.00.s=1.0.mu=0.00010.3.eps



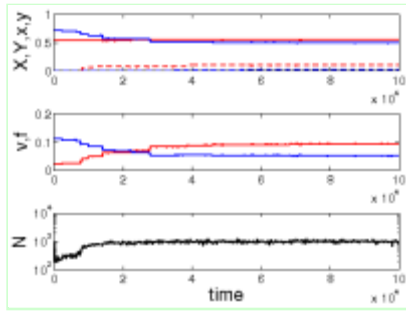
a=2.0.b=2.00.s=1.0.mu=0.00100.1.eps



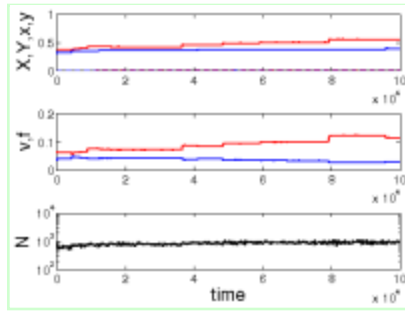
a=2.0.b=2.00.s=1.0.mu=0.00100.2.eps



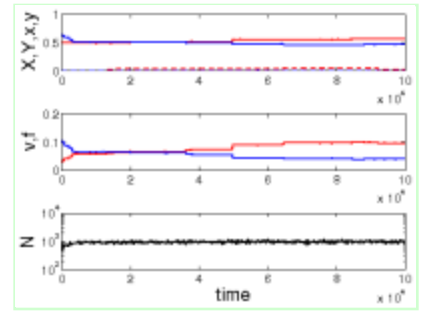
a=2.0.b=2.00.s=1.0.mu=0.00100.3.eps



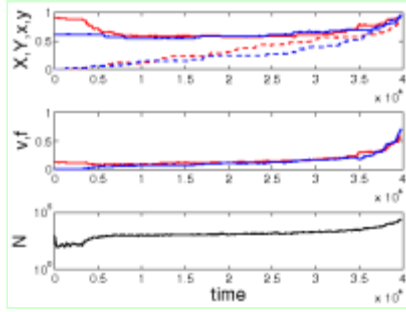
a=2.0.b=2.00.s=2.0.mu=0.00001.1.eps



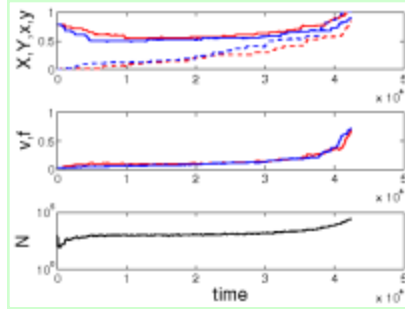
a=2.0.b=2.00.s=2.0.mu=0.00001.2.eps



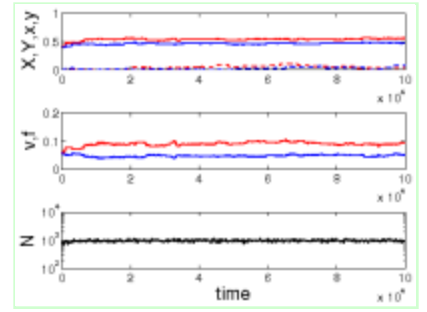
a=2.0.b=2.00.s=2.0.mu=0.00001.3.eps



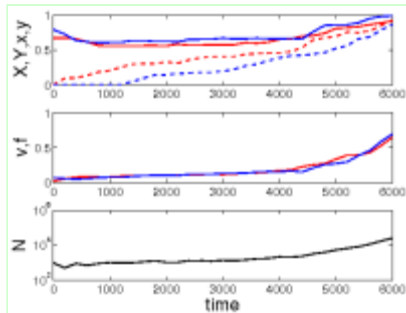
a=2.0.b=2.00.s=2.0.mu=0.00010.1.eps



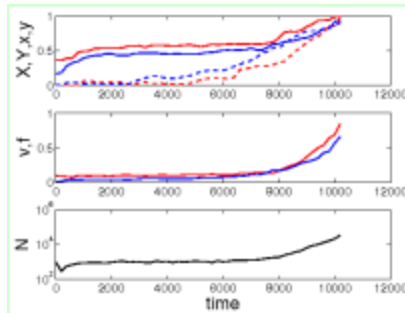
a=2.0.b=2.00.s=2.0.mu=0.00010.2.eps



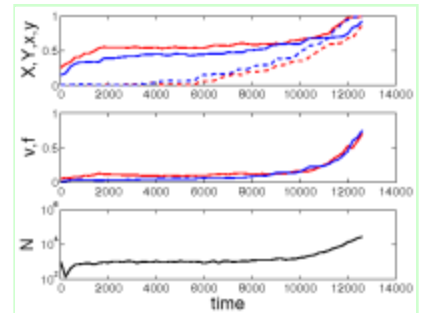
a=2.0.b=2.00.s=2.0.mu=0.00010.3.eps



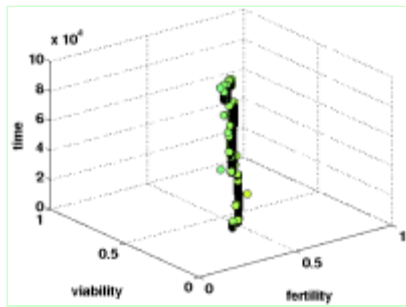
a=2.0.b=2.00.s=2.0.mu=0.00100.1.eps



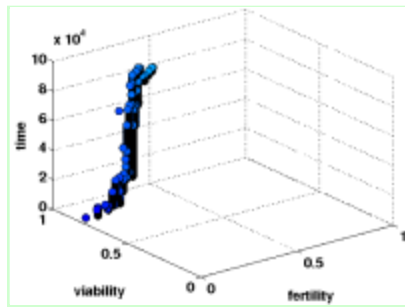
a=2.0.b=2.00.s=2.0.mu=0.00100.2.eps



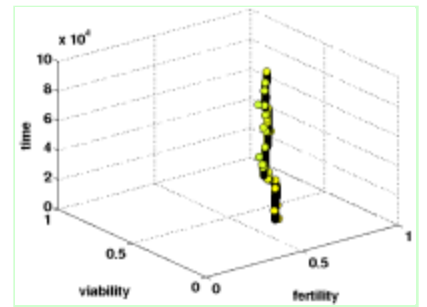
a=2.0.b=2.00.s=2.0.mu=0.00100.3.eps



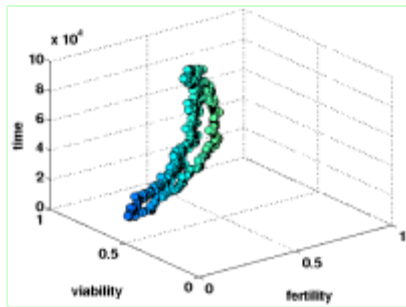
Q.a=0.5.b=0.50.s=0.5.mu=0.00001.1.eps



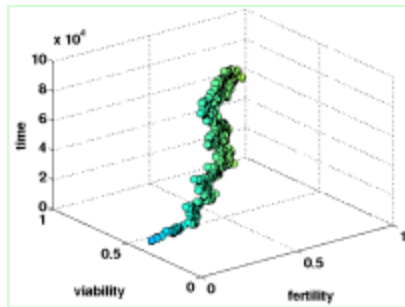
Q.a=0.5.b=0.50.s=0.5.mu=0.00001.2.eps



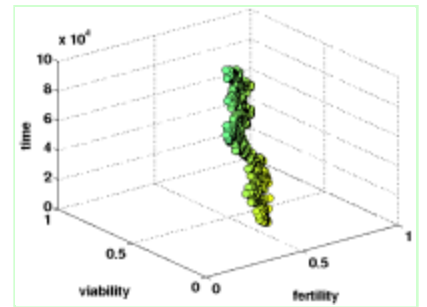
Q.a=0.5.b=0.50.s=0.5.mu=0.00001.3.eps



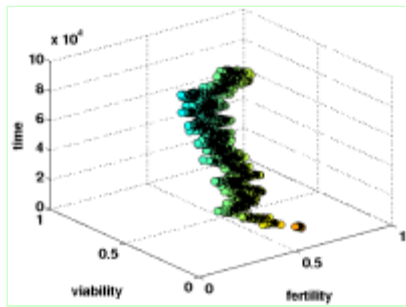
Q.a=0.5.b=0.50.s=0.5.mu=0.00010.1.eps



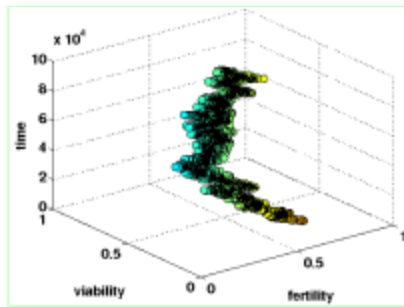
Q.a=0.5.b=0.50.s=0.5.mu=0.00010.2.eps



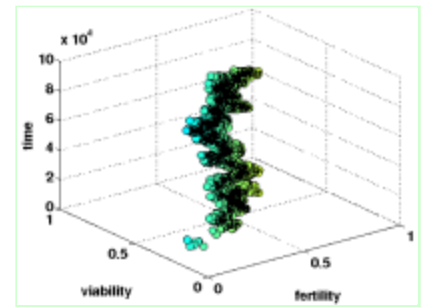
Q.a=0.5.b=0.50.s=0.5.mu=0.00010.3.eps



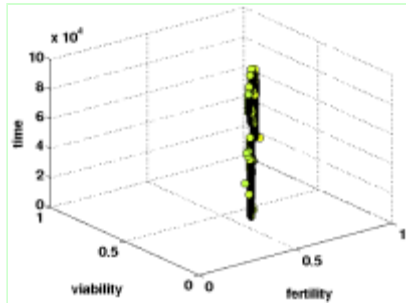
Q.a=0.5.b=0.50.s=0.5.mu=0.00100.1.eps



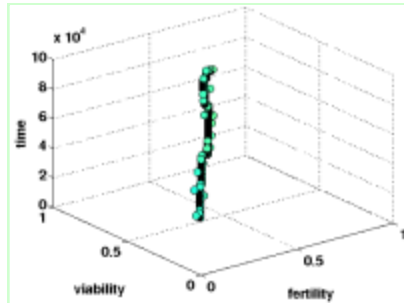
Q.a=0.5.b=0.50.s=0.5.mu=0.00100.2.eps



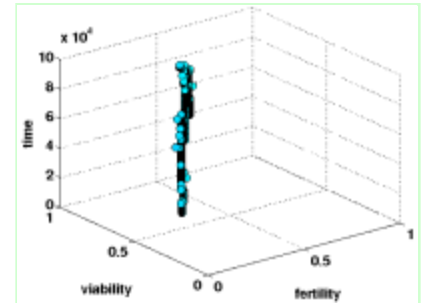
Q.a=0.5.b=0.50.s=0.5.mu=0.00100.3.eps



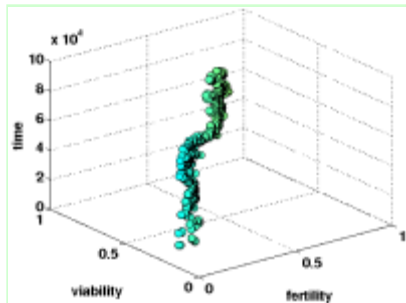
Q.a=0.5.b=0.50.s=1.0.mu=0.00001.1.eps



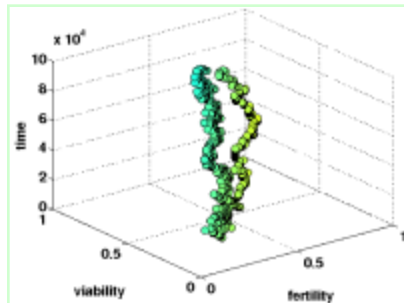
Q.a=0.5.b=0.50.s=1.0.mu=0.00001.2.eps



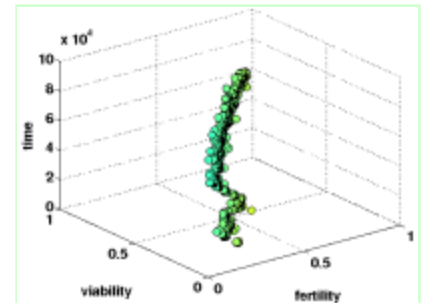
Q.a=0.5.b=0.50.s=1.0.mu=0.00001.3.eps



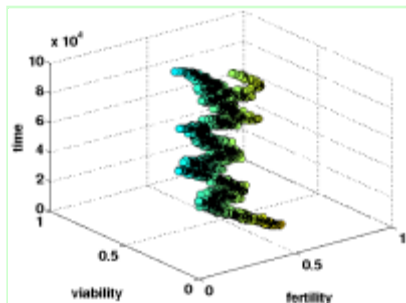
Q.a=0.5.b=0.50.s=1.0.mu=0.00010.1.eps



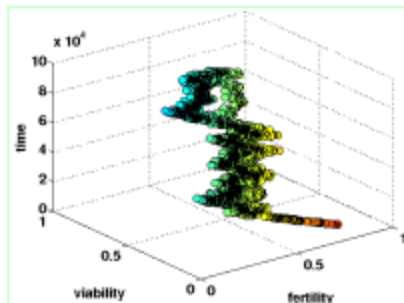
Q.a=0.5.b=0.50.s=1.0.mu=0.00010.2.eps



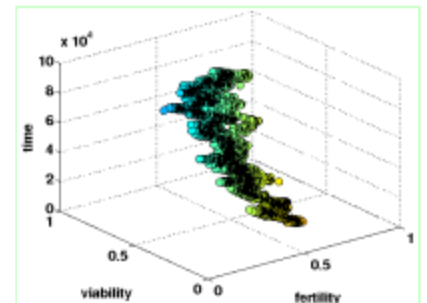
Q.a=0.5.b=0.50.s=1.0.mu=0.00010.3.eps



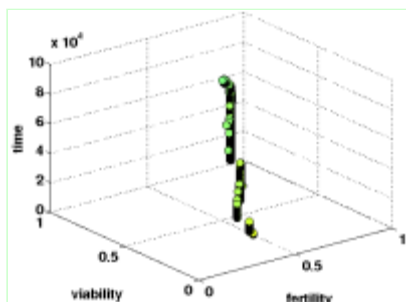
Q.a=0.5.b=0.50.s=1.0.mu=0.00100.1.eps



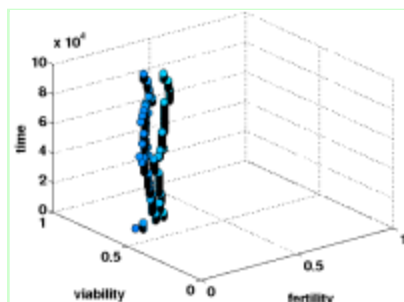
Q.a=0.5.b=0.50.s=1.0.mu=0.00100.2.eps



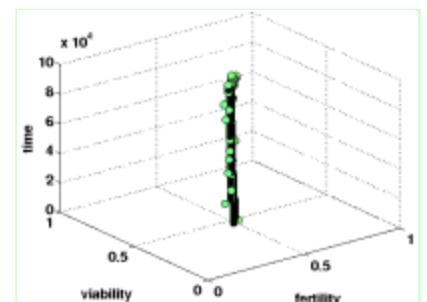
Q.a=0.5.b=0.50.s=1.0.mu=0.00100.3.eps



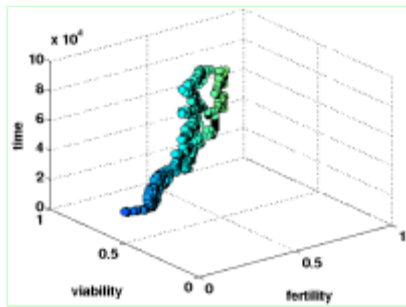
Q.a=0.5.b=0.50.s=2.0.mu=0.00001.1.eps



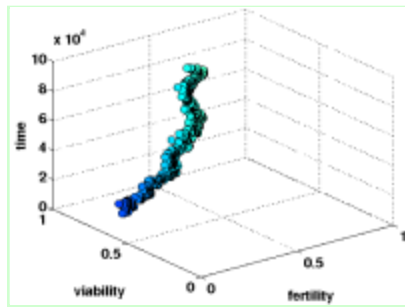
Q.a=0.5.b=0.50.s=2.0.mu=0.00001.2.eps



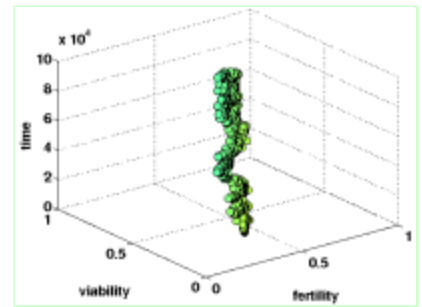
Q.a=0.5.b=0.50.s=2.0.mu=0.00001.3.eps



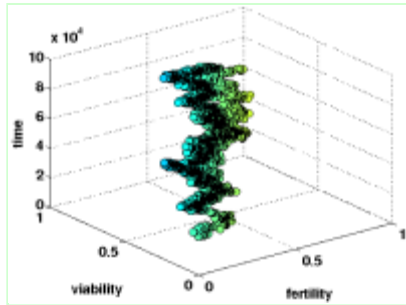
Q.a=0.5.b=0.50.s=2.0.mu=0.00010.1.eps



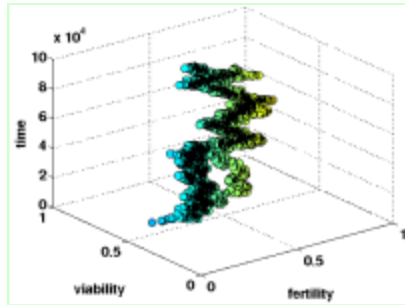
Q.a=0.5.b=0.50.s=2.0.mu=0.00010.2.eps



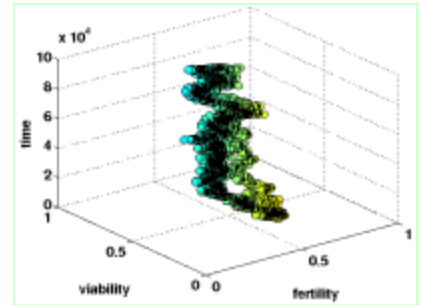
Q.a=0.5.b=0.50.s=2.0.mu=0.00010.3.eps



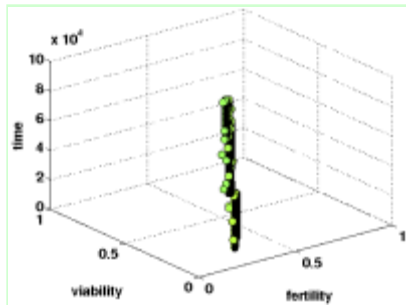
Q.a=0.5.b=0.50.s=2.0.mu=0.00100.1.eps



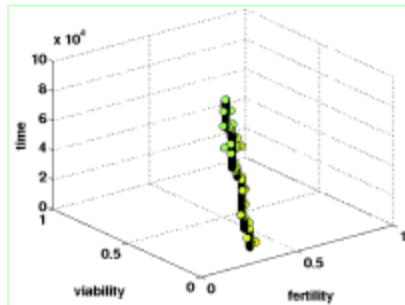
Q.a=0.5.b=0.50.s=2.0.mu=0.00100.2.eps



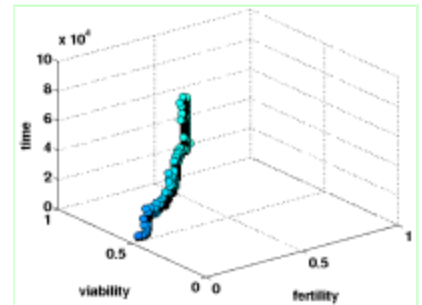
Q.a=0.5.b=0.50.s=2.0.mu=0.00100.3.eps



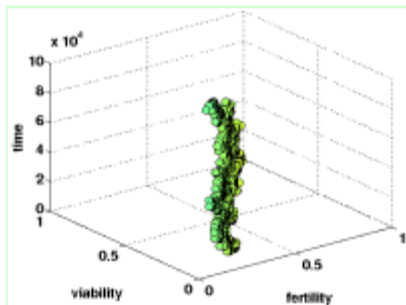
Q.a=1.0.b=1.00.s=0.5.mu=0.00001.1.eps



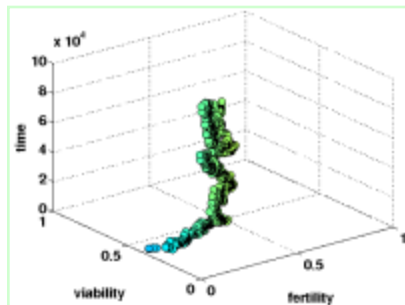
Q.a=1.0.b=1.00.s=0.5.mu=0.00001.2.eps



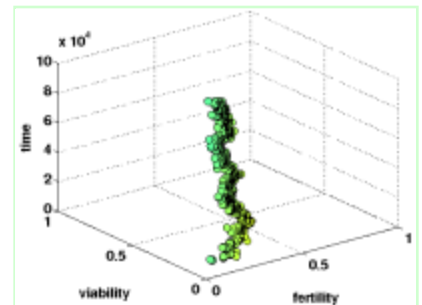
Q.a=1.0.b=1.00.s=0.5.mu=0.00001.3.eps



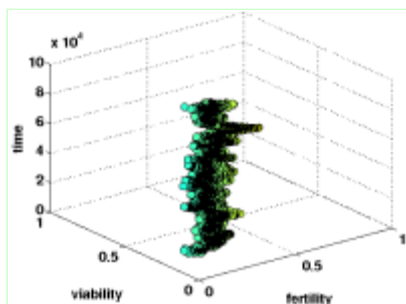
Q.a=1.0.b=1.00.s=0.5.mu=0.00010.1.eps



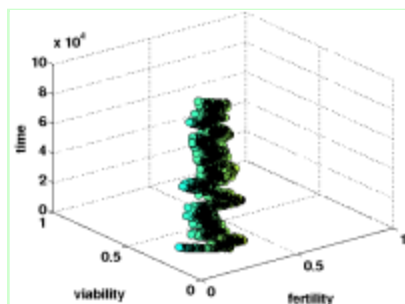
Q.a=1.0.b=1.00.s=0.5.mu=0.00010.2.eps



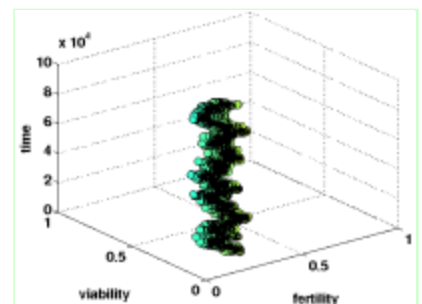
Q.a=1.0.b=1.00.s=0.5.mu=0.00010.3.eps



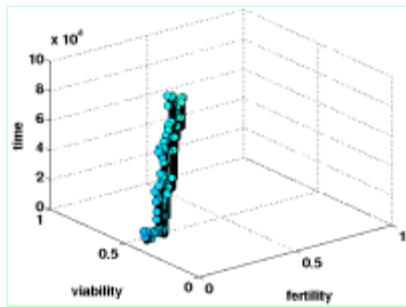
Q.a=1.0.b=1.00.s=0.5.mu=0.00100.1.eps



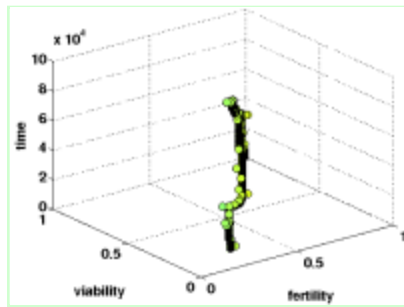
Q.a=1.0.b=1.00.s=0.5.mu=0.00100.2.eps



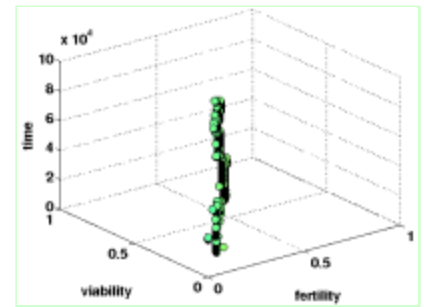
Q.a=1.0.b=1.00.s=0.5.mu=0.00100.3.eps



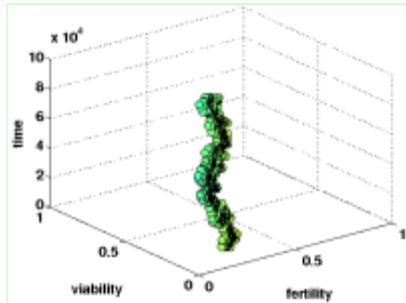
Q.a=1.0.b=1.00.s=1.0.mu=0.00001.1.eps



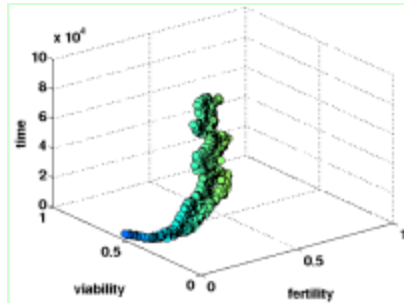
Q.a=1.0.b=1.00.s=1.0.mu=0.00001.2.eps



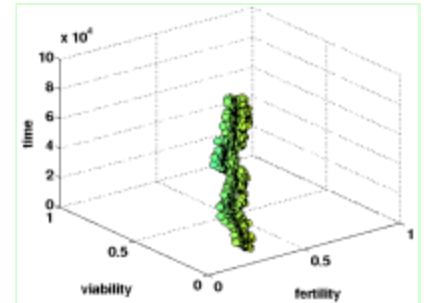
Q.a=1.0.b=1.00.s=1.0.mu=0.00001.3.eps



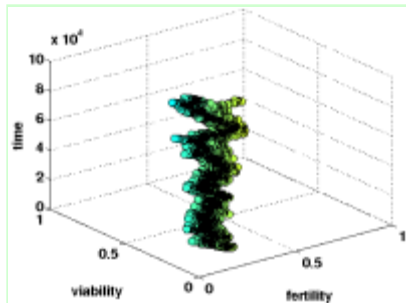
Q.a=1.0.b=1.00.s=1.0.mu=0.00010.1.eps



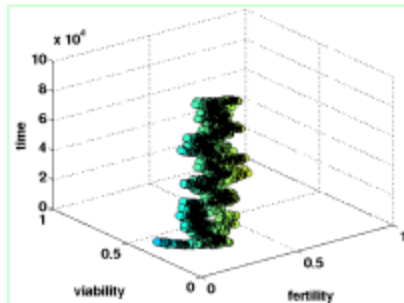
Q.a=1.0.b=1.00.s=1.0.mu=0.00010.2.eps



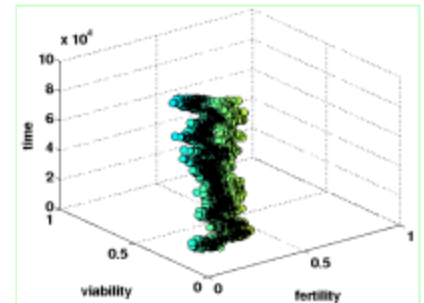
Q.a=1.0.b=1.00.s=1.0.mu=0.00010.3.eps



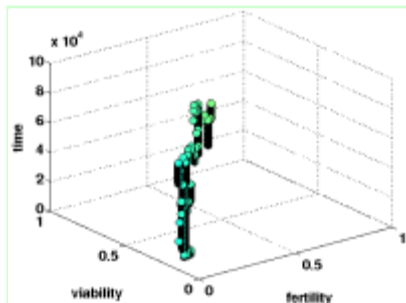
Q.a=1.0.b=1.00.s=1.0.mu=0.00100.1.eps



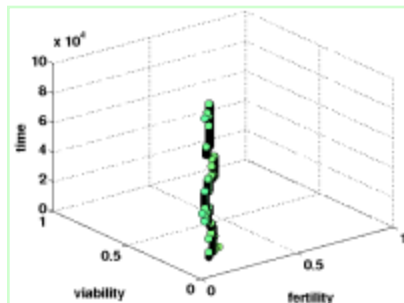
Q.a=1.0.b=1.00.s=1.0.mu=0.00100.2.eps



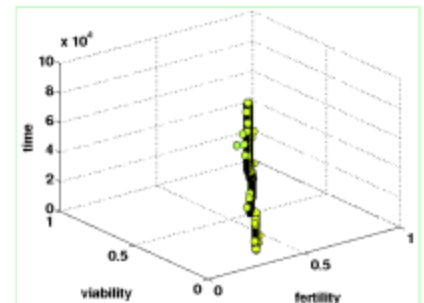
Q.a=1.0.b=1.00.s=1.0.mu=0.00100.3.eps



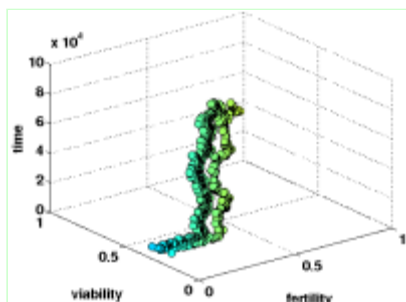
Q.a=1.0.b=1.00.s=2.0.mu=0.00001.1.eps



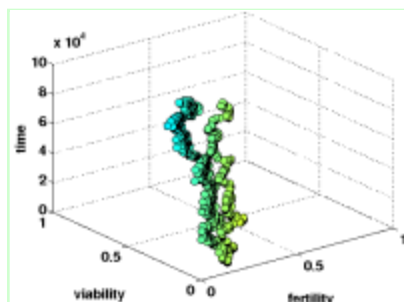
Q.a=1.0.b=1.00.s=2.0.mu=0.00001.2.eps



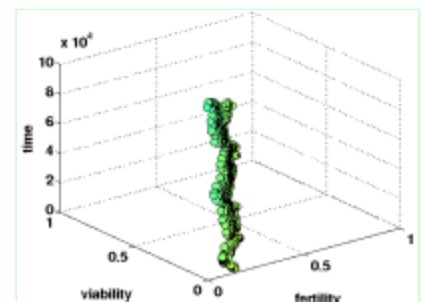
Q.a=1.0.b=1.00.s=2.0.mu=0.00001.3.eps



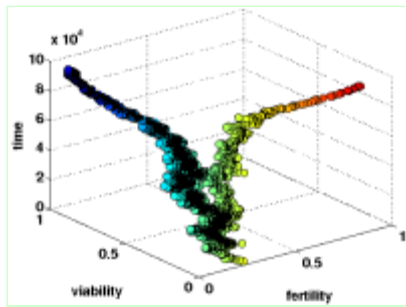
Q.a=1.0.b=1.00.s=2.0.mu=0.00010.1.eps



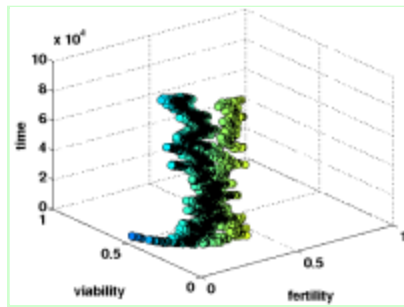
Q.a=1.0.b=1.00.s=2.0.mu=0.00010.2.eps



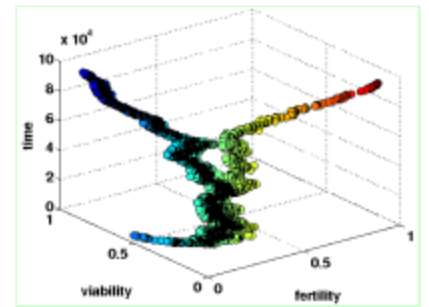
Q.a=1.0.b=1.00.s=2.0.mu=0.00010.3.eps



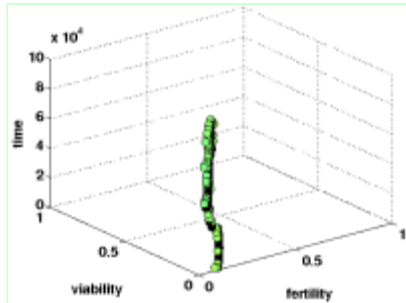
Q.a=1.0.b=1.00.s=2.0.mu=0.00100.1.eps



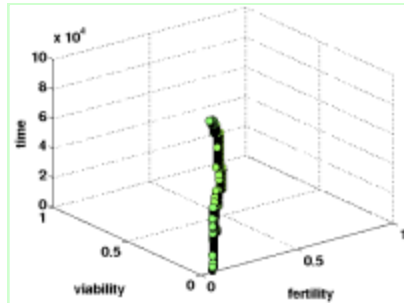
Q.a=1.0.b=1.00.s=2.0.mu=0.00100.2.eps



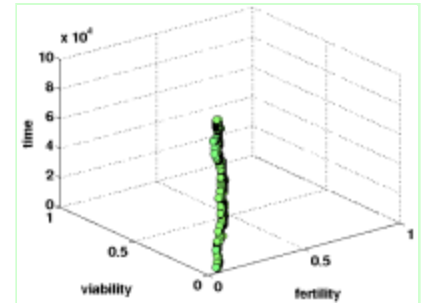
Q.a=1.0.b=1.00.s=2.0.mu=0.00100.3.eps



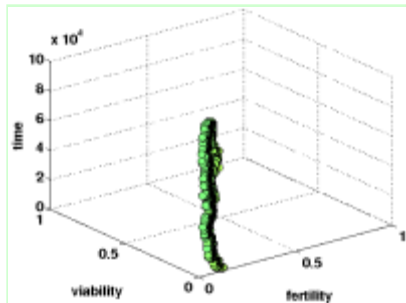
Q.a=2.0.b=2.00.s=0.5.mu=0.00001.1.eps



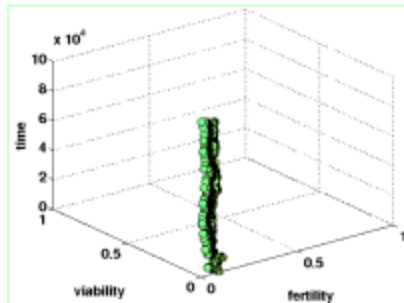
Q.a=2.0.b=2.00.s=0.5.mu=0.00001.2.eps



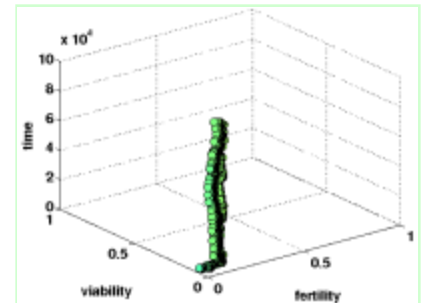
Q.a=2.0.b=2.00.s=0.5.mu=0.00001.3.eps



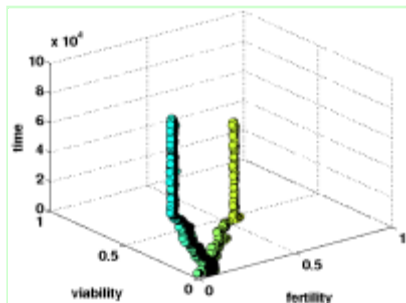
Q.a=2.0.b=2.00.s=0.5.mu=0.00010.1.eps



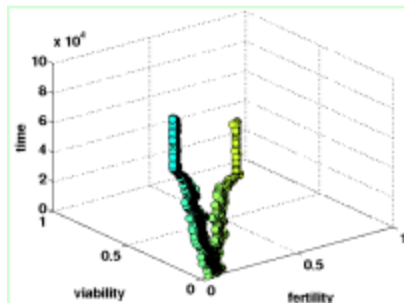
Q.a=2.0.b=2.00.s=0.5.mu=0.00010.2.eps



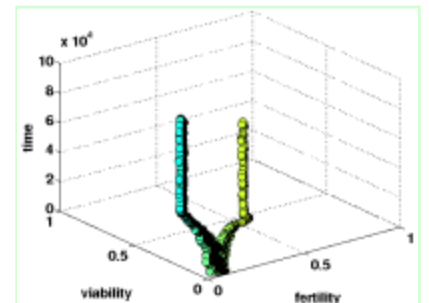
Q.a=2.0.b=2.00.s=0.5.mu=0.00010.3.eps



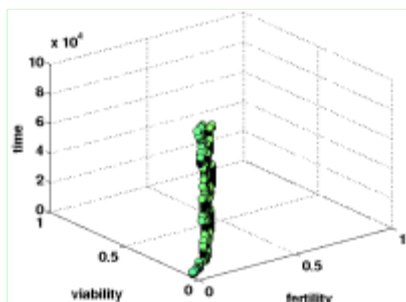
Q.a=2.0.b=2.00.s=0.5.mu=0.00100.1.eps



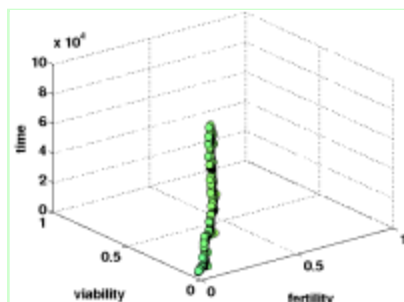
Q.a=2.0.b=2.00.s=0.5.mu=0.00100.2.eps



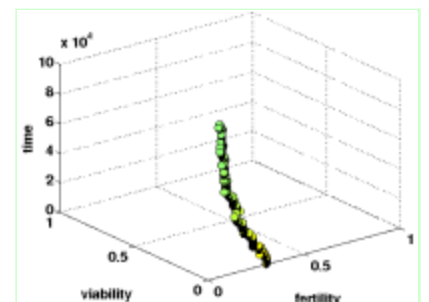
Q.a=2.0.b=2.00.s=0.5.mu=0.00100.3.eps



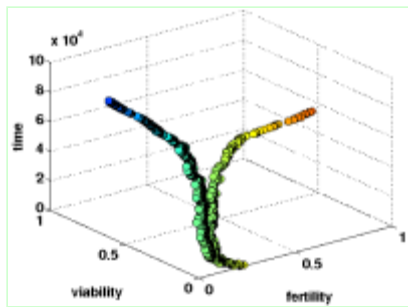
Q.a=2.0.b=2.00.s=1.0.mu=0.00001.1.eps



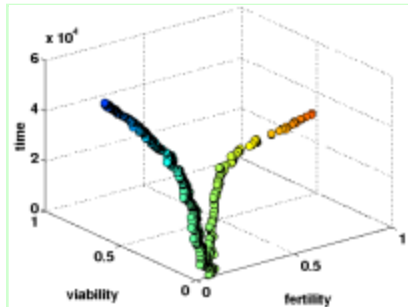
Q.a=2.0.b=2.00.s=1.0.mu=0.00001.2.eps



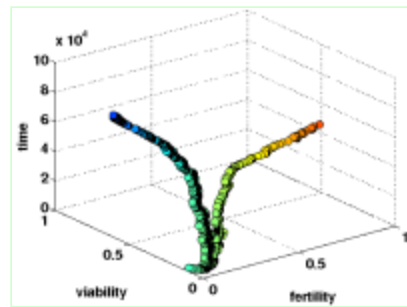
Q.a=2.0.b=2.00.s=1.0.mu=0.00001.3.eps



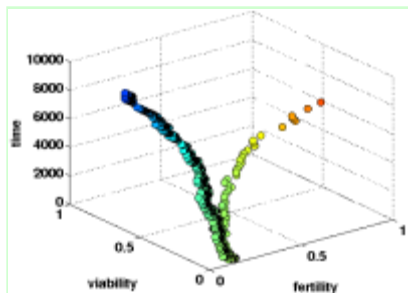
Q.a=2.0.b=2.00.s=1.0.mu=0.00010.1.eps



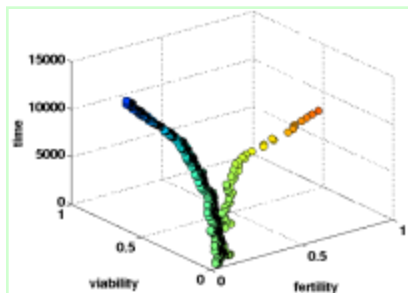
Q.a=2.0.b=2.00.s=1.0.mu=0.00010.2.eps



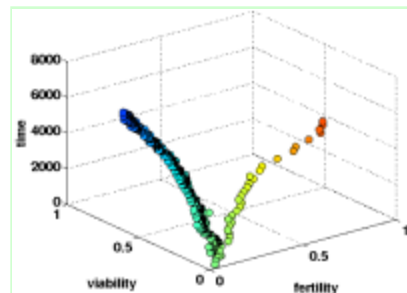
Q.a=2.0.b=2.00.s=1.0.mu=0.00010.3.eps



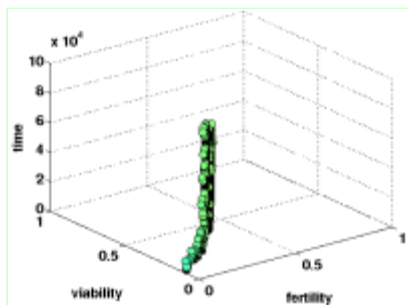
Q.a=2.0.b=2.00.s=1.0.mu=0.00100.1.eps



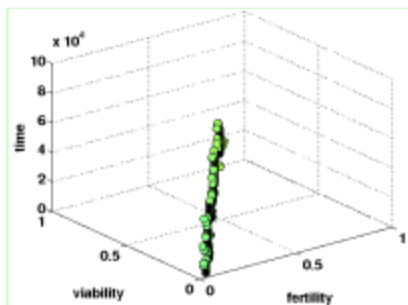
Q.a=2.0.b=2.00.s=1.0.mu=0.00100.2.eps



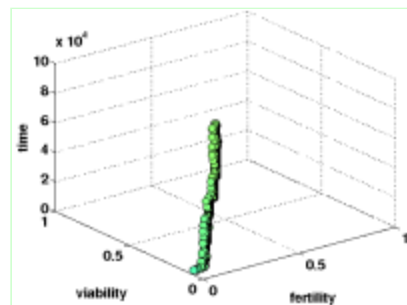
Q.a=2.0.b=2.00.s=1.0.mu=0.00100.3.eps



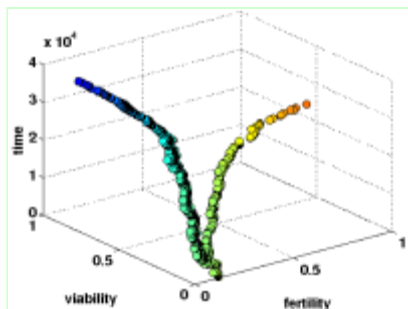
Q.a=2.0.b=2.00.s=2.0.mu=0.00001.1.eps



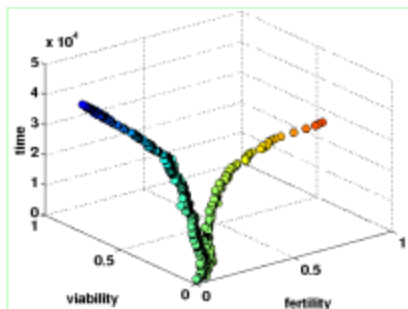
Q.a=2.0.b=2.00.s=2.0.mu=0.00001.2.eps



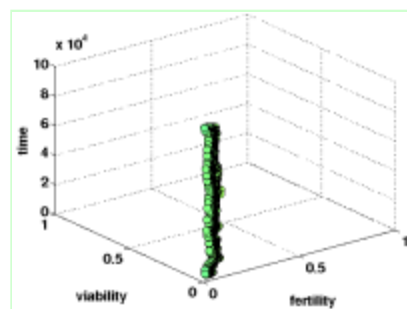
Q.a=2.0.b=2.00.s=2.0.mu=0.00001.3.eps



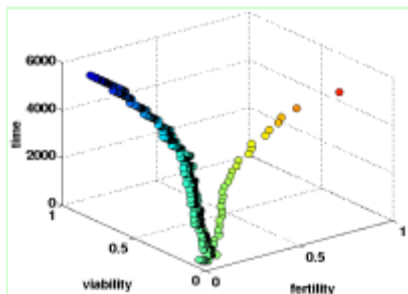
Q.a=2.0.b=2.00.s=2.0.mu=0.00010.1.eps



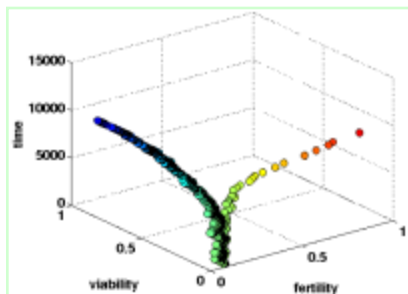
Q.a=2.0.b=2.00.s=2.0.mu=0.00010.2.eps



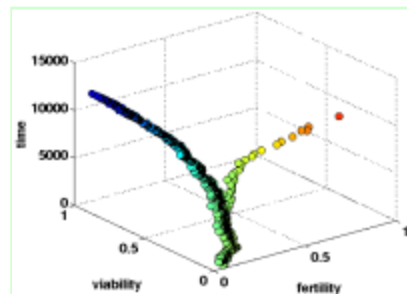
Q.a=2.0.b=2.00.s=2.0.mu=0.00010.3.eps



Q.a=2.0.b=2.00.s=2.0.mu=0.00100.1.eps



Q.a=2.0.b=2.00.s=2.0.mu=0.00100.2.eps



Q.a=2.0.b=2.00.s=2.0.mu=0.00100.3.eps