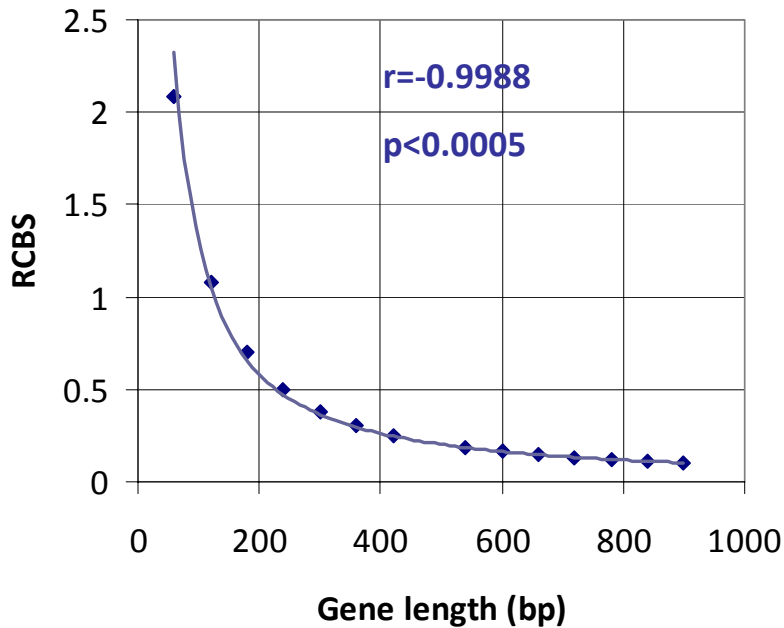


Mean RCBS vs. length (A)



Mean RCBS vs. length (B)

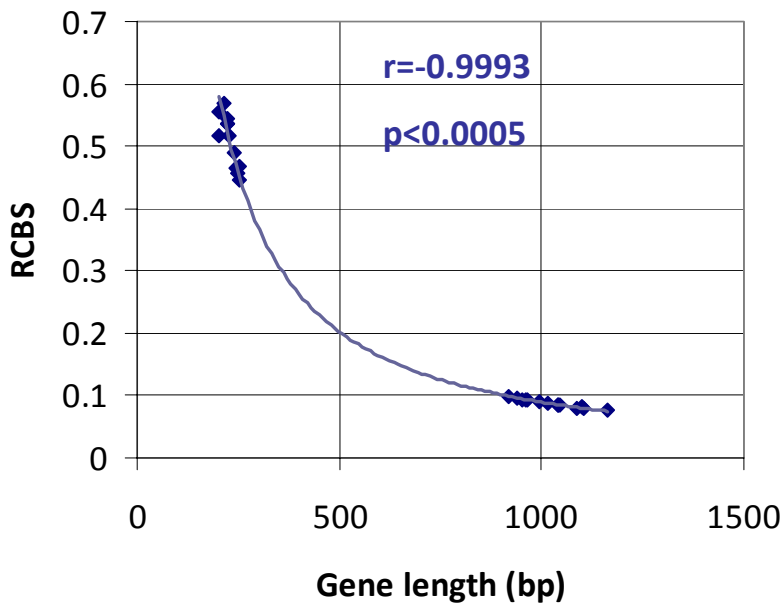


Figure S1 – Distribution of average RCBS values vs. length for 14 group lengths of arbitrary nucleotide sequences randomized 500 times (A) and 26 *E. coli* gene sequences, each randomized 500 times. Data from Roymondal *et al.* Tables SIIA and SIIB .

CAI vs. Gene length (4,029 *E. coli* genes)

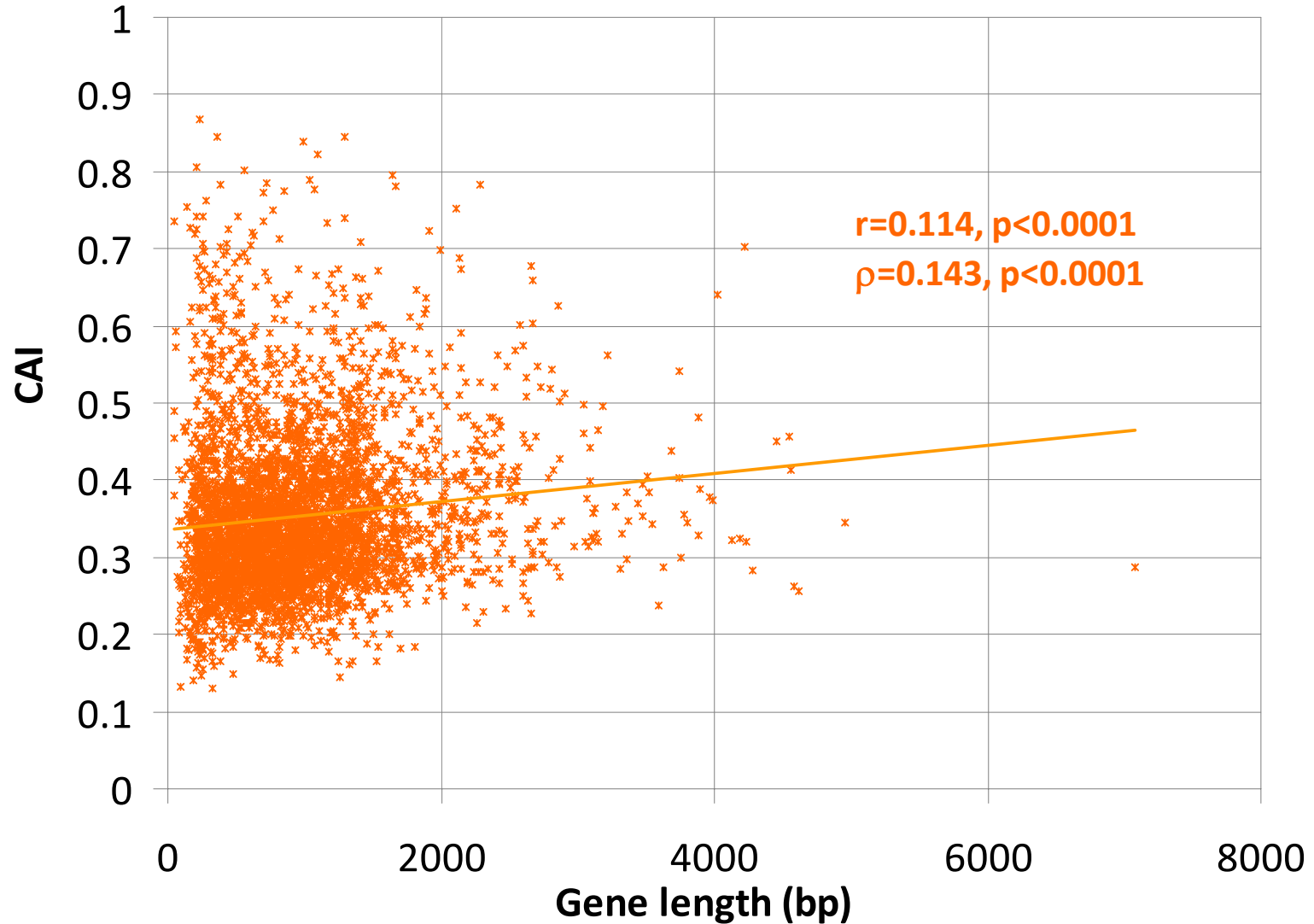


Figure S2 – Distribution of CAI values vs. length for the 4,029 *E. coli* genes in the M^{3D}-derived expression dataset.

RCBS vs. gene length

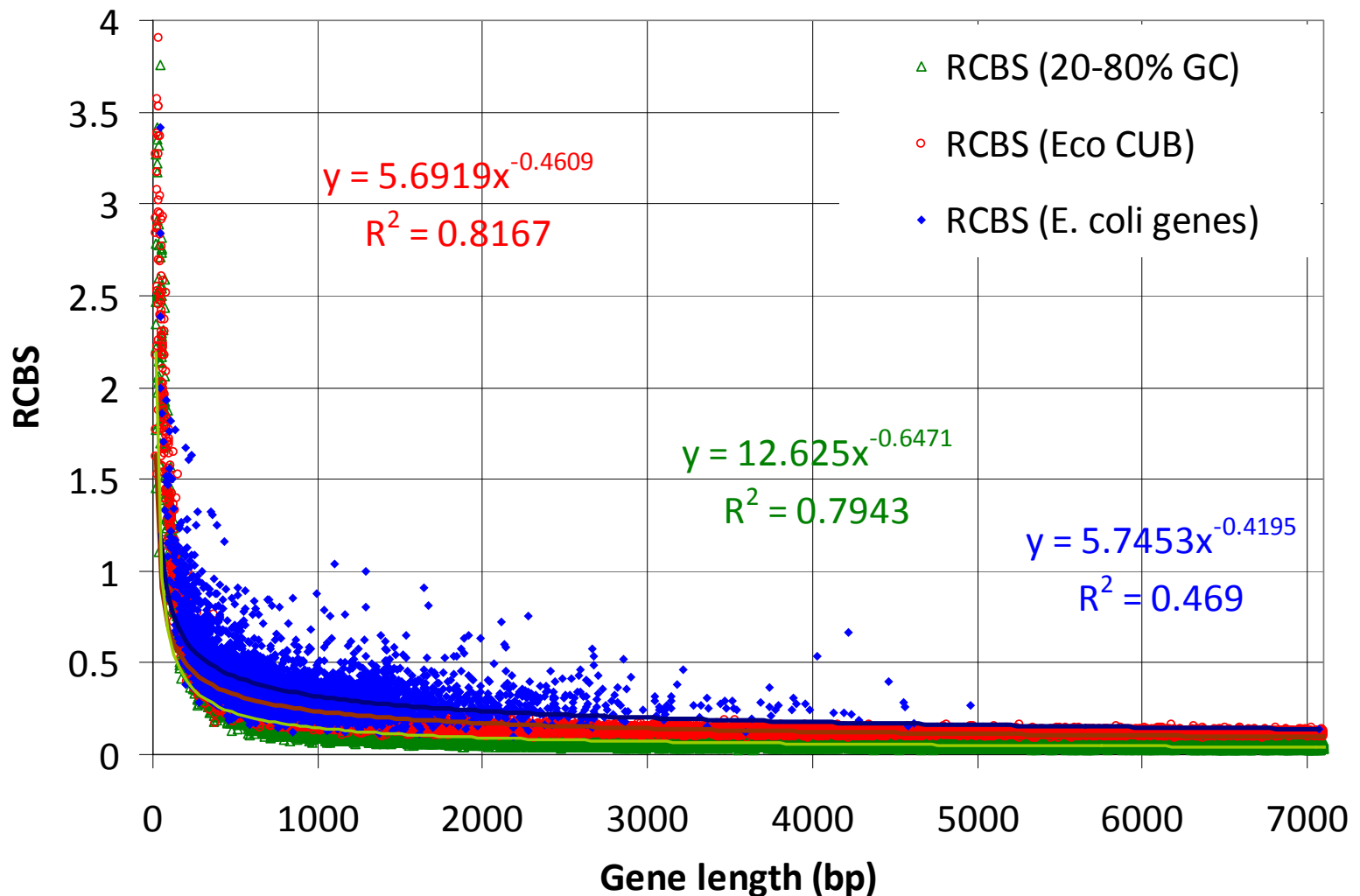
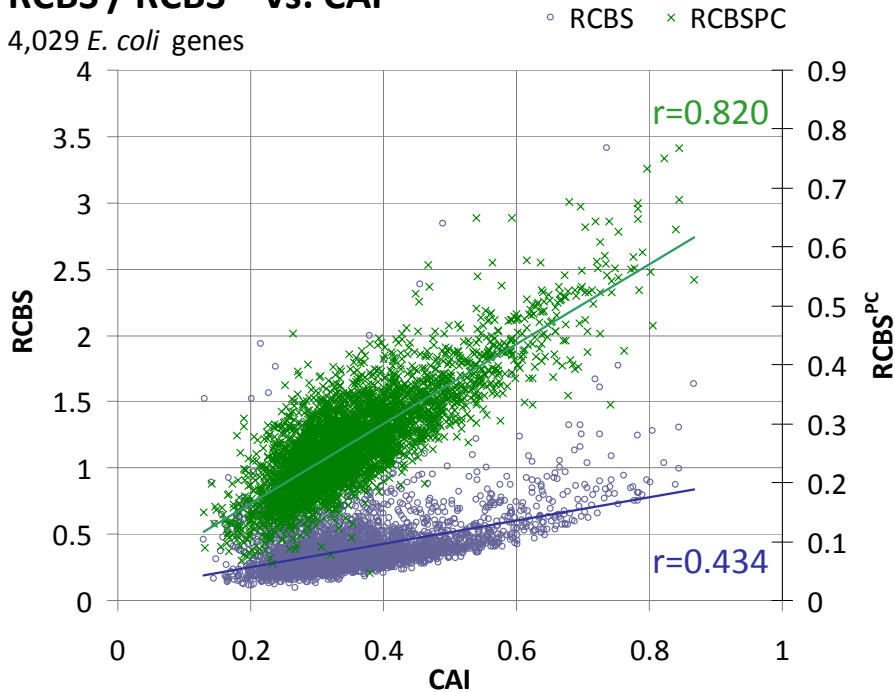


Figure S3 – Distribution of RCBS values vs. length for the 4,029 *E. coli* genes in the M^{3D}-derived expression dataset, 30,000 randomly generated sequences of random length with random %GC content in the 20%-80% range and 30,000 randomly generated sequences of random length following the *E. coli* codon usage bias (CUB). The power law fit equations are shown, together with their coefficients of determination (r^2). All correlation coefficients have $p < 0.000001$.

(A)

RCBS / RCBS^{PC} vs. CAI4,029 *E. coli* genes

(B)

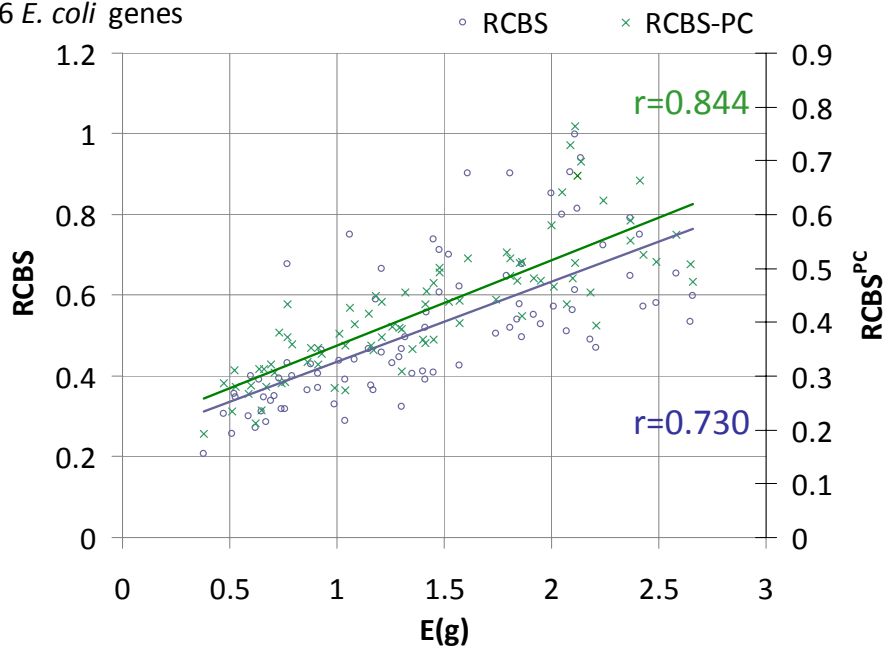
RCBS & RCBS^{PC} vs. E(g)96 *E. coli* genes

Figure S4 – (A) Distribution of RCBS and RCBS^{PC} values vs. CAI for the 4,029 *E. coli* genes in the M^{3D}-derived expression dataset. Correlation coefficients: $r=0.433^{***}$, $\rho=0.448^{***}$ for RCBS; $r=0.820^{***}$, $\rho=0.753^{***}$ for RCBS^{PC}. **(B)** Distribution of RCBS and RCBS^{PC} values vs. E(g) for the 96 genes in the Karlin *et al.* dataset. Correlation coefficients: $r=0.730^{***}$, $\rho=0.820^{***}$ for RCBS; $r=0.844^{***}$, $\rho=0.894^{***}$ for RCBS^{PC}.

Average expression vs. Length

31 experiments / 4,031 genes

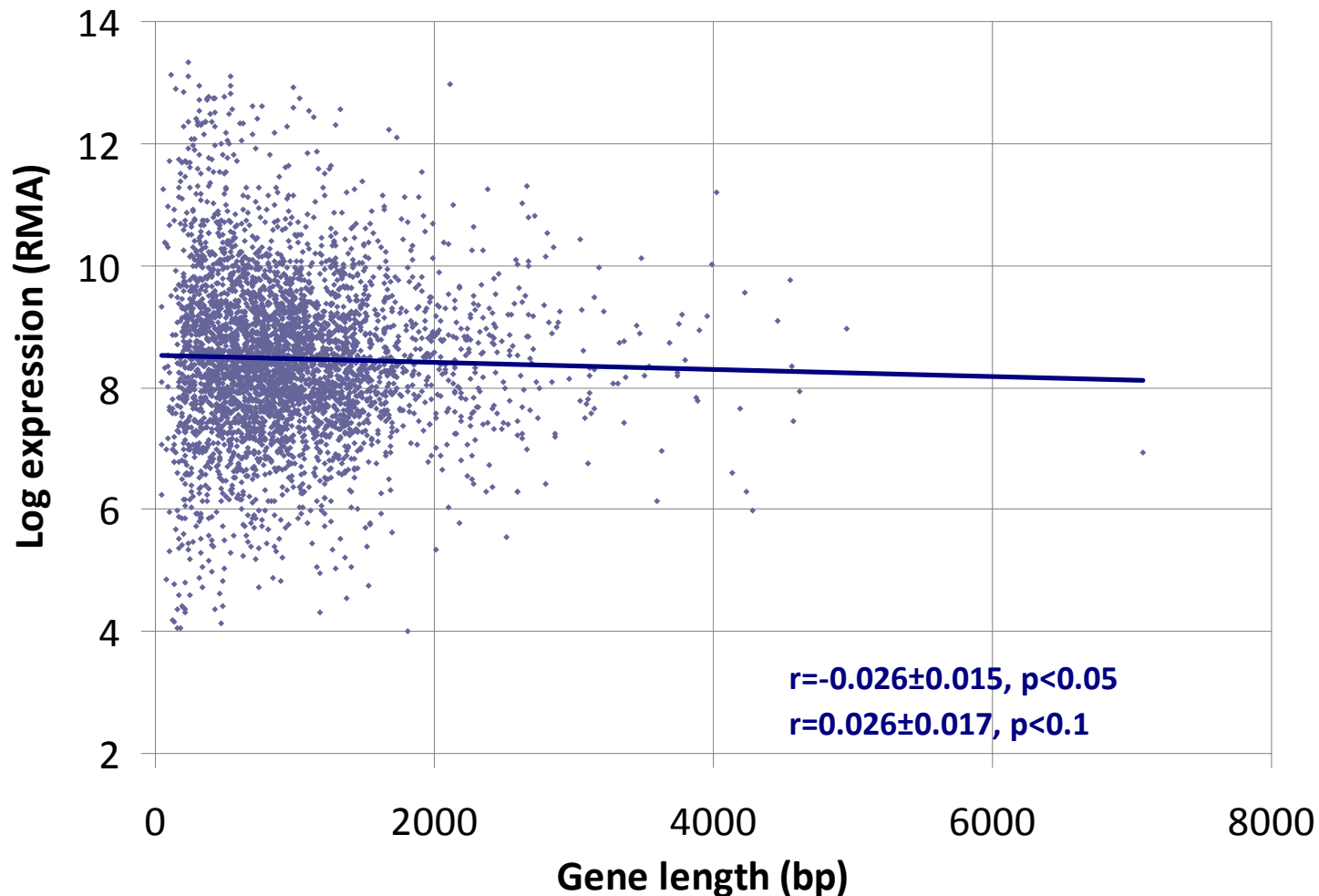


Figure S5 – Plot of log expression, normalized RMA values vs. gene length for 4,031 *E. coli* genes. The plot corresponds to the average log expression value for 31 experiments. Correlation coefficients were computed independently for each experiment and their mean and standard deviation are reported.

Gene length histogram

E. coli (4,031 genes)

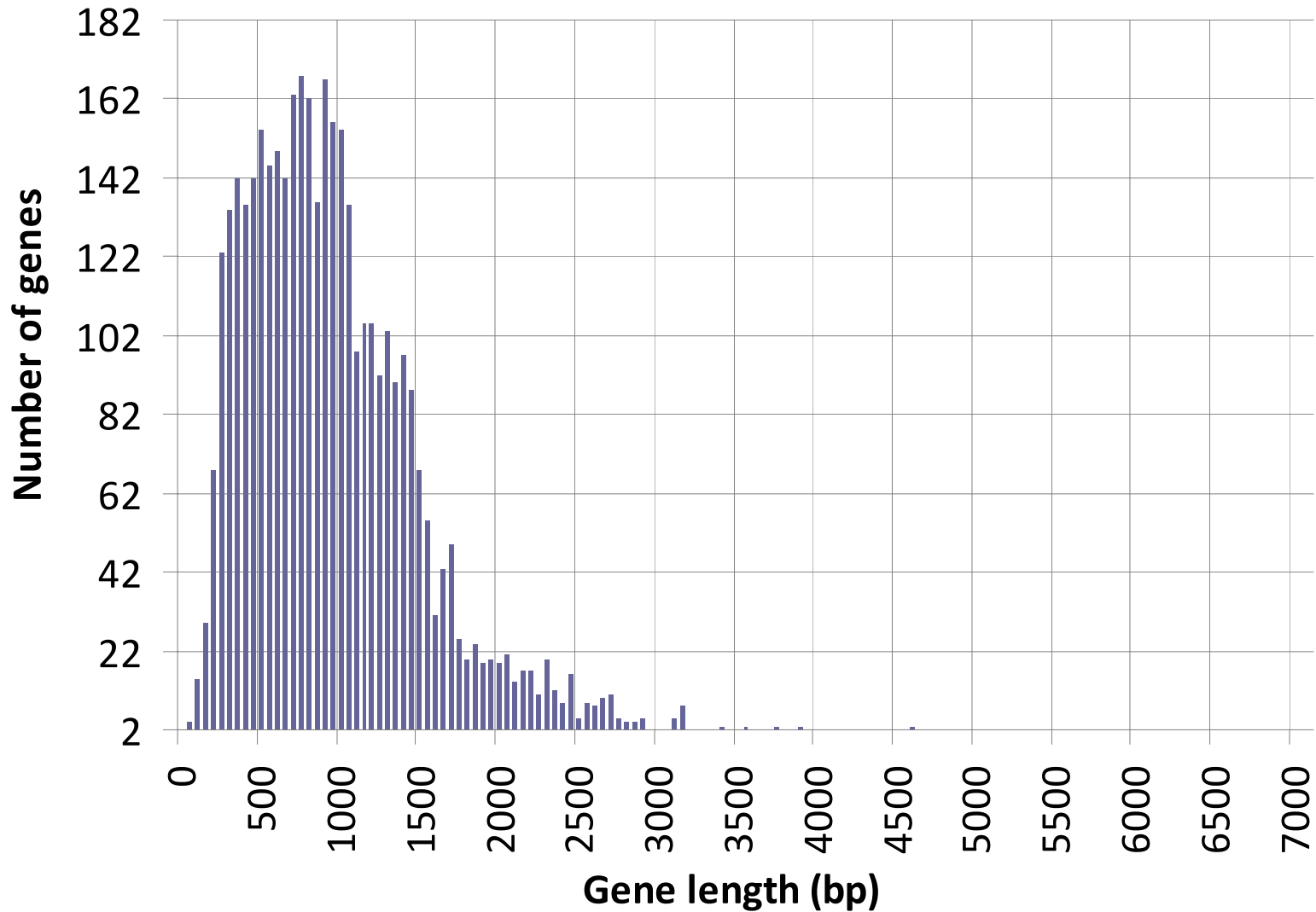


Figure S6 – Gene length histogram for 4,031 *E. coli* genes. Genes shorter than 1,000 bp account for more than a half (2,334 genes) of this dataset.