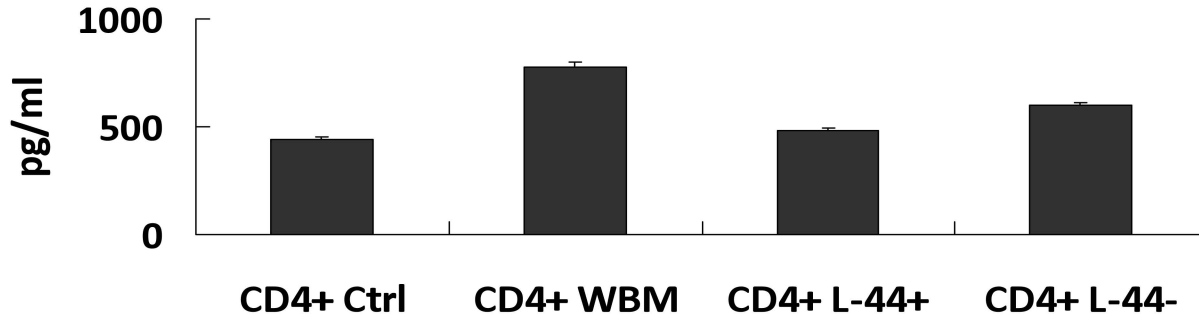


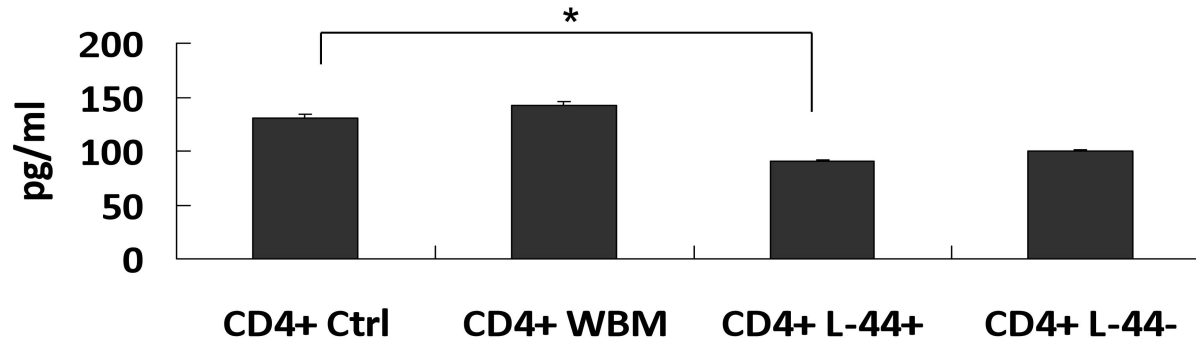
- 21.3% of single cells form CFU-F
  - Average 12.5 colonies out of 58.6 eligible wells.

<b>Subpopulation in WBM</b>	<b>1 m/o</b>	<b>6 m/o</b>	<b>12 m/o</b>	<b>18 m/o</b>	<b>28 m/o</b>
<b>Lin-CD44+Sca1-cKit+CD34- (%)</b>	<b>0.3</b>	<b>0.6</b>	<b>0.58</b>	<b>0.62</b>	<b>0.6</b>
<b>Lin-CD44+Sca1+cKit+ (%)</b>	<b>0.1</b>	<b>0.07</b>	<b>0.07</b>	<b>0.08</b>	<b>0.1</b>

### IL-17A ELISA



### IL-17F ELISA



\* p<0.05

### IL-17AF ELISA

