

Supplementary Figure S4

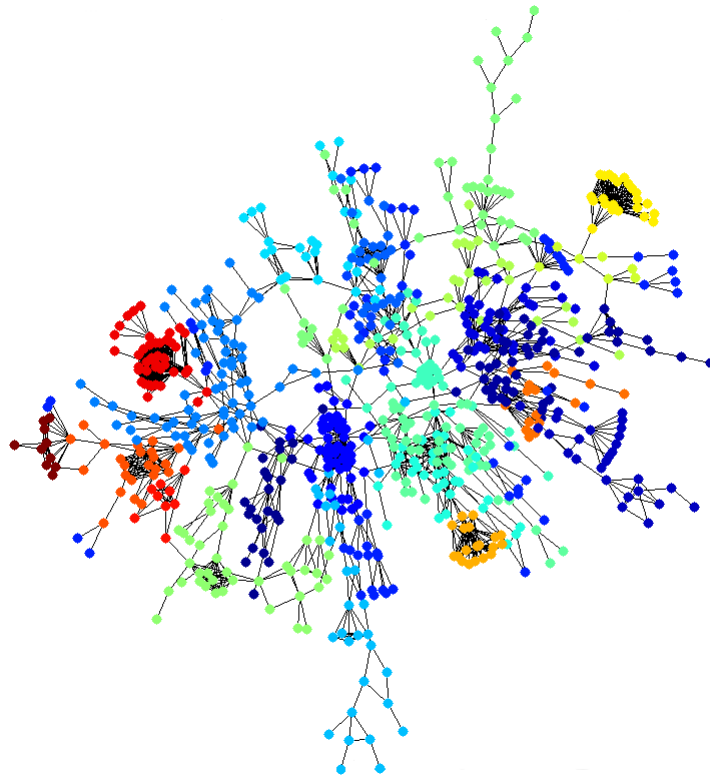


Figure S4: **Community structure in the largest connected component of the FYI network [1]**. The different colours correspond to different communities (25 in all). The graph modularity value for this partition is 0.8784. We generated this visualisation using the Kamada-Kawai algorithm [2].

References

- [1] Han JDJ, Bertin N, Hao T, Goldberg DS, Berriz GF, et al. (2004) Evidence for dynamically organized modularity in the yeast protein-protein interaction network. *Nature* 430: 88–93.
- [2] Kamada T, Kawai S (1989) An algorithm for drawing general undirected graphs. *Information Processing Letters* 31: 7–15.