

**Supplementary Figure S1.** Complementation experiments with the conditional *tyrS* mutant.

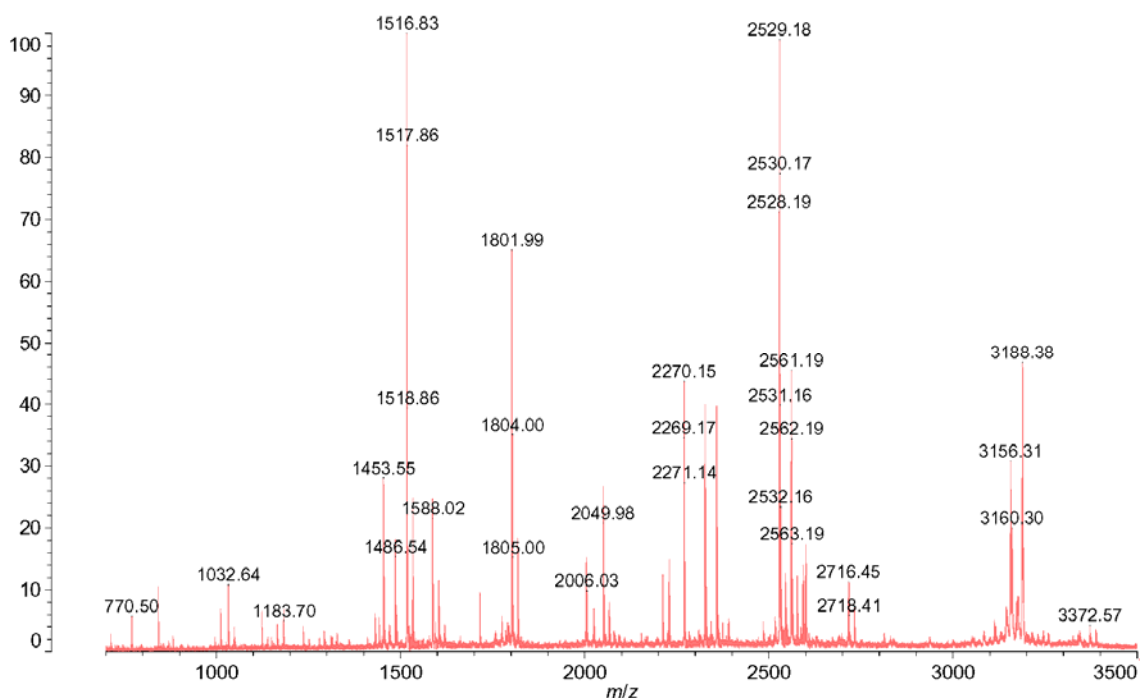
(A) The *tyrS* mutant cells were inoculated on LB plates containing 0.2% L-arabinose and 1% D-glucose.

(B) The *tyrS* mutant cells transformed with plasmids pACYC184, pAp102, pEcYS, and pApEcYS were inoculated on LB plates containing 0.2% L-arabinose and 1% D-glucose, each supplemented with the required antibiotics.

(C) The *tyrS* mutant cells transformed with plasmids pApMjYSYR and pApScYSYR were inoculated on an LB plate containing 1% D-glucose and the required antibiotic.

(D) The *tyrS* mutant cells transformed with the plasmid pairs pMjYS-pApMjYR, pScYS-pApScYR, pApMjYS-pMjYR, and pApScYS-pScYR were inoculated on LB plates containing 1% D-glucose and the required antibiotics.

The three sectors of each half plate represent dilutions of the cells.



**Supplementary Figure 2.** Mass spectrometric analysis of the peptides from the amber suppression product of *gst(Am25)* obtained from FB3 cells