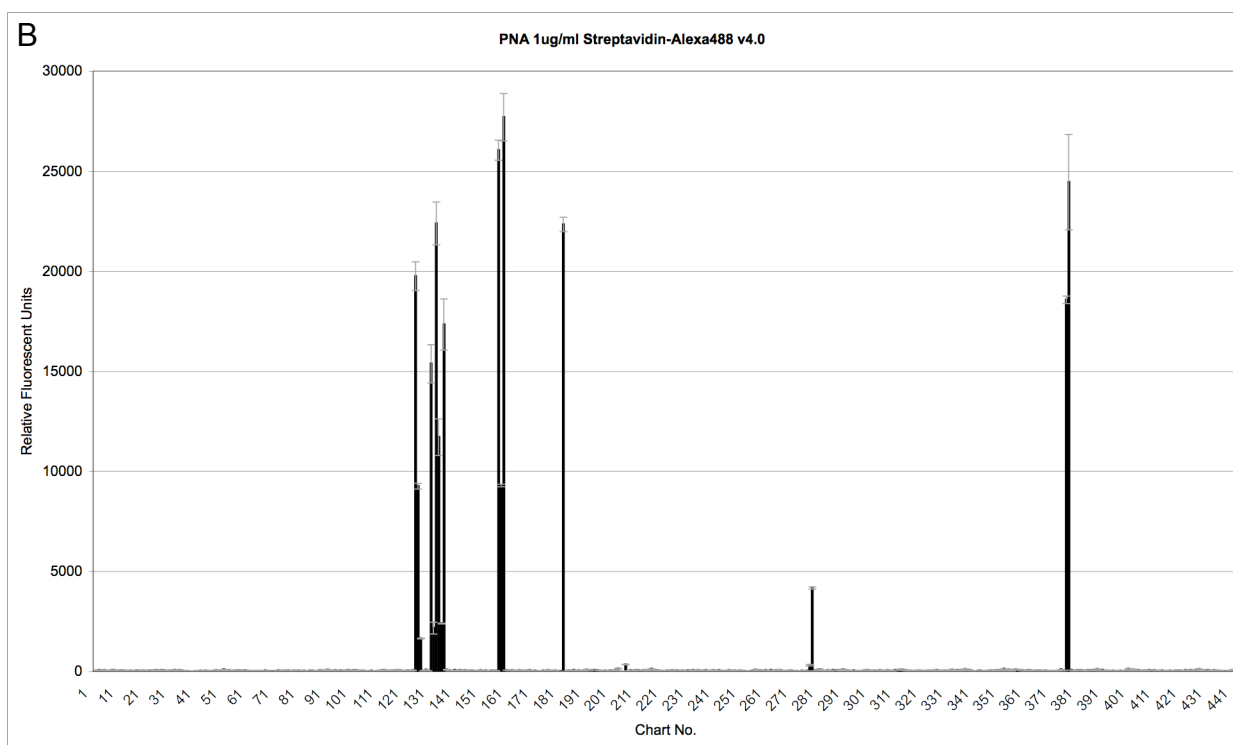
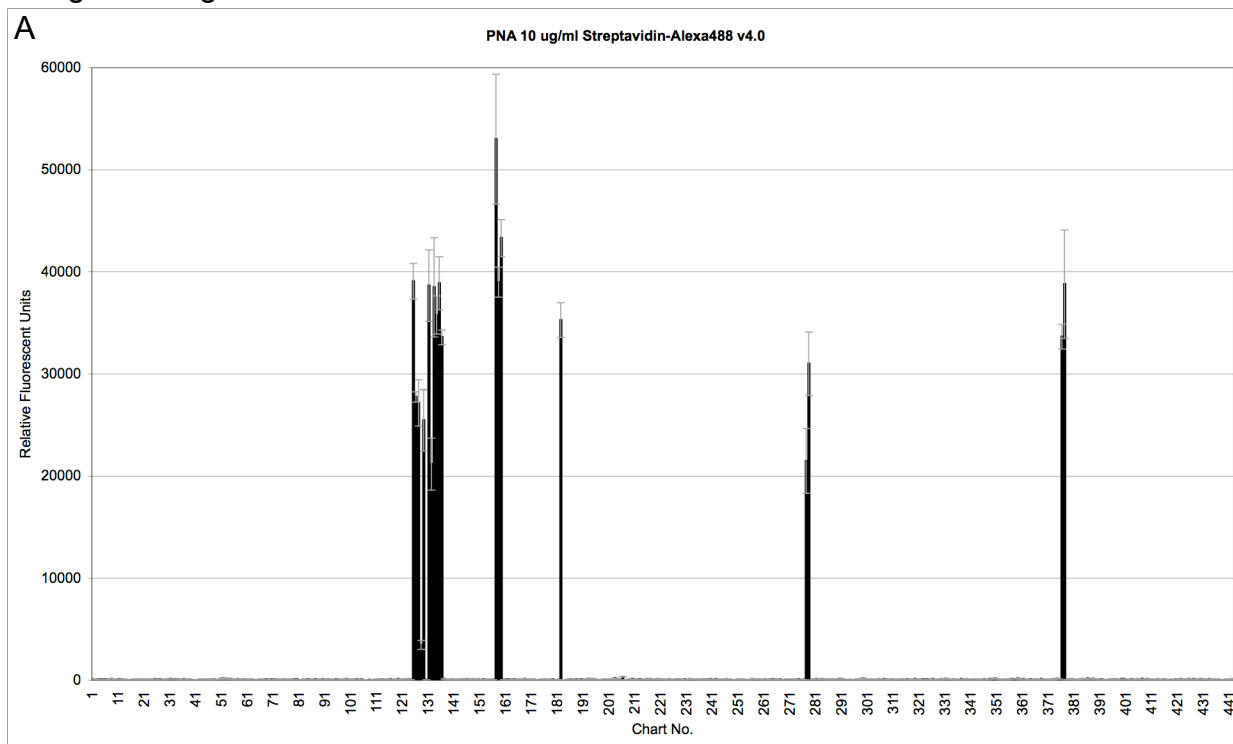


Wang et al. Figure S6



C

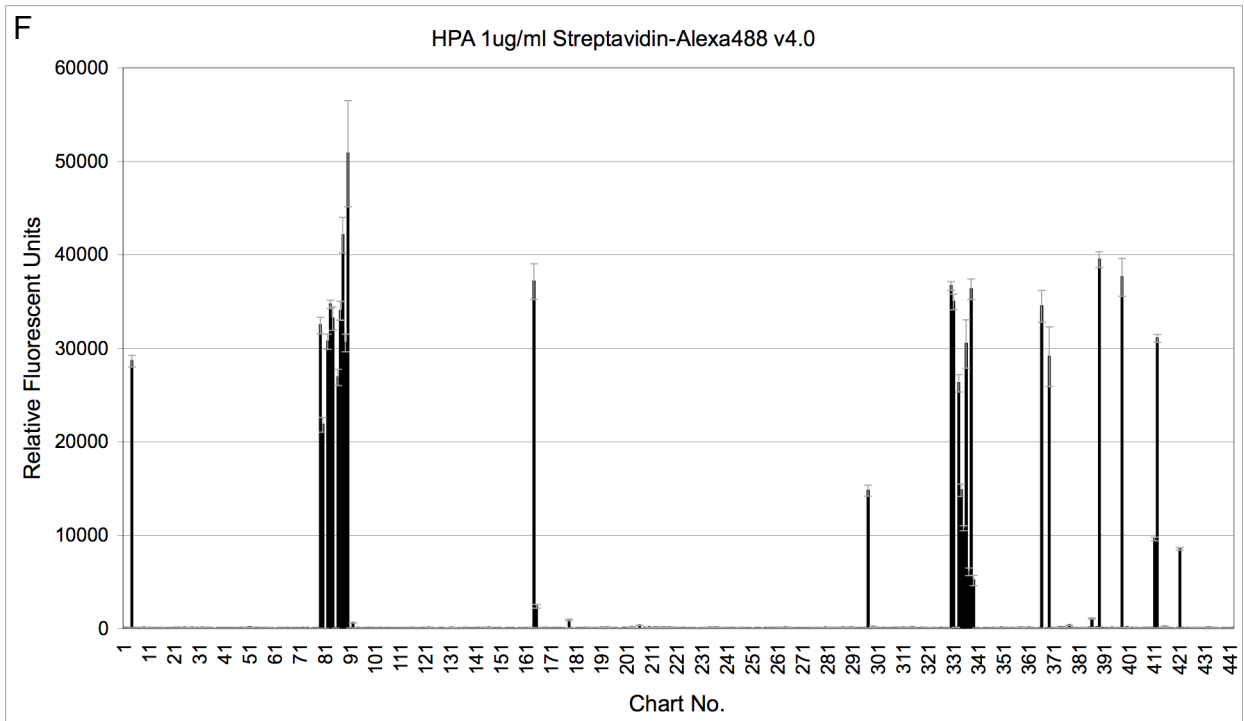
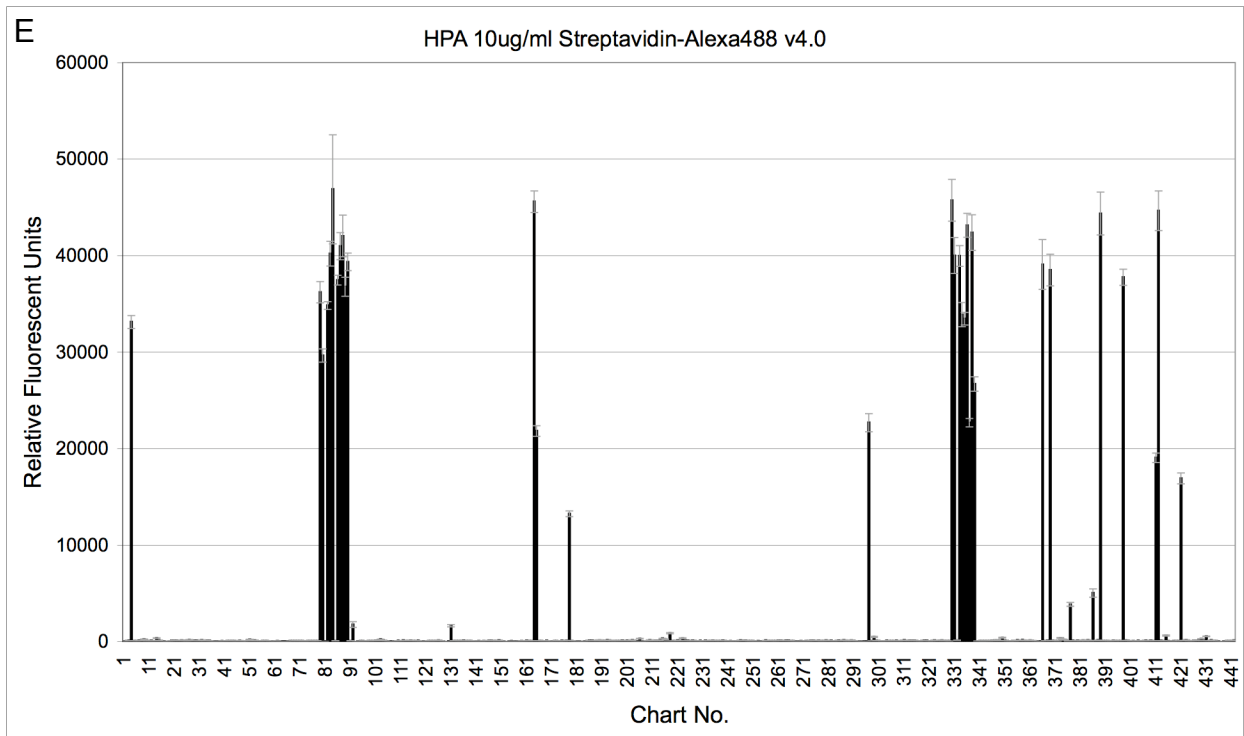
## PNA 10 ug/ml Streptavidin-Alexa488 v4.0

Chart Number	Structure	RFU	STDEV	SEM	%CV
157	Galb1-4GlcNAcb1-6( <b>Galb1-3</b> )GalNAca-Sp8	<b>52982</b>	12713	6356	24
159	<b>Galb1-3</b> (Galb1-4GlcNAcb1-6)GalNAc-Sp14	<b>43294</b>	3617	1809	8
125	<b>Galb1-3</b> (GlcNAcb1-6)GalNAca-Sp8	<b>39068</b>	3479	1739	9
158	<b>Galb1-3</b> (Galb1-4GlcNAcb1-6)GalNAca-Sp8	<b>38992</b>	2941	1470	8
135	<b>Galb1-3GalNAcb1-4</b> (Neu5Aca2-3)Galb1-4Glc-Sp0	<b>38861</b>	5200	2600	13
377	<b>Galb1-3GalNAca1-3</b> (Fuca1-2)Galb1-4GlcNAc-Sp0	<b>38795</b>	10613	5306	27
131	<b>Galb1-3GalNAca-Sp8</b>	<b>38639</b>	7020	3510	18
133	<b>Galb1-3GalNAcb-Sp8</b>	<b>38479</b>	9722	4861	25
134	<b>Galb1-3GalNAcb1-3Gala1-4Galb1-4Glc-Sp0</b>	<b>35763</b>	3735	1867	10
182	GlcNAcb1-6( <b>Galb1-3</b> )GalNAca-Sp8	<b>35262</b>	3403	1701	10
376	<b>Galb1-3GalNAca1-3</b> (Fuca1-2)Galb1-4Glc-Sp0	<b>33645</b>	2428	1214	7
136	<b>Galb1-3GalNAcb1-4Galb1-4Glc-Sp8</b>	<b>33579</b>	1428	714	4
278	<b>Galb1-3GalNAca-Sp14</b>	<b>30977</b>	6217	3109	20
126	<b>Galb1-3</b> (GlcNAcb1-6)GalNAc-Sp14	<b>27750</b>	1023	511	4
127	<b>Galb1-3</b> (Neu5Aca2-6)GalNAca-Sp8	<b>27165</b>	4547	2274	17
129	<b>Galb1-3</b> (Neu5Acb2-6)GalNAca-Sp8	<b>25462</b>	6000	3000	24
277	<b>Galb1-3</b> (Neu5Aca2-3Galb1-4GlcNAcb1-6)GalNAca-Sp14	<b>21482</b>	6348	3174	30
132	<b>Galb1-3GalNAca-Sp16</b>	<b>21154</b>	5070	2535	24
128	<b>Galb1-3</b> (Neu5Aca2-6)GalNAca-Sp14	<b>3453</b>	881	441	26
206	Mana1-6(Mana1-3)Mana1-6[Mana1-2Mana1-3]Manb1-4GlcNAcb1-4GlcNAcb-Sp12	317	34	17	11
203	Mana1-2Mana1-2Mana1-3(Mana1-2Mana1-3(Mana1-2Mana1-6)Mana1-6)Manb1-4GlcNAcb1-4GlcNAcb-Sp12	195	30	15	16
51	Neu5Aca2-6Galb1-4GlcNAcb1-2Mana1-3(Neu5Aca2-6Galb1-4GlcNAcb1-2Mana1-6)Manb1-4GlcNAcb1-4GlcNAcb-N(LT)AVL	195	47	24	24
350	Galb1-3(Fuca1-4)GlcNAcb1-2Mana1-3(Galb1-3(Fuca1-4)GlcNAcb1-2Mana1-6)Manb1-4GlcNAcb1-4GlcNAcb-Sp19	181	56	28	31
52	Neu5Aca2-6Galb1-4GlcNAcb1-2Mana1-3(Neu5Aca2-6Galb1-4GlcNAcb1-2Mana1-6)Manb1-4GlcNAcb1-4GlcNAcb-Sp8	176	68	34	39
386	Fuca1-2Galb1-3GalNAca1-3(Fuca1-2)Galb1-4GlcNAcb-Sp0	169	13	7	8
299	GlcAb1-3GlcNAcb-Sp8	167	36	18	21
359	Gala1-3Galb1-4GlcNAcb1-2Mana1-3(Gala1-3Galb1-4GlcNAcb1-2Mana1-6)Manb1-4GlcNAcb1-4GlcNAcb-Sp20	156	31	16	20

## D

## PNA 1ug/ml Streptavidin-Alexa488 v4.0

Chart Number	Structure	RFU	STDEV	SEM	%CV
159	<b>Galb1-3(Galb1-4GlcNAcb1-6)GalNAc</b> -Sp14	<b>27697</b>	2377	1188	9
157	Galb1-4GlcNAcb1-6( <b>Galb1-3</b> )GalNAca-Sp8	<b>26049</b>	1001	501	4
377	<b>Galb1-3GalNAca</b> 1-3(Fuca1-2)Galb1-4GlcNAc-Sp0	<b>24450</b>	4764	2382	19
133	<b>Galb1-3GalNAcb</b> -Sp8	<b>22386</b>	2148	1074	10
182	GlcNAcb1-6( <b>Galb1-3</b> )GalNAca-Sp8	<b>22337</b>	719	359	3
125	<b>Galb1-3(GlcNAcb1-6)GalNAca</b> -Sp8	<b>19750</b>	1436	718	7
376	<b>Galb1-3GalNAca</b> 1-3(Fuca1-2)Galb1-4Glc-Sp0	<b>18571</b>	378	189	2
136	<b>Galb1-3GalNAcb</b> 1-4Galb1-4Glc-Sp8	<b>17332</b>	2563	1282	15
131	<b>Galb1-3GalNAca</b> -Sp8	<b>15376</b>	1909	954	12
134	<b>Galb1-3GalNAcb</b> 1-3Gala1-4Galb1-4Glc-Sp0	<b>11714</b>	1826	913	16
158	<b>Galb1-3(Galb1-4GlcNAcb1-6)GalNAca</b> -Sp8	<b>9299</b>	127	63	1
126	<b>Galb1-3(GlcNAcb1-6)GalNAc</b> -Sp14	<b>9253</b>	291	145	3
278	<b>Galb1-3GalNAca</b> -Sp14	<b>4169</b>	104	52	2
135	<b>Galb1-3GalNAcb</b> 1-4(Neu5Aca2-3)Galb1-4Glc-Sp0	<b>2398</b>	43	21	2
132	<b>Galb1-3GalNAca</b> -Sp16	<b>2165</b>	596	298	28
127	<b>Galb1-3(Neu5Aca2-6)GalNAca</b> -Sp8	<b>1648</b>	36	18	2
206	Mana1-6(Mana1-3)Mana1-6[Mana1-2Mana1-3]Manb1-4GlcNAcb1-4GlcNAcb-Sp12	347	26	13	7
277	<b>Galb1-3(Neu5Aca2-3Galb1-4GlcNAcb1-6)GalNAca</b> -Sp14	<b>315</b>	71	35	22
203	Mana1-2Mana1-2Mana1-3(Mana1-2Mana1-3(Mana1-2Mana1-6)Mana1-6)Manb1-4GlcNAcb1-4GlcNAcb-Sp12	137	30	15	22
216	Neu5Aca2-8Neu5Aca2-8Neu5Aca2-3(GalNAcb1-4)Galb1-4Glc-Sp0	125	21	11	17
352	KDNA2-3Galb1-4(Fuca1-3)GlcNAc-Sp0	123	27	13	22
400	Gala1-4Galb1-4GlcNacb1-2Mana1-3(Gala1-4Galb1-4GlcNacb1-2Mana1-6)Manb1-4GlcNacb1-4GlcNacb-LVaNKT	122	45	22	36
427	Galb1-4GlcNAcb1-3Galb1-4(Fuca1-3GlcNAcb1-6)Galb1-4Glc-Sp21	121	19	10	16
388	Neu5Aca2-3(GalNAcb1-4)Galb1-4GlcNAcb1-3GalNAca-Sp14	121	22	11	18
337	GlcNAca1-4Galb1-4GlcNAcb1-3Galb1-4(Fuca1-3)GlcNAcb1-3Galb1-4(Fuca1-3)GlcNAcb-Sp0	116	33	16	28
281	Galb1-4(Fuca1-3)[6OSO3]Glc-Sp0	107	30	15	28



## G

## HPA 10ug/ml Streptavidin-Alexa488 v4.0

Chart Number	Structure	RFU	STDEV	SEM	%CV
84	<b>GalNAca1-3(Fuca1-2)Galb1-4Glc</b> -Sp0	<b>46874</b>	11300	5650	24
330	<b>GalNAca1-3(Fuca1-2)Galb1-4GlcNAcb1-3Galb1-4GlcNAcb</b> -Sp0	<b>45727</b>	4333	2166	9
164	GlcNAca1-3Galb1-4GlcNAcb-Sp8	45585	2246	1123	5
412	<b>GalNAca1-3GalNAcb1-3Gala1-4Galb1-4Glc</b> -Sp0	<b>44643</b>	4133	2066	9
389	<b>GalNAca1-3(Fuca1-2)Galb1-3GalNAca1-3(Fuca1-2)Galb1-4GlcNAcb</b> -Sp0	<b>44350</b>	4444	2222	10
336	GlcNAca1-4Galb1-4GlcNAcb1-3Galb1-4Glc-Sp0	43136	2500	1250	6
338	GlcNAca1-4Galb1-4GlcNAcb1-3Galb1-4GlcNAcb-Sp0	42373	3719	1860	9
88	<b>GalNAca1-3GalNAcb</b> -Sp8	<b>42022</b>	4320	2160	10
87	<b>GalNAca1-3(Fuca1-2)Galb</b> -Sp18	<b>40981</b>	2808	1404	7
83	<b>GalNAca1-3(Fuca1-2)Galb1-4GlcNAcb</b> -Sp8	<b>40207</b>	2566	1283	6
331	<b>GalNAca1-3(Fuca1-2)Galb1-4GlcNAcb1-3Galb1-4GlcNAcb1-3Galb1-4GlcNAcb</b> -Sp0	<b>39999</b>	3714	1857	9
333	GlcNAca1-4Galb1-4GlcNAcb1-3Galb1-4GlcNAcb1-3Galb1-4GlcNAcb-Sp0	39971	2141	1071	5
90	<b>GalNAca1-4(Fuca1-2)Galb1-4GlcNAcb</b> -Sp8	<b>39342</b>	1815	907	5
366	<b>GalNAca1-3(Fuca1-2)Galb1-4GlcNAcb1-2Mana1-3(GalNAca1-3(Fuca1-2)Galb1-4GlcNAcb1-2Mana1-6)Manb1-4GlcNAcb1-4GlcNAcb</b> -Sp20	<b>39069</b>	5163	2582	13
369	<b>GalNAca1-3(Fuca1-2)Galb1-3GlcNAcb1-2Mana1-3(GalNAca1-3(Fuca1-2)Galb1-3GlcNAcb1-2Mana1-6)Manb1-4GlcNAcb1-4GlcNAcb</b> -Sp20	<b>38504</b>	3274	1637	9
398	<b>GalNaca1-3GalNacb1-3Gala1-4Galb1-4GlcNacb</b> -Sp0	<b>37753</b>	1671	836	4
86	<b>GalNAca1-3(Fuca1-2)Galb</b> -Sp8	<b>37447</b>	1003	502	3
89	<b>GalNAca1-3Galb</b> -Sp8	<b>36762</b>	1983	992	5
79	<b>GalNAca1-3(Fuca1-2)Galb1-3GlcNAcb</b> -Sp0	<b>36193</b>	2217	1109	6
82	<b>GalNAca1-3(Fuca1-2)Galb1-4GlcNAcb</b> -Sp0	<b>34825</b>	797	399	2
334	GlcNAca1-4Galb1-4GlcNAcb-Sp0	33868	2513	1257	7
335	GlcNAca1-4Galb1-3GlcNAcb-Sp0	33455	1315	658	4
4	<b>GalNAca</b> -Sp8	<b>33124</b>	1335	667	4
80	<b>GalNAca1-3(Fuca1-2)Galb1-4(Fuca1-3)GlcNAcb</b> -Sp0	<b>29650</b>	1361	680	5
339	GlcNAca1-4Galb1-3GalNAc-Sp14	26687	1498	749	6
297	<b>GalNAca</b> -Sp15	<b>22682</b>	1899	949	8
337	GlcNAca1-4Galb1-4GlcNAcb1-3Galb1-4(Fuca1-3)GlcNAcb1-3Galb1-4(Fuca1-3)GlcNAcb-Sp0	22679	870	435	4
165	GlcNAca1-6Galb1-4GlcNAcb-Sp8	21820	1098	549	5
411	<b>GalNAca1-3(Fuca1-2)Galb1-4GlcNAcb1-3GalNAca</b> -Sp14	<b>19043</b>	972	486	5
421	<b>GalNAca1-3(Fuca1-2)Galb1-3GlcNAcb1-3GalNAc</b> -Sp14	<b>16913</b>	1119	560	7
178	GlcNAcb1-4Galb1-4GlcNAcb-Sp8	13240	608	304	5
386	Fuca1-2Galb1-3 <b>GalNAca1-3(Fuca1-2)Galb1-4GlcNAcb</b> -Sp0	5026	859	429	17
377	Galb1-3 <b>GalNAca1-3(Fuca1-2)Galb1-4GlcNAc</b> -Sp0	3858	403	201	10
92	<b>GalNAcb1-3(Fuca1-2)Galb</b> -Sp8	<b>1760</b>	581	290	33
131	Galb1-3 <b>GalNAca</b> -Sp8	1644	245	122	15
218	Neu5Aca2-8Neu5Aca2-3( <b>GalNAcb1-4</b> )Galb1-4Glc-Sp0	862	110	55	13
415	<b>GalNAca1-3(Fuca1-2)Galb1-4(Fuca1-3)GlcNAcb1-3GalNAc</b> -Sp14	614	121	60	20
431	GlcNAcb1-4(GlcNAcb1-2)Mana1-3(GlcNAcb1-4)(GlcNAcb1-6(GlcNAcb1-2)Mana1-6)Manb1-4GlcNAcb1-4GlcNAc-Sp21	530	46	23	9
299	GlcAb1-3GlcNAcb-Sp8	474	112	56	24
350	Galb1-3(Fuca1-4)GlcNAcb1-2Mana1-3(Galb1-3(Fuca1-4)GlcNAcb1-2Mana1-6)Manb1-4GlcNAcb1-4GlcNAcb-Sp19	402	65	32	16
373	Neu5Aca2-6Galb1-4GlcNAcb1-3GalNAc-Sp14	372	72	36	19

## H

## HPA 1ug/ml Streptavidin-Alexa488 v4.0

Chart Number	Structure	RFU	STDEV	SEM	%CV
90	<b>GalNAca1-4(Fuca1-2)Galb1-4GlcNAcb-Sp8</b>	<b>50800</b>	11368	5684	22
88	<b>GalNAca1-3GalNAcb-Sp8</b>	<b>42082</b>	3796	1898	9
389	<b>GalNAca1-3(Fuca1-2)Galb1-3GalNAca1-3(Fuca1-2)Galb1-4GlcNAcb-Sp0</b>	<b>39470</b>	1701	851	4
398	<b>GalNAca1-3GalNAcb1-3Gala1-4Galb1-4GlcNAcb-Sp0</b>	<b>37567</b>	4058	2029	11
164	GlcNAca1-3Galb1-4GlcNAcb-Sp8	37107	3810	1905	10
330	<b>GalNAca1-3(Fuca1-2)Galb1-4GlcNAcb1-3Galb1-4GlcNAcb-Sp0</b>	<b>36634</b>	941	470	3
338	GlcNAca1-4Galb1-4GlcNAcb1-3Galb1-4GlcNAcb-Sp0	36301	2183	1092	6
331	<b>GalNAca1-3(Fuca1-2)Galb1-4GlcNAcb1-3Galb1-4GlcNAcb1-3Galb1-4GlcNAcb-Sp0</b>	<b>34934</b>	1680	840	5
83	<b>GalNAca1-3(Fuca1-2)Galb1-4GlcNAcb-Sp8</b>	<b>34678</b>	930	465	3
366	<b>GalNAca1-3(Fuca1-2)Galb1-4GlcNAcb1-2Mana1-3(GalNAca1-3(Fuca1-2)Galb1-4GlcNAcb1-2Mana1-6)Manb1-4GlcNAcb1-4GlcNAcb-Sp20</b>	<b>34486</b>	3394	1697	10
87	<b>GalNAca1-3(Fuca1-2)Galb-Sp18</b>	<b>33984</b>	2060	1030	6
84	<b>GalNAca1-3(Fuca1-2)Galb1-4Glc-Sp0</b>	<b>33162</b>	2516	1258	8
79	<b>GalNAca1-3(Fuca1-2)Galb1-3GlcNAcb-Sp0</b>	<b>32424</b>	1775	888	5
412	<b>GalNAca1-3GalNAcb1-3Gala1-4Galb1-4Glc-Sp0</b>	<b>31037</b>	852	426	3
82	<b>GalNAca1-3(Fuca1-2)Galb1-4GlcNAcb-Sp0</b>	<b>30662</b>	1628	814	5
89	<b>GalNAca1-3Galb-Sp8</b>	<b>30550</b>	1879	940	6
336	GlcNAca1-4Galb1-4GlcNAcb1-3Galb1-4Glc-Sp0	30442	5181	2591	17
369	<b>GalNAca1-3(Fuca1-2)Galb1-3GlcNAcb1-2Mana1-3(GalNAca1-3(Fuca1-2)Galb1-3GlcNAcb1-2Mana1-6)Manb1-4GlcNAcb1-4GlcNAcb-Sp20</b>	<b>29066</b>	6404	3202	22
4	<b>GalNAca-Sp8</b>	<b>28606</b>	1258	629	4
86	<b>GalNAca1-3(Fuca1-2)Galb-Sp8</b>	<b>26865</b>	1722	861	6
333	GlcNAca1-4Galb1-4GlcNAcb1-3Galb1-4GlcNAcb1-3Galb1-4GlcNAcb-Sp0	26234	1850	925	7
80	<b>GalNAca1-3(Fuca1-2)Galb1-4(Fuca1-3)GlcNAcb-Sp0</b>	<b>21782</b>	1581	790	7
334	GlcNAca1-4Galb1-4GlcNAcb-Sp0	14776	1316	658	9
297	<b>GalNAca-Sp15</b>	<b>14740</b>	1140	570	8
335	GlcNAca1-4Galb1-3GlcNAcb-Sp0	10718	533	267	5
411	<b>GalNAca1-3(Fuca1-2)Galb1-4GlcNAcb1-3GalNAca-Sp14</b>	<b>9571</b>	381	190	4
421	<b>GalNAca1-3(Fuca1-2)Galb1-3GlcNAcb1-3GalNAc-Sp14</b>	<b>8535</b>	286	143	3
337	GlcNAca1-4Galb1-4GlcNAcb1-3Galb1-4(Fuca1-3)GlcNAcb1-3Galb1-4(Fuca1-3)GlcNAcb-Sp0	6068	826	413	14
339	GlcNAca1-4Galb1-3 <b>GalNAc</b> -Sp14	5136	1110	555	22
165	GlcNAca1-6Galb1-4GlcNAcb-Sp8	2363	416	208	18
386	Fuca1-2Galb1-3 <b>GalNAca</b> 1-3(Fuca1-2)Galb1-4GlcNAcb-Sp0	1065	112	56	10
178	GlcNAcb1-4Galb1-4GlcNAcb-Sp8	900	187	93	21
92	<b>GalNAcb1-3(Fuca1-2)Galb-Sp8</b>	604	71	35	12
377	Galb1-3 <b>GalNAca</b> 1-3(Fuca1-2)Galb1-4GlcNAc-Sp0	331	38	19	11
206	Mana1-6(Mana1-3)Mana1-6[Mana1-2Mana1-3]Manb1-4GlcNAcb1-4GlcNAcb-Sp12	325	42	21	13
415	<b>GalNAca1-3(Fuca1-2)Galb1-4(Fuca1-3)GlcNAcb1-3GalNAc-Sp14</b>	221	38	19	17
299	GlcAb1-3GlcNAcb-Sp8	187	62	31	33
203	Mana1-2Mana1-2Mana1-3(Mana1-2Mana1-3(Mana1-2Mana1-6)Mana1-6)Manb1-4GlcNAcb1-4GlcNAcb-Sp12	162	40	20	25