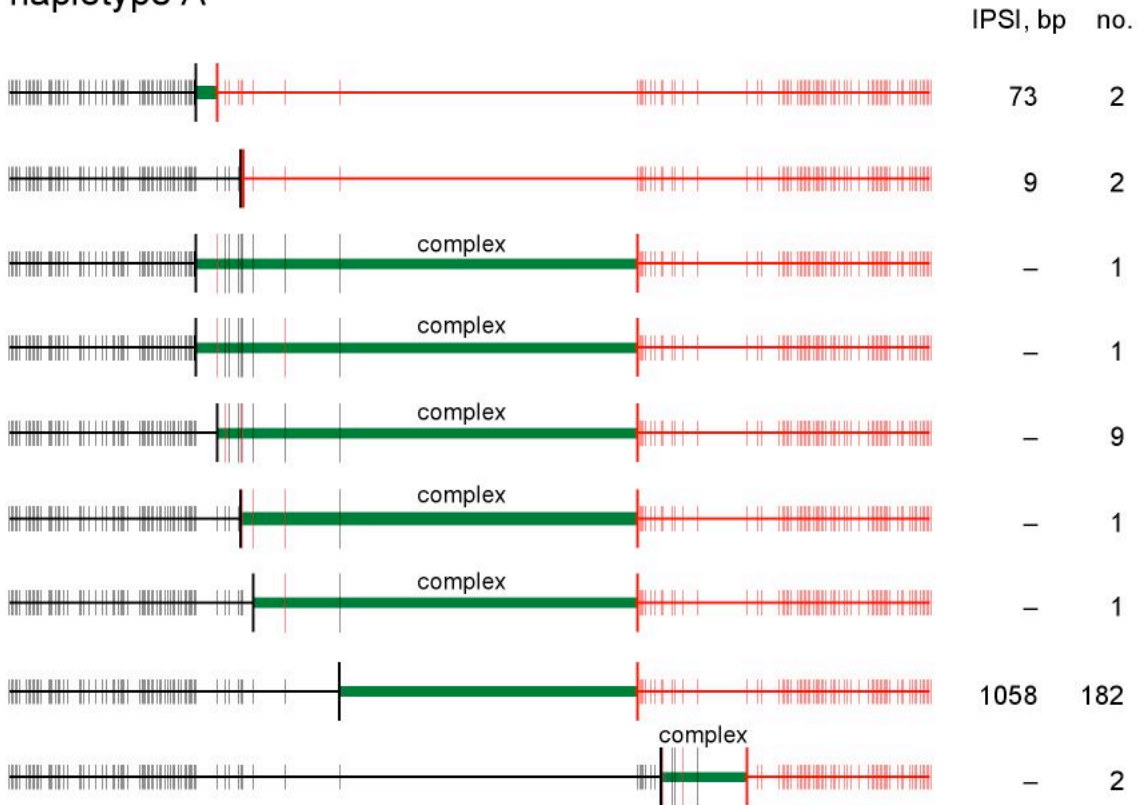


Fig. S2

man 1 sperm deletions 14,400,000 molecules screened

haplotype A



haplotype B

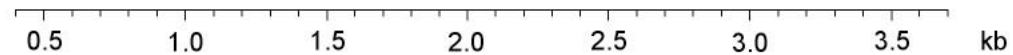
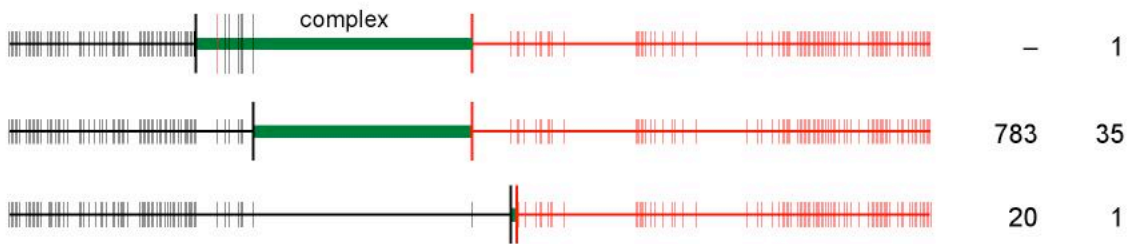


Fig. S2 (cont.)

man 1 sperm duplications 15,600,000 molecules screened

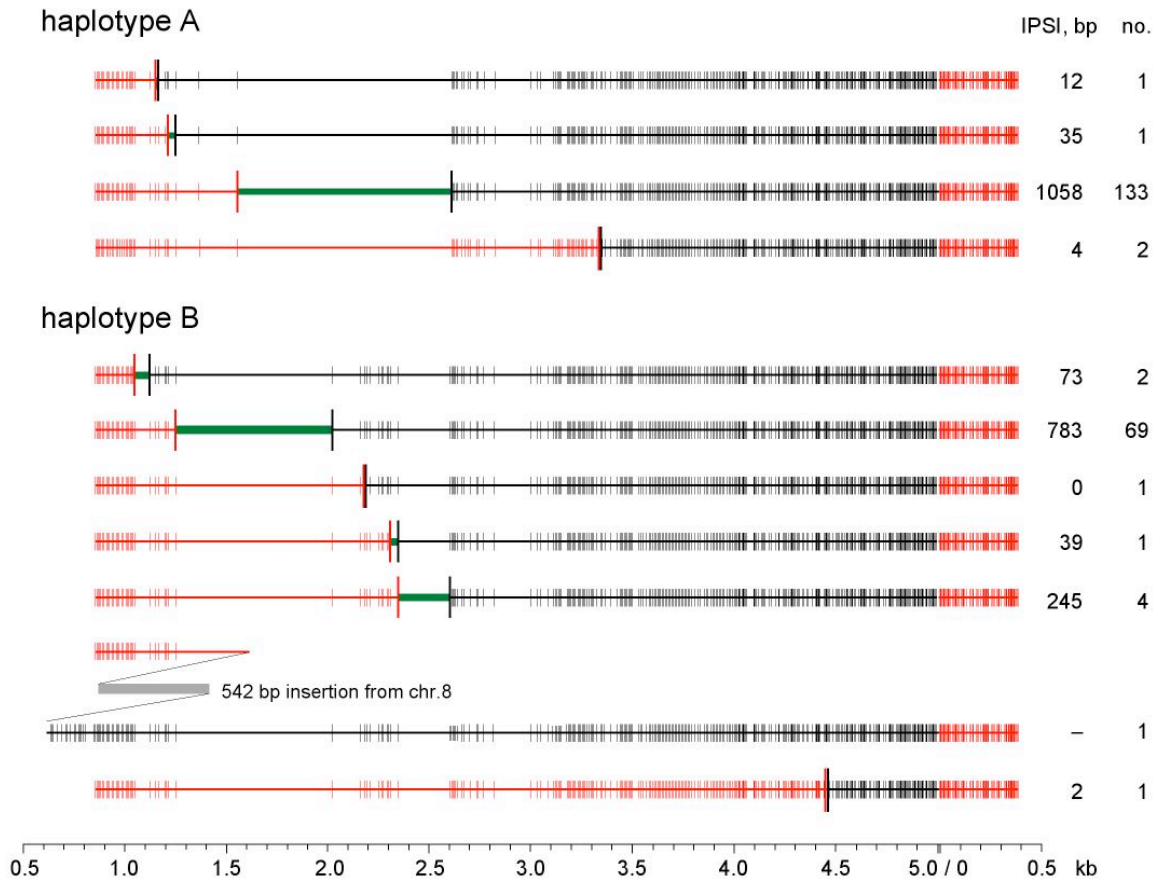


Fig. S2 (cont.)

man 2 sperm deletions 32,700,000 molecules screened

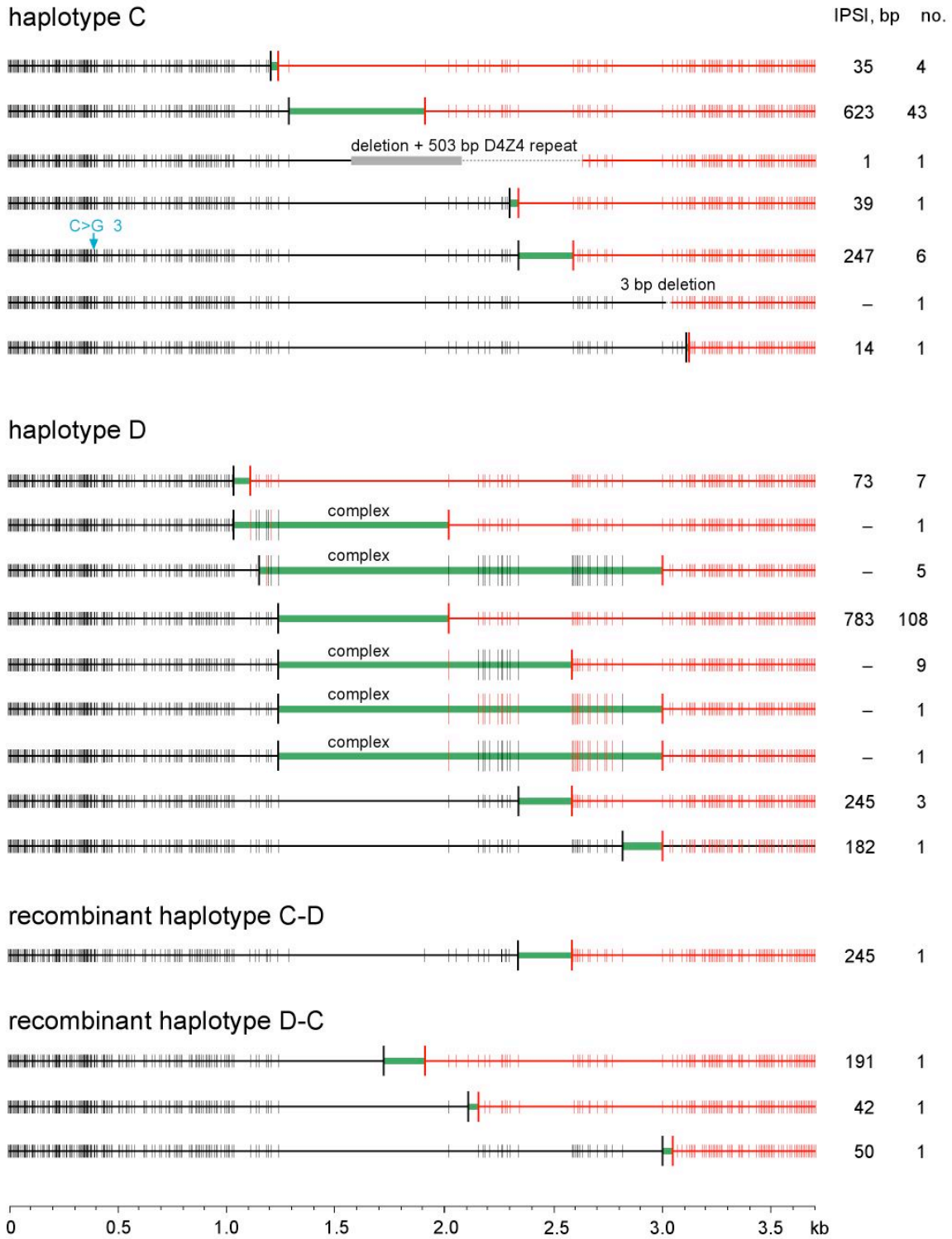


Fig. S2 (cont.)

man 2 sperm duplications 12,500,000 molecules screened

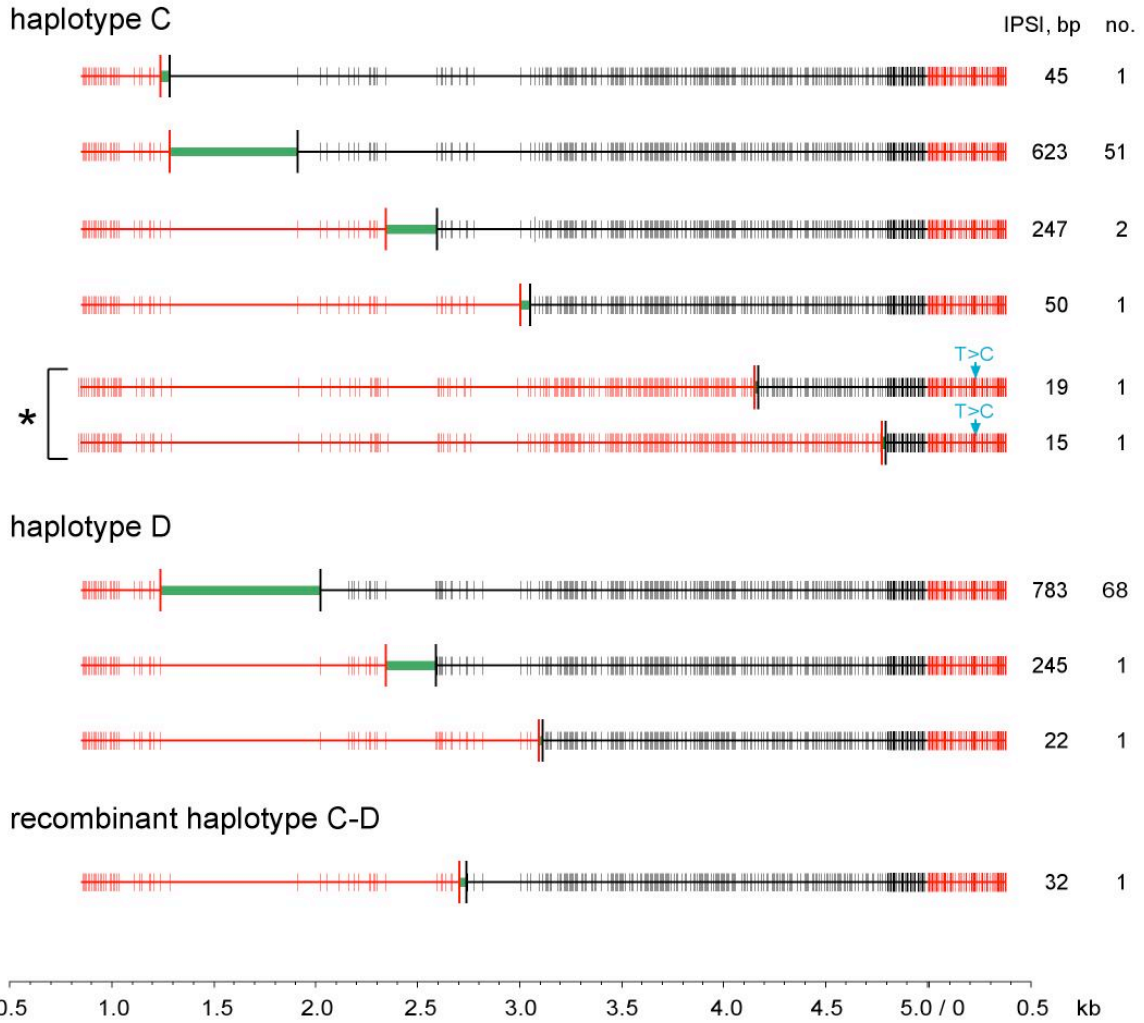


Fig. S2 (cont.)

man 3 deletions

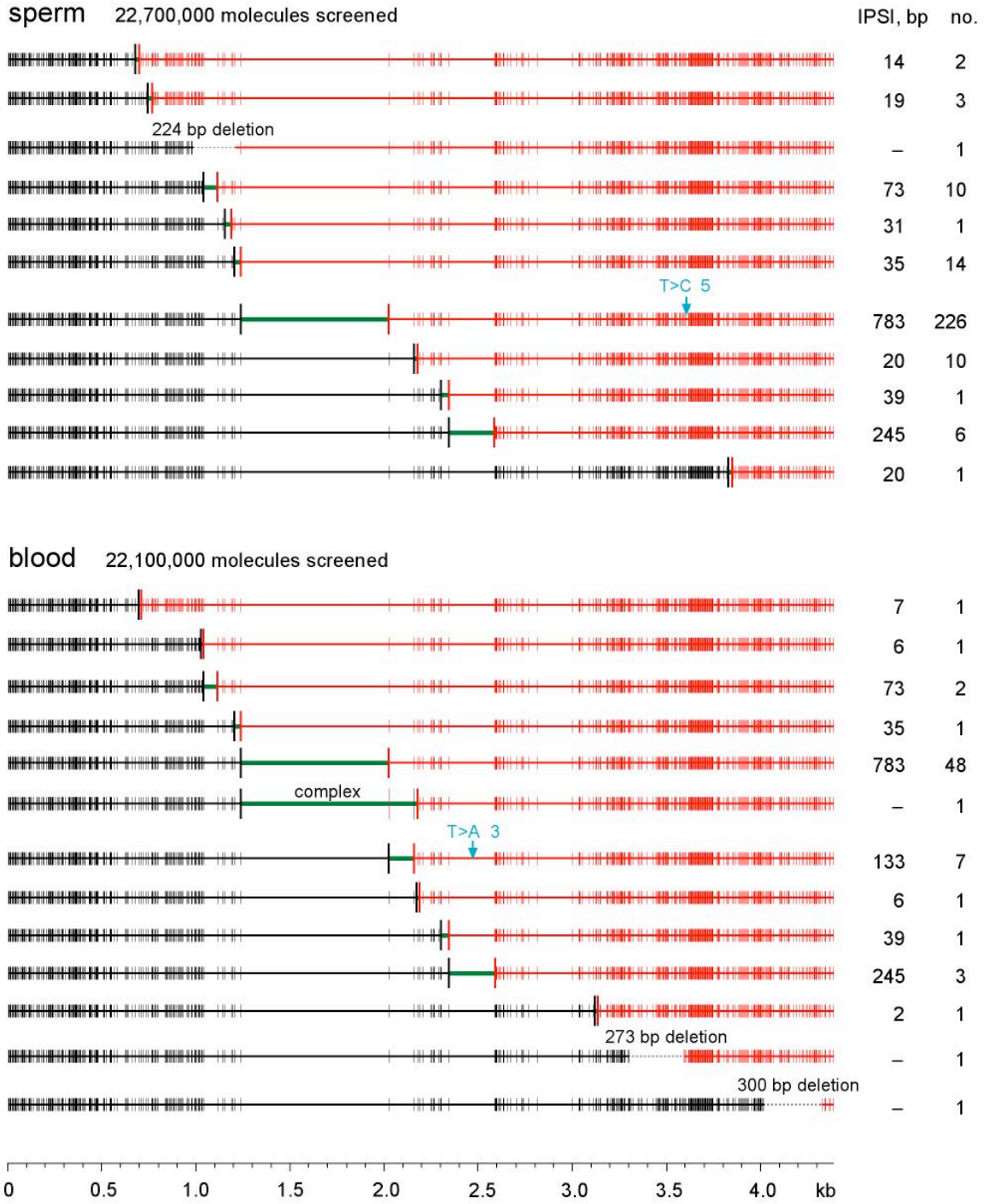
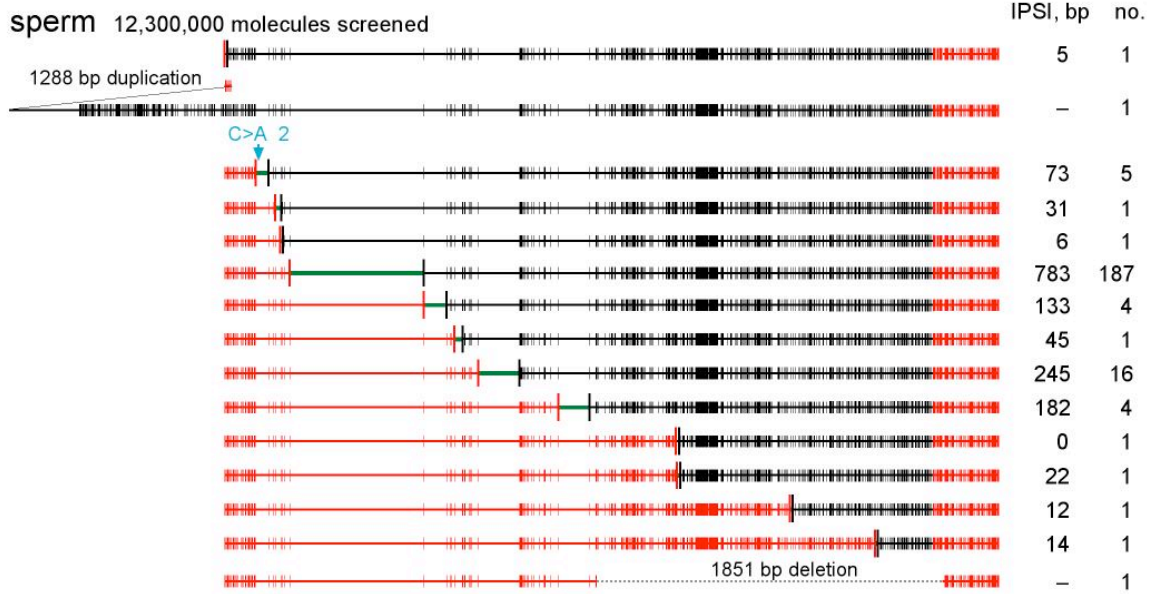


Fig. S2 (cont.)

man 3 duplications



blood 19,500,000 molecules screened

