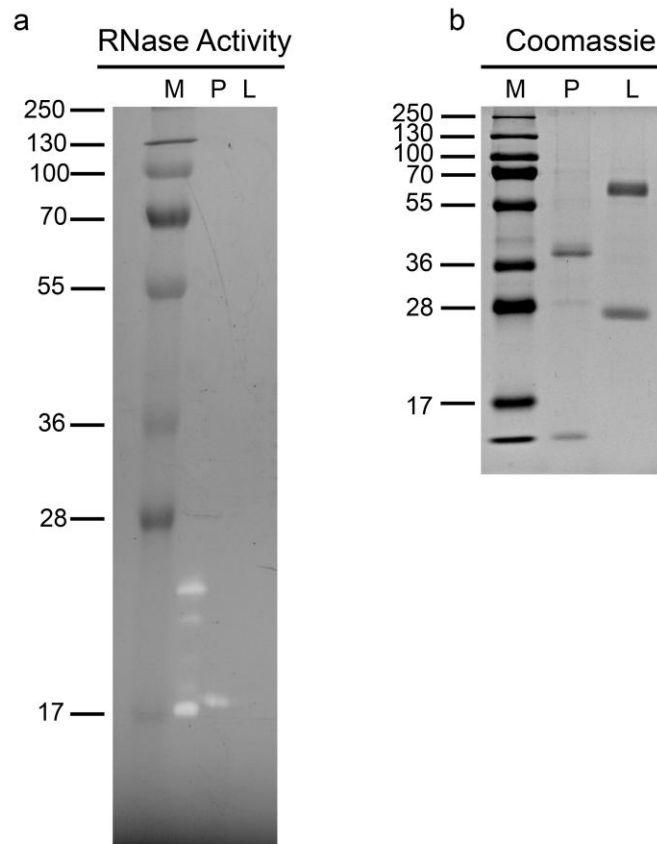


Petunia nectar proteins have ribonuclease activity

Melissa S. Hillwig, Xiaoteng Liu, Guangyu Liu, Robert W. Thornburg, and Gustavo C. MacIntosh

Supplemental Figure 2.



Ribonuclease activities are present in nectar. **a.** Aliquots (5 μ g) of raw nectar from *Petunia hybrida* and ornamental tobacco (*Nicotiana langsdorffii* x *Nicotiana sanderae* var LxS8) were analyzed in an *in gel* RNase activity assay. P, petunia; L, LxS8. Size (kDa) of molecular weight markers (M) is indicated. **b.** Same samples as in **a**, analyzed by SDS-PAGE, and stained with Coomassie Blue. Gels are representative of at least 3 independent experiments.