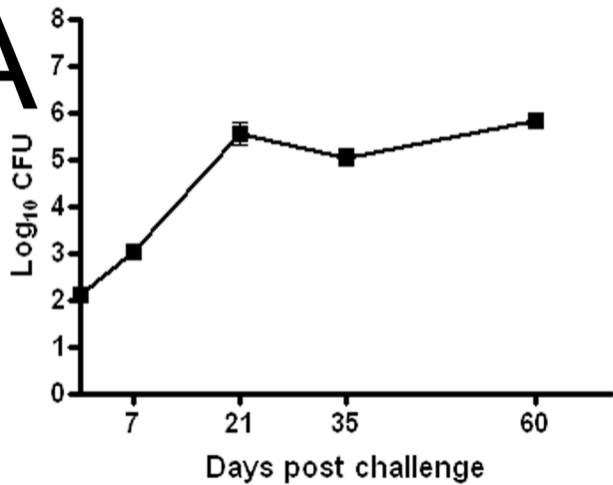
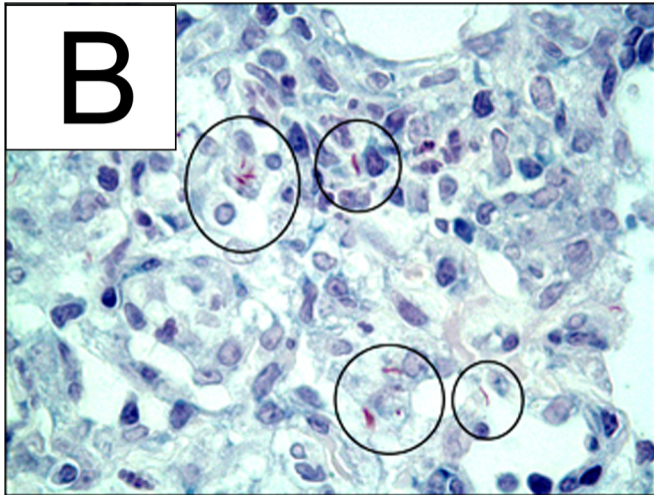
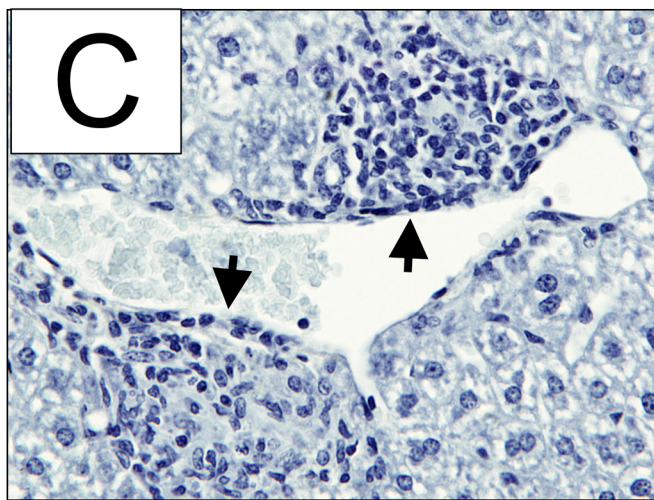
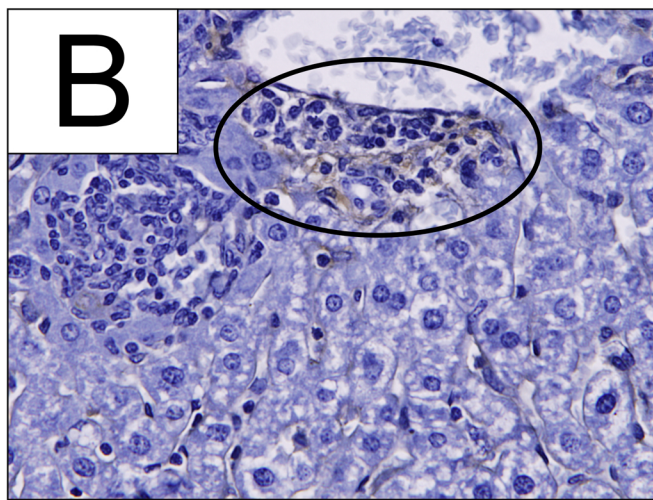
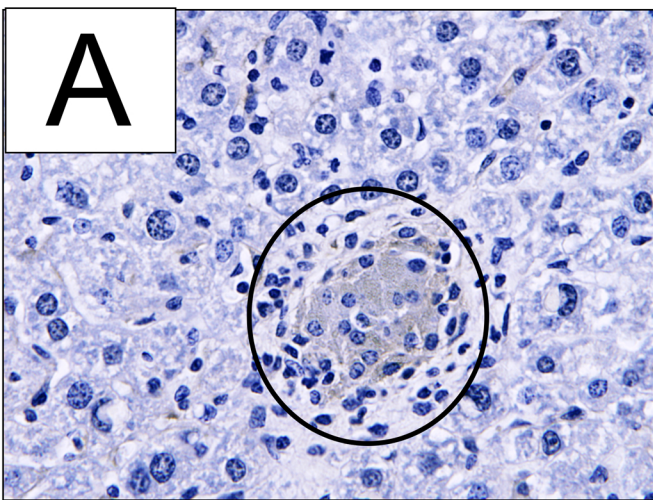


**A****B**

**Supplemental Figure 1. Pulmonary effects of *M. tuberculosis* aerosolization into C57BL/6 mice.** (A) Pulmonary *M. tuberculosis* CFUs increase by day 21 after infection and remain present at a high level through day 60 (n = 3). (B) Acid fast staining (pink) shows *M. tuberculosis* within pulmonary macrophages 60 days after infection (black circles).



**Supplemental Figure 2. Hepatic effects of *M. tuberculosis* infection in C57BL/6 mice.**

Sixty days after infection hepatic macrophages stain positively for (A) F480 and (B) mannose receptor. Lymphocytic deposits (C; black arrows) localize around large vessels.

Final magnification 400X.