

Fig1. Western blotting analysis.

All cell lines were tested and authenticated for the ER, PR and Her2 status by western-blot. β -actin blot was included for loading control.

Supplementary Data

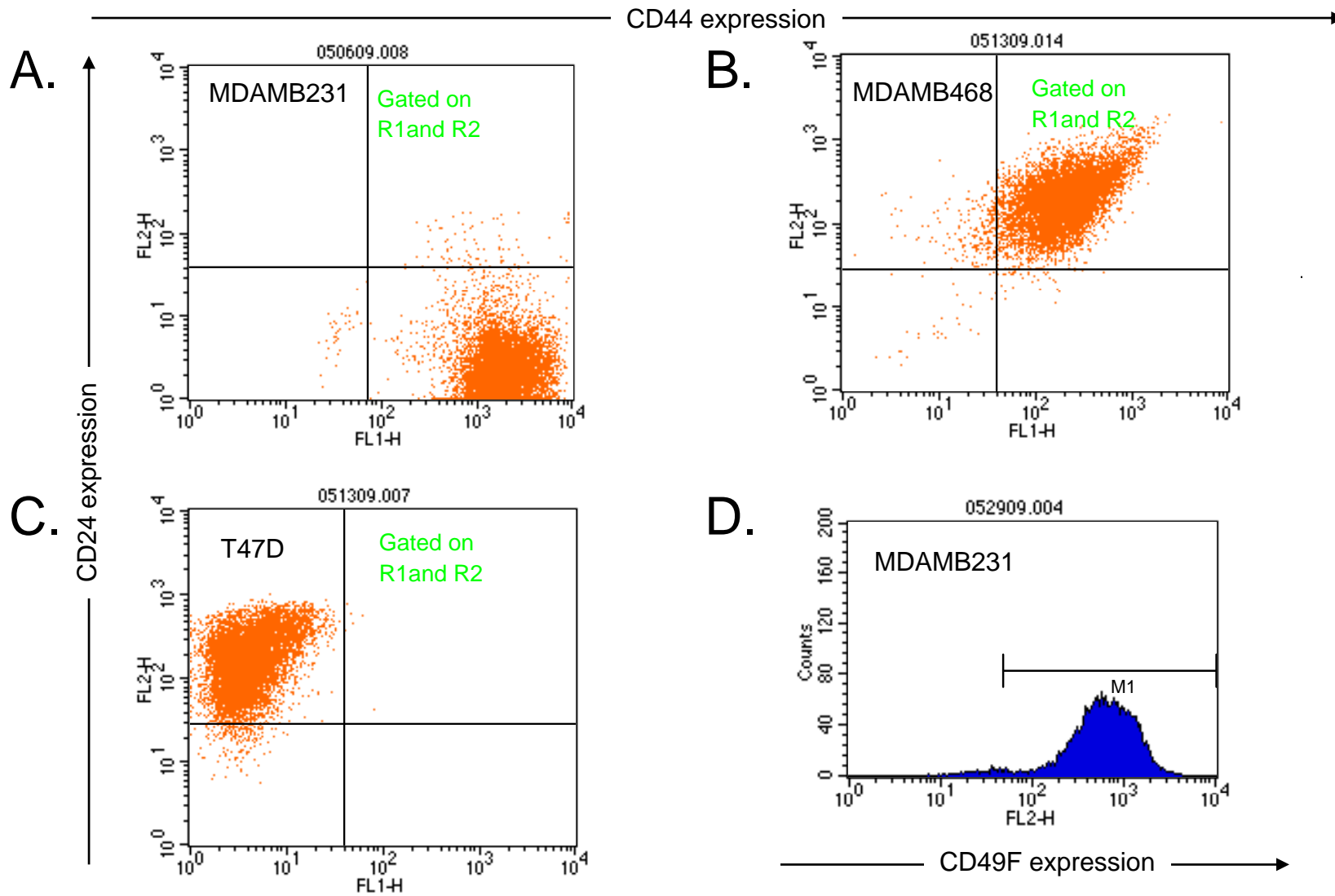


Fig. 2. Flow cytometry analysis on expression of stem cell markers .

Panel A. B. and C. are cells stained with antibodies against stem cell markers CD44 and CD24.

Panel D. MDAMB231 cells were stained with antibodies against stem cell marker CD49F.

Dead cells stained with 7AAD were eliminated from all analyses.

Supplementary Data