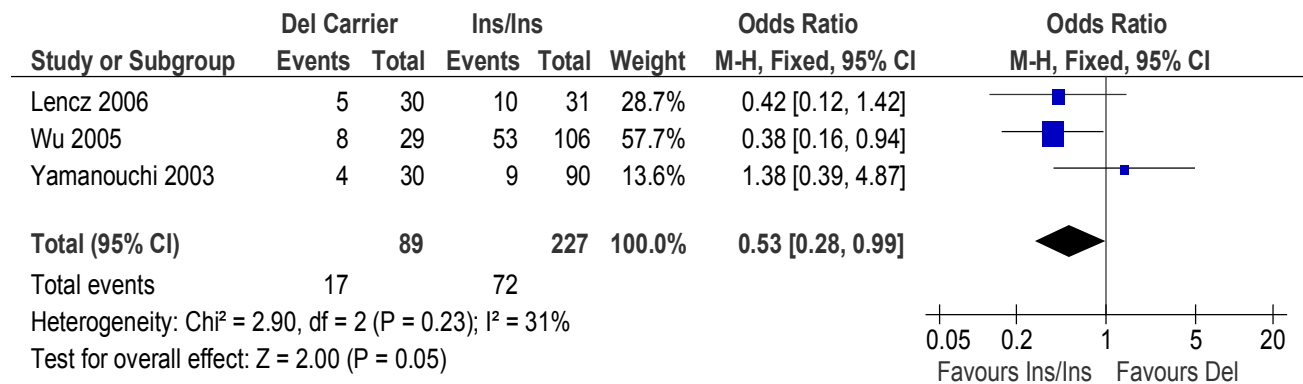


Supplemental Data

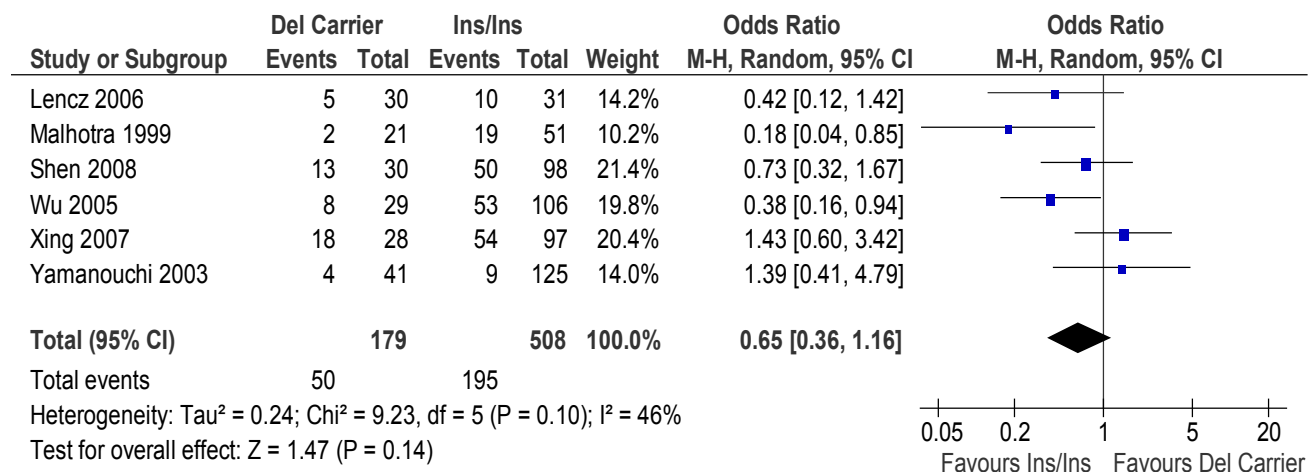
Figure 1. Meta-analysis of the association between -141C Ins/Del polymorphism (Del carrier vs. Ins/Ins) and antipsychotic drug response in studies of first-episode schizophrenia patients.



Note: M-H: Mantel-Haenszel method.

Figure 2. Meta-analysis of the association between -141C Ins/Del polymorphism

(Del carrier vs. Ins/Ins) and antipsychotic drug response: A random effect model.



Note: M-H: Mantel-Haenszel method.