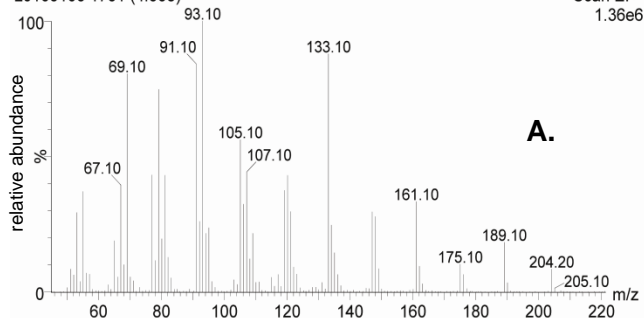
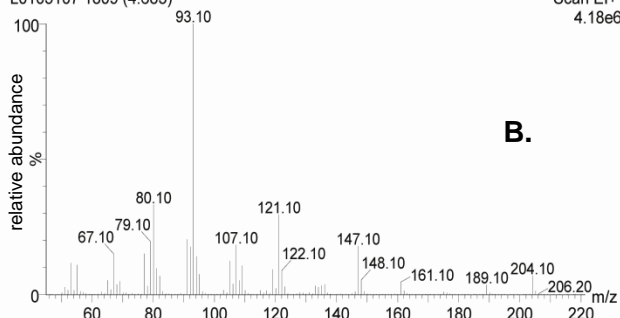


Caryophyllene Standard

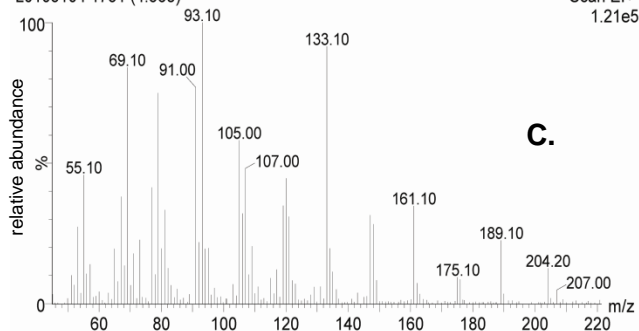
L0105106 1751 (4.568)

**A.** **α -Humulene Standard**

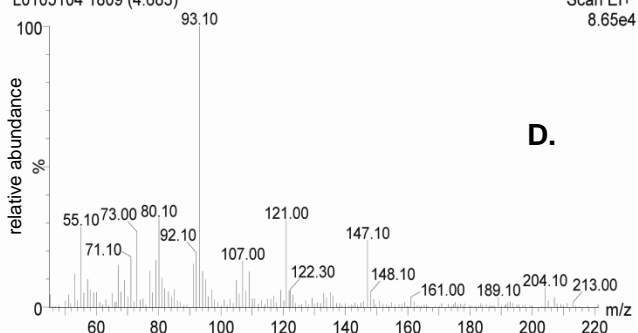
L0105107 1809 (4.683)

**B.****CAHS assay peak 1**

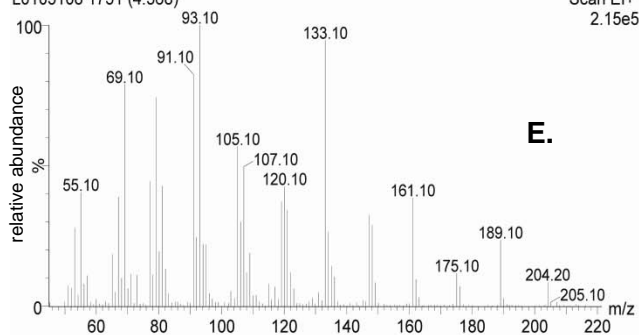
L0105104 1751 (4.568)

**C.****CAHS assay peak 2**

L0105104 1809 (4.683)

**D.****M82 leaf**

L0105108 1751 (4.568)

**E.****M82 leaf**

L0105108 1809 (4.683)

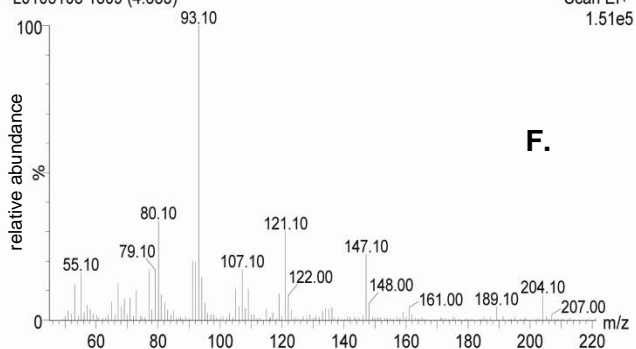
**F.**

Figure S1. Mass spectra of sesquiterpene standards and reaction products. Spectra are shown for authentic β -caryophyllene (A) and α -humulene (B) standards from Sigma, the reaction products from incubation of FPP with purified CAHS (C and D), and peaks 2 (E) and 3 (F) from the M82 leaf sesquiterpene profile (Figure 5A).