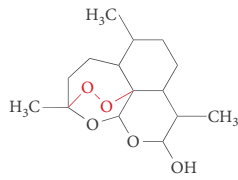
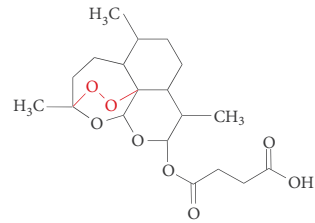


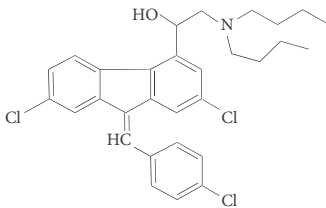
Artemether



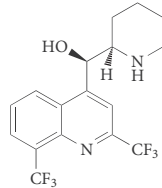
Dihydroartemisinin



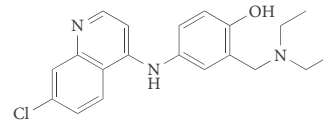
Artesunate



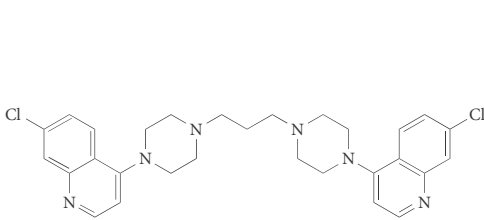
Lumefantrine



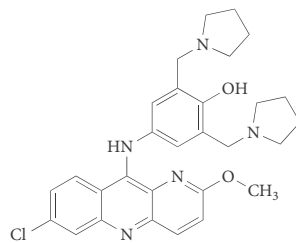
Mefloquine



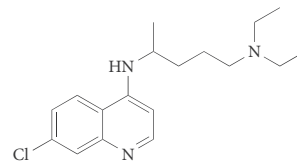
Amodiaquine



Piperaquine



Pyronaridine



Chloroquine

S1 | Structures of artemisinin derivatives and partner drugs that comprise the most commonly used artemisinin-based combination therapies. Chloroquine is not typically used as part of a combination therapy but is included because of its former importance and its chemical similarity to several partner drugs that retain the 4-aminoquinoline ring structure. In the artemisinin derivatives, the endoperoxide bridge is colored in red.