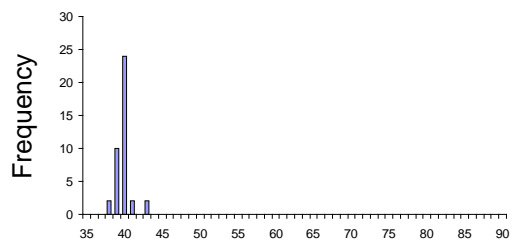
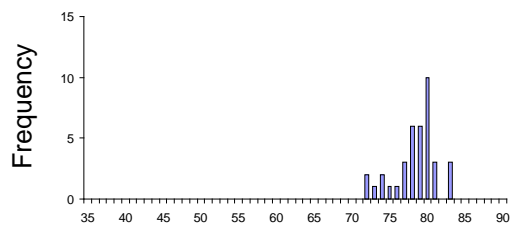


Supplemental Figure S1

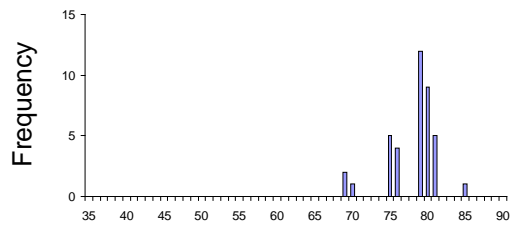
MEF



Nanog OE ESC
X
MEF hybrid

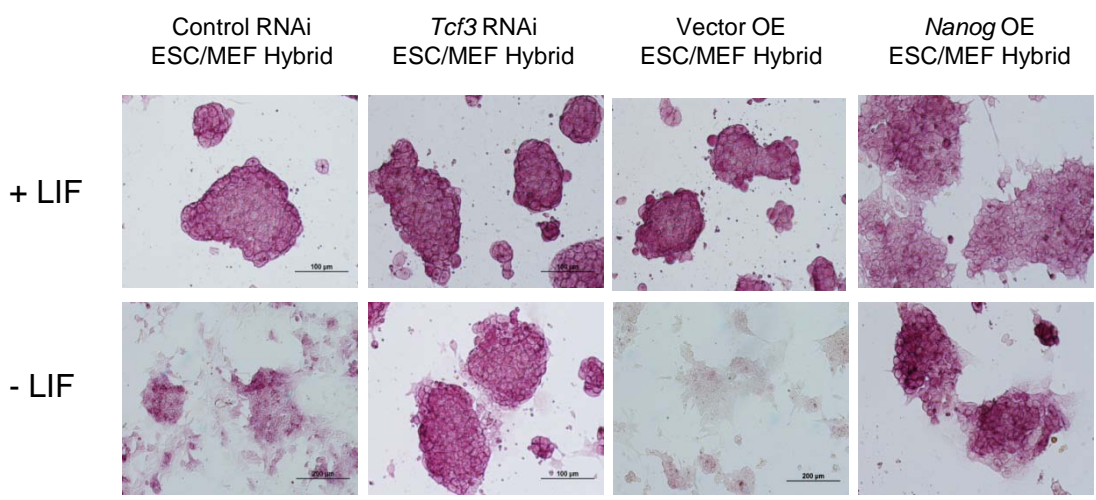


Tcf3 RNAi ESC
X
MEF hybrid

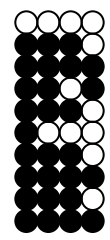
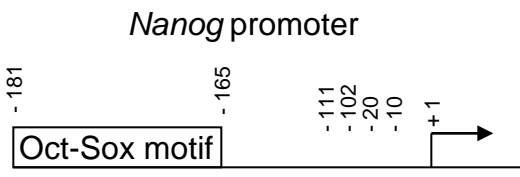


Chromosome number

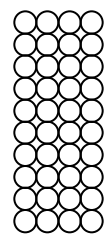
Supplemental Figure S2



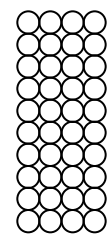
Supplemental Figure S3



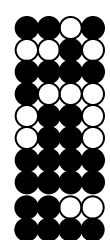
MEF



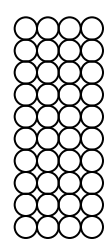
ESC
(*Nanog* OE)



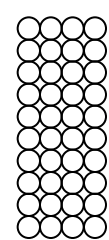
ESC/MEF
Hybrid



MEF

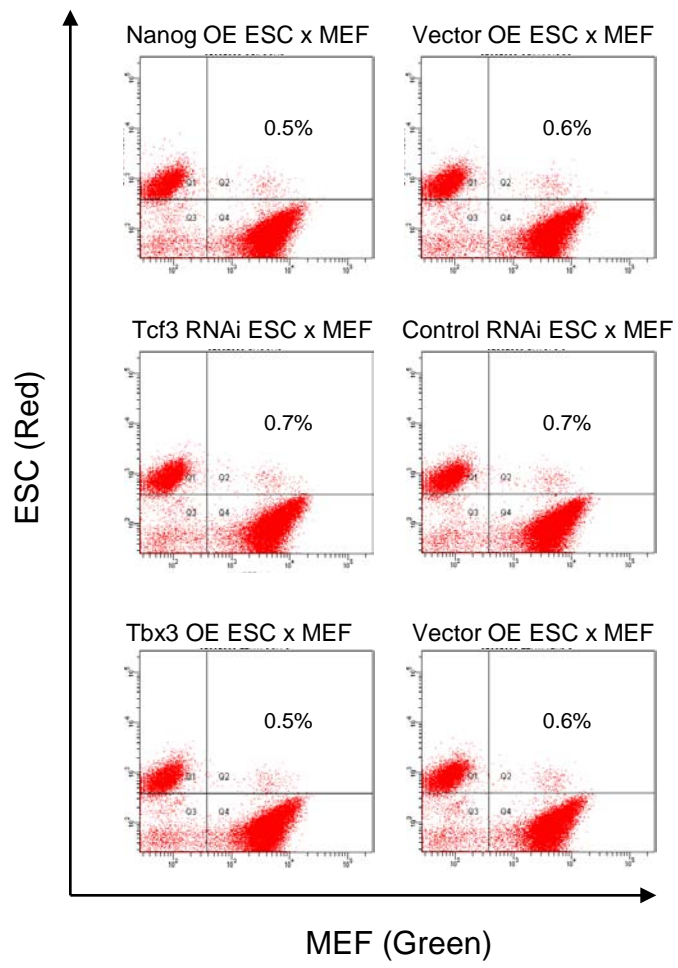


ESC
(*Tcf3* RNAi)

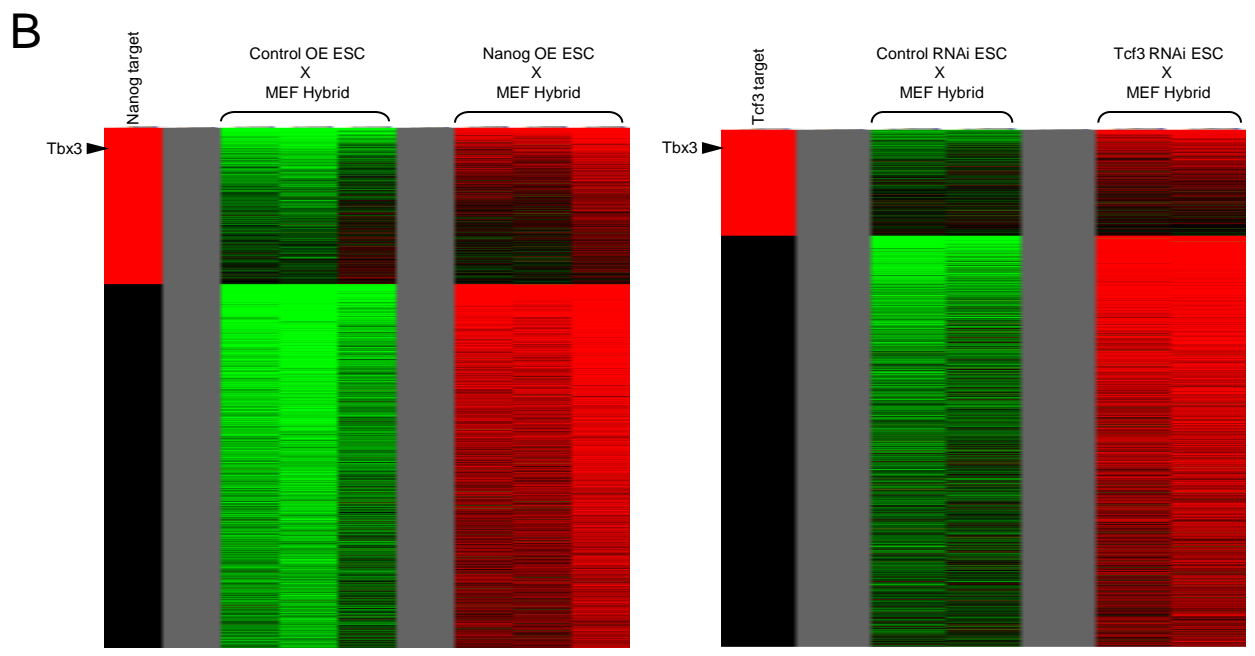
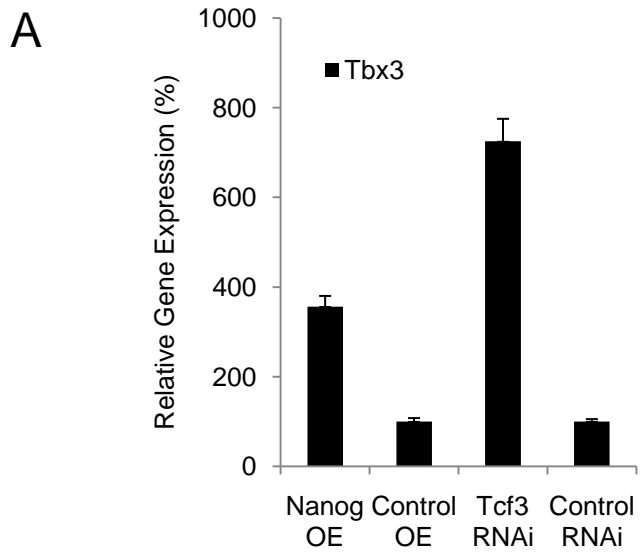


ESC/MEF
Hybrid

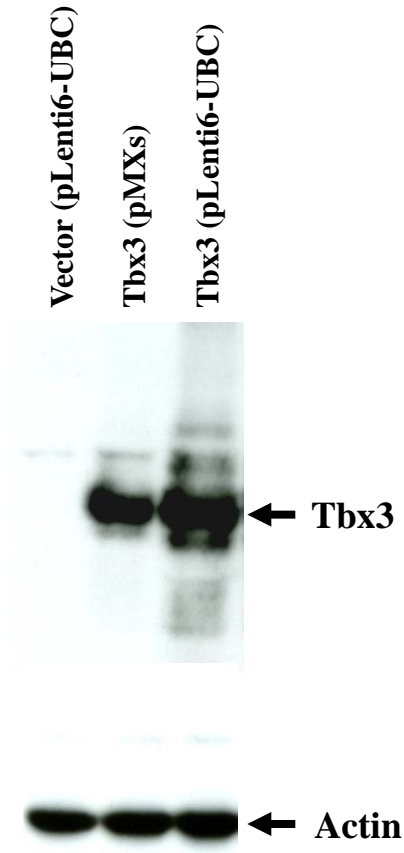
Supplemental Figure S4



Supplemental Figure S5



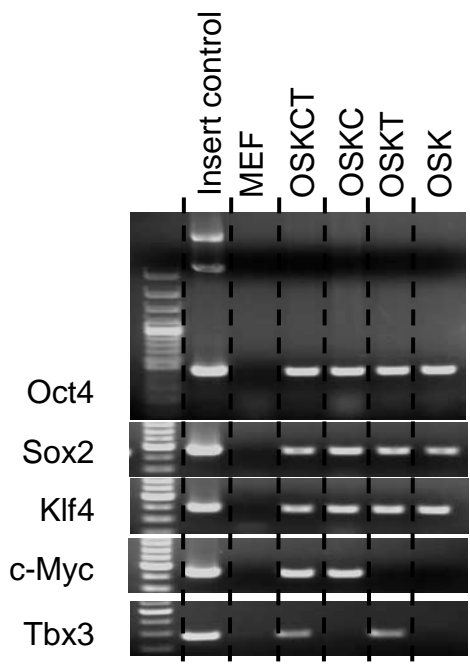
Supplemental Figure S6



Supplemental Figure S7

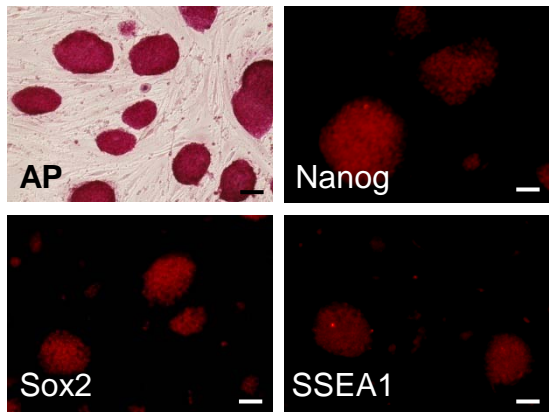
	Isolated GFP+ colony number	Stable GFP+ line	Percentage
OSK + c-Myc+ Tbx3	36	12	33.3%
OSK + cMyc	36	18	50%
OSK	36	33	91.6%
OSK + Tbx3	36	32	88.8%

Supplemental Figure S8



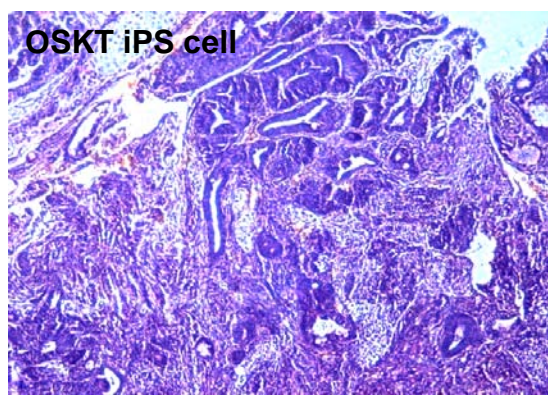
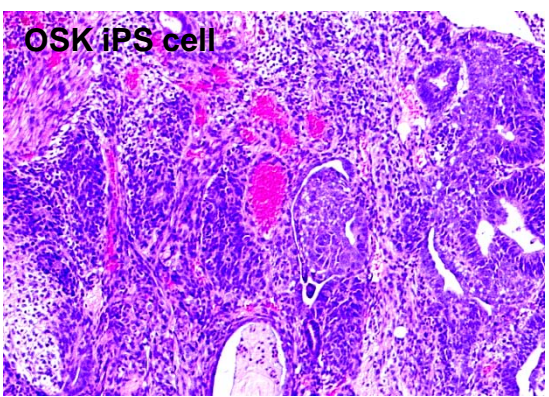
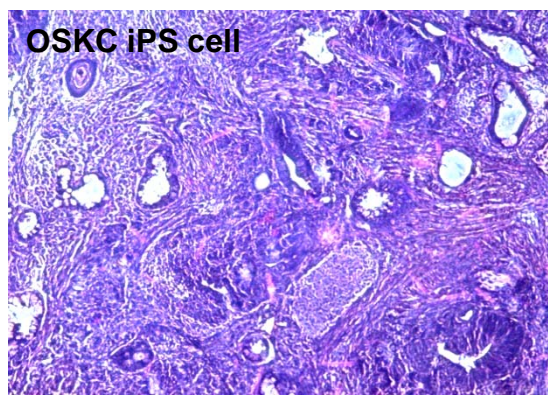
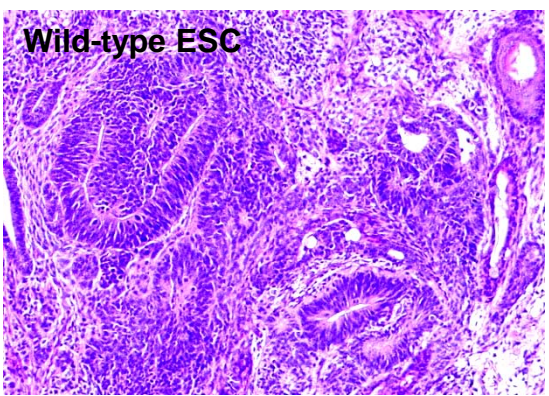
Supplemental Figure S9

OSKT



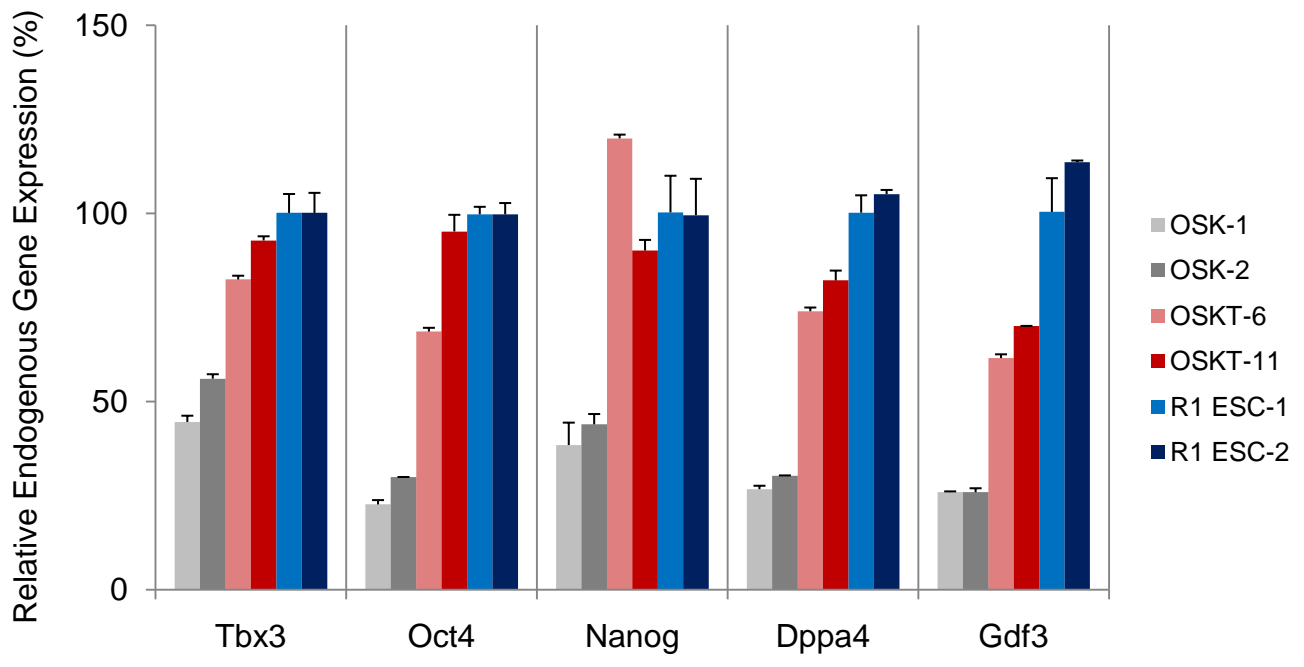
Supplemental Figure S10

Teratoma (H&E stain)

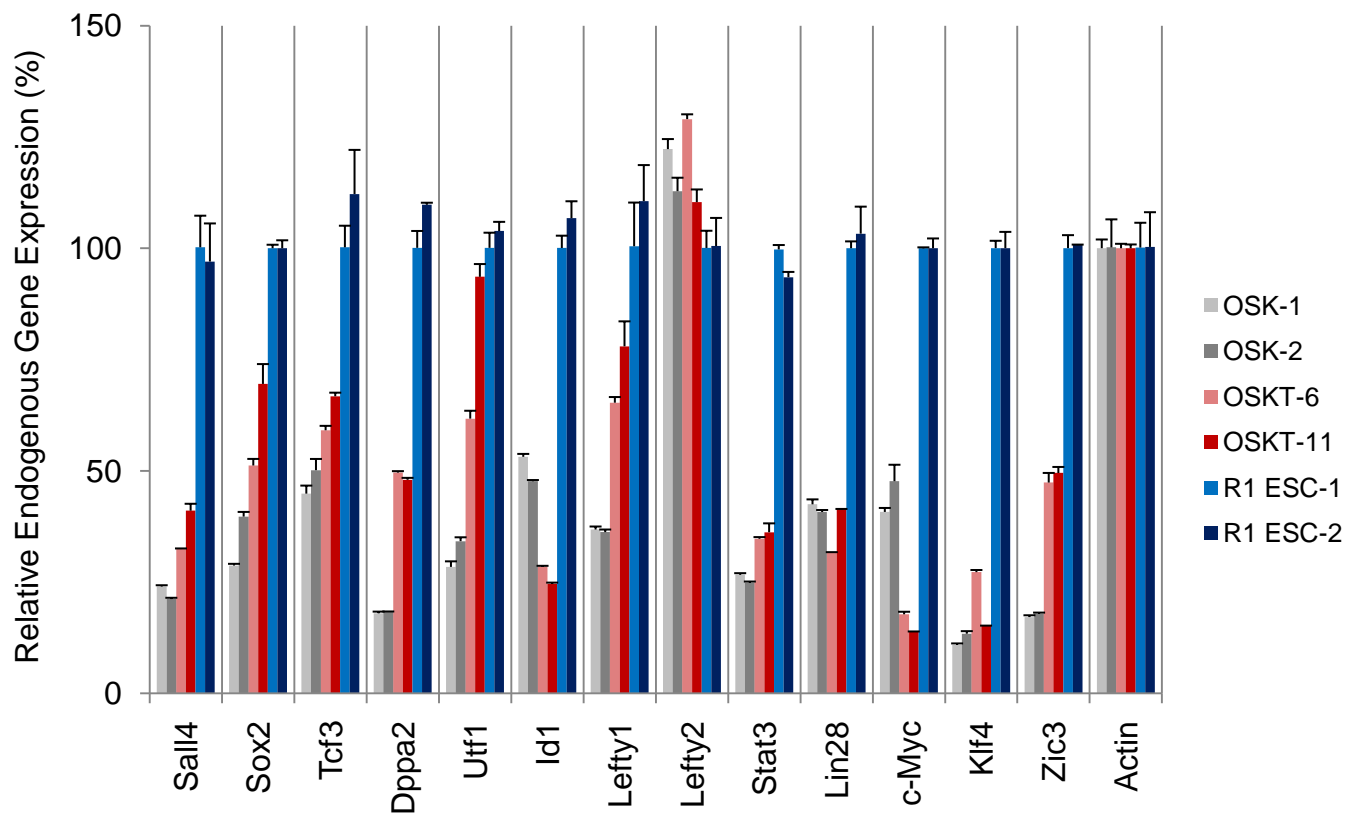


Supplemental Figure S11

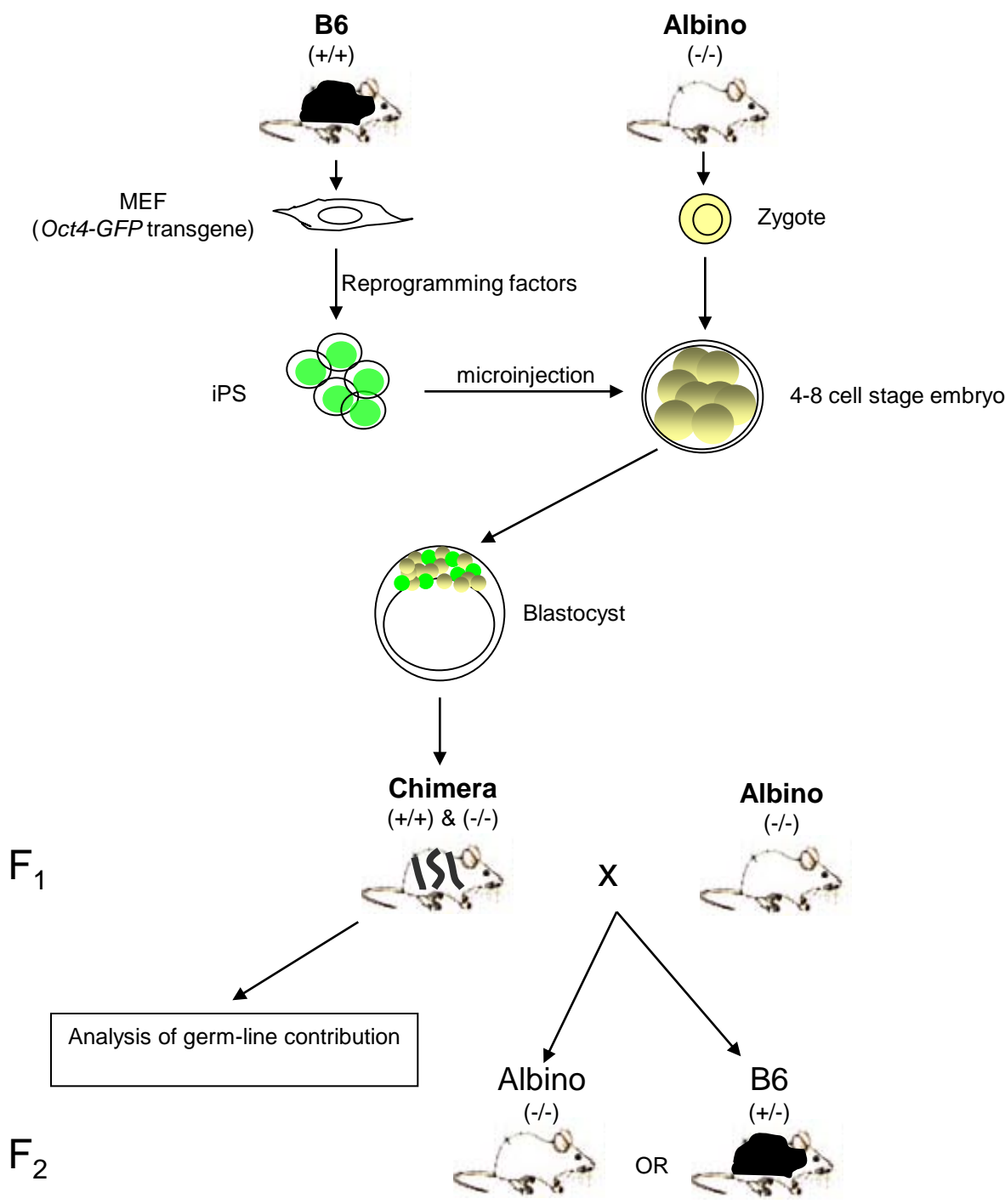
OSKT:OSK Distinguishing ESC Genes (qRT-PCR)



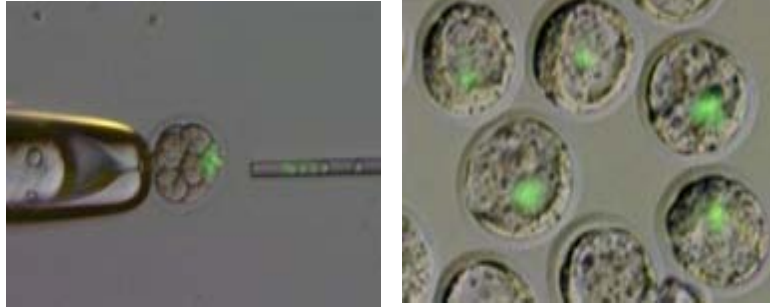
OSKT:OSK Non-distinguishing ESC Genes (qRT-PCR)



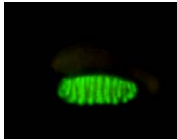
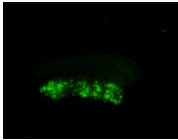
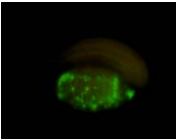
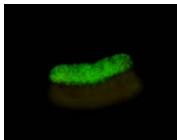
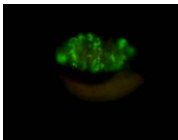
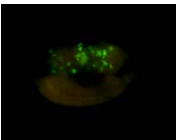
Supplemental Figure S12



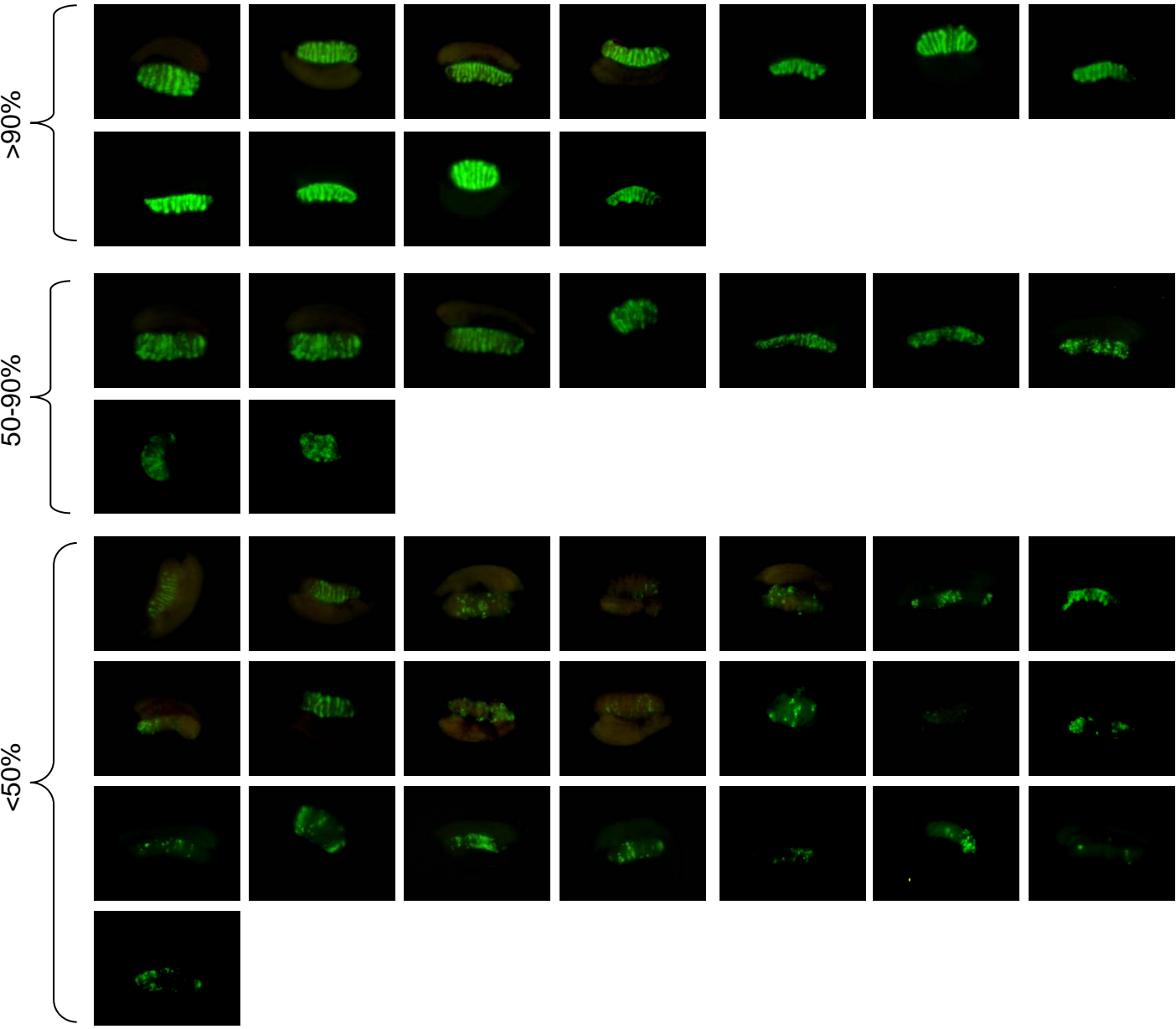
Supplemental Figure S13



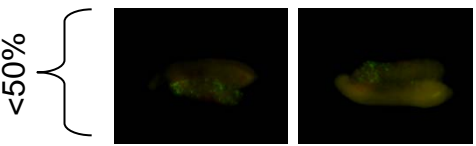
Supplemental Figure S14A

		>90%	50-90%	<50%
Reference	Testis			
	Ovary			

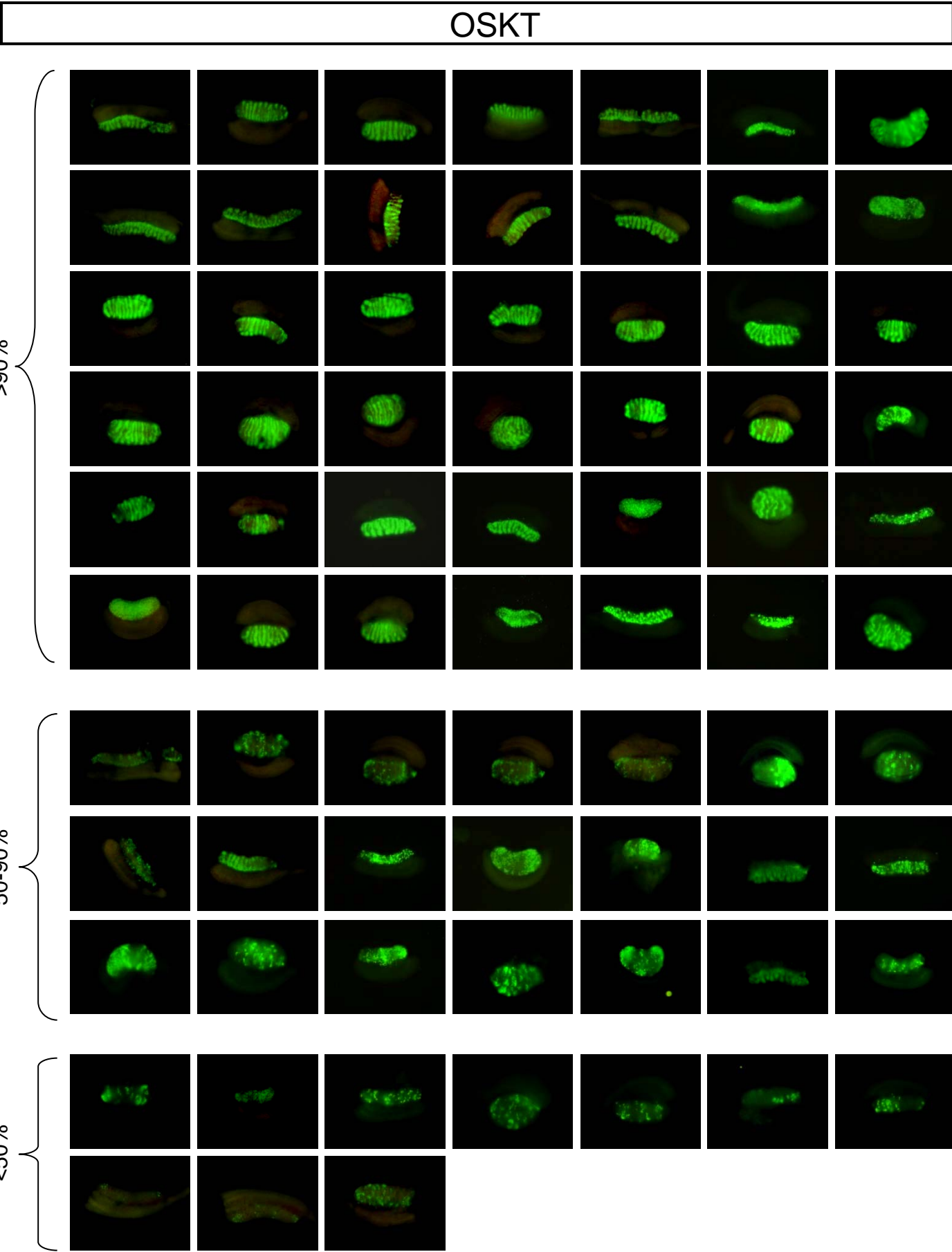
OSK



OSE

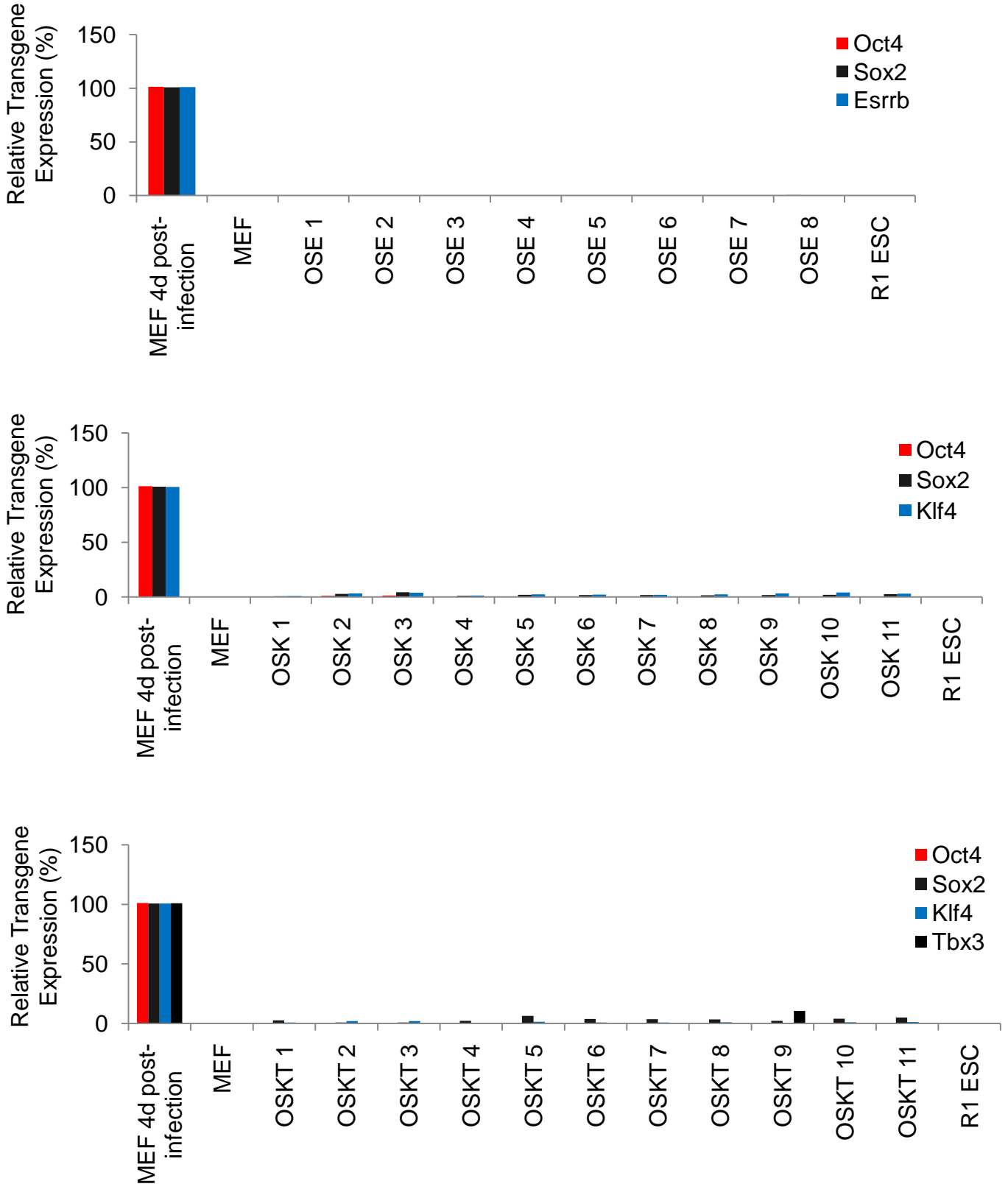


Supplemental Figure S14B



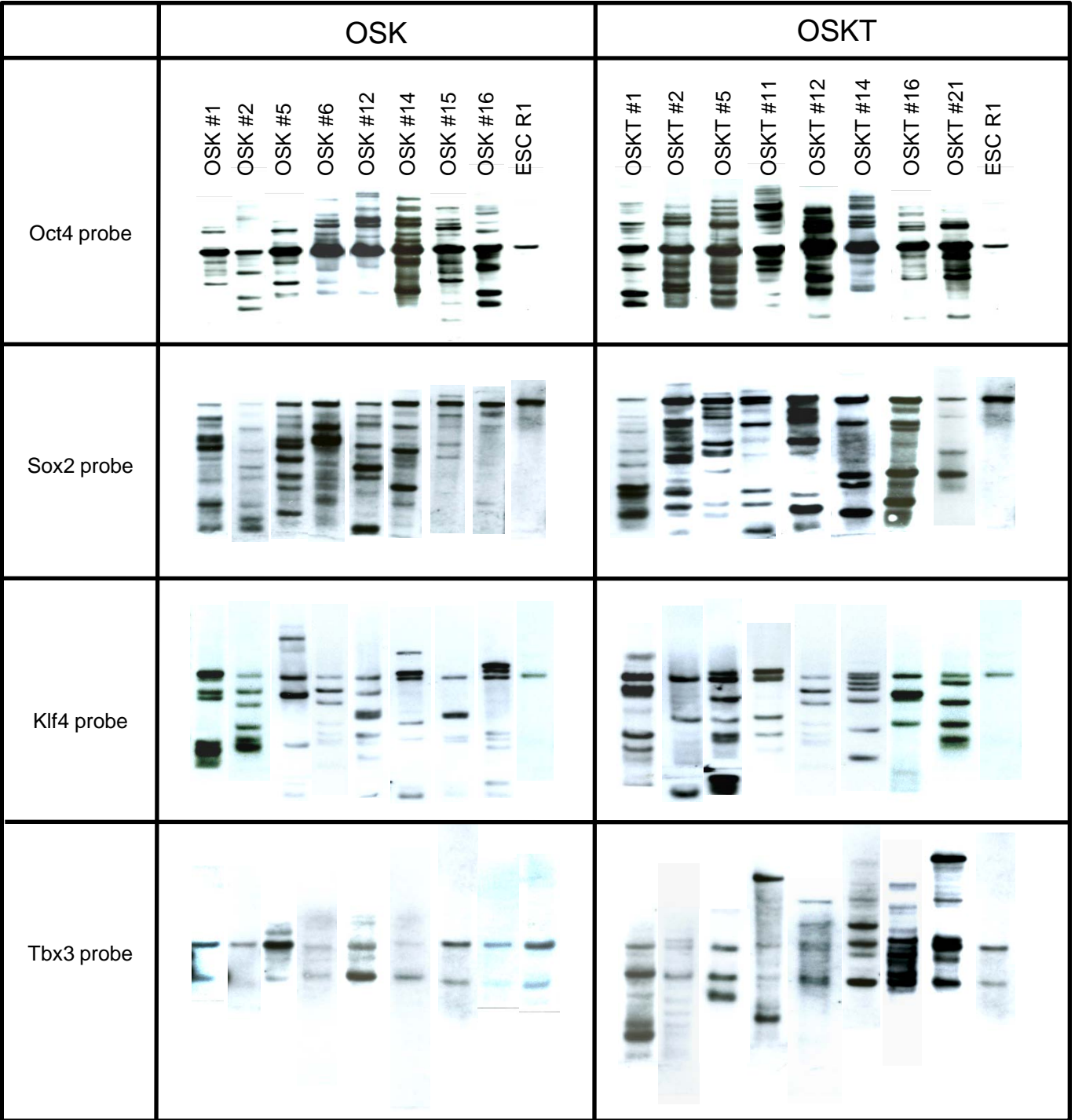
Supplemental Figure S15

Transgene silencing in iPS cell clones

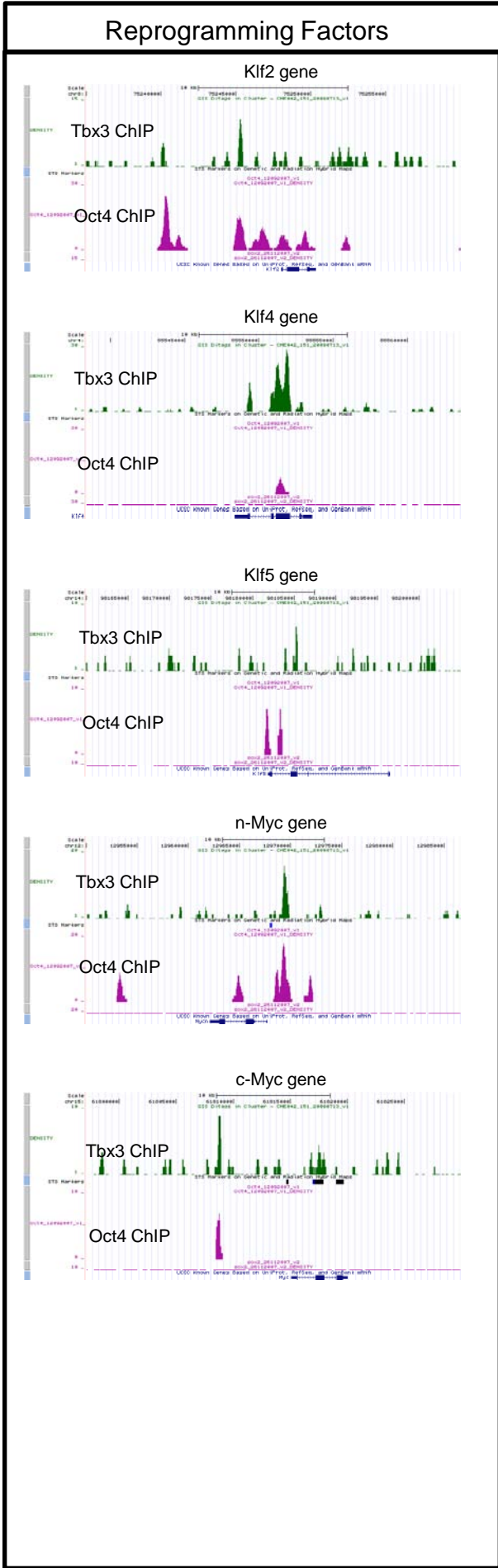
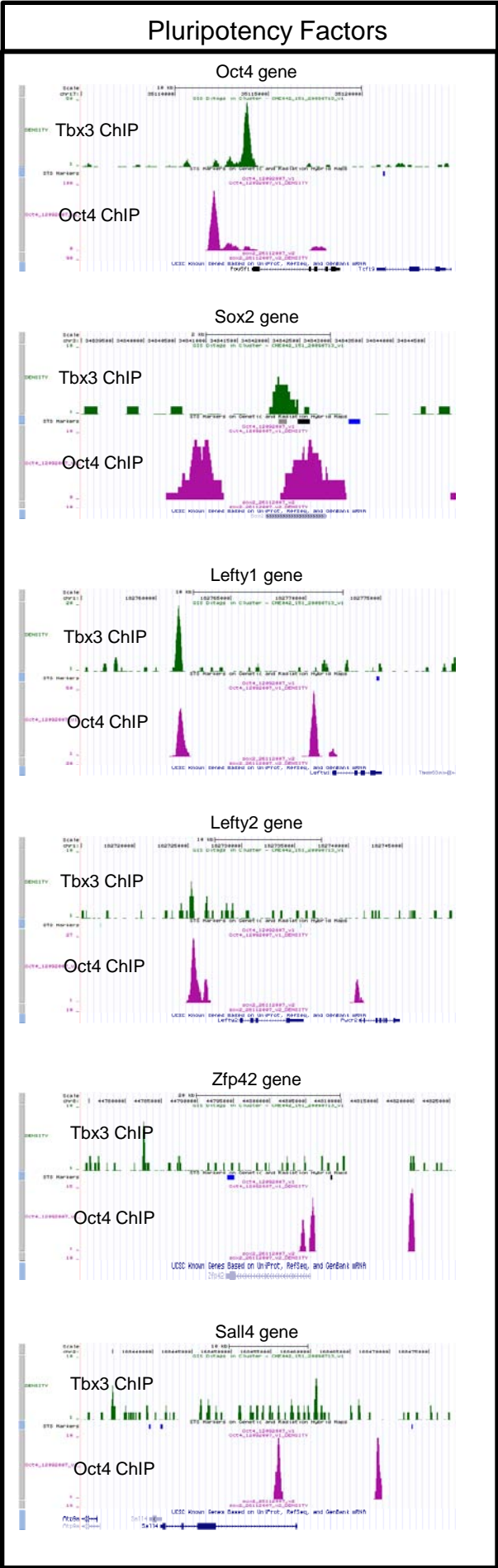


Supplemental Figure S16

Retroviral Integration Frequency in iPS cell clones



Supplemental Figure S18



Supplemental Figure S19

"Pluripotency Landmarks"

