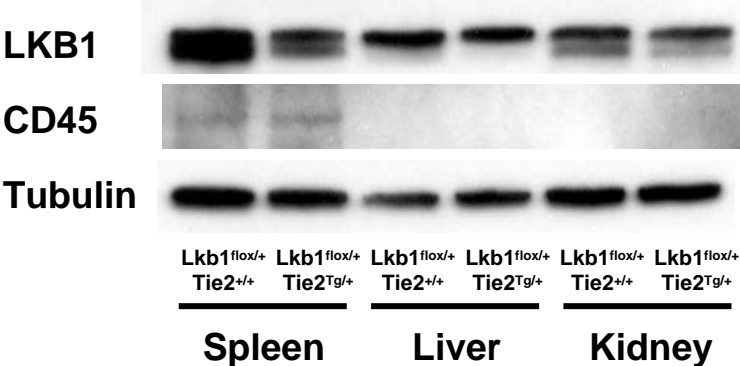
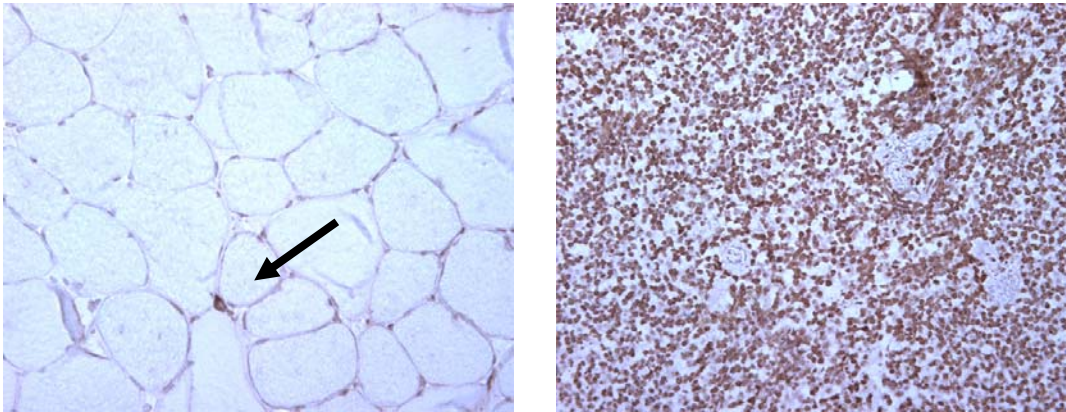


Supplemental Figure

1

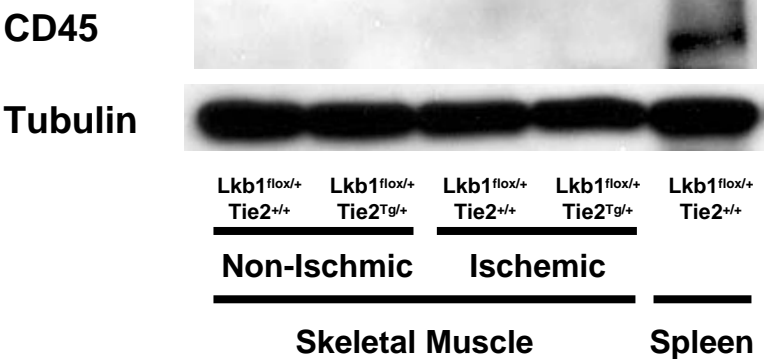


2



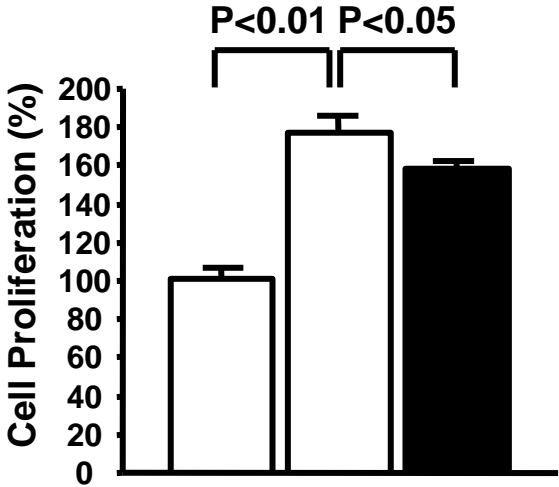
Skeletal Muscle

Spleen



Supplemental Figure

3



| | | | |
|------------|---|---|---|
| Ad-βgal | + | - | - |
| Ad-LKB1 | - | + | + |
| Ad-dn-AMPK | - | - | + |

Supplemental Figure Legend

- (1) Western blot analysis for LKB1, CD45 and α -tubulin (Tubulin) in non-ischemic and ischemic muscles of *Lkb1^{fllox/+};Tie2^{+/+}* and *Lkb1^{fllox/+};Tie2^{Tg/+}* mice on postoperative day 28.
- (2) Representative immunostaining for anti-CD45 antibody (brown) in ischemic skeletal muscle and spleen from *Lkb1^{fllox/+};Tie2^{+/+}* mice on postoperative day 28. Lower panel shows western blot analysis for CD45 and α -tubulin (Tubulin) in non-ischemic and ischemic muscles of *Lkb1^{fllox/+};Tie2^{+/+}* and *Lkb1^{fllox/+};Tie2^{Tg/+}* mice on postoperative day 28.
- (3) MTS-based assay of cell viability. Forty-eight hours after infection with adenoviral constructs encoding β galactosidase (Ad- β gal), LKB1 (Ad-LKB1)(100MOI) and dominant-negative AMPK (Ad-dn-AMPK)(10MOI), HUVECs were incubated under serum deprivation conditions (EBM with 0.5%FBS) for 48 h.