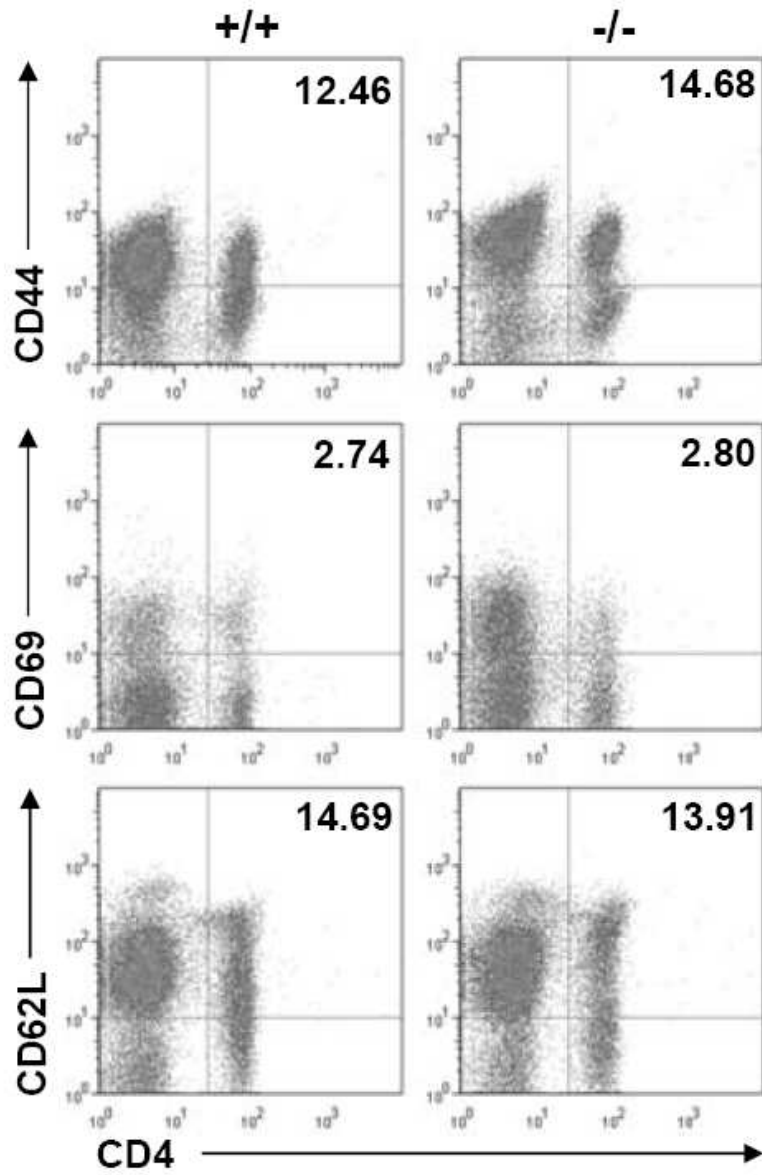


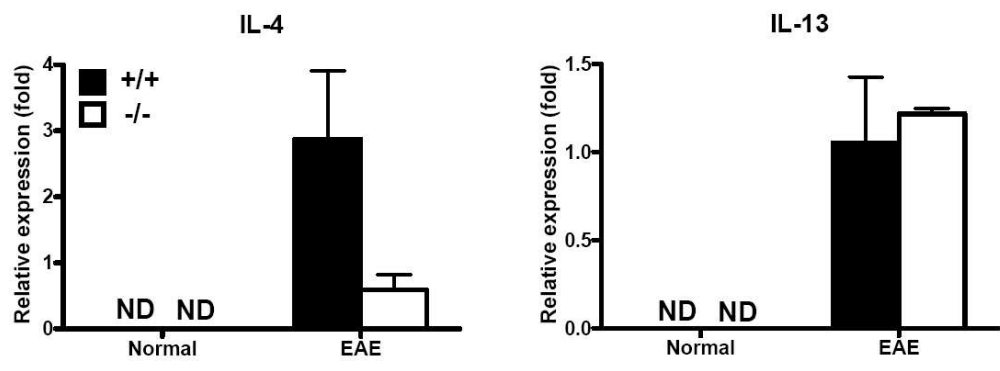
positive cells in the spinal cords of SRC-3<sup>+/+</sup> and SRC-3<sup>-/-</sup> EAE mice were quantified by counting in a field of 0.04 mm<sup>2</sup>. (C) Quantification of mRNA expression of MBP and PLP in spinal cords from SRC-3<sup>+/+</sup> (solid bars) and SRC-3<sup>-/-</sup> (open bars) normal mice and EAE mice 25 days post immunization. The data were analyzed by real-time PCR using  $\beta$ -actin as a reference. The values represent mean  $\pm$  SD in triplicates. \*  $P < 0.05$ .

**Supporting Information Figure 1** Splenocytes were isolated from SRC-3<sup>+/+</sup> (solid bars) and SRC-3<sup>-/-</sup> (open bars) EAE mice 15 days post immunization. Activation status of splenocytes were analyzed by staining CD44, CD69 and CD62L through flow cytometry.

**Supporting Information Figure 2** Quantification of mRNA expression of IL-4 and IL-13 in spinal cords from SRC-3<sup>+/+</sup> (solid bars) and SRC-3<sup>-/-</sup> (open bars) normal mice and EAE mice 25 days post immunization. The data were analyzed by real-time PCR using  $\beta$ -actin as a reference. The values represent mean  $\pm$  SD in triplicates. \*  $P < 0.05$ .



41x61mm (300 x 300 DPI)



92x33mm (300 x 300 DPI)