

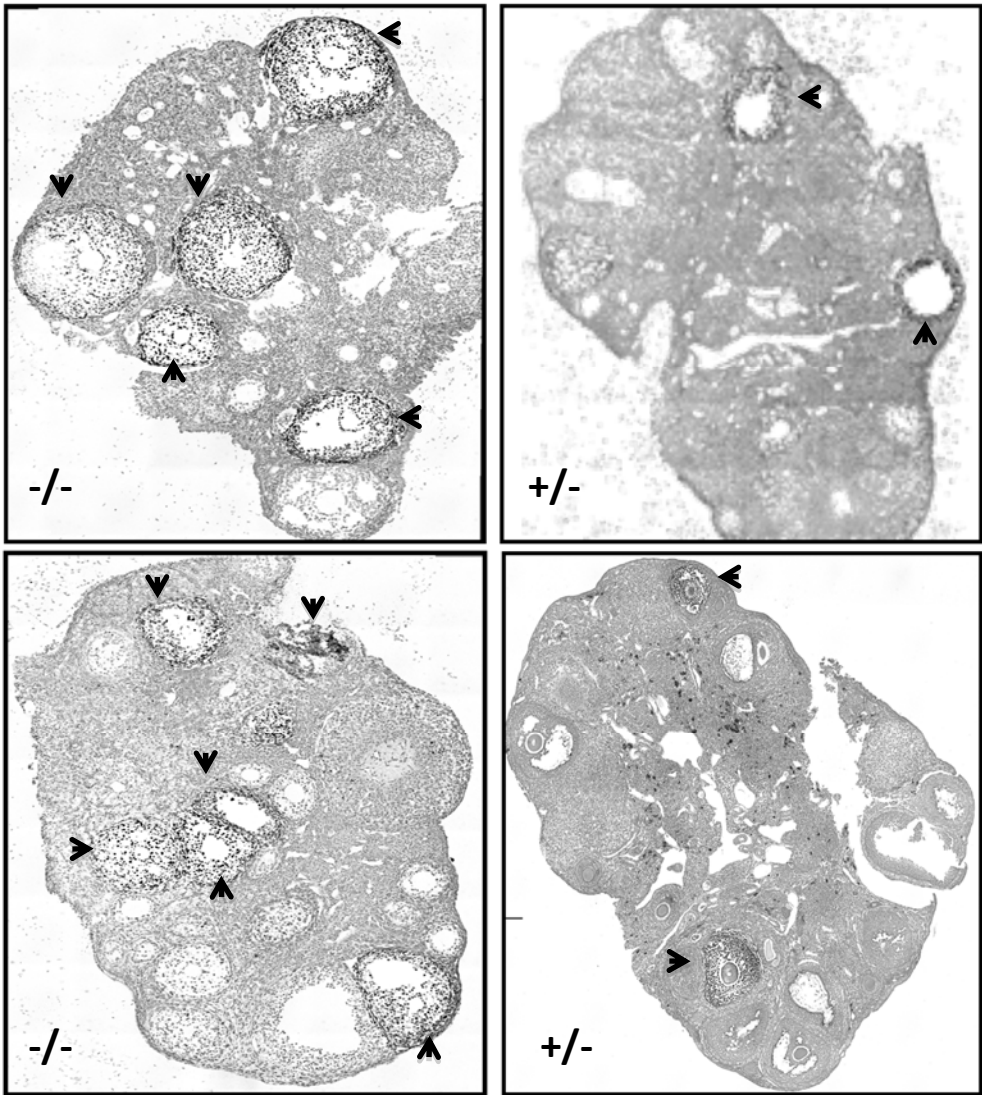
Supplemental data

Supplemental Figure 1. Granulosa cell-specific AR knockout mice have normal reproductive organs. Macroscopic comparison of the female utero-genital tract at estrus between 8-9 week old GC-specific AR knockout (-/-) mice and heterozygous littermates (+/-).

Supplemental Figure 2. Ovaries from GC-specific AR -/- females have higher rate of apoptosis. TUNEL-stained (ApopTag Plus Peroxidase *In Situ* Apoptosis detection kit, from Chemicon International) sections of ovarian tissue from 8-9 week old GC-specific AR -/- and +/- animals (n = 2). Similar results were observed in two separate experiments.



Supplemental Fig. 1



Supplemental Fig. 2