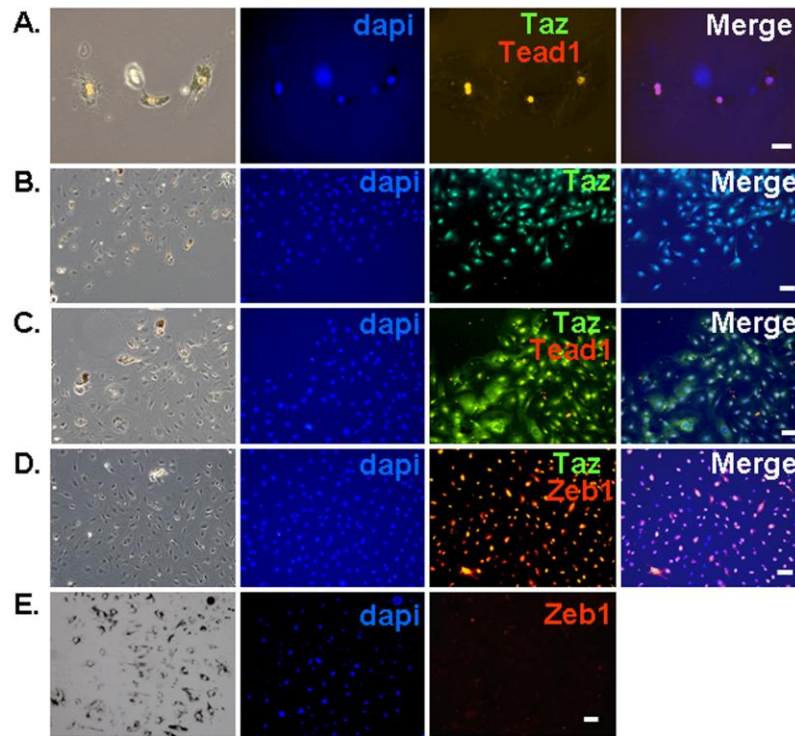


Liu et al. Supplementary Figure S2



Low power view of RPE cells immunostained for Taz, Tead1, and Zeb1 as described in Material and Methods. A. Cells plated at low density express nuclear Taz and Tead1 before loss of pigment and dedifferentiation as in Fig. 2D. B-E. Low power views of dedifferentiating cells expressing nuclear Taz, Tead1 and Zeb1. Bar is 25 microns.